

## CORNER FILE TRACKING

H:\Survey\Corners\Misc\Filetrac.doc

11/23/98

<b>CORNER NUMBER</b>
----------------------

<b>117100400</b>
------------------

<b>STEP</b>	<b>HISTORY()</b>	<b>RESTORATION()</b>
Form Prepared, DB	6/28/05	8/04/05
Field Inspection, DB	8/01/05	8/01/05
Form Checked, DB	8/5/05	8/5/05
Form Edited, DB	8/8/05	8/8/05
Form Signed, DB	8/8/05	8/8/05
Counter Index	8/01/05	8/01/05
GIS Index	8/10/05	8/10/05
Authorize Payment, DB	—	—
Archive Digital Files	9/16/05	9/16/05
Collect Documents	8/01/05	8/01/05
Scanned	9/19/05	9/19/05
Copy For Filming		
Filed, DB		
Finish index (count unit)	8/01/05	8/01/05
Filmed (Archived), DB		

(DB) = Entry needed in database (Access).

### COMMENTS:

DATE 06/28/2005

TOWNSHIP 11 SOUTH, RANGE 7 WEST, WILLAMETTE MERIDIAN; SECTION 18 CORNER SW  
 DONATION LAND CLAIM NONE CORNER N/A

**COMMON CORNER(S):**

N W SECTION 19  
 N E SECTION 24, T11S, R8W  
 S E SECTION 13, " "

**RECORDS (INFORMATION IN BOLD ITALICS IS COUNTY STAFFS' INTERPRETATION OF THE RECORD)**

BASED ON EXTENSIVE RESEARCH AND RECOVERY OF EVIDENCE, THIS OFFICE HAS DETERMINED THAT MOST GENERAL LAND OFFICE SURVEYORS MEASURED TO THE FACE OF BEARING TREES.

- [01] GENERAL LAND OFFICE (GLO) NOTES BY DENNIS HATHORN D.S., DATED APRIL 27 1855. SET POST FOR SECTIONS 18, 19, 13, 24, FROM WHICH A BURNT FIR 24" DIA. BEARS N2°W, 156 LKS (102.96 FEET), A BURNT FIR 30" DIA. BEARS N45°E, 48 LKS (31.68 FEET), A BURNT FIR 30" DIA. BEARS S40°E, 126 LKS (83.16 FEET), A BURNT FIR 40" DIA. BEARS S10°W, 104 LKS (68.64 FEET).
- [02] COUNTY SURVEY NO. 549 (OLD NO. 87), FIELD NOTES (FIELD BOOK NO. 21, PG. 28-34) BY W. C. GALLOWAY C.S., DATED JUNE 2, 1916. SET A STONE 24" X 10" X 6" FROM WHICH A STUMP 30" DIA. (GLO) BEARS N47°30'E, .48 CHS (31.68 FEET), A BURNT FIR 30" DIA. (GLO) BEARS S42°30'E, 1.26 CHS (83.16 FEET) STILL STANDING, A BURNT FIR 40" DIA. (GLO) BEARS S8°30'W, 1.04 CHS (68.64 FEET) STILL STANDING, STUMP 24" DIA. (GLO) N3°30'W, 1.56 CHS (102.96 FEET), MARKED FIR 24" DIA. BEARS S62°10'E, 1.695 CHS (111.87 FEET).
- [03] CORNER RESTORATION BOOK NO. 1 PG 108 BY W. C. GALLOWAY C.S., DATED JUNE 2, 1916. SET A STONE 24" X 10" X 6" FROM WHICH A STUMP 30" DIA. (GLO) BEARS N47°30'E, .48 CHS (31.68 FEET), A BURNT FIR 30" DIA. (GLO) BEARS S42°30'E, 1.26 CHS (83.16 FEET) STILL STANDING, A BURNT FIR 40" DIA. (GLO) BEARS S8°30'W, 1.04 CHS (68.64 FEET) STILL STANDING, STUMP 24" DIA. (GLO) N3°30'W, 1.56 CHS (102.96 FEET), MARKED FIR 24" DIA. BEARS S62°10'E, 1.695 CHS (111.87 FEET).
- [04] CORNER RESTORATION NO. 1064 (SEE ALSO LINCON COUNTY SURVEY NO. 4399), BY COUNTY SURVEYORS OFFICE DATED JUNE 2, 1916. THIS IS TRANSCRIBED FROM RECORD NO. [03] AND MAY CONTAIN ERRORS AND/OR OMISSIONS.
- [05] BENTON COUNTY MAP NO. 11-7-00010 BY W.C. GALLOWAY C.S., NO DATE GIVEN. STONE 24" X 6" X 10", STUMP 30" DIA. BEARS (GLO) N47 1/2°E, .48 CHS (31.68 FEET) CHECKS. BURNT FIR 30" DIA. (GLO) BEARS S42 1/2°E, 1.26 CHS (83.16 FEET), BURNT FIR 40" DIA. BEARS S8°30'W, 1.04 CHS (68.64 FEET), STUMP 24" DIA. BEARS N3 1/2°W, 1.56 CHS (102.96 FEET), FIR 24" DIA. BEARS S62°10'E, 1.695 CHS (111.87 FEET) TO CENTER.
- [06] CORNER RESTORATION NO. 1078, (SEE ALSO LINCON COUNTY SURVEY NO. 669), BY HOWARD E. TAYLOR, P.E., DATED JANUARY 18, 1956. STONE IN PLACE AND REMAINS OF 3 OUT OF 4 ORIGINAL BT'S MATCHING ORIGINAL NOTE- BEARING AND DISTANCE.  
 SCRIBED THE FOLLOWING:  
 32" FIR N15°E, 51.8 FEET  
 12" FIR S18°W, 24.0 FEET  
 9" FIR S86°E, 24.0 FEET  
 6" FIR N33°W, 8.0 FEET
- [07] COUNTY SURVEY NO. 6455 BY FRED L. LEMKE P.L.S., DATED AUGUST 8, 1977. FOUND STONE ON OLD FENCE LINE, SET 3/4" BOLT 0.5 FEET WEST, 45" FIR N19°E, 54.0 FEET, 15" FIR N26°W, 8.1 FEET, 22" FIR S23°W, 24.3 FEET, 15" FIR S82°E, 24.5 FEET.
- [08] COUNTY SURVEY NO. 7669 BY J. EDWARDS HENDRICKS P.L.S., DATED AUGUST 9, 1984. FOUND STONE AND 1/2" I. BOLT ON WEST EDGE, FIR 32" DIA. BEARS N15°E, 51.8 FEET NOW 38" WITH HEALED FACE, 12" DIA. FIR S18°W, 24.0 FEET NOW 18" WITH HEALED FACE, 9" DIA. FIR S86°E, 24.0 FEET NOW 12" WITH HEALED FACE, 6" FIR N33°W, 8.0 FEET NOW 12" WITH HEALED FACE.
- [09] STARKER FOREST SECTION MAP BY JENNIE CORNELL AND RANDY KENYON DATED SEPTEMBER 23, 1988. S.W. CORNER OF SECTION 18, STONE WITH "X" ON IT; 1/2" IRON BOLT ON WEST SIDE. 14" D. FIR N27°30'W, 8.1 FEET WITH DOUBLE BLAZE MARKS; 15" D. FIR SNAG S81°E, 24.3 FEET WITH OLD SCRIBING SCAR. ON PREVIOUS SURVEY NOTES: 18" D. FIR S18°W, 24.0 FEET IS NOW 24" DIA.; 38" D. FIR N15°E, 51.8 FEET IS NOW 42" DIA.

**NOTES:**

THIS IS A MICROSOFT WORD 2000 DOCUMENT NAMED "17100400" CREATED FROM A BOILER PLATE DOCUMENT NAMED "HISTORY", WHICH HAS A STYLESHEET NAMED "CORNER" ATTACHED TO IT.

**FIRM/AGENCY:** BENTON COUNTY SURVEYOR'S OFFICE  
**ADDRESS:** 360 S.W. AVERY AVE. CORVALLIS OR 97333; PH. 766-6821  
**RESEARCH BY:** DAVID M. DEAN, P.L.S.  
**DATA ENTRY BY:** ADAM CASALEGNO, SURVEY TECH.

**SEE CORNER HISTORY FORM FOR RECORDS ETC.**CORNER RESTORATION FIELD BOOK NUMBER 23 PAGE(S) 45DATE 08/01/2005TOWNSHIP 11 SOUTH, RANGE 7 WEST, WILLAMETTE MERIDIAN; SECTION 18 CORNER SWDONATION LAND CLAIM NONE CORNER N/ACONDITION REPORT \_\_\_\_\_; REFERENCED OUT \_\_\_\_\_; RENEWED XX; SURVEYED IN \_\_\_\_\_**LOCATION AND COMMENTS:**

CORNER IS LOCATED IN A NEW CLEARCUT ON A SOUTHEAST FACING SLOPE. TO REACH CORNER FROM THE BENTON AND LINCOLN COUNTY LINE ON HIGHWAY 20, TRAVEL NORHTWESTERLY ON HIGHWAY 20 FOR 200± FEET; THEN RIGHT (NORTH) ON PRIVATE GRAVEL ROAD FOR 0.02 MILES; THEN BEAR LEFT ON STARKER FOREST ROAD (PASSING THROUGH LOCKED GATE) FOR 0.87 MILES TO LOCATION TAG ON ±40" D. FIR ON EAST (RIGHT) SIDE OF ROAD; THEN N48°W, 528 FEET TO CORNER. CORNER IS GOOD FOR PREMARKING AND GPS CONTROL FOR NEXT 3 OR 4 YEARS.

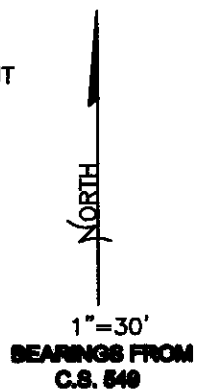
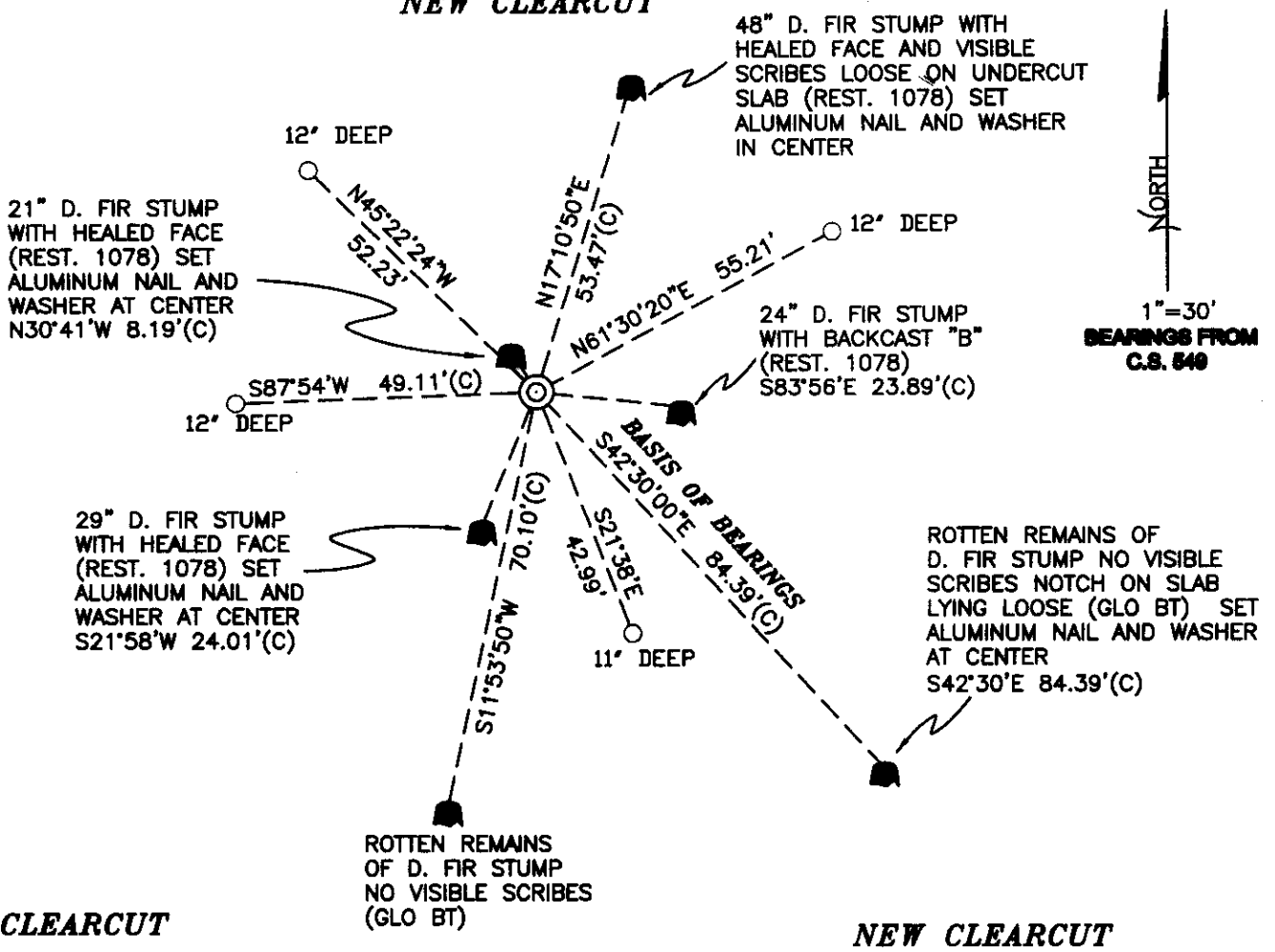
**MONUMENTS AND ACCESSORIES FOUND (CONDITION AND SOURCE):**

1. FOUND 23" X 15" X 5" SANDSTONE, FLUSH WITH GROUND LEVEL WITH "+" ON TOP CENTER FOR CORNER POSITION.  
(SET 24" X 10" X 6" STONE PER RECORDS [02] AND [03]).  
(24" X 6" X 10" STONE PER RECORD [05]).  
(STONE IN PLACE PER RECORD [06]).  
(FOUND STONE ON OLD FENCE LINE AND SET 3/4" BOLT 0.5 FEET WEST PER RECORD [07]).  
(FOUND STONE AND 1/2" BOLT ON WEST EDGE PER RECORD [08]).  
(FOUND STONE WITH "+" AND 1/2" BOLT ON WEST SIDE PER RECORD [09]).
2. FOUND 1/2" X 18" BOLT, TIPPED AND LOOSE ON WESTERLY SIDE OF ABOVE STONE.  
(SET 3/4" BOLT, 0.5 FEET WEST OF STONE PER RECORD [07]).  
(FOUND 1/2" BOLT ON WEST EDGE OF STONE PER RECORD [08]).  
(FOUND 1/2" BOLT ON WEST SIDE OF STONE PER RECORD [09]).
3. FOUND ROTTEN REMAINS OF LARGE D. FIR STUMP WITH NO VISIBLE SCRIBES BUT NOTCH ON SLAB LYING LOOSE, S42°30'E, 84.39 FEET TO CENTER.  
(BURNT 30" FIR, S40°E, 83.16 FEET PER RECORD [01]).  
(BURNT FIR 30", BEARS S42°30'E, 83.16 FEET PER RECORDS [02], [03] AND [05]).
4. FOUND ROTTEN REMAINS OF LARGE D. FIR STUMP WITH NO VISIBLE SCRIBES, S11°54'W, 70.1 FEET TO CENTER.  
(BURNT 40" FIR, S10°W, 68.64 FEET PER RECORD [01]).  
(40" BURNT FIR S8°30'W, 68.64 FEET PER RECORDS [02], [03] AND [05]).
5. FOUND 48" D. FIR STUMP WITH HEALED FACE AND VISIBLE SCRIBES ON LOOSE UNDERCUT SLAB, N17°11'E, 53.47 FEET TO CENTER. SET ALUMINUM NAIL AND PLASTIC WASHER IN TOP CENTER FOR DISTANCE AND ANGLE MEASUREMENT.  
(SCRIBED 32" FIR, N15°E, 51.8 FEET PER RECORD [06]).  
(FOUND 38" FIR WITH HEALED FACE, N15°E, 51.8 FEET PER RECORD [08]).  
(FOUND 42" FIR WITH HEALED FACE, N15°E, 51.8 FEET PER RECORD [09]).
6. FOUND 16" D. FIR STUMP WITH VISIBLE BACKCAST "B", S83°56'E, 23.89 FEET TO CENTER.  
(SCRIBED 9" FIR, S86°E, 24.0 FEET PER RECORD [06]).  
(FOUND 15" FIR, S82°E, 24.5 FEET PER RECORD [07]).  
(FOUND 12" FIR WITH HEALED FACE, S86°E, 24.0 FEET PER RECORD [08]).  
(FOUND 15" FIR SNAG, S81°E, 24.3 FEET WITH OLD SCRIBING SCAR PER RECORD [09]).
7. FOUND 29" D. FIR STUMP WITH HEALED FACE, S21°58'W, 24.01 FEET TO CENTER. SET ALUMINUM NAIL AND PLASTIC WASHER IN TOP CENTER FOR DISTANCE AND ANGLE MEASUREMENT.  
(SCRIBED 12" FIR, S18°W, 24.0 FEET PER RECORD [06]).  
(FOUND 22" FIR, S23°W, 24.3 FEET PER RECORD [07]).  
(FOUND 18" FIR WITH HEALED FACE, S18°W, 24.0 FEET PER RECORD [08]).  
(FOUND 24" FIR, S18°W, 24.0 FEET PER RECORD [09]).
8. FOUND 21" D. FIR STUMP WITH HEALED FACE, N30°41'W, 8.19 FEET TO CENTER. SET ALUMINUM NAIL AND PLASTIC WASHER IN TOP CENTER FOR DISTANCE AND ANGLE MEASUREMENT.  
(SCRIBED 6" FIR, N33°W, 8.0 FEET PER RECORD [06]).  
(FOUND 15" FIR N26°W, 8.1 FEET PER RECORD [07]).  
(FOUND 12" FIR WITH HEALED FACE, N33°W, 8.0 FEET PER RECORD [08]).  
(FOUND 14" D. FIR WITH DOUBLE BLAZE, N27°30'W, 8.1 FEET PER RECORD [09]).

**MONUMENT SET (PROCEDURES AND DESCRIPTION):**

HELD "+" ON TOP OF UNDISTURBED SANDSTONE FOR EXACT CORNER POSITION, WHICH IS IN GOOD AGREEMENT WITH ABOVE NOTED ACCESSORIES. REMOVED STONE AND SET 2" X 3 1/2" GALVANIZED IRON PIPE WITH A 3 1/4" BRASS DISK CONCRETED IN THE TOP, 7" BELOW GROUND LEVEL, MARKED AS SHOWN ON PAGE 2 OF 2. BURIED STONE AND 1/2" BOLT ON SOUTHERLY SIDE OF NEW MONUMENT AND 10" BELOW GROUND LEVEL. SET 6 FOOT ORANGE CARSONITE "SURVEY MARKER" POST 0.5 FEET NORTH OF NEW MONUMENT.

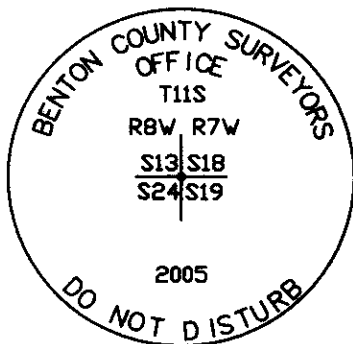
**NEW CLEARCUT**



**NEW CLEARCUT**

**NEW CLEARCUT**

**MONUMENT DETAIL**



**3 1/4" BRASS DISK**

**LEGEND**

- SET 5/8" X 30" REBAR WITH YELLOW PLASTIC CAP MKD "BENTON COUNTY SURVEYOR"
- (C) MEASUREMENT TO CENTER
- ⊙ GOVERNMENT MONUMENT SET AS SHOWN
- ⊙ BEARING TREE AS NOTED
- C.S.B.T. COUNTY SURVEYORS BEARING TREE
- GLO GENERAL LAND OFFICE
- BEARING TREE STUMP AS NOTED

**NEW ACCESSORIES:**

1. SET REBAR (SEE LEGEND) 12" BELOW GROUND LEVEL N61°30'20"E, 55.21 FEET.
2. SET REBAR (SEE LEGEND) 11" BELOW GROUND LEVEL S42°30'00"E, 84.39 FEET.
3. SET REBAR (SEE LEGEND) 12" BELOW GROUND LEVEL S87°54'W, 49.11 FEET.
4. SET REBAR (SEE LEGEND) 12" BELOW GROUND LEVEL N45°22'24"W, 52.23 FEET.

**NOTES:**

COMPASS DECLINATION IS 20° EAST. ALL MEASURED DISTANCES AND BEARINGS ARE TO THE CENTER OF THE OBJECT, UNLESS OTHERWISE NOTED. ALL BEARING TREES ARE PAINTED AND HAVE A B.T. TAG ATTACHED, FACING THE CORNER UNLESS OTHERWISE NOTED. ALL NEW BEARING TREES HAVE A PLASTIC WASHER (STAMPED "BENTON COUNTY SURVEYOR CORNER RESTORATION") ATTACHED (BY ALUMINUM NAIL) TO THE FACE, BELOW THE "BT" FOR DISTANCE AND ANGLE MEASUREMENT UNLESS OTHERWISE NOTED. THE DRAWING IS FROM AUTOCAD RELEASE 2002.

THIS RESTORATION WAS PERFORMED AT THE DIRECTION AND APPROVAL OF THE BENTON COUNTY SURVEYOR, RW

**FIRM/AGENCY:** BENTON COUNTY SURVEYOR'S OFFICE  
**ADDRESS:** 360 S.W. AVERY AVE. CORVALLIS OR 97333; PH. 766-6821  
**PRESENT:** DAVID M. DEAN, P.L.S., BERNIE ALTENBACH, SURVEY TECH. AND BILL KELLEY, SURVEY TECH.  
**EQUIPMENT:** LEICA TCR 1105 WITH TDS ON BOARD

REGISTERED  
PROFESSIONAL  
LAND SURVEYOR

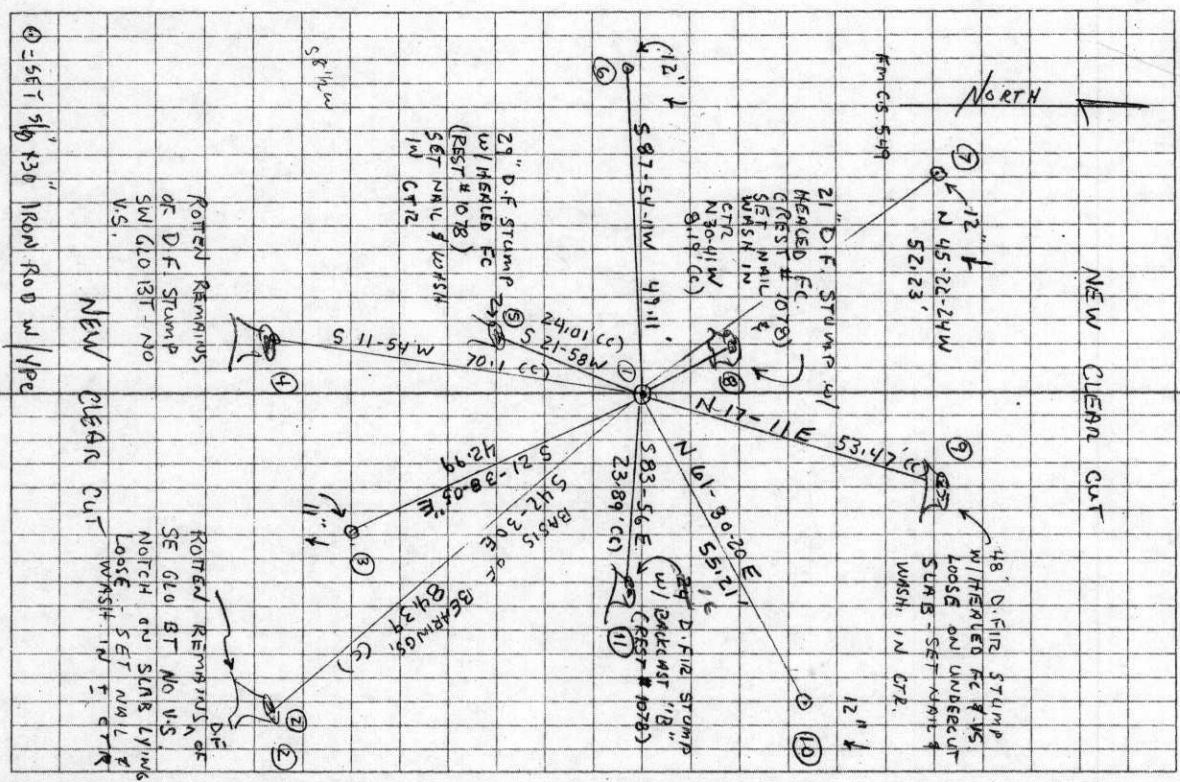
8/8/05 *David M. Dean*

OREGON  
JULY 13, 1984  
DAVID M. DEAN  
2090

RENEWAL DATE: 12/31/05

CLDY, mild  
72°F 29.6" Hg  
LEICA TCR 11051705

8/1/05 23/45  
D. DEAN  
B. ALTENBACH  
B. KELLEY



117100400  
R8W R7W  
13 1/8  
24 1/9

T115

FD 23" X 15" X 5" SANDSTONE w/ "t" on top

FLUSH w/ GROUND LEVEL & FREELY SET

FOR COR POSITION.

FD ROTEN REMAINS OF SET SW GLO BT'S

OSBT (C.S. # 549) GONE - GRUBBED OUT

FD ALL 4 STAMPS OF REST # 1078 (LINCOLN CO.

SURVEY # 669).

FD 1/2" X 1/8" BOLT LOOSE ON WLY SIDE OF STONE

HELD "t" ON STONE FOR EXACT CON. POSITION.

REMOVED STONE & SET 2" X 3 1/2" 6 IP W/ 3 1/4"

BRASS DISK CONC. IN TOP 7" BELOW GROUND

LEVEL MARKED AS SHOWN. BARRIED STONE &

BOLT ON SLY SIDE NEW MON 10" BELOW

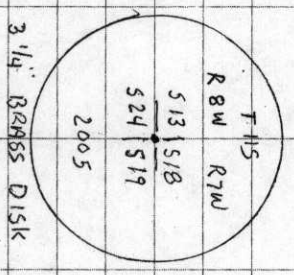
GROUND LEVEL.

SET 6' BRASS CARBONITE "SURVEY MARKER"

POST 05 NORTH OF NEW MON.

N47-35 W

528.52



CS. #190 1/4 sec. cor. bet. secs. 27, 3 and 31. std. parallel T. 14 S. R. 6 W.  
 Set 3/4" pipe 10" under the surface.  
 Oak 20" in dia. bears S. 52° 35' W. 2.522 chs.  
 Witnesses R. L. Jones, M. Fishman. May 26, 1916.

CS. #87  
 Continued  
 Witnesses  
 H. B. Thurman,  
 Edward and  
 John Harmon.  
 1/4 sec. cor. bet. secs. 19, 20 T. 11 S. R. 7 W.  
 Set a plank stand and 5" x 12" <sup>set from old stake</sup> cedar down to maple gone  
 Maple 30" in dia. bears N. 62° 48' E. 7.317 chs.  
 Cedar snag 42" " " N. 87° 15' W. 3.971 "  
 May 30, 1916.

" | Corner to secs. 24, 25, 19, 20 T. 11 S. R. 7 & 8 W.  
 Set a stone 7" x 7" x 20" found indications of other stumps in right position.  
 Fir 26" in dia. bears N. 14° 20' E. 1.463 chs. remkd.  
 Cedar stump 30" " " N. 70° E. .12 " std.  
 Cherry 11" " " S. 58° 30' W. 3.715 "  
 June 2, 1916.

" | 1/4 sec. cor. between secs. 19 & 24 T. 11 S. R. 7 & 8 W.  
 Set two small irons wired together. 2 stumps std. 12-30 S. of creek  
 Fir 30" in dia. bears N. 63° E. 2.515 chs.  
 Maple 36" " " " N. 24° 50' W. 3.086 "  
 May 31, 1916.

" | 1/4 sec. cor. between secs. 18 & 19 T. 11 S. R. 7 W.  
 Set 1/4" x 1 1/2" x 17" iron  
 Fir 30" in dia. bears N. 23° 50' E. 72.5 chs.  
 Alder 16" " " " S. 47° 30' E. 3.87 "  
 Burnt fir 40" " " " N. 80° W. .48 " std. good condition  
 June 2, 1916.

" | Corner to secs. 18, 19, 13 & 24 T. 11 S. R. 7 & 8 W.  
 Set a stone 6" x 10" x 24" Orig. cor.  
 Stump 30" N. 47° 30' E. (N. 45° E. given) .48 chs. std. check  
 Burnt fir 30" S. 42° 30' E. (S. 40° E. given) 1.26 " " "  
 " 40" S. 8° 30' W. (S. 10° W. given) 1.04 " " "  
 " " stump 24" N. 3° 30' W. 1.56 " "  
 Mid. Fir 41" S. 62° 10' E. 1.695 "  
 June 2, 1916.

CS. 245  
 continued  
 1/4 sec. cor. bet. secs. 1 & 2 T. 14 S. R. 5 W.  
 Set an iron. the end of a buggy shaft 10" below the surface.  
 Maple 26" in dia. bears S. 55° 45' E. 3.673 chs.  
 Pine 30" " " " S. 18° 30' E. 5.18 " std.  
 Witness Hugh Taylor June 17, 1916.

CS. 251  
 Witnesses  
 Silas Hart,  
 R. W. Kirk and  
 W. E. Wood.  
 1/4 sec. cor. bet. secs. 7 & 12 T. 12 S. R. 6 & 7 W.  
 Set 1 1/4" pipe  
 Maple 8" in dia. bears S. 78° E. 1.36 chs. std.  
 " 4" " " " N. 77° W. .52 " "  
 Fir 32" " " " " N. 14° W. .097 " "  
 June 26, 1916.

117100400

Corner to sections 18, 19, 13, and 24, Twp. 11 S., Rs. 7 and 8 W.

1064

Reestablishment by W. C. Galloway

June 2, 1916

Set a stone 6" x 10" x 24" original corner

Stump 30" in diam bears N 47° 30' E (N 45°E given)	.48 chains
<b>Burnt Fir</b> 30" in diam bears S 42° 30' E (S 40°E gvn)	1.26 chains
<b>Burnt Fir</b> 40" in diam bears S 8° 30' W (S. 10°Wgvn)	1.04 chains
<b>Burnt Fir</b> Stump 24" bears N 3° 30' W	1.56 chains
<b>Mkd. Fir</b> 24" in diam S. 62° 10' E	1.695 chains

117100400

N. W. corner Section 19, Twp. 11 S., R. 7 W.

By Howard E. Taylor

January 18, 1956

1078

Stone in place and remains of 3 out of the 4 original BT's matching original note bearings and distances.

Scribed the following:

32" Fir N 15 E	51.8 ft.
12" Fir S 18 W	24.0 ft.
9" Fir S 86 E	24.0 ft.
6" Fir N 33 W	8.0 ft.

Ran the mile (chained 5,264.8 ft.) from NW corner 24 to above NW corner 24 with staff compass and set a tie rod in broken glass for approximate N  $\frac{1}{4}$  corner. This rod is about 60 ft. east of old fence corner. No BT's set for  $\frac{1}{4}$  corner as it is not done by transit.





BERT W. UDELL

RT. 3, BOX 8

RES. PH. 1-5752

LEBANON, OREGON

January 18, 1956

C.S. #669  
W

Bud Burdett  
Lincoln County Surveyor  
County Courthouse  
Newport, Oregon

Dear Sir:

We have had occasion to locate the NE corner Section 24, T 11 S,  
R 8 W on the line between Benton and Lincoln counties.

The stone is in place and there are remains of three out of the  
four original BT's matching the original note bearings and distances.

I scribed new BT's as follows:

32" Fir	N 15 E	51.8 ft.
12" Fir	S 18 W	24.0 ft.
9" Fir	S 86 E	24.0 ft.
6" Fir	N 33 W	8.0 ft.

I ran the mile (chained 5,264.8 ft.) from NW corner 24 to above NE  
corner 24 with staff compass and set a tie rod in broken glass for approximate  
N  $\frac{1}{2}$  corner. This rod is about 60 ft. east of old fence corner. No BT's  
set for  $\frac{1}{4}$  corner as it is not done by transit.

Yours very truly,

*Howard E. Taylor*

Howard E. Taylor  
Registered Professional Engineer

HET:BN

T11S  
R8W R7W  
13 | 18  
---  
24 | 19

CS. #190 Std. corner bet. secs. 24, 25 and 26. std. parallel T. 44 S. R. 6 W.  
 Set 3/4" pipe 10" under the surface.  
 Oak 20" in dia. bears S. 52° 35' W. 2.522 chs.  
 Witnesses R. L. Jones, M. Richmond. May 26, 1916.

CS #87  
 Continued  
 Witnesses  
 L. B. Thurman,  
 Edward and  
 John Harmon.  
 1/4 sec. cor. bet. secs. 19 & 20 T. 11 S. R. 7 W.  
 Set a plain standard <sup>set from old stake.</sup> 42" " Cedar dam & Maple gone  
 Maple 30" in dia. bears N. 62° 48' E. 7.317 chs.  
 Cedar snag 42" " " N. 87° 15' W. 3.971 "  
 May 30, 1916.

" | Corner to secs 24, 25, 19 & 20 T. 11 S. R. 7 & 8 W.  
 Set a stone 7" x 7" x 20" found indications of other stumps in right position.  
 Fir 26" in dia. bears N. 14° 20' E. 1.463 chs. rankd.  
 Cedar stump 30" " " N. 70° E. .12 " std.  
 Cherry 11" " " S. 58° 30' W. 3.715 "  
 June 2, 1916.

" | 1/4 sec. cor. between secs. 19 & 24 T. 11 S. R. 7 & 8 W.  
 Set two small irons wired together 2 stumps std. 12.50 s. of creek  
 Fir 30" in dia. bears N. 63° E. 2.515 chs.  
 " 36" " " N. 24° 50' W. 3.086 "  
 May 31, 1916.

" | 1/4 sec. cor. between secs. 18 & 19 T. 11 S. R. 7 W.  
 Set 1/4" x 1/2" x 17" iron  
 Fir 30" in dia. bears N. 23° 50' E. 7.25 chs.  
 Alder 16" " " S. 47° 30' E. 3.87 "  
 Burnt fir 40" " " N. 80° W. 48 " std. good condition.  
 June 2, 1916.

" | Corner to secs 18, 19 & 24 T. 11 S. R. 7 & 8 W.  
 Set a stone 6" x 10" x 24" orig. cor.  
 Stump 30" N. 47° 30' E. (N. 45° E given) 48 chs. std. check  
 Burnt fir 30" S. 42° 30' E. (S. 40° E given) 1.26 " " "  
 " 40" S. 8° 30' W. (S. 10° W. given) 1.04 " " "  
 " " stump 24" N. 3° 30' W. 1.56 " "  
 Mld. Fir 24" S. 62° 10' E. 1.695 "  
 June 2, 1916.

CS. 245  
 continued  
 1/4 sec. cor. bet. secs. 1 & 2 T. 14 S. R. 5 W.  
 Set an iron the end of a buggy shaft 10" below the surface.  
 Maple 26" in dia. bears S. 55° 45' E. 3.673 chs.  
 Pine 30" " " S. 18° 30' E. 5.18 " std.  
 Witness Hugh Taylor June 17, 1916.

CS. 251  
 Witnesses  
 Silas Heart,  
 R. W. Kirk and  
 W. E. Wood.  
 1/4 sec. cor. bet. secs. 7 & 12 T. 12 S. R. 6 & 7 W.  
 Set 1/4" pipe  
 Maple 8" in dia. bears S. 78° E. 1.36 chs. std.  
 " 4" " " N. 77° W. .52 " " "  
 Fir 32" " " N. 14° W. .097 " " "  
 June 26, 1916.

117100400

Corner to sections 18, 19, 13, and 24, Twp. 11 S., Rs. 7 and 8 W.

1263

1064

Reestablishment by W. C. Galloway

June 2, 1916

Set a stone 6" x 10" x 24" original corner

Stump 30" in diam bears N 47° 30' E (N 45°E given)	.48 chains
Burnt Fir 30" in diam bears S 42° 30' E (S 40°E gvn)	1.26 chains
Burnt Fir 40" in diam bears S 8° 30' W (S. 10°Wgvn)	1.04 chains
Burnt Fir Stump 24" bears N 3° 30' W	1.56 chains
Mkd. Fir 24" in diam S. 62° 10' E	1.695 chains

117100400

N. W. corner Section 19, Twp. 11 S., R. 7 W.

1078

By Howard E. Taylor

January 18, 1956

Stone in place and remains of 3 out of the 4 original BT's matching original note bearings and distances.

Scribed the following:

32" Fir N 15 E	51.8 ft.
12" Fir S 18 W	24.0 ft.
9" Fir S 86 E	24.0 ft.
6" Fir N 33 W	8.0 ft.

Ran the mile (chained 5,264.8 ft.) from NW corner 24 to above NW corner 24 with staff compass and set a tie rod in broken glass for approximate N  $\frac{1}{4}$  corner. This rod is about 60 ft. east of old fence corner. No BT's set for  $\frac{1}{4}$  corner as it is not done by transit.