

CORNER FILE TRACKING

H:\Survey\Corners\Misc\Filetrac2.doc
06/15/2003

CORNER NUMBER
117300540

STEP	HISTORY()	RESTORATION()
Form Prepared, DB	12/28/06	12/29/06
Field Inspection, DB	12/28/06	12/28/06
Form Checked, DB	1/5/07	1/5/07
Form Edited, DB	1/8/07	1/8/07
Form Signed, DB	1/8/07	1/8/07
Counter Index	1/8/07	1/8/07
GIS Index	1/8/07	1/8/07
Authorize Payment, DB	_____	_____
Archive Digital Files		
Collect Documents	1/8/07	1/8/07
Scanned	1/9/07	1/9/07
Copy For Filming		
Filed, DB		
Finish index (count unit)	12/28/06	12/28/06
Filmed (Archived), DB		
Document No's to Andrew		

(DB) = Entry needed in database (Access).

COMMENTS:

DATE 12/28/2006TOWNSHIP 11 SOUTH, RANGE 07 WEST, WILLAMETTE MERIDIAN; SECTION 08 CORNER EAST 1/4
DONATION LAND CLAIM NONE CORNER N/A**COMMON CORNER(S).**

WEST 1/4 SECTION 9

RECORDS (INFORMATION IN BOLD ITALICS IS COUNTY STAFFS' INTERPRETATION OF THE RECORD)

BASED ON EXTENSIVE RESEARCH AND RECOVERY OF EVIDENCE, THIS OFFICE HAS DETERMINED THAT MOST GENERAL LAND OFFICE SURVEYORS MEASURED TO THE FACE OF BEARING TREES

- [01] GENERAL LAND OFFICE SURVEY (GLO) BY DENNIS HATHORN, D S , DATED MAY 22, 1855 *SET 1/4 SEC. POST FROM WHICH A FIR 12 IN DIA. BEARS N86°E, 20 LKS (13.20 FEET). A FIR 15 IN DIA. BEARS S85°W, 80 LKS (52.80 FEET).*
- [02] COUNTY SURVEY NO 441 (OLD NO 207) FIELD NOTES (FIELD BOOK 17, PAGE 15) BY BURT WILKES, D C S , DATED APRIL 17, 1914 *FOUND BOTH BT'S DEAD, S.E. STUMP, NE ±30 FEET HIGH. SET 3/4" X 20" IRON BOLT WITH 7" X 4" PINION SLIPPED DOWN OVER IT. MARKED 22" FIR, S35 3/4°W, .865 CHS (57.09 FEET). SET COR. IN ORIGINAL HOLE FOUND BY DIGGING.*
- [03] BENTON COUNTY CORNER RESTORATION BOOK NO 1, PAGE 78, BY BURT WILKES, D C S , NO DATE GIVEN *SET 7" X 4" PINION DOWN OVER 3/4" X 20" BOLT. BOTH TREES DEAD. FIR 12" N80°E, .20 CHS (13.20 FEET); STUMP 15" S85°W, .80 CHS (52.80 FEET): MARKED 22" FIR, S35 3/4°W, .865 CHS (57.09 FEET).*
- [04] BENTON COUNTY CORNER RESTORATION NO 1014 *THIS IS A TRANSCRIBED COPY OF RECORD [03] AND MAY CONTAIN ERRORS AND/OR OMISSIONS.*
- [05] COUNTY SURVEY NO 441 (OLD NO 207) BY BURT WILKES, D C S , DATED APRIL 17 – 27, 1914 *3/4" X 20" BOLT AND 7" X 4" PINION. 22" FIR S35 3/4°W, .865 CHS (57.09 FEET).*
- [06] BENTON COUNTY MAP NO 11-7-00004 BY BURT WILKES, D C.S , DATED APRIL 17 – 27, 1914 *SAME INFORMATION AS RECORD [05] PLUS ADDITIONAL DATA ADDED AT A LATTER DATE, I.E. 9" FIR N60°E, .434 CHS (28.64 FEET), 8" FIR, S17°W, .330 CHS (21.78 FEET).*
- [07] COUNTY SURVEY NO 497 (OLD NO 199) FIELD NOTES (FIELD BOOK 18, PAGE 57) BY W C GALLOWAY, C S , DATED FEBRUARY 15, 1915 *CORNER TIED BUT NOT DESCRIBED.*
- [08] BENTON COUNTY MAP NO 11-7-00001 BY W C GALLOWAY, C S , DATED APRIL 1913 AND FEBRUARY 1915 *3/4" X 20" BOLT. 22" FIR S35°45'W, .865 CHS (57.09 FEET).*
- [09] COUNTY SURVEY NO 1302 (OLD NO 207) FIELD NOTES (FIELD BOOK 82, PAGE 17) BY W C GALLOWAY, C S , DATED DECEMBER 1, 1936 *3/4" BOLT IN PLACE, MARKED 9" FIR, N60°E, .434 CHS (28.64 FEET), 8" FIR, S17°W, .330 CHS (21.78 FEET).*
- [10] BENTON COUNTY CORNER RESTORATION BOOK NO 1, PAGE 78, BY W C GALLOWAY, C S , DATED DECEMBER 1, 1936 *CORNER IN PLACE, MARKED 9" FIR, N60°E, .434 CHS (28.64 FEET), 8" FIR, S17°W, .330 FEET (21.78 FEET)*
- [11] BENTON COUNTY CORNER RESTORATION NO 1014 *THIS IS A TRANSCRIBED COPY OF RECORD [10] AND MAY CONTAIN ERRORS AND/OR OMISSIONS.*
- [12] COUNTY SURVEY NO 1665 (OLD NO 207) FIELD NOTES (FIELD BOOK 82, PAGE 55) BY W C GALLOWAY, C S , DATED APRIL 10, 1944 *BEGINNING AT 3/4" BOLT.*
- [13] COUNTY SURVEY NO 1708 (OLD NO 207) FIELD NOTES (FIELD BOOK 82, PAGE 71) BY CURTIS HANSON, D C S , DATED FEBRUARY 20, 1945 *CORNER TIED BUT NOT DESCRIBED.*
- [14] COUNTY SURVEY NO 1708 (MAP) BY CURTIS HANSON, D C S , NO DATE GIVEN *3/4" X 20" BOLT. 29" FIR, S35°45'W, .865 CHS. (57.09 FEET).*

NOTES.

THIS IS A MICROSOFT WORD 2000 DOCUMENT NAMED "00000000" CREATED FROM A BOILER PLATE DOCUMENT NAMED "HISTORY", WHICH HAS A STYLESHEET NAMED "CORNER" ATTACHED TO IT

FIRM/AGENCY: BENTON COUNTY SURVEYOR'S OFFICE
ADDRESS: 360 S W AVERY AVE CORVALLIS OR 97333, PH 766-6821
RESEARCH BY: DAVID M DEAN, P L S
DATA ENTRY BY: SAME

BENTON COUNTY CORNER RESTORATION FORM, PAGE 1 OF 2, 117300540R3

SEE CORNER HISTORY FORM FOR RECORDS ETC.

CORNER RESTORATION FIELD BOOK NUMBER 25 PAGE(S) 2 & 3 DATE 12/28/2006
TOWNSHIP 11 SOUTH, RANGE 7 WEST, WILLAMETTE MERIDIAN; SECTION 8 CORNER EAST 1/4
DONATION LAND CLAIM NONE CORNER N/A
CONDITION REPORT ; REFERENCED OUT , RENEWED XX; SURVEYED IN

LOCATION AND COMMENTS:

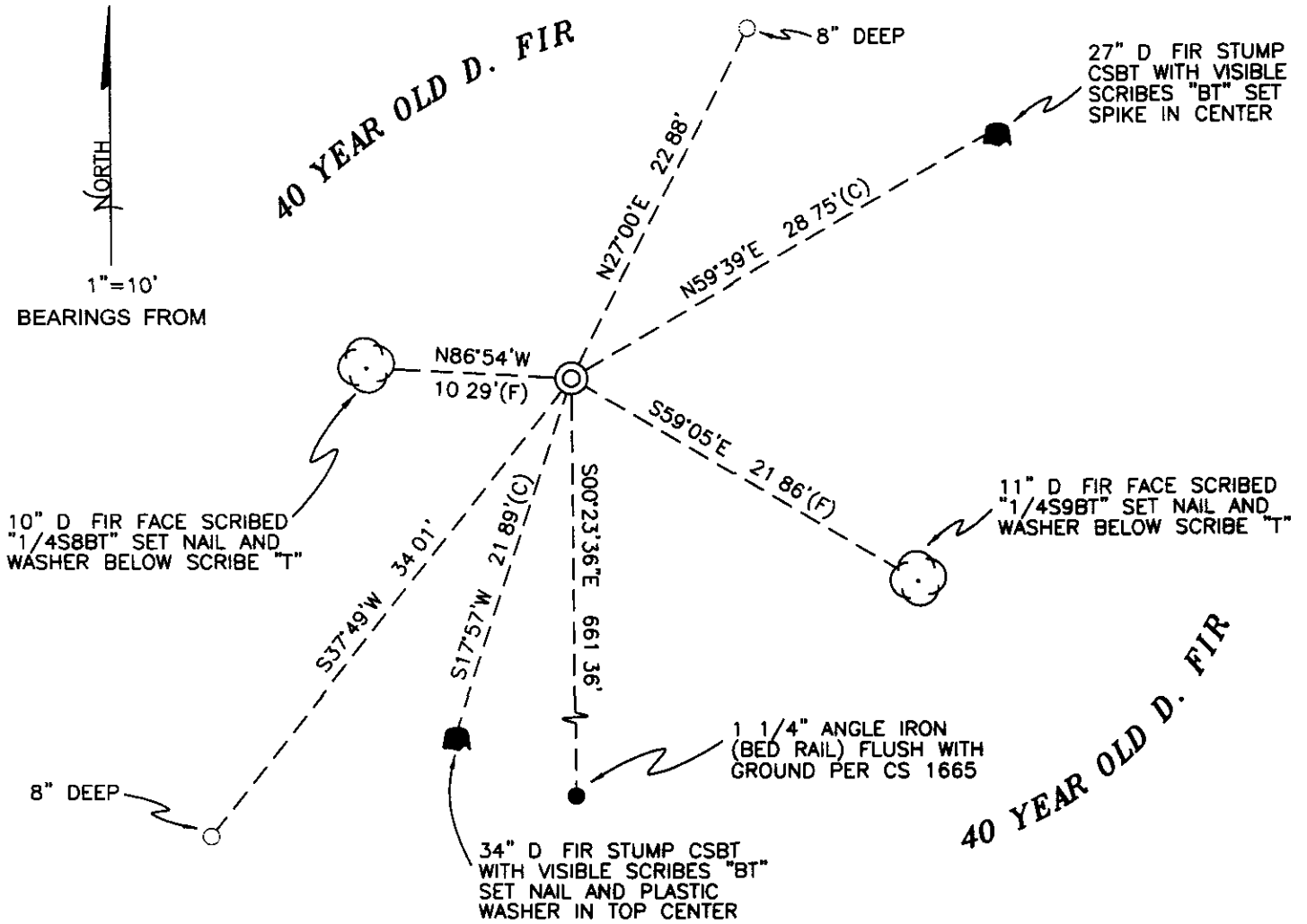
CORNER IS LOCATED ON A GENTLE SOUTHERLY FACING SLOPE IN STAND OF ±40 YEAR OLD D FIR TIMBER TO REACH CORNER FROM THE JUNCTION OF DEVITT ROAD AND SUMMIT HIGHWAY, TRAVEL NORTHERLY ON SUMMIT HIGHWAY FOR 1.22 MILES, THEN RIGHT ON PRIVATE GRAVEL ROAD (PASSING THROUGH STARKER FOREST LOCKED GATE) FOR 0.20 MILES TO "Y" JUNCTION, THEN BEAR LEFT FOR 0.14 MILES TO "Y" JUNCTION, THEN BEAR RIGHT FOR 0.13 MILES TO "Y" JUNCTION, THEN BEAR RIGHT FOR 0.24 MILES TO "Y" JUNCTION, THEN BEAR LEFT FOR 0.16 MILES AND PARK, THEN WESTERLY FOR APPROXIMATELY 100 FEET TO THE NORTH-SOUTH 1/64 CORNER BETWEEN SECTIONS 8 AND 9, THEN WALK NORTH FOR 10 CHAINS TO CORNER. CORNER IS POOR FOR PREMARKING AND GPS CONTROL.

MONUMENTS AND ACCESSORIES FOUND (CONDITION AND SOURCE):

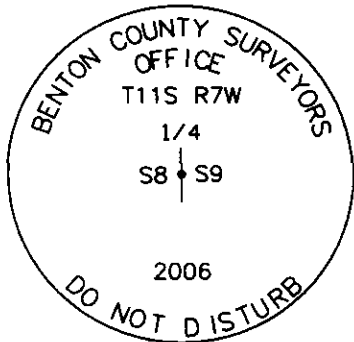
- 1 FOUND 3/4" X 21" BOLT WITH A 1" SQUARE TOP, DRIVEN THROUGH A 4" X 7" PINION GEAR, 3" BELOW GROUND LEVEL FOR CORNER POSITION. THE TOP 6" OF BOLT WAS BENT SOUTHWESTERLY. HELD SPIN HOLE FOR EXACT CORNER POSITION (FOUND ORIGINAL POST HOLE BY DIGGING, SET 3/4" X 20" BOLT WITH 7" X 4" PINION SLIPPED DOWN OVER IT PER RECORDS [02] AND [03])
(3/4" X 20" BOLT, 7" X 4" PINION PER RECORDS [05] AND [06])
(3/4" X 20" BOLT PER RECORDS [08] AND [14])
(3/4" BOLT IN PLACE PER RECORD [09])
(CORNER IN PLACE PER RECORD [10])
(BEGINNING AT 3/4" BOLT PER RECORD [12])
- 2 FOUND 27" ROTTEN D FIR STUMP, N59°39'E, 28.75 FEET TO CENTER. WE OPENED STUMP TO VISIBLE SCRIBING "BT". SET 10" LONG GALVANIZED SPIKE IN TOP CENTER FOR DISTANCE AND ANGLE MEASUREMENT
(9" FIR, N60°E, 28.64 FEET PER RECORDS [06], [09] AND [10])
- 3 FOUND 34" ROTTEN D FIR STUMP, S17°57'W, 21.89 FEET TO CENTER. WE OPENED STUMP TO VISIBLE SCRIBING "BT", SET ALUMINUM NAIL AND PLASTIC WASHER IN TOP CENTER OF STUMP FOR DISTANCE AND ANGLE MEASUREMENT
(8" FIR, S17°W, 21.78 FEET PER RECORDS [06], [09] AND [10])
- 4 FOUND 1 1/4" ANGLE IRON (BED FRAME), AT THE NORTH-SOUTH 1/64 CORNER BETWEEN SECTIONS 8 AND 9, S00°23'36"E, 661.36 FEET
(SET BED RAIL, 1 1/4" ANGLE IRON PER RECORD [12])
(1 1/4" ANGLE IRON, BED FRAME PER RECORD [06])

MONUMENT SET (PROCEDURES AND DESCRIPTION):

HELD THE STRAIGHT PORTION OF THE 3/4" X 21" BOLT FOR CORNER POSITION AS NOTED IN NO. 1 OF ABOVE MONUMENTS AND ACCESSORIES FOUND. MONUMENT WAS IN GOOD AGREEMENT WITH OTHER NOTED MONUMENTS AND ACCESSORIES FOUND AS ALSO NOTED ABOVE. REMOVED BOLT AND PINION GEAR AND SET A 2" X 31 1/2" GALVANIZED IRON PIPE WITH A 3 1/4" BRASS DISK CONCRETED IN THE TOP, 3" BELOW GROUND LEVEL AND MARKED AS SHOWN ON PAGE 2 OF 2. BURIED BOLT AND PINION GEAR ON THE SOUTH SIDE OF NEW MONUMENT IN A HORIZONTAL POSITION AND 6" BELOW GROUND LEVEL. SET A 6 FOOT ORANGE CARSONITE "SURVEY MARKER" POST 0.5 FEET NORTHWEST OF NEW MONUMENT.



MONUMENT DETAIL



3 1/4" BRASS DISK

LEGEND

- SET 5/8" X 30" REBAR WITH YELLOW PLASTIC CAP MKD "BENTON COUNTY SURVEYOR"
- FOUND MONUMENT AS NOTED
- (F) MEASUREMENT TO FACE
- (C) MEASUREMENT TO CENTER
- ⊙ GOVERNMENT MONUMENT SET AS SHOWN
- ⊗ BEARING TREE AS NOTED
- CSBT COUNTY SURVEYORS BEARING TREE
- BEARING TREE STUMP AS NOTED

NEW ACCESSORIES

- 1 SET REBAR (SEE LEGEND) 8" BELOW GROUND LEVEL N27°00'E, 22.88 FEET
- 2 SET REBAR (SEE LEGEND) 8" BELOW GROUND LEVEL S37°49'W, 34.01 FEET
- 3 11" D FIR FACE SCRIBED "1/4S9BT" S59°05'E, 21.86 FEET TO FACE SET ALUMINUM NAIL AND PLASTIC WASHER AT BOTTOM OF FACE FOR DISTANCE AND ANGLE MEASUREMENT
- 4 10" D FIR FACE SCRIBED "1/4S8BT" N86°54'W, 10.29 FEET TO FACE SET ALUMINUM NAIL AND PLASTIC WASHER AT BOTTOM OF FACE FOR DISTANCE AND ANGLE MEASUREMENT

NOTES

COMPASS DECLINATION IS 20° EAST ALL MEASURED DISTANCES AND BEARINGS ARE TO THE CENTER OF THE OBJECT, UNLESS OTHERWISE NOTED ALL BEARING TREES ARE PAINTED AND HAVE A BT TAG ATTACHED, FACING THE CORNER UNLESS OTHERWISE NOTED ALL NEW BEARING TREES HAVE A PLASTIC WASHER (STAMPED "BENTON COUNTY SURVEYOR CORNER RESTORATION") ATTACHED (BY ALUMINUM NAIL) TO THE FACE, BELOW THE "BT" FOR DISTANCE AND ANGLE MEASUREMENT UNLESS OTHERWISE NOTED THE DRAWING IS FROM AUTOCAD RELEASE 2006

THIS RESTORATION WAS PERFORMED AT THE DIRECTION AND APPROVAL OF THE BENTON COUNTY SURVEYOR DW

FIRM/AGENCY BENTON COUNTY SURVEYOR'S OFFICE
 ADDRESS 360 SW AVERY AVE CORVALLIS OR 97333, PH 766-6821
 PRESENT RAY WILSON, PLS, CS, DAVID M DEAN, PLS AND BERNIE ALTENBACH, SURVEY TECH
 EQUIPMENT LEICA TCR 1105 WITH TDS ON BOARD

REGISTERED
 PROFESSIONAL
 LAND SURVEYOR

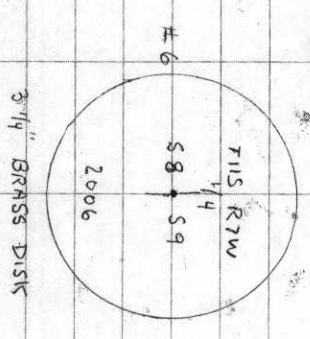
1/8/07 *David M. Dean*

OREGON
 JULY 13, 1984
 DAVID M DEAN
 2090

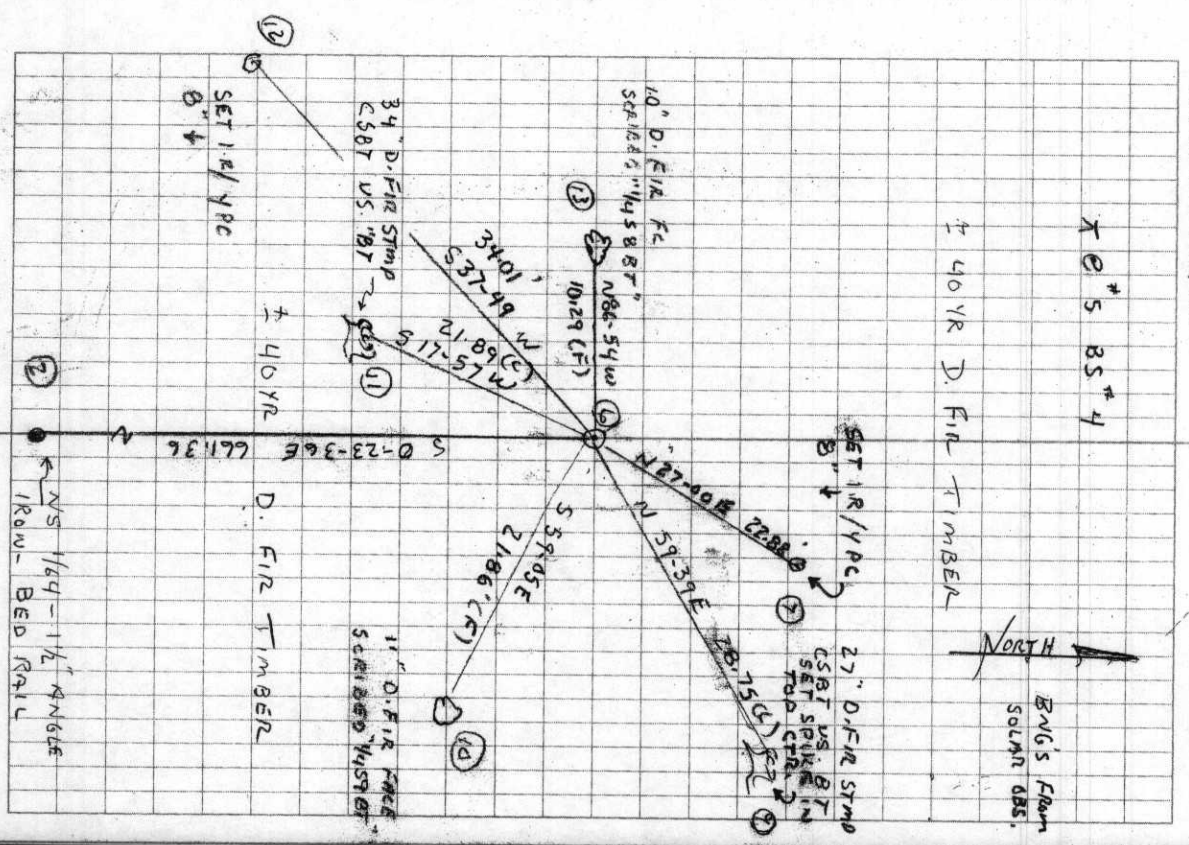
RENEWAL DATE. 12/31/07

117300546
 REMOUMENT 1/4 8/9 T115 R7W

Found 3/4" x 21" Bolt w/ 4" x 7" Pinion
 Gear around top 3" ↓ w/ top
 6" bent screw - held spin hole
 for exact cone position.
 Removed Bolt and Pinion Gear - set
 2" x 3 1/2" G.I.P. w/ 3 1/4" Brass Disk
 Conc. in top " Below Ground
 Level. Buried Bolt and Pinion
 on S. side new mon in hole position
 6" ↓
 Fd w.c.g. 8'5" - 1) 34" Rotten D. Fir
 Stamp (Site 2178) we opened to vs. "BT"
 2) " Rotten D. Fir Stamp (N 60° E 2864)
 we opened to vs. "BT".
 SET C' CARBONITE "SURVEY MARKER" POST
 OS NW of new mon



Cool, Clear
 36° F, 29.7" Hg
 LEICA TCR 1105/TDS
 D. DEAN 25/3
 R. WILSON
 B. ALTENBACH.



V ~~WITNESS~~

Cont. 27-

... 24 12-21 E. P. J. 207. FANS 139 bearing tree to S.E. cor. D. R. Hodges. ch. C.S. #116
The 1 cor. R.D. Hodges D.L.C. bears S. 29° 55' E. 2714. V 21 45
Witnesses: Earl Withycomb, J.W. Holman, Hodges. March 6-1914 B.W. D.C.S. (2) 8 10
A.J. Johnson the N.W. cor. of the Ellredge Hartless D.L.C. #51. T. 12 S. R. 6 W
Both old trees. Set stone 14x8x7"

Witnesses: A.J. Johnson, Deering, Earl Withycomb March 23-1914 B.W. D.C.S.
Oak 24" N 55° E. 1.78 std
" 20 S. 87° E 3.14 "

C.S. #207
J.H. Chiles 147
April 17-27-14

1/4 sec. cor. bet. Secs. 7+12 - W. bdy. 11-7, ^{Found parts of stone, set 1" x 20" pipe, June 1935. R.C.S.} set stone, 8" below surface,
Burnt fir 50" S. 34° E. 1.20 stump 30' high
Mark fir 30" S. 47° E. 2.42. Marked fir 7" N. 5° E. 144 of a chain

1/4 sec. cor. bet Secs. 7 + 18 - set 5" x 7" x 10" stone from which
fir 48" N. 61° W. 1.21 Green-standing. ^{Dec. 1936} cor. gone. Replaced with 5 1/2" x 22" iron rod
Mark fir 20" S. 46 1/4° W. .945
FIR 28" S. 10° E. .506
" 32" S. 86 1/2° W. .362 down
Mkd " 24" S. 22 1/2° E. .538
" " 2" S. 46 1/2° W. .331 W.C.G.
R.J. Stewart and Victor Plank

1/4 sec. cor. bet. Secs. 7 + 8 - No trace of old cor. or trees
Set 1" x 24" iron rod on true sec. line, equidistant from sec. cors.
Mark fir 28" S. 10° E. .506 Fir 32" S. 86 1/2° W. .362 down

C.S. 207

1/4 sec. cor. bet. Secs. 8 + 17 set Cedar limb, from which ^{Replaced with 1" x 24" iron rod Dec. 1936}
Cedar 36" S 12° W .510. other stump but no marks. S. 3° E. 91
Mark fir 18" S. 60 1/2° W. .282
Cedar 4" in clump N 77° 56' E 1.303
Spike in stump 36" S. 12° W. .510
FIR 17" S. 81° 20' W. .840
Ash 30" N. 26° 40' W. .682
Near rail N. 1.736

1/4 sec. cor. bet Secs. 8 + 9. set 7" x 4" pinion down over 3/4" x 20 bolt
Both trees dead. fir 12" N 80° E. 20 - stump 15" S. 85° W. 80, Dec. 1, 1936
Mark fir 22" S. 35 3/4° W. .865
Witnesses, J.H. Chiles. To all of above corners R.J. Stewart, Victor Plank
Corner in place
Mkd. fir 9" N 60° E. .434
" 8" S 17° W. .330
W.C.G. Attorney
R.J. Stewart, Victor Plank

C.S. # 208

1/4 sec. cor bet Secs. 14 + 15 set heart oak post T13 S R 6 W
Oak stumps S. 75° W. .27 Other oak stump down, note checks S. 62° E. 26
Mark oak 12" S. 86° 05' W. 2.36 - Fir 60" S. 62 3/4° E. 2.59
" " S. 85° 24' E. 2.768 - 4" spike angle = 2.360 H=21. <sup>post partly decayed set
Calv. pipe 1/2" dia x 12" in top
2.577 - 1" spike angle = 2.576 April 19-40
W.C.G. Adrien Seitz</sup>

COR. OF SECS. 14, 15, 22 + 23, set yew post. all trees gone
set by running lines S + W + N + S.
Mark. FIR 9" N. 47 1/2° E. .465 FIR 10" S. 16° E. .460, FIR 8" S. 25 1/2° W. .353, FIR 18" N. 18° W. 712

$\frac{1}{4}$ -Section corner between sections 8 and 9, twp. 11-7

Reestablishment by W. C. Galloway

Date April, 1914

Set 7" x 4" pinion down over $\frac{3}{4}$ " x 20" bolt
Both trees dead. Fir 12" in diam bears N 80° E
Stump 15" in diam bears S 85° W
Fir 22" in diam bears S 35 $\frac{3}{4}$ °W

.20 chains
.80 chains
.865 chains

1179
1014

Witnesses J. H. Chiles

Replacement by W. C. Galloway

December 1, 1936

Corner in place

Fir 9" in diam bears N 60° E

Fir 8" in diam bears S 17° W

.434 chains
.330 chains

Witnesses R. J. Stewart and Victor Plunkett

117300540