

BENTON COUNTY CORNER RESTORATION FORM

117300660N2

SECTION 5 & 4 TOWNSHIP 11S RANGE 7W W.M. BLM ID _____

DLC _____ CORNER NORTH ONE SIXTEENTH

DATE 6/28/94 CORNER RESTORATION FIELD BOOK ____ PAGE ____

ORIGINAL: 1/2" IRON PIPE, FOUND IN PLACE. (HARD COPY #00001)

- 24" FIR S20°E 0.05 CHS. NOW ROTTEN UPROOT AS PER COUNTY RESTORATION #989.
- 30" FIR N82°53'E 0.72 CHS. NOW 26" STUMP IN PLACE.
- 24" DOUBLE FIR S04°45'E 1.10 CHS. NOW 48" DOUBLE FIR STUMP IN PLACE.

REWITNESSED: COUNTY RESTORATION #989

- 6" FIR N15°E 28.3' NOW WINDFALL IN PLACE.
- 11" FIR S01/2°W 55.3' NOW 17" FIR STUMP 6' TALL IN PLACE. DID NOT OPEN FACE.

REWITNESSED:

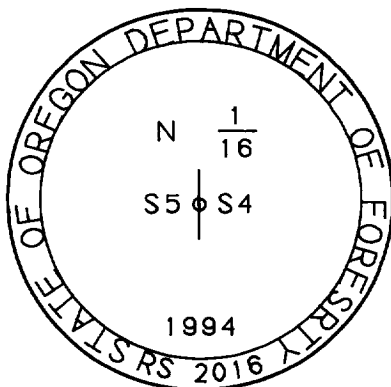
SET 1 1/2" X 30" ALUMINUM PIPE WITH 3 1/4" ALUMINUM CAP, 28" IN GROUND OVER 1/2" IRON PIPE AND FROM WHICH A:

- 17" FIR STUMP (C.C.R.#989) S01/2°W 54.79' TO A WASHER MARKED RS2016 AND NAILED INTO FACE.
- 7" ALDER N21°W 39.32' TO A WASHER MARKED RS2016 AND NAILED INTO BOTTOM OF FACE AND BARKED SCRIBED "N1/16 S5 BT".

SET 6' WHITE CARSONITE POST 1.0' S.E.
YELLOW METAL LOCATION PLAQUE NAILED TO S.W. B.T..

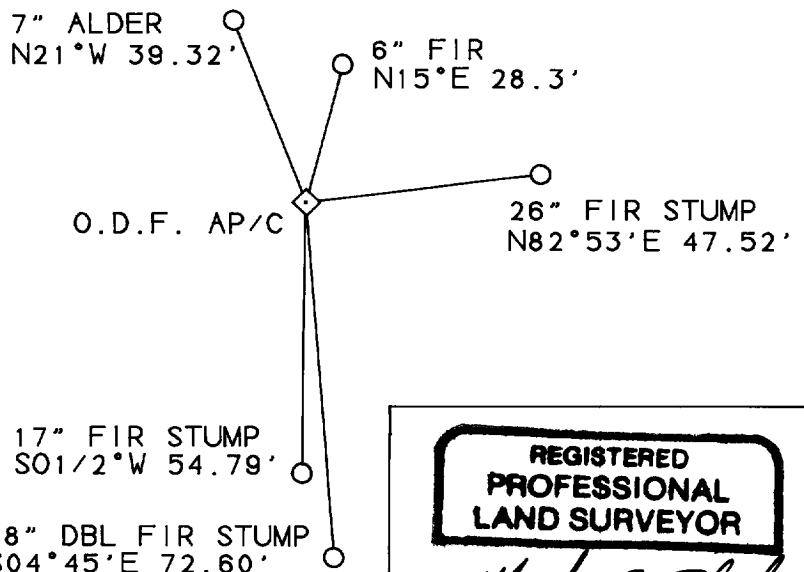
NOTE: BEARINGS WERE OBSERVED WITH HAND COMPASS AND DISTANCES WERE MEASURED WITH STEEL TAPE.

MONUMENT DETAIL



MAG. DEC. 19 3/4° E

SKETCH (SCALE 1" = 40')



NOTES:

17" FIR STUMP
S01/2°W 54.79'

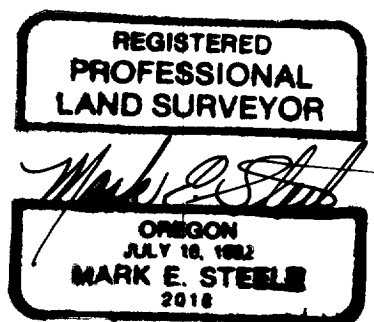
48" DBL FIR STUMP
S04°45'E 72.60'

WITNESS:

CHRIS J. HUMCKE

FIRM/AGENCY:

OREGON DEPARTMENT OF FORESTRY
24533 ALSEA HIGHWAY
PHILOMATH, OREGON 97370



EXPIRES 12-31-94