

117400240

BENTON COUNTY CORNER HISTORY FORM, PAGE 1 OF 1, 117400240H

DATE 11/19/2009

TOWNSHIP 11 SOUTH, RANGE 7 WEST, WILLAMETTE MERIDIAN; SECTION 27 CORNER WEST 1/4
DONATION LAND CLAIM NONE CORNER NONE

COMMON CORNER(S):
EAST 1/4 SECTION 28

CORNER RECORDS (PREVIOUS RENEWALS, SURVEYS, ETC.)

[01] GENERAL LAND OFFICE (GLO) NOTES BY DENNIS HATHORN, D.S. DATED MAY 1855. NORTH BET SECS 28 & 27 . . . 40.00 CHS SET 1/4 SEC. POST FROM WHICH A FIR 30 IN DIA BEARS S53°E 187 LKS (123.42 FEET); A FIR 40 IN DIA BEARS N14°W 193 LKS (127.38 FEET).

[02] COUNTY SURVEY NO. 519 (OLD NO. 240) FIELD NOTES (FIELD BOOK 20, PAGE 5) BY W. C. GALLOWAY, C.S. DATED MAY 4, 1915. STONE 6" X 8" X 16". 2 TREES DOWN. FIR 18 S74°10'E, 1. 519 CHS (100.25 FEET); FIR 8" N28°35'W, 0. 826 CHS (54.52 FEET).

[03] BENTON COUNTY CORNER RESTORATION BOOK NO. 1, PAGE 95 BY W. C. GALLOWAY, C.S. DATED MAY 26, 1915. 1/4 SEC. COR. BETWEEN SECS. 27 & 28 T11S, R7W. STONE 6" X 8" X 16" ALREADY SET. BOTH TREES DOWN – WIND FALL. FIR 18" BEARS S74°10'E, 1. 519 CHS (100.25 FEET); FIR 8" BEARS N28°35'W, 0. 826 CHS (54.52 FEET).

[04] BENTON COUNTY CORNER RESTORATION NO. 1110. THIS IS A TRANSCRIBED COPY OF RECORD [03] AND MAY CONTAIN ERRORS AND/OR OMISSIONS.

[05] BENTON COUNTY MAP NO. 11-7-00015 BY W. C. GALLOWAY, C.S. DATED JUNE 1915 BY W. C. GALLOWAY, C.S. STONE 6" X 8" X 16". FIR 18" S74°10'E, 1. 519 CHS (100.25 FEET); FIR 8" N28°35'W, 0. 826 CHS (54.52 FEET).

[06] BONNEVILLE POWER ADMINISTRATION (BPA). SANTIAM-TOLEDO NO. 1 MAP BY BPA DATED MAY 16, 1957. STONE IN FENCE CORNER.

[07] COUNTY SURVEY NO. 5037 BY B. OSBURN SHAW, P.L.S. DATED FEBRUARY 24, 1971. FD STONE "CS" SET 1/2" ROD ON SOUTH SIDE OF STONE 2.0 FEET NW OF FENCE COR.

[08] COUNTY SURVEY NO. 5983 BY JOHN SEADERS, P.L.S. NO DATE GIVEN (FILED JANUARY 9, 1976). FD. STONE C.S.

[09] COUNTY SURVEY NO. 6404 BY RICHARD W. FAIL, P.L.S. DATED APRIL 6, 1977. FD STONE W 1/4 COR SEC. 27.

[10] COUNTY SURVEY NO. 6639 BY RICHARD W. FAIL, P.L.S. DATED APRIL 7, 1978. FD STONE 1/4 COR.

[11] COUNTY SURVEY NO. 7212 BY RUSSELL T. PINARD, P.L.S. DATED FEBRUARY 13, 1981. 1/4 CORNER FD. STONE AT FENCE CORNER.

[12] COUNTY SURVEY NO. 7690 BY JIM S. PETERSON, P.L.S. DATED AUGUST 29, 1984. FOUND 6" X 8" X 16" STONE AT FENCE CORNER. STONE IS 6" BELOW GROUND. FOUND 5/8" IRON ROD ON WEST EDGE OF STONE.

[13] COUNTY SURVEY NO. 8125 BY DAVID A. LOOMIS, P.L.S. DATED MAY 4, 1988. CORNER NOT TIED OR DESCRIBED.

[14] COUNTY SURVEY NO. 10369 BY JIM S. PETERSON, P.L.S. DATED JULY 13, 2001. 1/4 COR. SECS. 27 & 28 FD 6" X 8" X 16" STONE AS PER GHC 11-7-00015.

NOTES:

THIS IS A MICROSOFT WORD 97 DOCUMENT NAMED "17400240" CREATED FROM A BOILER PLATE DOCUMENT NAMED "HISTORY", WHICH HAS A STYLESHEET NAMED "CORNER" ATTACHED TO IT. INFORMATION IN BOLD ITALICS IS COUNTY STAFFS' INTERPRETATION OF THE RECORD.

FIRM/AGENCY: BENTON COUNTY SURVEYOR'S OFFICE
ADDRESS: 360 S.W. AVERY AVE. CORVALLIS OR 97333; PH. 766-6821
RESEARCH BY: DAVID M. DEAN, P.L.S.
DATA ENTRY BY: SAME

BENTON COUNTY CORNER RESTORATION FORM, PAGE 1 OF 2, 117400240R2
SEE CORNER HISTORY FORM FOR RECORDS ETC.

CORNER RESTORATION FIELD BOOK NUMBER 28 PAGE(S) 14 DATE 11/25/2009
TOWNSHIP 11 SOUTH, RANGE 7 WEST, WILLAMETTE MERIDIAN; SECTION 27 CORNER WEST 1/4
DONATION LAND CLAIM NONE CORNER NONE
CONDITION REPORT _____; REFERENCED OUT _____; RENEWED XX; SURVEYED IN _____

LOCATION AND COMMENTS:

CORNER IS LOCATED IN A FLAT AREA AT THE CORNER OF FENCES RUNNING NORTH-SOUTH AND EAST, WITH YOUNG D. FIR TIMBER TO THE SOUTH AND MOSTLY BRUSH TO THE NORTH. TO REACH CORNER FROM THE JUNCTION OF TUM-TUM ROAD AND HARRIS ROAD, TRAVEL SOUTHERLY ON TUM-TUM ROAD FOR 0.07 MILES; THEN RIGHT ON PRIVATE STARKER FOREST ROAD FOR 0.09 MILES; THEN BEAR RIGHT ON SPUR FOR 0.32 MILES (FIRST PART OF THIS SPUR IS A DIRT ROAD); THEN BEAR LEFT ON SPUR FOR 0.10 MILES; THEN BEAR RIGHT ON SPUR FOR 0.19 MILES AND PARK; THEN WALK NORTH ALONG FENCE LINE FOR APPROXIMATELY 600 FEET TO CORNER. CORNER IS POOR FOR PRE MARKING AND GPS CONTROL.

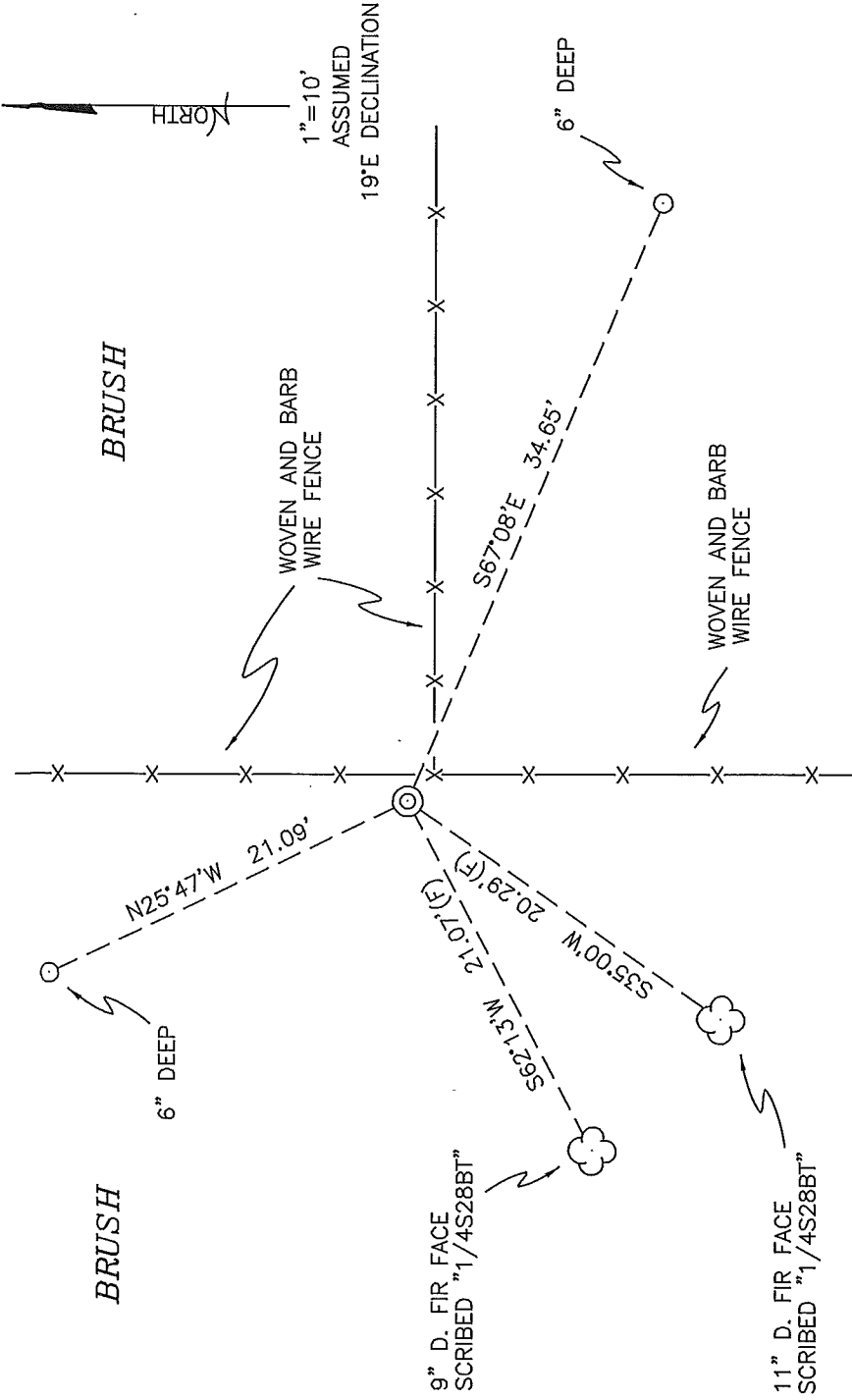
MONUMENTS AND ACCESSORIES FOUND (CONDITION AND SOURCE):

1. FOUND 18" X 7" X 6" SANDSTONE, 8" BELOW GROUND LEVEL FOR CORNER POSITION. STONE WAS UNMARKED BUT FIRMLY SET AND UNDISTURBED WITH A 1/2" X 18" IRON ROD ON THE WESTERLY SIDE OF STONE AND 14" BELOW GROUND LEVEL.
(SET 1/4 SEC. POST PER RECORD [01]).
(6" X 8" X 16" STONE AGREEING WITH TWO DOWN GLO BEARING TREES PER RECORD [02]).
(6" X 8" X 16" STONE ALREADY SET PER RECORD [03]).
(6" X 8" X 16" STONE PER RECORDS [05], [12] AND [14]).
(STONE IN FENCE CORNER PER RECORD [06]).
(FOUND STONE CS SET 1/2" ROD ON SOUTH SIDE OF STONE, 2 FEET NW OF FENCE CORNER PER RECORD [07]).
(FOUND STONE CS PER RECORD [08]).
(FOUND STONE W 1/4 SEC 27 PER RECORD [09]).
(FOUND STONE 1/4 COR PER RECORD [10]).
(1/4 CORNER FD STONE AT FENCE CORNER PER RECORD [11]).

GENERAL LAND OFFICE AND COUNTY SURVEYOR'S BEARING TREES ARE MISSING.

MONUMENT SET (PROCEDURES AND DESCRIPTION):

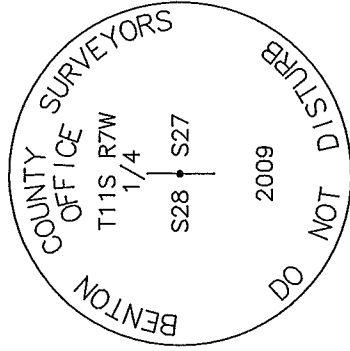
HELD THE CENTER HIGH POINT ON SAID 18" X 7" X 6" UNMARKED STONE FOR EXACT CORNER POSITION. REMOVED STONE AND 1/2" X 18" IRON ROD AND SET A 2" X 31 1/2" GALVANIZED IRON PIPE WITH A 3 1/4" ALUMINUM DISK CONCRETE IN THE TOP, 6" BELOW GROUND LEVEL AND MARKED AS SHOWN ON PAGE 2 OF 2. PLACED THE 1/2" IRON ROD INSIDE NEW MONUMENT AND 12" BELOW GROUND LEVEL. BURIED THE STONE ON THE SOUTHERLY SIDE OF NEW MONUMENT IN A VERTICAL POSITION AND 9" BELOW GROUND LEVEL. SET A 6 FOOT ORANGE CARSONITE "SURVEY MARKER" POST 0.5 FEET EAST OF NEW MONUMENT.



±30 YEAR OLD
D. FIR

±12 YEAR OLD
D. FIR

MONUMENT DETAIL



3 1/4" ALUMINUM DISK

LEGEND

- SET 5/8" X 30" REBAR WITH YELLOW PLASTIC CAP MKD "BENTON COUNTY SURVEYOR"
- FOUND MONUMENT AS NOTED.
- (F) MEASUREMENT TO FACE
- (C) MEASUREMENT TO CENTER
- ◎ GOVERNMENT MONUMENT SET AS SHOWN
- ◎ GOVERNMENT MONUMENT FOUND AS SHOWN
- ☁ BEARING TREE AS NOTED
- C.S.B.T. COUNTY SURVEYORS BEARING TREE
- GLO GENERAL LAND OFFICE
- ☀ BEARING TREE STUMP AS NOTED
- X- FENCING AS NOTED

NEW ACCESSORIES:

1. SET REBAR (SEE LEGEND) 6" BELOW GROUND LEVEL S67°08'E, 34.65 FEET.
2. SET REBAR (SEE LEGEND) 6" BELOW GROUND LEVEL N25°47'W, 21.09 FEET.
3. 11" D. FIR FACE SCRIBED "1/4S28BT" S35°00'W, 20.29 FEET TO FACE. SET ALUMINUM NAIL AND PLASTIC WASHER BELOW SCRIBING FOR DISTANCE AND ANGLE MEASUREMENT.
4. 9" D. FIR FACE SCRIBED "1/4S28BT" S62°13'W, 21.07 FEET TO FACE. SET ALUMINUM NAIL AND PLASTIC WASHER BELOW SCRIBING FOR DISTANCE AND ANGLE MEASUREMENT.

NOTES:

COMPASS DECLINATION IS 19° EAST. ALL MEASURED DISTANCES AND BEARINGS ARE TO THE CENTER OF THE OBJECT, UNLESS OTHERWISE NOTED. ALL BEARING TREES ARE PAINTED AND HAVE A B.T. TAG ATTACHED, FACING THE CORNER UNLESS OTHERWISE NOTED. ALL NEW BEARING TREES HAVE A PLASTIC WASHER (STAMPED "SURVEYOR MARKER DO NOT REMOVE") ATTACHED BY AN ALUMINUM NAIL TO THE FACE, BELOW THE "BT" FOR DISTANCE AND ANGLE MEASUREMENT UNLESS OTHERWISE NOTED. THE DRAWING IS FROM AUTOCAD RELEASE 2008.

THIS RESTORATION WAS PERFORMED AT THE DIRECTION AND APPROVAL OF THE BENTON COUNTY SURVEYOR *[Signature]*

REGISTERED
PROFESSIONAL
LAND SURVEYOR

12/31/09 *David M. Dean*

OREGON
JULY 13, 1984
DAVID M. DEAN
2090

FIRM/AGENCY: BENTON COUNTY SURVEYOR'S OFFICE
ADDRESS: 360 S.W. AVERY AVE. CORVALLIS, OR. 97333; PH. 766-6821
PRESENT: DAVID M. DEAN, P.L.S. AND BERNIE ALTENBACH, SURVEY TECH.
EQUIPMENT: LEICA TCR 1105 WITH TDS ON BOARD