

CORNER FILE TRACKING

H:\Survey\Corners\Misc\Filetrac.doc

11/23/98

CORNER NUMBER
117400500

STEP	HISTORY()	RESTORATION()
Form Prepared, DB	6-13-05	6-20-05
Field Inspection, DB	6-16-05	6-16-05
Form Checked, DB		
Form Edited, DB		
Form Signed, DB		
Counter Index	6-17-05	6-17-05
GIS Index	6-17-05	6-17-05
Authorize Payment, DB	—	—
Archive Digital Files		
Collect Documents	6-17-05	6-17-05
Scanned	7/15/05	7/15/05
Copy For Filming		
Filed, DB		
Finish index (count unit)	6-16-05	6-16-05
Filmed (Archived), DB		

(DB) = Entry needed in database (Access).

COMMENTS:

C.S. 79 N.W. Corner of Jacob Halter D.L.C. 73 110 S. R. 7 W.
 by W.C. Galloway Set a 7/8" Steel rod proportional distance on sec. line at north fence
 Adrian Sciffs for corner and a 1" steel rod at south road fence. S. 0° 30' E. .53
 Aug. 1940

C.S. #136 N.E. Corner of Alfred William Cl. 55 T. 11 S. R. 5 W.
 by F.M. Wilkes Set a 1/2" Iron rod
 J. Slater and Oak 24° S. 73° W. .88 chs. Std.
 Elmer Maxfield " 15° N. 66° E. .63 " "
 Apr. 30, 1913 " 18° N. 15 1/2° W. .59 " "

C.S. # 199 Cor. Secs 9, 10, 15 & 16 T. 11 S., R. 7 W. March 20, 1941
 Burt Wilkes Found 1 1/2" Iron pipe at West face of large Bolt with 3" Oct. Head - used Bolt as cor.
 R.W. McBride Name of original Trees standing.
 R. Underwood Monument is in Dear Yard S.W. of S.W. corner of House
 (Recording only)

W.C. Galloway S.W. Corner John W Starr D.L.C No. 54 - T. 14 S. R. 6 W.
 C.S. 336 Set 1 1/4" Galv. Pipe for corner from which
 Sept. 19, 1938 A Fir .50" in dia bears N 87° W. .45 lks.
 " " 50" " " " N. 50° E. 16 " Burned out - Down
 Mark " Maple 20" " " " S. 56° E. 16.8 " Nail on N. side

Burt Wilkes Cor. Secs. 30 & 31 - of 6 W and 25 & 36 T. 14 S. R. 7 W. Mar 10, 1941
 C.S. 336 Set 1/2" x 30" Galv. Pipe in original stake hole
 Witness All three fir B.T.s standing - Cedar in sec. 31 cut about 8' high
 Roy W. McBride

1/4 Sec. Cor. Secs. 31 & 36, T. 14 S. R. 6 & 7 W. Mar 10, 1941
 Same as Set 1/2" x 30" Galv. Pipe, from which
 above. A Fir 12 (Now 21) bears S. 37° E. 13.86' = 21 links Std.
 Mark Fir 28" " N. 30° W. 18.2' = 27.6 "
 " " Stamp 36" " N. 37° E. 25.08' = 38.0 "

1/4 sec. cor. 1/4 sec. cor. Secs. 25 & 30 - T. 14 S. R. 6 & 7 W. April 24, 1941
 Ralph McBryde Set 1/2" x 30" Galv. Pipe Original Hole.
 Bob Underwood Both B.T.s standing & agree - S.W. Tree dead.
 Mark Hemlock 16" in dia. Bears S. 72° W. 58.9 H.C. slope L = 56.47' = 85.6 links

B. Wilkes 1/4 sec cor. between Secs. 25 and 36 - 14-7 W.C. to true corner & 40.0' S. of True Cor.
 Witness Set stone 3" x 12" x 30" + on top. W.C. on N. face of This Cor. was established on
 Geo Baeur Cedar 30" in dia. Bears S. 22 1/2° E. 70.1' = 1.062 } proportional dist. and 40.0' S. of
 Bob Underwood Fir 10" " " " S. 12 3/4° E. 47.3' = .716 } true line between sec. cors.
 True point comes in Alsea River.

~~same~~ B.W. Cor. to Secs. 25, 26, 35 & 36. 14-7 April 19, 1941
 Bob Underwood Set stone 3" x 8" x 15" Marked + on top C.S. on face Orig Hole.
 Ray McBride Cedar (Alderia 1 set marks) 10" (14") S. 54° E. 104.6' std. = 158.5'
 Ralph McBryde Fir 40 (49' ins in dia bears N. 61 1/2° E. 38.3' No. 115. .580'
 Marks Fir 18" in dia bears S. 88 1/2° W. 123.3' 1.868
 " Cedar 34" " " " N. 2° 15' W. 93.46' - 8° slope L = 91.56' = 138.7'

Corner sections 9, 10, 15 and 16, Twp. 11 s., R. 7 W.

1022

Reestablishment by W. C. Galloway

March 20, 1941

Found $1\frac{1}{2}$ " iron pipe at west face of large bolt with 3" Oct. head, used bolt as corner, none of original trees standing, monument is in yard S. W. of S. W. corner of house.

Rd. 1 1/2" I. Pipe & 2 1/2" hex. shaft by Thomas J. Owens - January 1963 C.S. 3733

S.W. Cor house N60°E (Mag bearing)

5/8" square rod West " "

3/8" " " South in fence " "

14.5 Ft.

144 "

64.5 "

DATE 06/13/2005

TOWNSHIP 11 SOUTH, RANGE 7 WEST, WILLAMETTE MERIDIAN; SECTION 9 CORNER S.E.
 DONATION LAND CLAIM NONE CORNER N/A

COMMON CORNER(S):

S. W. SECTION 10
 N. W. SECTION 15
 N. E. SECTION 16

RECORDS (INFORMATION IN *BOLD ITALICS* IS COUNTY STAFFS' INTERPRETATION OF THE RECORD)

BASED ON EXTENSIVE RESEARCH AND RECOVERY OF EVIDENCE, THIS OFFICE HAS DETERMINED THAT MOST GENERAL LAND OFFICE SURVEYORS MEASURED TO THE FACE OF BEARING TREES.

- [01] GENERAL LAND OFFICE (GLO) NOTES BY HARVEY GORDON D. S., DATED MAY 14, 1855. *SET CORNER SECTION POST FOR SECTION 9, 10, 15, 16, FROM WHICH A FIR 60" DIA. BEARS S68°W, 50 LKS (33.00 FEET), A FIR 12" DIA. BEARS S80°E, 72 LKS (47.52 FEET), A FIR 6" DIA. BEARS N67°E, 88 LKS (58.08 FEET). A FIR 24" DIA. BEARS N1 1/2°W, 954 LKS (629.64 FEET).*
- [02] BENTON CORNER RESTORATION BOOK NO. 1, PG 228 BY W. C. GALLOWAY C. S., DATED MARCH 20, 1941. *CORNER SECTIONS 9, 10, 15, 16, FOUND 1 1/2" IRON PIPE AT WEST FACE OF LARGE BOLT WITH 3" OCTAGON HEAD, USED BOLT AS CORNER, NONE OF THE ORIGINAL TREES STILL STANDING. MONUMENT IS IN DOOR YARD S. W. OF S. W. CORNER OF HOUSE.*
- [03] BENTON CORNER RESTORATION NO. 1022 BY W. C. GALLOWAY C. S., DATED MARCH 20, 1941. *THIS IS TRANSCRIBED FROM RECORD NO. [02] AND MAY CONTAIN ERRORS AND/OR OMISSIONS.*
- [04] BENTON COUNTY MAP NO. 11-7-00001 BY W. C. GALLOWAY C. S., DATED APRIL 1913 TO FEBRUARY 1915. *1 1/2" PIPE ON WEST EDGE OF BOLT FOR WITNESS, LARGE BOLT 3" OCTAGON NUT FOR CORNER, NO RECORD, NO ORIGINAL BEARING TREES FOUND, USED BOLT AS CORNER.*
- [05] BENTON COUNTY SURVEY NO. 1520 (OLD NO. 199) FIELD NOTES (FIELD BOOK NO. 82 PG 39-44) BY BURT WILKES D. C. S., DATED MARCH 20, 1941. *1 1/4" PIPE. LARGE BOLT WITH OCTAGONAL HEAD 3" DIA. EAST OF PIPE EDGE.*
- [06] BENTON COUNTY SURVEY NO. 1721 (OLD NO. 199) FIELD NOTES (FIELD BOOK NO. 82 PG 95-112) BY CURT HANSON D. C. S., DATED JULY 16, 1945. *SECTION CORNER, BOLT 3" HEAD*
- [07] BENTON COUNTY MAP NO. 11-7-00008 BY BENTON COUNTY SURVEYOR'S OFFICE, NO DATE GIVEN. *1 1/2" PIPE WEST EDGE OF NUT FOR WITNESS, 3" OCTAGONAL NUT FOR CORNER.*
- [08] BENTON COUNTY SURVEY NO. 3733 BY THOMAS OWENS P.L.S., DATED JANUARY 1963. *N.E. CORNER OF SEC 16, 1 1/2" IRON PIPE, 2 1/2" HEX SHAFT, 5/8" SQUARE ROD SOUTH 64.5 FEET.*
- [09] BENTON COUNTY SURVEY NO. 6172 BY VERLE C. MOORE P. L. S., DATED JUNE 1, 1976. *FOUND 1 1/2" PIPE WITH HEXAGONAL SHAFT INSIDE.*
- [10] BENTON COUNTY SURVEY NO. 7491 BY JOHN D. HOWELL P. L. S., DATED JANUARY 21, 1983. *FOUND 3" HEX. NUT GALLOWAY'S COUNTY SURVEY NO. 172.*
- [11] BENTON CORNER RESTORATION NO. 3123 BY JOHN HOWELL P. L. S. DATED JANUARY 25, 1983. *TRANSCRIBED FROM RECORD NO. [10].*

- [12] BENTON CORNER RESTORATION NO. 3330 BY JIM S. PETERSON P. L. S., DATED NOVEMBER 20, 1984. **FOUND 1 1/2" IRON PIPE BESIDE BOLT. BOLT IS 16" LONG AND WAS LAID DOWN. RESET BOLT IN ORIGINAL HOLE AND DROVE 6" BELOW SURFACE. PIPE IS ON WEST EDGE OF BOLT. ALSO FOUND 3/4" SQUARE IRON ROD 64 FEET SOUTH OF CORNER AS PER C. S. NO. 3733. THIS BOLT IS AS PER GALLOWAY HARD BOARD NO. 11-7-1.**
BT'S SET: **FIR 8" DIA. BEARS N33°E, 95 FEET SCRIBED "T11SR7WS10BT"**
ALDER 30" DIA. BEARS S01°E, 52.7 FEET, SCRIBED "T11SR7WS15BT"
MAPLE 12" DIA. BEARS S39°W, 65.0 FEET, SCRIBED "T11SR7WS16BT"
FIR 30" DIA. BEARS N28°W, 73.4 FEET, SCRIBED "T11SR7WS9BT"
- [13] BENTON COUNTY SURVEY NO 8367 BY JOHN D. HOWELL P. L. S., DATED DECEMBER 15, 1989. **FOUND 3" OCTAGON BOLT AT CORNER AND 4 BEARING TREES AS PER CORNER CARD 3330.**
- [14] BENTON COUNTY SURVEY NO. 8836 BY JOHN D. HOWELL P. L. S., DATED APRIL 5, 1993. **FOUND 3" BOLT AS PER C. R. 3330.**
- [15] PETERSON SURVEY BY JIM PETERSON P. L. S., DATED MAY 20, 2005. **FOUND 3" OCTAGONAL SHAPE BOLT WITH 1 1/2" IRON PIPE ALONGSIDE PER GALLOWAY HARD COPY 11-7-00001**
BT'S FOUND: **14" FIR N33°E, 95 FEET, HEALED FACE**
32" ALDER S01°E, 52.7 FEET, BARK SCRIBING VISIBLE.
20" MAPLE S39°W, 65.0 FEET, HEALED FACE
32" FIR STUMP N28°W, 73.4 FEET, SCRIBING VISIBLE
FOUND 3/4" SQUARE IRON ROD, SOUTH 64 FEET, CORNER LIES IN SWAMPY AREA 40 FEET EAST OF FORK IN GRAVEL ROAD.

NOTES:

THIS IS A MICROSOFT WORD 2000 DOCUMENT NAMED "17400500" CREATED FROM A BOILER PLATE DOCUMENT NAMED "HISTORY", WHICH HAS A STYLESHEET NAMED "CORNER" ATTACHED TO IT.

FIRM/AGENCY: BENTON COUNTY SURVEYOR'S OFFICE
ADDRESS: 360 S.W. AVERY AVE. CORVALLIS OR 97333; PH. 766-6821
RESEARCH BY: DAVID M. DEAN, P.L.S.
DATA ENTRY BY: ADAM CASALEGNO, SURVEY TECH.

BENTON COUNTY CORNER RESTORATION FORM, PAGE 1 OF 2, 117400500R2**SEE CORNER HISTORY FORM FOR RECORDS ETC.**

CORNER RESTORATION FIELD BOOK NUMBER 22 PAGE(S) 33 DATE 06/16/2005
 TOWNSHIP 11 SOUTH, RANGE 7 WEST, WILLAMETTE MERIDIAN; SECTION 9 CORNER S.E.
 DONATION LAND CLAIM NONE CORNER N/A
 CONDITION REPORT ; REFERENCED OUT ; RENEWED X; SURVEYED IN

LOCATION AND COMMENTS:

CORNER IS LOCATED ±40 FEET EAST OF FORK IN ROAD IN A SWAMPY GRASSY AREA. TO REACH CORNER FROM THE JUNCTION OF DEVITT ROAD AND GROVER ROAD, TRAVEL EAST ON GROVER RD FOR 0.30 MILES UNTILL YOU REACH JUNCTION. PARK AT JUNCTION THEN WALK ±40 EAST TO CORNER. CORNER IS OK FOR PREMARKING AND GPS CONTROL.

MONUMENTS AND ACCESSORIES FOUND (CONDITION AND SOURCE):

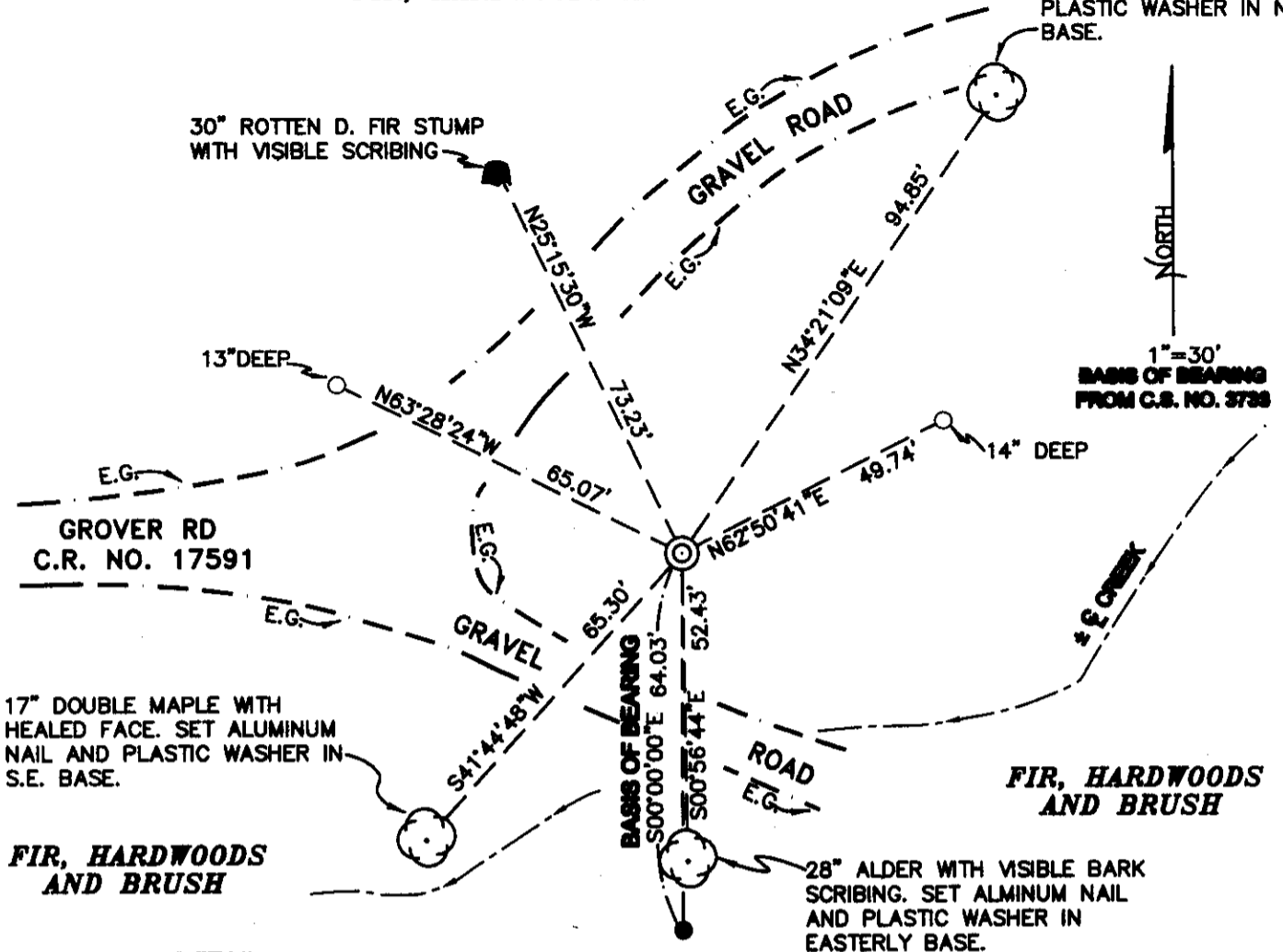
1. FOUND 2" X 19" BOLT WITH HEXAGON SHAPED HEAD 8" BELOW GROUND LEVEL FOR CORNER POSITION.
 (SET CORNER SECTION POST FOR SECTIONS 9, 10, 15, 16, PER RECORD [01]).
 (FOUND 3" BOLT OCTAGON SHAPED HEAD USED FOR CORNER POSITION PER RECORDS [02]-[05]).
 (SECTION CORNER 3" BOLT PER RECORD [06]).
 (3" OCTAGONAL NUT FOR CORNER PER RECORD [07]).
 (2 1/2" HEX SHAFT PER RECORD [08]).
 (FOUND 3" HEX NUT PER RECORD [10] AND [11]).
 (FOUND 16" LONG BOLT LAID DOWN, RESET BOLT IN ORIGINAL HOLE AND DROVE DOWN 6" BELOW GROUND LEVEL PER RECORD [12]).
 (FOUND 3" OCTAGON BOLT AT CORNER PER RECORD [13]).
 (FOUND 3" BOLT PER RECORD [14]).
 (FOUND 3" OCTAGONAL SHAPE BOLT PER RECORD [15]).
2. FOUND 1 1/2" X 33" IRON PIPE WITH A 1/2" X 12" SQUARE SPIKE INSIDE, ON THE WESTERLY SIDE OF THE 2" BOLT.
 (FOUND 1 1/2" IRON PIPE AT THE WEST FACE OF THE 3" BOLT PER RECORD [02]-[04]).
 (3" BOLT ON THE EAST EDGE OF THE 1 1/4" PIPE PER RECORD [05]).
 (1 1/2" PIPE ON WEST EDGE OF BOLT FOR WITNESS PER RECORD [07]).
 (1 1/2" IRON PIPE PER RECORD [08]).
 (FOUND 1 1/2" PIPE WITH HEXAGONAL SHAFT IN THE INSIDE PER RECORD [09]).
 (FOUND 1 1/2" IRON PIPE BESIDE BOLT PER RECORD [12]).
 (FOUND 3" OCTAGONAL SHAPED BOLT WITH A 1 1/2" IRON PIPE ALONGSIDE PER RECORD [15]).
3. FOUND 1" SQUARE IRON ROD 1" BELOW GROUND LEVEL S00°00'00"E, 64.03 FEET, BASIS OF BEARING FOR THIS RESTORATION.
 (5/8" SQUARE ROD SOUTH, 64.5 FEET PER RECORD [08]).
 (FOUND 3/4" SQUARE IRON ROD 64 FEET SOUTH OF CORNER PER RECORD [11]).
4. FOUND 30" ROTTEN D. FIR STUMP WITH VISIBLE SCRIBING N25°15'30"W, 73.22 FEET TO CENTER.
 (MARKED FIR 30" N28°W, 73.4 FEET PER RECORD [12]).
 (32" FIR STUMP N28°W, 73.4 FEET SCRIBING VISIBLE PER RECORD [15]).
5. FOUND 15" DOUBLE D. FIR WITH HEALED FACE N34°21'09"E, 94.85 FEET TO CENTER. SET ALUMINUM NAIL AND PLASTIC WASHER IN NW BASE FOR DISTANCE MEASUREMENT.
 (MARKED 8" FIR N33°E, 95.0 FEET PER RECORD [12]).
 (14" FIR WITH HEALED FACE N33°E, 95.0 FEET PER RECORD [15]).
6. FOUND 28" ALDER WITH VISIBLE BARK SCRIBING S00°56'44"E, 52.43 FEET TO CENTER. SET ALUMINUM NAIL AND PLASTIC WASHER IN EASTERLY BASE FOR DISTANCE MEASUREMENT.
 (MARKED 30" ALDER S01°E, 52.70 FEET PER RECORD [12]).
 (32" ALDER BARK SCRIBING VISIBLE S01°E, 52.7 FEET PER RECORD [15]).
7. FOUND 17" DOUBLE MAPLE WITH HEALED FACE S41°44'48"W, 65.30 FEET TO CENTER. SET ALUMINUM NAIL AND PLASTIC WASHER IN SE BASE FOR DISTANCE MEASUREMENT.
 (MARKED 12" MAPLE S39°W, 65.0 FEET PER RECORD [12]).
 (20" MAPLE WITH HEALED FACE S39°W, 65.0 FEET PER RECORD [15]).

MONUMENT SET (PROCEDURES AND DESCRIPTION):

FOUND NO RECORD OF WHO SET THE 2" X 19" BOLT AND 1 1/2" X 33" IRON PIPE FOR CORNER POSITION. BOLT FITS WELL WITH GLO CREEK CALLS TO THE EAST AND SOUTH. FOUND NO EVIDENCE OF GLO BEARING TREES OR COUNTY SURVEYOR'S ACCESSORY (SW CORNER OF HOUSE). HELD THE 2" X 19" BOLT FOR TRUE CORNER POSITION. REMOVED BOLT AND IRON PIPE AND SET A 2" X 31 1/2" GALVANIZED IRON PIPE WITH A 3 1/4" BRASS DISK CONCRETED IN THE TOP, 6" BELOW GROUND LEVEL, MARKED AS SHOWN ON PAGE 2 OF 2. BURIED THE BOLT AND IRON PIPE ON THE EASTERLY SIDE OF THE NEW MONUMENT IN THE HORIZONTAL POSITION 12" DEEP. SET A 6 FOOT ORANGE CARSONITE "SURVEY MARKER " POST 0.5 FEET NORTH OF NEW MONUMENT.

FIR, HARDWOODS AND BRUSH

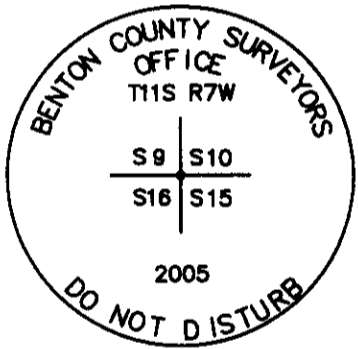
15" DOUBLE D. FIR WITH HEALED FACE. SET ALUMINUM NAIL AND PLASTIC WASHER IN N.W. BASE.



FIR, HARDWOODS AND BRUSH

FIR, HARDWOODS AND BRUSH

MONUMENT DETAIL



3 1/4" BRASS DISK

LEGEND

- SET 5/8" X 30" REBAR WITH YELLOW PLASTIC CAP MKD "BENTON COUNTY SURVEYOR"
- FOUND MONUMENT AS NOTED
- C.S. COUNTY SURVEY
- (C) MEASUREMENT TO CENTER
- ⊙ GOVERNMENT MONUMENT FOUND AS SHOWN
- ⊙ BEARING TREE AS NOTED
- E.G. EDGE OF GRAVEL
- C.R. COUNTY ROAD
- E.C. EDGE OF CREEK

NEW ACCESSORIES:

1. SET REBAR (SEE LEGEND) 14" BELOW GROUND LEVEL N62°50'41"E, 49.74 FEET.
2. SET REBAR (SEE LEGEND) 13" BELOW GROUND LEVEL N63°28'24"W 65.07 FEET.

NOTES:

COMPASS DECLINATION IS 20° EAST. ALL MEASURED DISTANCES AND BEARINGS ARE TO THE CENTER OF THE OBJECT, UNLESS OTHERWISE NOTED. ALL BEARING TREES ARE PAINTED AND HAVE A B.T. TAG ATTACHED, FACING THE CORNER UNLESS OTHERWISE NOTED. ALL NEW BEARING TREES HAVE A PLASTIC WASHER (STAMPED "BENTON COUNTY SURVEYOR CORNER RESTORATION") ATTACHED (BY ALUMINUM NAIL) TO THE FACE, BELOW THE "BT" FOR DISTANCE AND ANGLE MEASUREMENT UNLESS OTHERWISE NOTED. THE DRAWING IS FROM AUTOCAD RELEASE 2002.

THIS RESTORATION WAS PERFORMED AT THE DIRECTION AND APPROVAL OF THE BENTON COUNTY SURVEYOR. *[Signature]*

REGISTERED PROFESSIONAL LAND SURVEYOR

7/13/05 *David M. Dean*

OREGON
JULY 13, 1984
DAVID M. DEAN
2090

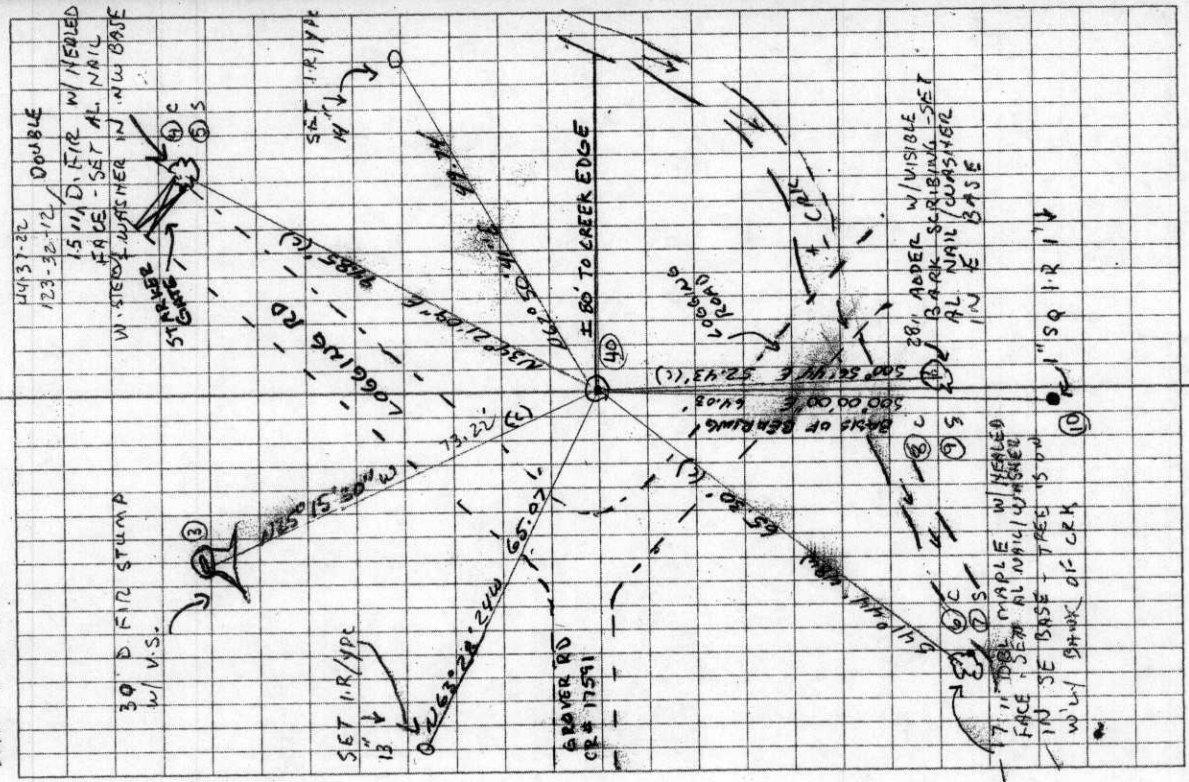
FIRM/AGENCY: BENTON COUNTY SURVEYOR'S OFFICE
ADDRESS: 360 S.W. AVERY AVE. CORVALLIS OR 97333; PH. 766-6821
PRESENT: DAVID M. DEAN, P.L.S. AND ADAM CASALEGNO, SURVEY TECH.
EQUIPMENT: LEICA TCR 1105 WITH TDS ON BOARD

RENEWAL DATE: 12/31/05

WYI MINN
62°E
LEICA TCR 105

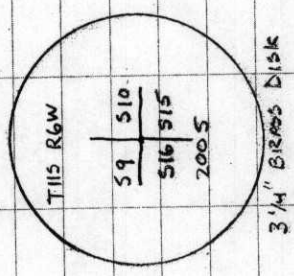
D'DEAN
A CASA LEGNO

2/33



117 400 500
REMONUMENTING
T 115 R 7W

Fd 2" x 19" BOLT w/ HEX HEAD 8" BELOW
GROUND LEVEL FOR COR POSITION, Fd 1 1/2"
x 33 IRON PIPE ON W'LY SIDE OF 2"
BOLT w/ 1/2" x 12" SQ SPICE INSIDE.
Fd 4 B.T.S PER JIM PETERSON REST.
3330 (3 STANDING 1 STUMP) Fd 1" 50
ROD (64 S) PER S.S. 3733
REMOVED BOLT & I.P. AND SET 2" x 3 1/2"
G.I.P. w/ 3 1/4" BRASS CONC. IN TOP
6" BELOW GROUND LEVEL MILD AS
SHOWN. BURIED BOLT & I.P. ON E'LY
SIDE OF NEW MON. IN HORIZ POSITION
& 12" ↓ SET 6' ORANGE CARSONITE
"SURVEY MARKER" POST 0 5' N OF NEW
MONUMENT



35° 57' 33"

- C.S. 79
by W.C. Galloway
Apr. 1940
N.W. Corner of Jacob Hatter D.L.C. 73 7 10 S. R. 4 W.
Set a 7/8" Steel rod proportional distance on sec. line at north fence
for corner and a 1" steel rod at south road fence S. 0° 20' E. .53
- C.S. #136
by F.M. Wilkes
J. Slater and
Elmer Maxfield
Apr. 30, 1913
C.S. # 199
Burt Wilkes
R.W. McBride
R. Underwood
(Recording Only)
N.E. Corner of Alfred Wilham Cl. 55 T. 11 S. R. 5 W.
Set a 1/2" Iron rod
Oak 29° S. 73° W. 88 chs. Std.
" 15° N. 66° E. .63 " "
" 18° N. 15 1/2° W. .59 " "
Cor. Secs 9, 10, 15 & 16 T. 11 S., R. 7 W. March 20, 1941
Found 1 1/2" iron pipe at West face of large Bolt with 5" out. Head - Used Bolts.
None of original Trees standing.
Monument is in Dear Yard S.W. of S.W. corner of House
- W.C. Galloway
Cs. 336
Sept. 19, 1938
S.W. Corner John W. Starr D.L.C. No. 54 - T. 14 S. R. 6 W.
Set 1 1/4" Galv. Pipe for corner from which
A Fir .50" in dia bears N 87° W. 45 Lks.
" " 50" " " N. 50° E. 16 " Burned out - Down
Mark " Maple 20" " " S. 56° E. 16.8 " Nail on N. side
- Burt Wilkes
C.S. 336
Witness
Ray W. McBride
Cor. Secs. 30 & 31 - of 6 W and 25 & 36 T. 14 S. R. 7 W. Mar 10, 1941
Set 1/2" x 30" Galv. Pipe in original stake hole
All three fir B.T.s standing - Cedar in sec. 31 cut about 8' high
- Same as
above.
1/4 sec. Cor. Secs. 31 & 36, T. 14 S. R. 6 & 7 W. Mar 10, 1941
Set 1/2" x 30" Galv. Pipe, from which
A Fir 12 (New 21) bears S. 37° E. 138.6' = 21 links Std.
Mark Fir 28" " N. 30° W. 18.2' = 27.6 "
" " Stamp 36" " N. 37° E. 25.08' = 38.0 "
- 1/4 sec. Cor.
Ralph M. Bryde
Bob Underwood
1/4 sec. Cor. Secs. 25 & 30 - T. 14 S. R. 6 & 7 W. April 24, 1941
Set 1/2" x 30" Galv. Pipes Original Hole.
Both B.T.s. standing & agree - S.W. Tree dead.
Mark Hemlock 16" in dia. Bears S. 78 1/2° W. 58.9' H.C. shape = 56.47' = 85.6 links
- B. Wilkes
Witness
Geo Baer
Bob Underwood
1/4 sec. cor. between Secs. 25 and 36 - 14-7
Set Stone 5" x 12" x 30" + on top. W.C. on N. face } This Cor. was established on
Cedar 30" in dia. Bears S. 78 1/2° E. 70.1' = 1.062 } proportional dist. and 40.0's. of
FIR 10" " " " S. 12 3/4° E. 47.3' = .716 } true line between sec. cors.
True point comes in Alsea River.
- SECE B.W.
Bob Underwood
Ray McBride
Ralph McBryde
Cor. to Secs. 25, 26, 35 & 36. 14-7 April 19, 1941
Set Stone 3" x 9" x 15" Marked + on top C.S. on face Orig Hole.
Cedar. (Alder in 1st hole) 10" (14") S. 54° E. 104.6' Std. = 158.5'
Fir 40 (49" ins in dia bears N. 61 1/2° E. 38.3' No. M.S. .500'
Mark Fir 7 1/2" in dia. bears S. 88 1/2° W. 123.3' 1.868
" Cedar 34" " " N. 2° 15' W. 93.46' - 8° 51' pc L = 91.06' = 138.7'

Corner sections 9, 10, 15 and 16, Twp. 11 s., R. 7 W.

1022

March 20, 1941

Reestablishment by W. C. Galloway

Found $1\frac{1}{2}$ " iron pipe at west face of large bolt with 3" Oct. head, used bolt as corner, none of original trees standing, monument is in yard S. W. of S. W. corner of house.

Ed. 1 1/2" I. Pipe & 2 1/2" hex. shaft by Thomas J. Owens - January 1963 C.S. 3733

S.W. Cor house N60°E (Mag bearing)

5/8" square rod West " "

5/8" " " South in fence " "

14.5 Ft.
144 "
64.5 "

1200

BENTON COUNTY SURVEYORS OFFICE - CORNER RESTORATION

03123

T. 11 S, R. 7 W, W. B. & M., BENTON COUNTY, OREGON

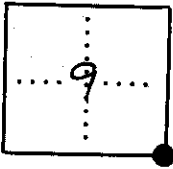
SECTION 9

REPORTED BY JOHN HOWELL

TITLE L.S. 1901

DATE 1-25-1983

The information shown hereon was taken from
the referenced county survey. Date: ^{CPL} 7/5/90



● OFFICIAL CORNER FOUND

○ CORNER SET

EC CORNER COMMON TO SEC. 9, 10, 15, & 16
3" HEX NUT AS PER GALLOWAY
DESCRIBE

ADDITIONAL INFORMATION

C.S. 172

SEE C.S. 7491

OVER

LEGIBLE MARKS ON BEARING OBJECTS

KIND

SIZE

BEARING

DISTANCE

BT TAG POSTED

BENTON COUNTY SURVEYORS OFFICE - CORNER RESTORATION

3330

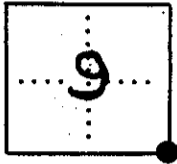
T. 11 S. R. 7 W. W. B. & M., BENTON COUNTY, OREGON

SECTION 9

REPORTED BY Jim S. Peterson

TITLE Land Surveyor (1084)

DATE 11/20/84



● OFFICIAL CORNER FOUND

○ CORNER SET

117400580

LEGIBLE MARKS ON BEARING OBJECTS

Sec. CORNER COMMON TO SEC. 9 10 15 & 16
is 3" octagonal bolt

DESCRIBE

ADDITIONAL INFORMATION

Found 1 1/2" iron pipe beside bolt. Bolt is 16" long and was laid down. Reset bolt in original hole and drove 6" below surface. Pipe is on West edge of bolt. Also found 3/4" square iron rod 64 feet South of corner as per C.S. 3733. This bolt is as per Galloway Hard Board No. 11-7-1.

BT'S SET
→

	T11S R7W S10 BT	T11S R7W S15 BT	T11S R7W S16 BT	T11S R7W S9 BT
KIND	FIR	ALDER	MAPLE	FIR
SIZE	8"	30"	12"	30"
BEARING	N33E	S01E	S39W	N28W
DISTANCE	952 FT	522 FT	65 FT	732 FT
BT TAG POSTED	YES	YES	YES	YES

REGISTERED
PROFESSIONAL
LAND SURVEYOR

OREGON
JULY 31, 1978
JIM S. PETERSON
1084