

CORNER FILE TRACKING

H:\Survey\Corners\Misc\Filetrac.doc

11/23/98

CORNER NUMBER
117400600

STEP	HISTORY()	RESTORATION()
Form Prepared, DB	5/31/05	6/17/05
Field Inspection, DB	6/12/05	6/12/05
Form Checked, DB	7/1/05	7/1/05
Form Edited, DB	7/2/05	7/2/05
Form Signed, DB	7/6/05	7/6/05
Counter Index	6/17/05	6/17/05
GIS Index	6/20/05	6/20/05
Authorize Payment, DB	—————	—————
Archive Digital Files	7/7/05	7/7/05
Collect Documents	6/15/05	6/15/05
Scanned	7/8/05	7/8/05
Copy For Filming	7/7/05	7/7/05
Filed, DB		
Finish index (count unit)	6/12/05	6/12/05
Filmed (Archived), DB		

(DB) = Entry needed in database (Access).

COMMENTS:

BENTON COUNTY CORNER RESTORATION FORM, PAGE 2 OF 2, 147400600R1
SEE CORNER HISTORY FORM FOR RECORDS ETC.

CORNER RESTORATION FIELD BOOK NUMBER 23 PAGE(S) 31 DATE 06/12/2005
TOWNSHIP 11 SOUTH, RANGE 7 WEST, WILLAMETTE MERIDIAN; SECTION 3 CORNER SOUTHWEST
DONATION LAND CLAIM NONE CORNER N/A
CONDITION REPORT ; REFERENCED OUT ; RENEWED XX; SURVEYED IN

LOCATION AND COMMENTS:

CORNER IS LOCATED ON A NORTH FACING SLOPE IN D. FIR TIMBERED AREA. TO REACH CORNER FROM THE JUNCTION OF SUMMIT AND DEVITT ROADS, TRAVEL EASTERLY ON DEVITT ROAD FOR 0.98 MILES TO END OF DEVITT ROAD AND STARKER FOREST GATE; THEN THROUGH GATE ON GRAVEL LOGGING ROAD FOR 0.33 MILES; THEN LEFT (WESTERLY) ON GRAVEL SPUR FOR 0.07 MILES AND PARK; THEN WALK SOUTH, 90 FEET TO CORNER. CORNER IS POOR FOR PREMARKING AND GPS CONTROL.

MONUMENTS AND ACCESSORIES FOUND (CONDITION AND SOURCE):

1. FOUND 1/2" IRON PIPE 3" ABOVE GROUND LEVEL FOR CORNER POSITION.
(SET POST COR. SECS 3, 4, 9. AND 10 PER RECORD [01]).
(SET IRON PIPE FROM 4 STUMPS OF GLO BEARING TREES PER RECORD [02]).
(REMOVED IRON PIPE AS SET PER RECORD [02] AND SET 1/2" GALVANIZED IRON PIPE FROM STUMPS OF 4 GLO BEARING TREES PER RECORD [03]).
(SET 1/2" GALVANIZED IRON PIPE PER RECORD [04]).
(FOUND 1/2" PIPE PER RECORDS [05] AND [06]).
(FOUND 1/2" BENT IRON PIPE, STRAIGHTENED AND RESET PER RECORD [07]).
2. FOUND 40"± D. FIR STUMP WHICH WE OPENED TO VISIBLE SCRIBING "BT", S89°01'W, 46.53 FEET TO ORIGINAL FACE. SET ALUMINUM NAIL AND PLASTIC WASHER IN FACE BELOW SCRIBING FOR ANGLE AND DISTANCE MEASUREMENT
(30" FIR, S78°W, 48.84 FEET PER RECORD [01]).
(30" ROTTEN FIR STUMP, S78°W, 48.84 FEET PER RECORD [03] AND [04]).
(40" FIR STUMP, S78°W, 48.84 FEET PER RECORD [07]).
3. FOUND 43" BURNT D. FIR STUMP, S58°36'E, 167.96 FEET TO CENTER, NO MARKS FOUND.
(36" FIR, S57°E, 167.64 FEET PER RECORD [01]).
(36" FIR, S57°E, 167.64 FEET PER RECORDS [03] AND [04]).
(44" FIR STUMP, S57°E, 167.64 FEET WITH VISIBLE AXE WORK PER RECORD [07]).
4. FOUND 36" ROTTEN D. FIR STUMP WITH VISIBLE BARK SCRIBING "BT", S55°18'W, 30.39 FEET TO CENTER.
(26" D. FIR, S45°W, 11.09 FEET PER RECORD [02]. BEARING AND DISTANCE FROM ERRONEOUSLY SET IRON PIPE)
(26" FIR, S55 1/2°W, 30.95 FEET MARKED "BT" IN BARK PER RECORDS [03] AND [04]).
(28" FIR STUMP S55 1/2°W, 30.95 FEET WITH BARK SCRIBING VISIBLE PER RECORD [07]).
5. FOUND 20"± ROTTEN REMAINS OF D. FIR STUMP, N7°46'E, 25.79 FEET TO CENTER.
(8" FIR, N7 1/2°E, 25.81 FEET PER RECORDS [03] AND [04]).
(18" FIR STUMP N7 1/2°E, 25.81 FEET PER RECORD [07]).

MONUMENT SET (PROCEDURES AND DESCRIPTION):

RECORD [03] REJECTED MONUMENT SET BY RECORD [02] AND SET NEW CORNER MONUMENT USING ALL FOUR GLO BEARING TREES. IT IS UNCLEAR THE EXACT METHOD RECORD [03] USED TO ESTABLISH THE CORNER POSITION, BUT APPEARS TO BE SOME MANNER OF DISTANCE INTERSECTION.

USING THE REMAINING TWO GLO STUMPS AND A DISTANCE/DISTANCE INTERSECTION WOULD PLACE THE CORNER 4 1/2 FEET NORTHEAST OF THE 1/2" PIPE. RECORD BEARING AND DISTANCE FROM THE RECOVERED SCRIBING ON THE SOUTHWEST GLO BEARING TREE WOULD PLACE THE CORNER 9 1/2 FEET NORTHEAST OF THE 1/2" PIPE.

AS THE REMAINING TWO GLO BEARING TREES (NORTHWEST AND NORTHEAST) ARE NOW MISSING DUE TO ROAD CONSTRUCTION, WE COULD NOT SUBSTANTIATE OR REFUTE RECORD [03] PLACEMENT OF THE SUBJECT CORNER. WE HAVE DETERMINED TO HOLD THE POSITION OF THE 1/2" PIPE SET PER RECORD [03] AS A GOOD FAITH EFFORT TO PERPETUATE THE ORIGINAL CORNER POSITION.

LOWERED THE 1/2" PIPE TO 3" BELOW GROUND LEVEL AND SET A 2" X 31 1/2" GALVANIZED IRON PIPE OVER SAID 1/2" PIPE WITH A 3 1/4" BRASS DISK CONCRETED IN THE TOP, 2" ABOVE GROUND LEVEL AND MARKED AS SHOWN ON PAGE 2 OF 2. SET 6 FOOT ORANGE CARSONITE "SURVEY MARKER" POST 0.5 FEET SOUTH OF NEW CORNER MONUMENT.

DATE 05/31/2005

TOWNSHIP 11 SOUTH, RANGE 7 WEST, WILLAMETTE MERIDIAN; SECTION 03 CORNER S. W. _____
 DONATION LAND CLAIM NONE CORNER N/A _____

COMMON CORNER(S):

N W SECTION 10
 N E SECTION 9
 S E SECTION 4

RECORDS (INFORMATION IN BOLD ITALICS IS COUNTY STAFFS' INTERPRETATION OF THE RECORD)

BASED ON EXTENSIVE RESEARCH AND RECOVERY OF EVIDENCE, THIS OFFICE HAS DETERMINED THAT MOST GENERAL LAND OFFICE SURVEYORS MEASURED TO THE FACE OF BEARING TREES.

- [01] GENERAL LAND OFFICE (GLO) NOTES BY DENNIS HATHORN D. S., DATED MAY 14, 1855. SET POST FOR SECTIONS 3, 4, 9, 10, FROM WHICH A FIR 50" DIA. BEARS N5°E, 137 LKS (90.42 FEET), A FIR 15" DIA. BEARS N36°W, 154 LKS (101.64 FEET). A FIR 30" DIA. BEARS S78°W, 74 LKS (48.84 FEET), A FIR 36" DIA. BEARS S57°E, 254 LKS (167.64 FEET).
- [02] COUNTY SURVEY NO. 9401 BY RALPH G. BARNES P.L.S., DATED NOVEMBER 13, 1951. CORNER TO SEC. 3, 4, 9, 10; FOUND WHAT I BELIEVE TO BE THE TRUE CORNER, BEARINGS AND DISTANCES CHECKED, STUMPS OF FOUR TREES, BADLY ROTTEN, NO MARKS FOUND, SET IRON PIPE. 26" DIA. FIR S45°W, 0.168 (11.09 FEET) 30" FIR N45°W, 0.255 CHS (16.83 FEET).
- [03] CORRESPONDENCE LETTER FROM STARKER FOREST BY BRUCE STARKER P.L.S., DATED NOVEMBER 29, 1954. REMOVED PIPE AS SET PER COUNTY SURVEY NO. 9401 AND FOUND TRUE CORNER TO BE N60°E, 20 FEET, SET 1/2" GALVANIZED IRON PIPE FROM WHICH A FIR 30" DIA. BEARS N5°E, 1.37 CHS (90.42 FEET) ROTTEN STUMP; FIR 15" DIA. BEARS N30°W, 1.54 CHS (101.64 FEET) ROTTEN STUMP; FIR 30" DIA. BEARS S78°W, 0.74 CHS (48.84 FEET) ROTTEN STUMP; FIR 36" DIA. BEARS S57°E, 2.54 CHS (167.64 FEET), PITCHY STUMP SCRIBES PLAIN I MARKED WITH BARK SCRIBE; FIR 26" DIA. BEARS S55 1/2°W, 0.469 CHS (30.95 FEET) MARKED "BT"; FIR 8" DIA. BEARS N07 1/2°E, 0.391 CHAINS SCRIBED "310s3BT".
- [04] COUNTY RESTORATION NO. 981 BY BRUCE STARKER P.L.S., DATED NOVEMBER 29, 1954. THIS IS TRANSCRIBED FROM RECORD NO. [03] AND MAY CONTAIN ERRORS AND/OR OMISSIONS.
- [05] COUNTY SURVEY NO. 2768 BY MARTIN L. BEYERLEIN P.L.S., DATED APRIL 16, 1956. S. E. CORNER OF SEC. 4 FOUND 1/2" IRON PIPE AND BT'S PER C. S. RECORDS.
- [06] COUNTY SURVEY NO. 5226 BY BERT W UDELL P.L.S., DATED AUGUST 27, 1971. FOUND 1/2" PIPE.
- [07] SURVEY BY JIM PETERSON P.L.S. (IN PROCESS OF REVIEW AND RECORDING), DATED MAY 17, 2005. FOUND 1/2" IRON PIPE PER BCCR 981 BENT, STRAIGHTENED AND RESET, BT'S FOUND:
 28" FIR STUMP S55 1/2°W, 0.4696 CHS (30.95 FEET) BARK SCRIBING VISIBLE
 18" FIR STUMP N07 1/2°E, 0.391 CHS (25.81 FEET) NO MARKS VISIBLE
 36" FIR STUMP N30°W, 1.54 CHS (101.64 FEET) NO MARKS VISIBLE
 44" FIR STUMP S57°E, 2.54 CHS (167.64 FEET) AXE WORK VISIBLE
 40" FIR STUMP S78°W, 0.74 CHS (48.84 FEET) NO MARKS VISIBLE

NOTES:

THIS IS A MICROSOFT WORD 2000 DOCUMENT NAMED "17400600" CREATED FROM A BOILER PLATE DOCUMENT NAMED "HISTORY", WHICH HAS A STYLESHEET NAMED "CORNER" ATTACHED TO IT.

FIRM/AGENCY: BENTON COUNTY SURVEYOR'S OFFICE
ADDRESS: 360 S.W. AVERY AVE. CORVALLIS OR 97333; PH. 766-6821
RESEARCH BY: DAVID M. DEAN, P.L.S.
DATA ENTRY BY: ADAM CASALEGNO, SURVEY TECH

D. FIR TIMBER AND BRUSH

90°± NORTH OF SECTION CORNER

GRAVEL LOGGING ROAD

+ 20" VERY ROTTEN D. FIR STUMP, NO MARKS - STARKER BT

± 40" D. FIR STUMP WITH VISIBLE "BT", SET ALUMINUM NAIL AND WASHER IN FACE.

36" D. FIR STUMP WITH BARK SCRIBE "BT"

18" D. FIR FACE SCRIBED "T11SR7WS29BT"

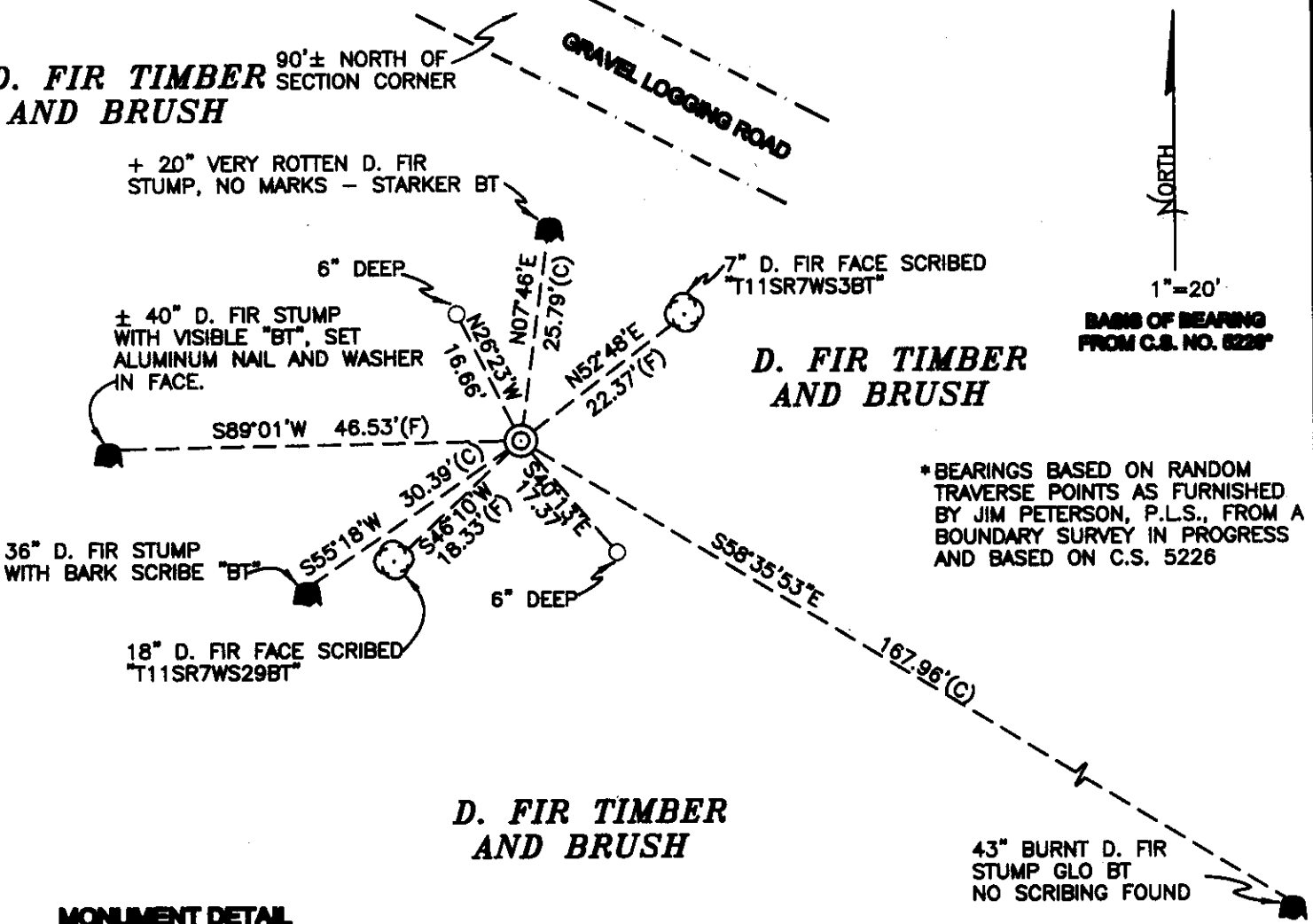
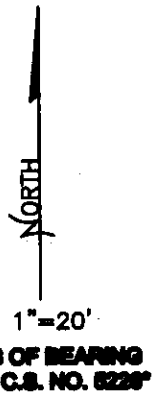
7" D. FIR FACE SCRIBED "T11SR7WS3BT"

D. FIR TIMBER AND BRUSH

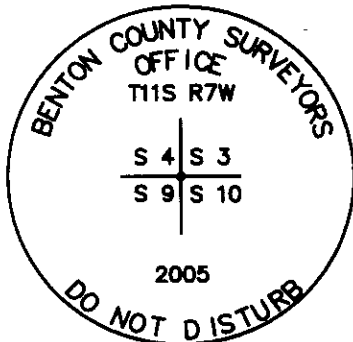
*BEARINGS BASED ON RANDOM TRAVERSE POINTS AS FURNISHED BY JIM PETERSON, P.L.S., FROM A BOUNDARY SURVEY IN PROGRESS AND BASED ON C.S. 5226

D. FIR TIMBER AND BRUSH

43" BURNT D. FIR STUMP GLO BT NO SCRIBING FOUND



MONUMENT DETAIL



3 1/4" BRASS DISK

LEGEND

- SET 5/8" X 30" REBAR WITH YELLOW PLASTIC CAP MKD "BENTON COUNTY SURVEYOR"
- (F) MEASUREMENT TO FACE
- (C) MEASUREMENT TO CENTER
- ⊙ GOVERNMENT MONUMENT SET AS SHOWN
- ⊙ BEARING TREE AS NOTED
- GLO GENERAL LAND OFFICE

NEW ACCESSORIES:

1. SET REBAR (SEE LEGEND) S40°13'E, 17.37 FEET
2. SET REBAR (SEE LEGEND) N26°23'W, 16.66 FEET.
3. 18" D. FIR FACE SCRIBED "T11SR7WS9BT" S46°10'W, 18.33 FEET TO FACE . SET ALUMINUM NAIL AND PLASTIC WASHER IN BOTTOM OF BLAZE FOR DISTANCE AND ANGLE MEASUREMENT.
4. 7" D. FIR FACE SCRIBED "T11SR7WS3BT" N52°48'E, 22.37 FEET TO FACE . SET ALUMINUM NAIL AND PLASTIC WASHER IN BOTTOM OF BLAZE FOR DISTANCE AND ANGLE MEASUREMENT.

NOTES:

COMPASS DECLINATION IS 20° EAST. ALL MEASURED DISTANCES AND BEARINGS ARE TO THE CENTER OF THE OBJECT, UNLESS OTHERWISE NOTED. ALL BEARING TREES ARE PAINTED AND HAVE A B.T. TAG ATTACHED, FACING THE CORNER UNLESS OTHERWISE NOTED. ALL NEW BEARING TREES HAVE A PLASTIC WASHER (STAMPED "BENTON COUNTY SURVEYOR CORNER RESTORATION") ATTACHED (BY ALUMINUM NAIL) TO THE FACE, BELOW THE "BT" FOR DISTANCE AND ANGLE MEASUREMENT UNLESS OTHERWISE NOTED. THE DRAWING IS FROM AUTOCAD RELEASE 2002.

THIS RESTORATION WAS PERFORMED AT THE DIRECTION AND APPROVAL OF THE BENTON COUNTY SURVEYOR. *AW*

FIRM/AGENCY: BENTON COUNTY SURVEYOR'S OFFICE
ADDRESS: 360 S.W. AVERY AVE. CORVALLIS OR 97333; PH. 766-6821
PRESENT: DAVID M. DEAN, P.L.S. AND BERNIE ALTENBACH, SURVEY TECH.
EQUIPMENT: LEICA TCR 1105 WITH TDS ON BOARD

REGISTERED PROFESSIONAL LAND SURVEYOR

7/6/05 *David M. Dean*

OREGON
 JULY 13, 1984
 DAVID M. DEAN
 2090

RENEWAL DATE: 12/31/05

②

Bruce Starker
FORESTER
Corvallis, Oregon

29 November, 1954

Benton County Surveyor
Court House
Corvallis, Oregon

Dear Curt:

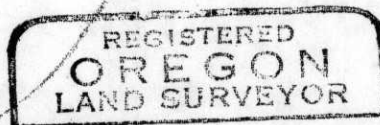
In execution of instructions from surveyor Ralph G. Barnes #263 near in letter which you have seen, I removed his pipe/at corner of sections 3, 4, 9, and 10 in Twp 11 S, R 7 W. as recorded with you in his survey # R-570. I found true corner to be N approx 60° E distant about **20** feet from the former location of this pipe.

At the corner to sections $\frac{4}{9} | \frac{3}{10}$ T 11 S, R 7 W :

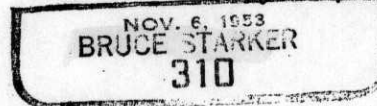
EE COR. REST.
o. 901
JUL 7/16/90.

I set $\frac{1}{2}$ " galvanized iron pipe from which:
 F 30" N 5° E 1.37 chains (rotted stump) (slope distance)
 F 15" N30 $^{\circ}$ W 1.54 chains (rotted stump) (slope distance)
 F 30" S78 $^{\circ}$ W 0.74 chains (rotted stump) (S 88 $\frac{1}{2}$ $^{\circ}$ W)
 F 36" S 57 $^{\circ}$ E 2.54 chains (pitchy stump scribes plain) (S 58 $\frac{1}{2}$ $^{\circ}$ E)
 I marked: (with bark scribe) :
 F 26" S 55 $\frac{1}{2}$ $^{\circ}$ W 0.469 chains "BT" (same tree described by Barnes)
 F 8" N 07 $\frac{1}{2}$ $^{\circ}$ E 0.391 chains "# 310 S 3 BT"

Very truly yours,



Bruce Starker



Corner to sections 3, 4, 9 and 10 in Twp. 11 S., R. 7 W.

981

By Bruce Starker

November 29, 1954

Set $\frac{1}{2}$ " Galvanized iron pipe

Fir 30" N 5° E 1.37 chains rotted stump, slope distance

Fir 15" N 30° W 1.54 chains rotted stump, slope distance

Fir 30" S 78° W 0.74 chains rotted stump S 88 $\frac{1}{2}$ ° W

Fir 36" S 57° E 2.54 chains pitchy stump, scribes plain S 58 $\frac{1}{2}$ ° E

Marked with bark scribe

Fir 26" S 55 $\frac{1}{2}$ ° W 0.469 chains BT same tree described by Barnes

Fir 8" N 07 $\frac{1}{2}$ ° E 0.391 chains #310 S 3 BT.

FOR ADDITIONAL INFORMATION SEE THE THIS RTW FILE IN THE CORNER

RESTORATION CORRESPONDENCE FILE DRAWER CAL 7/11/90.

117400000

North $\frac{1}{4}$ corner of Section 3, Twp. 11 S., R. 7 W.

982

By Bruce Starker

January 21, 1955

Original witness trees:

NW Bearing tree: rotten stump with BT scribed on pitch seam

S Bearing Tree rotten stump

Marked two new bearing trees as follows:

14" Fir S 4° E 31.9 feet, #310 Sec. 34 BT

11" Fir N 60° E 13.3 feet, #310 Sec. 3 B.T.

SEE CORNER FILE NO.

117440700

117400600

RENUMERATING 9/10 T11S R7W

Fd 1/2" I.P. 3" → PER B. STARKER
REST. Fd 40" ± D.FIR STAMP^{SW BT} GLO

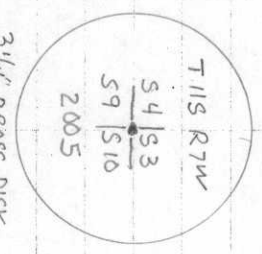
BT WHICH WE OPENED TO U.S. "BT"
AND NOTCH. Fd 43" ROTTEN & BUENED
STAMP W/ AX MARKS - POSSIBLE SE GLO

BT - OPENED w/ SAWS BUT NO MARKS Fd
Fd B. STARKER BT'S. 36" ROTTEN D.FIR
STAMP^{SW BT} w/ VS. (BACK) "BT" & HEALED

UPPER BLAZE PROBABLY BY BARNS.
Fd VERY ROTTEN ± 24" D. FIR STAMP NE
BT - NO MARKS VISIBLE.

1 A DIST/DIST Fm CTR OF SW & SE
GLO BT'S (STAMPS) FALLS WITHIN
1.3 FT OF 1/2" I.P. - HELD I.P.

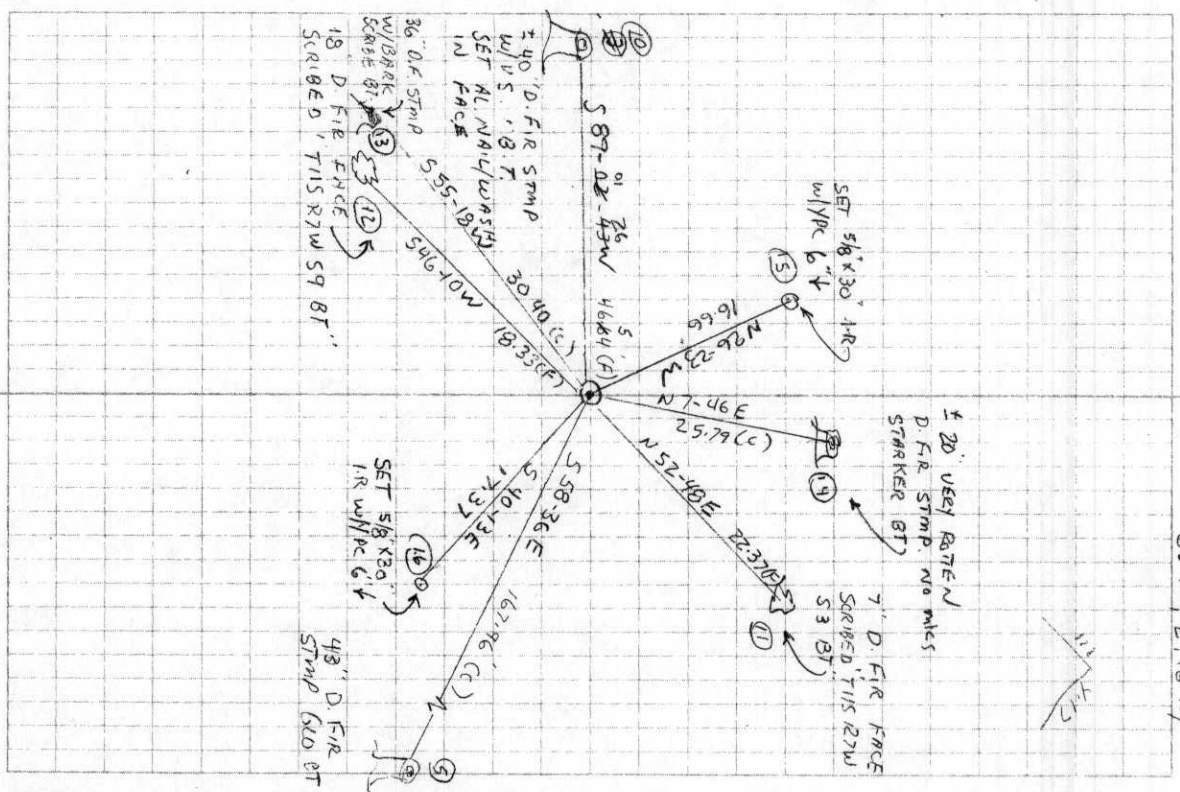
2 FOR TRUE COR. LOWERED TO 3" ↓
& SET 2"x3 1/2" G.I.P. w/ 3 1/4" B.D. COR.
IN TOP 2" ↑ & MKD AS SHOWN. SET
6' SURVEY MARKED POST OS S.



3 1/4" BRASS DISK

LEICA TCR1105
TDS ONBOARD

D DEAN 23/31
B ALTENBACH
CLEAR, MILD
65°F, 29.6" Hg

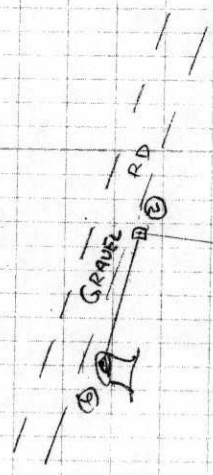
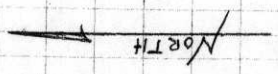


EVIDENCE TIES TO 413
9170 THIS RTW

- 1-2-6 6) FD 38" D. FIR STUMP - NOTED IN PREVIOUS SURVEYS AS POSSIBLE GLO BT. - WE OPEN AND FIND NO SCRIBING
- 1-4-5 5) CTR OF ± 42" D. FIR STUMP (BURNT) POSSIBLE GLO BT - WE OPEN BUT FIND NO SCRIBING - CUT PRE 1950 TREE NOT OLD ENOUGH - NOT A BT
- 2-1-4 4) SET HIT FLUSH w/GR
- 2-1-3 3) ORIG. FACE (VS. "BT") OF SW GLO BT - NOW ± 50" D.F. STUMP WE OPEN TO VS. - TIED FACE
- 2) FD HIT BY J. PETERSON SET ON S EDGE STARKER CUT RD.
- 1) FD 1/2" I.P. 3" ↑ AS SET BY BRUCE STARKER FOR SEC. COR IN 1954

D. DEAN
A. CASALEGNO
LEICA TCR 1081/MS

6/7/05 23/30
CLDY, RAIN
60° F 29.5 M7



* BEARINGS FROM
J. PETERSON RANDOM
TRAV BASED ON
C.S. 5226

