

117440100

CORNER FILE TRACKING

H:\Survey\Corners\Misc\Filetrac2.doc
06/15/2003

CORNER NUMBER
117440100

STEP	HISTORY()	RESTORATION()
Form Prepared, DB	3/28/10	5/12/10
Field Inspection, DB	5/12/10	5/12/10
Finish index (count unit)	5/12/10	5/12/10
Counter Index	5/17/10	5/17/10
GIS Index Form	5/17/10	5/17/10
Checked, DB	5/20/10	5/20/10
Form Edited, DB	5/20/10	5/20/10
Form Signed, DB	5/20/10	5/20/10
Authorize Payment, DB	—	—
Archive Digital Files	5/21/10	5/21/10
Collect Documents	5/21/10	5/21/10
PDH File	5/21/10	5/21/10
Copy For Filming	5/21/10	5/21/10
Scanned (PDF TO JASON)	5/21/10	5/21/10
Filmed (Archived), DB		
Filed, DB		

(DB) = Entry needed in database (Access).

COMMENTS:

DATE 03/26/2010TOWNSHIP 11 SOUTH, RANGE 07 WEST, WILLAMETTE MERIDIAN; SECTION 34 CORNER SOUTH 1/4
DONATION LAND CLAIM N/A CORNER N/A**COMMON CORNER(S):**

NORTH 1/4 OF SECTION 3 T. 12 S., R. 7 W.

RECORDS (INFORMATION IN *BOLD ITALICS* IS COUNTY STAFFS' INTERPRETATION OF THE RECORD)

BASED ON EXTENSIVE RESEARCH AND RECOVERY OF EVIDENCE, THIS OFFICE HAS DETERMINED THAT MOST GENERAL LAND OFFICE SURVEYORS MEASURED TO THE FACE OF BEARING TREES.

- [01] GENERAL LAND OFFICE (GLO) NOTES BY D. HATHORN, D.S., DATED MAY 2, 1855. SET A POST. MARKED A 24" FIR N07°E, 30 LKS. (19.80 FT.) AND A 24" FIR S42°W, 50 LKS. (33.00 FT.).
- [02] COUNTY SURVEY NO. 175 (OLD NO. 73) FIELD NOTES (BOOK 5, PAGE 53) BY W. C. GALLOWAY, NO DATE GIVEN. SET SMALL STONE, STAKE NEAR. FOUND A 24" FIR (GLO BT) N07°E, 0.30 CHS. (19.80 FT.), STANDING. MARKED A 30" FIR S75°02'E, 0.950 CHS. (62.70 FT.).
- [03] CORNER RESTORATION BOOK NO. 1, PAGE 10 BY W. C. GALLOWAY, D.C.S., DATED AUGUST 25, 1910. SET SMALL STONE UNDER STAKE. PART OF STUMP LEFT. FOUND A 24" FIR (GLO BT) N07°E, 0.300 CHS. (19.80 FT.), STANDING. MARKED A 30" FIR S75°E, 0.950 CHS. (62.70 FT.).
- [04] CORNER RESTORATION NO. 1155. TRANSCRIBED FROM RECORD [03] AND MAY CONTAIN ERRORS AND/OR OMISSIONS.
- [05] MAP OF TUMTUM RD. NO. 17490 (OLD NO. 580), NO DATE OR DRAFTSMAN GIVEN. STONE.
- [06] COUNTY SURVEY NO. 1282 (OLD NO. 360) FIELD NOTES (BOOK 69, PAGE 1) BY W. C. GALLOWAY, C.S., DATED JUNE 5, 1936. FOUND 3/4" PIPE. FOUND A 24" FIR (GLO BT) N07°E, 0.30 CHS. (19.80 FT.) AND A 30" FIR (CSBT) S75°02'E, 0.950 CHS. (62.70 FT.).
- [07] BENTON COUNTY MAP NO. 11-7-00015 BY W. C. GALLOWAY, C.S., DATED JUNE 1915. 3/4" PIPE. 24" FIR (GLO BT) N07°E, 0.30 CHS. (19.80 FT.), STANDING. 30" FIR (CSBT) S75°02'E, 0.950 CHS. (62.70 FT.).
- [08] BENTON COUNTY MAP NO. 12-7-00002 BY W. C. GALLOWAY, C.S., DATED JUNE 1936. 3/4" PIPE. 24" FIR STUMP (GLO BT) N07°E, 0.30 CHS. (19.80 FT.). 30" FIR (CSBT) S75°E, 0.950 CHS. (62.70 FT.).
- [09] STARKER MAP DATED DECEMBER 11, 1953 3/4" PIPE.
- [10] STARKER MAP, NO DATE OR DRAFTSMAN GIVEN. 3/4" PIPE. 3" BOILER TUBE TAG. 24" FIR (GLO BT) N07°E, 30 LKS. (19.80 FT.), STANDING. 30" FIR (CSBT) S75°02'E, 95 LKS. (62.70 FT.). 36" FIR SNAG S86°W, 1.95 CHS. @ 39 SLOPE = 1.816 CHS. (119.90 FT.).
- [11] STARKER MAP, NO DATE OR DRAFTSMAN GIVEN. 24" FIR (GLO BT) N07°E, 30 LKS. (19.80 FT.). 24" FIR S42°W, 50 LKS. (33.00 FT.).

NOTES:

THIS IS A MICROSOFT WORD 2003 DOCUMENT NAMED "17440100" CREATED FROM A BOILER PLATE DOCUMENT NAMED "HISTORY", WHICH HAS A STYLESHEET NAMED "CORNER" ATTACHED TO IT.

FIRM/AGENCY: BENTON COUNTY SURVEYOR'S OFFICE
ADDRESS: 360 S.W. AVERY AVE. CORVALLIS OR 97333; PH. 766-6821
RESEARCH BY: BERNARD S. ALTENBACH, ENGINEER/SURVEY TECH.
DATA ENTRY BY: SAME

BENTON COUNTY CORNER RESTORATION FORM, PAGE 1 OF 2, 117440100R2

SEE CORNER HISTORY FORM FOR RECORDS ETC.

CORNER RESTORATION FIELD BOOK NUMBER 28 PAGE(S) 47-50 DATE 05/12/2010
TOWNSHIP 11 SOUTH, RANGE 7 WEST, WILLAMETTE MERIDIAN; SECTION 34 CORNER SOUTH 1/4
DONATION LAND CLAIM NONE CORNER NONE
CONDITION REPORT ; REFERENCED OUT ; RENEWED ; SURVEYED IN XX

LOCATION AND COMMENTS:

CORNER IS LOCATED ON THE EASTERLY EDGE OF A GRAVEL ROAD. TO REACH CORNER FROM THE JUNCTION OF HARRIS AND TUM-TUM ROADS, TRAVEL SOUTHERLY ON TUM-TUM ROAD FOR 1.52 MILES; THEN LEFT ON PRIVATE ACCESS ROAD (PASSING THROUGH LOCKED GATE) FOR 0.16 MILES TO CORNER ON THE EASTERLY SIDE OF ROAD. CORNER IS POOR FOR PREMARKING AND GPS CONTROL.

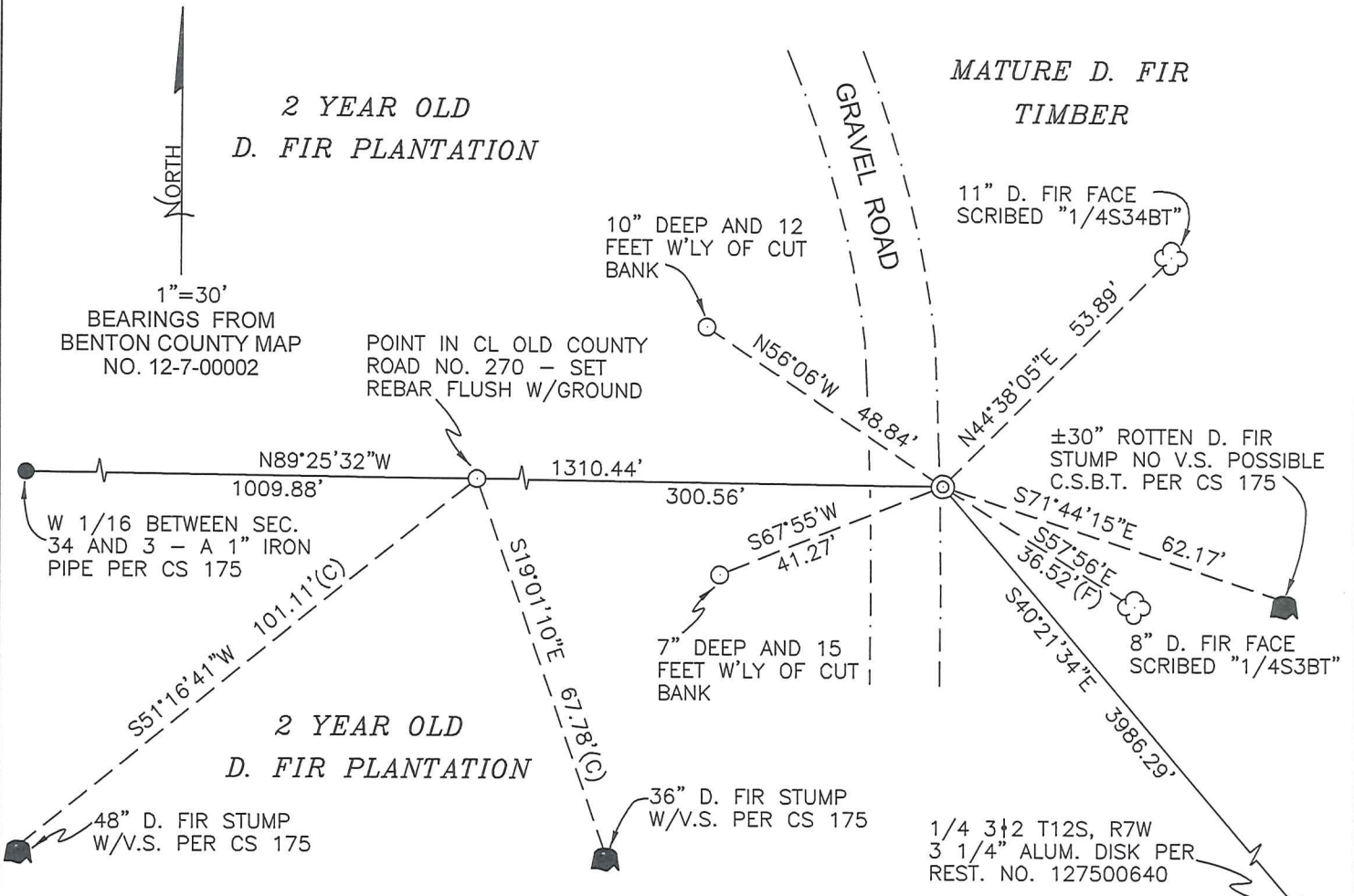
MONUMENTS AND ACCESSORIES FOUND (CONDITION AND SOURCE):

1. FOUND ROTTEN D. FIR STUMP OF UNDETERMINED SIZE, S71°44'E, 62.17 FEET TO CENTER. POSSIBLE COUNTY SURVEY NO. 175 BEARING TREE, HOWEVER NO SCRIBES WERE FOUND ON THIS STUMP.
(30" FIR, S75°02'E, 62.70 FEET PER RECORDS [02], [03], [06] – [08] AND [10]).
2. FOUND 1" IRON PIPE 4" BELOW GROUND LEVEL, N89°25'32"W, 1310.44 FEET. 1/16 CORNER COMMON TO SECTIONS 34 AND 3, T11 & 12S, R7W.
(3/4" PIPE, N89°33'W, 1309.77 FEET PER RECORDS [07] AND [08]).
3. FOUND END OF OLD COUNTY ROAD NO. 270 FROM TWO RECOVERED COUNTY ROAD BEARING TREES, N89°25'32"W, 300.56 FEET. WE PERPETUATED THIS POSITION WITH A REBAR (SEE LEGEND ON PAGE 2 OF 2). SEE ALSO PAGE 2 OF 2 FOR DESCRIPTION OF RECOVERED BEARING TREES.
(SPIKE IN 6" X 6" X 12" STONE, N89°33'W, 300.56 FEET PER RECORD [07]).
(N89°33'W, 300.56 FEET PER RECORD [08]).
4. FOUND 3 1/4" ALUMINUM DISK AT 1/4 CORNER COMMON TO SECTIONS 2 AND 3, S40°21'34"E, 3986.29 FEET PER BENTON COUNTY RESTORATION NO. 127500640.
(S40°28'54"E, 3989.24 FEET [CALCULATED] PER RECORD [08]).

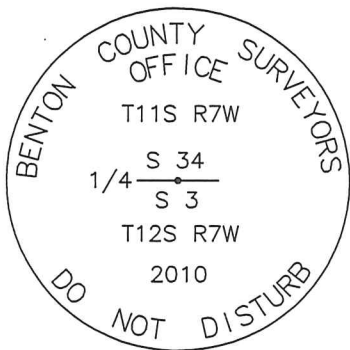
MONUMENT SET (PROCEDURES AND DESCRIPTION):

WE HAVE DETERMINED THIS 1/4 CORNER TO BE OBLITERATED. THE STONE AND 3/4" PIPE OF RECORD WERE DESTROYED BY CONSTRUCTION OF A FOREST ACCESS ROAD. TO POSITION THE SUBJECT CORNER WE RECOVERED A 1" IRON PIPE AT THE WEST 1/16 CORNER COMMON TO SECTIONS 34 AND 3 AND A POINT IN OLD COUNTY ROAD NO. 270 FROM TWO BEARING TREE STUMPS WITH VISIBLE SCRIBING. BOTH OF THESE POINTS WERE EITHER SET OR RECOVERED IN COUNTY SURVEY NO. 175 (RECORD NO. [02]) AND SHOWN ON BENTON COUNTY MAP NO. 11-7-00015 (RECORD NO. [07]). THE POINT IN OLD COUNTY ROAD NO. 270 WAS CALCULATED BY A DISTANCE/DISTANCE INTERSECTION FROM THE CENTER OF THE RECOVERED BEARING TREE STUMPS. WE HELD THE 1/16 CORNER AND THE CALCULATED POSITION FOR THE POINT IN SAID COUNTY NO. 270 FOR LINE AND EXTENDED THIS LINE EASTERLY BY THE RECORD DISTANCE OF 4.554 CHAINS (300.56 FEET) TO ESTABLISH A POSITION FOR THE SUBJECT 1/4 CORNER. FROM OUR CALCULATED POSITION FOR THE SUBJECT CORNER, WE FOUND A ROTTEN D. FIR STUMP OF UNDETERMINED SIZE AND NO VISIBLE MARKS, WHICH COMPARES WELL IN DISTANCE WITH A BEARING TREE ESTABLISHED IN COUNTY SURVEY NO. 175 (RECORD NO. [02]), BUT 3 1/4° DIFFERENCE IN RECORD BEARING. WE HAVE PERPETUATED THE POINT IN OLD COUNTY ROAD NO. 270 WITH A REBAR (SEE LEGEND ON PAGE 2 OF 2).

AT OUR CALCULATED POSITION AS DESCRIBED ABOVE, WE SET A 2" X 31 1/2" GALVANIZED IRON PIPE WITH A 3 1/4" ALUMINUM DISK CONCRETED IN THE TOP, 9" BELOW ROAD SURFACE AND MARKED AS SHOWN ON PAGE 2 OF 2. SET A 6 FOOT ORANGE CARSONITE "SURVEY MARKER" POST 10 FEET EAST OF OUR NEW CORNER MONUMENT.



MONUMENT DETAIL



3 1/4" ALUMINUM DISK

LEGEND

- SET 5/8" X 30" REBAR WITH YELLOW PLASTIC CAP MARKED "BENTON COUNTY SURVEYOR"
- FOUND MONUMENT AS NOTED.
- (F) MEASUREMENT TO FACE
- (C) MEASUREMENT TO CENTER
- ⊙ GOVERNMENT MONUMENT SET AS SHOWN
- ⊙ GOVERNMENT MONUMENT FOUND AS SHOWN
- ☁ BEARING TREE AS NOTED
- C.S.B.T. COUNTY SURVEYORS BEARING TREE
- GLO GENERAL LAND OFFICE
- ☐ BEARING TREE STUMP AS NOTED
- V.S. VISIBLE SCRIBING
- REST. RESTORATION
- ALUM. ALUMINUM.
- CL CENTERLINE

NEW ACCESSORIES:

1. SET REBAR (SEE LEGEND) N56°06'W, 48.84 FEET, 10" BELOW GROUND LEVEL AND 12 FEET WESTERLY OF CUT BANK.
2. SET REBAR (SEE LEGEND) S67°55'W, 41.27 FEET, 7" BELOW GROUND LEVEL AND 15 FEET WESTERLY OF CUT BANK.
3. FACE SCRIBED 11" D. FIR, N44°38'05"E, 53.89 FEET TO FACE AND SCRIBED "1/4S34BT". SET ALUMINUM NAIL AND PLASTIC WASHER BELOW SCRIBING FOR DISTANCE AND ANGLE MEASUREMENT.
4. FACE SCRIBED 8" D. FIR, S57°56'E, 36.52 FEET TO FACE AND SCRIBED "1/4S3BT". SET ALUMINUM NAIL AND PLASTIC WASHER BELOW SCRIBING FOR DISTANCE AND ANGLE MEASUREMENT.

NOTES:

COMPASS DECLINATION IS 20° EAST. ALL MEASURED DISTANCES AND BEARINGS ARE TO THE CENTER OF THE OBJECT, UNLESS OTHERWISE NOTED. ALL BEARING TREES ARE PAINTED AND HAVE A B.T. TAG ATTACHED, FACING THE CORNER UNLESS OTHERWISE NOTED. ALL NEW BEARING TREES HAVE A PLASTIC WASHER (STAMPED "SURVEYOR MARKER DO NOT REMOVE") ATTACHED BY AN ALUMINUM NAIL TO THE FACE, BELOW THE "BT" FOR DISTANCE AND ANGLE MEASUREMENT UNLESS OTHERWISE NOTED. THE DRAWING IS FROM AUTOCAD RELEASE 2008.

THIS RESTORATION WAS PERFORMED AT THE DIRECTION AND APPROVAL OF THE BENTON COUNTY SURVEYOR *Jan Acting*

FIRM/AGENCY: BENTON COUNTY SURVEYOR'S OFFICE
ADDRESS: 360 S.W. AVERY AVE. CORVALLIS, OR. 97333; PH. 766-6821
PRESENT: DAVID M. DEAN, P.L.S. AND RAY WILSON, P.L.S. COUNTY SURVEYOR.
EQUIPMENT: NIKON NIVO 3.C W/TDS ONBOARD

REGISTERED PROFESSIONAL LAND SURVEYOR

5/20/10 *David M. Dean*

OREGON
JULY 13, 1984
DAVID M. DEAN
2090

RENEWAL DATE: 12/31/11

Survey #70
W.C. Galloway

S.W. cor. of Geo. L. Boone D.L.C. 42 Tp. 13-5.
Set stake orig. cor.
Oak 24" in dia. bears S. 28° E. 1.05' std.
" 15" " " " S. 89° W. 3.43' "
Witness J. F. Buchanan July 19, 1910.

Survey
W.C.

#72
W.C. G.

Sec. cor. to sec. 1, 2, 35+36 Tp. 14+15-5
Set 3/4" pipe
On oak 15" in dia. bears S. 75° E. 1.05' std.
" " 5" " " S. 87° W. .36' "

#73
W.C. G.

Witnesses Geo. Birmingham + H. D. Bauman Aug. 5, 1910.
Sec. cor. to sec. 3, 4, 33+34 Tp. 11-7
Set 3/4" pipe orig. cor.
Fir 20" in dia. bears N. 2° 30' E. 1.65' std.
" 40" " " " S. 60° E. 1.04' " (1.58 ginner)
" 22" " " " S. 82° 20' W. .636'
" 24" " " " N. 15° 15' W. 1.375'

Witnesses F. M. Taylor + C. Schoker Aug. 19, 1910.
1/4 sec. cor. between sec. 33+34 Tp. 11-7.

Set 3/4" pipe orig. cor. one stump
Fir 24" in dia. bears S. 56° 53' W. 1.716'
" 12" " " " N. 14° W. 11.40'

Witnesses F. M. Taylor + A. Taylor Aug. 22, 1910.
Sec. cor. to sec. 27, 28, 33+34 Tp. 11-7.

Set 1" pipe orig. cor. snag S.E. std.
Fir 40" in dia. bears N. 68 1/2° E. 4.50' std. (4.90 ginner)
" 14" " " " S. 26° 7' E. .358'
" 36" " " " S. 2° W. 4.07' " (4.42 "
" 20" " " " N. 54° W. 2.35' "

Witnesses F. M. Taylor + A. Taylor Aug. 22, 1910.
1/4 sec. cor. between sec. 27+34 Tp. 11-7.

Set stone orig. cor. found stump print near road.
Oak 18" in dia. bears N. 30° 3' E. 1.166'
Fir 30" " " " S. 89° E. 3.32' std. (3.22 ginner)

Witnesses F. M. + A. Taylor Aug. 23, 1910.
1/4 sec. cor. between sec. 3+34 Tps. 11+12-7.

Set small stone under stake part of stump left.
Fir 30" in dia. bears S. 75° 02' E. .950'
" 24" " " " N. 7° E. .300' std.



#74
W.C. G.

Witnesses F. M. + A. Taylor Aug. 25, 1910.
Sec. cor. to sec. 1, 6, 31+36 or Tp. cor. Tps. 11+12-7+8.
Set stone orig. cor. 4 stumps found
Fir 10" in dia. bears N. 38° 40' E. 1.058'
" 12" " " " S. 44° 10' E. .705' slope measure
" 24" " " " S. 34° 6' W. 1.397'
" 14" " " " N. 5° 35' W. 1.429' " " 3' high above cor.
Witnesses Robert Schaper, W.C. Siefarth + Ivan Taylor Aug. 30, 1910.

W.C.

W.C.

11-7-34 and 12-7-3

$\frac{1}{4}$ -Section Corner between Sections 3 and 34, Twps. 11 and 12-7 1155

Reestablished by W. C. Galloway

August 25, 1910

Set small stone under stake (part of stump left)

Fir 30" in diam bears S. 75° 02' E .950 chains

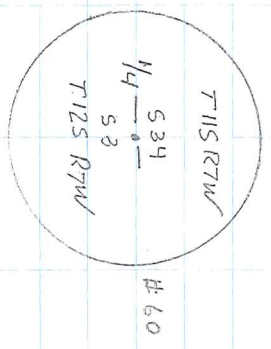
Fir 24" in diam bears N. 7° E .300 chains (standing)

Witnesses F. M. and A. Taylor

117440100

REMOVEMENTS $1\frac{1}{4}$ $\frac{3}{4}$ T1125 RTW

CORNER POSITION FALLS ON SHOULDER OF GRAVEL ROAD. WCG. MAN. DESTROYED BY ROAD BUILDING. NO GLO OR CS BNG TREES. RECOVERED W.C.G. W $1\frac{1}{6}$ $\frac{3}{4}$ AND END OF OLD ROAD AT 270 [BOTH BT STUMPS, W/V.S.] W/DIST/DIST FM CTR OF STUMPS. CALC. COR POSITION BY EXTENSION OF $1\frac{1}{6}$ AND END OF RD 270 BY 4554.01 (300.56 FT). AT CALC COR. SET 2" X 3 1/2" G.I.P. W/3 1/4" ALUM DISK COAL. IN TOP 9" BELOW RD SURFACE AND MKD AS SHOWN. SET 6' ORANGE CARBONITE "SURVEY MARKER" POST 10 FT EAST OF NEW MEASUREMENT.



3 1/4" Alum. Disk

CLD, MILD
55°F, 29.6°Hg
NIKON N110 3.0/7DS

5112/10 28/50
D. DEAN
R. WILSON

