

117440600

CORNER FILE TRACKING

S:\Survey Corners\CORNERS\Templates\Filetrac2.doc
10/04/2010

CORNER NUMBER
117440600

STEP	HISTORY	RESTORATION
Form Prepared, DB	8/20/08	12/31/18
Field Inspection, DB	12/19/18	12/19/18
Finish index (count unit)	8/20/08	12/19/18
Counter Index	12/19/18	12/19/18
GIS Index Form	12/20/18	12/20/18
Checked, DB	1/2/19	1/2/19
Form Edited, DB	1/4/19	1/4/19
Form Signed, DB	1/4/19	1/4/19
Authorize Payment, DB	—	—
Archive Digital Files	1/4/19	1/4/19
Collect Documents	1/4/19	1/4/19
PDF File	1/4/19	1/4/19
Copy For Filming	1/4/19	1/4/19
Scanned (pdf to laserfiche)	1/4/19	1/4/19
Filmed (Archived), DB		
Filed, DB		

(DB) = Entry needed in database (Access).

COMMENTS:

DATE 08/20/2008TOWNSHIP 11 SOUTH, RANGE 07 WEST, WILLAMETTE MERIDIAN; SECTION 03 CORNER SOUTH 1/4
DONATION LAND CLAIM N/A CORNER N/A**COMMON CORNER(S):**

NORTH 1/4 CORNER SECTION 10

RECORDS (INFORMATION IN *BOLD ITALICS* IS COUNTY STAFFS' INTERPRETATION OF THE RECORD)

BASED ON EXTENSIVE RESEARCH AND RECOVERY OF EVIDENCE, THIS OFFICE HAS DETERMINED THAT MOST GENERAL LAND OFFICE SURVEYORS IN BENTON COUNTY MEASURED TO THE FACE OF BEARING TREES.

- [01] GENERAL LAND OFFICE (GLO) NOTES BY DENNIS HATHORN, D.S., DATED MAY 14, 1855. *SET POST FROM WHICH A FIR 15" DIA BEARS S84°E, 430 LINKS (283.80 FEET); FIR 15" DIA BEARS N17°W, 374 LINKS (246.84 FEET).*
- [02] BENTON COUNTY SURVEY NO. 905 (OLD NO. 258) FIELD NOTES (FIELD BOOK 34, PAGE 41) BY WALTER W. LARSEN, D.C.S., NO DATE GIVEN. *SET 3/4" IRON ROD. POST IN POSITION OF ORIGINAL FIR KNOT. FIR 15" DIA (GLO BT) BEARS S84°E, 3.40 CHAINS (224.40 FEET). MARKED FIR 15" DIA BEARS N48°E, 0.804 CHAINS (53.06 FEET).*
- [03] BENTON COUNTY CORNER RESTORATION BOOK NO. 1, PAGE 173 BY WALTER W. LARSEN, D.C.S., DATED AUGUST 8, 1924. *SET A 3/4" ROD BY POST IN PLACE OF ORIGINAL STAKE. FIR 15" DIA (GLO BT) BEARS S84°E, 3.40 CHAINS (224.40 FEET). NORTHWEST GLO BT GONE. FIR 15" DIA (CSBT) BEARS N48°E, 0.804 CHAINS (53.06 FEET).*
- [04] BENTON COUNTY CORNER RESTORATION NO. 980. *TRANSCRIBED FROM RECORD [03] AND MAY CONTAIN ERRORS AND/OR OMISSIONS.*
- [05] BENTON COUNTY MAP NO. 11-7-00005, NO DATE OR DRAFTSMAN GIVEN. *3/4" ROD BY POST. FIR 15" DIA (GLO BT) BEARS S84°E, 3.40 CHAINS (224.40 FEET). FIR 15" DIA (CSBT) BEARS N48°E, 0.804 CHAINS (53.06 FEET).*
- [06] BENTON COUNTY SURVEY NO. 9401 BY RALPH BARNES, P.L.S., DATED NOVEMBER 13, 1951. *SET IP. FIR 36" DIA (CSBT) BEARS N48°E, 0.804 CHAINS (53.06 FEET).*

FIRM/AGENCY: BENTON COUNTY SURVEYOR'S OFFICE**ADDRESS:** 360 S.W. AVERY AVE., CORVALLIS, OR 97333; PH. 541-766-6821**RESEARCH BY:** BERNARD S. ALTENBACH, ENGINEER/SURVEY TECH.**DATA ENTRY BY:** SAME

BENTON COUNTY CORNER RESTORATION FORM, PAGE 1 OF 2, 117440600R2**SEE CORNER HISTORY FORM FOR RECORDS ETC.**

CORNER RESTORATION FIELD BOOK NUMBER 32 PAGE(S) 22 DATE 12/19/2018
TOWNSHIP 11 SOUTH, RANGE 7 WEST, WILLAMETTE MERIDIAN; SECTION 3 CORNER SOUTH 1/4
DONATION LAND CLAIM N/A CORNER N/A
CONDITION REPORT ; REFERENCED OUT ; RENEWED X; SURVEYED IN

LOCATION AND COMMENTS:

CORNER IS LOCATED ON A MODERATE SOUTHWEST FACING SLOPE IN A STAND OF ±65 YEAR OLD D. FIR. TO REACH CORNER FROM THE INTERSECTION OF NORTON CREEK ROAD AND HIGHWAY 20, TRAVEL NORTH ALONG NORTON CREEK ROAD FOR 2.58 MILES TO A TIMBER ACCESS ROAD ON THE LEFT, TURN LEFT AND FOLLOW FOR 0.09 MILES THROUGH A STARKER FORESTS GATE TO A WYE, TURN LEFT FOR 0.57 MILES TO A WYE, STAY RIGHT FOR 0.06 MILES TO A 4 WAY INTERSECTION, TURN LEFT FOR 0.08 MILES TO A WYE, TURN LEFT FOR 0.18 MILES TO A WYE AND PARK. WALK APPROXIMATELY 360 FEET S30°W TO THE CORNER. CORNER IS BAD FOR PREMARKING AND GPS CONTROL.

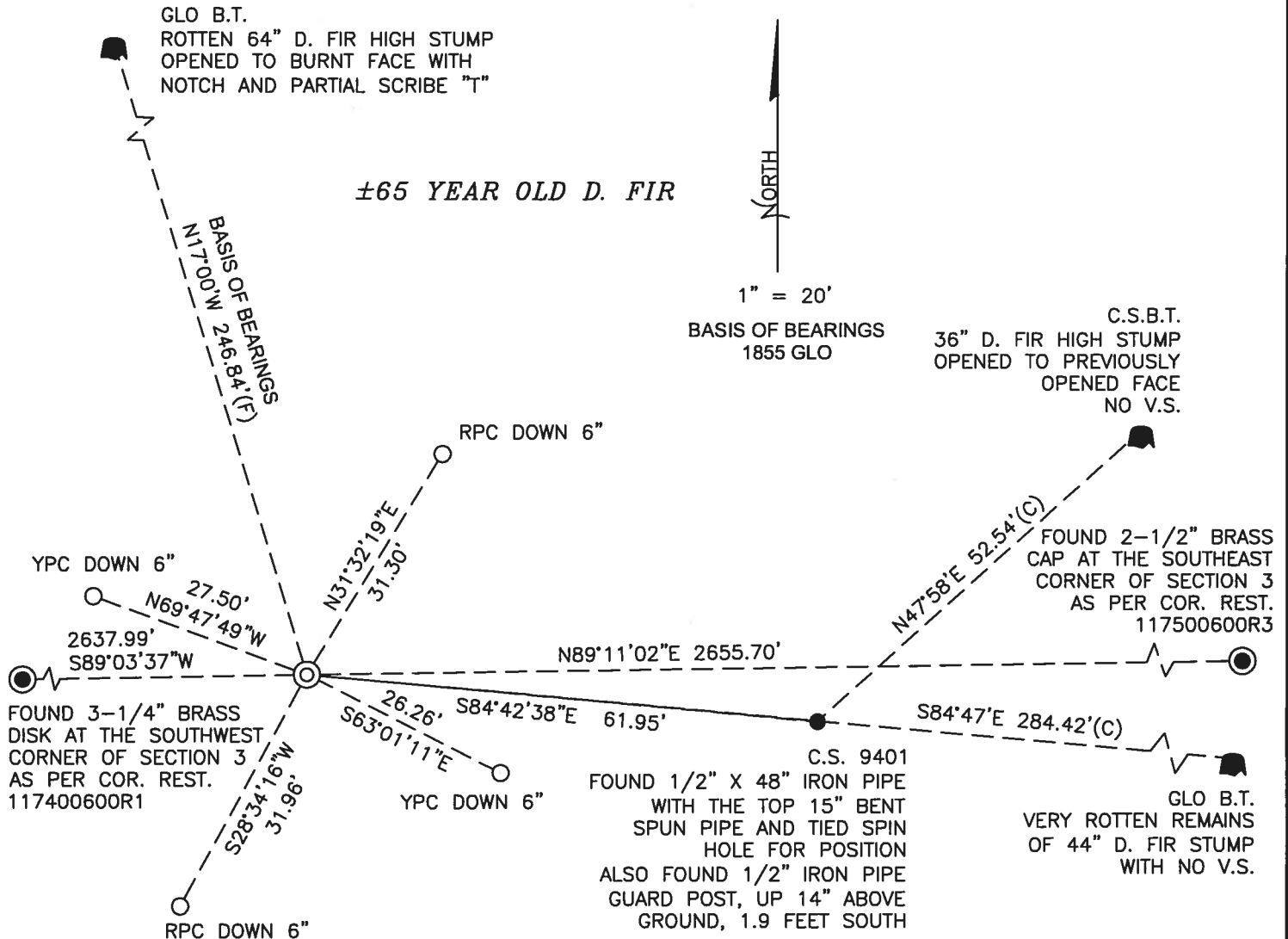
MONUMENTS AND ACCESSORIES FOUND (CONDITION AND SOURCE):

1. FOUND 64" DIA ROTTEN D. FIR HIGH STUMP AND OPENED TO BURNT FACE WITH VISIBLE PARTIAL SCRIBE "T" AND NOTCH, BEARS N17°00'W, 246.84 FEET TO THE FACE. **BASIS OF BEARINGS FOR THIS RESTORATION.**
(FIR 15" DIA BEARS N17°W, 374 LINKS [246.84 FEET] AS PER RECORD [01]).
(NORTHWEST GLO BT GONE AS PER RECORD [03]).
2. FOUND 44" DIA VERY ROTTEN REMAINS OF D. FIR STUMP WITH NO VISIBLE SCRIBING BEARS S84°47'E, 284.42 FEET TO CENTER.
(FIR 15" DIA BEARS S84°E, 430 LINKS [283.80 FEET] AS PER RECORD [01]).
(FIR 15" DIA BEARS S84°E, 3.40 CHAINS [224.40 FEET] AS PER RECORDS [02], [03] AND [05]).
3. FOUND 3-1/4" BRASS DISK AT THE SOUTHWEST CORNER OF SECTION 3 AS PER BENTON COUNTY CORNER RESTORATION 117400600R1 BEARS S89°03'37"W, 2637.99 FEET.
(POST BEARS N89-1/2°W, 40.00 CHAINS [2640.00 FEET] AS PER GENERAL LAND OFFICE NOTES BY DENNIS HATHORN, D.S., DATED MAY 14, 1855).
4. FOUND 2-1/2" BRASS CAP AT THE SOUTHEAST CORNER OF SECTION 3 AS PER BENTON COUNTY CORNER RESTORATION 117500600R3 BEARS N89°11'02"E, 2655.70 FEET.
(POST BEARS S89-1/2°E, 40.00 CHAINS [2640.00 FEET] AS PER GENERAL LAND OFFICE NOTES BY DENNIS HATHORN, D.S., DATED MAY 14, 1855).
5. FOUND 1/2" INNER DIAMETER X 48" LONG IRON PIPE WITH THE TOP 15" BENT. SPUN PIPE AND SPIN HOLE BEARS S84°42'38"E, 61.95 FEET.
(SET 3/4" IRON ROD. POST IN POSITION OF ORIGINAL FIR KNOT AS PER RECORD [02]).
(SET A 3/4" ROD BY POST IN PLACE OF ORIGINAL STAKE AS PER RECORD [03]).
(3/4" ROD BY POST AS PER RECORD [05]).
(SET IP AS PER RECORD [06]).
6. FOUND 36" DIA D. FIR HIGH STUMP AND OPENED TO PREVIOUSLY OPENED FACE WITH NO VISIBLE SCRIBING BEARS N47°58'E, 52.54 FEET TO CENTER MEASURED FROM THE 1/2" IRON PIPE ABOVE.
(MARKED FIR 15" DIA BEARS N48°E, 0.804 CHAINS [53.06 FEET] AS PER RECORD [02]).
(FIR 15" DIA BEARS N48°E, 0.804 CHAINS [53.06 FEET] AS PER RECORDS [03] AND [05]).
(FIR 36" DIA BEARS N48°E, 0.804 CHAINS [53.06 FEET] AS PER RECORD [06]).

MONUMENT SET (PROCEDURES AND DESCRIPTION):

IN 1924 WALTER W. LARSEN, D.C.S., WAS SURVEYING THE EAST HALF OF THE NORTH LINE OF SECTION 10 AND STATED "SET 3/4" IRON ROD POST IN POSITION OF ORIG FIR KNOT" (SEE RECORD [02]). IN THE CORNER RESTORATION NOTES (SEE RECORD [03]) HE "SET A 3/4" ROD BY POST IN PLACE OF ORIGINAL STAKE", AND STATED "NORTHWEST GLO BT GONE". LARSEN'S DISTANCE ALONG THE EAST HALF OF THE NORTH LINE OF SECTION 10 WAS DIFFERENT FROM THE GLO RECORD ALMOST THE SAME DISTANCE THAT HE CALLED THE SOUTHEAST GLO BEARING TREE DIFFERENT FROM THE GLO RECORD. LARSEN ALSO MARKED A NEW NORTHEAST BEARING TREE REFERENCING HIS 3/4" IRON ROD. IN 1951 RALPH BARNES, P.L.S., FOUND LARSEN'S BEARING TREE AND SET A NEW IRON PIPE, BUT IT DOES NOT APPEAR FROM HIS SURVEY (RECORD [06]) THAT HE SURVEYED TO THE POSITION OF THE 1/4 CORNER OR USED IT TO ESTABLISH ANY BOUNDARY LINES. I SEARCHED FOR AND FOUND BOTH 1855 GENERAL LAND OFFICE (GLO) BEARING TREES. THE NORTHWEST GLO BEARING TREE IS A 64" DIA ROTTEN D. FIR HIGH STUMP WHICH I OPENED TO A BURNT FACE WITH VISIBLE PARTIAL SCRIBE "T" AND NOTCH. THE SOUTHEAST GLO BEARING TREE IS A 44" DIA VERY ROTTEN REMAINS OF D. FIR STUMP WITH MOST OF THE CENTER ROTTED AWAY. I CUT INTO THE REMAINS AND FOUND NO VISIBLE SCRIBING. I ALSO FOUND BARNES'S IRON PIPE AND LARSEN'S BEARING TREE. I CALCULATED THE CORNER POSITION BY DISTANCE-DISTANCE INTERSECTION USING THE GLO DISTANCE FROM THE ORIGINAL FACE OF THE NORTHWEST BEARING TREE AND THE GLO DISTANCE ADJUSTED BY THE GLO RADIUS FROM THE CENTER OF THE SOUTHEAST BEARING TREE. I HELD THIS POSITION AS A PERPETUATION OF THE ORIGINAL CORNER POSITION. I DID NOT ACCEPT BARNES'S PERPETUATION OF LARSEN'S POSITION AS I BELIEVE THAT LARSEN WAS INCORRECT IN STATING THAT HE HAD FOUND THE ORIGINAL FIR KNOT, AS EVIDENCED BY HIS DIFFERENCES IN DISTANCE FROM THE GLO RECORD AND HIS NOT FINDING THE ORIGINAL NORTHWEST BEARING TREE.

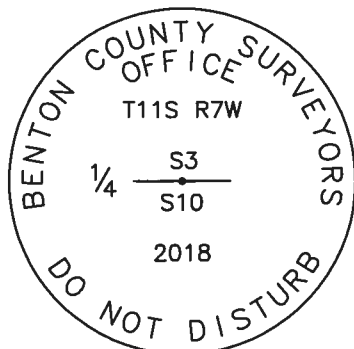
AT THE CALCULATED CORNER POSITION I SET A 2" X 31-1/2" GALVANIZED IRON PIPE WITH A 3-1/4" BRASS DISK CEMENTED IN THE TOP AT GROUND LEVEL AND MARKED AS SHOWN ON PAGE 2 OF 2. THIS POSITION FELL IN A LARGE ROOT DIRECTLY AGAINST THE BASE OF A 37" DIA D. FIR ON THE NORTHWEST SIDE OF THE TREE. TO PLACE THE MONUMENT I CUT OUT A PORTION OF THE ROOT AND THE TREE. SET FOUR NEW IRON ROD ACCESSORIES AS SHOWN ON PAGE 2 OF 2. SET 6 FOOT ORANGE CARSONITE "SURVEY MARKER" POST 2 FEET NORTH OF BRASS DISK.



±65 YEAR OLD D. FIR

LEGEND

MONUMENT DETAIL



3-1/4" BRASS DISK

- SET 5/8" X 30" REBAR WITH PLASTIC CAP
- YPC YELLOW PLASTIC CAP MARKED "BENTON COUNTY SURVEYOR"
- RPC RED PLASTIC CAP MARKED "BENTON COUNTY SURVEYOR"
- FOUND MONUMENT AS NOTED
- (F) MEASUREMENT TO FACE
- (C) MEASUREMENT TO CENTER
- ⊙ GOVERNMENT MONUMENT FOUND AS SHOWN
- ⊙ GOVERNMENT MONUMENT SET AS SHOWN
- V.S. VISIBLE SCRIBING
- C.S. COUNTY SURVEY
- COR. REST. CORNER RESTORATION
- C.S.B.T. COUNTY SURVEYOR'S BEARING TREE
- GLO GENERAL LAND OFFICE
- B.T. BEARING TREE
- BEARING TREE STUMP AS NOTED

NEW ACCESSORIES:

1. SET REBAR (SEE LEGEND) N69°47'49"W, 27.50 FEET AND 6 INCHES BELOW GROUND LEVEL.
2. SET REBAR (SEE LEGEND) S28°34'16"W, 31.96 FEET AND 6 INCHES BELOW GROUND LEVEL.
3. SET REBAR (SEE LEGEND) S63°01'11"E, 26.26 FEET AND 6 INCHES BELOW GROUND LEVEL.
4. SET REBAR (SEE LEGEND) N31°32'19"E, 31.30 FEET AND 6 INCHES BELOW GROUND LEVEL.

NOTES:

COMPASS DECLINATION IS 15° EAST. ALL MEASURED DISTANCES AND BEARINGS ARE TO THE CENTER OF THE OBJECT, UNLESS OTHERWISE NOTED.

THIS RESTORATION WAS PERFORMED AT THE DIRECTION AND APPROVAL OF THE BENTON COUNTY SURVEYOR *gem*

REGISTERED PROFESSIONAL LAND SURVEYOR

FIRM/AGENCY: BENTON COUNTY SURVEYOR'S OFFICE
 ADDRESS: 360 S.W. AVERY AVE., CORVALLIS, OR 97333; PH. 541-766-6821
 PRESENT: DAVID L. MALONE, P.L.S., AND BERNARD ALTENBACH, SURVEY TECH.
 EQUIPMENT: NIKON NIVO3.C WITH SURVEY PRO ONBOARD.

01/04/19 *David L. Malone*

OREGON
 JANUARY 12, 1999
 DAVID L. MALONE
 51523

RENEWAL DATE: 12/31/18

117440600

REMONUMENT T11S R7W 1/4 10

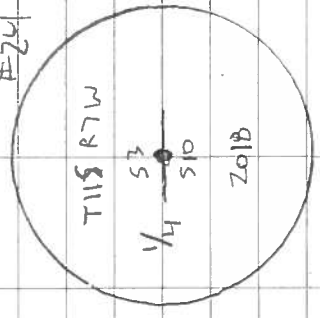
FD NW & SE GLOB. HOLE NW GLOB ST FOR BASIS OF BEARINGS. AT DIST INT. FROM FACE OF NW ST & CENTER OF SE ST SET 2" x 3 1/2" G.I.P. w/ 3-1/4" BRASS DISK CEMENTED IN THE TOP, AT GROUND LEVEL. HAD TO CUT OUT A PORTION OF TABLE AT BASE OF 37" D. FIR TO SET MONUMENT. BRASS DISK IS ON NW SIDE OF D. FIR. FD 1/2" x 48" IRON PIPE TOP IS HUNT, AS PER CS9401. ALSO FD COST NE OF DP, THE PIPE WAS SET FROM THE COST, THE COST CORNER POSITION WAS ESTABLISHED INDETERMINATELY. THERE IS A 1/2" IRON PIPE GUARD POST UP 14" ABOVE GROUND, SOUTH 1.9' SET FOUR NEW IRON ROD ACCESSORIES. SET 6' ORANGE CARSONITE "SURVEY MARKER" POST 2' NORTH OF BRASS DISK.

DR = 5/16" x 30" IRON ROD

YPC OR RPC = YELLOW OR RED

PLASTIC CAP MARKED

"BENTON COUNTY SURVEYOR"



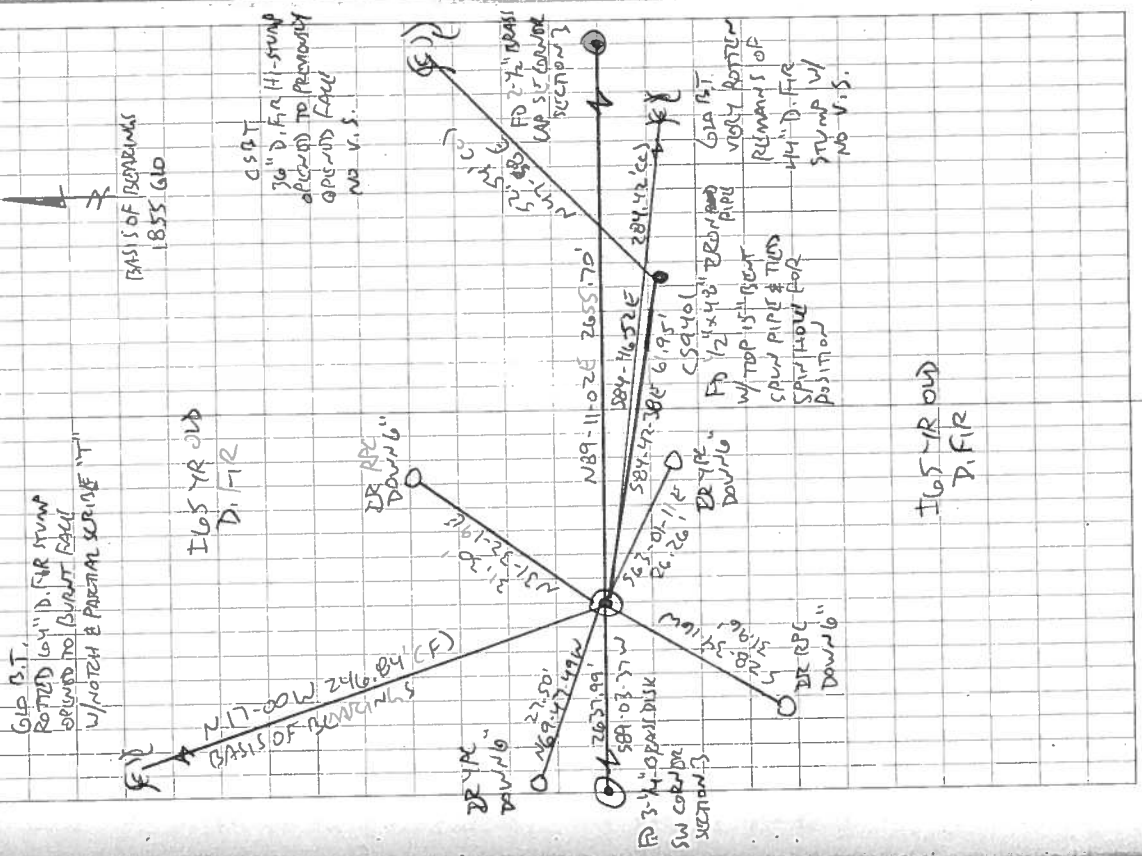
3-1/4" BRASS DISK

COLTS, OVERCAST

12/19/18

D. M. HONE

MILTON NIVOS, C SURVEY PRO SURVIVOR B. ALLEN BRACH



32/22

W.W. Larsen
M.S. Woodcock
Savage.
Mack

N.W. Cor. F. A. Horning Cl. 53 T. 11 S. R. 5 W
Set stone from which a $\frac{3}{4}$ " pipe
bears south .303 chains.

W.W.L.
Howard. Parke.

$\frac{1}{4}$ cor. betw. sec's. 2 + 3 T. 11 S. R. 4 W
Stone 8"x8"x18" on fence line.
Oak 1 $\frac{1}{2}$ " in diameter bears N80°W. 1.135 chains
" post 12" " " south .030 "

C.S. 333

11

$\frac{1}{4}$ sec. cor. betw. sec's. 2 + 11 T. 11 S. R. 4 W.
Set $\frac{1}{2}$ " pipe for witness 3.068 North + .51 West
of true corner.
Fir 36" N. 75° W. 68
Maple 8" N 15° W .22

R. 4 W

$\frac{1}{4}$ cor. between sec's. 1 + 2 T. 11 S. R. 4 W.
in cherry orchard - nothing set but falls
East 40.00 chains and South .604 chains
from a 1" pipe near the center of sec. 2.
and is also south 40.024 from a $\frac{3}{4}$ " pipe
at N.E. corner thereof.

not orig. for.

T. 11 S

C.S. 204

June 7, 1924
Howard Bush
Bud. Aleorn
Doc. + By Frantz

N.E. cor. sec. 20 ^{July 21 2014} T. 10 S R. 6 W.
Set $\frac{1}{2}$ " iron rod + plate
Oak 12" 574° W. 2.612 chains.
" 12" in dia. bears N. 19 $\frac{1}{2}$ ° W. 3.488 chains

C.S. 334
July 29, 1924
W.W.L.
H.L. Mack
Byron Taylor.

S. W. Corner of Pally Belknap Cl. 39 T. 14 S. R. 6 W.
Set $\frac{3}{4}$ " pipe
Ash 18" in dia bears S 46 $\frac{1}{2}$ ° E .658 chs. dis.
Fence west .430 " "

C.S. 335
Aug. 8, 1924
W.W.L.
Langelle

N.E. Cor. Sec. 10, T. 11 S. R. 7 W
Set Fir limb from which a
Fir 12" in dia. bears S 78° W. .68 chs
all standing " 12" " " " N 84° W. .44 "
" 12" " " " " N 15° E. 1.15 "
" 15" " " " " S. 32° E. 1.20 "

$\frac{1}{4}$ cor. between Secs 3 + 10 T. 11 S. R. 7 W.
Set $\frac{3}{4}$ " rod by post in place of orig
state from which
a Fir 15" in dia bears N. 48° E. .804 chs.
" " " " " N 17° W gone
" " " " " S 84° E (4.30) 3.40



Sept 18, 1924
W.W.L.
H. Hubbard
Pete Whitaker

N.W. Cor. Wiley Winkle Cl. 48 T. 13 S R. 5 W
Set horse shoe + parts of orig stone
N.E. Cor Cl. 50 bears south 9.739 chs.

$\frac{1}{4}$ -Corner between sections 3 and 10, Twp. 11 S., R. 7 W.

980

Reestablishment by W. C. Galloway

August 8, 1924

Set $\frac{3}{4}$ " rod by post in place of original stake

Fir 15" in diam bears N 48° E

Fir 15" in diam bears N 17° W

Fir 15" in diam bears S 84° E

.804 chains

gone

3.40 chains

Witness W. W. Larson