

**117500440**

## CORNER FILE TRACKING

H:\Survey\Corners\Misc\Filetrac2.doc  
06/15/2003

<b>CORNER NUMBER</b>
<b>117500440</b>

STEP	HISTORY()	RESTORATION()
Form Prepared, DB	6/3/08	10/28/10
Field Inspection, DB	10/27/10	10/27/10
Finish index (count unit)	10/27/10	10/27/10
Counter Index	10/27/10	10/27/10
GIS Index Form	10/29/10	10/29/10
Checked, DB	11/01/10	11/01/10
Form Edited, DB	11/01/10	11/01/10
Form Signed, DB	11/01/10	11/01/10
Authorize Payment, DB	—	—
Archive Digital Files	11/02/10	11/02/10
Collect Documents	11/02/10	11/02/10
PDF File	11/02/10	11/02/10
Copy For Filming	11/02/10	11/02/10
Scanned	11/02/10	11/02/10
Filmed (Archived), DB	3/29/11	3/29/11
Filed, DB	3/29/11	3/29/11

(DB) = Entry needed in database (Access).

### COMMENTS:

DATE 06/03/2008TOWNSHIP 11 SOUTH, RANGE 07 WEST, WILLAMETTE MERIDIAN; SECTION 14 CORNER WEST 1/4  
DONATION LAND CLAIM N/A CORNER N/A**COMMON CORNER(S):**

EAST 1/4 OF SECTION 15

**RECORDS (INFORMATION IN *BOLD ITALICS* IS COUNTY STAFFS' INTERPRETATION OF THE RECORD)**

BASED ON EXTENSIVE RESEARCH AND RECOVERY OF EVIDENCE, THIS OFFICE HAS DETERMINED THAT MOST GENERAL LAND OFFICE SURVEYORS MEASURED TO THE FACE OF BEARING TREES.

- [01] GENERAL LAND OFFICE (GLO) NOTES BY D. HATHORN, D.S., DATED MAY 12, 1855. SET A POST. MARKED A 40" FIR S25°E 212 LKS. (139.92 FT.) AND A 40" FIR N01°15'W 984 LKS. (649.44 FT.).
- [02] COUNTY SURVEY NO. 1455 (OLD NO. 265) FIELD NOTES (BOOK 82, PAGE 33) BY W. C. GALLOWAY, C.S., DATED DECEMBER 7, 1939. SET A 3/4"X20" GALV. PIPE. FOUND A 40" FIR S23°40'E (S25°E) 2.12 CHS. (139.92 FT.). A 3" FIR N44°20'E 0.154 CHS. (10.16 FT.), NOT MARKED. MARKED A 4" FIR S63 3/4°E 0.129 CHS. (8.51 FT.) AND A 10" DOGWOOD S25°E 0.352 CHS. (23.23 FT.).
- [03] CORNER RESTORATION BOOK NO. 1, PAGE 227 BY W. C. GALLOWAY, C.S., DATED DECEMBER 7, 1939. SET A 3/4"X20" GALV. PIPE. FOUND A 40" FIR (GLO BT) S25°E 2.12 CHS. (139.92 FT.). A 3" FIR N44°20'E 0.154 CHS. (10.16 FT.), NOT MARKED. MARKED A 4" FIR S63°45'E 0.129 CHS. (8.51 FT.) AND A 10" DOGWOOD S25°E 0.352 CHS. (23.23 FT.).
- [04] CORNER RESTORATION BOOK NO. 1, PAGE 233 BY W. C. GALLOWAY, C.S., DATED DECEMBER 1939. SET A 3/4" PIPE. FOUND A 40" FIR STUMP (GLO BT) S25°E 2.12 CHS. (139.92 FT.). MARKED A 3" FIR N44 1/2°E 0.154 CHS. (10.16 FT.), A 4" FIR S63 3/4°E 0.129 CHS. (8.51 FT.) AND A 10" DOGWOOD S25°E 0.352 CHS. (23.23 FT.).
- [05] CORNER RESTORATION NO. 1046. TRANSCRIBED FROM RECORD [03] AND MAY CONTAIN ERRORS AND/OR OMISSIONS.
- [06] BENTON COUNTY MAP NO. 11-7-00011 BY W. C. GALLOWAY, C.S., DATED DECEMBER 4, 1917. 3/4" PIPE. 40" FIR STUMP (GLO BT) S25°E 2.12 CHS. (139.92 FT.). 3" FIR (CSBT) N44 1/2°E 0.154 CHS. (10.16 FT.). 4" FIR (CSBT) S63 3/4°E 0.129 CHS. (8.51 FT.). 10" DOGWOOD (CSBT) S25°E 0.352 CHS. (23.23 FT.).
- [07] CORNER RESTORATION CORRESPONDENCE FILE FOR 11-7 BY HOWARD TAYLOR, P.E., DATED MARCH 1958. FOUND GALLOWAY'S DECEMBER 1939 CORNER. REESTABLISHED PIPE. HIS 3" AND 4" FIRS ARE ABOUT 12" AND IN GOOD CONDITION. OTHER BT'S DOWN AND ROTTING.
- [08] CORNER RESTORATION NO. 1046. TRANSCRIBED FROM RECORD [07] AND MAY CONTAIN ERRORS AND/OR OMISSIONS.
- [09] CORNER RESTORATION NO. 1903. REFERENCE FOR RECORD [07].
- [10] CORNER RESTORATION NO. 117500440N1 BY MICHAEL BRADETICH, P.L.S., DATED SEPTEMBER 1, 1993. FOUND A 3/4" IRON PIPE. FOUND A 27" FIR (CSBT) N44°E 10.5 FT. TO CENTER, WITH HEALED BLAZE AND A ROTTED FIR STUMP (CSBT) S63°E 8.5 FT. MARKED A 20" HEMLOCK S51°E 38.7 FT. TO FACE, BLAZED AND SCRIBED "1/4S14BT", A 27" FIR S02°W 37.4 FT. TO FACE, BLAZED AND SCRIBED "1/4S14BT" AND A 64" MAPLE CLUMP (4 STUMPS) N85°W 24.0 FT. TO RAILROAD SPIKE IN TOP OF EASTERLY STUMP.
- [11] COUNTY SURVEY NO. 8890 BY JIM PETERSON, P.L.S., DATED OCTOBER 24, 1994. FOUND A 3/4" IRON PIPE IN A CLEARCUT. FOUND A 27" FIR STUMP (CSBT) N44 1/2°E 0.154 CHS. (10.16 FT.), WITH A HEALED FACE, A 20" HEMLOCK STUMP S51°E 38.7 FT., WITH SCRIBING VISIBLE, A 27" FIR STUMP S02°W 37.4 FT., WITH SCRIBING VISIBLE AND A 64" MAPLE CLUMP N85°W 24.0 FT. TO RAILROAD SPIKE.
- [12] COUNTY SURVEY NO. 9277 BY JAMES EDWARDS, P.L.S., DATED MARCH 4, 1998. FOUND A 3/4" IRON PIPE, 2" ABOVE GROUND. ALL BEARING TREES HAVE BEEN CUT. ALL BEARING TREE STUMPS HAVE HEALED BLAZES OR VISIBLE SCRIBING.
- [13] PARTITION PLAT NO. 2007-04 BY JIM PETERSON, P.L.S., DATED JANUARY 19, 2007. FOUND A 3/4" I.P.

**NOTES:**

THIS IS A MICROSOFT WORD 2003 DOCUMENT NAMED "17500440" CREATED FROM A BOILER PLATE DOCUMENT NAMED "HISTORY", WHICH HAS A STYLESHEET NAMED "CORNER" ATTACHED TO IT.

**FIRM/AGENCY:** BENTON COUNTY SURVEYOR'S OFFICE  
**ADDRESS:** 360 S.W. AVERY AVE. CORVALLIS OR 97333; PH. 766-6821  
**RESEARCH BY:** BERNARD S. ALTENBACH, ENGINEER/SURVEY TECH.  
**DATA ENTRY BY:** SAME

**BENTON COUNTY CORNER RESTORATION FORM, PAGE 1 OF 2, 117500440R2**  
**SEE CORNER HISTORY FORM FOR RECORDS ETC.**

CORNER RESTORATION FIELD BOOK NUMBER 29 PAGE(S) 08 DATE 10/27/2010  
TOWNSHIP 11 SOUTH, RANGE 7 WEST, WILLAMETTE MERIDIAN; SECTION 14 CORNER WEST 1/4  
DONATION LAND CLAIM NONE CORNER NONE  
CONDITION REPORT     ; REFERENCED OUT     ; RENEWED XX; SURVEYED IN     

**LOCATION AND COMMENTS:**

CORNER IS LOCATED IN A STAND OF ±20 YEAR OLD D. FIR ON A NORTHERLY FACING SLOPE. TO REACH CORNER FROM THE JUNCTION OF HIGHWAY 20 AND NORTON CREEK ROAD, TRAVEL NORTHERLY ON NORTON CREEK ROAD FOR 1.50 MILES; THEN LEFT ON PRIVATE ACCESS ROAD (PASSING THROUGH LOCKED GATE) FOR 0.05 MILES; THEN RIGHT ON SPUR FOR 0.06 MILES TO END OF ROAD AND PARK; THEN WALK APPROXIMATELY S40°W, ±300 FEET TO CORNER. CORNER IS POOR FOR PREMARKING AND GPS CONTROL.

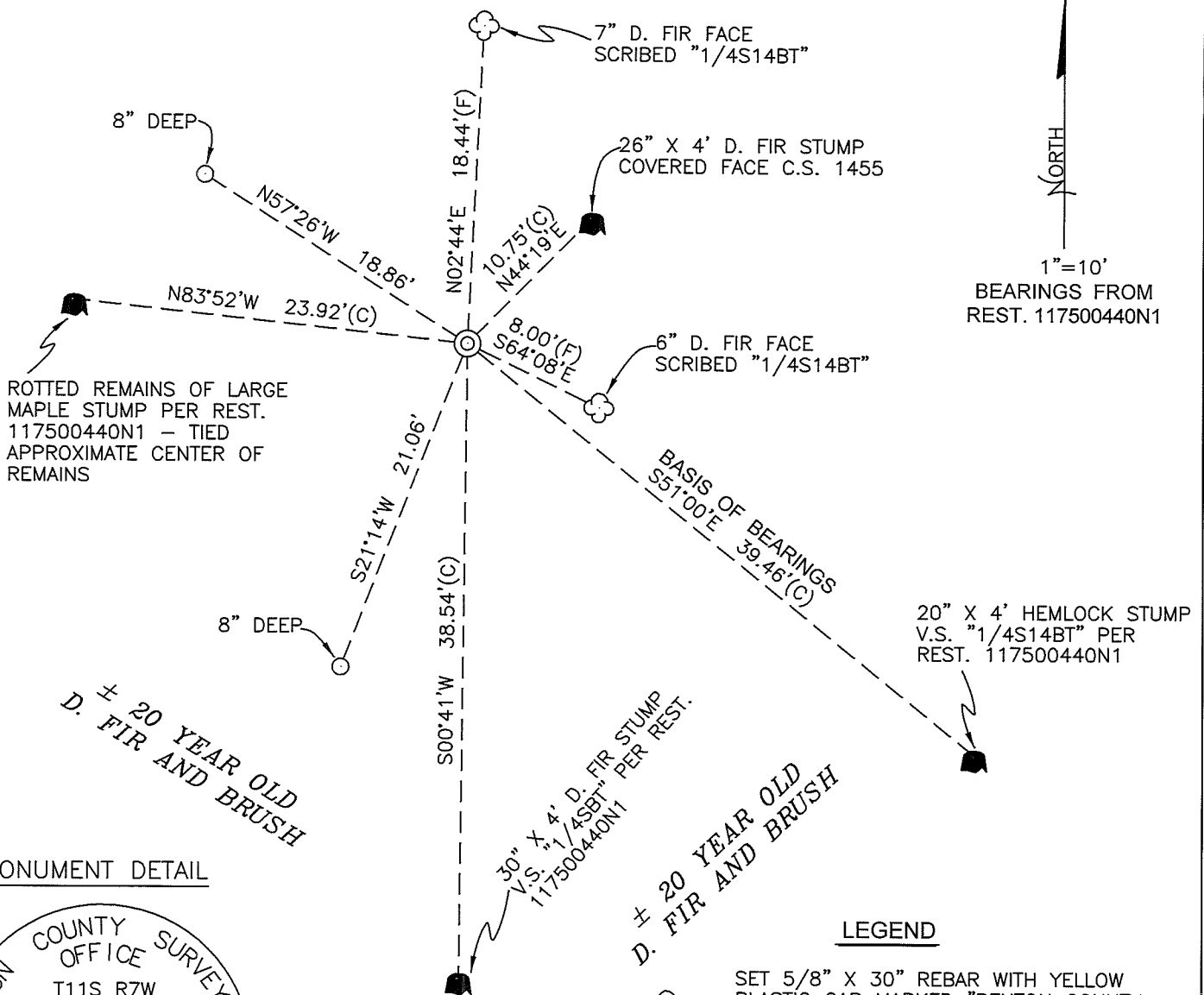
**MONUMENTS AND ACCESSORIES FOUND (CONDITION AND SOURCE):**

1. FOUND 3/4" X 21" GALVANIZED IRON PIPE, 3" ABOVE GROUND LEVEL AND FIRMLY SET FOR CORNER POSITION.  
(SET POST PER RECORD [01]).  
(SET 3/4" X 20" GALV. PIPE PER RECORDS [02] AND [03]).  
(SET 3/4" PIPE PER RECORD [04]).  
(3/4" PIPE PER RECORD [06]).  
(FOUND GALLOWAY'S DECEMBER 1939 CORNER. REESTABLISHED PIPE PER RECORD [07]).  
(FOUND 3/4" IRON PIPE PER RECORDS [10] - [13]).
2. FOUND 24" X 4' HIGH D. FIR STUMP WITH COVERED FACE, N44°19'E, 10.75 FEET TO CENTER. SET TACK IN TOP CENTER FOR DISTANCE AND ANGLE MEASUREMENT.  
(3" FIR, N44°20'E, 10.16 FEET; NOT MARKED PER RECORDS [02] AND [03]).  
(MARKED 3" FIR, N44 1/2°E, 10.16 FEET PER RECORD [04]).  
(FOUND RECORD [02] FIR BEARING TREES ABOUT 12" DIAMETER AND IN GOOD CONDITION PER RECORD [07]).  
(FOUND 27" FIR, N44°E, 10.5 FEET TO CENTER PER RECORD [10]).  
(FOUND 27" FIR STUMP, N44 1/2°E, 10.16 FEET WITH HEALED FACE PER RECORD [11]).  
(ALL BEARING TREES HAVE BEEN CUT AND HAVE HEALED BLAZES OR VISIBLE SCRIBING PER RECORD [12]).
3. FOUND 20" X 4' HIGH HEMLOCK STUMP, S51°00'E, 39.46 FEET TO CENTER WITH VISIBLE SCRIBING "1/4S14BT". SET TACK IN TOP CENTER FOR DISTANCE AND ANGLE MEASUREMENT. **BASIS OF BEARINGS FOR THIS RESTORATION.**  
(MARKED 20" HEMLOCK, S51°E, 38.7 FEET TO FACE, BLAZED AND SCRIBED "1/4S14BT" PER RECORD [10]).  
(FOUND 20" HEMLOCK STUMP, S51°E, 38.7 FEET WITH SCRIBING VISIBLE PER RECORD [11]).  
(ALL BEARING TREES HAVE BEEN CUT AND HAVE HEALED BLAZES OR VISIBLE SCRIBING PER RECORD [12]).
4. FOUND 30" X 4' HIGH D. FIR STUMP, S00°41'W, 38.54 FEET TO CENTER. SET ALUMINUM NAIL AND PLASTIC WASHER IN EASTERLY BASE FOR DISTANCE MEASUREMENT.  
(MARKED A 27" FIR, S02°W, 37.4 FEET TO FACE, BLAZED AND SCRIBED "1/4S14BT" PER RECORD [10]).  
(FOUND 27" FIR STUMP, S02°W, 37.4 FEET WITH SCRIBING VISIBLE PER RECORD [11]).  
(ALL BEARING TREES HAVE BEEN CUT AND HAVE HEALED BLAZES OR VISIBLE SCRIBING PER RECORD [12]).
5. FOUND ROTTED REMAINS OF LARGE MAPLE, N83°52'W, 23.92 FEET TO CENTER OF REMAINS.  
(64" MAPLE CLUMP [4 STUMPS], N85°W, 24.0 FEET TO RAILROAD SPIKE IN TOP OF EASTERLY STUMP PER RECORD [10]).  
(64" MAPLE CLUMP, N85°W, 24.0 FEET TO RAILROAD SPIKE PER RECORD [11]).

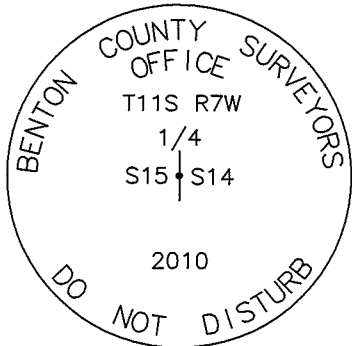
**MONUMENT SET (PROCEDURES AND DESCRIPTION):**

HELD THE 3/4" X 21" GALVANIZED IRON PIPE FOR THE TRUE CORNER POSITION, WHICH COMPARES WELL WITH THE ABOVE ACCESSORIES FOUND. REMOVED IRON PIPE AND SET A 2" X 31 1/2" GALVANIZED IRON PIPE WITH A 3 1/4" BRASS DISK CONCRETED IN THE TOP, 1" BELOW GROUND LEVEL AND MARKED AS SHOWN ON PAGE 2 OF 2. BURIED THE 3/4" X 21" GALVANIZED IRON PIPE ON THE NORTHERLY SIDE OF NEW MONUMENT IN A HORIZONTAL POSITION AND 4" BELOW GROUND LEVEL. SET A 6 FOOT ORANGE CARSONITE "SURVEY MARKER" POST 0.5 FEET SOUTH OF NEW MONUMENT.

±20 YEAR OLD D. FIR AND BRUSH



MONUMENT DETAIL



3 1/4" BRASS DISK

LEGEND

- SET 5/8" X 30" REBAR WITH YELLOW PLASTIC CAP MARKED "BENTON COUNTY SURVEYOR"
- (F) MEASUREMENT TO FACE
- (C) MEASUREMENT TO CENTER
- ⊙ GOVERNMENT MONUMENT SET AS SHOWN
- ☁ BEARING TREE AS NOTED
- C.S.B.T. COUNTY SURVEYORS BEARING TREE
- GLO GENERAL LAND OFFICE
- BEARING TREE STUMP AS NOTED
- V.S. VISIBLE SCRIBING
- REST. RESTORATION

NEW ACCESSORIES:

1. SET REBAR (SEE LEGEND) N57°26'W, 18.86 FEET AND 8" BELOW GROUND LEVEL.
2. SET REBAR (SEE LEGEND) S21°14'W, 21.06 FEET AND 8" BELOW GROUND LEVEL.
3. FACE SCRIBED 7" D. FIR, N2°44'E, 18.44 FEET TO FACE AND MARKED "1/4S14BT". SET ALUMINUM NAIL AND PLASTIC WASHER BELOW SCRIBING FOR DISTANCE AND ANGLE MEASUREMENT.
4. FACE SCRIBED 6" D. FIR, S64°08'E, 8.00 FEET TO FACE AND MARKED "1/4S14BT". SET ALUMINUM NAIL AND PLASTIC WASHER BELOW SCRIBING FOR DISTANCE AND ANGLE MEASUREMENT.

NOTES:

COMPASS DECLINATION IS 20° EAST. ALL MEASURED DISTANCES AND BEARINGS ARE TO THE CENTER OF THE OBJECT, UNLESS OTHERWISE NOTED. ALL BEARING TREES ARE PAINTED AND HAVE A B.T. TAG ATTACHED, FACING THE CORNER UNLESS OTHERWISE NOTED. ALL NEW BEARING TREES HAVE A PLASTIC WASHER (STAMPED "SURVEYOR MARKER DO NOT REMOVE") ATTACHED BY AN ALUMINUM NAIL TO THE FACE, BELOW THE "BT" FOR DISTANCE AND ANGLE MEASUREMENT UNLESS OTHERWISE NOTED. THE DRAWING IS FROM AUTOCAD RELEASE 2010.

THIS RESTORATION WAS PERFORMED AT THE DIRECTION AND APPROVAL OF THE BENTON COUNTY SURVEYOR *[Signature]*

REGISTERED  
PROFESSIONAL  
LAND SURVEYOR

11/1/10 *David M. Dean*

FIRM/AGENCY: BENTON COUNTY SURVEYOR'S OFFICE  
 ADDRESS: 360 S.W. AVERY AVE. CORVALLIS, OR. 97333; PH. 766-6821  
 PRESENT: DAVID M. DEAN, P.L.S. AND DAVE MALONE, P.L.S.  
 EQUIPMENT: NIKON NIVO 3.C WITH SURVEY PRO ONBOARD.

OREGON  
 JULY 13, 1984  
 DAVID M. DEAN  
 2090

RENEWAL DATE: 12/31/11

117500440

REPOINTMENTING 1/4 15/14 THIS R7W

FOUND 3/4" X 2 1/2" G.I.P. 3" ABOVE GROUND

LEVEL AND FIRMLY SET FOR CORNER

POSITION. GLO BT'S MISSING. FD

NE BT PER CS. 1455 - NOW 27" X 4'

D. FIR STUMP COVERED FACE. FD 3 BT'S

PER REST. 117500440. N1 - " HEMLOCK

STUMP W/US "1/4S 14BT" " D. FIR W/US.

"1/4S BT" REMAINS OF MAPLE.

REMOVED 3/4" I.P. SET 2" X 3 1/2" G.I.P

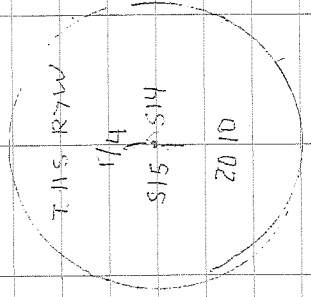
W/ 3/4" BRASS DISK CONC. IN TOP 1" ↓

MKD AS SHOWN. BARIED 3/4" X 2 1/2" G.I.P

ON NLY SIDE NEW MON. 4" ↓, SET

6 FT ORANGE CARBONITE "SURVEY

MARKER" POST 0.5 SOUTH NEW MON.



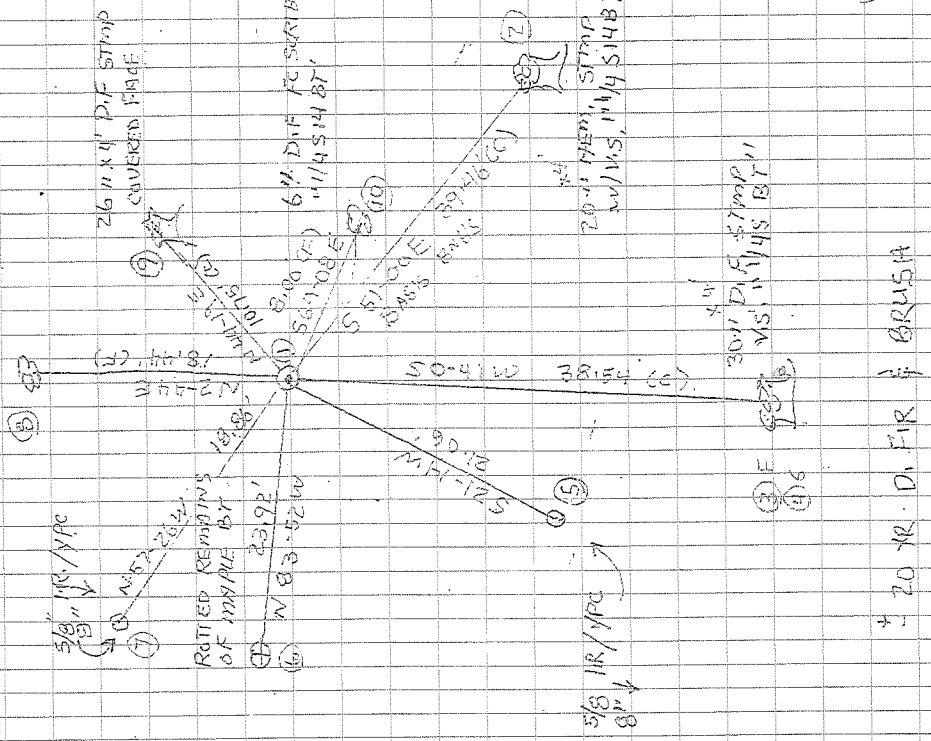
3/4" BRASS DISK

OVERCAST, COOL  
45°F, 29.5" Hg  
NIKON NIVO 3.C./TDS

10/27/10  
D. DEAN  
D. MALONE

± 20 YR D. FIR & BRUSH

7" DIF. FC SCRIB  
w/US, 1/4S 14BT



± 20 YR D. FIR & BRUSH

TOWNSHIP 11 SOUTH, RANGE 7 WEST, WILLAMETTE MERIDIAN; SECTION 14 CORNER W 1/4  
DONATION LAND CLAIM \_\_\_\_\_ CORNER \_\_\_\_\_

**COMMON CORNER(S):**

THE EAST QUARTER CORNER OF SECTION 15.

**UPDATES AND REVISIONS:**

**CORNER RECORDS (PREVIOUS RENEWALS, SURVEYS, ETC.)**

- [01] ORIGINAL GLO SURVEY BY DENNIS HATHORN DATED JULY 7, 1856.
- [02] COUNTY SURVEY NO. 1455 BY W.C. GALLOWAY DATED DECEMBER 7, 1939 (FIELD BOOK NO. 82, PAGE 33).
- [03] OLD CORNER RESTORATION BOOK NO. 1 PAGE 227 BY W.C. GALLOWAY DATED DECEMBER 7, 1939.
- [04] OLD CORNER RESTORATION BOOK NO. 1 PAGE 233 BY W.C. GALLOWAY DATED DECEMBER OF 1939.
- [05] CORNER RESTORATION NO. 1046 BY W.C. GALLOWAY DATED DECEMBER OF 1939.
- [06] MAP NO. 11-7-00011 BY W.C. GALLOWAY DATED DECEMBER OF 1939.
- [07] CORNER RESTORATION NO. 1903 BY HOWARD TAYLOR DATED APRIL 3, 1958.
- [08] CORNER RESTORATION NO. 1046 BY HOWARD TAYLOR DATED MARCH OF 1958.
- [09] CORNER RESTORATION NO. 117500440N1 BY MICHAEL S. BRADETICH DATED SEPTEMBER 1, 1993.

**COMMENTS/LOCATION/ETC:**

RECORD [05] IS A TRANSCRIBED COPY OF RECORD [03] AND [04] AND MAY CONTAIN ERRORS AND OMISSIONS.  
RECORD [08] IS A TRANSCRIBED COPY OF RECORD [07] AND MAY CONTAIN ERRORS AND OMISSIONS.

**NOTES:**

THIS IS A MICROSOFT WORD (VERSION 5.0) DOCUMENT NAMED "17500440" CREATED FROM A BOILER PLATE DOCUMENT NAMED "HISTORY", WHICH HAS A STYLESHEET NAMED "CORNER" ATTACHED TO IT.

**FIRM/AGENCY:** BENTON COUNTY SURVEYOR'S OFFICE  
**ADDRESS:** 360 S.W. AVERY AVE. CORVALLIS OR 97333; PH. 757-6821  
**RESEARCH BY:** CURTIS J. LIESENFELT/MARK E. ANDERSON  
**DATA ENTRY BY:** COLETTE MONACO

OREGON CORNER RESTORATION

Section 14, Township 11 South, Range 7 West, Willamette Meridian

Benton County

September 1, 1993

Corner Designation

15 | 14 | 1/4 Corner

- \_\_\_ Condition Report
- \_\_\_ Not Found
- X Renewed
- \_\_\_ Unrecorded
- \_\_\_ Surveyed In
- \_\_\_ Referenced Out

Previous Renewals/Surveys, etc.

Galloway Survey 11-7-00011

Monument(s) & Accessories Found: (Condition and Source)

Found 3/4" Iron Pipe

Galloway Bearing Trees

- 10" Dogwood, S25°E, .352 chains, missing
- 4" Fir, S63-3/4°E, .129 chains, now rotted stump, S63°E, 8.5 ft.
- 40" Fir, S25°E, 2.12 chains, missing
- 3" Fir, N44-1/2°E, .154 chains, now 27" Fir, N44°E, 9.4 ft. to face, 10.5 ft. to center, with healed blaze. Add Willamette Industries, Inc. corner tag.

Monument Set (Procedures and Description)

None

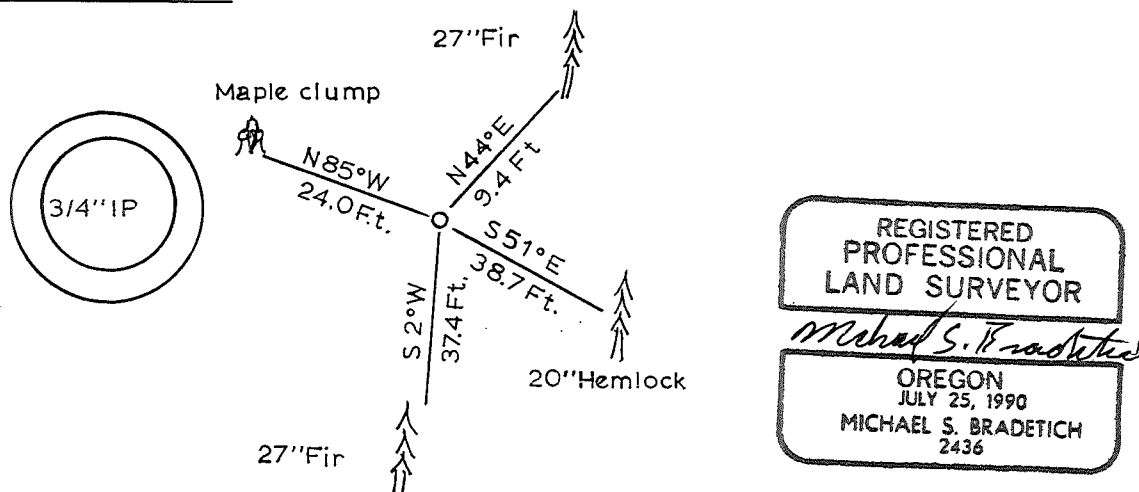
New Accessories

- 64" Maple clump (4 stumps), N85°W, 24.0 ft. to railroad spike in top of easterly stump.
- 27" Fir, S2°W, 37.4 ft. to face, blazed and scribed 1/4 S14BT.
- 20" Hemlock, S51°E, 38.7 ft. to face, blazed and scribed 1/4 S14BT.
- Set white fiberglass post 1.0 ft. west.

Location & Comments

Attach Willamette Industries, Inc. corner tags to new bearing trees. Compass declination 20°E. Drawings not to scale.

Monument Detail



12-31-93

Witnesses

Michael S. Bradetich  
 Russel Bartels  
 Vanessa Stone

MICHAEL S. BRADETICH  
 WILLAMETTE INDUSTRIES, INC.  
 1551 SE LYLE STREET  
 DALLAS, OR 97338



CORNER RESTORATION (BOOK NO. 1)

C.S. 265  
W.C. Galloway  
Adrian Seits  
Dec. 7, 1939

S.W. Corner of James W. Vanderpool D.L.C. No. 45 - T.11 S.R. 7.W.  
Found stone marked Cl. 45 - 115 7W set stone West side (opposite) from  
Set 1" x 1 1/2" x 42" stretcher bar (Team Hitch) for corner from which  
Fir 25" in dia. bears N. 33° 20' E. 25.61' = 0.388 chs. dist. - spike in S.E. face  
Fir 19" " " " N. 57° 30' E. 27.4' = 0.415 " " File N.

Same as above

1/4 sec. cor. between sections 14 & 15 - T.11 S.R. 7.W.  
Set a 3/4" Galv. Pipe 20" long for corner from which  
Fir 40" in dia. bears S. 25° E. 2.12 chs. dist.  
Fir 3" " " " N. 34° 20' E. 0.154 " " not marked  
" 4 " " " S. 63° 45' E. 0.129 " "  
Dogwood 10 " " " S. 25° E. 0.352 " "



C.S. #124  
W.C. Galloway  
Adrian Seits  
May 24, 1940

N.W. Corner of A.G. Hovey D.L.C. No. 43 - T.12 S.R. 5.W.  
Set 3/4" Pipe for corner from which  
An Oak 12" in dia. bears N. 56° W. 0.59 chs. dist. std.  
" " 7" " " S. 54° 20' E. 0.510 " "  
" " 3" " " S. 64° 40' W. 0.708 " "

W.C. Galloway  
Adrian Seits  
C.S. No. 360 cont.  
Jan., 1940

Corner of sections 3, 4, 9 & 10 - T.12 S.R. 7.W.  
Set a 3/4" Galv. pipe for sec. cor. from which  
A Fir 50" in dia. bears N. 45° E. 0.66 chs. dist. std.  
An Alder 8" " " " S. 5° E. 0.98 " " stump  
A Fir 50" " " " S. 75° W. 0.30 " " " 8' high  
A Fir 38" " " " N. 35° W. 0.48 " " std.  
A Cedar 8" " " " S. 80° E. 0.045 " "  
A Fir 16" " " " N. 65° E. 0.045 " "  
A Hemlock 14" " " " N. 25° W. 0.157 " "  
A Cedar 5" " " " S. 28° W. 0.315 " "

Same as above

The 1/4 sec. cor. between sects. 4 & 5 - T.12 S.R. 7.W.  
Set a 1/2" PIPE for 1/4 sec. cor. from which  
A Fir 1" in dia. bears S. 80° 45' E. 0.254 chs. dist. Tree not marked  
An Alder 8" " " " S. 11° E. 0.133 " "  
" Elder 11" " " " N. 65° W. 0.102 " "  
A Fir 5" " " " N. 27° W. 0.373 " "  
Note - This 1/4 sec. cor. set on True Line Proportionally dist. bet. sec. cors.

C.S. 79  
By F.M. Wilkes  
Sept. 16, 1913  
R.M. Conner  
Found in 1940  
by W.C. Galloway  
Adrian Seits  
Referenced to  
Book.

N.E. Corner of Mark Cahoon Cl. 58 T.10 S.R. 4.W.  
1/2" pipe in road  
Stone 24" x 24" x 24" S. 3° W. .270 cen. of top

CORNER RESTORATION BOOK NO. 1

County Survey 207

July 15, 1942 by W.C.G.

Witnesses Victor Plunkert

Corner to Sections 8, 9, 16 and 17 T. 11 S. R. 7 W. of the Will. Mer.

Set 2" galv. pipe from fir 40' S. 50° E. 57' stump

- Marys River North 1.10
- " " West 0.75
- " " South .75
- " " S. bank 1.608

- Marked ash 10" in dia. bears N. 15° 20' W. 1.074
- " Fir 20" " " " S. 46° 28' E. 1.876
- " Vine maple 5 1/2" " " " S. 14° 23' E. .798
- " Ash 10" " " " N. 36° 40' W. 1.077

C.S. #265

Dec. 1939 by W.C.G.

Witnesses Warren Norton and

Walter Norton

1/4 Sec. Cor. bet. Secs. 14 and 15 T. 11-7

Set 1/4" pipe

- Fir 40" in dia. bears S. 25° E. 2.12 stump
- Mkd. " 3" " " " N. 44 1/2° E. .154
- " " 4 " " " " S. 63 3/4° E. .129
- " Dogwood 10" " " " S. 25° E. .352



C.S. 231

Dec. 22, 1941

by W.C. Galloway

Adrian Seils

Walter Fauerso

S.E. corner of Jesse Wood C. 1.75 T. 12-6

5/8" x 36" Iron rod

- Fir 60" in dia. bears N. 10° W. (3.87) 3.854 to spike
- " 15" " " " S. 1° W. 1.71 Stump. (Letters on bark)
- Mkd. " 16" " " " S. 35° W. .176 chs.
- " " 14" " " " N. 35° W. .1.34 "

C.S. #231

Sept. 25, 1943 by

W.C. Galloway C.S.

F.M. Beardsley

Corner to Sections 6, 7, 1 and 12 T. 12 S. Rs. 6 and 7 W.

Set a 1/4" Pipe and mound of stone Set from creek S. 7 W. and stump. 39.939 chains S. 0° 26' E. to 1/4 sec. cor.

- Marked an oak 4" in dia. bears S. 44° 08' E. 6.08 of a chain
- " Fir 11" " " " S. 20° E. .270
- " " 18" " " " S. 79° W. .190
- " Maple 4" " " " N. 55 1/2° W. .374

C.S. 156

by W.C.G.

Dec. 11, 1942

Witnesses

John R. Thompson

Davis

Corner to Secs. 7, 8, 17 and 18 T. 12-7

Set a 3/4" Pipe in hole

- Fir 6" in dia. (now 32") bears S. 17 1/2° E. 1.01 chs. std.
- " 8" " " (" 32") " S. 65° W. .98 " " old face.
- " 16" " " (" 48") " N. 18 1/2° W. 2.10 " " "
- " 8" " " (" 32") " N. 5° 20' E. 1.73 " " center

C.S. #156

Jan. 15, 1943

by W.C.G.

John R. Thompson

Davis

1/4 Sec. Cor. bet. Secs. 7 and 8 T. 12-7

Set 1/2" pipe, N. of cedar log.

- Fir 8" in dia. (now 34") bears S. 86 1/2° E. .64 std.
- " 10" " " (" 36") " N. 5° W. .39 "

1/4-Section corner between sections 14 and 15, Twp. 11 S., R. 7 W.

Reestablishment by W. C. Galloway

December 1939

Set a 5/4" galvanized pipe 20" long for corner

- Fir 40" in diam bears S 25° E 2.12 chains
- Fir 3" in diam bears N 44° 20' E .154 chains
- Fir 4" in diam bears S 63° 45' E .129 chains
- Dogwood 10" in diam bears S 25° E .352 chains

Witness Adrian Seits

-----  
Reestablishment by Howard E. Taylor

March, 1958

Reset pipe

- Fir 3" N 44° 20' E. .154 chains; now 12"
- Fir 4" S 63° 45' E .129 chains; now 12"

Other BT's down and rotting

1903

TIIS RTW SECTION 15 MISCELLANEOUS CORNERS

FOR THE CORNER INFORMATION SEE THE LETTER DATED 4/3/1958 IN THE  
TIIS RTW FILE IN THE CORNER RESTORATION CORRESPONDENCE FILE  
DRAWER (CJL 7/17/90).