

- C.S. #196 cont. $\frac{1}{4}$ Sec cor between secs. 13 & 14 T. 11 S. R. 7 W. C.S. #19
- Set plow share under surface
 Oak 18" bears S. 87°30' E. 14.22 obs. std.
 Ash 8" S. 65°15' W. 4.954
 Witnesses L.H. Howley, John Hiller & John & Vargil Skaggs March 1915
 Edwin Johnson
- " $\frac{1}{4}$ sec. cor. bet. secs. 12 & 13 T. 11 S. R. 7 W.
- Set $\frac{3}{4}$ " pipe orig. cor.
 Fir 12" bears S. 8° W. 1.20 obs. std.
 " 12" " N. 72° W. 1.72 " "
 Witnesses above
- " $\frac{1}{4}$ sec. cor. bet. secs. 13 & 14 T. 11 S. R. 7 W.
- Set $\frac{1}{2}$ " shaft orig. cor.
 Oak 12" bears S. 45° E. 12.92 obs. std.
 " 30" " S. 60° W. 3.09 " "
 Witnesses above
- " $\frac{1}{4}$ sec. cor. between secs. 13 & 18 T. 11 S. R. 6 & 7 W. C.S. Misc
- Set a plow share 12" below surface found hole
 Oak 10" bears N 5° 47' E. 4.059 obs.
 " 10" " N. 45° 45' W. 4.57 " std.
 Witnesses above
- " Sec. cor. to secs. $\frac{11}{14}$ | $\frac{12}{13}$ T. 11 S. R. 7 W.
- Set a plow share hole found SE fir down
 W. Fir 40" bears N 1° E. 2.82 obs. std.
 Maple 8" " N. 61° E. .062 "
 W. Fir 12" " S. 57° W. 3.72 " "
 Tr. " 60° " N 3° W. 1.00 " "
 Witnesses above
- " S.W. cor. Britton Wood Cl. # 37 T. 11 S. R. 7 W.
- Set hack spring R stumps 1 stump-hole
 Fir 16" bears S. 89° 30' E. 1.311 obs.
 Oak 15" " N. 34° W. .124 "
 Witnesses above
- " N.E. cor. of Wth Blodgett Cl. # 40 T. 11 S. R. 7 W.
- Set $\frac{1}{4}$ " x 4" x 20" cast iron
 Oak 10" bears N. 2° 30' E. 1.773 obs.
 Witnesses above
- " Int. cor. of Britton Wood Cl. # 37 T. 11 S. R. 7 W.
- Set $\frac{1}{4}$ " x 4" x 20" cast iron found two small stones
 Oak 10" bears S. 3° 30' E. 1.230 obs.
 Witnesses above
- " S.E. cor. of Jas. W. Vanderpool T. 11 S. R. 7 W.
- Orig. Stone 6" x 11" x 15"
 Oak 9" bears N. 88° 10' W. 2.335 obs.
 " 12" " N. 38° 45' W. 3.146 "
 " 15" " N. 41° ⁽³⁰⁾ 15' W. 4.186 " std.
 Witnesses above
- " C.S. #2
 Put with C.S.

$\frac{1}{4}$ -Section corner between sections 12 and 13, Twp. 11 S R 7 W

1032

Reestablishment by W. C. Galloway

March 1915

Set $\frac{3}{4}$ " pipe, Original corner

Fir 12" in diam bears S 8° W

1.20 chains(standing)

Fir 12" in diam bears N 72° W

1.72 chains(standing)

Witnesses L. H. Hawley, John Hiller, John & Virgil Skaggs, Edwin Johnson

11-7-12

BENTON COUNTY SURVEYORS OFFICE - CORNER RESTORATION

1034

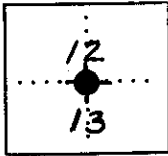
T 11 S, R 7 W, W. B. & M., BENTON COUNTY, OREGON

REPORTED BY Arnold Brubaker

SECTION 13

TITLE R.P.L.S. #992

DATE 12/5/80



● OFFICIAL CORNER FOUND

○ CORNER SET

LEGIBLE MARKS ON BEARING OBJECTS

1/4 CORNER COMMON TO SEC. 12 & 13
IS 2" x 30" Pipe / 2 1/2" Brass Cap
DESCRIBE

ADDITIONAL INFORMATION

Fd. 3/4" Pipe per C.S. #196-Galloway. Set
Brass Cap at distances from E of Origin
BT's and S 54° E 0.5' from bent 3/4" Pipe
Corner is 4.5' S. of E-W fence.

New BT's:

9" D-fir S 23° W 29.35 ft.

"N 1/4 S 13" "BT" / Tag

13" D-fir N 63° W 6.77 ft.

"S 1/4 S 12" "BT" / Tag

	Stump with visible "BT" mark	NE Stump of a double with "B" chopped in bark.	
KIND	<u>D-fir</u>	<u>D-fir</u>	
SIZE	<u>12"</u>	<u>12"</u>	
BEARING	<u>S 9° W</u>	<u>N 72° W</u>	
DISTANCE	<u>79.2'</u>	<u>113.52'</u>	
BT TAG POSTED	<u>No</u>		

OVER

SECTION 12 TOWNSHIP 11 S RANGE 7 W DLC _____ CORNERS 1/4

DATE 7-18-90 CORNER RESTORATION FIELD BOOK NUMBER _____ PAGE _____

CORNER DESIGNATION:

1/4 corner sections 12 & 13,
T11S, R7W

1/4 $\frac{S12}{S13}$

- _____ CONDITION REPORT ONLY
- _____ REFERENCED OUT
- XX RENEWED
- _____ SURVEYED IN

LOCATION AND COMMENTS:

Corner lies 5 ft. South of E-W fence line, 100 ft. North of small creek, and 175 ft. North of dirt road.

PREVIOUS RENEWALS/SURVEYS, ETC.:

- 1856 - Original survey by D. Rathorn
- 1915 - Corner restoration 1032 by W.C. Galloway
- 1980 - Corner restoration 1034 by A. Brubaker
- 1981 - C.S. 7249 by G. Johnson
- 1915 - C.S. 486 by W.C. Galloway

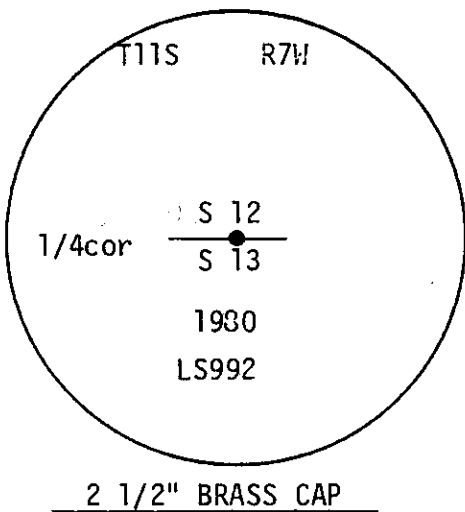
MONUMENTS AND ACCESSORIES FOUND (CONDITION AND SOURCE):

Found 2 1/2" brass cap on 2" iron pipe.

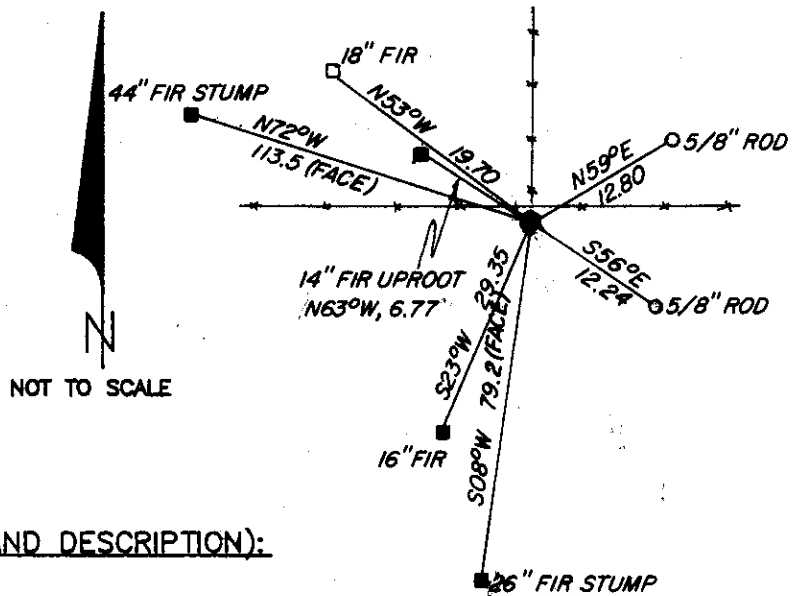
BT's found:

- *1) 16" Fir, S23°W, 29.35 ft. (S23°W, 29.35 ft. - 1980) Healed face - Set BT tag
- 2) 14" Fir Uproot, N63°W, 6.77 ft. (N63°W, 6.77 ft. - 1980) Scribing visible ("BT")
- 3) 44" Fir Stump, N72°W, 113.5 ft. to face (N72°W, 172 Lks - 1856) Healed face - Set BT tag
- 4) 26" Fir Stump, S08°W, 79.2 ft. to face (S08°W, 120 Lks - 1856) No marks visible - Set BT tag

MONUMENT DETAIL



SKETCH



NOT TO SCALE

MONUMENT SET (PROCEDURES AND DESCRIPTION):

NEW ACCESSORIES

BT's set:

- *1) 18" Fir, N53°W, 19.70ft. Scribed "1/4 S 12 BT" - Set BT tag

Set 5/8" X 30" iron rod with plastic cap (LS 1084), N59°E, 12.80ft.

Set 5/8" X 30" iron rod with plastic cap (LS 1084), S56°E, 12.24ft.

Iron rods are set flush with ground.

Set orange fiberglass "Survey Marker" post

NOTES:

except as noted

*Set PK nail with stainless steel washer in side center of base of BT. BT distance is to side center of tree. Accessory bearings are determined using a hand compass (Decl.=20° East) except as noted.

FIRM/AGENCY: J. Peterson & Associates, Land Surveyor's

ADDRESS: 8155 NW Michel Drive

PARTY CHIEF: Corvallis, Oregon 97330 Phone 757-1794

CREW:

WITNESS: Jim S. Peterson - Joe B. Hinds

REGISTERED PROFESSIONAL LAND SURVEYOR

[Signature]

OREGON
JULY 31, 1976
JIM S. PETERSON
1084