

117839020

CORNER FILE TRACKING

H:\Survey\Corners\Misc\Filetrac2.doc
06/15/2003

CORNER NUMBER
117839020

STEP	HISTORY()	RESTORATION()
Form Prepared, DB	10-25-06	10-25-06
Field Inspection, DB	10-25-06	10-25-06
Form Checked, DB	11-7-06	11-7-06
Form Edited, DB	11-7-06	11-7-06
Form Signed, DB	11-7-06	11-7-06
Counter Index	11-6-06	11-6-06
GIS Index	11-7-06	11-7-06
Authorize Payment, DB	—	—
Archive Digital Files	2/1/07	2/1/07
Collect Documents	10-25-06	10-25-06
Scanned	11/7/06	11/7/06
Copy For Filming	11/7/06	11/7/06
Filed, DB	2/01/07	2/01/07
Finish index (count unit)	10-25-06	10-25-06
Filmed (Archived), DB	2/01/07	2/01/07

(DB) = Entry needed in database (Access).

COMMENTS: CORRECTIONS MADE 12/05/11

DATE 10/25/2006TOWNSHIP 11SOUTH, RANGE 07 WEST, WILLAMETTE MERIDIAN; SECTION 25 CORNER NONE
DONATION LAND CLAIM NATHANIEL CHURCH NO. 39 CORNER SOUTHEAST**COMMON CORNER(S):**

SW CORNER HEIRS OF STEPHEN KING NO. 43

RECORDS (INFORMATION IN *BOLD ITALICS* IS COUNTY STAFFS' INTERPRETATION OF THE RECORD)

BASED ON EXTENSIVE RESEARCH AND RECOVERY OF EVIDENCE, THIS OFFICE HAS DETERMINED THAT MOST GENERAL LAND OFFICE SURVEYORS MEASURED TO THE FACE OF BEARING TREES.

- [01] GENERAL LAND OFFICE (GLO) NOTES OF THE NATHANIEL CHURCH DLC NO. 39 BY L. A. DAVIS, D.S., DATED JUNE 1857. *SET POST FOR CORNER TO CLAIM 39 AND 43 FROM WHICH A WHITE OAK 18 INS DIAM. BEARS N64°45'E, 138 LKS (91.08 FEET). AT 8.25 CHS EAST INTERSECT THE LINE BETWEEN SECS 25 & 30 AND 4.47 CHS SOUTH TO THE CORNERS OF SECS. 30 & 31, 25 & 36 T11S, R6 & 7 W.*
- [02] GLO NOTES OF THE HEIRS OF STEPHEN KING DLC NO. 43 BY L. A. DAVIS, D.S., DATED JUNE 18, 1857. *WEST ON RANDOM LINE, THE S. BDY. OF CLAIM 70 . . . FELL 15 LKS SOUTH OF THE SE COR. TO CLAIM 39 WHICH GIVES FOR THE TRUE LINE OF THE SOUTH BDY. OF CLAIM 70 AND 43, N89°47'W AND INTERSECTION TO BE 4.47 CHS. NORTH OF THE COR. TO SECS. 25 AND 36, T11S, R7W, 30 AND 31, T11S, R6W AND 8.25 CHS. WEST OF THE SW COR. TO CLAIM 43 AND THE SE COR. TO CLAIM 39, FROM WHICH A WHIT OAK, 18 INS. DIAM. BEARS N64°45'E, 138 LKS (91.08 FEET) DIST.*
- [03] COUNTY SURVEY NO. 7013 BY ARNOLD BRUBAKER, P.L.S., DATED FEBRUARY 2, 1979 AND REVISED FEBRUARY 13, 1979. *SW COR. KING DLC NOT FOUND.*
- [04] PARTITION PLAT NO. 2006-49 BY TED LANGTON, P.L.S., DATED SEPTEMBER 18, 2006. *CORNER NOT FOUND, TIED OR DESCRIBED.*

NOTES:THIS IS A MICROSOFT WORD 2000 DOCUMENT NAMED *17839020* "~~00000000~~" CREATED FROM A BOILER PLATE DOCUMENT NAMED "HISTORY", WHICH HAS A STYLESHEET NAMED "CORNER" ATTACHED TO IT.

FIRM/AGENCY: BENTON COUNTY SURVEYOR'S OFFICE
ADDRESS: 360 S.W. AVERY AVE. CORVALLIS OR 97333; PH. 766-6821
RESEARCH BY: DAVID M. DEAN, P.L.S.
DATA ENTRY BY: SAME

BENTON COUNTY CORNER RESTORATION FORM, PAGE 1 OF 2, 117839020R1

SEE CORNER HISTORY FORM FOR RECORDS ETC.

CORNER RESTORATION FIELD BOOK NUMBER 24 PAGE(S) 62 DATE 10/25/2006
TOWNSHIP 11 SOUTH, RANGE 7 WEST, WILLAMETTE MERIDIAN; SECTION 25 CORNER NONE
DONATION LAND CLAIM NATHANIEL CHURCH NO. 39 CORNER SOUTHEAST
CONDITION REPORT ; REFERENCED OUT ; RENEWED XX; SURVEYED IN

LOCATION AND COMMENTS:

CORNER IS LOCATED ON A GENTLE NORTH FACING SLOPE IN AN AREA OF ±30 YEAR OLD D. FIR. TO REACH CORNER FROM THE HARRIS COVERED BRIDGE OVER MARYS RIVER, TRAVEL WESTERLY ON HARRIS ROAD (COUNTY ROAD NO. 16520) FOR 0.95 MILES; THEN LEFT ON DRIVEWAY TO 22518 HARRIS ROAD AND DRIVE SOUTHERLY FOR 0.20 MILES TO RAILROAD; THEN WALK WESTERLY ALONG RAILROAD FOR 700 FEET; THEN SOUTH ACROSS FIELD AND SCATTERED D. FIR FOR 440 FEET TO CORNER. CORNER IS OKAY FOR PREMARKING AND GPS CONTROL FOR A FEW MORE YEARS.

MONUMENTS AND ACCESSORIES FOUND (CONDITION AND SOURCE):

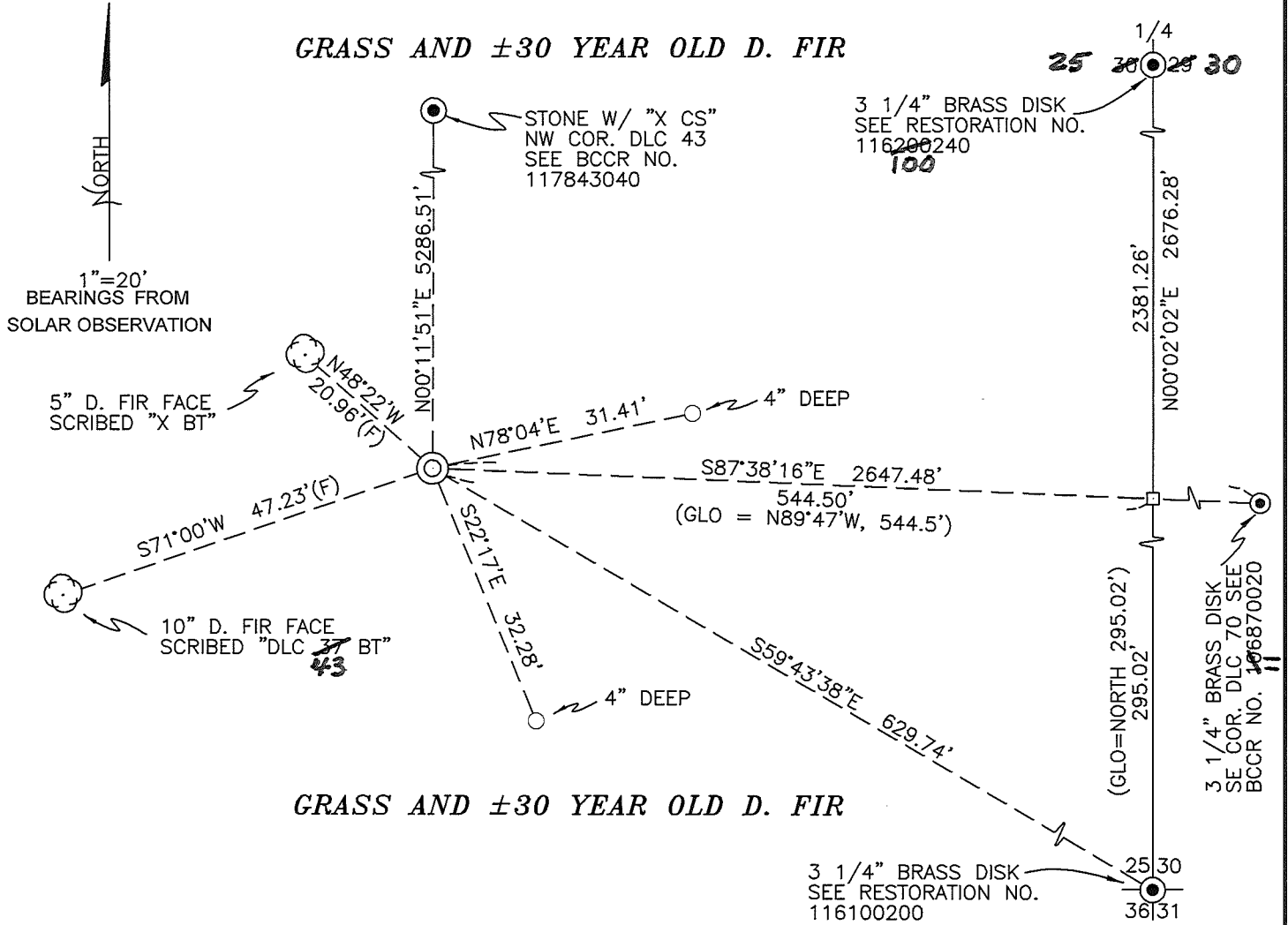
1. FOUND 3 1/4" BRASS DISK AT THE SOUTHEAST CORNER OF THE HEIRS OF STEPHEN KING DLC NO. 70, S87°38'16"E, 2647.48 FEET. SEE RESTORATION NO. 116870020.
(POST, S89°47'E, 2649.90 FEET PER RECORD [01]).
2. FOUND 3 1/4" BRASS DISK AT THE SOUTHWEST CORNER OF SECTION 30, S87°38'16"E, 544.50 FEET AND S00°02'02"W, 295.02 FEET. SEE RESTORATION NO. 116100200.
(EAST, 544.50 FEET AND SOUTH 295.02 FEET PER RECORD [01]).
(S89°47'E, 544.50 FEET AND SOUTH 295.02 FEET PER RECORD [02]).
3. FOUND STONE WITH "X CS" AT NORTHWEST CORNER OF THE HEIRS OF STEPHEN KING DLC NO. 43, N00°11'51"E, 5286.51 FEET. SEE RESTORATION NO. 117843040.
(NORTH, 5280 PER RECORD [02]).
4. FOUND 3 1/4" BRASS DISK AT THE 1/4 CORNER COMMON TO SECTIONS ²⁵~~28~~ AND 30, S87°38'16"E, 544.50 FEET AND N00°02'02"E, 2381.26 FEET. **SEE RESTORATION NO. 116100240**

MONUMENT SET (PROCEDURES AND DESCRIPTION):

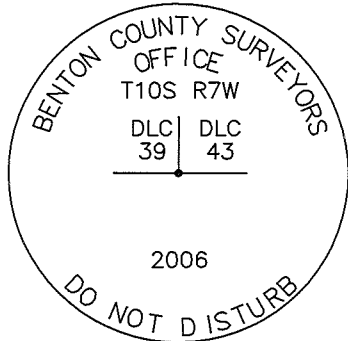
NO GLO MONUMENT OR ACCESSORY COULD BE FOUND AFTER A THOROUGH SEARCH OF THE AREA. WE HAVE DETERMINED THIS CORNER TO BE LOST. WE CALCULATED THE POSITION FOR THE SUBJECT CORNER BY THE FOLLOWING METHOD:

1. HELD THE SOUTHEAST CORNER OF THE HEIRS OF STEPHEN KING DLC NO.70 (SEE RESTORATION NO. 1168700200).
2. HELD THE PASSING CALL OF 4.47 CHAINS (295.02 FEET) NORTH ALONG THE SECTION LINE FROM THE SOUTHWEST CORNER OF SECTION 30.
3. EXTENDED THE DLC LINE AS ESTABLISHED ABOVE, A RECORD DISTANCE OF 8.25 CHAINS (544.50 FEET) WESTERLY TO OUR CALCULATED POSITION.

AT SAID CALCULATED POSITION, SET A 2" X 3 1/2" GALVANIZED IRON PIPE WITH A 3 1/4" BRASS DISK CONCRETED IN THE TOP, FLUSH WITH GROUND LEVEL AND MARKED AS SHOWN ON PAGE 2 OF 2. SET A 6 FOOT ORANGE CARSONITE "SURVEY MARKER" POST, 0.5 FEET SOUTH OF MONUMENT. FOR ADDITIONAL GRAPHIC DETAILS AND NARRATIVE, SEE COUNTY SURVEY NO. 10145.



MONUMENT DETAIL



3 1/4" BRASS DISK

LEGEND

- SET 5/8" X 30" REBAR WITH YELLOW PLASTIC CAP MKD "BENTON COUNTY SURVEYOR"
- (F) MEASUREMENT TO FACE
- ⊙ GOVERNMENT MONUMENT SET AS SHOWN
- GOVERNMENT MONUMENT FOUND AS SHOWN
- BT BEARING TREE AS NOTED
- CALCULATED POINT NO MONUMENT SET

NEW ACCESSORIES:

1. SET REBAR (SEE LEGEND) 4" BELOW GROUND LEVEL N78°04'E, 31.41 FEET.
2. SET REBAR (SEE LEGEND) 4" BELOW GROUND LEVEL S22°17'E, 32.~~38~~²⁸ FEET.
3. FACE SCRIBED A 10" D. FIR "DLC 43 BT" S71°00'W, 47.23 FEET TO FACE. SET ALUMINUM NAIL AND PLASTIC WASHER AT BOTTOM OF FACE FOR DISTANCE AND ANGLE MEASUREMENT.
4. FACE SCRIBED A 5" D. FIR "X BT" N48°22'W 20.96 FEET TO FACE. SET ALUMINUM NAIL AND PLASTIC WASHER AT BOTTOM OF FACE FOR DISTANCE AND ANGLE MEASUREMENT.

NOTES:

COMPASS DECLINATION IS 20° EAST. ALL MEASURED DISTANCES AND BEARINGS ARE TO THE CENTER OF THE OBJECT, UNLESS OTHERWISE NOTED. ALL BEARING TREES ARE PAINTED AND HAVE A B.T. TAG ATTACHED, FACING THE CORNER UNLESS OTHERWISE NOTED. ALL NEW BEARING TREES HAVE A PLASTIC WASHER (STAMPED "BENTON COUNTY SURVEYOR CORNER RESTORATION") ATTACHED (BY ALUMINUM NAIL) TO THE FACE, BELOW THE "BT" FOR DISTANCE AND ANGLE MEASUREMENT UNLESS OTHERWISE NOTED. THE DRAWING IS FROM AUTOCAD RELEASE 2006.

THIS RESTORATION WAS PERFORMED AT THE DIRECTION AND APPROVAL OF THE BENTON COUNTY SURVEYOR. *Rc* **CORRECTION 12-5-11** *gln*

REGISTERED
PROFESSIONAL
LAND SURVEYOR

David M. Dean
OREGON
JULY 13, 1984
DAVID M. DEAN
2090

FIRM/AGENCY: BENTON COUNTY SURVEYOR'S OFFICE
ADDRESS: 360 S.W. AVERY AVE. CORVALLIS OR 97333; PH. 766-6821
PRESENT: DAVID M. DEAN, P.L.S. AND BERNIE ALTENBACH, SURVEY TECH.
EQUIPMENT: LEICA TRC 1105 WITH TDS ONBOARD

11/7/06

RENEWAL DATE: 12/31/07

107039020

REMONUMENTING SW HEARS S. KING

DLC 43 T115 R7W

NO COR. MON. OR ACCESSORIES COULD BE

FOUND. LOST CORNER. CALC. POSITION OF

COR. BY HOLDING SE COR KING DLC AND

PASSING CALL TO L SEC 30 11-6 AND

EXTENDING LINE W/ RECORD GLO DST

OF 8.25 CHS. AT CALC. POSITION SET

2" X 3 1/2" G.I.P. W/ 3 1/4" BRASS DISK

CONK. IN TOP FLUSH W/ GROUND AND

MILD AS SHOWN.

SET 6' ORANGE CARBONITE POST 0 1/2 SOUTH

T115 R7W

DLC
39 43

2006

3 1/4" BRASS DISK

126-143-146

146) AS SET E DLC 43

T115 R7W

126-143 55

146) HIT

126-143-144 55

144) SPIKE

125-126-143

143) HIT

CLEARFIELD

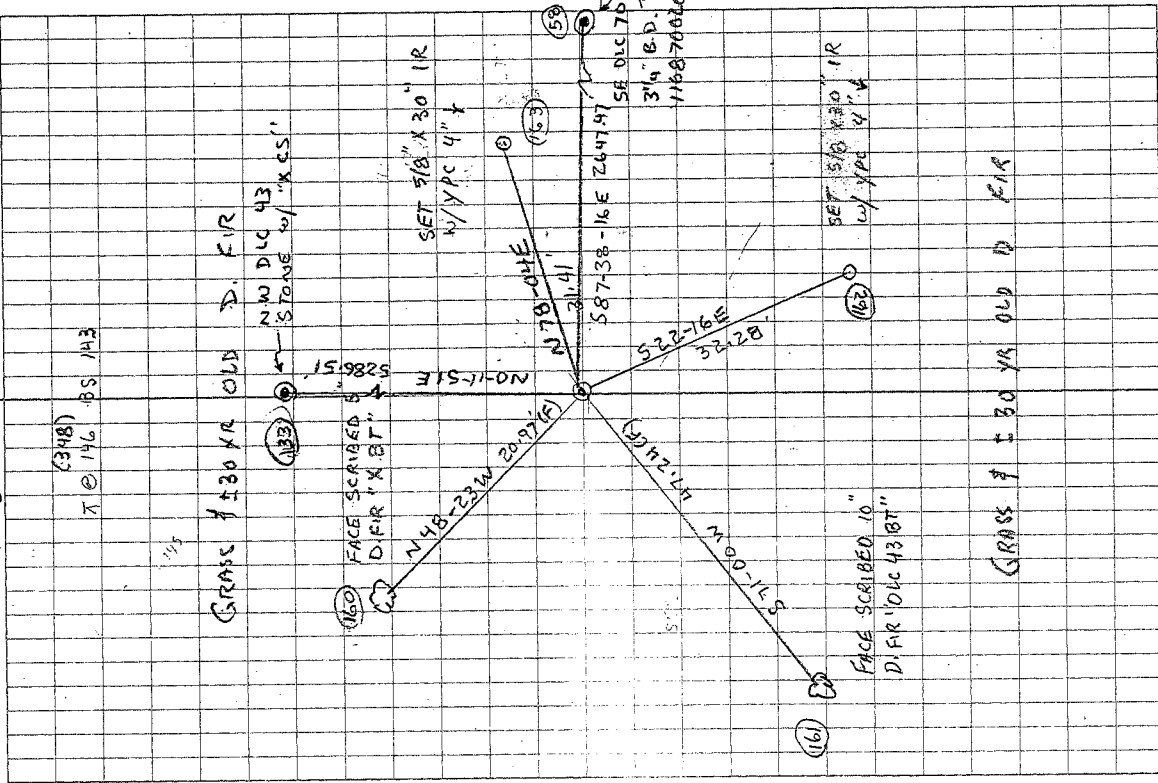
60° F 30.0" Hg

LEICA TCR 105/TDS

10/25/06 24/62

D. DEAN

B. ALTENBACH



(348) T 0 196 BS 143

GRASS 1 1/2 100 YR OLD D. FIR
NEW DLC 43
STONE w/ 'XCS'

(160) FACE SCRIBED 8
D. FIR 10 1/2 43 107

SET 518 X 30 IR
w/ YPC 4" x 4"

(163)

(58) SE DLC 70
3 1/4" B.D.
116870020

(161) FACE SCRIBED 10
D. FIR 10 1/2 43 107

SET 510 X 30 IR
w/ YPC 4" x 4"

GRASS 1 1/2 30 YR OLD D. FIR