

117842040

CORNER FILE TRACKING

CORNER NUMBER
117842040

STEP	HISTORY	RESTORATION
Form Prepared, DB	6/15/21	
Field Inspection, DB		
Finish index (count unit)	6/15/21	
Counter Index		
GIS Index Form		
Checked, DB		
Form Edited, DB		
Form Signed, DB		
Authorize Payment, DB		
Archive Digital Files		
Collect Documents		
PDF File		
Copy For Filming		
Scanned (pdf to laserfiche)		
Filmed (Archived), DB		
Filed, DB		

(DB) = Entry needed in database (Access).

COMMENTS:

DATE 06/15/2021TOWNSHIP 11 SOUTH, RANGE 7 WEST, WILLAMETTE MERIDIAN; SECTION 26 CORNER N/A
DONATION LAND CLAIM WILLIAM S. MCCULLOUGH NO. 42 CORNER INTERIOR-SOUTHWEST**COMMON CORNER(S):**

NONE

RECORDS (INFORMATION IN *BOLD ITALICS* IS COUNTY STAFFS' INTERPRETATION OF THE RECORD)

BASED ON EXTENSIVE RESEARCH AND RECOVERY OF EVIDENCE, THIS OFFICE HAS DETERMINED THAT MOST GENERAL LAND OFFICE SURVEYORS IN BENTON COUNTY BEFORE 1890 MEASURED TO THE FACE OF BEARING TREES.

- [01] GENERAL LAND OFFICE (GLO) NOTES OF THE WILLIAM S. MCCULLOUGH DONATION LAND CLAIM NO. 42 BY L. A. DAVIS, D.S., DATED JUNE 18, 1857. *SET A POST FOR CORNER, MADE MOUND AND TRENCH AS PER INSTRUCTIONS, FROM WHICH A FIR 15" DIA BEARS N85°E, 89 LINKS (58.74 FEET).*
- [02] BENTON COUNTY SURVEY NO. 598 (OLD NO. 88) FIELD NOTES (FIELD BOOK 23, PAGE 5) BY W. C. GALLOWAY, C.S., DATED JULY 13, 1917. *SET 1/2" X 2-1/2" X 20" IRON FROM FIR STUMP (GLO BT) BEARS N85°E, 0.89 CHAINS (58.74 FEET). OAK 9" DIA BEARS N52°40'E, 0.308 CHAINS (20.33 FEET); FIR 18" DIA BEARS S26°20'E, 0.906 CHAINS (59.80 FEET).*
- [03] BENTON COUNTY CORNER RESTORATION BOOK NO. 1, PAGE 125, BY W. C. GALLOWAY, C.S., DATED JULY 13, 1917. *SET 1/2" X 2-1/2" X 20" IRON BAR. SET FROM FIR STUMP (GLO BT) BEARS N85°E, 0.89 CHAINS (58.74 FEET). OAK 9" DIA (CSBT) BEARS N52°40'E, 0.308 CHAINS (20.33 FEET); FIR 18" DIA (CSBT) BEARS S26°20'E, 0.906 CHAINS (59.80 FEET).*
- [04] BENTON COUNTY CORNER RESTORATION NO. 1184. *TRANSCRIBED FROM RECORD [03] AND MAY CONTAIN ERRORS AND/OR OMISSIONS.*
- [05] BENTON COUNTY SURVEY NO. 598 (OLD NO. 88) MAP BY W. C. GALLOWAY, C.S., DATED JULY, 1917. *IRON BAR.*
- [06] BENTON COUNTY MAP NO. 11-7-00013 BY W. C. GALLOWAY, C.S., DATED JULY, 1917. *1/2" X 2-1/2" X 20" IRON. OAK 9" DIA (CSBT) BEARS N52°40'E, 0.308 CHAINS (20.33 FEET); FIR 18" DIA (CSBT) BEARS S26°20'E, 0.906 CHAINS (59.80 FEET).*
- [07] BENTON COUNTY ROAD NO. 16520 (OLD COUNTY SURVEY NO. 88) MAP BY W. C. GALLOWAY, C.S., DATED JULY, 1917. *IRON BAR.*
- [08] STARKER FORESTS MAP BY UNKNOWN DRAFTSMAN, NO DATE GIVEN. *1/2" X 2-1/2" X 20" IRON. OAK 9" DIA (CSBT) BEARS N52°40'E, 0.308 CHAINS (20.33 FEET); FIR 18" DIA (CSBT) BEARS S26°20'E, 0.906 CHAINS (59.80 FEET).*
- [09] STARKER FORESTS MAP BY BARTE STARKER, DATED MAY, 1972. *1/2" X 2-1/2" X 20" IRON. FIR 18" DIA (CSBT) BEARS S26°20'E, 0.906 CHAINS (59.80 FEET).*
- [10] BENTON COUNTY SURVEY NO. 9428 BY JIM S. PETERSON, P.L.S., DATED APRIL 30, 1999. *FOUND 1/2" X 2-1/2" IRON BAR. FOUND OAK 18" DIA (CSBT) BEARS N52°40'E, 0.308 CHAINS (20.33 FEET), HEALED FACE. CORNER LIES AT BASE OF 30" FIR, 200 FEET WEST OF HOUSE.*
- [11] NOTE FROM STARKER FORESTS RECORDS WRITTEN ON COPY OF C.S. 9428 DATED JULY 25, 2001. *GOOD CONDITION.*
- [12] BENTON COUNTY CORNER RESTORATION NO. 117842040R2, BY CURTIS J. LIESENFELT, P.L.S., DATED AUGUST 29, 2001. *FOUND 1/2" X 2-1/4" IRON BAR, FOR THE CORNER, 5" ABOVE GROUND SURFACE, AND ON THE SOUTHEASTERLY SIDE OF A 37" D. FIR. FOUND REMAINS OF A FIR STUMP. SET 5/8" X 30" REBAR WITH A 1-3/4" RED PLASTIC CAP MARKED "BENTON COUNTY SURVEYOR'S OFFICE" IN THE CENTER, 3" BELOW GROUND SURFACE, BEARS S89°02'E, 58.45 FEET. FOUND REMAINS OF A FIR STUMP. SET 5/8" X 30" REBAR WITH A 1-3/4" RED PLASTIC CAP MARKED "BENTON COUNTY SURVEYOR'S OFFICE" IN THE CENTER, 2" BELOW GROUND SURFACE, BEARS S25°47'30"E, 58.55 FEET. FOUND OAK 19" DIA WITH A HEALED UPPER FACE BEARS N50°15'E, 19.91 FEET. SET AN ALUMINUM NAIL AND PLASTIC WASHER IN THE SOUTHEASTERLY BASE. DID NOT SET A NEW MONUMENT BECAUSE THE 37" D. FIR WILL PROBABLY DISPLACE THE RECOVERED IRON BAR BEFORE TOO LONG. SET A PUNCH HOLE IN THE TOP CENTER OF SAID IRON BAR FOR THE CORNER MONUMENT. SET 5/8" X 30" REBAR WITH A 1-3/4" RED PLASTIC CAP MARKED "BENTON COUNTY SURVEYOR'S OFFICE", 7" BELOW GROUND SURFACE, BEARS S57°21'W, 34.19 FEET. A D. FIR 16" DIA FACED AND SCRIBED "DLC42BT" BEARS N16°58'W, 68.90 FEET. SET ORANGE FIBERGLASS "SURVEY MARKER" POST 1 FOOT EAST-SOUTHEASTERLY. FOUND WHITE FIBERGLASS "T" POST 0.7 FEET SOUTHEASTERLY.*

FIRM/AGENCY: BENTON COUNTY SURVEYOR'S OFFICE
ADDRESS: 360 S.W. AVERY AVE., CORVALLIS, OR 97333; PH. 541-766-6821
RESEARCH BY: DAVID L. MALONE, P.L.S.
DATA ENTRY BY: SAME

DATE 08/28/2001TOWNSHIP 11 SOUTH, RANGE 07 WEST, WILLAMETTE MERIDIAN; SECTION 26 CORNER N/A
DONATION LAND CLAIM WILLIAM S. M^CCULLOUGH NO. 42 CORNER INTERIOR-SOUTHWEST**COMMON CORNER(S):**

NONE

RECORDS (INFORMATION IN *BOLD ITALICS* IS COUNTY STAFFS' INTERPRETATION OF THE RECORD)

- [01] ORIGINAL GLO SURVEY BY L. DAVIS, D.S., APPROVED ON JANUARY 7, 1857. *SETS A POST WITH A MOUND, TRENCH AND 1 BEARING TREE, MEASURED TO THE FACE.*
- [02] COUNTY SURVEY NO. 598 (OLD NO. 88) NOTES (FIELD BOOK NO. 23, PAGE 5) BY W.C. GALLOWAY, C.S., DATED JULY 13, 1917. *FINDS 1 BEARING TREE. SETS AN IRON BAR FROM IT AT FACE MEASURE, WITH 2 NEW BEARING TREES, MEASURED TO THE CENTER PER ATTACHMENT "A".*
- [03] OLD CORNER BOOK NO. 1 PAGE 125 BY W.C. GALLOWAY, C.S., DATED JULY 13, 1917. *SIMILAR INFORMATION AS RECORD [02].*
- [04] CORNER RESTORATION NO. 1184. *THIS IS A TRANSCRIBED COPY OF RECORD [03] AND MAY CONTAIN ERRORS AND OMISSIONS.*
- [05] MAP NO. 11-7-00013 BY W.C. GALLOWAY, DATED JULY, 1917. *IRON WITH 2 BEARING TREES.*
- [06] COUNTY ROAD NO. 16520 (OLD COUNTY SURVEY NO. 88) MAP (VAULT BOX NO. 2) BY W.C. GALLOWAY, DATED JULY, 1917. *IRON BAR.*
- [07] STARKER MAP BY STARKER FORESTS, NO DATE GIVEN. *SIMILAR INFORMATION AS RECORD [05]).*
- [08] STARKER MAP BY STARKER FORESTS, DATED MAY, 1972. *IRON WITH 1 BEARING TREE.*
- [09] COUNTY SURVEY NO. 9428 BY JIM S. PETERSON, P.L.S., DATED APRIL 30, 1999. *FOUND IRON BAR WITH 1 BEARING TREE.*
- [10] STARKER NOTE BY STARKER FORESTS, DATED JULY 25, 2001. *FOUND IN GOOD CONDITION.*

COMMENTS/LOCATION/ETC:**NOTES:**

THIS IS A MICROSOFT WORD 97 DOCUMENT NAMED "17842040" CREATED FROM A BOILER PLATE DOCUMENT NAMED "HISTORY", WHICH HAS A STYLESHEET NAMED "CORNER" ATTACHED TO IT.

FIRM/AGENCY: BENTON COUNTY SURVEYOR'S OFFICE
ADDRESS: 360 S.W. AVERY AVE. CORVALLIS OR 97333; PH. 766-6821
RESEARCH BY: CURTIS J. LIESENFELT, P.L.S.
DATA ENTRY BY: SAME

SEE CORNER HISTORY FORM FOR RECORDS ETC.

CORNER RESTORATION FIELD BOOK NUMBER 19 PAGE(S) 49 DATE 08/29/2001
TOWNSHIP 11 SOUTH, RANGE 7 WEST, WILLAMETTE MERIDIAN; SECTION 26 CORNER N/A
DONATION LAND CLAIM WILLIAM S. M^cCULLOUGH NO. 42 CORNER INTERIOR-SOUTHWEST
CONDITION REPORT ; REFERENCED OUT ; RENEWED XX; SURVEYED IN

LOCATION AND COMMENTS:

THE CORNER IS LOCATED ON A MODERATELY SLOPING, WESTERLY FACING, HEAVILY WOODED AND BRUSHY HILLSIDE, ABOUT 200' WESTERLY OF THE HOUSE AT NO. 21847 HARRIS ROAD AND AT THE EASTERLY END OF A POSTED AND BLAZED LINE. IT IS POOR FOR PREMARKING AND GPS CONTROL.

MONUMENTS AND ACCESSORIES FOUND (CONDITION AND SOURCE):

FOUND: 1/2" x 2 1/4" IRON BAR, FOR THE CORNER, 5" ABOVE GROUND SURFACE, AND ON THE SOUTHEASTERLY SIDE OF A 37" D. FIR.

(SET 1/2" x 2 1/2" x 20" IRON PER RECORD [02]).

(SET 1/2" x 2 1/2" x 20" IRON BAR PER RECORD [03]).

(1/2" x 2 1/2" x 20" IRON PER RECORDS [05], [07] AND [08]).

(IRON BAR PER RECORD [06]).

(FOUND 1/2" x 2 1/2" IRON BAR PER RECORD [09]).

FOUND: REMAINS OF A FIR STUMP. SET A REBAR (SEE LEGEND) IN THE CENTER, 3" BELOW GROUND SURFACE, BEARS S 89°02'E~58.45'.

(15" FIR, N 85°E~58.74' PER RECORD [01]).

(FIR STUMP, N 89°E~58.74' PER RECORDS [02] AND [03]).

FOUND: REMAINS OF A FIR STUMP. SET A REBAR (SEE LEGEND) IN THE CENTER, 2" BELOW GROUND SURFACE, BEARS S 25°47'30"E~58.55'.

(18" FIR, S 26°20'E~59.80' PER RECORDS [02], [03], [05], [07], AND [08]).

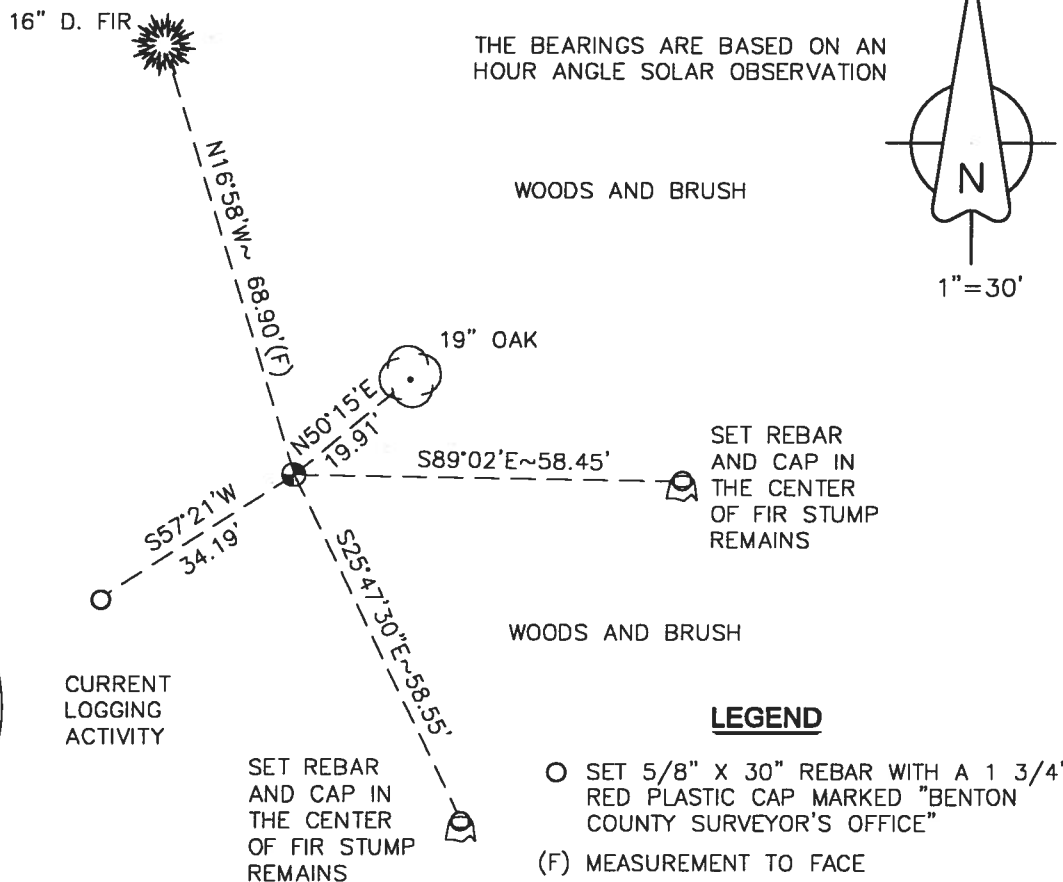
FOUND: 19" OAK WITH A HEALED UPPER FACE, BEARS N 50°15'E~19.91'. SET AN ALUMINUM NAIL AND PLASTIC WASHER IN THE SOUTHEASTERLY BASE.

(9" OAK, N 52°40'E~20.33' PER RECORDS [02], [03], [05], AND [07]).

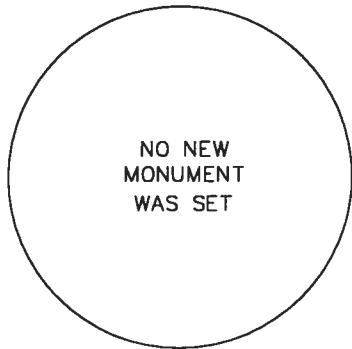
MONUMENT SET (PROCEDURES AND DESCRIPTION):

DID NOT SET A NEW MONUMENT BECAUSE THE 37" D. FIR WILL PROBABLY DISPLACE THE RECOVERED IRON BAR BEFORE TOO LONG. SET A PUNCH HOLE IN THE TOP CENTER OF SAID IRON BAR FOR THE CORNER MONUMENT.

SKETCH



MONUMENT DETAIL



CURRENT LOGGING ACTIVITY

LEGEND

- SET 5/8" X 30" REBAR WITH A 1 3/4" RED PLASTIC CAP MARKED "BENTON COUNTY SURVEYOR'S OFFICE"
- (F) MEASUREMENT TO FACE

NEW ACCESSORIES:

- SET: REBAR (SEE LEGEND) 7" BELOW GROUND SURFACE, BEARS S 57°21'W ~ 34.19'.
- A 16" D. FIR FACED AND SCRIBED, "DLC42BT" BEARS N 16°58'W ~ 68.90'.
- SET: ORANGE FIBERGLASS "SURVEY MARKER" POST 1' EAST-SOUTHEASTERLY.
- FOUND: WHITE FIBERGLASS "T" POST 0.7' SOUTHEASTERLY.

NOTES:

COMPASS DECLINATION IS 20° EAST. ALL MEASURED DISTANCES AND BEARINGS ARE TO THE CENTER OF THE OBJECT, UNLESS OTHERWISE NOTED. ALL BEARING TREES ARE PAINTED AND HAVE A B.T. TAG ATTACHED, FACING THE CORNER UNLESS OTHERWISE NOTED. ALL NEW BEARING TREES HAVE A PLASTIC WASHER (STAMPED "BENTON COUNTY SURVEYOR CORNER RESTORATION") ATTACHED (BY ALUMINUM NAIL) TO THE FACE, BELOW THE "BT" FOR DISTANCE AND ANGLE MEASUREMENT UNLESS OTHERWISE NOTED.

THIS DOCUMENT WAS NAMED AND CREATED IN A MANNER SIMILAR TO THE HISTORY FORM. THE NAME OF THE BOILER PLATE IS "MONUMENT". THE SKETCH IS FROM AUTOCAD RELEASE 14.

THIS RESTORATION WAS PERFORMED AT THE DIRECTION AND APPROVAL OF THE BENTON COUNTY/DEPUTY COUNTY SURVEYOR. RW

FIRM/AGENCY: BENTON COUNTY SURVEYOR'S OFFICE
ADDRESS: 360 S.W. AVERY AVE. CORVALLIS OR 97333; PH. 766-6821
SURVEYOR: CURTIS J. LIESENFELT, P.L.S.
SURVEY CREW: JOSH J. RUDIGER, SURVEY TECHNICIAN

REGISTERED PROFESSIONAL LAND SURVEYOR

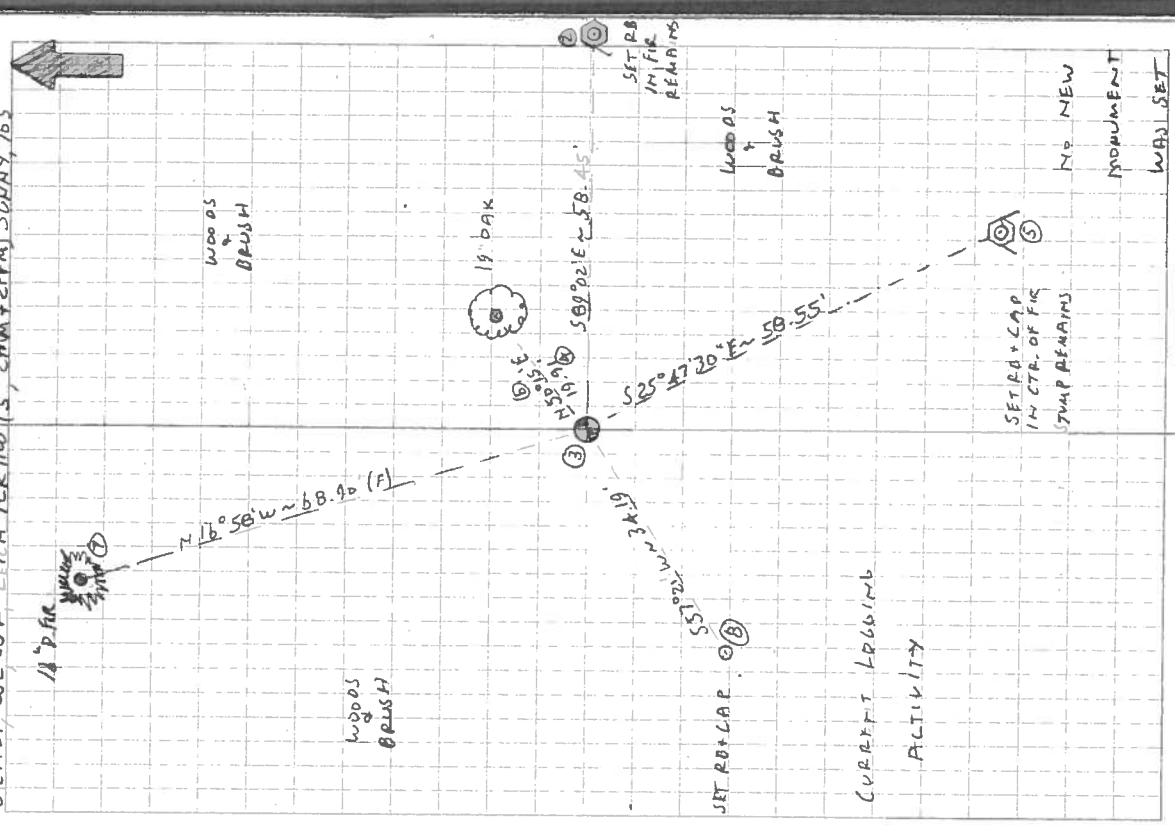
Curtis J. Liesenfelt

OREGON
 JULY 17, 1986
 CURTIS J. LIESENFELT
 2213

LICENSE RENEWAL 12/31/2002

19/49

B127/01, CTL QJR L.P.A. ICR 1105 (5" 2MM + 2PPM) SUNNY, 703



B42040

THIS RW S26 INT SW COR WILLIAM S. McCULLOUGH D.L.C. 42

TRC #1 SET BL NAIL IN YARD, BS #2 SET RB IN FIR REMAINS

3" BGS HD=122.033 FS TRAILING EDGE OF SUN

AVG. N. AZ. = 255° 57' 56"

TRC #2, BS #1 @ N. AZ. OF 75° 57' 56" FOR THE COR, 6" BS

SS #3 FMD 12"x2" 1/4" BAR V. ON SE 1/4 SIDE OF 37" D. FIR

SS #4 4x6 1/4" DAK @ A HFALED UPPER FACE BAS 85095 W ~ 19.91'

SS #5 FMD. REMAINS OF 0" FIR STAMP, SET RB IN I.C.T.R. 3" BS

SET PUNCH HOLE IN TOP CTR OF REL. 1. BAR

BS #7 1 1/2" O.F. FAULT + S. CR. 1950' O.L.L. 42 07" BS 216050 W ~

6B. 90'(F) 69.6'(C) H = 500

SS #8 SET RB 7" BGS S 57° 21' W ~ 34.19'

INV. 3-2 ~ S 09° 02' E ~ 5B. 45'

FMD WHITE FIBERGLASS "T" POST 0.7' SE 1/4

SET ORANGE "SURVEY MARKER" POST 1' E SE 1/4

V CTR. = 75° 50' 00"

THE COR. IS LOCATED ON A BENTLY SLOPING, W'Y FACING, HEAVILY WOODED + BRUSHY HILLSIDE ABOUT 200' W'Y OF THE HOUSE # 218 AT HARRIS RD. IT IS POOR FOR PRE-MARKING + GPS CONTROL.

SET A PUNCH HOLE IN THE CTR. OF THE RECOVERED L. BAR FOR THE COR.

C.S. 259¹ $\frac{1}{4}$ sec. cor. between secs. 77 & 9 T. 11 S. R. 5 W.

Set a stone 5"X10"X8"

Oak 14" in dia. bears S. 87° E. 1.322 chs. std. dead.

" 6" " " " N. 6° W. .63 " " "

Mkd. Fir 15" " " " N. 55° E. .105 "

" " 14" " " " S. 84° W. .061 "

Aug. 14, 1917.

C.S. #88 cont.

Most west S.W. corner of Wm. McCullough D.L.C. 42 T. 11-7.

Set $\frac{1}{2}$ "X $2\frac{1}{2}$ "X20" iron bar Set from fir 40"N. 87°30'E. 3.79 chs. stump.

Fir 10" in dia. bears N. 41° E. .247 chs.

" 8" " " " N. 23° W. .278 "

Witnesses John E. Thompson & Victor Plunket July 25, 1917.

Interior Cor. of Wm. McCullough D.L.C. 42 T. 11-7.

Set $\frac{1}{2}$ "X $2\frac{1}{2}$ "X20" iron bar Set from Fir stump N. 85° E. .89 chs.

Oak 9" in dia. bears N. 52° 40' E. .308 chs.

Fir 18" " " " S. 26° 20' E. .906 "

Witnesses W. H. Price and Edd. Davis. July 13, 1917.

Most south S.W. corner of Wm. McCullough D.L.C. #42 T. 11-7.

Set $\frac{1}{2}$ "X $2\frac{1}{2}$ "X18" iron bar Set from fir stump 42° N. 12°15'E. 1.52 chs.

Fir 13" in dia. bears N. 65° 30' E. .234 chs.

" 16" " " " S. 41° E. .231 "

Witnesses W. H. Price and Edd. Davis. July 14, 1917.

Corner to secs. 25, 26, 35 & 36 T. 11 S. R. 7 W.

Set a 1"X22" pipe

Oak 24" in dia. bears N. 1° 10' E. 4.27 chs. std.

" 12" " " " S. 75° 45' E. 2.04 " "

" 24" " " " S. 78° W. 1.77 " "

" 8" " " " N. 33° W. .117 "

" 8" " " " S. 75° about W. .030 " not mkd.

Witnesses W. H. Price and Edd. Davis July 14, 1917.

 $\frac{1}{4}$ sec. cor. bet. secs. 26 & 35 is on page 35

Corner to sections 26, 27, 34 & 35 T. 11 S. R. 7 W.

Set $\frac{1}{2}$ "X $2\frac{1}{2}$ "X20" iron bar

Fir 24" in dia. bears N. 61° E. 2.135 chs. Remarked

" 9" " " " S. 50° E. 1.24 " std.

" 24" " " " S. 14° W. over 4.31 about 5.04 stump.

" 6" " " " S. 19° W. .073 chs.

" 12" " " " N. 9° W. .179 "

" 24" " " " N 5° W. 2.77 " stump.

Witnesses John E. Thompson & Victor Plunket

Interior corner of William McCullough DLC 42, Twp. 11 S., R. 7. W. 1184

Reestablishment by W. C. Galloway

July 13, 1917

1401

Set $\frac{1}{2}$ " x $2\frac{1}{2}$ " x 20" iron bar, Set from Fir stump N 85° E .89 chains
Oak 9" in diam bears N 52° 40' E .308 chains
Fir 18" in diam bears S 26° 20' E .906 chains

Witnesses W. H. Price and Edd Davis