

CORNER FILE TRACKING

H:\Survey\Corners\Misc\Filetrac.doc

11/23/98

CORNER NUMBER

117843040

STEP	HISTORY()	RESTORATION()
Form Prepared, DB	01/04/06	01/26/06
Field Inspection, DB	01/24/06	01/24/06
Form Checked, DB	3-9-06	3-9-06
Form Edited, DB	3-9-06	3-9-06
Form Signed, DB	3-9-06	3-9-06
Counter Index	01/24/06	01/24/06
GIS Index	1/26/06	1/26/06
Authorize Payment, DB		
Archive Digital Files	3-10-06	3-10-06.
Collect Documents		
Scanned	3/14/06	3/14/06
Copy For Filming		
Filed, DB		
Finish index (count unit)		
Filmed (Archived), DB		

(DB) = Entry needed in database (Access).

COMMENTS:

C.S. No. 82 Cont

The Standard Cor. of Secs. 14 & 2, T. 14 S., R. 6 W.

Set $\frac{3}{4}$ " X 24" Galv. Pipe for Cor. From WhichOak 15" in diam. bears S. 51 $\frac{1}{2}$ ° W. 56 Chs. dist. - Stump of Orig. tree.Oak 15" in " " S. 21 $\frac{1}{2}$ ° E. 67 " " " " " "Fir 22" " " " S. 19 $\frac{1}{2}$ ° E. 798 " " " " " "Fir 14" " " " S. 85 $\frac{1}{2}$ ° W. 436 " " " " " "

Witnessed by H.M. Price - Oct. 27, 1917.

C.S. No. 233

The $\frac{1}{4}$ Sec. Cor. between Secs. 18 & 19 - T. 11 S., R. 6 W.

Set stone 4" X 7" X 14" - 14" below surface - Stone 5" X 8" X 14" on top + on top. S. S. E. side

Fir 36" ~~5 1/2~~ in diam. bears S. 50° W. 70 Chs. dist. (685) Orig

" 24" " " " N. 77° W. 131 " " " " "

Oct. 27, 1917

"

The $\frac{1}{4}$ Sec. Cor. between Secs. 19 & 24 on W. bdy Sec. 19 - T. 11 S., R. 6 W.

Set stone - dimensions not noted - 65 on top.

Maple 6" in diam. bears S. 35° E. .04 Chs. dist. Orig tree.

Fir 98" " " " S. 12° W. .617 " " " " "

Fir 48" " " " N. 50° E. 650 " " " " "

Oct. 19, 1917

"

The N. W. Corner of The Heirs of Stephen King D.L.C. Nos. 43 & 70

T. 11 S., R. 6 W. & T. 11 S., R. 7 W.

Set Stone 12" X 14" X 30" marked C.S. + on top. From Which

Fir 20" in diam. bears N. 18 $\frac{1}{2}$ ° W. 248 Chs. dist.Fir 9" " " " S. 25 $\frac{1}{2}$ ° E. 504 " " " " "

Oct. 20, 1917

"

The N. E. Corner of The Heirs of Steven King. D.L. C. Nos. 43 & 70

T. 11 S., R. 6 & 7 W.

Set Stone 5" X 14" X 7" marked C.S. on side & 0 in top.

Fir "36" 003 in diam. bears S. 46° W. .09 Chs. dist. (025) Orig Tree.

Oak 15" " " " N. 69° W. 550 " " " " "

Oak 14" " " " N. 8 $\frac{1}{2}$ ° W. 508 " " " " "

Oct. 20, 1917.

S.S. No. 227 Cont

The $\frac{1}{4}$ Sec. Cor. between Secs. 13 & 18. On West Bdy. T. 10 S., R. 6 W.Set $\frac{1}{4}$ " X $\frac{1}{4}$ " 42" iron bar

North rail of Valley & Siletz R.R. bears South 4227 Chs. dist.

A. Casting W.C. bears N. 10° 4' E. 5.027 Chs. dist.

A. White Fir. 16" " N. 13 $\frac{1}{2}$ ° E. 5.000 " " " " "Note - This B.T. is marked facing above casting or W.C. and bears N. 77 $\frac{1}{2}$ ° W. 421 Chs. dist.

Witness by W.S. Alcorn.

(4)

N. W. corner of Heirs of Stephne King DLC 43 and 70, Twp. 11-6 and 11-7

Reestablishment by Burt Wilkes

October 20, 1917

Set stone 12" x 14" x 30" marked C.S.+ on top
Fir 20" in diam bears N $18\frac{1}{2}^{\circ}$ W
Fir 9" in diam bears S $25\frac{1}{2}^{\circ}$ E

910

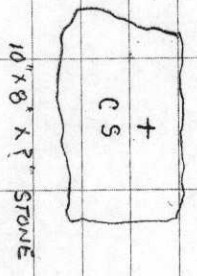
.248 chains (16.368')
.504 chains (33.264')

117843040

REMONUMENTING NW KING OLC 43

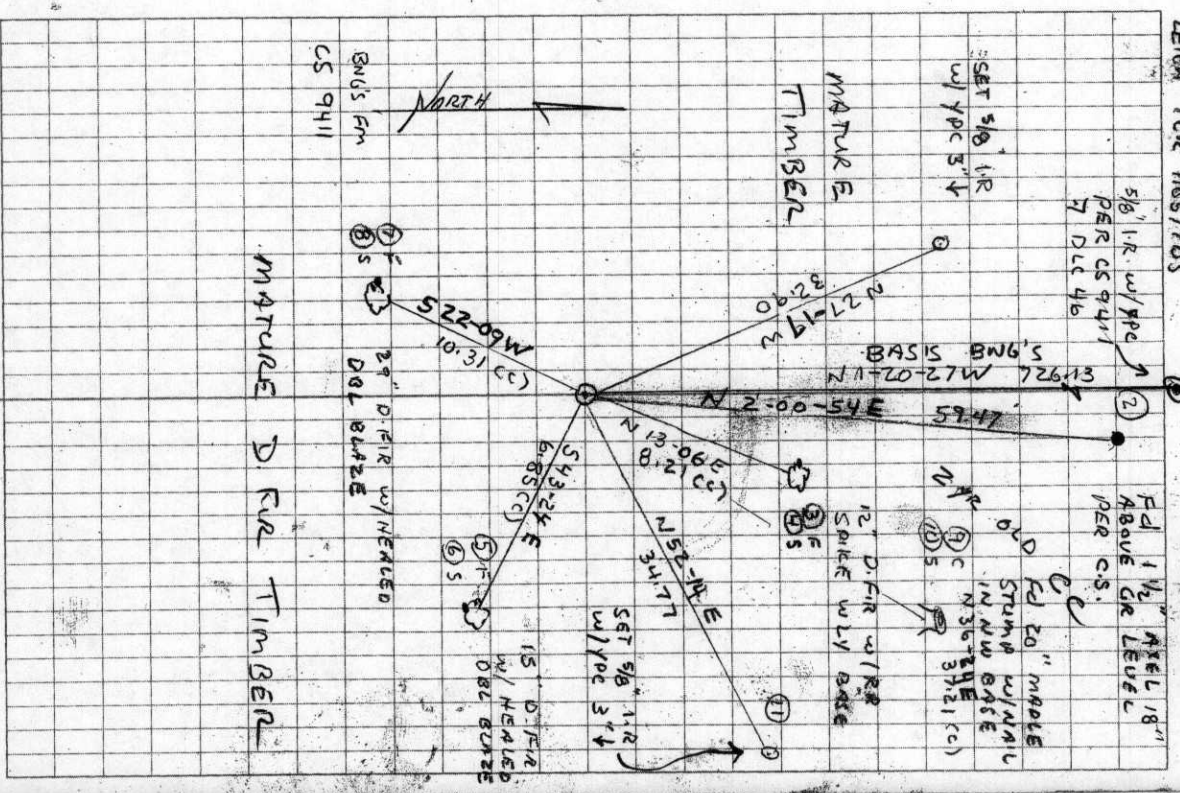
T 11S R 7W

FD 10" X 8" X 7" STONE FLUSH WITH
 GROUND MARKED " + CS " UNOBTAINED
 FIRMLY SET - HELD FOR COR. POSITION
 NO GLO. OR CSRTS COULD BE
 FOUND. FD B.T.S BY N. SPUNKER
 HAS NO ~~FD~~ NO. NEW MONUMENT
 SET - REFERENCED AS SHOWN,
 STONE WAS SET BY B. WILKES
 IN 1917 BY PROPORTIONING PASSING
 CALLS FROM THE E LINE OF
 SECTION 24, 11-7.



COOL, P.O.
 45°E 29.8'N9
 LEVER TOR HOS/TOS

1/24/06 23/65
 D. DEAN
 B. RUTENACH



DATE 01/04/2006TOWNSHIP 11 SOUTH, RANGE 07 WEST, WILLAMETTE MERIDIAN; SECTION 24 CORNER N/A
DONATION LAND CLAIM HEIRS OF STEPHEN KING NO. 43 CORNER NORTHWESTCOMMON CORNER(S):

N/A

RECORDS (INFORMATION IN BOLD ITALICS IS COUNTY STAFFS' INTERPRETATION OF THE RECORD)

BASED ON EXTENSIVE RESEARCH AND RECOVERY OF EVIDENCE, THIS OFFICE HAS DETERMINED THAT MOST GENERAL LAND OFFICE SURVEYORS MEASURED TO THE FACE OF BEARING TREES.

- [01] GENERAL LAND OFFICE (GLO) NOTES BY L. A. DAVIS, D.S., DATED JUNE 18, 1857. SET A POST. MARKED A 12" FIR S85°30'E 540 LKS. (356.40 FT.).
- [02] COUNTY SURVEY NO. 608 (OLD NO. 233) FIELD NOTES (BOOK 24, PAGE 32) BY BURT WILKES, D.C.S., DATED OCTOBER 20, 1917. SET A 12"X14"X30" STONE MARKED "CS+". MARKED A 9" FIR S25 1/2°E 0.504 CHS. (33.264 FT.) SCRIBED "CS233BT" AND A 20" FIR N18 1/2°W 0.248 CHS. (16.368 FT.) SCRIBED "CS233BT".
- [03] CORNER RESTORATION BOOK 1, PAGE 129 BY BURT WILKES, D.C.S., DATED OCTOBER 20, 1917. SET A 12"X14"X30" STONE MARKED "CS+". MARKED A 9" FIR S25 1/2°E 0.504 CHS. (33.264 FT.) AND A 20" FIR N18 1/2°W 0.248 CHS. (16.368 FT.).
- [04] CORNER RESTORATION NO. 910. *TRANSCRIBED FORM RECORD [03] AND MAY CONTAIN ERRORS AND/OR OMISSIONS.*
- [05] COUNTY SURVEY NO. 611 (OLD NO. 263) FIELD NOTES (BOOK 23, PAGE 37) BY W. C. GALLOWAY, C.S., NO DATE GIVEN. FOUND STONE.
- [06] BENTON COUNTY MAP NO. 11-7-00012 BY W. C. GALLOWAY, C.S., DATED DECEMBER 4, 1917. STONE.
- [07] COUNTY SURVEY NO. 7600 BY FRED I. LEMKE, P.L.S., DATED JUNE 2, 1975. SET AXLE AS TEMPORARY CORNER.
- [08] COUNTY SURVEY NO. 9411 BY NORMAN D. SPRINGER, P.L.S., DATED MAY 6, 1999. FOUND A 12"X14"X7" STONE, MARKED "+CS" ON TOP. FOUND A 1 1/4" AXLE WITH FLANGE N01°58'E 59.50 FT. FROM STONE. FOUND A FIR STUMP (CSBT) N181/2°W 16.40 FT. 13" FIR N8°E 8.20 FT. TO RAILROAD SPIKE IN SW BASE. 20" MAPLE N33°E 37.20 FT. TO 5" NAIL IN NW BASE. 15" FIR S44°E 7.0 FT., SCRIBED "KING DLC BT". 30" FIR S23°W 9.9 FT., SCRIBED "DLC46 BT". SET 6 FT. STEEL FENCEPOST 1.0 FT. NORTH OF CORNER.

COMMENTS/LOCATION/ETC:NOTES:

THIS IS A MICROSOFT WORD 2000 DOCUMENT NAMED "17843040" CREATED FROM A BOILER PLATE DOCUMENT NAMED "HISTORY", WHICH HAS A STYLESHEET NAMED "CORNER" ATTACHED TO IT.

FIRM/AGENCY: BENTON COUNTY SURVEYOR'S OFFICE
ADDRESS: 360 S.W. AVERY AVE. CORVALLIS OR 97333; PH. 766-6821
RESEARCH BY: BERNARD S. ALTENBACH, ENGINEER/SURVEY TECH.
DATA ENTRY BY: SAME

SEE CORNER HISTORY FORM FOR RECORDS ETC.

CORNER RESTORATION FIELD BOOK NUMBER 23 PAGE(S) 65 DATE 01/24/2006
TOWNSHIP 11 SOUTH, RANGE 7 WEST, WILLAMETTE MERIDIAN; SECTION 24 CORNER NONE
DONATION LAND CLAIM HEIRS OF STEPHEN KING NO. 43 CORNER NORTHWEST
CONDITION REPORT ; REFERENCED OUT ; RENEWED XX; SURVEYED IN

LOCATION AND COMMENTS:

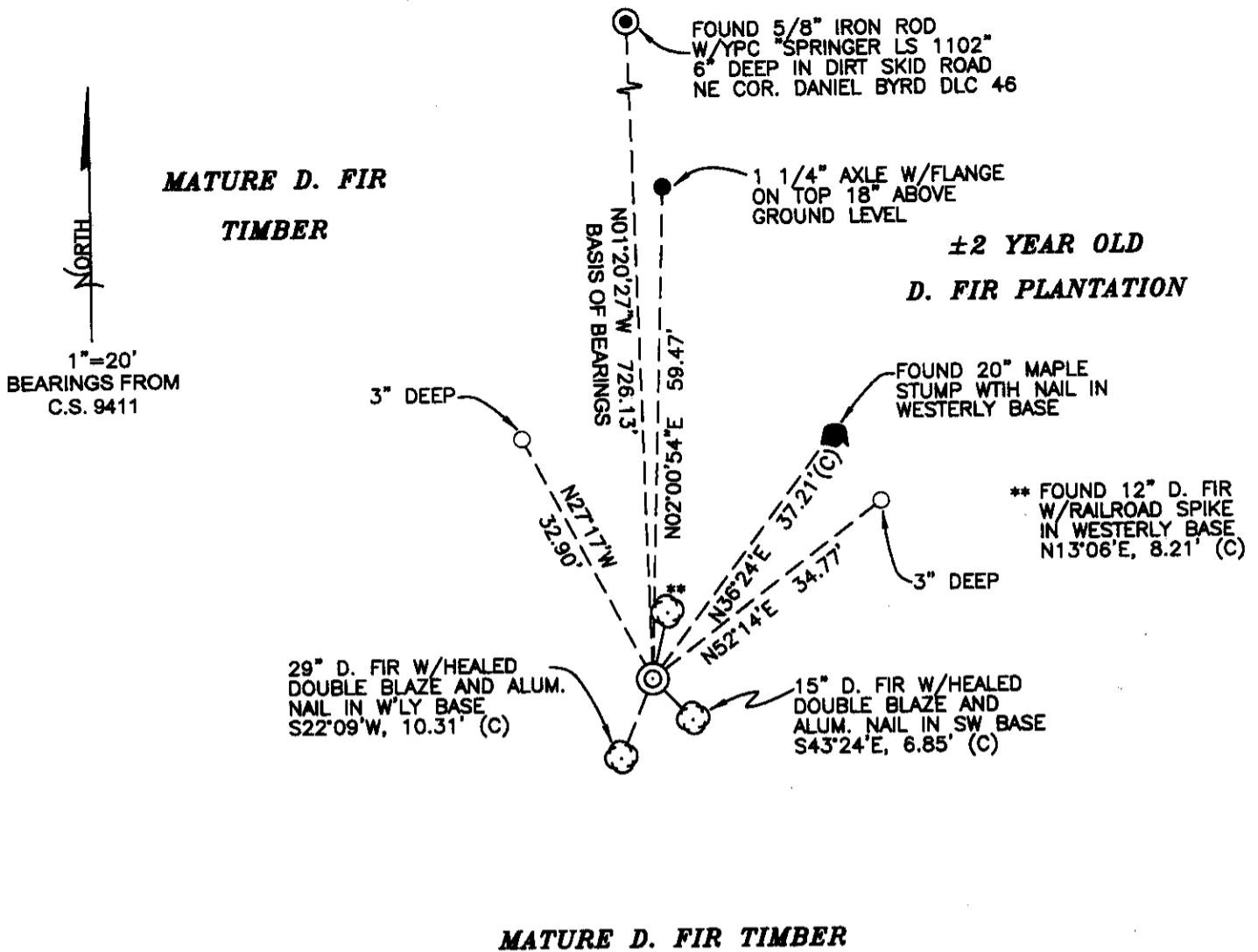
CORNER IS LOCATED ON A GENTLE SOUTH FACING SLOPE AT THE SOUTHWEST CORNER OF A 3 OR 4 YEAR OLD CLEAR CUT. TO REACH CORNER FROM THE JUNCTION OF HIGHWAY 20 AND LILLY HILL ROAD; TRAVEL WESTERLY ON HIGHWAY 20 FOR 0.42 MILES; THEN LEFT ON PRIVATE ROAD FOR 1.0 MILES TO SCALE SHACK AT ROCK PIT; THEN SOUTHERLY ALONG THE EAST SIDE OF ROCK PIT FOR 0.15 MILES TO 3 WAY JUNCTION AND PARK; THEN WALK UPHILL ON MIDDLE FORK FOR APPROXIMATELY 500 FEET; THEN WEST, CONTOURING THOROUGH MATURE TIMBER FOR ±800 FEET TO EDGE OF CLEAR CUT AND SWITCH BACK IN DIRT ROAD; THEN FOLLOW DIRT SKID ROAD SOUTHWESTERLY AND SOUTHERLY FOR APPROXIMATELY 0.1 MILES; THEN WEST ALONG CUTTING LINE FOR ±250 FEET TO CORNER. CORNER IS POOR FOR PREMARKING AND GPS CONTROL.

MONUMENTS AND ACCESSORIES FOUND (CONDITION AND SOURCE):

1. FOUND 8" X 10" X ?" STONE WITH "+ CS" ON TOP, FLUSH WITH GROUND LEVEL IN MOUND OF STONE FOR CORNER POSITION. (SET 12" X 14" X 30" STONE MARKED "CS +" PER RECORDS [02] AND [03]). (FOUND STONE PER RECORD [05]). (STONE PER RECORD [06]). (FOUND STONE, 12" X 14" X ?", MARKED "+ CS" PER RECORD [07]).
2. FOUND 20" MAPLE STUMP WITH NAIL IN WESTERLY BASE, N36°24'E, 37.21 FEET TO CENTER. DISTANCE MEASURED TO NAIL AND BEARING TO CENTER OF STUMP. (5" NAIL IN BASE OF 20" MAPLE, N33°E, 37.2 FEET PER RECORD [08])
3. FOUND 1 1/4" AXLE WITH FLANGE ON TOP, N2°00'54"E, 59.47 FEET. FLANGE IS 18" ABOVE GROUND LEVEL. (SET AXLE FOR TEMPORARY CORNER PER RECORD [07]). (FOUND 1 1/4" AXLE WITH FLANGE, N1°58'46"E, 59.50 FEET PER RECORD [08]).
4. FOUND 12" D. FIR WITH RAILROAD SPIKE IN SOUTHWEST BASE, N13°06'E, 8.21 FEET. DISTANCE MEASURED TO SPIKE AND BEARING TO CENTER OF TREE. (RAILROAD SPIKE IN SW BASE OF 13" FIR, N8°E, 8.2 FEET PER RECORD [08]).
5. FOUND 15" D. FIR WITH HEALED DOUBLE BLAZE, S43°24'E, 6.85 FEET TO CENTER. SET ALUMINUM NAIL IN SOUTHWEST BASE FOR DISTANCE MEASUREMENT. (15" FIR, S44°E, 7.0 FEET, SCRIBED "KING DLC BT" PER RECORD [08]).
6. FOUND 29" D. FIR WITH HEALED DOUBLE BLAZE, S22°09'W, 10.31 FEET TO CENTER. SET ALUMINUM NAIL IN WESTERLY BASE FOR DISTANCE MEASUREMENT. (30" FIR, S23°W, 9.9 FEET, SCRIBED "DLC 46 BT" PER RECORD [08]).
7. FOUND 5/8" IRON ROD WITH YELLOW PLASTIC, 6" DEEP IN SKID ROAD, N1°20'27"W, 726.13 FEET AT THE NORTHEAST CORNER OF THE DANIEL BYRD DLC NO. 46. **BASIS OF BEARINGS FOR THIS RESTORATION.** (SET 5/8" X 30" IRON ROD WITH YELLOW PLASTIC CAP MARKED "SPRINGER "LS 1102", N1°20'27"W, 726.20 FEET PER RECORD [08]).

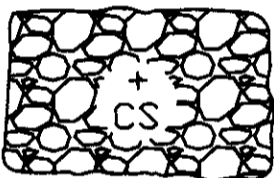
MONUMENT SET (PROCEDURES AND DESCRIPTION):

THE FOUND STONE AS DESCRIBED ABOVE WAS POSITIONED AND SET IN RECORD [02] (C.S. 608) BY HOLDING PASSING GLO CALLS (4.50 CHAINS NORTH AND 8.25 CHAINS WEST OF THE SE CORNER OF SECTION 24) PER DONATION LAND CLAIM NO. 43 (HEIRS OF STEPHEN KING). NO EVIDENCE REMAINS OF THE GLO BEARING TREE OR COUNTY SURVEYOR'S BEARING TREES PER RECORD [02]. STONE WAS FOUND UNDISTURBED AND FIRMLY SET. NO NEW MONUMENT WAS SET. HELD THE "+" ON STONE FOR THE TRUE CORNER POSITION AND REFERENCED AS SHOWN ON PAGE 2 OF 2. SET 6 ORANGE CARSONITE "SURVEY MARKER" POST 1 FOOT WEST OF CORNER STONE.



MATURE D. FIR TIMBER

MONUMENT DETAIL



10" X 8" STONE W/" + & CS"

LEGEND

- SET 5/8" X 30" REBAR WITH YELLOW PLASTIC CAP MKD "BENTON COUNTY SURVEYOR"
- FOUND MONUMENT AS NOTED
- (F) MEASUREMENT TO FACE
- (C) MEASUREMENT TO CENTER
- ⊙ GOVERNMENT MONUMENT SET AS SHOWN
- ⊙ GOVERNMENT MONUMENT FOUND AS SHOWN
- ⊙ BEARING TREE AS NOTED
- ⊙ STUMP OF BEARING TREE AS NOTED

NEW ACCESSORIES:

1. SET REBAR (SEE LEGEND) 3" BELOW GROUND LEVEL, N27°17'W, 32.90 FEET.
2. SET REBAR (SEE LEGEND) 3" BELOW GROUND LEVEL, N52°14'E, 34.77 FEET.

NOTES:

COMPASS DECLINATION IS 20° EAST. ALL MEASURED DISTANCES AND BEARINGS ARE TO THE CENTER OF THE OBJECT, UNLESS OTHERWISE NOTED. ALL BEARING TREES ARE PAINTED AND HAVE A B.T. TAG ATTACHED, FACING THE CORNER UNLESS OTHERWISE NOTED. ALL NEW BEARING TREES HAVE A PLASTIC WASHER (STAMPED "BENTON COUNTY SURVEYOR CORNER RESTORATION") ATTACHED (BY ALUMINUM NAIL) TO THE FACE, BELOW THE "BT" FOR DISTANCE AND ANGLE MEASUREMENT UNLESS OTHERWISE NOTED. THE DRAWING IS FROM AUTOCAD RELEASE 2002.

THIS RESTORATION WAS PERFORMED AT THE DIRECTION AND APPROVAL OF THE BENTON COUNTY SURVEYOR, DS

REGISTERED
PROFESSIONAL
LAND SURVEYOR

3/9/06 *David M. Dean*

OREGON
JULY 13, 1984
DAVID M. DEAN
2090

FIRM/AGENCY: BENTON COUNTY SURVEYOR'S OFFICE
ADDRESS: 360 S.W. AVERY AVE. CORVALLIS OR 97333; PH. 766-6821
PRESENT: DAVID M. DEAN, P.L.S. AND BERNIE ALTENBACH, SURVEY TECH.
EQUIPMENT: LEICA TCR 1105 W/TDS ONBOARD

RENEWAL DATE: 12/31/07