

CORNER FILE TRACKING

H:\Survey\Corners\Misc\Filetrac2.doc

06/15/2003

CORNER NUMBER
117845010

STEP	HISTORY()	RESTORATION()
Form Prepared, DB	3/21/08	4/8/08
Field Inspection, DB	4/8/07	4/8/07
Form Checked, DB	4/24/07	4/24/07
Form Edited, DB	4/24/07	4/24/07
Form Signed, DB	4/24/07	4/24/07
Counter Index	4/8/07	4/8/07
GIS Index	4/10/07	4/10/07
Authorize Payment, DB	_____	_____
Archive Digital Files	4/29/07	4/29/07
Collect Documents	NONE	NONE
Scanned	4/30/08	4/30/08
Copy For Filming	4/29/07	4/29/07
Filed, DB		
Finish index (count unit)	4/8/07	4/8/07
Filmed (Archived), DB		
Document No's to Andrew		

(DB) = Entry needed in database (Access).

COMMENTS:

CORNER DETERMINED TO BE LOST - SET ON SEC. LINE BETWEEN
1/4 14/13 AND N 1/16 14/13 AT RECORD GLO DIST OF 11.57 CHS
N OF 1/4 COR.

117845010

DATE 03/21/2008

TOWNSHIP 11 SOUTH, RANGE 7 WEST, WILLAMETTE MERIDIAN; SECTION 13 CORNER NONE
 DONATION LAND CLAIM JAMES W. VANDERPOOL NO. 45 CORNER NORTHEAST

COMMON CORNER(S).

POINT ON NORTH LINE WILLIAM BLODGET DLC NO 40
 POINT ON LINE BETWEEN SECTIONS 13 AND 14

RECORDS (INFORMATION IN BOLD ITALICS IS COUNTY STAFFS' INTERPRETATION OF THE RECORD)

BASED ON EXTENSIVE RESEARCH AND RECOVERY OF EVIDENCE, THIS OFFICE HAS DETERMINED THAT MOST GENERAL LAND OFFICE SURVEYORS MEASURED TO THE FACE OF BEARING TREES

[01] GENERAL LAND OFFICE (GLO) NOTES OF THE JAMES VANDERPOOL DLC NO 45 BY L A DAVIS, D S , DATED 1857 *EAST ON THE NORTH BOUNDARY LINE CLAIM 45 . . . INTERSECT THE LINE BETWEEN SECTIONS 13 AND 14 WHERE I SET A POST AND A STONE 12 IN. LONG 8 IN. WIDE 5 IN. THICK FOR NE CORNER TO CLAIM 45. MADE A MOUND AND TRENCH AS PER INSTRUCTIONS. A WHITE OAK 10 IN. DIA. BEARS S7°W 429 LINKS DIST. JAMES VANDERPOOLS HOUSE BEARS S34°W.*

NOTES

THIS IS A MICROSOFT WORD 2003 DOCUMENT NAMED "17845010" CREATED FROM A BOILER PLATE DOCUMENT NAMED "HISTORY", WHICH HAS A STYLESHEET NAMED "CORNER" ATTACHED TO IT

FIRM/AGENCY. BENTON COUNTY SURVEYOR'S OFFICE
ADDRESS: 360 S W AVERY AVE CORVALLIS OR 97333, PH 766-6821
RESEARCH BY. DAVID M DEAN, P L S
DATA ENTRY BY: SAME

BENTON COUNTY CORNER RESTORATION FORM, PAGE 1 OF 2, 117845010R1**SEE CORNER HISTORY FORM FOR RECORDS ETC.**

CORNER RESTORATION FIELD BOOK NUMBER 26 PAGE(S) 39 DATE 04/08/2008
 TOWNSHIP 11 SOUTH, RANGE 7 WEST, WILLAMETTE MERIDIAN, SECTION 13 CORNER NONE
 DONATION LAND CLAIM JAMES VANDERPOOL NO. 45 CORNER NORTHEAST
 CONDITION REPORT ; REFERENCED OUT ; RENEWED XX; SURVEYED IN

LOCATION AND COMMENTS.

CORNER IS LOCATED ON A SOUTHERLY FACING SLOPE CLOSE TO THE NORTHEAST CORNER OF A ±3 YEAR OLD D FIR PLANTATION TO REACH CORNER FROM THE JUNCTION OF HIGHWAY 20 AND LILLY HILL ROAD, TRAVEL WESTERLY ON HIGHWAY 20 FOR 0 16 MILES, THEN RIGHT ON PRIVATE ACCESS ROAD (PASSING THROUGH LOCKED GATE) FOR 0 03 MILES TO 4 WAY INTERSECTION, THEN CONTINUE STRAIGHT FOR 0 47 MILES TO "Y" JUNCTION, THEN BEAR LEFT FOR 0 02 MILES TO "Y" JUNCTION, THEN BEAR LEFT FOR 0 51 MILES TO "Y" JUNCTION, THEN BEAR RIGHT FOR 0 05 MILES TO "Y" JUNCTION, THEN BEAR LEFT FOR 0 63 MILES TO END OF ROAD AND PARK, THEN WALK WESTERLY APPROXIMATELY 400 FEET TO A NORTH/SOUTH WOVEN AND BARBED WIRE FENCE, THEN NORTH ALONG FENCE FOR APPROXIMATELY 700 FEET TO CORNER CORNER IS 12 FEET SOUTH AND 5 FEET EAST OF THE NORTHEAST CORNER OF FENCE CORNER IS POOR FOR PREMARKING AND GPS CONTROL

MONUMENTS AND ACCESSORIES FOUND (CONDITION AND SOURCE):

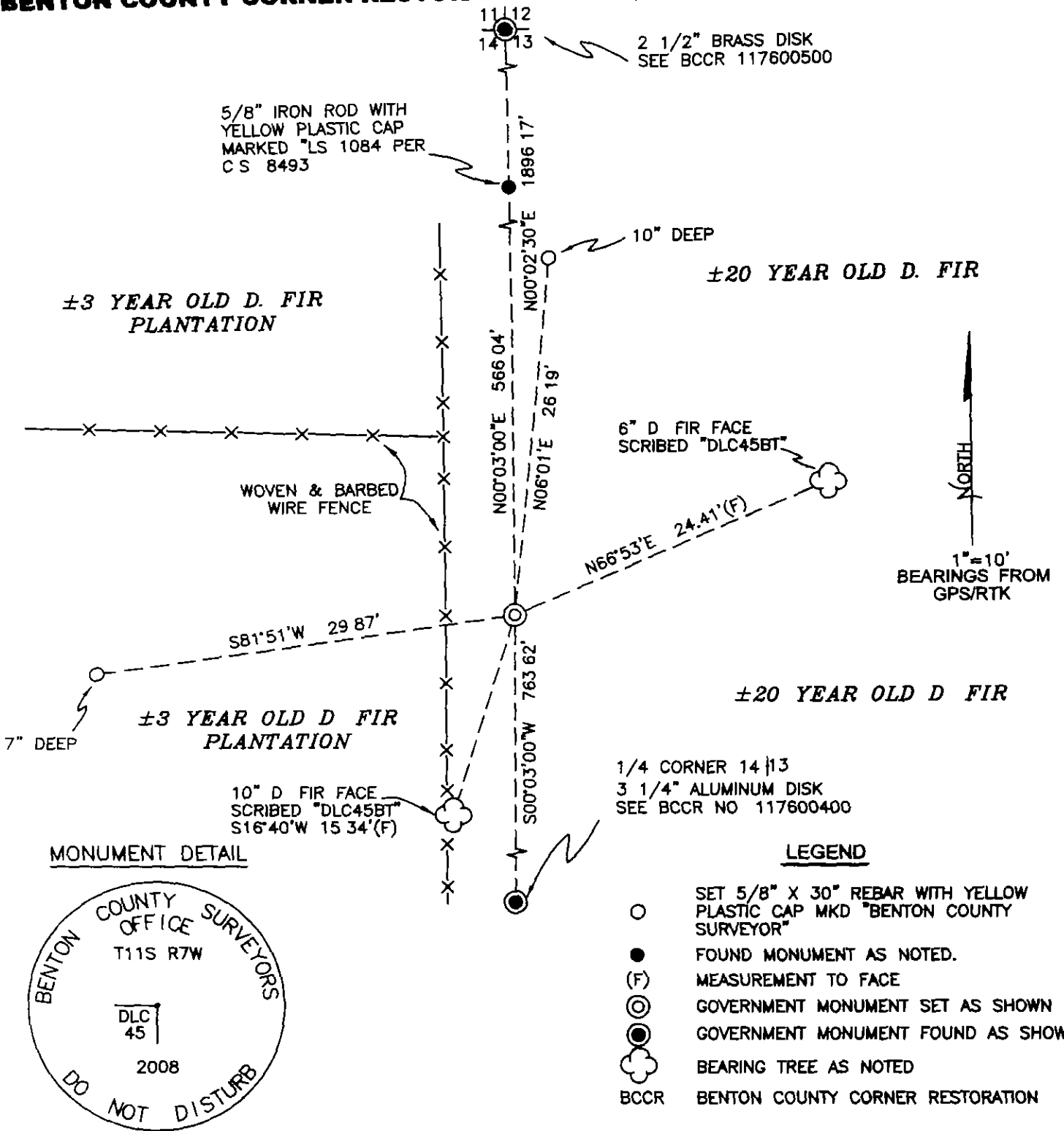
- 1 FOUND 3 1/4" ALUMINUM DISK AT THE 1/4 CORNER COMMON TO SECTIONS 13 AND 14, S00°03'00"W, 763 62 FEET SEE RESTORATION NO 117600440 (SOUTH 763 62 FEET PER RECORD [01])
- 2 FOUND 5/8" IRON ROD WITH YELLOW PLASTIC CAP AT THE NORTH 1/16 CORNER COMMON TO SECTIONS 13 AND 14, N00°03'00"E, 506 04 FEET AS SET IN COUNTY SURVEY NO 8493 AS A REPLACEMENT MONUMENT FOR 3/4" IRON PIPE SET IN COUNTY SURVEY NO 486
- 3 FOUND 2" BRASS DISK AT THE SECTION CORNER COMMON TO SECTIONS 11, 12, 13 AND 14, N00°02'30"E, 1896 17 FEET AS REMONUMENTED BY BENTON COUNTY RESTORATION NO 3801

MONUMENT SET PROCEDURES AND DESCRIPTION):

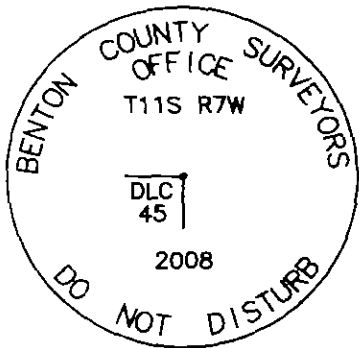
NO EVIDENCE COULD BE FOUND OF THE ORIGINAL GLO MONUMENT (STONE) OR ACCESSORY (10" OAK) AFTER A THOROUGH SEARCH OF THE AREA NO PAROL EVIDENCE COULD BE OFFERED BY ADJACENT OWNERS AND WE HAVE DETERMINED THE SUBJECT CORNER TO BE LOST A CALCULATED POSITION WAS DETERMINED AS FOLLOWS

- 1 HELD THE SECTION LINE BETWEEN SECTIONS 13 AND 14 PER RECORD [01] CALLS
- 2 HELD RECORD DISTANCE FROM THE 1/4 CORNER COMMON TO SECTIONS 13 AND 14 OF 11 57 CHAINS (763 62 FEET) PER RECORD [01]

WE BELIEVE THIS TO BE THE BEST RESOLUTION TO POSITION THIS LOST CORNER, AS IT USES THE NEAREST CONTROLLING CORNER (1/4 CORNER COMMON TO SECTIONS 13 AND 14) AND A POINT ON THE CALLED SECTION LINE AT SAID CALCULATED POSITION, SET A 2" X 31 1/2" GALVANIZED IRON PIPE WITH A 3 1/4" ALUMINUM DISK CONCRETED IN THE TOP, 2" BELOW GROUND LEVEL AND MARKED AS SHOWN ON PAGE 2 OF 2 SET A 6 FOOT ORANGE CARSONITE "SURVEY MARKER" POST 0 5 FEET NORTH OF NEW MONUMENT



MONUMENT DETAIL



LEGEND

- SET 5/8" X 30" REBAR WITH YELLOW PLASTIC CAP MKD "BENTON COUNTY SURVEYOR"
- FOUND MONUMENT AS NOTED.
- (F) MEASUREMENT TO FACE
- ⊙ GOVERNMENT MONUMENT SET AS SHOWN
- ⊙ GOVERNMENT MONUMENT FOUND AS SHOWN
- ☼ BEARING TREE AS NOTED
- BCCR BENTON COUNTY CORNER RESTORATION

3 1/4" ALUMINUM DISK

NEW ACCESSORIES:

- 1 SET REBAR (SEE LEGEND) 10" BELOW GROUND LEVEL N06°01'E, 26 19 FEET.
- 2 SET REBAR (SEE LEGEND) 7" BELOW GROUND LEVEL S81°51'W, 29 87 FEET
- 3 6" D FIR FACE SCRIBED "DLC45BT" N66°53'E, 24.41 FEET TO FACE. SET ALUMINUM NAIL AND PLASTIC WASHER BELOW SCRIBES FOR DISTANCE AND ANGLE MEASUREMENT
- 4 10" D FIR FACE SCRIBED "DLC45BT" S16°40'W, 15 43 FEET TO FACE SET ALUMINUM NAIL AND PLASTIC WASHER BELOW SCRIBES FOR DISTANCE AND ANGLE MEASUREMENT

NOTES:

COMPASS DECLINATION IS 20° EAST ALL MEASURED DISTANCES AND BEARINGS ARE TO THE CENTER OF THE OBJECT, UNLESS OTHERWISE NOTED ALL BEARING TREES ARE PAINTED AND HAVE A BT TAG ATTACHED, FACING THE CORNER UNLESS OTHERWISE NOTED ALL NEW BEARING TREES HAVE A PLASTIC WASHER (STAMPED "SURVEYOR MARKER DO NOT REMOVE") ATTACHED BY AN ALUMINUM NAIL TO THE FACE, BELOW THE "BT" FOR DISTANCE AND ANGLE MEASUREMENT UNLESS OTHERWISE NOTED THE DRAWING IS FROM AUTOCAD RELEASE 2008

THIS RESTORATION WAS PERFORMED AT THE DIRECTION AND APPROVAL OF THE BENTON COUNTY SURVEYOR *[Signature]*

REGISTERED PROFESSIONAL LAND SURVEYOR

4/24/08 *David M. Dean*

OREGON
JULY 13, 1984
DAVID M DEAN
2090

FIRM/AGENCY: BENTON COUNTY SURVEYOR'S OFFICE
ADDRESS: 300 SW AVERY AVE. CORVALLIS, OR 97333, PH 766-6821
PRESENT: DAVID M DEAN, P.L.S. AND BERNIE ALTENBACH, SURVEY TECH
EQUIPMENT: LEICA TCR 1105 WITH TDS ON BOARD

RENEWAL DATE: 12/31/09

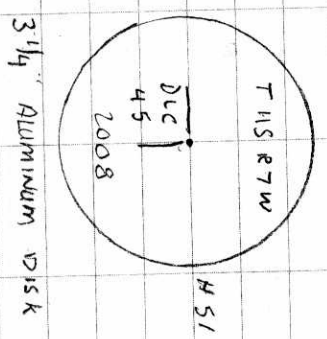
117845010

REMOVING NE JAMES VANDERPOOL

DLC 45 THIS RTW

GRABER HAS NO RECOVERY HISTORY. MADE EXTENSIVE SEARCH FOR 6 LO BT AND STONE MON. WITHOUT SUCCESS. SET COR AT CALC. POSITION 1/5. 11.57 CNS N OF 1/4 14/13 ON SEC. LINE PER GLO NOTES. AT CALC. POSITION SET 2"x3 1/2" G.I.P. W/3 1/4" ALUM. DISK CONC. IN TOP 4" BELOW GROUND LEVEL AND MKD AS SHOWN SET 6' ORANGE CARBONITE "SURVEY MARKER" POST 6 5' W OF NEW MON.

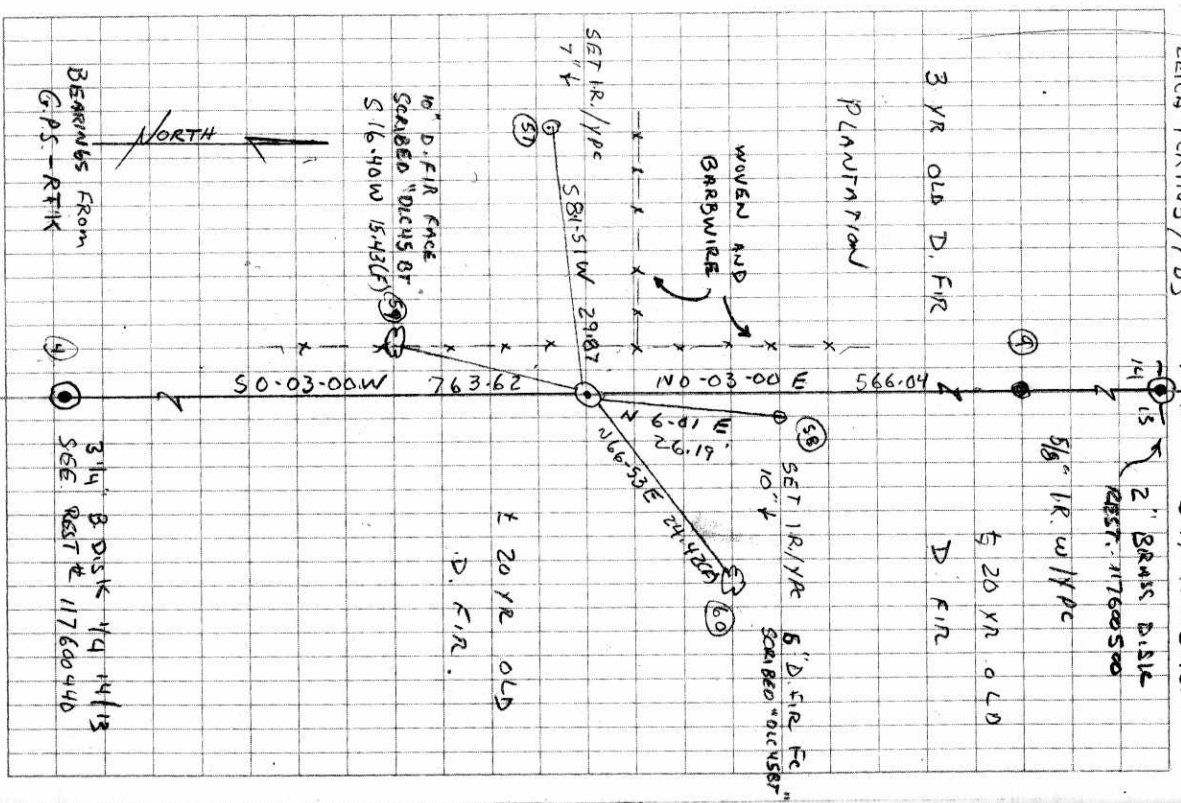
2-5-55 55) SET HT
2-5-56 56) " "



COOL, CUDY, LT RAIN
41°F, 29.7" H₁
LEICA TR1105/TDS

4/8/08 26/39

D. DEAN
B. ALTEUBACH



BEARINGS FROM
GPS-RTK

3 1/4\"/>