

SCALED 1927 MAP FROM GREENBERRY QUAD.

LAT. N. 44° 20' 33"

LONG. W 123° 21' 07"

T12S
R5W R5W
36 / 31
1.6
T13S

CORNER HISTORY		T 12 S, R 5 W		SECTION 31 D.L.C.	CORNER SW CORNER	# 100100
NO.	DATE	SOURCE	SURVEYOR	MONUMENTS AND ACCESSORIES	COMMENTS	
①	5/51	ORIG. G.L.O.	G.W. HYDE	SET POST @ 4 OAK B.T.'S		1
						2
						3
						4
						5
						6
						7
						8
						9
						10
						11
						12
						13
						14
						15
						16
						17
						18
						19
						20
						21
						22
						23
						24
						25
						26
						27
						28
						29
						30
						31

TOWNSHIP 12 SOUTH, RANGE 5 WEST, WILLAMETTE MERIDIAN; SECTION 31 CORNER SW
DONATION LAND CLAIM _____ CORNER _____

COMMON CORNER(S):

THE SOUTHEAST CORNER OF SECTION 36, IN TOWNSHIP 12 SOUTH, RANGE 6 WEST.
THE NORTHEAST CORNER OF SECTION 1, IN TOWNSHIP 13 SOUTH, RANGE 6 WEST.
THE NORTHWEST CORNER OF SECTION 6, IN TOWNSHIP 13 SOUTH, RANGE 5 WEST.

UPDATES AND REVISIONS:

CORNER RECORDS (PREVIOUS RENEWALS, SURVEYS, ETC.)

[01] ORIGINAL GLO SURVEY BY G.W. HYDE DATED MAY 5, 1853.

COMMENTS/LOCATION/ETC:

SEE CORNER RESTORATION FIELD BOOK NO. 15, PAGE 42 FOR MORE INFORMATION.
FOR G.P.S. CONTROL SEE COUNTY CONTROL REPORT NO. 8, STATION 94-10-11.

NOTES:

THIS IS A MICROSOFT WORD (VERSION 5.0) DOCUMENT NAMED "25100100" CREATED FROM A BOILER PLATE DOCUMENT NAMED "HISTORY", WHICH HAS A STYLESHEET NAMED "CORNER" ATTACHED TO IT.

FIRM/AGENCY: BENTON COUNTY SURVEYOR'S OFFICE
ADDRESS: 360 S.W. AVERY AVE. CORVALLIS OR 97333; PH. 757-6821
RESEARCH BY: CURTIS J. LIESENFELT/MARK E. ANDERSON
DATA ENTRY BY: MARK E. ANDERSON

BENTON COUNTY CORNER RESTORATION FORM, PAGE 1 OF 1, 125100100R1

SEE CORNER HISTORY FORM FOR RECORDS ETC.

CORNER RESTORATION FIELD BOOK NUMBER 15 PAGE(S) 63

DATE 10/3/1994

TOWNSHIP 12 SOUTH, RANGE 5 WEST, WILLAMETTE MERIDIAN; SECTION 31 CORNER SW

DONATION LAND CLAIM CORNER

CONDITION REPORT ___; REFERENCED OUT ___; RENEWED XX; SURVEYED IN ___

LOCATION AND COMMENTS:

THE CORNER IS LOCATED IN AN OAK GROVE APPROXIMATELY 700 FEET EASTERLY FROM A NORTH-SOUTH FENCE LINE, 500 FEET SOUTHERLY FROM AN EAST-WEST FENCE AND 1100 NORTHERLY FROM LLEWELLYN ROAD.

MONUMENTS AND ACCESSORIES FOUND (CONDITION AND SOURCE):

FOUND: 36" OAK, BEARS N 37° 02' E 16.42 FEET (14", N 38° 30' E 15.84 FEET FACE MEASURE AS PER RECORD [01]. CUT OPEN AND FOUND THE BACKCAST "S" AND SOME OTHER ILLEGIBLE SCRIBING. SET A PK NAIL AND BRASS WASHER IN THE NORTHWESTERLY BASE.

FOUND: 20" DEAD OAK SNAG WITH WHAT APPEARS TO BE A ROTTED OUT FACE, BEARS N 51° 52' W 7.3 FEET (16", N 49° 30' W 6.60 FEET FACE MEASURE AS PER RECORD [01]) DID NOT SET A NAIL AND WASHER FOR A DISTANCE REFERENCE POINT. NO OTHER RECORD EVIDENCE WAS RECOVERED.

MONUMENT SET (PROCEDURES AND DESCRIPTION):

SET: 2" INSIDE DIAMETER X 36" LONG IRON PIPE WITH A 3 1/4" BENTON COUNTY BRASS CAP, STAMPED AS SHOWN AT RECORD DISTANCE FROM THE TWO RECOVERED BEARING TREES.

NEW ACCESSORIES:

A 19" OAK BEARS S 62° 43' W 42.00 FEET, FACED AND SCRIBED "T13S R6W S1 BT", SET A PK NAIL AND BRASS WASHER IN THE NORTH-NORTHWESTERLY BASE.

A 26" OAK BEARS N 26° 04' E 51.53 FEET, FACED AND SCRIBED "T12S R5W S31 BT", SET A PK NAIL AND BRASS WASHER IN THE WEST-SOUTHWESTERLY BASE.

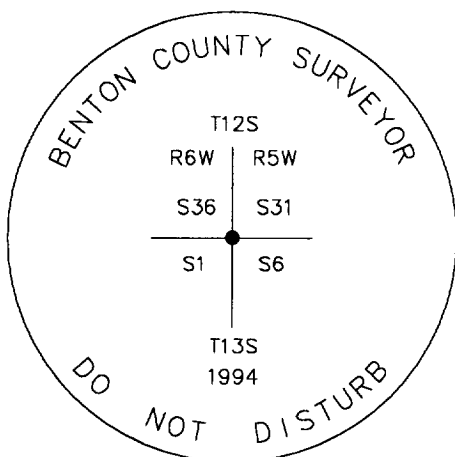
SET: REBAR (SEE NOTES) 4" BELOW GROUND SURFACE, BEARS N 55° 53' 45" E 32.25 FEET.

SET: REBAR (SEE NOTES) 4" BELOW GROUND SURFACE, BEARS N 3° 45' 45" E 32.76 FEET.

SET: REBAR (SEE NOTES) 1" BELOW GROUND SURFACE, BEARS N 63° 56' 35" W 31.50 FEET.

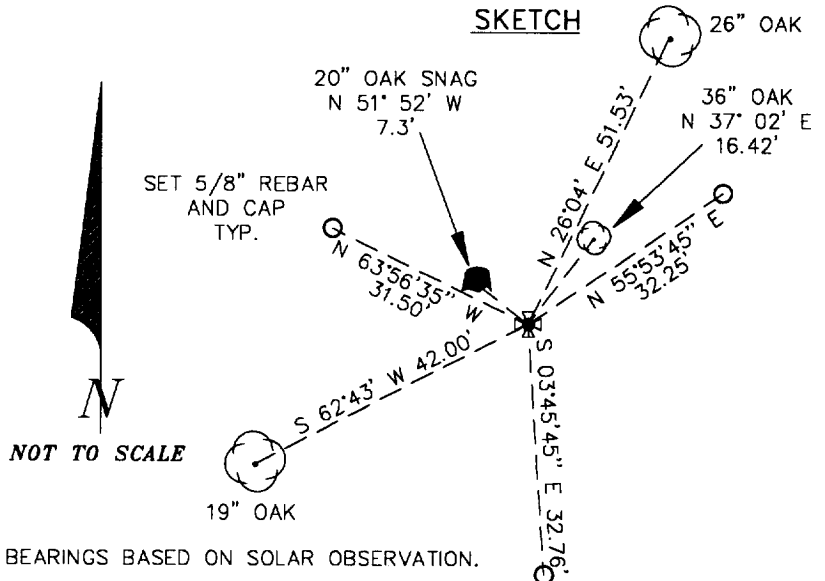
SET: ORANGE FIBERGLASS "SURVEY MARKER" POST 1 FOOT WESTERLY.

MONUMENT DETAIL



3 1/4" BRASS CAP

SKETCH



NOTES:

COMPASS DECLINATION IS 20° EAST. ALL MEASURED DISTANCES AND COMPASS BEARINGS ARE TO THE CENTER OF THE OBJECT, UNLESS OTHERWISE NOTED. ALL BEARING TREES ARE PAINTED AND HAVE A B.T. TAG ATTACHED, FACING THE CORNER UNLESS OTHERWISE NOTED. ALL NEW BEARING TREES HAVE A BRASS WASHER (STAMPED "BENTON COUNTY SURVEYOR") ATTACHED TO A SIDE CENTER UNLESS OTHERWISE NOTED. ALL LIVE BEARING TREES HAVE A PLASTIC WASHER (STAMPED "BENTON COUNTY SURVEYOR CORNER RESTORATION") ATTACHED TO THE BACK OF THE TREE OPPOSITE THE CORNER UNLESS OTHERWISE NOTED. ALL SET REBAR ARE 5/8" X 30" AND HAVE A YELLOW PLASTIC CAP (STAMPED "BENTON COUNTY SURVEYOR") ATTACHED TO THE TOP.

THIS DOCUMENT WAS NAMED AND CREATED IN A MANNER SIMILAR TO THE HISTORY FORM. THE NAME OF THE BOILER PLATE IS "MONUMENT". THE BORDER, STAMP AND SKETCH ARE FROM AUTOCAD RELEASE 12.

THIS RESTORATION WAS PERFORMED AT THE DIRECTION AND APPROVAL OF THE BENTON COUNTY/DEPUTY COUNTY SURVEYOR. RW

REGISTERED PROFESSIONAL LAND SURVEYOR

Curtis J. Liesenfelt

**OREGON
JULY 17, 1986
CURTIS J. LIESENFELT
2213**

LICENSE RENEWAL 12/31/1994

FIRM/AGENCY: BENTON COUNTY SURVEYOR'S OFFICE
ADDRESS: 360 S.W. AVERY AVE. CORVALLIS OR 97333; PH. 757-6821
SURVEYOR: CURTIS J. LIESENFELT
SURVEY CREW: RAY WILSON/MARK E. ANDERSON