

**125300140**

## CORNER FILE TRACKING

S:\Survey Corners\CORNERS\Templates\Filetrac2.doc  
10/04/2010

<b>CORNER NUMBER</b>
<b>125300140</b>

<b>STEP</b>	<b>HISTORY</b>	<b>RESTORATION</b>
Form Prepared, DB	1/11/2013	1/29/2013
Field Inspection, DB	1/16/2013	1/18/2013
Finish index (count unit)	1/11/2013	1/18/2013
Counter Index	1/18/2013	1/18/2013
GIS Index Form	2/05/2013	2/05/2013
Checked, DB	2/05/2013	2/05/2013
Form Edited, DB	2/05/2013	2/05/2013
Form Signed, DB	2/05/2013	2/05/2013
Authorize Payment, DB	—	—
Archive Digital Files	2/05/2013	2/05/2013
Collect Documents	2/05/2013	2/05/2013
PDF File	2/05/2013	2/05/2013
Copy For Filming	2/05/2013	2/05/2013
Scanned (pdf to laserfiche)	2/05/2013	2/05/2013
Filmed (Archived), DB		
Filed, DB		

(DB) = Entry needed in database (Access).

### COMMENTS:

DATE 01/11/2013TOWNSHIP 12 SOUTH, RANGE 5 WEST, WILLAMETTE MERIDIAN; SECTION 32 CORNER EAST 1/4  
DONATION LAND CLAIM JESSE OWNBY NO. 69 CORNER NORTHEAST**COMMON CORNER(S):**WEST 1/4 SECTION 33  
ON THE SOUTH LINE OF THE BENJAMIN CUTLER DONATION LAND CLAIM NO. 68**RECORDS (INFORMATION IN BOLD *ITALICS* IS COUNTY STAFFS' INTERPRETATION OF THE RECORD)**

BASED ON EXTENSIVE RESEARCH AND RECOVERY OF EVIDENCE, THIS OFFICE HAS DETERMINED THAT MOST GENERAL LAND OFFICE SURVEYORS IN BENTON COUNTY MEASURED TO THE FACE OF BEARING TREES.

- [01] GENERAL LAND OFFICE NOTES BY G.W. HYDE, D.S., DATED JANUARY 27, 1853. SET POST. DROVE CHARRED STAKE, MADE MOUND WITH TRENCHES.
- [02] GENERAL LAND OFFICE NOTES OF THE JESSE OWNBY DONATION LAND CLAIM (DLC) NO. 69 BY DENNIS HATHORN, D.S., DATED FEBRUARY 2, 1854. BEGINNING AT THE NORTHEAST CORNER WHICH IS THE QUARTER SECTION POST ON THE EAST BOUNDARY OF SECTION 32.
- [03] GENERAL LAND OFFICE NOTES OF THE BENJAMIN CUTLER DONATION LAND CLAIM NO. 68 BY DENNIS HATHORN, D.S., DATED FEBRUARY 3, 1854. FROM THE SOUTHWEST CORNER OF CUTLER CLAIM 68 ***N89°10'E, 37.90 CHAINS (2501.40 FEET) TO QUARTER SECTION POST ON EAST BOUNDARY OF SECTION 32, JESSE OWNBY'S NORTHEAST CORNER. SOUTHEAST CORNER OF CUTLER DONATION LAND CLAIM BEARS N89°10'E, 2.50 CHAINS (165.00 FEET).***
- [04] BENTON COUNTY SURVEY NO. 737 (OLD NO. 289) FIELD NOTES (FIELD BOOK 28, PAGE 18) BY W.C. GALLOWAY, C.S., DATED DECEMBER 14, 1920. SET ***1-1/2" PIPE S89°24'W, 2.50 CHAINS (165.00 FEET) OF SOUTHEAST CORNER OF BENJAMIN CUTLER CLAIM 68. CUTLER CORNER IS STONE.***
- [05] BENTON COUNTY SURVEY NO. 737 (OLD NO. 289) MAP BY W.C. GALLOWAY, C.S., DATED DECEMBER 18, 1920. ***1-1/2" PIPE. SOUTHEAST CORNER OF BENJAMIN CUTLER CLAIM 68 STONE 8" X 14" X 18" S89°45'E, 2.50 CHAINS (165.00 FEET).***
- [06] BENTON COUNTY CORNER RESTORATION BOOK NO. 1, PAGE 154, BY W.C. GALLOWAY, C.S., DATED DECEMBER 1920. SOUTHEAST CORNER OF BENJAMIN CUTLER DLC NO. 68. STONE 8" X 14" X 18" SET FOR CORNER. A ***1-1/2" PIPE AT THE 1/4 QUARTER SECTION CORNER BETWEEN SECTIONS 32 & 33 BEARS N89°45'W, 2.50 CHAINS (165.00 FEET). THE BEARING WAS PENCILLED OUT AND WRITTEN IN AS S89°24'W.***
- [07] BENTON COUNTY CORNER RESTORATION NO. 1335. TRANSCRIBED FROM RECORD [06] AND MAY CONTAIN ERRORS AND/OR OMISSIONS.
- [08] BENTON COUNTY CORNER RESTORATION BOOK NO. 1, PAGE 155, BY W.C. GALLOWAY, C.S., DATED DECEMBER 1920. SET A ***1-1/2" PIPE FROM DLC CORNER AND 1/4 CORNER 1 MILE EAST. A STONE AT THE SOUTHEAST CORNER OF CLAIM NO. 68 BEARS S89°45'E, 2.50 CHAINS (165.00 FEET) AND A 3/4" SHAFT BEARS S0°44'W, 30.381 CHAINS (2005.15 FEET). THE BEARING TO THE STONE WAS PENCILLED OUT AND WRITTEN IN AS N89°24'E. THE PHRASE "FROM DLC CORNER AND 1/4 CORNER 1 MILE EAST" WAS PENCILLED OUT.***
- [09] BENTON COUNTY CORNER RESTORATION NO. 1232. TRANSCRIBED FROM RECORD [08] AND MAY CONTAIN ERRORS AND/OR OMISSIONS.
- [10] BENTON COUNTY MAP NO. 13-5-00004 BY W.C. GALLOWAY, C.S., DATED DECEMBER 18, 1920. ***1-1/2" PIPE. SOUTHEAST CORNER OF BENJAMIN CUTLER CLAIM 68 STONE 8" X 14" X 18" N89°24'E, 2.50 CHAINS (165.00 FEET) ON CLAIM LINE, 0.038 CHAINS (2.51 FEET) NORTH OF CENTER LINE OF SECTION.***
- [11] BENTON COUNTY MAP NO. 12-5-00045, NO DATE OR DRAFTSMAN GIVEN. CORNER NOT DESCRIBED. ***S89°03'W, 2.499 CHAINS (164.93 FEET) OF SOUTHEAST CORNER OF BENJAMIN CUTLER CLAIM 68.***
- [12] BENTON COUNTY SURVEY NO. 1918 BY CURTIS C. HANSON, D.C.S., DATED JULY 1947. FOUND ***1" PIPE. STONE SOUTHEAST CORNER CLAIM 68 BEARS N89°01'42"E, 164.99 FEET (CALCULATED FROM TRAVERSE FIELD NOTES).***
- [13] BENTON COUNTY CORNER RESTORATION FORM 125300100R2 BY CURTIS J. LIESENFELT, P.L.S., DATED OCTOBER 21, 1998. FOUND ***1-1/2" INSIDE DIAMETER IRON PIPE WITH THE TOP 8" BENT S10°E, 0.20 FEET (TIED STRAIGHT PART) BEARING N0°43'25"E, 2655.20 FEET OF THE SOUTHEAST CORNER OF SECTION 32. PIPE IS 1.3 FEET EASTERLY OF THE NORTHEAST CORNER OF A WOVEN AND BARBED WIRE FENCE AND 4.5 FEET NORTHERLY OF THE WESTERLY END OF A 12" CONCRETE CULVERT.***
- [14] BENTON COUNTY SURVEY NO. 10070 BY LLOYD L. TOLBERT, P.L.S., DATED DECEMBER 1, 2005. NORTHEAST CORNER OF THE JESSE OWNBY DLC NO. 69, ***1-1/2" IRON PIPE N0°37'00"E, 2654.95 FEET OF THE SOUTHEAST CORNER OF SECTION 32.***
- [15] BENTON COUNTY SURVEY NO. 10553 BY TYLER B. PARSONS, P.L.S., DATED JULY 30, 2012. FOUND ***1-1/2" PIPE.***

FIRM/AGENCY: BENTON COUNTY SURVEYOR'S OFFICE

ADDRESS: 360 S.W. AVERY AVE. CORVALLIS OR 97333; PH. 766-6821

RESEARCH BY: DAVID L. MALONE, P.L.S.

DATA ENTRY BY: SAME

**BENTON COUNTY CORNER RESTORATION FORM, PAGE 1 OF 2, 125300140R2  
SEE CORNER HISTORY FORM FOR RECORDS ETC.**

CORNER RESTORATION FIELD BOOK NUMBER 29 PAGE(S) 34 DATE 01/18/2013

TOWNSHIP 12 SOUTH, RANGE 5 WEST, WILLAMETTE MERIDIAN; SECTION 32 CORNER EAST 1/4  
DONATION LAND CLAIM JESSE OWNBY NO. 69 CORNER NORTHEAST  
CONDITION REPORT     ; REFERENCED OUT     ; RENEWED X; SURVEYED IN     

**LOCATION AND COMMENTS:**

CORNER IS LOCATED ON THE WEST SIDE OF AND NEAR THE NORTH END OF A DIRT FARM ROAD ABOUT 4.5 FEET NORTH OF THE WEST END OF A 12" CONCRETE CULVERT UNDER SAID FARM ROAD AND ABOUT 0.6 FEET NORTH OF THE CENTER OF A 3" X 2-1/2" CHANNEL IRON STICKING 4.7 FEET OUT OF THE GROUND. TO REACH CORNER FROM THE INTERSECTION OF HIGHWAY 99W AND LLEWELLYN ROAD, DRIVE WESTERLY ALONG LLEWELLYN ROAD 1.93 MILES TO A FIELD APPROACH TO THE NORTH. TURN RIGHT ONTO DIRT FARM ROAD AND DRIVE 0.38 MILES TO END OF ROAD. CORNER IS GOOD FOR GPS CONTROL.

**MONUMENTS AND ACCESSORIES FOUND (CONDITION AND SOURCE):**

1. FOUND 1-1/4" X 3/32" INNER DIAMETER IRON PIPE WITH THE TOP 8" BENT SOUTHEASTERLY, FLUSH WITH GROUND LEVEL. DUG DOWN TO PLUMB PORTION OF IRON PIPE FOR CORNER POSITION.  
(POST, CHARRED STAKE, MOUND AND TRENCHES PER RECORD [01]).  
(POST PER RECORDS [02] AND [03]).  
(1-1/2" PIPE PER RECORDS [04] - [10], AND [13] - [15]).  
(1" PIPE PER RECORD [12]).
2. FOUND 3-1/4" BRASS DISK CEMENTED IN A 2" IRON PIPE, S0°44'00"W, 2655.24 FEET, FLUSH WITH GROUND LEVEL, AT THE SOUTHEAST CORNER OF SECTION 32, TOWNSHIP 12 SOUTH, RANGE 5 WEST, MARKED AS SHOWN IN BENTON COUNTY CORNER RESTORATION NO. 125300100R2. BASIS OF BEARINGS FOR THIS RESTORATION.  
(NORTH, 40.00 CHAINS [2640.00 FEET] PER RECORD [01]).  
(3/4" SHAFT BEARS S0°44'W, 40.236 CHAINS [2655.58 FEET] PER RECORDS [05] AND [10]).  
(3-1/4" BRASS DISK S0°43'25"W, 2655.20 FEET PER RECORD [13]).  
(3-1/4" BRASS CAP S0°37'00"W, 2654.95 FEET PER RECORD [14]).
3. FOUND 3/4" IRON SHAFT, S0°44'36"W, 2005.36 FEET, 9" BELOW GROUND LEVEL.  
(3/4" SHAFT BEARS S0°44'W, 30.381 CHAINS [2005.15 FEET] PER RECORDS [05] AND [08] - [10]).  
(5/8" PIPE WITH BOLT IN TOP S0°37'40"W, 2005.07 FEET PER RECORD [14]).
4. FOUND 2-1/2" ALUMINUM CAP RIVETED ON A 2" ALUMINUM PIPE, N89°22'32"E, 164.99 FEET, 3" ABOVE GROUND LEVEL AND SURROUNDED BY SEVERAL SMALL STONES. AT THE SOUTHEAST CORNER OF THE BENJAMIN CUTLER DONATION LAND CLAIM NO. 68, MARKED AS SHOWN ON PAGE 2 OF 2. THIS MONUMENT WAS SET AS PART OF AN ONGOING SURVEY BY TYLER PARSONS, P.L.S., WHICH HAS NOT YET BEEN FILED AND ASSIGNED A COUNTY SURVEY NUMBER.  
(POST, CHARRED STAKE AND TRENCH BEARS N89°10'E, 2.50 CHAINS [165.00 FEET] PER RECORD [03]).  
(STONE BEARS N89°24'E, 2.50 CHAINS [165.00 FEET] PER RECORDS [04] AND [06] - [09]).  
(STONE BEARS S89°45'E, 2.50 CHAINS [165.00 FEET] PER RECORD [05]).  
(STONE BEARS N89°24'E, 2.50 CHAINS [165.00 FEET] ON CLAIM LINE, 0.038 CHAINS [2.51 FEET] NORTH OF CENTER LINE OF SECTION PER RECORD [10]).  
(CORNER BEARS N89°03'E, 2.499 CHAINS [164.93 FEET] PER RECORD [11]).  
(STONE BEARS N89°01'42"E, 164.99 FEET CALCULATED PER RECORD [12]).

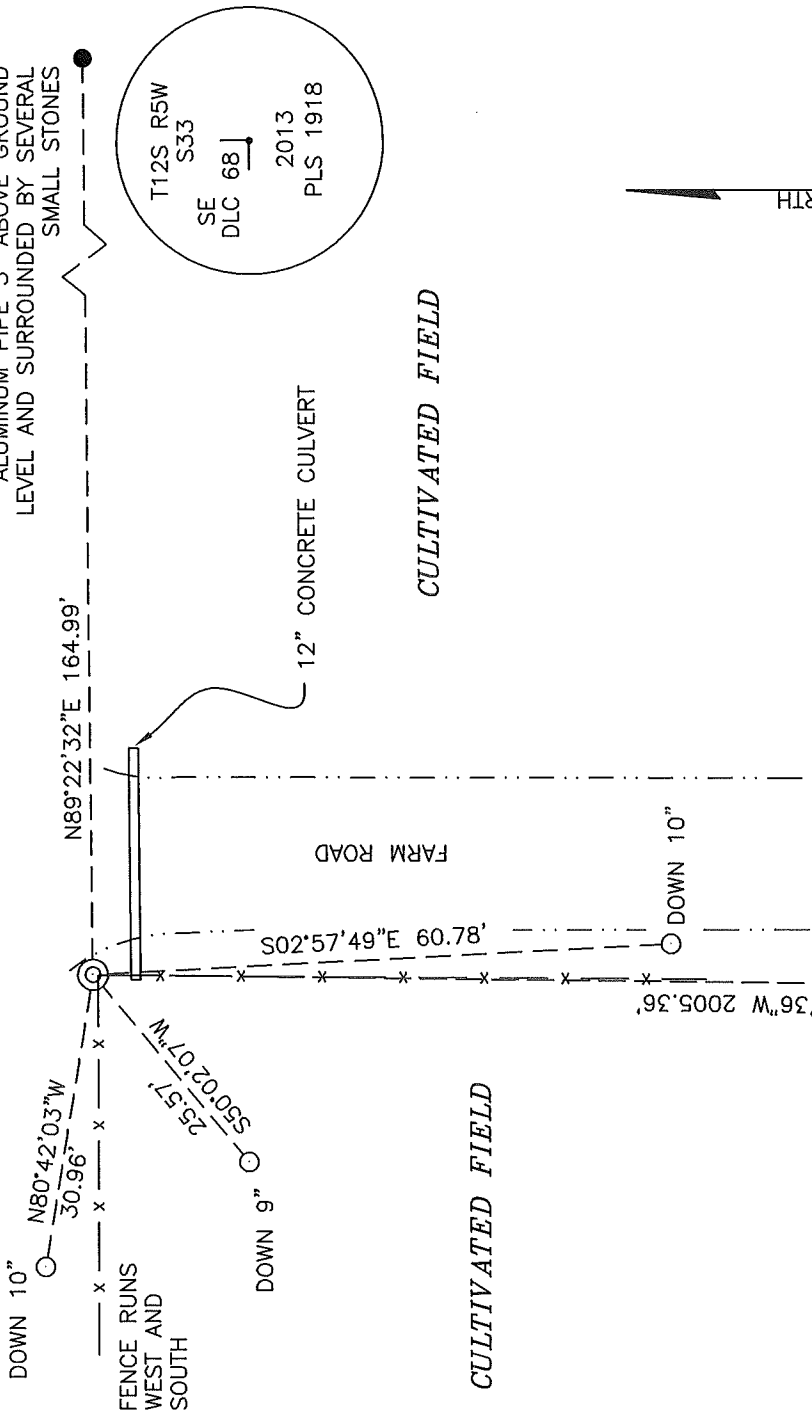
**MONUMENT SET (PROCEDURES AND DESCRIPTION):**

DID NOT FIND ORIGINAL GLO EVIDENCE. IT IS UNCLEAR FROM THE FIELD NOTES WHAT EVIDENCE WAS USED BY C.S. 737 TO POSITION THE 1-1/4" IRON PIPE, BUT AFTER 92 YEARS OF ACCEPTANCE AND USAGE IT REMAINS THE BEST AVAILABLE EVIDENCE OF THE CORNER POSITION. WE REMOVED THE BENT 1-1/4" IRON PIPE AND THE LOWER 25" OF THE PIPE WAS IN A PLUMB POSITION, THE CENTER OF WHICH WAS HELD FOR THE EXACT CORNER POSITION.

WE SET A 2" X 31-1/2" GALVANIZED IRON PIPE WITH A 3-1/4" BRASS DISK CONCRETED IN THE TOP, 2" BELOW GROUND LEVEL AND MARKED AS SHOWN ON PAGE 2 OF 2. REMOVED THE 1-1/4" IRON PIPE FROM THE AREA. SET A 6 FOOT ORANGE CARSONITE "SURVEY MARKER" POST 1.0 FEET NORTH OF NEW MONUMENT.

SOUTHEAST CORNER OF BENJAMIN CUTLER DONATION LAND CLAIM NO. 68  
2-1/2" ALUMINUM CAP RIVETED ON 2" ALUMINUM PIPE 3" ABOVE GROUND LEVEL AND SURROUNDED BY SEVERAL SMALL STONES

CULTIVATED FIELD

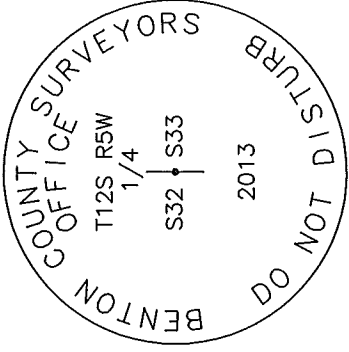


3/4" SHAFT PER C.S. 737  
DOWN 9"

500°44'36"W 2005.36'  
BASIS OF BEARINGS  
500°44'00"W 2655.24'

FOUND 3-1/4 BRASS DISK  
SOUTHEAST CORNER SECTION 32 PER  
CORNER RESTORATION 125300100R2

SET MONUMENT DETAIL



3-1/4" BRASS DISK

LEGEND

- SET 5/8" X 30" REBAR WITH YELLOW PLASTIC CAP MARKED "BENTON COUNTY SURVEYOR"
- FOUND MONUMENT AS NOTED.
- ⊙ GOVERNMENT MONUMENT SET AS SHOWN
- ⦿ GOVERNMENT MONUMENT FOUND AS SHOWN
- C.S. COUNTY SURVEY

NEW ACCESSORIES:

1. SET REBAR (SEE LEGEND) S02°57'49"E, 60.78 FEET AND 10" BELOW GROUND LEVEL.
2. SET REBAR (SEE LEGEND) S50°02'07"W, 25.57 FEET AND 9" BELOW GROUND LEVEL.
3. SET REBAR (SEE LEGEND) N80°42'03"W, 30.96 FEET AND 10" BELOW GROUND LEVEL.

NOTES:

COMPASS DECLINATION IS 20' EAST. ALL MEASURED DISTANCES AND BEARINGS ARE TO THE CENTER OF THE OBJECT, UNLESS OTHERWISE NOTED.

THIS RESTORATION WAS PERFORMED AT THE DIRECTION AND APPROVAL OF THE BENTON COUNTY SURVEYOR *glen*

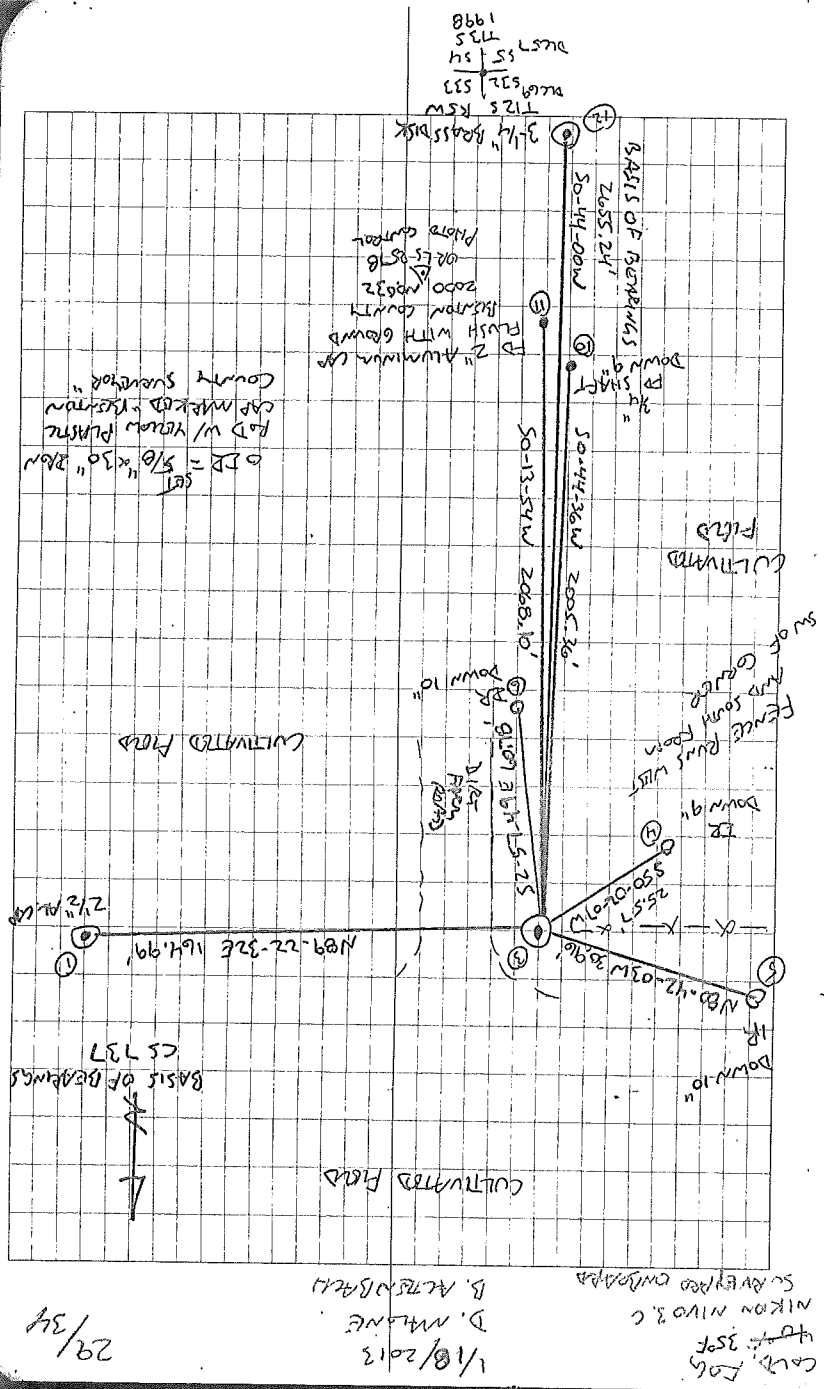
REGISTERED PROFESSIONAL LAND SURVEYOR

*2/05/2013 David L. Malone*

OREGON  
JANUARY 12, 1999  
DAVID L. MALONE  
51523

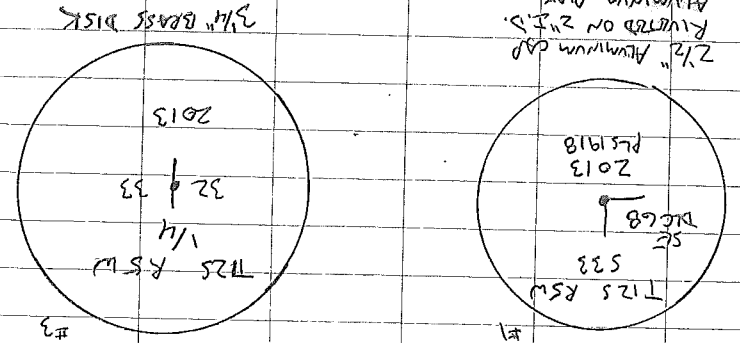
FIRM/AGENCY: BENTON COUNTY SURVEYOR'S OFFICE  
ADDRESS: 360 S.W. AVERY AVE. CORVALLIS, OR. 97333; PH. 766-6821  
PRESENT: DAVID L. MALONE, P.L.S. AND BERNARD ALTENBACH, SURVEY TECH.  
EQUIPMENT: NIKON NIV03.C WITH SURVEY PRO ONBOARD

RENEWAL DATE: 12/31/14



1/8/2013  
 D. M. LANE  
 B. A. TRENBATH  
 S. AVERED OMBAPA  
 CALD. FOG  
 44-359  
 NIKON N103.C  
 29/34

REMOVED ALUMINUM T125 R5W 32 & 33  
 ALSO NE CORNER D1C 68 AND ON SOUTH LINE D1C 68  
 FD 1 1/4" ID, IRON PIPE W/ TOP 8" BENT SOME ASSEMBLY  
 FLUSH W/ GROUND. CHANNEL UPON GHT POST ON  
 SW SIDE. REMOVED AND SET 2" X 3 1/2" G.I.P.  
 W/ 3/4" BRASS DISK CORNER IN TOP 2"  
 BELOW GROUND LEVEL AND MARKED AS SHOWN BELOW.  
 SET IN SAME POSITION AS VERTICAL PORTION OF  
 FD PIPE. SET 3 IRON REFERENCES AND TOP  
 SE CORNER OF D1C 68 AND SE CORNER OF SEC 32.  
 REMOVED BENT PIPE FROM AREA. SET TO CHANGE  
 "SURVEY MARKER" CAPSTONE POST 12" NORTH OF CORNER.  
 125300140  
 T125 R5W 32 & 33  
 D1C 68  
 SE  
 T125 R5W 533  
 PLS 1918  
 2013  
 32 & 33  
 1/4"  
 T125 R5W  
 2 1/2" ALUMINUM CAP  
 RIVERED ON 2" ID  
 ALUMINUM PIPE  
 3" ABOVE GROUND LEVEL  
 SURROUNDED BY STONES



- C.S. 288  
Witnesses as before  
1/4 Sec. corner between secs. 32 & 33 T. 12-5  
Set a 1 1/2" pipe ~~from D.L.C. cor. to M. east.~~  
A stone the SE. cor. of C1.68 bears S. 89° 45' E. 2.50 cks.  
A 3/4" shaft bears S. 0° 44' W. 30.381 cks.
- "  
W.C. to 1/4 sec. cor. between secs. 4 & 5, T. 13-5  
Set a 3/4" shaft 10 lks. N. from tree corner  
Oak 10" in dia. bears S. 60° 3/4' E. .253 cks.  
" 7" " " N. 72° W. .091 "
- C.S. 289  
W.C. Gallaway &  
C.E. Davis.  
W.C. to S.E. corner of Jesse Ownby D.L.C. # 57 T13-5  
Stone 14" x 12" x 10" in place which is 125' W. of true corner  
Oak 7" in dia. bears S. 19° E. .195 cks.  
" Stump 20" " S. 5 1/2° W. .13 " orig. stamp.  
" 18" " " N. 83 1/2° W. .43 " " tree.
- C.S. 289  
W.C. Gallaway &  
E.J. Lavelly &  
Geo. & C.E. Davis.  
Dec. 1920.  
Corner to secs. 32, 33, 4 & 5 Tps. 12 & 13 S. R. 5 W.  
Set a 3/4" shaft. Set from fences and other measurements  
A 3/4" shaft bears N. 0° 44' E. 9.855 cks.  
A 1/2" iron rod. N. 89° 53' W. 2.50 "
- C.S. #205 cont  
W.C. Gallaway &  
G.A. Holmes &  
E. Whitcomb  
Interior Corner Of Smiley Carter D.L.C. # 50, T10-4  
Set a 1" x 36" pipe from Oak stump 3" N. 57 1/2° E. .24.  
other trees gone.
- C.S. #32  
F.M. Wilkes &  
Robert H. Gallatly  
S.W. Cor. of Geo. E. Knowlton D.L.C. 70 T. 12-6.  
Set a Stone 15" x 12" x 15"  
Oak 30" in dia. bears N. 12° W. 3.99 cks. std.  
Fir 11" " " East .738 "
- C.S. #21  
F.M. Wilkes &  
Oct. 13, 1908  
checked and  
shaft set by  
W.C. Gallaway &  
Mar. 8, 1921.  
S.W. Cor. of Gallatin Adkins D.L.C. 43, T. 10-4  
Set 3/4" galv. pipe  
A 1/4" shaft South .300 cks.  
Oak 20" in dia. bears S. 26° W. .38 cks. std.
- C.S. #21  
set by F.M. W.C.  
Oct. 13, 1908  
The find to post  
& house  
by  
W.C. Gallaway &  
Mar. 8, 1921.  
N.W. of J. Q. Thornton D.L.C. 37 T. 10-4  
Set a bolt for corner.  
Oak post 6" x 6" N. 26° E. .060 cks.  
S.W. cor. " " N. E. .312 "  
Gen. " " North .268 "  
" " " South 1.075 "  
N.W. corner of House S.E. 1.225 "
- C.S. 21 & 277  
F.M. W.  
Referenced by W.C.E.  
March 14, 1921.  
S.E. corner of Gallatin Adkins D.L.C. 79, T. 10-3  
Stone already set 6' x 6' x 3'  
Walnut tree 4" in dia. bears S. 19° 35' E. .649 cks.  
" 3" " " S. 22° W. .840 "  
Oak 9" " " N. 4° 55' W. .576 "  
Fir 11" " " N. 51° 15' W. .840 "

$\frac{1}{4}$ -Section corner between sections 32 and 33, Twp. 12-5

Reestablishment by W. C. Galloway

Set a  $1\frac{1}{2}$ " pipe

A stone the S. E. corner of C1 68 bears N 89° 24' E 2.50 chains;

A  $\frac{3}{4}$ " shaft bears S 0° 44' W

Witnesses E. J. Lewellyn, George and C. E. Davis

December 1920

1232  
1467

30.381 chains