

C.S. 299
Nov. 26, 1928
Walter Reed.

S.E. Corner of Sec. 36 T.10 S. R. 5 W. W. M.
Set oak stake
Oak 16" in dia. bears N. 76° 30' W. 1.69 chs. standing
" 24" " " N. 86° E. 1.82 " stump
" 4" " " N. 32° W. .10 "

C.S. 137
by W.C. Galloway
and Army Engrs.
June 1942

Cor. to Secs. 20, 21, 28 & 29 T.12 S. R. 5 W. W. M.
Set a 1 1/4" pipe in low ground or slough
Ash 20" in dia. bears N. 12° W. .29 chs. stump and sprouts
Mkd. Oak 12" " " " N. E. .699 "
" 12" now 20" " S. 57 1/2° E. .78 " standing.
" Chittam 6" in dia. " S. 66 1/2° W. .603 "
S.W. Cor. of Alfred Rhinehart Cl. 73 bears. S. 86° 30' E. 13.150 chs.

C.S. 137
As above

S.W. Cor. of James W. Dunn Cl. 61 T. 12 S. R. 5 W. W. M.
Set a 3/4" iron rod
The most east N.E. Corner of Benj. Cutler bears N. 89° 55' E. 2.405 chs.
" N.E. " " " " Cl. 68 " N. 0° 29' E. 14.552 chs.

C.S. 137
as above

Most E. N.E. Cor. of Benj. Cutler Cl. 68 T. 12 S. R. 5 W. W. M.
Set 1/2" pipe, replaced a stake found at the fence corner.
The S.W. cor. of James W. Dunn Cl. 61 bears, S. 89° 55' W. 2.405 chs.
1/4" iron rod on claim line, S. 89° 55' E. 33.034 chains

C.S. 137
as above

Most N. N.E. Corner of Benj. Cutler Cl. 68 T. 12 S. R. 5 W.
Set an iron 1/4 sec. Cor. bet. 20 & 29 N. 30° W. 30' 30".
1/2" Pipe S. 0° 29' W. 29 feet
3/4" iron rod, S.W. Cor. of James W. Dunn Cl. 61, S. 0° 29' W. 14.552 chains
1" Pipe, S.E. of Nicholas Onby Cl. 62, N. 0° 0' 1/2" W. 9.283 "

C.S. 272
by W.C. Galloway &
V.M. Patterson and
C.B. Shaw
Nov. 23, 1945

1/4 Sec. Cor. bet. Secs. 23 & 24 T. 10 S. R. 7 W.
Set a 3/4" Galv. Iron pipe in root of fir
Fir 9" in dia. bears (now 24" stump) S. 7° E. .81 chs., good B.T.
" 12" " " (" 46") S. 62° 14' W. to nail in top 62 links.
Mkd. " 24" " " S. 57° 50' W. .892 chs.
" " 19" " " North .631 "

C.S. 105
by W.C. G.
April 15, 1946
V.M. Patterson
helped on survey

S.E. Corner of John Robinson D.L.C. No. 44 T. 11 S. R. 5 W.
Set a 1 1/2" x 30" shaft, stake print dim.
Oak 15" in dia. bears N. 83° 36' W. 5.49 chs. (Honey Bees in lower blow)
Oak 24" " " " N. 55 1/4° W. 9.63 " down.
Mkd. " 6" " " S. 12° 37' W. .359 " to cor. tree.

C.S. 317
by W.C. G.
Apr. 15, 1946
V.M. Patterson

S.E. Corner of Oscar F. Clark D.L.C. No. 42 T. 11 S. R. 5 W.
Set a 1 1/4" Pipe, set from Oak 20" N 73° E. 116 lks. Stump

Corner to sections 20, 21, 28 and 29, Twp. 12 S., R. 5 W. W. M.

1217

Reestablishment by W. C. Galloway

June 1942

Set a $1\frac{1}{4}$ " pipe in low ground or slough

Ash 20" in diam bears N 12° W	.29 chains
Oak 12" in diam bears N E.	.699 chains
Oak 12" in diam bears S $57\frac{1}{2}^{\circ}$ E	.78 chains
Chittam 6" in diam bears S $66\frac{1}{2}^{\circ}$ W	.603 chains
S. W. corner of Alfred Rhinehart C1 73, S. $86^{\circ}30'E$	13.150 chains

T12S R5W SEC 28 NW COR

END 1 1/4 I.D.I.P FOR THE CORNER (COR REST NO. 1217)

" AN OAK 40" IN DIA BEARS S53° E ~ 51.49' (S 57° 30' E

~ 51.48 COR. REST. NO. 1217). TREE HAS A HEALED FACE

ON NW SIDE SET PK & B.C.B.W IN SW 1/4 BASE SET

B.T. TAG ON NW 1/4 FACE.

" AN ASH 15" IN DIA BEARS N 6° W ~ 20.64' (N 12° W ~

19.14' COR. REST NO. 1217). NO MARKS WERE VISIBLE.

SET A PK & B.C.B.W IN E 1/4 BASE SET A B.T. TAG ON

THE S 1/4 FACE

NO OTHER RECORD BEARING OBJECTS WERE RECOVERED

SET: 2" I.D. x 36" LONG IRON PIPE @ A 3 1/4" BEN. CO. R.C.

STAMPED AS SHOWN CENTERED OVER THE 1 1/4" I.P.

0.1' BELOW SURFACE.

AN ASH 13" IN DIAMETER BEARS N 61° E ~ 17.47'

FACED & SCRIBED "T12S R5W S21 87" SET A PK &

B.C.B.W IN NW 1/4 BASE. SET B.T. TAG ON SW 1/4 FACE.

AN ASH 8" IN DIA BEARS S 8° E ~ 14.77' FACED & SCRIBED

"T12S R5W S28 87". SET A PK & B.C.B.W IN NW 1/4 BASE SET

B.T. TAG ON NW 1/4 FACE

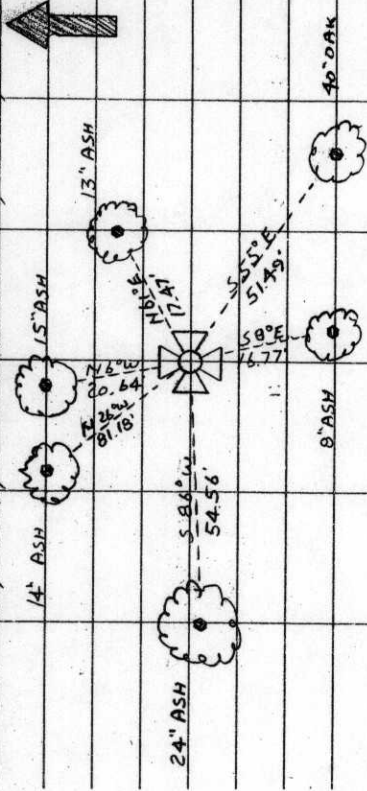
AN ASH 24" IN DIA BEARS S 88° W ~ 57.56' FACED & SCRIBED

"T12S R5W S29 87" SET A PK & B.C.B.W IN S 1/4 BASE.

SET B.T. TAG ON E 1/4 FACE.

4/51

7/11/89 i.c.j.l.v. M.B. & SILVA COMP. 20° E DEC. SUNNY WARM



AN ASH 14" IN DIA BEARS N 28° W ~ 81.18' FACED & SCRIBED "T12S R5W S28 87" SET A PK & B.C.B.W. IN SW 1/4 BASE SET A B.T. TAG ON SE 1/4 FACE.

THE CORNER IS LOCATED 700' ± N 1/4 OF AIRPORT RD, 75' ± W 1/4 OF FARM FIELD, 1' E 1/4 OF AN OLD FENCE POST LINE & IN A LOW AREA SUBJECT TO SEASONAL INUNDATION. IT WOULD BE POOR FOR PREMARKING & G.P.S. CONTROL.

CAP STAMPINGS

T12S R5W

S20 S21

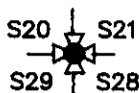
S29 S28

1989

SECTION 28 TOWNSHIP 12 S RANGE 5 W DLC _____ CORNER NW
 DATE 7/11/89 CORNER RESTORATION FIELD BOOK NUMBER 4 PAGE 51

CORNER DESIGNATION:

THE NORTHWEST CORNER OF SECTION 28,
 T 12 S R 5 W.



- _____ CONDITION REPORT ONLY
- _____ REFERENCED OUT
- XX RENEWED
- _____ SURVEYED IN

LOCATION AND COMMENTS:

THE CORNER IS LOCATED APPROXIMATELY 700 FEET NORTHERLY OF AIRPORT ROAD (COUNTY ROAD NO. 25280), 75 FEET WESTERLY OF A FARM FIELD, 1 FOOT EASTERLY OF AN OLD FENCE POST LINE AND IN A LOW AREA SUBJECT TO SEASONAL INUNDATION.

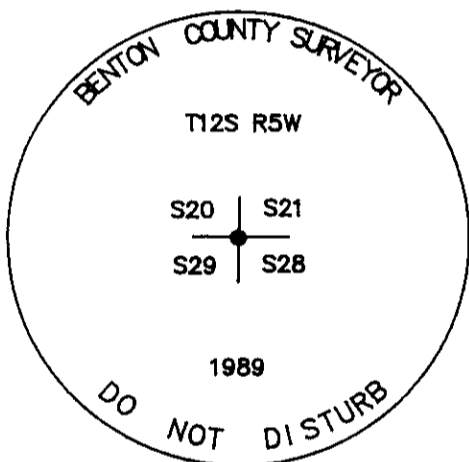
PREVIOUS RENEWALS/SURVEYS, ETC.:

COUNTY SURVEY NO. 621 BY W. C. GALLOWAY IN 1918.
 CORNER RESTORATION NO. 1217 BY W. C. GALLOWAY IN 1942.
 COUNTY SURVEY NO. 2058 BY W. C. GALLOWAY IN 1948.

MONUMENTS AND ACCESSORIES FOUND (CONDITION AND SOURCE):

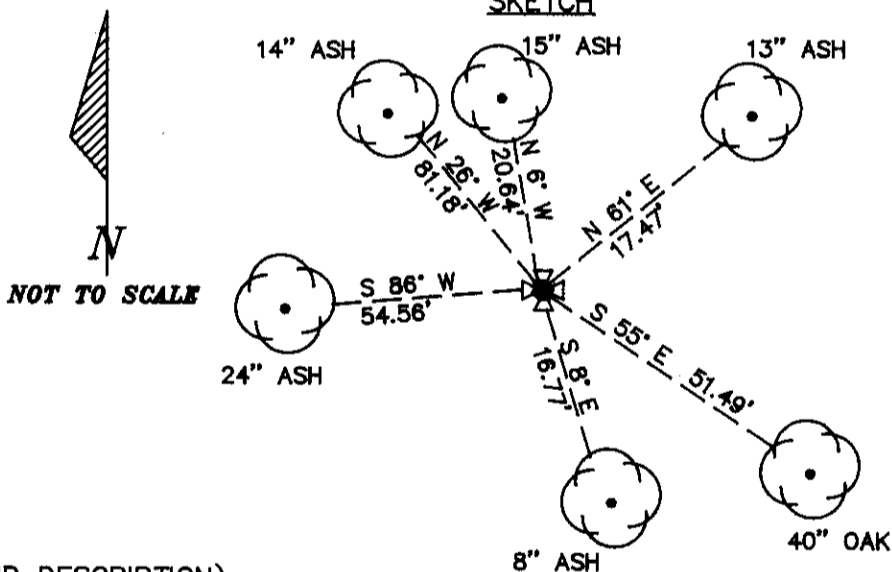
- FOUND: 1 1/4" INSIDE DIAMETER IRON PIPE FOR THE CORNER (CORNER RESTORATION NO. 1217).
- FOUND: AN OAK 40" IN DIAMETER BEARS S 55° E 51.49 FEET (S 57° 30' E 51.48 FEET, CORNER RESTORATION NO. 1217). THE TREE HAS A HEALED FACE ON THE NORTHWEST SIDE. SET A P.K. NAIL AND A B.C.B.W. IN THE SOUTHWESTERLY BASE. SET A B.T. TAG ON THE NORTHWESTERLY FACE.
- FOUND: AN ASH 15" IN DIAMETER BEARS N 6° W 20.64 FEET (N 12° W 19.14 FEET, CORNER RESTORATION NO. 1217). NO MARKS WERE VISIBLE. SET A P.K. NAIL AND A B.C.B.W. IN THE EASTERLY BASE. SET A B.T. TAG ON THE SOUTHERLY FACE.
- NO OTHER RECORD BEARING OBJECTS WERE RECOVERED.

MONUMENT DETAIL



3 1/4" BRASS CAP

SKETCH



MONUMENT SET (PROCEDURES AND DESCRIPTION):

SET A 2" INSIDE DIAMETER BY 36" LONG IRON PIPE WITH A 3 1/4" BENTON COUNTY BRASS CAP, STAMPED AS SHOWN, CENTERED OVER THE RECOVERED 1 1/4" IRON PIPE, 0.1 FOOT BELOW SURFACE.

NEW ACCESSORIES :

- AN ASH 13" IN DIAMETER BEARS N 61° E 17.47 FEET. FACED AND SCRIBED "T12S R5W S21 BT". SET A P.K. NAIL AND A B.C.B.W. IN THE NORTHWESTERLY BASE. SET A B.T. TAG ON THE SOUTHWESTERLY FACE.
- AN ASH 8" IN DIAMETER BEARS S 8° E 16.77 FEET. FACED AND SCRIBED "T12S R5W S28 BT". SET A P.K. NAIL AND A B.C.B.W. IN THE WESTERLY BASE. SET A B.T. TAG ON THE NORTHERLY FACE.
- AN ASH 24" IN DIAMETER BEARS S 86° W 54.56 FEET. FACED AND SCRIBED "T12S R5W S29 BT". SET A P.K. NAIL AND A B.C.B.W. IN THE SOUTHERLY BASE. SET A B.T. TAG ON THE EASTERLY FACE.
- AN ASH 14" IN DIAMETER BEARS N 26° W 81.18 FEET. FACED AND SCRIBED "T12S R5W S20 BT". SET A P.K. NAIL AND A B.C.B.W. IN THE SOUTHWESTERLY BASE. SET A B.T. TAG ON THE SOUTHWESTERLY FACE.

NOTES:

B.C.B.W. IS A BRASS WASHER STAMPED "BENTON COUNTY SURVEYOR". COMPASS DECLINATION IS 20° EAST. ALL MEASURED DISTANCES AND COMPASS BEARINGS ARE TO THE CENTER OF THE OBJECT, UNLESS OTHERWISE NOTED.

FIRM/AGENCY: BENTON COUNTY PUBLIC WORKS
ADDRESS: 360 S.W. AVERY AVE. CORVALLIS OR. 97333; PH. 757-6821
PARTY CHIEF: CURTIS J. LIESENFELT
CREW: MARY BARRON
WITNESS:

REGISTERED
 PROFESSIONAL
 LAND SURVEYOR

Danna L. Ingram-Fehrenbacher

OREGON
 JULY 16, 1982
 DANNA L. INGRAM-FEHNBACHER
 1995