

CORNER FILE TRACKING

F:\Survey\Corners\Misc\Filetrac.doc

8/11/97

CORNER NUMBER

125540100

STEP	HISTORY()	RESTORATION()
Form Prepared, DB	8/26/97	8/26/97
Field Inspection, DB	—	—
Form Checked, DB	9/10/97	9/10/97
Form Edited, DB	10/2/97	10/2/97
Form Signed, DB	5/27	5/27/98
Authorize Payment, DB	—	—
Archive Digital Files	5/27/98	5/27/98
Collect Documents	4	4
Copy For Filming	6/30/98	6/30/98
Filmed		
Scanned (Archived), DB	7/20/98	7/20/98
Indexed		
Update Database		
Filed, DB		

(DB) = Entry needed in database (Access).

COMMENTS:

2/9/98 WAITING FOR RAY TO FILE THE GIS/DEA PROJECT

14
35
2
13

CORNER HISTORY		T 12 S, R 5 W		SECTION 35 D.L.C.		CORNER S 1/4 CORNER		# 540100	
NO.	DATE	SOURCE	SURVEYOR	MONUMENTS AND ACCESSORIES		COMMENTS			
1	5/5/1853	ORIG. GLO	GEORGE W HYDT	SET POST @ 2 OAK BT'S MEAS TO FACE				1	
2	2/21/1912	DIST. TO B.O. N.W. 298	J.A. GARDNER	FIND BT'S SET OAK STR. @ 1 BT. FEB 9/53				2	
3	"	DIST. TO B.F.S. @ 4, P.C. 29	"	" " " " " " " "				3	
4	"	REST. 1238	"	TRAIL. HAY ST. RISSO [23] + N.W. / N.W. DIV. E & S				4	
5	NONE GIVEN	N.W. B. N.W. 135, 00092	WALTER W. LARSEN	NO MON. DESC.				5	
6	6/23/1907	CON. REST. F.B. 18 P.L. S.B.	CURT LISENFELT	FIND. REC. TO 27 SE @				6	
7	6/27/1927	BEN. CO. GARDNER / ADJUTANT. PRES.	RAY WILSON	EST. ST. P.L.W. CORNER FROM REC TO 27 SE @				7	
								8	
								9	
								10	
								11	
								12	
								13	
								14	
								15	
								16	
								17	
								18	
								19	
								20	
								21	
								22	
								23	
								24	
								25	
								26	

12-5-35 S 1/4 4th 125th 3526
 Map No. 12-5-35-3526, 3527, 3528
 12-5-35 12-5-35 P.L. W.C.

4423
 4428
 5400

2552
1/4-Corner section 35 and 2 on Twp line between Twps 12-13 S R 5 W WM

Reestablishment by W. C. Galloway

February 21, 1912

1238

Set 30 x 4 x 4" heart oak stake for corner

Oak 32" diam bears S 54° 10' E 10.551 chains distant

N. E. tree standing, S. E. stumps

Witnesses L. H. Hawley and M. L. Barnett

Inverse S 32 39 49.5 E 86548.76 USFeet
 124100240A 315166.5711 7489593.4821 227.3421 W 1/4 SEC 30
 Traverse S 2 05 13.0 W 2645.67 USFeet
 124100200Z 312522.6559 7489497.1374 ** SW COR SEC 30

=====

COORDINATE GEOMETRY ROUTINES

=====

COORDINATE SYSTEM TRANSFORMATIONS

=====

Coord File GISDEA.CRD :
 Coord System: LAMBERT Spheroid: GRS 1980
 Zone: 99 Description: OREGON NORTH
 Elevation MethINDIVIDUAL

Point ID	NORTH Latitude Scale Factor	EAST Longitude Combined Factor	ELEV Elevation	Descriptor Convergence
<u>125540100C</u>	307118.7362 N 44 28 31.07013 0.99996727	7481595.3189 W 123 15 38.75408 <u>0.99995882</u>	247.4667	- 1 57 28.42542

124100200Z 312522.6559 7489497.1374 ** SW COR SEC 30

TRAVERSE from 124100200Z
 Inverse S 56 30 10.0 W 9775.14 USFeet
 125540100D 307127.7880 7481345.5228 247.4405
 Inverse S 87 55 28.9 E 249.96 USFeet
 125540100C 307118.7362 7481595.3189 247.4667

Benton County
 Geodetic Points 7/9/97

Original Coords. on NAD 27 Geographic Coordinates
 Translated Coords. on NAD 83 Geographic Coordinates

NAME	INPUT	OUTPUT
Terminal Structure 1974	44 21 07.64800 N	44 21 07.09053 N
	123 12 53.12600 W	123 12 57.46883 W
Datum Shift(m),	Delta Lat. = -17.207	Delta Lon. = 96.182

DATE 08/26/1997

TOWNSHIP 12 SOUTH, RANGE 5 WEST, WILLAMETTE MERIDIAN; SECTION 35 CORNER S 1/4
DONATION LAND CLAIM _____ CORNER _____

COMMON CORNER(S):

THE NORTH QUARTER CORNER OF SECTION 2 IN TOWNSHIP 13 SOUTH, RANGE 5 WEST.

CORNER RECORDS (PREVIOUS RENEWALS, SURVEYS, ETC.)

- [01] ORIGINAL GLO SURVEY BY GEORGE W. HYDE, DATED MAY 5, 1853. *SET POST WITH TWO OAK BEARING TREES, MEASURED TO FACE.*
- [02] COUNTY ROAD, OLD NUMBER 296 BY J.A. GANONG DATED FEBRUARY 21, 1912. *FOUND BEARING TREES, SET OAK STAKE WITH ONE BEARING TREE (FIELD BOOK NO. 9, PAGE 53).*
- [03] OLD CORNER RESTORATION BOOK NO. 1, PAGE 29 BY J.A. GANONG DATED FEBRUARY 21, 1912. *FOUND BEARING TREES, SET OAK STAKE WITH ONE BEARING TREE.*
- [04] CORNER RESTORATION NO. 1238. *TRANSCRIBED COPY OF RECORD [03] AND MAY CONTAIN ERRORS AND OMISSIONS.*
- [05] MAP NO. 13-5-00002 BY WALTER W. LARSEN (NO DATE GIVEN). *NO MONUMENT DESCRIPTION.*
- [06] CORNER RESTORATION FIELD BOOK NO. 16, PAGE 58, BY CURT LIESENFELT, DATED JUNE 23, 1997. *FOUND RECORD [02] BEARING TREE.*
- [07] BENTON COUNTY GIS/DEA MAPPING PROJECT BY RAY WILSON, DATED JUNE AND JULY, 1997. *ESTABLISHED STATE PLANE COORDINATES AT RECORD [02] BEARING AND DISTANCE FROM THE RECORD [02] SOUTHEAST BEARING TREE.*

COMMENTS/LOCATION/ETC:

HORIZONTAL AND VERTICAL INFORMATION:

HORIZONTAL DATUM:

LATITUDE:
LONGITUDE:

VERTICAL DATUM:

ELLIPSOID ELEVATION:
ORTHOMETRIC ELEVATION:
GEOID SEPERATION:

STATE PLANE COORDINATE SYSTEM:

N (Y):
E (X):

SCALE FACTOR:
COMBINED FACTOR:
CONVERGENCE:

NOTES:

THIS IS A MICROSOFT WORD 97 DOCUMENT NAMED "25540100" CREATED FROM A BOILER PLATE DOCUMENT NAMED "HISTORY", WHICH HAS A STYLESHEET NAMED "CORNER" ATTACHED TO IT.
INFORMATION IN ***BOLD ITALICS*** IS COUNTY STAFFS' INTERPRETATION OF THE RECORD.

FIRM/AGENCY: BENTON COUNTY SURVEYOR'S OFFICE
ADDRESS: 360 S.W. AVERY AVE. CORVALLIS OR 97333; PH. 757-6821
RESEARCH BY: CURTIS J. LIESENFELT
DATA ENTRY BY: ROSE LINDGREN

SEE CORNER HISTORY FORM FOR RECORDS ETC.

**CORNER RESTORATION FIELD BOOK NUMBER 16 PAGE(S) 61 DATE 08/28/1997
**TOWNSHIP 12 SOUTH, RANGE 5 WEST, WILLAMETTE MERIDIAN; SECTION 35 CORNER S 1/4
**DONATION LAND CLAIM _____ CORNER _____
 CONDITION REPORT _____; REFERENCED OUT _____; RENEWED XX; SURVEYED IN _____******

LOCATION AND COMMENTS:

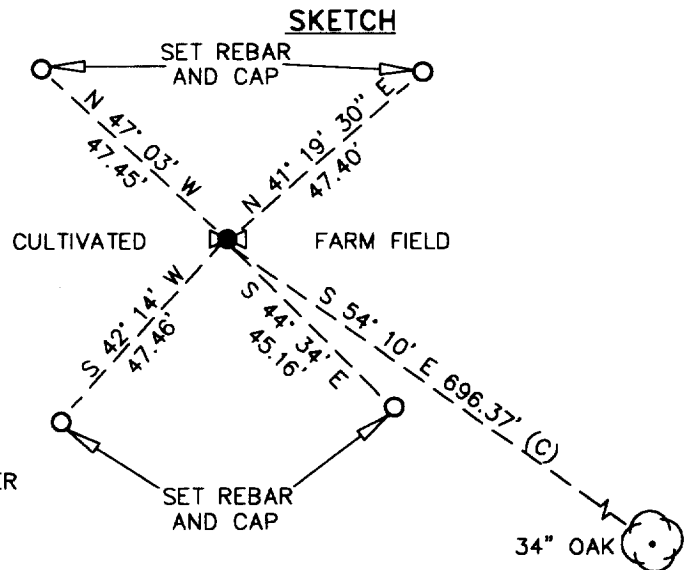
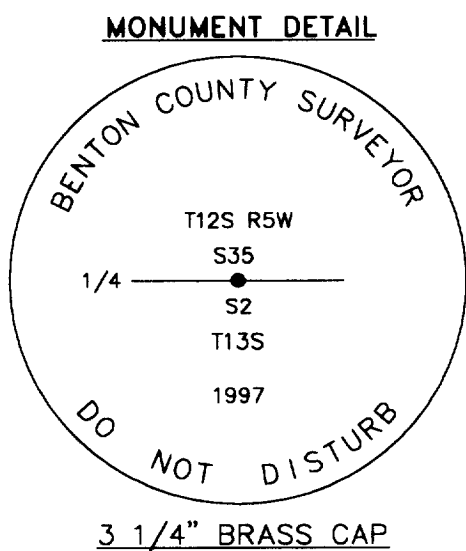
THE CORNER IS LOCATED IN A CULTIVATED FARM FIELD, APPROXIMATELY 300' NORTHERLY FROM THE PHYSICAL CENTERLINE OF SMITH LOOP ROAD AND 3040' EASTERLY FROM THE PHYSICAL CENTERLINE - CENTERLINE INTERSECTION OF HIGHWAY 99W AND SMITH LOOP ROAD AS MEASURED ALONG SMITH LOOP ROAD. IT IS GOOD FOR PREMARKING.

MONUMENTS AND ACCESSORIES FOUND (CONDITION AND SOURCE):

- FOUND: 34" OAK, CUT OPEN WITH SCRIBING "CS28" FOUND PK NAIL AND BRASS WASHER IN NORTHEASTERLY BASE. TREE BEARS S 54° 10' E, 696.37 (32", S 54°10' E, 696.37' AS PER RECORD [02]). SET B.T. TAG.
- FOUND: 40" OAK LYING DOWN IN A NORTHEASTERLY DIRECTION, OVER A BANK, NEAR THE POSITION OF THE ORIGINAL NORTHEAST BEARING TREE (16" OAK, N 70°E, 716.1' TO FACE AS PER RECORD [01]).
- NO OTHER RECORD EVIDENCE WAS RECOVERED.

MONUMENT SET (PROCEDURES AND DESCRIPTION):

SET: 2" INSIDE DIAMETER X 36" LONG IRON PIPE WITH A 3 1/4" BENTON COUNTY BRASS CAP, STAMPED AS SHOWN, 20" BELOW GROUND SURFACE, AT RECORD [02] BEARING AND DISTANCE (N 54°10' E, 696.37') FROM THE RECORD [02] BEARING TREE.



NEW ACCESSORIES:

- SET: REBAR (SEE NOTES) 20" BELOW GROUND SURFACE, BEARS N 41° 19' 30" E, 47.40 FEET.
- SET: REBAR (SEE NOTES) 20" BELOW GROUND SURFACE, BEARS S 44° 34' E, 45.16 FEET.
- SET: REBAR (SEE NOTES) 19" BELOW GROUND SURFACE, BEARS S 42° 14' W, 47.46 FEET.
- SET: REBAR (SEE NOTES) 18" BELOW GROUND SURFACE, BEARS N 47° 03' W, 47.45 FEET.
- SET: ORANGE FIBERGLASS "SURVEY MARKER" POST AT THE EASTERLY EDGE OF FIELD, ALONG A WOODEN RAIL FENCE BEARS, EAST 301.9 FEET.

NOTES:

COMPASS DECLINATION IS 20° EAST. ALL MEASURED DISTANCES AND BEARINGS ARE TO THE CENTER OF THE OBJECT, UNLESS OTHERWISE NOTED. ALL NEW BEARING TREES HAVE A PLASTIC WASHER (STAMPED "BENTON COUNTY SURVEYOR CORNER RESTORATION") ATTACHED (BY ALUMINUM NAIL) TO THE FACE, BELOW THE "BT" FOR DISTANCE AND ANGLE MEASUREMENT UNLESS OTHERWISE NOTED. ALL SET REBAR ARE 5/8" X 30" AND HAVE A YELLOW PLASTIC CAP (STAMPED "BENTON COUNTY SURVEYOR") ATTACHED TO THE TOP.

THIS DOCUMENT WAS NAMED AND CREATED IN A MANNER SIMILAR TO THE HISTORY FORM. THE NAME OF THE BOILER PLATE IS "MONUMENT". THE BORDER, STAMP AND SKETCH ARE FROM AUTOCAD RELEASE 12.

THIS RESTORATION WAS PERFORMED AT THE DIRECTION AND APPROVAL OF THE BENTON COUNTY/DEPUTY COUNTY SURVEYOR. RW

FIRM/AGENCY: BENTON COUNTY SURVEYOR'S OFFICE
ADDRESS: 360 S.W. AVERY AVE. CORVALLIS OR 97333; PH. 757-6821
SURVEYOR: CURTIS J. LIESENFELT
SURVEY CREW: MIKE KNAPP

REGISTERED
PROFESSIONAL
LAND SURVEYOR

Curtis J. Liesenfelt

OREGON
JULY 17, 1986
CURTIS J. LIESENFELT
2213