

185

v N.W. cor. of David Henderson D.S.P. 446 Sp. 12-4  
 Set 3/4" gal pipe, orig. corner, n.e. stump 3,67 chs.  
 Oak 15" in dia. bears S 87° E. 727 chs.  
 " 12" " " " S 70° W. 3,50 " std.  
 Oak post 16" " " " S 15° W. 242 "  
 " " 7" " " " N. 46° W. 1,057 "  
 Witnesses Albert Shriver & G.W. McCarty Jan. 2, '14

186

v 1/4 sec. cor. bet. secs 24 & 25 Sp. 12-5.  
 Set 3/8" iron rod set from old ash N. 40° W. 20  
 W. 3 1/2" in dia. bears S. 84° 46' E. 836 chs  
 Oak 16" " " " S. 18° 45' E. 1,368 "  
 Witness Geo. Fisher. Jan. 15, '14

v 1/4 sec. cor. bet. secs 23 & 24 Sp. 12-5.  
 Set a 3/4" iron rod orig. stake, stump S.E.  
 Maple 15" in dia. bears N. 66° 20' E. 342 chs.  
 W. 5 1/2" " " " N. 78° 50' W. 597 " std.  
 Witness Geo. Fisher N. 37° " " 66 " " Jan. 17, 1914

v sec. cor. to secs 23, 24, 25, & 26 Sp. 12-5.  
 Set 3/4" bolt n.e. stump  
 W. 5 1/2" 30" in dia. bears N. 1° 30' E. 565 chs.  
 Fir 40" " " " S 10° E. 18 " std.  
 " 16" " " " S. 32° W. 49 " "  
 Oak 20" " " " N. 57° W. 55 " "  
 Witness Geo. Fisher. Jan 18, 1914

v 1/4 sec. cor. bet. secs 24 & 19 Sp. 12 S. 18° 45' W.  
 Set 3/4" iron rod ash stump, Willow corner.  
 Ash 14" in dia. bears S. 16° 30' W. 650 chs.  
 Fir 20" " " " S. 29° 30' W. 413 " M.C.G.  
 Witness Geo. Fisher N. 29° 30' W. 707 " Fir gone Dec. 14, 1928  
 Jan. 19

v 1/4 sec. cor. bet. secs 19 & 30 Sp. 12-4  
 Sec. an angle iron  
 Oak 12" in dia. bears N. 8° E. 102 chs. std.  
 Pine 30" " " " S 57° W. 488 " "  
 Witnesses Geo. Fisher. Jan. 29, '14

Road 332 1/2

v 1/4 sec. cor. bet. secs 8 & 17, Sp. 12-5.  
 Set yellow shale  
 Ash 10" in dia. bears N. 2° E. 440 chs.  
 " 6" " " " N. 12° " 17 " std.  
 Witnesses J.W. Bair, H.W. Gray, S.L. Farley. Feb. 20, '14

~~1~~-Section corner between sections 24 and 25, Twp. 12-5

1222

Reestablishment by W. C. Galloway

January 15, 1914

Set 5/8" iron rod, Set from old ash N 40° W  
W. Fir 14" in diam bears S 84° 45' E  
Ash 16" in diam bears S 18° 45' E

.20 chains  
.836 chains  
.368 chains

Witnesses George Fisher

24  
25

CORNER HISTORY		T 12 S, R 5 W		SECTION 24 Q.L.C.		CORNER 5 1/4 CORNER		#
								640300
NO.	DATE	SOURCE	SURVEYOR	MONUMENTS AND ACCESSORIES		COMMENTS		
1	5/5/1853	ORIG. 610	GEORGE W. HYDE	SET POST @ 2 BT'S, MEAS. TO FACE				1
								2
2	1/15/1914	CS # 417	W. C. GALLOWAY	FND. BT. SET 5/8" IRON ROD @ 2. NEW BT'S. FB 16/10		TIED 1 MI. N		3
								4
3	"	DLO COR. REST. BK NO. 1 PL. 75	" "	SAME INFO AS RECORD [027]				5
								6
4		REST. 1222		TRANS. COPY OF REC. [037] + MAY CONTAIN E + D				7
5	NONE GIVEN	MAP NO 12-5-60043	BENTON COUNTY	5/8" IRON ROD @ 3 BT'S				8
6	8/11/1937	CS # 1339	W. C. GALLOWAY	IRON ROD @ 3 BT'S FB 61/35		TIED FROM W		9
								10
7	NONE GIVEN	CS # 7327	UNKNOWN	5/8" IRON ROD @ 3 BT'S				11
								12
8	8/1946	CS # 1794	CURTIS C. HANSON	FND. 1. PIN TREES OK, FB 103/25		TIED FROM SEC. COR 1/2 MI. W		13
								14
								15
								16
								17
								18
								19
								20
								21
								22
								23
								24
								25
								26
								27
								28
								29
								30
								31

1-75  
1222

**CORNER FILE TRACKING**

F:\Survey\Corners\Misc\Filetrac.doc

8/7/97

<b>STEP</b>	<b>HISTORY</b>	<b>RESTORATION</b>
<b>FORM PREPARED</b>	✓	✓
<b>FORM CHECKED</b>	✓	✓
<b>FORM EDITED</b>	✓	✓
<b>FORM SIGNED</b>	—	✓
<b>ARCHIVE DIGITAL FILES</b>	8/12/97	8/12/97
<b>COLLECT DOCUMENTS</b>	✓	✓
<b>COPY FOR FILMING</b>	✓	✓
<b>FILMED</b>	8/19/97	8/19/97
<b>SCANNED</b>		
<b>INDEXED</b>		
<b>UPDATE DATABASE</b>		
<b>FILED</b>		

**BENTON COUNTY CORNER RESTORATION FORM, PAGE 1 OF 1, 125640300R2**

**SEE CORNER HISTORY FORM FOR RECORDS ETC.**

CORNER RESTORATION FIELD BOOK NUMBER          PAGE(S)          DATE 3/19/97  
TOWNSHIP 12 SOUTH, RANGE 5 WEST, WILLAMETTE MERIDIAN; SECTION 24 CORNER S 1/4  
DONATION LAND CLAIM          CORNER           
CONDITION REPORT         ; REFERENCED OUT         ; RENEWED         ; SURVEYED IN XX

**LOCATION AND COMMENTS:**

THE CORNER IS LOCATED IN AN OPEN GRASS FIELD APPROXIMATELY 900 FEET SOUTH OF THE MIDDLE CHANNEL OF THE WILLAMETTE RIVER AND 45 FEET WEST OF A BOUNDARY BETWEEN TWO GRASS FIELDS. THE CORNER LIES IN A SMALL EAST/WEST SWALE.

**MONUMENTS AND ACCESSORIES FOUND (CONDITION AND SOURCE):**

NONE FOUND AFTER EXCAVATING A ONE FOOT DIAMETER HOLE AT THE COMPUTED CORNER TO A DEPTH OF TWO FEET AND SEARCHING A 10 FOOT DIAMETER AREA WITH A MAGNETIC LOCATOR. THE RECORD 5/8" IRON ROD AND BEARING TREES APPEAR TO HAVE BEEN DESTROYED BY FARMING OPERATIONS.

**MONUMENT SET (PROCEDURES AND DESCRIPTION):**

SET A 2 1/2" ALUMINUM CAP WITH MAGNET RIVETED TO A 2 1/2" X 30" ALUMINUM PIPE WITH SPLIT BOTTOM, 24" BELOW THE SURFACE OF THE GROUND. THE CORNER WAS REESTABLISHED BY THE GRANT BOUNDARY METHOD USING A 3/4" IRON ROD S 89° 29' 16" W, 1755.91' (RECORD S 89° 28' W, 26.606 CHAINS) AND THE NORTH QUARTER CORNER OF SECTION 24, N 0° 03' 16" E, 5284.03' (RECORD N 0° 02' E, 80.065 CHAINS). SEE COUNTY SURVEY NO. 9186 FOR MORE INFORMATION.

A FIBERGLASS POST WITH BENTON COUNTY SURVEY MARKER TAG WAS PLACED S 15° 53' W, 228.4', NEXT TO AN IRRIGATION HEADER, AT THE REQUEST OF THE LANDOWNER.

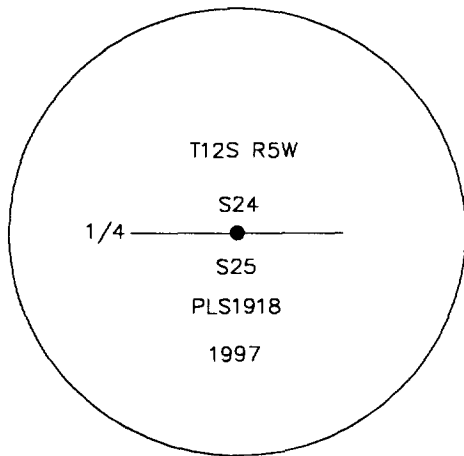
**NEW ACCESSORIES:**

SET 5/8" X 30" REBAR WITH YELLOW PLASTIC CAPS MARKED "PARSONS PLS 1918".

- N 46° 53' 45" E, 21.72', 18" BELOW THE SURFACE OF THE GROUND.
- S 20° 47' 45" E, 27.22', 24" BELOW THE SURFACE OF THE GROUND.
- S 44° 11' 45" W, 33.38', 22" BELOW THE SURFACE OF THE GROUND.
- N 52° 01' 15" W, 26.87', 18" BELOW THE SURFACE OF THE GROUND.

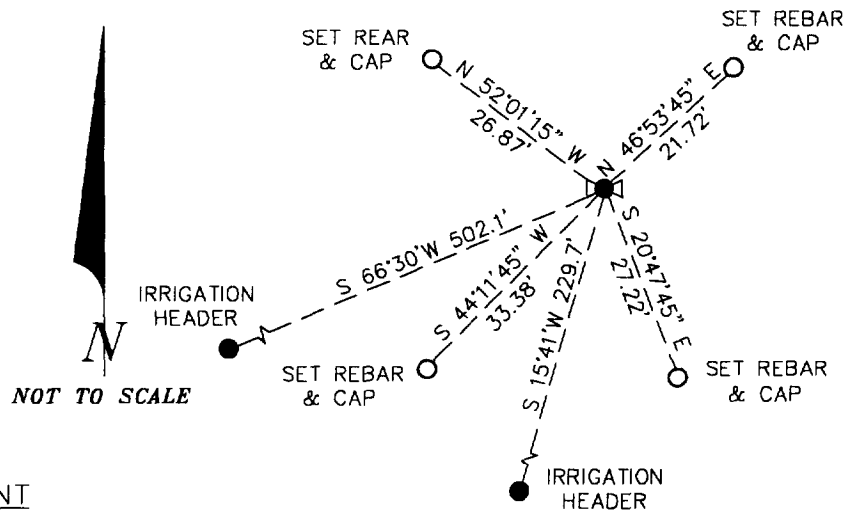
TO LOCATE THE CORNER, AN IRRIGATION HEADER WITH FIBERGLASS POST BEARS, S 15° 41' W, 229.7', AND AN IRRIGATION HEADER BEARS S 66° 30' W, 502.1'.

MONUMENT DETAIL



2 1/2" ALUMINUM CAP MONUMENT

SKETCH



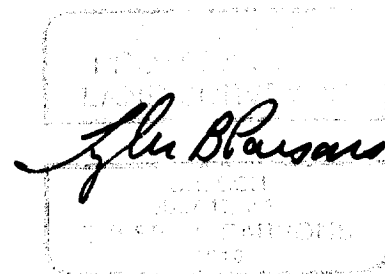
**NOTES:**

BASIS OF BEARINGS IS COUNTY SURVEY NO. 9186. ALL MEASURED BEARINGS AND DISTANCES ARE TO THE CENTER OF THE OBJECT, WITH THE EXCEPTION OF NEW BEARING TREES, UNLESS OTHERWISE NOTED. ALL BEARING TREES ARE PAINTED AND HAVE A B.T. TAG ATTACHED, FACING THE CORNER UNLESS OTHERWISE NOTED. ALL NEW BEARING TREES HAVE A PLASTIC WASHER (STAMPED "BENTON COUNTY SURVEYOR CORNER RESTORATION") ATTACHED TO THE BASE OF THE FACE UNLESS OTHERWISE NOTED.

THIS DOCUMENT WAS NAMED AND CREATED IN A MANNER SIMILAR TO THE HISTORY FORM. THE NAME OF THE BOILER PLATE IS "CORNER". THE BORDER, STAMP AND SKETCH ARE FROM AUTOCAD RELEASE 13.

THIS RESTORATION WAS PERFORMED UNDER CONTRACT WITH BENTON COUNTY.

**FIRM/AGENCY:** PARSONS SURVEYING  
**ADDRESS:** 1915 SE STONE ST. CORVALLIS, OR 97333; PH. (541) 752-7515  
**SURVEYOR:** TYLER B. PARSONS, PLS 1918  
**SURVEY CREW:** LOUISE H. PARSONS



EXP. 12/31/98

DATE 4/3/97TOWNSHIP 12 SOUTH, RANGE 5 WEST, WILLAMETTE MERIDIAN; SECTION 24 CORNER S 1/4  
DONATION LAND CLAIM \_\_\_\_\_ CORNER \_\_\_\_\_**COMMON CORNER(S):**

NORTH QUARTER CORNER OF SECTION 25.

**UPDATES AND REVISIONS:****CORNER RECORDS (PREVIOUS RENEWALS, SURVEYS, ETC.)**

- [01] ORIGINAL GLO SURVEY BY GEORGE W. HYDE, DATED MAY 5, 1853. **SET POST WITH 2 BEARING TREES MEASURED TO THE FACE.**
- [02] COUNTY SURVEY NO. 417 BY W. C. GALLOWAY, DATED JANUARY 15, 1914 IN FIELD BOOK NO. 16, PAGE 10. **FOUND BEARING TREE, SET 5/8" ROD WITH 2 NEW BEARING TREES.**
- [03] OLD CORNER RESTORATION BOOK NO. 1, PAGE 75 BY W. C. GALLOWAY, DATED JANUARY 15, 1914. **SAME INFORMATION AS RECORD [02].**
- [04] CORNER RESTORATION NO. 1222. **THIS IS A TRANSCRIBED COPY OF RECORD [03] AND MAY CONTAIN ERRORS AND OMISSIONS.**
- [05] MAP NO. 12-5-00043 BY BENTON COUNTY (NO DATE GIVEN). **5/8" IRON ROD WITH 3 BEARING TREES.**
- [06] COUNTY SURVEY NO. 1339 BY W. C. GALLOWAY, DATED AUGUST 11, 1937 IN FIELD BOOK NO. 61, PAGE 35. **IRON ROD WITH 3 BEARING TREES.**
- [07] COUNTY SURVEY NO. 7327 BY AN UNKNOWN PERSON (NO DATE GIVEN). **5/8" IRON ROD WITH 3 BEARING TREES.**
- [08] COUNTY SURVEY NO. 1794 BY CURTIS C. HANSON, DATED AUGUST, 1946 IN FIELD BOOK NO. 103, PAGE 25. **FOUND IRON PIN, TREES OK.**

**COMMENTS/LOCATION/ETC:****NOTES:**

THIS IS A MICROSOFT WORD (VERSION 6.0) DOCUMENT NAMED "25640300" CREATED FROM A BOILER PLATE DOCUMENT NAMED "HISTORY", WHICH HAS A STYLESHEET NAMED "CORNER" ATTACHED TO IT.  
INFORMATION IN BOLD ITALICS IS COUNTY STAFFS' INTERPRETATION OF THE RECORD.

**FIRM/AGENCY:** BENTON COUNTY SURVEYOR'S OFFICE  
**ADDRESS:** 360 S.W. AVERY AVE. CORVALLIS OR 97333; PH. 757-6821  
**RESEARCH BY:** CURTIS J. LIESENFELT  
**DATA ENTRY BY:** CURTIS J. LIESENFELT