

C.S. 124
W.C. Galloway

N.E. corner of Geo. W. Bethers D.L.C. #49 T.12-5.

Set $\frac{3}{4}$ " pipe for corner from which

The S.W. corner of Scott Claim is S.0°07'W. 7.432 chs.

A $\frac{3}{4}$ " pipe in the center of the Philomath Road N.0°07'E. 6.069 chs.A $\frac{3}{4}$ " pipe " " " " " " " " S.89°10'W. 8.637 "

C.S. 124

Corner set while
surveying Road #247
F. Marion Wilkes &
R.D. Coates
April 25, 1910.

N.E. corner of Silas Newcomb D.L.C. 50 T.12-5.

Set $\frac{1}{2}$ " pipe. We dug for sandstone and found a lot of pieces

A Stone at fence running E. bears S.0°26'E. 4.156 chs.

A $\frac{3}{4}$ " rod in cen. of Road 287 bears West 16.018 "A $\frac{1}{2}$ " pipe in the center of the road running N. bears

C.S. 118

W.C. Galloway D.C.S.
P.F. Thomas &
R.D. Coates
Oct. 1911.

Interior corner of Chas. Bates D.L.C. 53 T.12-5.

Stone set

Oak 24" in dia. bears N.00 $\frac{1}{2}$ °E. 2.91 chs. Govt. tree" 24" " " " N.48 $\frac{1}{2}$ °W. 3.21 " " "

C.S. 124

W.C. Galloway
Feb. 1912.

S.W. corner of A.G. Hovey D.L.C. #43 T.12-5

Orig. Brick for corner, No trees near.

C.S. 281

W.C. Galloway

N.W. corner of Silas Newcomb D.L.C. #50 T.12-5

Original Stone ^{4"x12"x24"} Near anchor post and in fence lines.

S.W. corner of Silas Newcomb D.L.C. #50 T.12-5

Original Stone 4"x12"x24" crumbling. S.W. of corner post

Corner at cemetery S.89°52'E. 6.856 chs.

N.W. corner of Charles Bales D.L.C. #53 T.12-5

Original Stone 15"x18"x30"

NW corner of cemetery North 50 links.

S.E. corner of Abiather Newton D.L.C. 42 T.12-5

Stone 6"x8"x24". Orig. stone lying down, checked and witnessed by

F. Marion Wilkes while stone was in orig. position.

A $\frac{3}{4}$ " pipe West 20 feet. Cor. is N.W. cor. of Stone.

Road #284

W.C. Galloway &
F. Marion Wilkes D.C.S.
J.O. Wilson & Wm
Gene Deble "

April 25, 1910.

Nov. 25, 1941, W.C.G.

N.W. corner of Norris P. Newton D.L.C. 44 T.12-6

Set a Stone 6"x8"x15", graded out 1 set a 2" cast pipe, 1" pipe in top, set $\frac{1}{2}$ " pipe N. on line. 337

Ash 6" in dia. bears S.36°35'E. 4.88 chs. 544

Oak 3" " " " N.30°20'E. 294 "

Ash " " " " N.59°20'E. 509 "

S.E. corner of Wyman St Clair D.L.C. 47 T.12-6

Set 1" pipe ^{galv. iron} Sand stone decayed enough to drive pipe thru stone.

drove 1" pipe N.84°15'W. 3095

Oak 10" N.38°15'E. 534

" 10" S.81°40'E. 319

" 16" N.71°W. 400

Nov. 25, 1941, No found
Pipe in good condition in
E of Co. road 6' underW.C.
Albert
G.H.
JulyC.S.
W.H. I.
J.W. I.
T.A.
Oct.C.
F. M.
Sep
J. R.Resum
W.C. G.
June
John
Archib.C.S.
J.A.
Apr.
B

Original plat for corner, no trees near.

Reestablishment by W. C. Galloway

S. W. corner of A. G. Hovey D/G 43, Twp. 12-5

1255

February 1912

CORNER HISTORY		T 12 S, R 5 W		SECTION 5 D.L.C. A.G. HOVEY NO. 43		CORNER CORNER SW		# 843030
NO.	DATE	SOURCE	SURVEYOR	MONUMENTS AND ACCESSORIES		COMMENTS		
①	8/27/1856	ORIG. G.L.O.	DENNIS HATHORN	SET POST, DEPOSITED BRICK + DUG TRENCH				1
								2
②	2/1912	CS# 290	W.C. GALLOWAY	NO MON. DESC.		FB 10/59		3
								4
③	"	OLD COR. BOOK #1 PG. 160	" "	ORIG. BRICK FOR COR.				5
								6
④	"	REST. 1255	" "	" " " "		TRANS. COPY + MAY CONT. ETO		7
⑤	5/20/1936	CS# 1278	" "	FND. BRICK REPLACED @ 3/4" x 3/4" C. PIPE		FB 6/1/19		8
⑥	ADME GIVEN	MAP NO. 12-S-00023	BENTON COUNTY SURVEYORS OFFICE	3/4" PIPE				9
								10
⑦	"	MAP NO. 12-S-00020	" " "	3/4" PIPE				11
								12
⑧	5/12/1940	CS# 2004	DONALD SHORT	NO MON. DESC.				13
								14
⑨	10/26/1952	CS# 2432	MARTIN BEYERLEIN	FND 3/4" P SET 3/4" ROD 4.114 CHS E'N 1/2" PIPE 10.331'E'N				15
								16
⑩	5/8/1962	CS# 3643	FRED LENKE	FND. 3/4" PIPE				17
								18
⑪	12/26/1977	CS# 6561	" "	NO MON. DESC. 3/4" ROD 271.52'E'N 1/2" PIPE 601.04'E'N				19
								20
⑫	9/1978	CS# 6757	" "	" " " " " " " " " " " " " "				21
								22
-	6/8/1988	REST. 3523	DANNA INGRAM	FND. 3/4" PIPE C COR + 3/4" ROD 271.52'E'N SET BL @ COR.		LOOKS OK		23
								24
								25
								26
								27
								28
								29
								30
								31

1-160
1255
3523

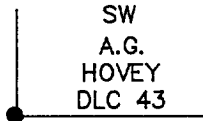
OREGON CORNER RESTORATION FORM

3523

SECTION SW DLC 43 TOWNSHIP 12 S RANGE 5 W

COUNTY BENTON DATE 6/8/1988

CORNER DESIGNATION



- _____ CONDITION REPORT ONLY
- _____ NOT FOUND
 - XXX _____ RENEWED
 - _____ UNRECORDED
 - _____ SURVEYED IN
 - _____ REFERENCED OUT

PREVIOUS RENEWALS/SURVEYS, ETC:

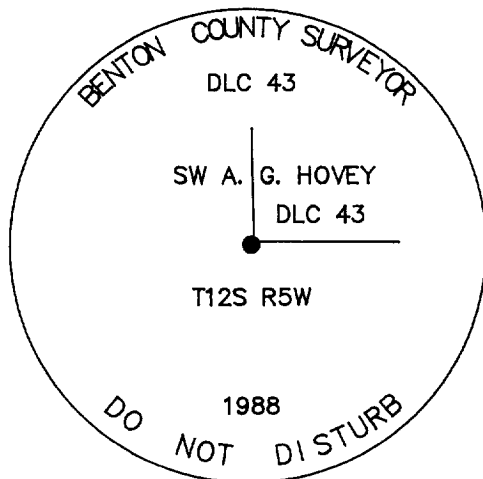
FEBRUARY 1912 CORNER RESTORATION No. 1255 BY W. C. GALLOWAY.
 MAY 20, 1936 FIELD BOOK 61 PAGE 19, FOUND BRICK AND REPLACED WITH
 3/4" GALVANIZED PIPE BY W. C. GALLOWAY.

MONUMENTS AND ACCESSORIES FOUND (CONDITION AND SOURCE):

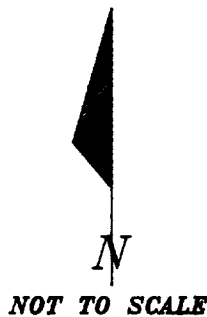
FOUND: 3/4" (ID) IRON PIPE PER GALLOWAY AT SURFACE IN FENCE CORNER.
 DID NOT FIND BRICK.

3/4" IRON ROD PER CS 2432 N89°36'E 271.52'.

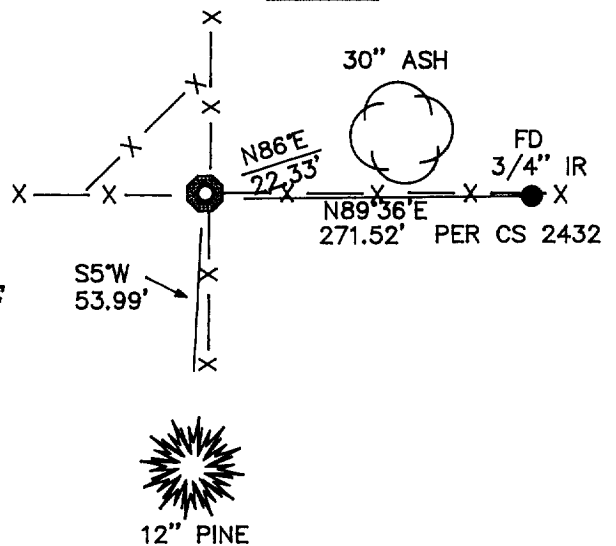
MONUMENT DETAIL



3 1/4" BRASS CAP



SKETCH



MONUMENT SET (PROCEDURES AND DESCRIPTION):

SET: 2" X 36" SQUARE IRON POST (TELSPAR SIGN POST) OVER 3/4" PIPE WITH 3 1/4" BRASS CAP MARKED AS SHOWN ABOVE.

NEW ACCESSORIES :

SCRIBED: 30" THREE FORKED ASH "DLC 43 BT" BEARING N86°E 22.33'.
 SCRIBING WAS DONE ON THE MOST WESTERLY FORK.
 NAILED BCBW TO SOUTH BASE.

NOTED: 12" PONDEROSA PINE S5°W 53.99'.
 NAILED BCBW TO EAST BASE.
 DID NOT SCRIBE DUE TO POOR CONDITION OF TREE.

NOTE: BCBW IS A BRASS WASHER STAMPED "BENTON COUNTY SURVEYOR'S OFFICE".
 ALL DISTANCES ARE TO BCBW, BEARINGS ARE TO CENTER OF TREE UNLESS OTHERWISE NOTED.
 ID = INNER DIAMETER

LOCATION AND COMMENTS :

CORNER FALLS IN FENCE INTERSECTION.
 FD IRON ROD FALLS IN FENCE LINE.

COMPASS DECLINATION : 20° E

FIRM/AGENCY : BENTON COUNTY PUBLIC WORKS

ADDRESS : 360 S.W. AVERY CORVALLIS, OREGON

PARTY CHIEF : RAYMOND E. WILSON

NOTES : ANDREW FOSTER

WITNESS :

REGISTERED
 PROFESSIONAL
 LAND SURVEYOR

Danna L. Ingram

OREGON
 JULY 18, 1982
 DANNA L. INGRAM
 1995

TOWNSHIP 12 SOUTH, RANGE 5 WEST, WILLAMETTE MERIDIAN; SECTION 5 CORNER

DONATION LAND CLAIM A.G. HOVEY NO. 43

CORNER SOUTHWEST

COMMON CORNER(S):

UPDATES AND REVISIONS:

CORNER RECORDS (PREVIOUS RENEWALS, SURVEYS, ETC.)

- [01] ORIGINAL GLO SURVEY BY DENNIS HATHORN DATED AUGUST 27, 1856.
- [02] COUNTY SURVEY NO. 290 BY W.C. GALLOWAY DATED FEBRUARY OF 1912 (FIELD BOOK NO. 10, PAGE 59).
- [03] OLD CORNER RESTORATION BOOK NO. 1 PAGE 160 BY W.C. GALLOWAY DATED FEBRUARY OF 1912.
- [04] CORNER RESTORATION NO. 1255 BY W.C. GALLOWAY DATED FEBRUARY OF 1912.
- [05] COUNTY SURVEY NO. 1278 BY W.C. GALLOWAY DATED MAY 20, 1936 (FIELD BOOK NO. 61 PAGE 19).
- [06] MAP NO. 12-5-00023 BY BENTON COUNTY SURVEYOR'S OFFICE (NO DATE GIVEN).
- [07] MAP NO. 12-5-00028 BY BENTON COUNTY SURVEYOR'S OFFICE (NO DATE GIVEN).
- [08] COUNTY SURVEY NO. 2004 BY DONALD SHORT DATED MAY 12, 1948.
- [09] COUNTY SURVEY NO. 2432 BY MARTIN BEYERLEIN DATED OCTOBER 28, 1952.
- [10] COUNTY SURVEY NO. 3643 BY FRED LEMKE DATED MAY 8, 1962.
- [11] COUNTY SURVEY NO. 6561 BY FRED LEMKE DATED DECEMBER 26, 1977.
- [12] COUNTY SURVEY NO. 6757 BY FRED LEMKE DATED SEPTEMBER OF 1978.
- [13] CORNER RESTORATION NO. 3523 BY DANNA INGRAM DATED JUNE 8, 1988.

COMMENTS/LOCATION/ETC:

THE SURVEYOR IN RECORD [01] MEASURED DISTANCES TO THE FACE OF HIS BEARING TREES.

RECORD [04] IS A TRANSCRIBED COPY OF RECORD [03] AND MAY CONTAIN ERRORS AND OMISSIONS.

NOTES:

THIS IS A MICROSOFT WORD (VERSION 5.0) DOCUMENT NAMED "25843030" CREATED FROM A BOILER PLATE DOCUMENT NAMED "HISTORY", WHICH HAS A STYLESHEET NAMED "CORNER" ATTACHED TO IT.

FIRM/AGENCY: BENTON COUNTY SURVEYOR'S OFFICE

ADDRESS: 360 S.W. AVERY AVE. CORVALLIS OR 97333; PH. 757-6821

RESEARCH BY: CURTIS J. LIESENFELT/MARK E. ANDERSON

DATA ENTRY BY: MARK E. ANDERSON