

C.S. 354 1/4 sec. cor. bet. Secs. 24 & 25 T. 10-6
 Witness I.D. Merchant Set 1" x 70" pipe 4" in ground set from 4" fir. hazel gone
 1927 Fir 40" in dia. bears S. 71° E. 338 chs.
 " 4" " " " S. 50° W. 59 chs. std.

C.S.
 Wit
 Roy

Corner to secs. 23, 24, 25 & 26 T. 10-6
 Set 1 1/2" pipe 65" long 4" in ground Orig. cor.
 Fir 20" in dia. bears N. 30° 40' E. 126 face std.
 " 8" " " " S. 30° 40' W. 657 " "
 W " 14" " " " S. 12° 50' E. 615 center
 W " 6" " " " N. 33° 30' W. 060 "

Witness Roy Swanson Feb. 23, 1927

1/4 Sec. cor. bet. secs. 25 & 26 T. 10-6
 Set 1 1/2" pipe, pile of rock

W. fir 5" in dia. bears N. 68° E. 39 chs. stump std.
 " " 7" " " " S. 47° W. 36 " " dead "
 " " 15" " " " S. 15 1/2° E. 220 "
 " " 38" " " " N. 140° W. 260 "
 Red " 60" "stump" S. 48° 45' W. 990 " cen. of top of stump
 Witness Roy Swanson Feb. 24, 1927.

C.S. #121 N.W. corner of Solemn K. Brown D.L.C. #54 T. 12 S. R. 5 W.
 Set a 3/4" x 54" iron rod S. of gate post
 Witness I.D. Merchant Oak 15" in dia. bears N. 23° E. 120 chs. std. ^{SE. tree gone} found imprint.
 Black walnut 4" " " S. 8° W. 313 "
 " " 3" " " N. 58° W. 254 "
 Nov. 1927. Cor. to Bales claim S. 89° 20' W. 311 "

" SW. Corner of Chas. Bales D.L.C. #53 T. 12 S. R. 5 W.
 Set 3/4" bolt in a 1 1/4" pipe in a 1 3/4" pipe
 Oak stump 12" in dia. bears N. 2° 30' W. 6.07 chs.
 Walnut 4" " " " N. 16° 20' E. 667 "
 " 4 " " " N. 53° 55' E. 642 "
 " 4 " " " S. 68° 08' E. 828 "
 " 4 " " " S. 22° 03' W. 354 "
 E. corner of wing of abutment of concrete bridge N. 7° 32' W. 5.923 chs.

C.
 Fir
 Roy
 W.T.

" N.E. cor. of Elijah Liggett D.L.C. #52 T. 12 S. R. 5 W.
 Stone in place
 Corner fence post bears N. 52° 25' E. 588
 " " " " S. 44° W. 657
 " " " " N. 32° 55' W. 544
 Oak 17" in dia. " N. 67° 30' W. 1164

C.
 W.
 C.C.
 W.

C.
 C.
 W.
 W.T.

S. W. corner of Charles Bales DLC 53, Twp. 12 S., R. 5 W.

1284

Reestablishment by W. C. Galloway

November 1927

Set a $\frac{3}{4}$ " bolt in a $1\frac{1}{2}$ " pipe in a $1\frac{3}{4}$ " pipe

Oak stump 12" in diam bears N 2° 30' W 6.07 chains

Walnut 4" in diam bears N 16° 20' E .667 chains

Walnut 4" in diam bears N 53° 55' E .642 chains

Walnut 4" in diam bears S 68° 08' E .828 chains

Walnut 4" in diam bears S 22° 03' W .354 chains

E. corner of wing of abutment of concrete bridge N 7° 32' W 5.923 chains.

Witness I. D. Merchant

1287

N. W. corner of Solemn K. Brown D1C 54, Twp. 12 S., R. 5 W.

November 1927

Reestablishment by W. C. Galloway

Set a $\frac{3}{4}$ " x 54" Iron rod South of gate post

Oak 15" in diam bears N 23° E

B. Walnut 4" in diam bears S 8° W

B. Walnut 3" in diam bears N 58° W

Corner to Bales cl. S 89° 20' W

Witness I. D. Merchant

- 1.20 chains
- .313 chains
- .254 chains
- 3.11 chains

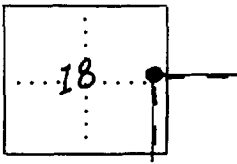
BENTON COUNTY SURVEYORS OFFICE - CORNER RESTORATION

302

T 12 S, R 5 W, W. B. & M., BENTON COUNTY, OREGON
 NORTHWEST CORNER
 SOLEMN K. BROWN D.L.C. #54

REPORTED BY JOHN RINALDI JR.
 TITLE BENTON COUNTY SURVEY CREW CHIEF
 DATE JANUARY 7, 1985

SECTION _____



● OFFICIAL CORNER FOUND
 ○ CORNER SET

CORNER COMMON TO SEC. _____ & _____

IS _____ DESCRIBE _____

ADDITIONAL INFORMATION

FOUND 3/4" IRON ROD PER COR. RESTORATION
 CARD N° 1287 & C.S. 3307 @ 0.2' BELOW
 GROUND SURFACE. FOUND ALSO ACCESSORIES
 AS SHOWN HEREON. MONUMENT IN GOOD
 CONDITION & LEFT IN PLACE

LEGIBLE MARKS ON BEARING OBJECTS

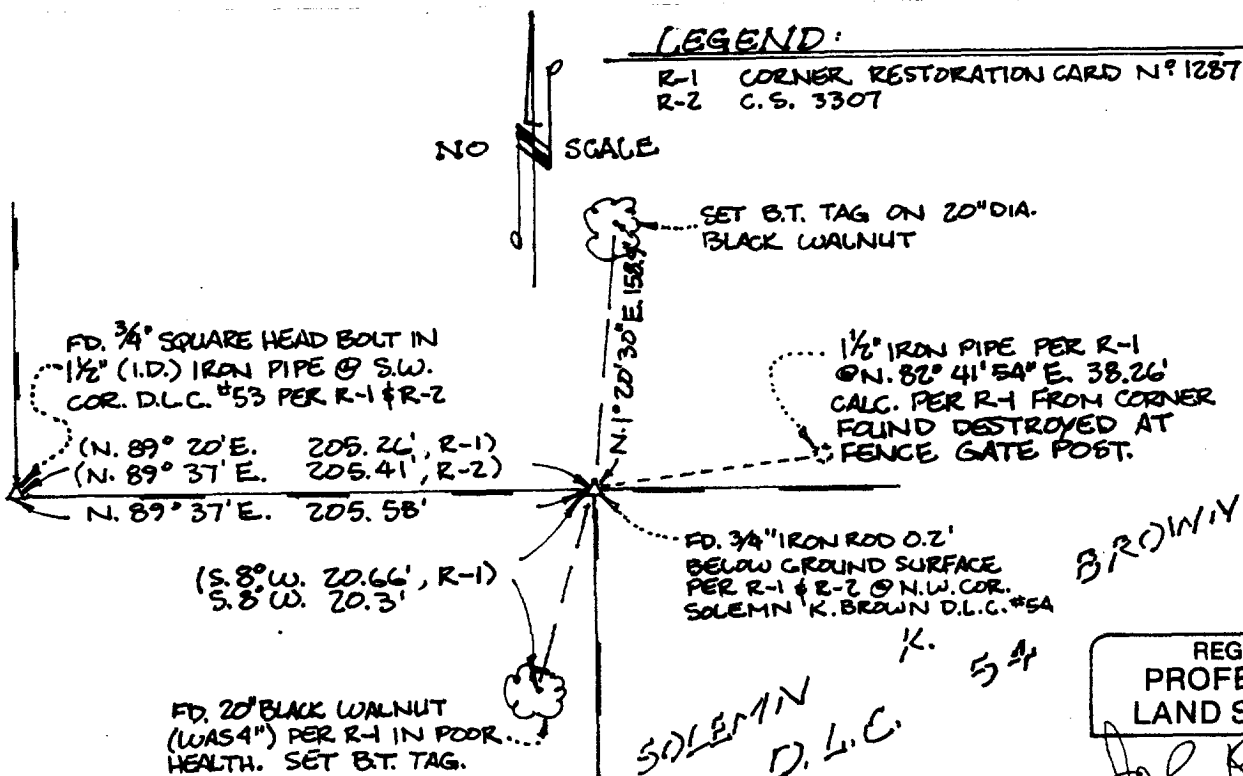
KIND	LEGIBLE MARKS ON BEARING OBJECTS		
	FOUND	FOUND	SET
		NONE	NONE
3/4" □ HEAD BOLT IN 1 1/2" IRON PIPE @ S.W. COR. D.L.C. #53	BLACK WALNUT	BLACK WALNUT	
SIZE	20"	20"	
BEARING	S. 89° 37' W.	S. 8° W.	N. 1° 20' 30" E.
DISTANCE	205.58'	20.3'	158.9'
BT TAG POSTED	NO	YES	YES

OVER

LEGEND:

R-1 CORNER RESTORATION CARD N° 1287
 R-2 C.S. 3307

NO SCALE



BROWN

SOLEMN K. BROWN D.L.C. #54

REGISTERED PROFESSIONAL LAND SURVEYOR

John Rinaldi, Jr.

OREGON
 JULY 15, 1983
 JOHN RINALDI, JR.
 2056

BENTON COUNTY SURVEYORS OFFICE - CORNER RESTORATION

3304

T 12 S, R 5 W, W. B. & M., BENTON COUNTY, OREGON

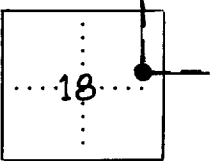
REPORTED BY JOHN RINALDI JR.

SECTION _____

SOUTHWEST CORNER
CHARLES BALES D.L.C. #53

TITLE BENTON COUNTY SURVEY CREW CHIEF

DATE JAN 7, 1985



● OFFICIAL CORNER FOUND
○ CORNER SET

CORNER COMMON TO SEC. _____ & _____

DESCRIBE

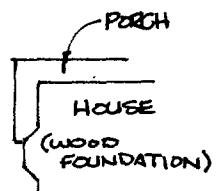
ADDITIONAL INFORMATION

FOUND 3/4" SQUARE HEAD BOLT IN 1/2" (I.D.) IRON PIPE PER CORNER RESTORATION CARD N° 1284 AND C.S. 3307, 0.3' BELOW GROUND SURFACE. NO ADDITIONAL BEARING OBJECTS PER SAID CORNER CARD WERE FOUND. MONUMENT WAS IN GOOD CONDITION AND LEFT IN PLACE.

LEGIBLE MARKS ON BEARING OBJECTS

	FOUND	SET		
KIND	IRON ROD	S.W. HOUSE CORNER		
SIZE	1/2"			
BEARING	N. 0° 12' 20" W.	N. 33° 12' 45" E.		
DISTANCE	18.01'	174.60'		
BT TAG POSTED	NO	NO		

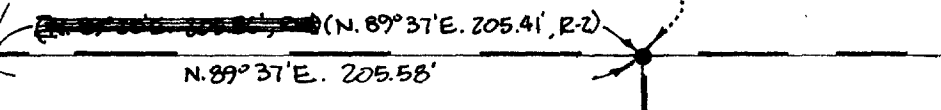
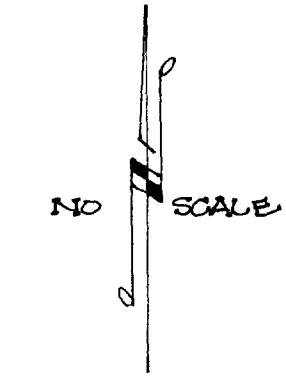
OVER



LEGEND:
 R-1 CORNER RESTORATION CARD N° 1284
 R-2 C.S. 3307

FD. 1/2" IRON ROD PER R-2.
 (N. 0° 09' W. 18.00', R-2)
 N. 0° 12' 20" W. 18.01'
 FD. 3/4" Ø HEAD BOLT IN 1 1/2" (I.D.) Ø S.W. COR. CHARLES BALES D.L.C. #53 PER R-1 & R-2.
 * IRON PIPE

FD. 3/4" IRON ROD PER R-2
 @ N.W. COR. SOLEMN BROWN D.L.C. #54.



REGISTERED
 PROFESSIONAL
 LAND SURVEYOR
John Rinaldi, Jr.
 OREGON
 JULY 15, 1983
 JOHN RINALDI, JR.
 2056

110570
1204
2204
3570
4207
3302
3569

CORNER HISTORY		T 12 S, R 5 W		SECTION 18 D.L.C. EIJAH LIGGETT NO. 52		CORNER CORNER INT NE		# 052020 ✓
NO.	DATE	SOURCE	SURVEYOR	MONUMENTS AND ACCESSORIES		COMMENTS		
1	8/27/1856	GLO	DENNIS HATHORN	? 2 BEARING TREES				1
2	NO DATE	FB 32 PAGE 61	BENTON COUNTY SURVEYORS OFFICE	SET 3/4" BOLT IN 1/4" PIPE IN 1 3/4" PIPE 1 OAK STUMP 4 BLACK WALNUTS		MISC. ON ROAD 1. 111 AT STREET BRIDGE AT MARKYS RIVER		2
4	11/05/1927	CR # 1284	W.C. GALLOWAY	SET 3/4" BOLT IN 1/4" PIPE IN 1 3/4" PIPE		1 OAK STUMP 4 WALNUT ST		3
5	"	REST. 1287	"	NO MON. DESC.				4
3	11/05/1927	OLD COR. REST. BOOK NO. 1 P. 106	W.C. GALLOWAY	FND. 1 BT SET 3/4" BOLT IN 1/4" PIPE IN 1 3/4" PIPE @ 5 B.O.'S				5
6	12/14/31	CS 1174	W.C. GALLOWAY	NO MONUMENT DESC.		FB 60 P 11		6
7	7/23/52	CS 2396	CURTIS C. HANSON	FD ROD				7
8	10/1/59	CS 3307	C.W. DANF	FND 3/4" BOLT IN 1/2" PIPE IN 1 3/4" PIPE				8
9	5/15/1967	CS # 4396	BEAT UDELL	NO MON. DESC.				9
10	9/17/73	CS 5566	VERIE C. MOORE	FND 1/4" PIPE WITH BOLT INSIDE				10
11	2/23/1978	CS # 6577	RICHARD FAIL	FND. 1/4" PIPE				11
12	11/1/1978	CS 6813	WALTER L CASWELL	FND 2" IP				12
13	11/7/1985	REST. 3302	JOHN RINALDI JR.	FND. 3/4" SQ. HD. BOLT				13
14	1/7/1985	CR 3304	JOHN RINALDI JR.	FND 3/4" SQUARE HEAD BOLT IN 1/2" PIPE				14
15	3/6/1989	REST. 3569	DANNA INGRAM-FEHR	FND. 1" SQ. HD. BOLT IN 1/4" PIPE IN 1 3/4" PIPE				15
16	3/10/89	CR 3570	DANNA INGRAM-FEAR	EN BACHER FND 1" SQUARE HEAD BOLT IN 1/4" PIPE IN 1 3/4" PIPE 1/2 FOOT BELOW GROUND SURFACE +28.0'				16
17	5/15/89	CS 8270	" " "	FND BOLT AS PER CR # 3304				17
								18
								19
								20
								21
								22
								23
								24
								25
								26
								27
								28
								29
								30
								31

CORNER

HISTORY

TOWNSHIP 12 SOUTH, RANGE 5 WEST, SECTION 18 ; D.L.C.: C. BALES

NO. 53

CORNER SW

(3570)

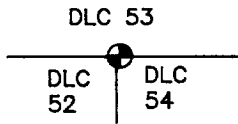
	DATE	CORNER RESTORATION No.	COUNTY SURVEY No.	SURVEYOR	MONUMENT	COMMENTS	
1	2/9/1854			D. HATHORN	?		1
2							2
3	11/27	1284		W.L. GALLOWAY	SET $\frac{3}{4}$ " BOLT IN A $1\frac{1}{2}$ " I.P.	FND. STUMP OF 1 B.T.; SET MORE	3
4					IN A $1\frac{3}{4}$ " I.P.		4
5	10/59		3307	C.W. DANE	" "		5
6							6
7	11/78		6813	W.L. CASWELL	FND 2" I.P.		7
8							8
9							9
10							10
11	1/7/1985	3304		J. RINALDI	FND $\frac{3}{4}$ " S.Q.H. BOLT IN $1\frac{1}{2}$ " I.P.	FND NO B.T.'S ; SET MORE	11
12							12
13							13
14	3/8/89	3570				REMAN	14
15							15
16							16
17							17
18							18
19							19
20							20
21							21
22							22
23							23
24							24
25							25
26							26
27							27
28							28
29							29
30							30
31							31

OREGON CORNER RESTORATION FORM

3569

SECTION 18 TOWNSHIP 12 S RANGE 5 W DLC 54 COR. NW BENTON COUNTY
 STATE PLANE COORD. OREGON NORTH ZONE N 325575.6739 E 1261423.7353
 DATE 3/6/89 GPS CARD # _____ GPS STA. # _____
 GPS SUITABILITY POSSIBLE

CORNER DESIGNATION: NORTHWEST CORNER _____ CONDITION REPORT ONLY
 OF THE SOLOMON K. _____ NOT FOUND
 BROWN DONATION XXX RENEWED
 LAND CLAIM NUMBER _____ UNRECORDED
 54 _____ SURVEYED IN
 _____ REFERENCED OUT



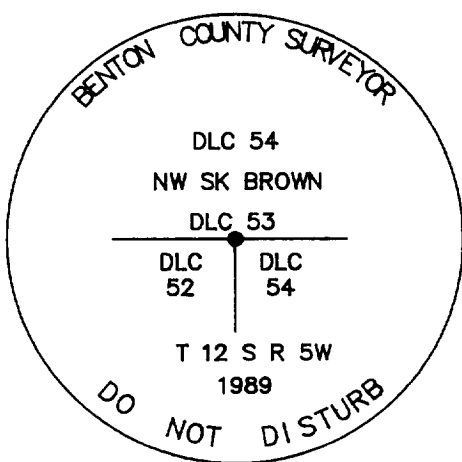
PREVIOUS RENEWALS/SURVEYS, ETC.:

CORNER RESTORATION NUMBER 1287 BY W.C. GALLOWAY 11/1927
 COUNTY SURVEY NUMBER 3307 BY C.W. DANE 10/1959
 CORNER RESTORATION NUMBER 3302 BY JOHN RINALDI 1/7/1985

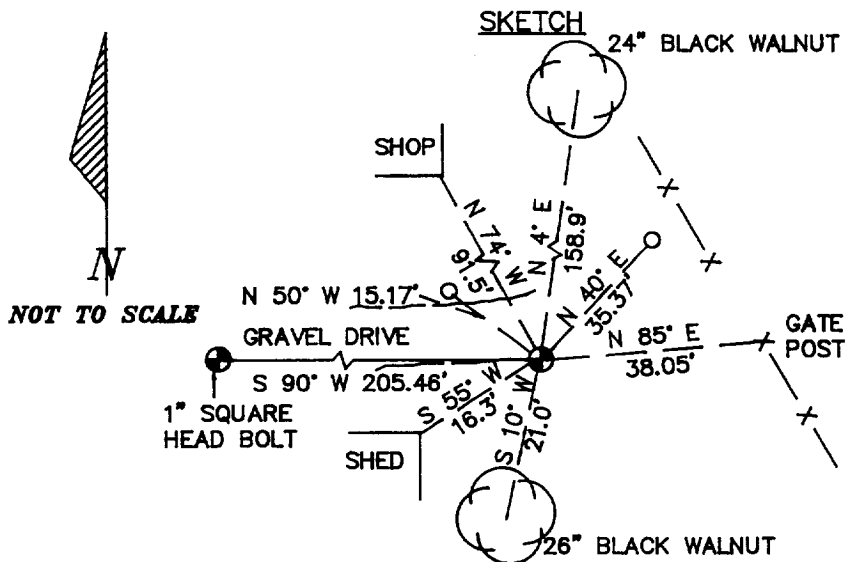
MONUMENTS AND ACCESSORIES FOUND (CONDITION AND SOURCE):

- FOUND: A 3/4" IRON ROD 0.3 FEET BELOW SURFACE. SET BY W.C. GALLOWAY AS THE CORNER IN 1927 FROM ONE OF THE ORIGINAL BEARING TREES, CORNER RESTORATION NUMBER 1287.
- FOUND: A BLACK WALNUT 24" IN DIAMETER, BEARS N 04° E 158.9 FEET, (N 01° 20' 30" E 158.9 FEET PER COR. REST. NO. 3302) WITH A B.T. TAG SET BY JOHN RINALDI IN 1985. REPLACED TAG.
- FOUND: A "DYING" BLACK WALNUT 26" IN DIAMETER, BEARS S 10° E 21.0 FEET, (S 08° W 20.3 FEET PER COR. REST. NO. 3302) WITH A B.T. TAG SET BY JOHN RINALDI IN 1985. REPLACED TAG.
- FOUND: A 1" SQUARE HEAD BOLT IN A 1 1/4" INSIDE DIAMETER IRON PIPE, IN A 1 3/4" INSIDE DIAMETER IRON PIPE, BEARS S 90° W 205.46 FEET, (S89° 37' W 205.58 FEET PER COR. REST. NO. 3302). RECOVERED BY JOHN RINALDI IN 1985.

MONUMENT DETAIL



3 1/4" BRASS CAP



MONUMENT SET (PROCEDURES AND DESCRIPTION):

SET A 2 3/8" (OUTSIDE DIAMETER) X 36" IRON PIPE WITH A 3 1/4" BRASS CAP, STAMPED AS SHOWN, OVER THE CENTER OF THE 3/4" IRON ROD 0.3 FEET BELOW SURFACE.

SET A ORANGE CARSONITE "SURVEY MARKER" SIGN POST 3.3 FEET SOUTHERLY OF CORNER.

NEW ACCESSORIES :

SET A 5/8" X 30" REBAR WITH A YELLOW PLASTIC CAP MARKED, "BENTON COUNTY SURVEYOR" 16" BELOW SURFACE BEARS N 50° W 15.17 FEET.

THE SOUTHEAST CORNER OF THE SHOP BEARS N 74° W 91.5 FEET.

SET A 5/8" X 30" REBAR WITH A YELLOW PLASTIC CAP MARKED "BENTON COUNTY SURVEYOR" 14" BELOW SURFACE BEARS N 40° E 35.37 FEET.

THE CENTER OF THE SOUTHERLY GATE POST ON A WIRE FENCE BEARS N 85° E 38.05 FEET.

THE NORTHEAST CORNER OF A WOOD SHED BEARS S 55° W 16.3 FEET.

NOTES: BCBW IS A BRASS WASHER STAMPED "BENTON COUNTY SURVEYOR'S OFFICE". ALL MEASURED DISTANCES ARE TO THE BCBW, ALL BEARINGS ARE COMPASS BEARINGS TO THE CENTER OF THE TREE. TREE DIMENSIONS ARE MEASURED DIAMETERS, UNLESS OTHERWISE NOTED.

LOCATION AND COMMENTS : COMPASS DECLINATION : 20° E

THE CORNER IS APPROXIMATELY 500' EAST OF BELLFOUNTAIN ROAD AND 400' SOUTH OF MARYS RIVER.

FIRM/AGENCY : BENTON COUNTY PUBLIC WORKS
ADDRESS: 360 S.W. AVERY AVE. CORVALLIS OR. 97333

PARTY CHIEF : CURTIS J. LIESENFELT

CREW:

WITNESS:

REGISTERED
 PROFESSIONAL
 LAND SURVEYOR

Danna L. Ingram-Fehrenbacher

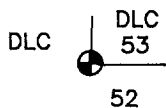
OREGON
 JULY 16, 1982
 Danna L. INGRAM-FEHNRENBACHER
 1995

OREGON CORNER RESTORATION FORM

3570

SECTION 18 TOWNSHIP 12 S RANGE 5 W DLC 53 COR. SW BENTON COUNTY
 STATE PLANE COORD. OREGON NORTH ZONE N 325580.3307 E 1261218.3191
 DATE 3/8/89 GPS CARD # _____ GPS STA. # _____
 GPS SUITABILITY POSSIBLE

CORNER DESIGNATION: SOUTHWEST CORNER _____ CONDITION REPORT ONLY
 CHARLES BALES _____ NOT FOUND
 DONATION LAND _____ RENEWED
 CLAIM NUMBER 53 _____ UNRECORDED
 _____ SURVEYED IN
 _____ XXX REFERENCED OUT



PREVIOUS RENEWALS/SURVEYS, ETC.:

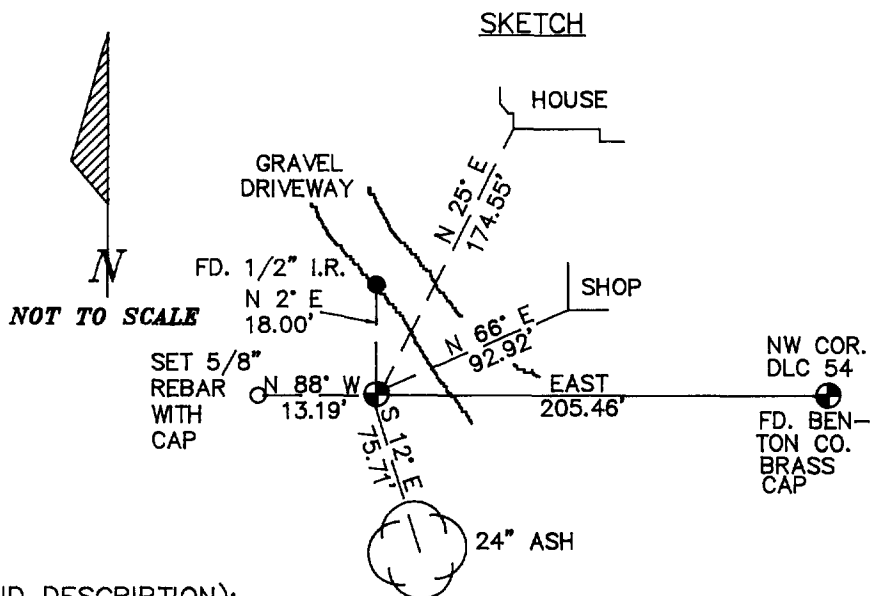
CORNER RESTORATION NUMBER 1284 BY W.C. GALLOWAY IN 1927
 COUNTY SURVEY NUMBER 3307 BY C.W. DANE IN 1959
 COUNTY SURVEY NUMBER 6813 BY W.L. CASWELL IN 1978
 CORNER RESTORATION NUMBER 3304 BY JOHN RINALDI IN 1985

MONUMENTS AND ACCESSORIES FOUND (CONDITION AND SOURCE):

FOUND: 1" SQUARE HEAD BOLT IN A 1 1/4" INSIDE DIAMETER IRON PIPE, IN A 1 3/4" INSIDE DIAMETER IRON PIPE, 0.5' BELOW SURFACE, SET BY W.C. GALLOWAY FROM THE STUMP OF AN ORIGINAL BEARING TREE. CORNER RESTORATION NUMBER 1284.

FOUND: THE SOUTHWEST CORNER OF THE HOUSE AS A BEARING OBJECT. BEARS N 25° E 174.55' FEET (N 23° 12' 45" E 174.60' PER COR. REST. NO. 3304).

FOUND: 1/2" IRON ROD AT GROUND SURFACE AS A BEARING OBJECT. BEARS N 2° E 18.00' FEET (N 0° 12' 20" W 18.01' PER COR. REST. NO. 3304).



MONUMENT SET (PROCEDURES AND DESCRIPTION):

FOUND A 1" SQUARE HEAD BOLT IN A 1 1/4" INSIDE DIAMETER IRON PIPE, IN A 1 3/4" INSIDE DIAMETER IRON PIPE, 0.5' BELOW SURFACE IN GOOD CONDITION, USED MONUMENT AS FOUND.
 SET AN ORANGE CARSONITE "SURVEY MARKER" POST 1.0 FEET NORTHEAST OF CORNER.

NEW ACCESSORIES :

24" ASH BEARS S 12° E 75.71 FEET. TREE IS BLAZED AND SCRIBED "DLC 53 BT". SET A PK AND B.C.B.W. TO THE SOUTHWEST BASE. NAILED A B.T. TAG TO THE NORTHWEST FACE.
 SET A 5/8" X 30" REBAR WITH A YELLOW PLASTIC CAP MARKED "BENTON CO. SURVEYOR" 12" BELOW SURFACE, BEARS N 88° W 13.19 FEET.
 SOUTHWEST CORNER OF SHOP BEARS N 66° E 92.92 FEET.
 NORTHWEST CORNER OF SOLOMON K. BROWN D.L.C. NO. 54 BEARS EAST 205.46 FEET.

NOTES: BCBW IS A BRASS WASHER STAMPED "BENTON COUNTY SURVEYOR'S OFFICE".
 ALL MEASURED DISTANCES ARE TO THE BCBW, ALL BEARINGS ARE COMPASS BEARINGS TO THE CENTER OF THE TREE. TREE DIMENSIONS ARE MEASURED DIAMETERS, UNLESS OTHERWISE NOTED.

LOCATION AND COMMENTS : CORNER IS LOCATED APPROXIMATELY 400 FEET SOUTH OF MARYS RIVER, AND 300 FEET EAST OF BELLFOUNTAIN ROAD.

COMPASS DECLINATION : 20° E
FIRM/AGENCY : BENTON COUNTY PUBLIC WORKS
ADDRESS : 360 S.W. AVERY AVE. CORVALLIS OR. 97333
PARTY CHIEF : CURTIS J. LIESENFELT
CREW :
WITNESS :

REGISTERED PROFESSIONAL LAND SURVEYOR
Danna L. Ingram-Fehrenbacher
 OREGON
 JULY 16, 1982
 DANNA L. INGRAM-FEHRNBACHER
 1995

TOWNSHIP 12 SOUTH, RANGE 5 WEST, WILLAMETTE MERIDIAN; SECTION 18 CORNER
DONATION LAND CLAIM ELIJAH LIGGETT NO. 52 _____ **CORNER INT NE**

COMMON CORNER(S):

THE SOUTHWEST CORNER OF CHARLES BALES DLC NO. 53.

UPDATES AND REVISIONS:

CHANGED THE CORNER NUMBER FROM 125852020H TO 125852060H ON NOVEMBER 1, 1995, BY MEA.

CORNER RECORDS (PREVIOUS RENEWALS, SURVEYS, ETC.)

- [01] ORIGINAL GLO SURVEY BY DENNIS HATHORN DATED AUGUST 27, 1856.
- [02] FIELD BOOK NO. 36, PAGE 61 BY BENTON COUNTY SURVEYOR'S OFFICE (NO DATE GIVEN).
- [03] OLD CORNER RESTORATION BOOK NO. 1 PAGE 186 BY W.C. GALLOWAY DATED NOVEMBER OF 1927.
- [04] CORNER RESTORATION NO. 1284 BY W.C. GALLOWAY DATED NOVEMBER OF 1927.
- [05] CORNER RESTORATION NO. 1287 BY W.C. GALLOWAY DATED NOVEMBER OF 1927.
- [06] COUNTY SURVEY NO. 1174 BY W.C. GALLOWAY DATED DECEMBER 14, 1931 (FIELD BOOK NO. 60, PAGE 11).
- [07] COUNTY SURVEY NO. 2396 BY CURTIS C. HANSON DATED JULY 23, 1952.
- [08] COUNTY SURVEY NO. 3307 BY C.W. DANE DATED OCTOBER OF 1959.
- [09] COUNTY SURVEY NO. 4396 BY BERT UDELL DATED MAY 15, 1967.
- [10] COUNTY SURVEY NO. 5566 BY VERLE MOORE DATED SEPTEMBER 17, 1973.
- [11] COUNTY SURVEY NO. 6577 BY RICHARD FAIL DATED FEBRUARY 23, 1978.
- [12] COUNTY SURVEY NO. 6813 BY WALTER L. CASWELL DATED NOVEMBER OF 1978.
- [13] CORNER RESTORATION NO. 3302 BY JOHN RINALDI JR. DATED JANUARY 7, 1985.
- [14] CORNER RESTORATION NO. 3304 BY JOHN RINALDI JR. DATED JANUARY 7, 1985.
- [15] CORNER RESTORATION NO. 3569 BY DANNA INGRAM-FEHRENBACHER DATED MARCH 8, 1989.
- [16] CORNER RESTORATION NO. 3570 BY DANNA INGRAM-FEHRENBACHER DATED MARCH 8, 1989.
- [17] COUNTY SURVEY NO. 8270 BY DANNA INGRAM-FEHRENBACHER DATED MAY 15, 1989.

COMMENTS/LOCATION/ETC:

RECORD [04] IS A TRANSCRIBED COPY OF RECORD [03] AND MAY CONTAIN ERRORS AND OMISSIONS.

NOTES:

THIS IS A MICROSOFT WORD (VERSION 5.0) DOCUMENT NAMED "25852020" CREATED FROM A BOILER PLATE DOCUMENT NAMED "HISTORY", WHICH HAS A STYLESHEET NAMED "CORNER" ATTACHED TO IT.

FIRM/AGENCY: BENTON COUNTY SURVEYOR'S OFFICE
ADDRESS: 360 S.W. AVERY AVE. CORVALLIS OR 97333; PH. 757-6821
RESEARCH BY: CURTIS J. LIESENFELT/MARK E. ANDERSON
DATA ENTRY BY: MARK E. ANDERSON