

C.S. 357
Dec. 4, 1931
W.C. Galloway
Emil E. Larkin
Stanley Tripp
Dean Strange

Section cor. to 13, 14, 23, & 24 T. 12 S. R. 7 W.
Set 1 1/4" galv. pipe from old trees as shown
Fir 6" in dia bears N. 77° 30' E. .488 chains face Std.
Alder 18" " " 586° E. .45 " orig date.
Fir 8" " " 515° W. .14 " snag.
" 12" " " 563° 30' W. .164 " "
Alder 6" " " N 36° W. .45 " at pr. level with cor.

C.S. 64
W.C. Galloway
Merle Gregg
Emil E. Larkin
Ray Redmond

1/4 Sec. cor. between sec's. 31 & 36 T. 13 N. S. 5 & 6 W.
Set a 1 1/4" pipe at fence
Oak stump 14" 589° E. .69 chains. stump
Fir 24" N. 88° W. .61 " standing
" 26" N. 84° E. .330 "

City Water Marks Survey
Walter W. Larson
Stanley Tripp
Dean Strange

N.E. corner of Sec. 30, T. 12 S. R. 6 W.
Set a 3/4" pipe - also a 3/4" pipe at 20 cor. 20.044 chs. S.
Fir 24" N. 44° W. .28 chains 60"
" 12" 553° W. .44 " "
" 6" N. 35° E. .140 " "
" 10" 513° E. .109 " "
" Fir 8" N. 47° E. .25 " "
" 14" 541° E. .51 " "

1/4 Sec. cor. on N. line of sec. 30 T. 12 S. R. 6 W.
Set 3/4" pipe
Fir 36" 531° W. .30 chains
Fir 28" 580° W. .42 "

Sec. corner N.W. of sec 30, T. 12 S. R. 6 W.
Set 3/4" pipe found old stake lying down.
Fir 24" S. 30° E. .525 chains
Fir 30" S. 14° E. .360 " standing
" 30" S. 24° W. .32 " "
" 30" N. 30° E. .96 " "

S.W. corner of Sec 30, T. 12 S. R. 6 W.
Set Pitch stake

Fir 18" N. 19° E. .290 chains
Maple 16" S. 55° W. .490 "

Hole in ground N. 65° W. .19 "

no other signs except old line blazes on Township line Orig.

C.S. # 121
by W.C. Galloway
Witnesses Geo. M. Cooper
Emile E. Larkin
and Ed. Woodmensee
Dec. 15, 1931

S.E. Cor. of Chas. Bales D.L.C. # 53 T. 12 S. R. 5 W. W.M.
Stone in place 1' West of fence 2' S. of yard gate East of house
A. King bell, corner 2.003 North and from King bell is a 1/2" staff West 3.772 chs.

Stone in place 1' west of fence 2' S of yard gate East of house
A Kingbolt, corner 2.003 north and from Kingbolt is a 1 1/2" shaft west 3.272 ch

Reestablishment by W. C. Galloway

December 15, 1931

S. E. corner of Charles Bales DC 53, Twp. 12 S., R. 5 W. M. M.
1285

CORNER HISTORY		T 12 S, R 5 W		SECTION 17 D.L.C. CHARLES BALES NO. 53		CORNER CORNER SE		# 853020
NO.	DATE	SOURCE	SURVEYOR	MONUMENTS AND ACCESSORIES		COMMENTS		
①	8/27/1856	DRIL. GLO	DENNIS HATHORN	STONE 1"x6"x18" @ 2 ASH + 1 OAK FOR BT'S		MEAS TO FACE		1
								2
②	11/13/1915	OLD CO. RD. NO. 316	BURT WILKES	STONE		RD BK #2 PGS. 2B7-2B8		3
								4
③	4/21/1911	CS # 228	J.A. GANDON	ORIGINAL		FB 7/6B		5
								6
④	11/25/1922	MAP NO. 12-5-0003B	" "	STONE @ KING BOLT N 1/4 + SHAFT NW 1/4		OLD CS # 118		7
								8
⑤	12/14/1931	CS # 1174	W.C. GALLOWAY	NO MOD. DESC.		FB 60/12		9
								10
⑥	12/15/1931	OLD COR. REST. BK #1 PG 19B	" "	STONE IN PLACE @ SOME ACES				11
								12
⑦	"	REST. 12B5	" "	" " " " " "		TRANS. COPY OF + MAP...		13
								14
⑧	NONE GIVEN	CS # 1175	" "	STONE				15
								16
⑨	12/18/1931	MAP NO. 12-5-00039	" "	" @ KING BOLT N 1/4 + SHAFT NW 1/4		OLD CS # 121		17
								18
⑩	1963	CS. RD. NO. 25271 27 88/100 SITE LINE	BEN. CO.	FND. STONE KING BOLT + SHAFT				19
								20
⑪	10/27/1988	REST. 3541	DANNA INGRAM FEHRENBALHER	FND 5"x6"x? STONE @ "x" + ACCEPTED D.N.F. KING BOLT				21
								22
⑫	3/18/1989	CS # 8272	" "	FND STONE AS PER REST. 3541		GEODETL VALUES		23
								24
								25
								26
								27
								28
								29
								30
								31

1-198
12B5
3541
25271

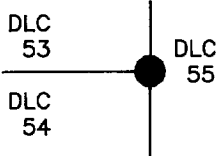
OREGON CORNER RESTORATION FORM

3541

SECTION SE DLC 53 TOWNSHIP 12 S RANGE 5 W

COUNTY BENTON DATE 10/27/1988

CORNER DESIGNATION



SOUTHEAST CORNER
OF THE CHARLES
BALES DONATION LAND
CLAIM No. 53

_____	CONDITION REPORT ONLY
_____	NOT FOUND
_____	RENEWED
_____	UNRECORDED
_____	SURVEYED IN
<u>XXXX</u>	REFERENCED OUT

PREVIOUS RENEWALS/SURVEYS, ETC:

CORNER RESTORATION NUMBER 1285 DECEMBER 15, 1931 BY W. C. GALLOWAY.
GALLOWAY HARDCOPY NUMBER 12-5-00038.

MONUMENTS AND ACCESSORIES FOUND (CONDITION AND SOURCE):

FOUND: A 5" x 6" x 1" STONE 5" BELOW SURFACE SET FIRMLY IN THE GROUND.
ORIGINAL CORNER SET BY THE GLO AND WAS FOUND AND USED AS THE CORNER IN CORNER RESTORATION NUMBER 1285. DID NOT FIND THE KINGBOLT CALLED FOR IN CORNER RESTORATION NUMBER 1285. THERE IS AN "X" IN THE TOP OF THE STONE, BUT IT IS NOT CALLED OUT IN THE GLO NOTES OR GALLOWAY'S CORNER RESTORATION.

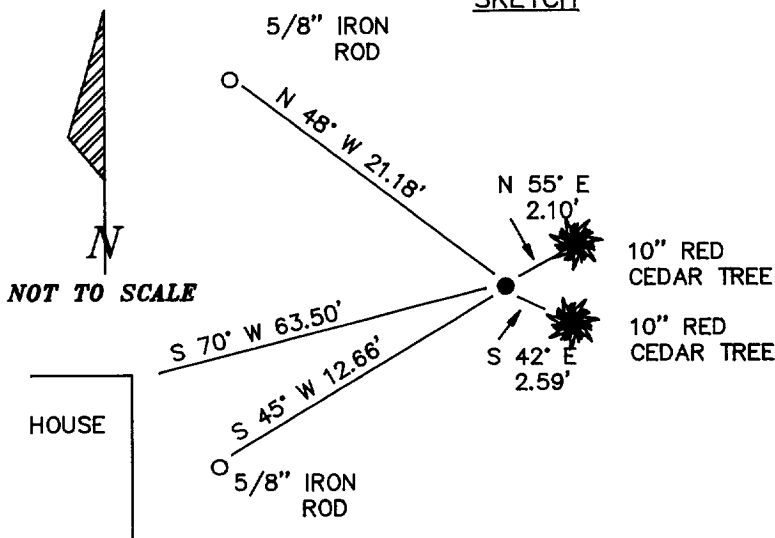
A 2 STORY HOUSE BEARS S 70° W 63.50' DISTANCE TO THE NORTHEAST CORNER OF THE HOUSE.

NOTE: BOTH RED CEDAR TREES WERE NOT BLAZED OR SCRIBED AND THERE WERE NOT ANY BEARING TREE TAGS POSTED PER THE REQUEST OF THE LANDOWNER.

MONUMENT DETAIL



SKETCH



MONUMENT SET (PROCEDURES AND DESCRIPTION):

LEFT STONE IN PLACE. A WHITE FIBER GLASS POST IS 0.30' NORTHWEST OF THE CORNER.

NEW ACCESSORIES :

A 5/8" x 30" IRON ROD 10" BELOW SURFACE WITH A YELLOW PLASTIC CAP MARKED "BENTON COUNTY SURVEYOR" BEARS N 48° W 21.18' DISTANCE.

A 5/8" x 30" IRON ROD 11" BELOW SURFACE WITH A YELLOW PLASTIC CAP MARKED "BENTON COUNTY SURVEYOR" BEARS S 45° W 12.66' DISTANCE.

A RED CEDAR TREE 10" IN DIAMETER (NO MARKS ON TREE) BEARS N 55° E 2.10' DISTANCE. NAILED A BCBW TO THE WEST BASE.

A RED CEDAR TREE 10" IN DIAMETER (NO MARKS ON TREE) BEARS S 42° E 2.59' DISTANCE. NAILED A BCBW TO THE WEST BASE.

NOTES: BCBW IS A BRASS WASHER STAMPED "BENTON COUNTY SURVEYOR'S OFFICE". ALL MEASURED DISTANCES ARE TO THE BCBW, ALL BEARINGS ARE COMPASS BEARINGS TO THE CENTER OF THE TREE. TREE DIMENSIONS ARE MEASURED DIAMETERS, UNLESS OTHERWISE NOTED.

LOCATION AND COMMENTS : CORNER IS APPROXIMATELY 213 FEET EAST OF THE CENTER OF 53 RD STREET COUNTY ROAD NUMBER 25270.

COMPASS DECLINATION : 20° E
FIRM/AGENCY : BENTON COUNTY PUBLIC WORKS
ADDRESS : 360 S.W. AVERY AVE. CORVALLIS OR. 97333
PARTY CHIEF : RAYMOND E. WILSON
NOTES : ANDREW FOSTER
WITNESS :

REGISTERED PROFESSIONAL LAND SURVEYOR
Danna L. Ingram-Fehrenbacher
OREGON
JULY 16, 1982
DANNA L. INGRAM-FEHNRENBACHER
1995

BENTON COUNTY CORNER HISTORY FORM, PAGE 1 OF 1,

125853020H

DATE 01/04/1996

TOWNSHIP 12 SOUTH, RANGE 5 WEST, WILLAMETTE MERIDIAN; SECTION 17 CORNER
DONATION LAND CLAIM CHARLES BALES NO. 53 CORNER SE

COMMON CORNER(S):

THE NORTH-NORTHEAST CORNER OF THE SOLOMON K. BROWN DLC NO. 54.

THE WEST LINE OF THE HIRAM ALLEN DLC NO. 55.

UPDATES AND REVISIONS:

CORNER RECORDS (PREVIOUS RENEWALS, SURVEYS, ETC.)

- [01] ORIGINAL GLO SURVEY BY DENNIS HATHORN DATED AUGUST 27, 1856.
- [02] OLD COUNTY ROAD NO. 316 BY BURT WILKES DATED JANUARY 13, 1915 (ROAD BOOK NO. 2, PAGES 287-288).
- [03] COUNTY SURVEY NO. 228 BY J.A. GANONG DATED APRIL 21, 1911 (FIELD BOOK NO. 7, PAGE 68).
- [04] MAP NO. 12-5-00038 BY J.A. GANONG DATED JANUARY 25, 1922.
- [05] COUNTY SURVEY NO. 1174 BY W.C. GALLOWAY DATED DECEMBER 14, 1931 (FIELD BOOK NO. 60, PAGE 12).
- [06] OLD CORNER RESTORATION BOOK NO. 1, PAGE 198 DATED DECEMBER 15, 1931.
- [07] CORNER RESTORATION NO. 1285 BY W.C. GALLOWAY DATED DECEMBER 15, 1931.
- [08] COUNTY SURVEY NO. 1175 BY W.C. GALLOWAY (NO DATE GIVEN).
- [09] MAP NO. 12-5-00039 BY W.C. GALLOWAY DATED DECEMBER 18, 1931.
- [10] COUNTY ROAD NO. 25271, ROUTE NO. 27, BRIDGE SITE P-LINE BY BENTON COUNTY SURVEYOR'S OFFICE DATED 1963.
- [11] CORNER RESTORATION 3541 BY DANNA INGRAM FEHRENBACHER DATED OCTOBER 27, 1988.
- [12] COUNTY SURVEY NO. 8272 BY DANNA INGRAM FEHRENBACHER DATED MARCH 16, 1989.

COMMENTS/LOCATION/ETC:

THE SURVEYOR OF RECORD [01] MEASURED DISTANCES TO THE FACE OF BEARING TREES.

RECORD [07] IS A TRANSCRIBED COPY OF RECORD [06] AND MAY CONTAIN ERRORS AND OMISSIONS.

SEE RECORD [12] FOR GEODETIC VALUES.

NOTES:

THIS IS A MICROSOFT WORD (VERSION 5.0) DOCUMENT NAMED "25853020" CREATED FROM A BOILER PLATE DOCUMENT NAMED "HISTORY", WHICH HAS A STYLESHEET NAMED "CORNER" ATTACHED TO IT.

FIRM/AGENCY: BENTON COUNTY SURVEYOR'S OFFICE
ADDRESS: 360 S.W. AVERY AVE. CORVALLIS OR 97333; PH. 757-6821
RESEARCH BY: CURTIS J. LIESENFELT/MARK E. ANDERSON
DATA ENTRY BY: ROSE LINDGREN