

120 ✓ S.E. cor. of John Rodgers D. L. C. # 66 Tp 10-4
 set 1 1/4" pipe plug into
 service 7" in dia. bears N. 23° 40' W. .863'
 Witnesses Jan. 30, 1911.

120 ✓ 1/4 sec. cor. between secs. 7+18, Tp. 10-4
 set 1" steel shaft. stump + stump hole.
 Oak 7" in dia. bears S. 37° W. .123
 " 10" " " " N. 63° 10' W. .242
 Witnesses E. A. Thurston. Jan. 1, 1912.

121 ✓ S.E. cor. of Elias Newcomb's D. L. C. # 52 Tp. 12-5.
 set 1" pipe stump std. kinghole in old stump hole.
 Oak 10" in dia. bears N. 83° 12' E. 3.660'
 " 16" " " " S. 40° 50' E. .977'
 Witnesses J. A. Parks + ~~James~~ Cooper. Jan. 16, 1912

121 ✓ N.E. cor. of Chas. Bates. D. L. C. # 53 Tp. 12-5
 Binder - lumber 2"x2"
 Oak 16" in dia. bears N. 40° 10' E. .717'
 " 20" " " " West .808'
 Witnesses J. A. Parks + Geo. Cooper. Jan. 16, 1912.

123 ✓ Cor. 45.549' N. 59° 43' W. of N.E. cor. of John Trapp's D. L. C. # 56 Tp. 11-5.
 Stone already set. Ash stump S. 70° E. .46' (Pipe N. 20
 Pipe S. 20)
 Oak 6" in dia. bears S. 50° 45' E. .770'
 " 18" " " " N. 56° 20' W. .634'
 Witnesses M. A., J. E., J. A. + W. E. Wyatt. Jan. 27, 1912.

146 ✓ S.W. cor. Jacob J. Hatter D. L. C. # 73 Tp. 10-5. N. 4. V. 16 W.
 set 30x4x11" oak stake for cor. from which
 " oak 10" dia. bears S 2° 15' W. 29.1 lbs. dist.
 S.E. original tree stg. + W. stump. 20 1912

S.E. cor. Jacob J. Hatter D. L. C. # 73 10 4
 set 30x4x11" oak stake for cor. from which
 " oak 10" dia. bears N 35° 40' E 112.2 lbs. dist.
 " 10" " " " N 64° 30' E 100 " "
 both original tree gone. stumps left. 25 1912

✓ S.W. cor. Wm. Harrison Johnson D. L. C. # 63 10-4
 set stone 10x10x8" for cor. from which
 " oak 10" dia. bears N 4° W 42.5 lbs. dist.
 " 17 " " " 87° 35' N 35.5 " "
 both original tree gone. 21-1912

S.E. cor. of Sta. 44 of sec. 44 Tp. 11. C. N. 1 V. 11 W
 set Oak west 38° 30' E for cor. from which
 " oak 20" dia. bears S 47° 35' E 10 lbs. dist.
 " 7 " " " 50° 10' W 10.6 " "

MM
Northeast corner of Charles Bates D1C 53, Twp 12-5

1283

Reestablishment by W. C. Galloway

January 16, 1912

Binder tubing 2" x 2"

Oak 16" in diam bears N. 40° 10' E
Oak 20" in diam bears West

.717 chains
.808 chains

Witnesses J. A. Parks and George Cooper

END: 2" SQ. IRON TUBE 7" Ø FOR THE COR. (COR REST NO. 1283)

" 1/2" I.O.I.P. 2" Ø. G.S. Y IN THE SHAKE HORIZ. POSITION AS THE RECOVERED 2" SQ. TUBE (CS#5549)

" AN ORK 37" IN DIA. BEARS N40°45' E L 47.32' (N 40°10' E L 47.32' (COR REST. NO. 1283) SET A PK + B.C. Ø. W. IN THE SE 1/4 BASE. SET A B.T. TAB ON THE TAB ON THE SW 1/4 FACE.

" AN ORK 32" IN DIA. BEARS N 90° W L 53.33'. (WEST ~ 53.33' COR. REST. NO. 1283) SET A PK + B.C. Ø. W. IN THE N 1/4 BASE. SET A B.T. TAB ON THE E 1/4 FACE

" 5/8" REBAR @ THE TOP 6" Ø ENT. 0.15' N 1/4 THE STRAIGHT BASE BEARS MS 89° W ~ 35.45' (WEST ~ 35.87 CS # 4867)

NO OTHER RECORD BEARING OBJECTS WERE RECOVERED

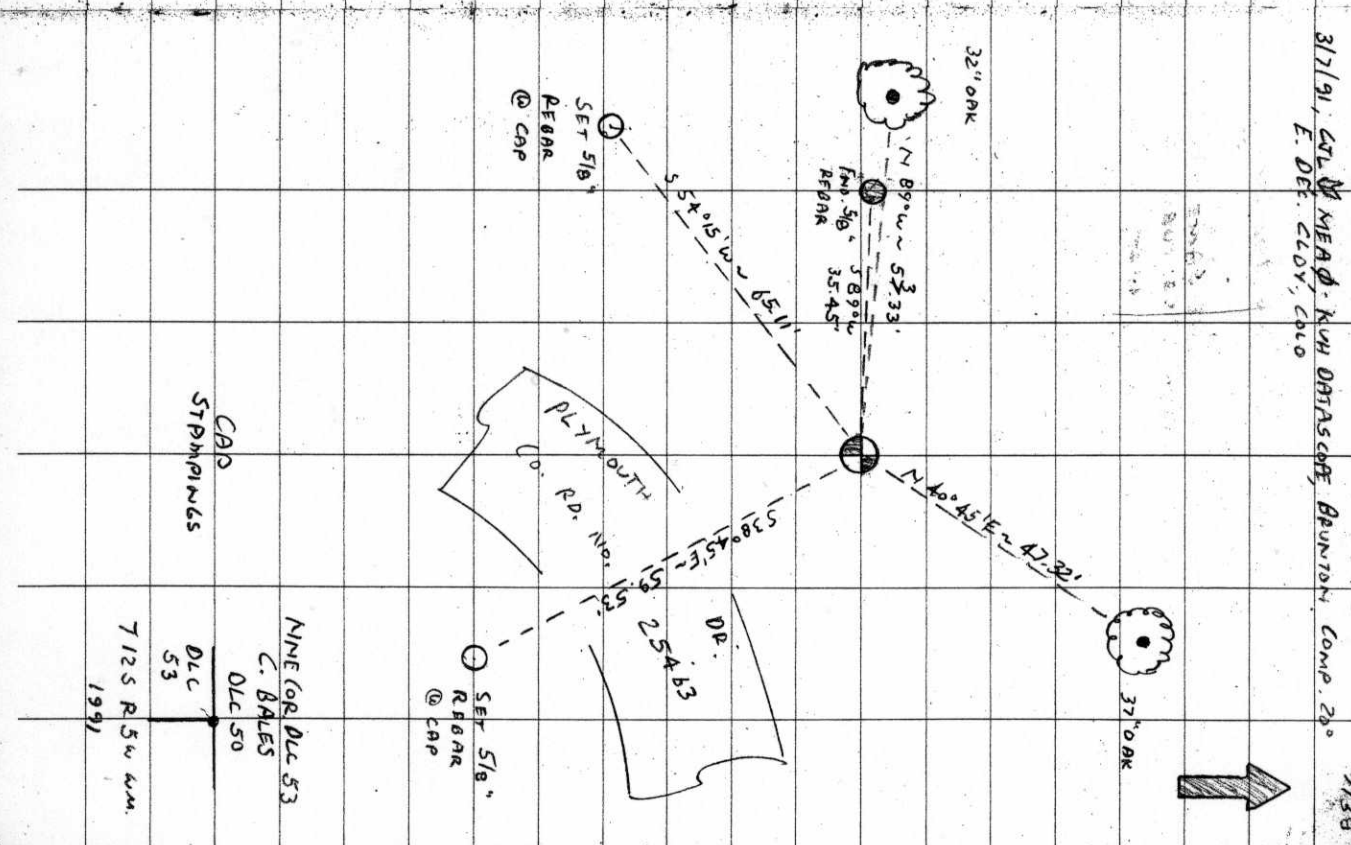
SET: 3/4" BEN. CO. B.C. STRAPPED AS SHOWN IN THE CTR. OF THE RECOVERED 2" SQ. IRON TUBE. DROPPED THE RECOVERED 1/2" PIPE INTO THE GASE OF THE TUBE SET A SLIP TYPE MON. BOX OVER THE B.C. @ THE TOP OF THE BOX 2" Ø. G.S.

SET: 5/8" X 30" REBAR @ A.Y.P.C. MARK. 'BENTON COUNTY SURVEYOR' Ø" Ø. G.S. BEARS S 30° 45' E L 59.53' THE REBAR IS IN THE TOP BACK OF THE ROAD-SIDE DITCH BANK.

" 5/8" X 30" REBAR @ A.Y.P.C. MARK. 'BENTON COUNTY SURVEYOR' Ø" Ø. G.S. BEARS S 54° 15' W L 65.11' THE REBAR IS 8' SE 1/4 FROM THE E. OF THE ROAD SIDE DITCH.

SET: ORANGE FIBERGLASS "SURVEY MARKER" POST IS N 1/4

THE COR IS LOCATED IN A GRAVE. PULOUT 23' N W 1/4 FROM THE NW COR. IN ORY MOUTH DR. (CO. RD. NO. 25483). IT IS GOOD FOR PERMANENTLY MARKING + GCS CONTROL.



32" ORK

37" ORK

SET 5/8" REBAR @ CAP

SET 5/8" REBAR @ CAP

PLYMOUTH Co. Rd. No. 25483

OR.

DR.

25483

530° 45' E L 59.53'

589° W L 35.45'

589° W L 35.45'

89° W L 53.33'

N 40° 45' E L 47.32'

54° 15' W L 65.11'

30° 45' E L 59.53'

ORANGE FIBERGLASS "SURVEY MARKER" POST IS N 1/4

CAP

STEPHENS

NINE COR. DEC 53

C. BALES

DEC 50

7125 R5W 4W.

1991

BENTON COUNTY CORNER RESTORATION FORM

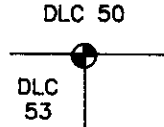
125853050

3894

TOWNSHIP 12 S RANGE 5 W SECTION 8 D.L.C. CHARLES BALES NO. 53 CORNER N-NE
 DATE 3/7/91 CORNER RESTORATION FIELD BOOK NUMBER 9 PAGE(S) 38

CORNER DESIGNATION:

THE NORTH-NORTHEAST CORNER OF THE CHARLES BALES
 DLC NO. 53, IN T 12 S, R 5 W, WILLAMETTE MERIDIAN.



- CONDITION REPORT ONLY
- REFERENCED OUT
- RENEWED
- SURVEYED IN

LOCATION AND COMMENTS:

THE CORNER IS LOCATED IN A GRAVEL PULLOUT 23 FEET NORTHWESTERLY FROM THE NORTHWEST FOG LINE ON PLYMOUTH DRIVE (COUNTY ROAD NO. 25463).

PREVIOUS RENEWALS/SURVEYS, ETC:

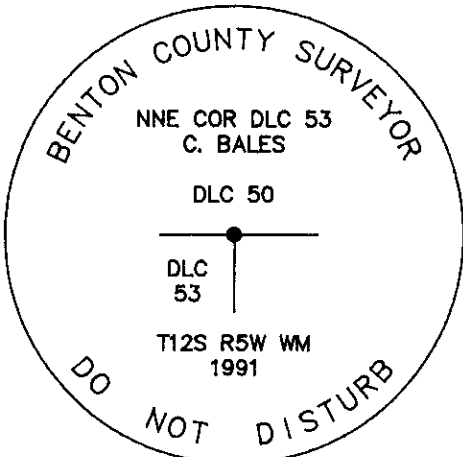
- ORIGINAL GLO SURVEY BY DENNIS HATHORN DATED 1856.
- OLD CORNER RESTORATION BOOK NO. 1 PAGE 28 BY W.C. GALLOWAY DATED JANUARY 16, 1912.
- CORNER RESTORATION NO. 1283 BY W.C. GALLOWAY DATED JANUARY 16, 1912.
- MAP NO. 12-5-00025 BY W.C. GALLOWAY DATED NOVEMBER 17, 1919.
- COUNTY SURVEY NO. 1954 BY W.C. GALLOWAY DATED NOVEMBER 4, 1947.
- COUNTY SURVEY NO. 2853 BY J.W. HANNA DATED DECEMBER 14, 1956.
- COUNTY SURVEY NO. 4867 BY TOM O. McCULLOUGH DATED JANUARY OF 1970.
- COUNTY SURVEY NO. 5547 BY FRED LEMKE DATED OCTOBER 24, 1973.

MONUMENTS AND ACCESSORIES FOUND (CONDITION AND SOURCE):

- FOUND: 2" SQUARE IRON TUBE 7" BELOW GROUND SURFACE FOR THE CORNER (CORNER RESTORATION NO. 1283).
- FOUND: 1/2" INSIDE DIAMETER IRON PIPE 2" BELOW GROUND SURFACE IN THE SAME POSITION AS THE RECOVERED 2" SQUARE TUBE (COUNTY SURVEY NO. 5547).
- FOUND: AN OAK 37" IN DIAMETER BEARS N 40° 45' E 47.32 FEET (N 40° 10' E 47.32 FEET CORNER RESTORATION NO. 1283). SET A PK NAIL AND B.C.B.W. IN THE SOUTHEASTERLY BASE. SET A B.T. TAG ON THE SOUTH-WESTERLY FACE.
- FOUND: AN OAK 32" IN DIAMETER BEARS N 89° W 53.33 FEET (WEST 53.33 FEET CORNER RESTORATION NO. 1283). SET A PK NAIL AND B.C.B.W. IN THE NORTHERLY BASE. SET A B.T. TAG ON THE EASTERLY FACE.
- FOUND: 5/8" REBAR WITH THE TOP 6" BENT 0.15 FOOT NORTHERLY, THE STRAIGHT BASE BEARS S 89° W 35.45 FEET (WEST 35.87 FEET COUNTY SURVEY NO. 4867).

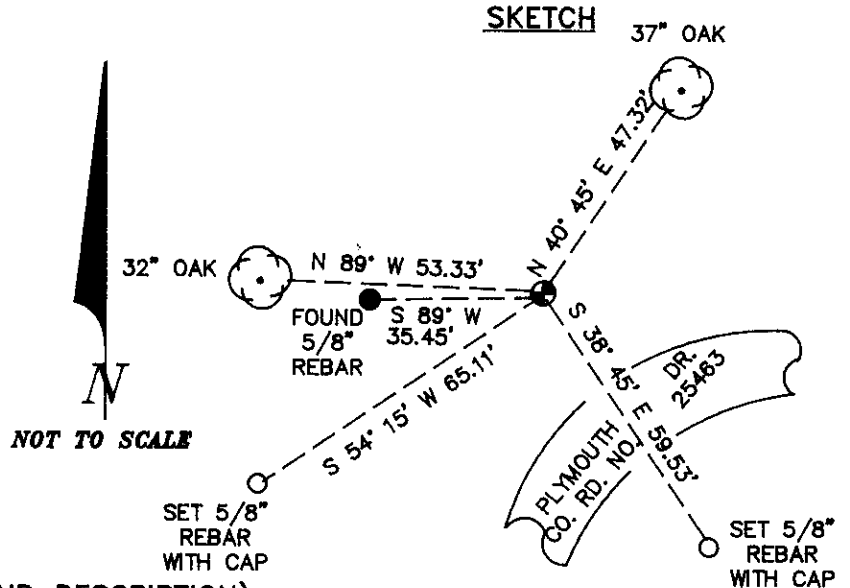
NO OTHER RECORD BEARING OBJECTS WERE RECOVERED.

MONUMENT DETAIL



3 1/4" BRASS CAP

SKETCH



MONUMENT SET (PROCEDURES AND DESCRIPTION):

SET: 3 1/4" BENTON COUNTY BRASS CAP, STAMPED AS SHOWN, IN THE CENTER OF THE RECOVERED 2" SQUARE IRON TUBE. DEPOSITED THE RECOVERED 1/2" PIPE INTO THE BASE OF THE SQUARE TUBE. SET A SLIP TYPE MONUMENT BOX OVER THE BRASS CAP WITH THE TOP OF THE BOX 2" BELOW GROUND SURFACE.

NEW ACCESSORIES:

- SET: 5/8" X 30" REBAR WITH A YELLOW PLASTIC CAP MARKED "BENTON COUNTY SURVEYOR" 8" BELOW GROUND SURFACE, BEARS S 38° 45' E 59.53 FEET. THE REBAR IS IN THE TOP OF THE ROADSIDE DITCH BANK.
- SET: 5/8" X 30" REBAR WITH A YELLOW PLASTIC CAP MARKED "BENTON COUNTY SURVEYOR" 8" BELOW GROUND SURFACE, BEARS S 54° 15' W 65.11 FEET. THE REBAR IS 8 FEET SOUTHEASTERLY FROM THE FLOWLINE OF THE ROADSIDE DITCH.
- SET: ORANGE FIBERGLASS "SURVEY MARKER" POST 15 FEET NORTHERLY.

NOTES:

B.C.B.W. IS A BRASS WASHER STAMPED "BENTON COUNTY SURVEYOR". COMPASS DECLINATION IS 20° EAST. ALL MEASURED DISTANCES AND COMPASS BEARINGS ARE TO THE CENTER OF THE OBJECT, UNLESS OTHERWISE NOTED.

THIS RESTORATION WAS PERFORMED AT THE DIRECTION AND APPROVAL OF THE BENTON COUNTY SURVEYOR. *[Signature]*

FIRM/AGENCY: BENTON COUNTY SURVEYOR

ADDRESS: 360 S.W. AVERY AVE. CORVALLIS OR. 97333; PH. 757-6821

SURVEY CREW: CURTIS J. LIESENFELT & MARK E. ANDERSON

WITNESS:

REGISTERED
 PROFESSIONAL
 LAND SURVEYOR

Curtis J. Liesenfelt

OREGON
 JULY 17, 1986
 CURTIS J. LIESENFELT
 2213