

C.S. # Miscel. S.E. cor. of Jas. L. Mulkey's D.L.C. #63, Tp. 11 S. TR. 5 W.
 Set 1 1/2" pipe
 Stone ~~at~~ S.W. cor. of S.M. Strout's D.L.C. #48 bears North 4.975 chs.
 Witness Robinson May 2, 1912.

" #60 1/4 sec. cor. on south side of sec. 33 Tp. 14 S. TR. 5 W. C.S.

Set 3/4" galvanized pipe
 Apple 12" in dia. bears N 60° E. 038 chs.
 Witness Edd Kay & W.A. Van May 8, 1912.

" 1/4 sec. cor. bet. secs. 32 & 33 Tp. 14-5

Set 3/4" galvanized pipe stump std.
 Oak 4" in dia. bears N 31° 18' E. 3963 chs.
 " 5" " " N. 47° 33' W. 3710 "

Witnesses Edd Kay & W.A. Van May 8 1912.

" N.E. cor. of Robert B. Boyd's D.L.C. #67 Tp. 14-5.

Set 4" x 4" x 20" casting with o. hole in top. found part of stone
 Witness Edd Kay & W.A. Van May 8, 1912.

" Interior cor. of Robert B. Boyd's D.L.C. #67 Tp. 14-5

Set 3/4" galvanized pipe 12" under surface.
 Stone for sec. cor. bears 10.25 chs. West.
 Witness Edd Kay and W.A. Van May 9, 1912.

" 1/4 sec. cor. between secs. 29 & 32 Tp. 14-5.

Set 3/4" galvanized pipe 10" under surface
 Apple tree 1/2" in dia. bears S. 24° 50' E. 389 chs.
 " " 1/2" " " S. 60° 20' E. 714 "

Witnesses Edd Kay & W.A. Van May 10, 1912.

" 1/4 sec. cor. on south side of sec. 32 Tp. 14-5

Set stone 7" x 10" x 18" 14" under surface. (#0.13 chs. from cor. East)

Pear tree N. 64° 30' E. 379 chs. dist.

" " S. 82° 30' E. 086 " "

" " S. 88° 30' W. 369 " "

" " N. 32° 30' W. 258 " "

Witnesses Edd Kay & W.A. Van May 9, 1912.

" 118 Int. cor. of Hiram Allen's D.L.C. #55 Tp. 12 S. TR. 5 W.

Set 1" iron rod stump std.
 Oak 18" in dia. bears N. 43° E. 458 chs.
 " 18" " " N. 54° W. 312 "

Witnesses Olly Dams, Frederick & W.A. Monte May 15, 1912.

" " Most S. S.W. cor. of Hiram Allen's D.L.C. #55 Tp. 12-5.

Set a 1 1/2" galvanized pipe oak stump hole with chared wood.
 Oak 8" in dia. bears N. 84° E. 708 chs.
 " 24" " " N. 24° W. 197 " std.

Witnesses O. Dams, F. & W.A. Monte May 15, 1912.

Interior corner of Hiram Allen's DLC 55, Twp 12 S R 5 W

1293

Reestablishment by W. C. Galloway

May 15, 1912

Set 1" iron rod	stumps standing
Ash 18" in diam bears N. 43° E	.458 chains
Ash 18" in diam bears N. 54° W	.312 chains

Witnesses Olley Davis, Frederick and William Monta

CORNER HISTORY		T 12 S, R 5 W		SECTION 20 D.L.C. SOLOMON K. BROWN NO. 54		CORNER CORNER E-NE		#854010
NO.	DATE	SOURCE	SURVEYOR	MONUMENTS AND ACCESSORIES			COMMENTS	
①	8/27/1856	ORIL 660	DENNIS HATHORN	SET POST @ 3 ASH BT'S			MEAS. TO FACE	1
								2
②	5/5/1912	CS # 311	W.C. GALLOWAY	SET 1" I. ROD @ 2 ASH BT'S			FB 12/34	3
								4
③	"	OLD COR. REST. BK. #1, PL. 36	" "	STUMPS STD. SET 1" I. ROD @ 2 ASH BT'S				5
								6
④	"	REST. 1293	" "	" " " " " " " "			TRANS. COPY OF ③ & MAY...	7
								8
⑤	1/25/1922	MAP NO. 12-5-00038	" "	1" I. ROD @ 2 ASH BT'S				9
								10
⑥	12/18/1931	MAP NO. 12-5-00039	" "	NO MON. OFSC.				11
								12
⑦	9/1941	MAP NO. 12-5-00041	BEN. CO.	1" I. ROD				13
								14
⑧	1/31/1946	CO. RB. NO. 25271, RD. NO. 635 MAP	W.C. GALLOWAY	NO MON. OFSC.				15
								16
⑨	9/6/1988	REST. # 3533	JANNA INGRAM FEHRENBACHER	FND. 1" I. ROD + 2 ASH BT'S, SET BC @ 2 ACRES.				17
								18
⑩	3/16/1989	CS # 8272	" "	FND. 3 1/4" BC AS PER REST. 3533			GEODETIC VALVES	19
								20
								21
								22
								23
								24
								25
								26
								27
								28
								29
								30
								31

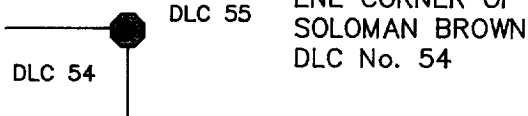
L-36
1243
3533

OREGON CORNER RESTORATION FORM

SECTION ENE DLC 54 TOWNSHIP 12 S RANGE 5 W

COUNTY BENTON DATE 9/6/1988

CORNER DESIGNATION



- CONDITION REPORT ONLY
- NOT FOUND
- XXXX RENEWED
- UNRECORDED
- SURVEYED IN
- REFERENCED OUT

**REGISTERED
PROFESSIONAL
LAND SURVEYOR**

Danna L. Ingram-Fehrenbacher

OREGON
JULY 16, 1982
DANNA L. INGRAM-FEHRNBACHER
1995

PREVIOUS RENEWALS/SURVEYS, ETC.:

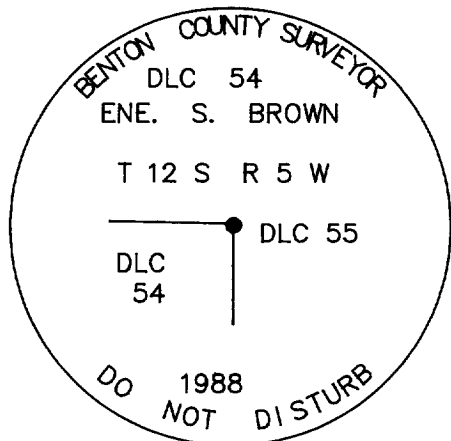
CORNER RESTORATION NUMBER 1293 5/15/1912 BY W.C. GALLOWAY.
GALLOWAY HARDCOPY 12-5-00038.

MONUMENTS AND ACCESSORIES FOUND (CONDITION AND SOURCE):

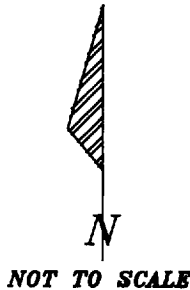
FOUND: AN ASH TREE 36" IN DIAMETER BEARS N 42° E 30.54'
(N 43° E 30.23' PER CORNER REST. No. 1293). TREE IS IN
POOR CONDITION, NO MARKS FOUND ON TREE. NAILED A BCBW TO
THE NORTHWEST BASE.

FOUND: AN ASH TREE 36" IN DIAMETER BEARS N 55° W 20.38'
(N 54° W 20.59' PER CORNER REST. No. 1293). TREE IS IN
POOR CONDITION. NO MARKS FOUND ON TREE. NAILED A BCBW
TO THE EAST BASE.

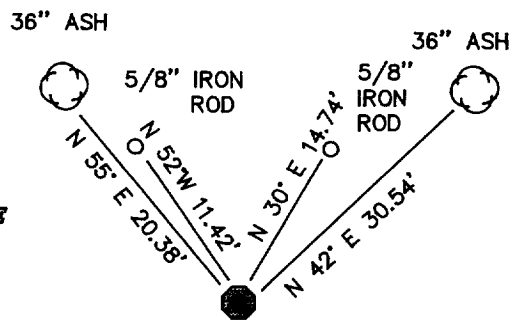
MONUMENT DETAIL



3 1/4" BRASS CAP



SKETCH



MONUMENT SET (PROCEDURES AND DESCRIPTION):

FOUND A 1" IRON ROD 13" BELOW SURFACE PER CORNER REST. No. 1293. DROVE A
2" x 36" OUTSIDE DIAMETER SQUARE IRON TUBE OVER THE FOUND 1" IRON ROD TO A
DEPTH OF 13" BELOW SURFACE WITH A 3 1/4" BRASS CAP MARKED AS SHOWN. POSTED
A "SURVEY MARKER" SIGN SOUTH 1.00'.

NEW ACCESSORIES :

SET A 5/8" x 30" IRON ROD WITH A YELLOW PLASTIC CAP STAMPED " BENTON COUNTY
SURVEYOR" 8" BELOW SURFACE BEARS N 30° E 14.74'.

SET A 5/8" x 30" IRON ROD WITH A YELLOW PLASTIC CAP STAMPED " BENTON COUNTY
SURVEYOR" 8" BELOW SURFACE BEARS N 52° W 11.42'.

NOTE: BCBW IS A BRASS WASHER STAMPED "BENTON COUNTY SURVEYOR'S OFFICE".
ALL DISTANCES ARE TO BCBW, BEARINGS ARE TO CENTER OF TREE, TREE DIM-
ENSIONS ARE MEASURED DIAMETERS, UNLESS OTHERWISE NOTED.

LOCATION AND COMMENTS :

CORNER IS 120 FEET SOUTH OF
MUDDY CREEK. AND IS ON
THE NORTH EDGE OF A
FARMERS CHRISTMAS TREE
FIELD.

COMPASS DECLINATION : 20°E

FIRM/AGENCY : BENTON COUNTY PUBLIC WORKS

ADDRESS : 360 S.W. AVERY CORVALLIS, OREGON

PARTY CHIEF : RAYMOND E. WILSON

NOTES : ANDREW FOSTER

WITNESS :

DATE 12/22/1995

TOWNSHIP 12 SOUTH, RANGE 5 WEST, WILLAMETTE MERIDIAN; SECTION 20 CORNER _____
DONATION LAND CLAIM SOLOMON K. BROWN NO. 54 _____ CORNER E-NE _____

COMMON CORNER(S):

THE SOUTHWEST INTERIOR CORNER OF THE HIRAM ALLEN DLC NO. 50.

UPDATES AND REVISIONS:

CORNER RECORDS (PREVIOUS RENEWALS, SURVEYS, ETC.)

- [01] ORIGINAL GLO SURVEY BY DENNIS HATHORN DATED AUGUST 27, 1856.
- [02] COUNTY SURVEY NO. 311 BY W.C. GALLOWAY DATED MAY 15, 1912 (FIELD BOOK NO. 12, PAGE 34).
- [03] OLD CORNER RESTORATION BOOK NO. 1 PAGE 36 BY W.C. GALLOWAY DATED MAY 15, 1912.
- [04] CORNER RESTORATION NO. 1293 BY W.C. GALLOWAY DATED MAY 15, 1912.
- [05] MAP NO. 12-5-00038 BY W.C. GALLOWAY DATED JANUARY 25, 1922.
- [06] MAP NO. 12-5-00039 BY W.C. GALLOWAY DATED DECEMBER 18, 1931.
- [07] MAP NO. 12-5-00041 BY BENTON COUNTY SURVEYOR'S OFFICE DATED SEPTEMBER 1941.
- [08] COUNTY ROAD NO. 25271, ROAD NO. 635 MAP, BY W.C. GALLOWAY DATED JANUARY 31, 1946.
- [09] CORNER RESTORATION NO. 3533 BY DANNA INGRAM-FEHRENBACHER DATED SEPTEMBER 6, 1988.
- [10] COUNTY SURVEY NO. 8272 BY DANNA INGRAM-FEHRENBACHER DATED MARCH 16, 1989.

COMMENTS/LOCATION/ETC:

THE SURVEYOR OF RECORD [01] MEASURED DISTANCES TO THE FACE OF BEARING TREES.

RECORD [04] IS A TRANSCRIBED COPY OF RECORD [03] AND MAY CONTAIN ERRORS AND OMISSIONS.

SEE RECORD [10] FOR GEODETIC VALUES.

NOTES:

THIS IS A MICROSOFT WORD (VERSION 5.0) DOCUMENT NAMED "25854010" CREATED FROM A BOILER PLATE DOCUMENT NAMED "HISTORY", WHICH HAS A STYLESHEET NAMED "CORNER" ATTACHED TO IT.

FIRM/AGENCY: BENTON COUNTY SURVEYOR'S OFFICE
ADDRESS: 360 S.W. AVERY AVE. CORVALLIS OR 97333; PH. 757-6821
RESEARCH BY: CURTIS J. LIESENFELT/MARK E. ANDERSON
DATA ENTRY BY: ROSE LINDGREN