

# CORNER FILE TRACKING

H:\Survey\Corners\Misc\Filetrac.doc

11/23/98

<b>CORNER NUMBER</b>
<b>125862060</b>

<b>STEP</b>	<b>HISTORY(H1)</b>	<b>RESTORATION()</b>
<b>Form Prepared, DB</b>	4/24/00	—
<b>Field Inspection, DB</b>	—	—
<b>Form Checked, DB</b>	—	—
<b>Form Edited, DB</b>	5/2/00	—
<b>Form Signed, DB</b>	—	—
<b>Authorize Payment, DB</b>	—	—
<b>Archive Digital Files</b>	5/2/00	—
<b>Collect Documents</b>	"	—
<b>Scanned</b>	5/5/00	—
<small>pl. w/</small> <small>pl.</small> <b>Copy For Filming</b>	5/2/00	—
<b>Filed, DB</b>	4	—
<b>Finish index (count unit)</b>	"	—
<b>Filmed (Archived), DB</b>		

(DB) = Entry needed in database (Access).

## COMMENTS:

Need to update the history (create H1). ✓

5/2/00 PLEASE SCAN IN 125862060 H1 & ADD TO THE END OF THE FILE.

C.S. Road #1 Most North N.E. Corner of Bushrod W. Wilson Cl. 64 T. 12-5  
 W.C. Galloway Set a Stone 15" x 15" x 3" Did not find original stone  
 lined from low line of N. Owenby Cl. 62  
 Roy S. Lee Oak 40" in dia. bears N 4° 30' E. 1.53 chs.  
 1930 " 20" " " S 32° W. 1.36 "

N.W. Corner of Nicholas Owenby D.L.C. #62 T. 12 S. R. 5 W.  
 Found orig. sandstone, set E. 5.03'  
 Referenced by 1" Iron pipe East Lts. 35.03 feet and 1" Iron rod W. Lts. 24.97'  
 Top of Marys Peak is S. 87° 57½' W. (Bearing from O.S.C.)

Bellfontain-Danson Interior Cor. of James McCoy D.L.C. #60 T. 14 S. R. 6 W.  
 Road Surrey Set ¾" pipe 12" under surface Found fir stump and log of oak.  
 July 28, 1929 Marked fir 20" in dia. bears S 73° E 4.800 chs.  
 Witnesses Oak 24" " " S 53° W 5.880 "

Gordon Bath Most Sout S.E. Cor. of James McCoy D.L.C. #60 T. 14 S. R. 6 W.  
 N.C. Galloway Set pipe

C.S. 286 in Road N.W. corner of Sec. 6 and N.W. corner of Township 11 S. R. 7 W.  
 Surrey Summit Co. Line Set 22 gauge gun barrel S.W. snag has measure notch and T  
 snag, N.W. blazed No. 1 witness tree [position -  
 N.W. & N.E. stamps in place, S.E. gone - log running N. from  
 by W.C. Galloway Marked Fir 7" in dia. N. 30° E. 14.5' = .220 chs.  
 Witnesses " " 5" " " N 88° E 7.4' = .112 "  
 Geo. Strouts " " 6" " " S. 33½° W. 9.3' = .141 "  
 Geo. Gilbert " " 6" " " N. 31½° W. 8.07' = .122 "  
 Jan. 1929

C.S. #134 Continued ¼ Sec. cor. between Secs. 17 & 20 T 10 S. R. 5 W.  
 by W.C. Galloway Cs. Set ½" galv. pipe Yew stake near.  
 March 3, 1933. Fir 12" now 36" in dia. N. 35° W. 94 chs. std. measure to cen.  
 Witnesses " 60" " " N. 8° 20' W. 1.055 " " "  
 J.C. Smith, E.E. Larkin " 26" " " S. 41° E. .161 " " "  
 Wm. Coote

Same as cor. above. Corner to secs. 17, 18, 19 & 20 T 10-5  
 Set ½" Galv. pipe. Found 2 stakes and Fir 30" & 70½" W. 1.21 in tree gone.  
 Mkd. Fir 20" N. 5° W. .081 chs.  
 " 13" N. 51½° E. 3.10 " std.  
 " 24" S. 32° E. .212 "  
 " 20" S. 78½° W. .272 "

C.S. 134 ¼ Section corner bet. Secs. 18 & 19 T. 10-5  
 Spring March 4, 1933 Set ¾" black pipe and rock pile  
 Jos. C. Smith Fir 20" in dia. bears N. 44½° E. 2.94, rollin stump std.  
 Emile E. Larkin " 18" " " S. 70° W. 3.29, Standing, good condition.  
 Wm. Butolph Marked " 22" " " N 42¼° E. .604  
 " " 6" " " N 80¾° W. .428

C.S. Road #1.

W.C. Galloway

Roy S. Lee

1930.

Most North N.E. Corner of Bushrod W. Wilson Cl. 64 T. 12-5

Set a ~~Stone 15" x 15" x 5"~~Did not find original stone  
Lined thru on W. line of N. Owenby Cl. 62

Oak 40" in dia. bears N. 4° 30' E. 1.53 chs.

" 20" " " " S 32° W. 1.36 "

N.W. Corner of Nicholas Owenby D.L.C. #62 T. 12 S. R. 5 W.

Found Orig. sandstone, set E. 5.03'

Referenced by 1/2" iron pipe East Lts. 35.03 feet and 1" iron rod W. Lts. 24.97'

Top of Mays Peak is S. 87° 57 1/2' W. (Bearing from O.S.C.)

Bellfountain-Darson

Road Survey

July 28, 1929

Witnesses

Gordon Bath

W.C. Galloway

Interior Cor. of James McCoy D.L.C. #60 T. 14 S. R. 6 W.

Set 3/4" pipe 12" under surface Found fir stump and log of oak.

Marked fir 20" in dia. bears S 73° E 4.800 chs.

" Oak 24" " " " S 53° W 5.880 "

Most South S.E. Cor. of James McCoy D.L.C. #60 T. 14 S. R. 6 W.

Set pipe ?

C.S. 286 in Road

Survey Summit Co. Line

by W.C. Galloway

Witnesses

Geo. Strouts

N.W. corner of Sec. 6 and N.W. corner of Township 11 S. R. 7 W.

Set 22 gauge gun barrel

S.W. snag has measure notch and T

Snag N.W. blazed not a witness tree

N.W. &amp; N.E. stumps in place, S.E. gone. log running N. from

[Position]

Marked Fir 7" in dia. N. 30° E. 14.5' = .220 chns.

" " 5" " " N 88° E 7.4' = .112 "

N. W. corner of Nicholas Owenby, DLC 62, Twp. 12 S., R. 5 W.

Reestablishment by W. C. Galloway

1930

1323

Found original stone set E 5.03 chains

Referenced by  $\frac{1}{2}$ " iron pipe east right angle 35.03 feet and 1"  
iron rod W right angle 24.97 chains.

Top of Marys Peak is S  $87^{\circ} 57\frac{1}{2}'$  W (bearing from O. S. C.)



OREGON CORNER RESTORATION FORM

DLC Section 62 Township 12 S Range 5 W

County BENTON Date 4/18/1988

CORNER DESIGNATION

DLC 62

NORTH WEST CORNER OF NICHOLAS OWNBY DONATION LAND CLAIM No. 62

- Condition Report Only
Not Found
Renewed
Unrecorded
Surveyed In
Referenced Out

Previous Renewals/Surveys, etc. CORNER REST. No. 1323 01/01/1930

GALLONAY HARDCOPIES 12-5-00039 AND 12-6-00030

Monument(s) & Accessories Found: (Condition and Source)

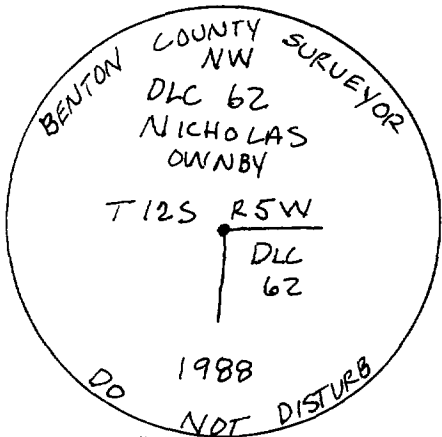
FOUND A 1/2" X 6" SPIKE 10" BELOW SURFACE (PER 12-6-00030).

FOUND A 8" X 12" X 7" STONE (GLO) 16" BELOW SURFACE. WITH AN "X" ON TOP. USED "X" FOR LOCATION OF CORNER.

1 FOUND A 3/4" INSIDE DIAMETER IRON PIPE BEARING EAST 35.03' (S 89° 55' E 35.03' PER CORNER REST. No. 1323)

2 FOUND A 1 1/4" IRON ROD BEARING WEST 25.10' (N 89° 55' W 24.97' PER CORNER REST No. 1323).

Monument Detail

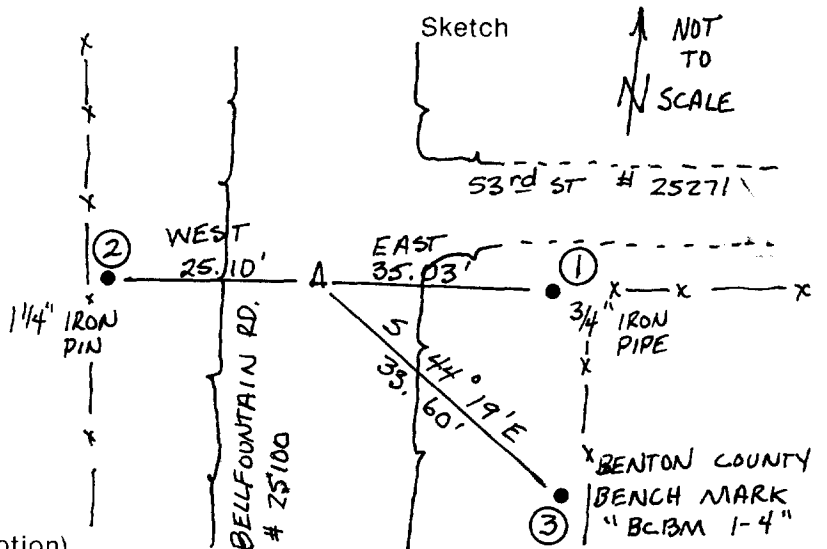


3 1/4" BRASS CAP

Monument Set (Procedures and Description)

SET A 3 1/4" BRASS CAP IN A 2 1/4" X 16" OUTSIDE DIAMETER IRON PIPE 4" BELOW SURFACE IN A STREET MONUMENT BOX. LEFT GLO STONE IN PLACE AND BURIED 8" SPIKE HORIZONTALLY BESIDE MONUMENT.

New Accessories 3 A BENTON COUNTY BENCH MARK (VERTICAL CONTROL) STAMPED "B.C.B.M. 1-4" BEARS S 44° 19' E 33.60'.



Location & Comments

CORNER IS IN A STREET MONUMENT BOX 30 FEET SOUTH OF THE INTERSECTION OF 53rd ST. (COUNTY ROAD No. 25271) AND BELLFOUNTAIN RD. (COUNTY ROAD No. 25100) CORVALLIS OR 97333

Surveyor's Seal



Danna L. Ingram



DATE 04/18/2000TOWNSHIP 12 SOUTH, RANGE 05 WEST, WILLAMETTE MERIDIAN; SECTION 19 CORNER N/A  
DONATION LAND CLAIM NICHOLAS OWNBY NO. 62 CORNER NORTHWEST**COMMON CORNER(S):**

NONE

**RECORDS (INFORMATION IN *BOLD ITALICS* IS COUNTY STAFFS' INTERPRETATION OF THE RECORD)**

- [01] ORIGINAL GLO SURVEY BY DENNIS HATHORN, D.S., APPROVED AUGUST 27, 1856. *SET SANDSTONE POST AND DUG TRENCH.*
- [02] COUNTY ROAD NO. 25100 NOTES (ROUTE 1, SECTION G, STATION 595+47.51) BY W. C. GALLOWAY, C.S., NO DATE GIVEN. *"X" ON SANDSTONE WITH 2 ACCESSORIES.*
- [03] OLD CORNER RESTORATION BOOK NO. 1, PAGE 199, BY W. C. GALLOWAY, DATED 1930. *FOUND ORIGINAL SANDSTONE REFERENCED BY 2 IRON OBJECTS.*
- [04] CORNER RESTORATION NO. 1323. *THIS IS A TRANSCRIBED COPY OF RECORD [03] AND MAY CONTAIN ERRORS AND OMISSIONS.*
- [05] MAP NO. 12-5-00039 (COUNTY SURVEY OLD NO. 121) BY W. C. GALLOWAY, DATED DECEMBER 18, 1931. *SANDSTONE WITH IRON ACCESSORIES EASTERLY AND WESTERLY.*
- [06] MAP NO. 12-5-00045 (COUNTY SURVEY OLD NO. 335) BY BENTON COUNTY, NO DATE GIVEN. *NO MONUMENT DESCRIPTION, 2 IRON ACCESSORIES.*
- [07] MAP NO. 12-6-00030 (COUNTY SURVEY OLD NO. 228) BY W. C. GALLOWAY, DATED JUNE, 1934. *IRON PIN OVER ORIGINAL STONE WITH IRON ACCESSORIES.*
- [08] COUNTY ROAD NO. 25100 ROLL MAP, BY W. C. GALLOWAY, DATED JULY, 1945. *"+" ON SANDSTONE, WITH PIPES EASTERLY AND SHAFT WESTERLY.*
- [09] COUNTY ROAD (OLD) NO. 635 NOTES (FIELD BOOK NO. 112, PAGE 1) BY W. C. GALLOWAY, DATED JANUARY 28, 1946. *NO DESCRIPTION.*
- [10] COUNTY SURVEY NO. 2078 NOTES (FIELD BOOK NO. 94, PAGE 90) BY W. C. GALLOWAY, DATED JANUARY 11, 1949. *NO DESCRIPTION.*
- [11] CORNER RESTORATION NO. 3508, BY DANNA INGRAM, C.S., DATED APRIL 18, 1988. *FOUND SPIKE AND STONE WITH AN "X" AND 2 IRON ACCESSORIES. SET BRASS DISC AND 1 NEW ACCESSORY.*
- [12] COUNTY SURVEY NO. 8270, BY DANNA INGRAM-FEHRENBACHER, C.S., DATED MARCH 3, 1989. *FOUND 3 1/2" BRASS DISC.*
- [13] COUNTY SURVEY NO. 8271, BY DANNA INGRAM-FEHRENBACHER, DATED MARCH 15, 1989. *PER RECORD [11].*
- [14] COUNTY SURVEY NO. 8272, BY DANNA INGRAM-FEHRENBACHER, DATED MARCH 16, 1989. *FOUND 3 1/2" BRASS DISC.*
- [15] COUNTY SURVEY NO. 8954, BY RAY WILSON, D.C.S., DATED APRIL 3, 1995. *FOUND 3 1/4" BRASS DISC.*

**COMMENTS/LOCATION/ETC:****NOTES:**

THIS IS A MICROSOFT WORD 97 DOCUMENT NAMED "25862060" CREATED FROM A BOILER PLATE DOCUMENT NAMED "HISTORY", WHICH HAS A STYLESHEET NAMED "CORNER" ATTACHED TO IT.

**FIRM/AGENCY:** BENTON COUNTY SURVEYOR'S OFFICE  
**ADDRESS:** 360 S.W. AVERY AVE. CORVALLIS OR 97333; PH. 766-6821  
**RESEARCH BY:** CURTIS J. LIESENFELT, P.L.S.  
**DATA ENTRY BY:** SAME