

125864020

CORNER FILE TRACKING

H:\Survey\Corners\Misc\Filetrac2.doc
06/15/2003

CORNER NUMBER
125864020

STEP	HISTORY()	RESTORATION()
Form Prepared, DB	10/26/10	11/9/10
Field Inspection, DB	11/8/10	11/8/10
Finish index (count unit)	11/8/10	11/8/10
Counter Index	11/9/10	11/9/10
GIS Index Form	11/9/10	11/9/10
Checked, DB	11/15/10	11/15/10
Form Edited, DB	11/15/10	11/15/10
Form Signed, DB	11/15/10	11/15/10
Authorize Payment, DB	~	~
Archive Digital Files	11/15/10	11/15/10
Collect Documents	11/15/10	11/15/10
PDF File	11/15/10	11/15/10
Copy For Filming	11/15/10	11/15/10
Scanned	11/15/10	11/15/10
Filmed (Archived), DB		
Filed, DB		

(DB) = Entry needed in database (Access).

COMMENTS:

DATE 10/26/2010TOWNSHIP 12 SOUTH, RANGE 5 WEST, WILLAMETTE MERIDIAN; SECTION 32 CORNER NONEDONATION LAND CLAIM BUSHROD W. WILSON NO. 64 CORNER SOUTHEAST**COMMON CORNER(S):**

NORTHEAST CORNER OF THE JACOB MARTIN DONATION LAND CLAIM (DLC) NO. 66

POINT ON THE WEST LINE OF THE WILLIAM OWNBY DONATION LAND CLAIM (DLC) NO. 67

RECORDS (INFORMATION IN BOLD ITALICS IS COUNTY STAFFS' INTERPRETATION OF THE RECORD)

BASED ON EXTENSIVE RESEARCH AND RECOVERY OF EVIDENCE, THIS OFFICE HAS DETERMINED THAT MOST GENERAL LAND OFFICE SURVEYORS MEASURED TO THE FACE OF BEARING TREES.

- [01] GENERAL LAND OFFICE (GLO) NOTES OF THE JACOB MARTIN DONATION LAND CLAIM (DLC) NO. 66 BY DENNIS HATHORN, D.S., DATED JANUARY 13, 1854. *A WITNESS POST BEARS WEST, 140 LINKS (92.40 FEET) OF TRUE CORNER. FROM WITNESS POST AN OAK 15" DIA BEARS N56°W, 55 LINKS (36.30 FEET); AN OAK 15" DIA BEARS S80-1/2°W, 182 LINKS (120.12 FEET). FROM TRUE CORNER AN OAK 10" DIA BEARS N85°E, 29 LINKS (19.14 FEET); AN OAK 30" DIA BEARS S24°E 25 LINKS (16.50 FEET); AN ASH 6" DIA BEARS NORTH 6 LINKS (3.96 FEET).*
- [02] GENERAL LAND OFFICE (GLO) NOTES OF THE WILLIAM OWNBY DONATION LAND CLAIM (DLC) NO. 67 BY DENNIS HATHORN, D.S., DATED FEBRUARY 3, 1854. *CORNER TIED BUT NOT DESCRIBED.*
- [03] GENERAL LAND OFFICE (GLO) NOTES OF THE BUSHROD W. WILSON DONATION LAND CLAIM (DLC) NO. 64 BY DENNIS HATHORN, D.S., DATED FEBRUARY 11, 1854. *WITNESS POST ON LEFT BANK OF MUDDY CREEK. SEE NOTES OF J. MARTIN'S CLAIM. TRUE CORNER ON OPPOSITE BANK FROM WHICH AN OAK 10" DIA BEARS N85°E, 29 LINKS (19.14 FEET); AN OAK 30" DIA BEARS S24°E, 25 LINKS (16.50 FEET); AN ASH 6" DIA BEARS NORTH, 6 LINKS (3.96 FEET).*
- [04] COUNTY SURVEY NO. 10190 (OLD NO. 289) FIELD NOTES (FIELD BOOK 59, PAGE 4) BY WALTER W. LARSON, D.C.S., DATED NOVEMBER 30, 1929. *STONE 12" SQUARE. OAK 36" N57-1/2°E, 1.02 CHAINS (67.32 FEET). OAK 10" N85°E, 0.29 CHAINS (19.14 FEET). OAK 30" S24°E, 0.25 CHAINS (16.50 FEET). ASH 8" NORTH, 0.06 CHAINS (3.96 FEET). WITNESS CORNER 1.40 CHAINS (92.40 FEET) WEST OF CORNER. OAK 15" N56°W, 0.55 CHAINS (36.30 FEET). OAK 15" S80-1/2°W, 1.82 CHAINS (120.12 FEET).*
- [05] BENTON COUNTY CORNER RESTORATION BOOK NO. 1, PAGE 190, BY W. W. LARSON, D.C.S., DATED 1929. *FOUND SET STONE 8" X 8" X 14" FROM WHICH AN OAK 36" DIA BEARS N57-1/2°E, 1.02 CHAINS (67.32 FEET); AN OAK 10" DIA BEARS N85°E, 0.29 CHAINS (19.14 FEET); AN OAK 30" DIA BEARS S24°E, 0.25 CHAINS (16.50 FEET); AN ASH 8" DIA BEARS NORTH, 0.06 CHAINS (3.96 FEET).*
- [06] BENTON COUNTY CORNER RESTORATION NO. 1331. *TRANSCRIBED FROM RECORD [05] AND MAY CONTAIN ERRORS AND/OR OMISSIONS.*
- [07] BENTON COUNTY MAP NO. 12-5-00046, NO DATE OR DRAFTSMAN GIVEN. *STONE C.S. 12" SQUARE. OAK 36" N57-1/2°E, 1.02 CHAINS (67.32 FEET) STANDING MARKED. OAK 30" S24°E, 0.25 CHAINS (16.50 FEET) STANDING. ASH 8" NORTH, 0.06 CHAINS (3.96 FEET) STANDING DEAD.*
- [08] COUNTY SURVEY NO. 3665 BY RICHARD W. FAIL, P.L.S., DATED AUGUST 3, 1962. *CORNER NOT DESCRIBED.*
- [09] COUNTY SURVEY NO. 3828 BY RICHARD W. FAIL, P.L.S., DATED SEPTEMBER 11, 1963. *CORNER NOT DESCRIBED.*
- [10] SUBDIVISION PLAT OF "CRESTELLYN ACRES" BY NICKOLAS A. YINGER, P.L.S., DATED NOVEMBER 28, 1969. *FOUND STONE.*
- [11] COUNTY SURVEY NO. 5011 BY NICKOLAS A. YINGER, P.L.S., DATED JANUARY 26, 1971. *FOUND STONE.*
- [12] COUNTY SURVEY NO. 5040 BY RICHARD W. FAIL, P.L.S., DATED MARCH 20, 1971. *FOUND STONE.*
- [13] COUNTY SURVEY NO. 5802 BY NICK A. YINGER, P.L.S., DATED DECEMBER, 1974. *FOUND STONE.*
- [14] COUNTY SURVEY NO. 9690 BY DAVID L. MALONE, P.L.S., DATED OCTOBER 31, 2001. *FOUND 8" X 8" STONE WITH "X". SET RAILROAD SPIKE ON WEST SIDE OF STONE FOR MAGNETIC LOCATION ONLY.*

NOTES:

THIS IS A MICROSOFT WORD 2003 DOCUMENT NAMED "25864020" CREATED FROM A BOILER PLATE DOCUMENT NAMED "HISTORY", WHICH HAS A STYLESHEET NAMED "CORNER" ATTACHED TO IT.

FIRM/AGENCY: BENTON COUNTY SURVEYOR'S OFFICE**ADDRESS:** 360 S.W. AVERY AVE. CORVALLIS OR 97333; PH. 766-6821**RESEARCH BY:** DAVID L. MALONE, P.L.S.**DATA ENTRY BY:** SAME

BENTON COUNTY CORNER RESTORATION FORM, PAGE 1 OF 2, 125864020R2
SEE CORNER HISTORY FORM FOR RECORDS ETC.

CORNER RESTORATION FIELD BOOK NUMBER 29 PAGE(S) 9 DATE 11/08/2010
TOWNSHIP 12 SOUTH, RANGE 5 WEST, WILLAMETTE MERIDIAN; SECTION 32 CORNER NONE
DONATION LAND CLAIM BUSHROD WILSON NO. 64 CORNER SOUTHEAST
CONDITION REPORT ; REFERENCED OUT ; RENEWED XX; SURVEYED IN

LOCATION AND COMMENTS:

CORNER IS LOCATED ON THE EASTERLY (RIGHT) BANK OF MUDDY CREEK IN A LEVEL AREA OF HARDWOODS AND BRUSH. TO REACH CORNER FROM THE JUNCTION OF AIRPORT ROAD AND CUTLER LANE (PRIVATE), TRAVEL SOUTHERLY ON CUTLER LANE FOR 0.61 MILES AND PARK AT THE SOUTHEAST CORNER OF A WOVEN AND BARBED WIRE FENCE; THEN WALK WESTERLY ALONG FENCE LINE FOR APPROXIMATELY 1/4 MILE TO TREE LINE; THEN FOLLOW TREE LINE NORTHWESTERLY AND SOUTHWESTERLY AROUND DUCK LAKE FOR APPROXIMATELY 1000 FEET; THEN APPROXIMATELY S40°W FOR ±400 FEET TO CORNER. CORNER IS POOR FOR PREMARKING AND GPS CONTROL.

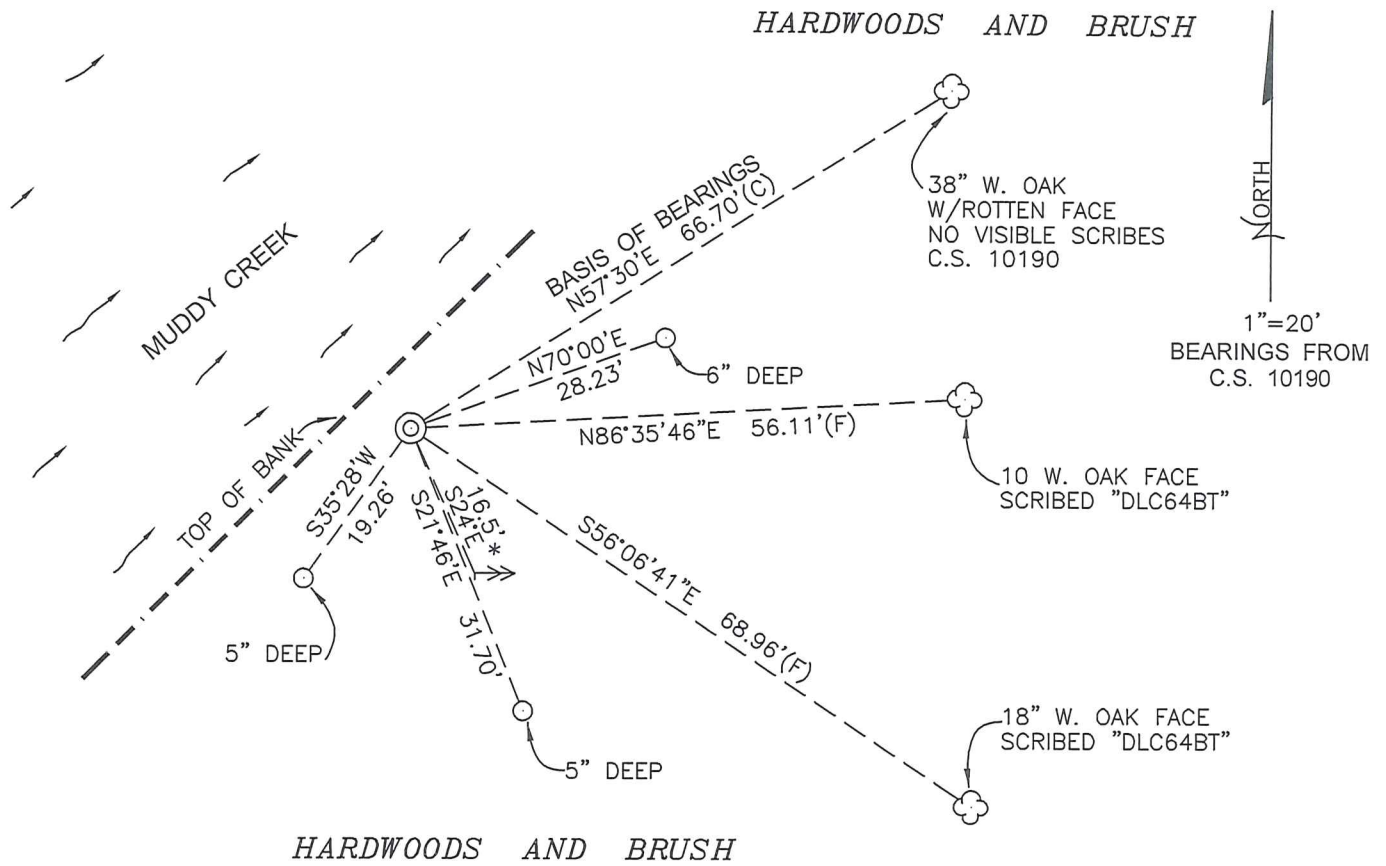
MONUMENTS AND ACCESSORIES FOUND (CONDITION AND SOURCE):

1. FOUND 10" X 10" X 14" SANDSTONE WITH "+" ON TOP AND "CS" ON SOUTHWEST SIDE AND 1" BELOW GROUND LEVEL FOR CORNER POSITION.
(WITNESS POST BEARS WEST 140 LINKS (92.40 FEET) PER RECORD [01]).
(WITNESS POST ON LEFT BANK OF MUDDY CREEK PER RECORD [03]).
(STONE 12" SQUARE PER RECORD [04]).
(FOUND SET STONE, 8" X 8" X 14" PER RECORD [05]).
(STONE C.S. 12" SQUARE PER RECORD [07]).
(FOUND STONE PER RECORDS [10] – [13]).
(FOUND 8" X 8" STONE WITH "X", SET RAILROAD SPIKE ON WEST SIDE OF STONE PER RECORD [14]).
2. FOUND 38" DYING W. OAK WITH ROTTED OUT FACE, N57°30'E, 66.70 FEET TO CENTER. SET ALUMINUM NAIL AND PLASTIC WASHER IN SOUTHEAST BASE FOR DISTANCE MEASUREMENT. BASIS OF BEARINGS FOR THIS RESTORATION. (36" OAK, N57 1/2°E, 1.02 CHAINS [67.32 FEET] PER RECORDS [04], [05] AND [07]).
3. FOUND 50" DOWN AND ROTTEN W. OAK, S24°E, 16.5 FEET TO APPROXIMATE CENTER OF ROOT HOLE. OAK HAD BEEN OPENED PREVIOUSLY, BUT FACE IS NOW ROTTED WITH NO VISIBLE SCRIBING. BEARING AND DISTANCE BY COMPASS AND TAPE ONLY.
(30" OAK BEARS S24°E, 25 LINKS [16.50 FEET] PER RECORDS [01] AND [03]).
(36" OAK, S24°E, 0.25 CHAINS [16.50 FEET] PER RECORDS [04], [05] AND [07]).

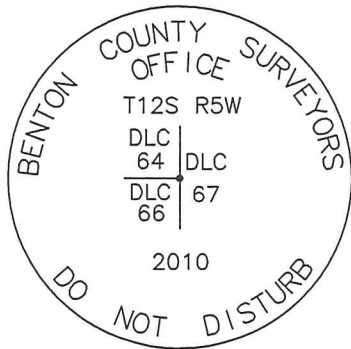
MONUMENT SET (PROCEDURES AND DESCRIPTION):

THE ORIGIN OF THE STONE MARKED "CS" IS UNCLEAR AFTER A THOROUGH SEARCH OF THE RECORDS. NO EVIDENCE OF THE WITNESS POST OR WITNESS CORNER ACCESSORIES COULD BE FOUND. THE ROOT HOLE OF THE SOUTHEAST GLO BEARING TREE COMPARES WELL WITH THE ORIGINAL GLO RECORD AS WELL AS THE THE COUNTY SURVEYOR'S NORTHEAST OAK BEARING TREE PER RECORD [04].

THE RECOVERED 10" X 10" X 14" STONE WAS FOUND FIRMLY SET AND UNDISTURBED. WE HELD THE "+" ON THE TOP HIGH POINT OF STONE FOR THE EXACT CORNER POSITION. REMOVED STONE AND SET A 2" X 31 1/2" GALVANIZED IRON PIPE WITH A 3 1/4" BRASS DISK CONCRETED IN THE TOP, 5" BELOW GROUND LEVEL AND MARKED AS SHOWN ON PAGE 2 OF 2. PLACED THE STONE ON THE SOUTHWEST SIDE OF NEW MONUMENT AT GROUND LEVEL WITH THE "CS" MARKS DOWN. SET A 6 FOOT ORANGE CARSONITE "SURVEY MARKER" POST 0.5 FEET WEST OF NEW MONUMENT.



MONUMENT DETAIL



3 1/4" BRASS DISK

LEGEND

- SET 5/8" X 30" REBAR WITH YELLOW PLASTIC CAP MARKED "BENTON COUNTY SURVEYOR"
- (F) MEASUREMENT TO FACE
- (C) MEASUREMENT TO CENTER
- ⊙ GOVERNMENT MONUMENT SET AS SHOWN
- ☁ BEARING TREE AS NOTED
- C.S.B.T. COUNTY SURVEYORS BEARING TREE
- GLO GENERAL LAND OFFICE
- V.S. VISIBLE SCRIBING
- ⇒ UPROOTED 50" OAK GLO BEARING TREE WITH PREVIOUSLY OPENED FACE NO V.S. TIED APPROXIMATE CENTER OF ROOT HOLE
- * BEARING AND DISTANCE BY COMPASS AND TAPE ONLY

NEW ACCESSORIES:

1. SET REBAR (SEE LEGEND) N70°00'E, 28.23 FEET AND 6" BELOW GROUND LEVEL.
2. SET REBAR (SEE LEGEND) S21°46'E, 31.70 FEET AND 5" BELOW GROUND LEVEL.
3. SET REBAR (SEE LEGEND) S35°28'W, 19.26 FEET AND 5" BELOW GROUND LEVEL.
4. FACE SCRIBED 10" W. OAK, N86°35'46"E, 56.11 FEET TO FACE, MARKED "DLC64BT". SET ALUMINUM NAIL AND PLASTIC WASHER BELOW SCRIBING FOR DISTANCE AND ANGLE MEASUREMENT.
5. FACE SCRIBED 18" W. OAK, S56°06'41"E, 68.96 FEET TO FACE, MARKED "DLC64BT". SET ALUMINUM NAIL AND PLASTIC WASHER BELOW SCRIBING FOR DISTANCE AND ANGLE MEASUREMENT.

NOTES:

COMPASS DECLINATION IS 20° EAST. ALL MEASURED DISTANCES AND BEARINGS ARE TO THE CENTER OF THE OBJECT, UNLESS OTHERWISE NOTED. ALL BEARING TREES ARE PAINTED AND HAVE A B.T. TAG ATTACHED, FACING THE CORNER UNLESS OTHERWISE NOTED. ALL NEW BEARING TREES HAVE A PLASTIC WASHER (STAMPED "SURVEYOR MARKER DO NOT REMOVE") ATTACHED BY AN ALUMINUM NAIL TO THE FACE, BELOW THE "BT" FOR DISTANCE AND ANGLE MEASUREMENT UNLESS OTHERWISE NOTED. THE DRAWING IS FROM AUTOCAD RELEASE 2008.

THIS RESTORATION WAS PERFORMED AT THE DIRECTION AND APPROVAL OF THE BENTON COUNTY SURVEYOR *[Signature]*

FIRM/AGENCY: BENTON COUNTY SURVEYOR'S OFFICE
 ADDRESS: 360 S.W. AVERY AVE. CORVALLIS, OR. 97333; PH. 766-6821
 PRESENT: DAVID M. DEAN, P.L.S. AND DAVE MALONE, P.L.S.
 EQUIPMENT: NIKON NIVO 3.C TOTAL STATION W/SURVEY PRO ONBOARD.

REGISTERED
 PROFESSIONAL
 LAND SURVEYOR

11/15/10 *David M. Dean*

OREGON
 JULY 13, 1984
 DAVID M. DEAN
 2090

RENEWAL DATE: 12/31/11

1929

W.M.V.

Witness

Hughes

Syd. Mohr

"

"

1928

W.M.V.

As Stewans

N.E. Corner of Jacob Martin Ch. 66, 1.735 Row

Found Set Stone 8"x8"x14" from which an

Oak 26" in diameter bears N 0° 15' E 1.0250 S

Oak 10" " " " N 85° E 1.039 "

" 30" " " " S 84° E 1.035 "

1928 8" " " " North 106



N.W. Corner of Jacob Martin Ch. 66 T. 12 S. R. 20

Set Oak Stake 6"x12" in ground which is 2326

Set Oak Stake 8" in diameter bears S 87° W 1.036 S

Iron Post " " " " S 70° W 1.04 "

S.W. Corner of Bushrod Wilson Ch. 64, T. 12 S. R. 5 W

Set 1" rod east of fence 1928

See recorded plat.

4x car on N of Sec. 19, T. 12 S. R. 20

Stake + Stone 4"x14" 1928

11" 10" in diameter bears S 50° E 1.037 S

16" " " " N 30° E 1.04 "

12" " " " N 30° W 1.031 S

12" " " " S 74° W 1.04 "

W. side of Sec 19 T. 12 S. R. 20

Set 1" rod 1/4" pipe



Most South N. E. corner of Eushrod W. Wilson DLC 64, Twp. 12-5 **1329**

Reestablishment by W. C. Galloway January 20, 1948

stone 6" x 6" x 30" in place, original stone, N. W. Oak down
 Oak 12" in diam bears N 33° E 1.21 chains (standin
 Oak 16" in diam bears N 80° E .048 chains
 Oak 8" in diam bears S 10° E .053 chains

Witness Roy Swanson

Sec. 29 1/2 30

N. E. corner of James H. Morris DLC 65, Twp. 12-5

Reestablishment by W. C. Galloway 1935

1330

Set a 1" x 1 1/4" iron bar in center of Co. road and on W. line of B. W. Wilson Cl. and on line from S. E. corner of James H. Morris Cl 65, to the interior corner of B. W. Wilson Cl.

5/8" iron rod bears N 0° 25' W .303 chains
 1/2" iron rod bears S 0° 25' E .303 chains

Witnesses William E. Smith and Willis Smith

Sec. 30

N. E. corner of Jacob Martin Cl 66, Twp. 12 S., R. 5 W.

Reestablishment by W. C. Galloway 1929

1331

Found set stone 8" x 8" x 14"
 Oak 36" in diam bears N 57 1/2° E 1.02 chains
 Oak 10" in diam bears N 85° E .29 chains
 Oak 30" in diam bears S 24° E .25 chains
 Ash 8" in diam bears North .06 chains

Witness Mr. Hughes and Syd. Klohn

Sec. 31 1/2 32



125864620

REMOVED, SE BUSHROD WILSON DLC 64

T 125 R 5 W

Fed 16" x 16" x 14" STONE W "1" ON TOP AND "CS" ON SW SIDE 1" BELOW GROUND

LEVEL, FIRMLY SET FOR COR. POSITION

Fd SE GLO BT NOW T 56" DOWN: W. OAK

w/ CHOPPED OAK FACE - NO US, Fd

CS 10190 BT - NOW 40" W. OAK w/ ROTTED

FACE, Fd R/R SPIKE ON NW SIDE OF STONE

REMOVED STONE AND SET 2' x 3 1/2" G.I.P.

w/ 3/4" BRASS DISK CONC. IN TOP 5"

BELOW GROUND LEVEL AND MKD AS

SHOWN. PLACE "CS" STONE ON SW SIDE

OF NEW MAN AT GROUND LEVEL "CS" DOWN

SET 1' ORANGE CARBONITE "SURVEY

MARKED "POST 0.5' WEST NEW MAN,

OLDY, MILD

55' 301" H⁹

NILKON N1W0 3.C/170S

11/8/10

D. DEAN

D. MARLOWE

29/9

NORTH

BNG'S FROM CS 10170

38" 1/2" OAK w/ ROTTEN FACE - CS BT

BASS BNG'S 10' TO 15'

N 57.30 E

N 70.00 E

N 28.28 E

N 86.36 E 56.11' (CS)

S 56.07 E 68.16' (CS)

S 21.46 E 31.70'

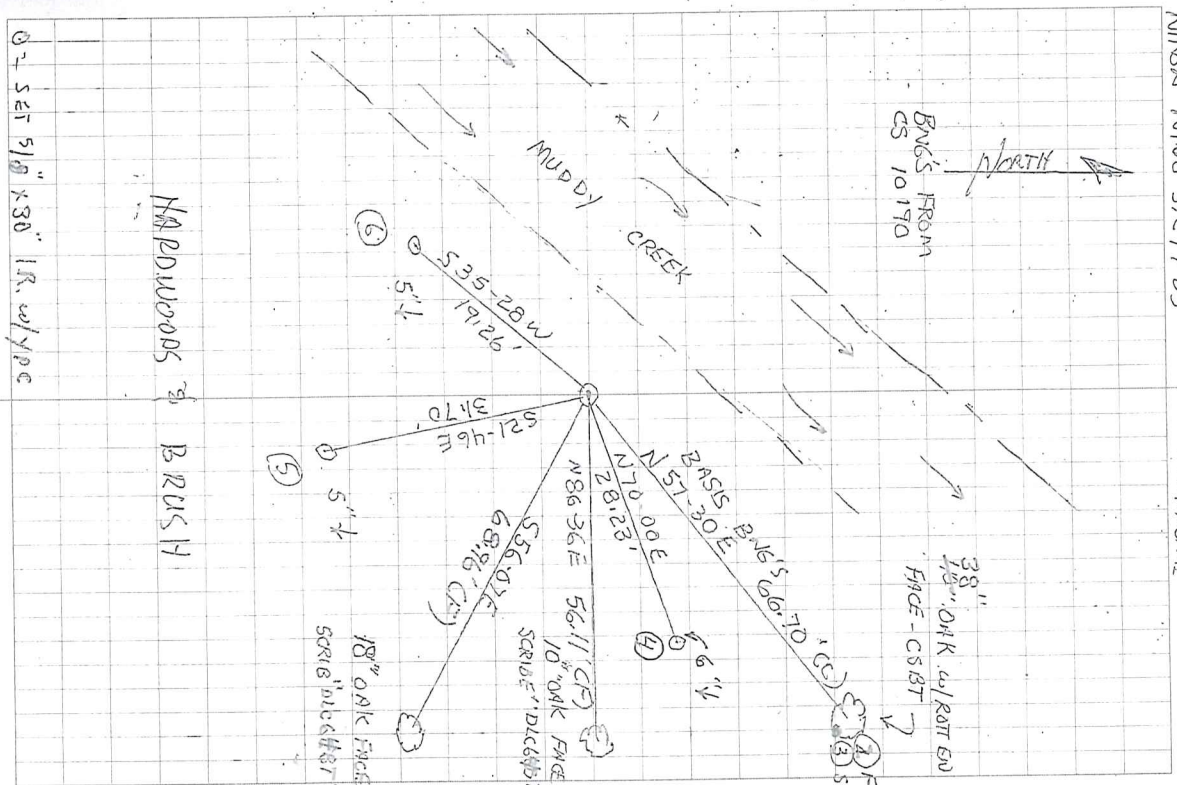
S 35-28 W 19.26'

S 5" x

S 5" x

S 5" x

S 5" x

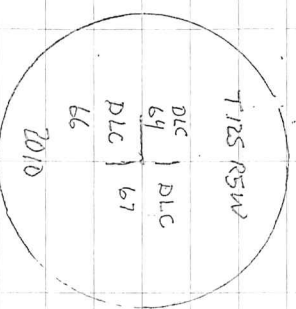


0 - SET 5 1/2" X 30" I.R. w/ YPC

N 87-53 W 11.41', TO LATH

HARDWOODS & BRUSH

18" OAK FACE
SCRIE "DICKER"



3 1/4" BRASS DISK