

C.S. Road #1 Most North N.E. Corner of Bushrod W. Wilson Cl. 64 T. 12-5  
 W.C. Galloway Set a Stone 15" x 15" x 3"  
 Roy S. Lee Oak 40" in dia. bears N. 4° 30' E. 153 chs. Did not find original stone  
 lines from low line of N. Owenby Cl. 62  
 1930 " 20" " " S 32° W. 136 "

N.W. Corner of Nicholas Owenby D.L.C. #62 T. 12 S. R. 5 W.  
 Found Orig. sandstone, set E. 5.03'  
 Referenced by 1/2" Iron pipe East Lts. 35.03 feet and 1" Iron rod W. Lts. 24.97'  
 Top of Marps Paak is S. 87° 57 1/2' W. (Bearing from O.S.C.)

Bellfontain-Darson Interior Cor. of James McCoy D.L.C. #60 T. 14 S. R. 6 W.  
 Road Survey Set 3/4" pipe 12" under surface Found fir stump and log of oak.  
 July 28, 1929 Marked fir 20" in dia. bears S 73° E 4.800 chs.  
 Witnesses " Oak 24" " " S 53° W 5.880 "

Gordon Beth Most Sout S.E. Cor. of James McCoy D.L.C. #60 T. 14 S. R. 6 W.  
 N.C. Galloway Set pipe

C.S. 286 in Road N.W. corner of Sec. 6 and N.W. corner of Township 11 S. R. 7 W.  
 Survey Summit Co. Line Set 22 gauge gun barrel S.W. snag has measure notch and T  
 snag NW, blazed 11' to witness tree  
 NW & NE stumps in place, S.E. gone - log running N from  
 by W.C. Galloway  
 Witnesses Marked Fir 7" in dia. N. 30° E. 14.5' = .220 chs.  
 Geo. Strouts " " 5" " " N 88° E 7.4' = .112 "  
 Geo. Gilbert " " 6" " " S. 33 1/2° W. 9.3' = .141 "  
 Jan. 1929 " " 6" " " N. 31 1/2° W. 8.07' = .122 "

C.S. #134 Continued 1/4 Sec. cor. between Secs. 17 & 20 T. 10 S. R. 5 W.  
 by W.C. Galloway Co. Set 1/2" Galv. pipe Yew stake near.  
 March 3, 1933. Fir 12" now 36" in dia. N. 35° W. 94 chs. std. measure to cen.  
 Witnesses " 60" " " N. 8° 20' W. 1.055 " " " "  
 J.C. Smith, E.E. Larkin " 26" " " S. 41° E. .161 " " " "  
 Wm. Coats

Corner to secs. 17, 18, 19 & 20 T. 10-5  
 Same as cor. above. Set 1/2" Galv. pipe. Found 2 stakes and Fir 30" S. 70 1/2° W. 1.21 in trees gone.  
 Mkd. Fir 20" N. 5° W. .081 chs.  
 " 13" N. 51 1/2° E. 3.10 " std.  
 " " 24" S. 32° E. .212 "  
 " " 20" S. 78 1/2° W. .272 "

C.S. 134 1/4 Section corner bet. Secs. 18 & 19 T. 10-5  
 March 4, 1933 Set 3/8" black pipe and rock pile  
 Jos. C. Smith Fir 20" in dia. bears N. 44 1/2° E. 2.94, rottin stump std.  
 Emile E. Larkin " 18" " " S. 70° W. 3.29, Standing, good condition.  
 Wm. Butolph Marked " 22" " " N. 42 1/4° E. .604  
 " " 6" " " N. 80 3/4° W. .428

Set an iron pipe or rod of some kind, did not find original stone  
Oak 40" in diam bears N 4° 30' E 1.53 chains  
Oak 20" in diam bears S 32° W 1.36 chains  
Witness Roy S. Lee

Reestablishment by W. C. Galloway  
1930  
Most North N. E. corner of Bushrod W. Wilson CI 64, Twp. 12-5

1827

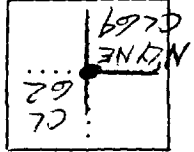
3338

BENTON COUNTY SURVEYORS OFFICE - CORNER RESTORATION

T 12 S, R 5 W, W. B. & M., BENTON COUNTY, OREGON

SECTION 30

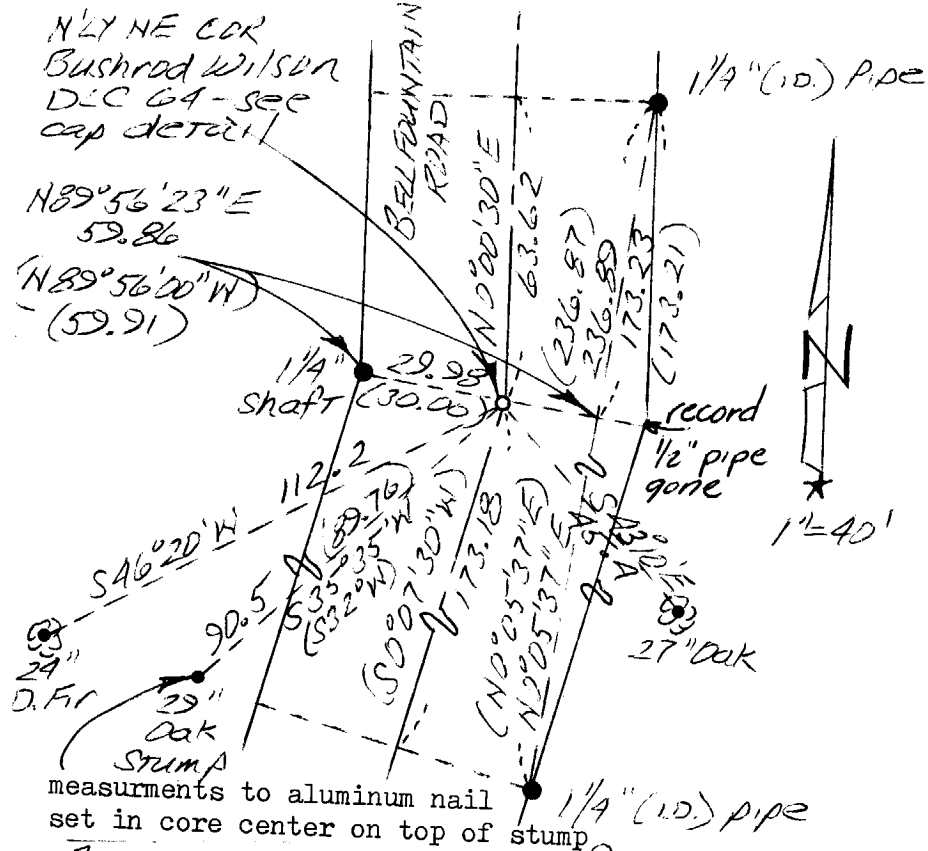
REPORTED BY Bill Lauer  
 TITLE Chief Northstar Surveying  
 DATE 5/10/85



OFFICIAL CORNER FOUND  CORNER SET   
 D/C CORNER COMMON TO ~~62~~ 62 E 64  
 IS 3" BRASS CAP ON 2" (60) PIPE  
 DESCRIBE

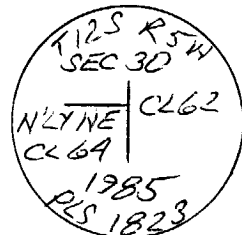
ADDITIONAL INFORMATION  
 Corner lies in E Bellfountain Rd approx 1650 ft north of intersection with Airport Rd  
 Corner reset based on found monuments and data from Gettaway hardcopy 12-5 # 45. (see opposite side for details)  
 It was felt that the resultant position would be closest to the true position as perpetuated by Callaway and that the found original LT would still be within reason.

LEGIBLE MARKS ON BEARING OBJECTS			
	NONE	"BT" (on plug)	NONE
KIND	D. FIR	W. OAK	W. OAK
SIZE	24"	24"	27"
BEARING	S46°20'W	S35°35'W	S43°10'E
DISTANCE	113.2'	98.5'	45.4'
BT TAG POSTED	yes	yes	yes



measurements to aluminum nail set in core center on top of stump

Bearings exaggerated for clarity



Set 3" brass cap on 2" (i.d.) x 36" pipe

Prior to my search for the record monument at the DLC corner, surveyors for the County had also searched and found several PK nails and a 3/4" x 6" square head bolt about 18" below the A/C surface. None of these monuments were of record. Nothing else was found in the hole so we proceeded as shown.

REGISTERED  
PROFESSIONAL  
LAND SURVEYOR

*Theodore Langton*  
OREGON  
JULY 13, 1979  
THEODORE JAMES LANGTON  
1823

NORTHSTAR SURVEYING INC  
402 NW 5TH  
CORYALLIS, OREGON, 97330  
PH: 757-9050

CORNER HISTORY		T 12 S, R 5 W		SECTION 30 D.L.C. BUSHROD W. WILSON NO. 64		CORNER CORNER N-NE		# 864050
NO.	DATE	SOURCE	SURVEYOR	MONUMENTS AND ACCESSORIES		COMMENTS		
①	8/27/1856	ORIG. GLO	DENNIS HATHORN	SET STONE POST 15x15x30 @ 2 OAK BT'S		MEAS. TO FACE		1
								2
	NONE GIVEN	Co. RD. NO. 25100 RD #1-G NOTES	W. C. GALLOWAY	FND. 1 OAK, 3/4" PIPE @ 6 ACES.				3
								4
	1930	OLD COR. REST. BK #1, PG. 199	" "	DID NOT FIND ORIG. STONE, FND BOTH BT'S, SET 1 PIPE OR ROD				5
								6
	"	REST. 1327	" "	" " " " " SET 1 PIPE OR ROD @ 2 OAK BT'S				7
								8
	NONE GIVEN	MAP NO. 12-5-00045	BEH. CO. SURV. OFF	3/4" PIPE @ IRONS 30' E+W		OLD CS # 355		9
								10
	6/1934	MAP NO. 12-6-00030	W. C. GALLOWAY	3/4" PIPE " " " " " 2 OAK BT'S		OLD CS # 288		11
	7/1945	Co. RD. NO. 25100 ROLL MAP	" "	" " " " " "		PROFILE IS 10' ALS		12
	12/7/1948	CS # 2069	" "	NO MON. DESC.		FB 94/84 (OLD CS # 288)		13
								14
	1/11/1949	CS # 2070	" "	" " "		FB 94/90 " " "		15
								16
	8/30/1966	CS # 4302	B. OSBURN SHAW	3/4" PIPE + FND, IRONS 30' E+W				17
								18
	7/25/1968	CS # 4608	" " "	FND. " " " " " "				19
								20
	9/21/1970	CS # 4976	" " "	" PK → IRON 30' W				21
								22
	1979	Co. RD. NO. 25100 MAP	BEH. CO.	NO COR. MON. FND., FND IRON 30' W'ly				23
								24
	5/10/1985	REST. 3338	TEO LANLTON	FND. + REJECTED COR. MONS., FND. 4 ACES, SET BC @ 2 BT'S				25
								26
	3/15/1989	CS # B271	DANNA INGRAM- FEHRENBACHER	" BC				27
								28
	4/3/1995	CS # B954	RAY WILSON	" "				29
								30
								31

1-199  
1327  
3338

DATE 12/19/95TOWNSHIP 12 SOUTH, RANGE 5 WEST, WILLAMETTE MERIDIAN; SECTION 30 CORNER  
DONATION LAND CLAIM BUSHROD W. WILSON NO. 64 CORNER N-NE**COMMON CORNER(S):**

THE WEST LINE OF THE NICHOLAS OWNBY DLC NO. 62.

**UPDATES AND REVISIONS:****CORNER RECORDS (PREVIOUS RENEWALS, SURVEYS, ETC.)**

- [01] ORIGINAL GLO SURVEY BY DENNIS HATHORN DATED AUGUST 27, 1856.
- [02] ROAD NOTES FOR COUNTY ROAD NO. 25100 BY W.C. GALLOWAY (NO DATE GIVEN).
- [03] OLD CORNER RESTORATION BOOK NO. 1, PAGE 199 BY W.C. GALLOWAY DATED 1930.
- [04] CORNER RESTORATION 1327 BY W.C. GALLOWAY DATED 1930.
- [05] MAP NO. 12-5-00045 BY BENTON COUNTY SURVEYOR'S OFFICE (NO DATE GIVEN).
- [06] MAP NO. 12-6-00030 BY W.C. GALLOWAY DATED JUNE 1934.
- [07] ROLL MAP OF COUNTY ROAD NO. 25100 BY W.C. GALLOWAY DATED JULY, 1945.
- [08] COUNTY SURVEY NO. 2069 BY W.C. GALLOWAY DATED DECEMBER 7, 1948 (FIELD BOOK NO. 94, PAGE 84).
- [09] COUNTY SURVEY NO. 2078 BY W.C. GALLOWAY DATED JANUARY 11, 1949, (FIELD BOOK NO. 94, PAGE 90).
- [10] COUNTY SURVEY NO. 4302 BY B. OSBURN SHAW DATED AUGUST 30, 1966.
- [11] COUNTY SURVEY NO. 4608 BY B. OSBURN SHAW DATED JULY 25, 1968.
- [12] COUNTY SURVEY NO. 4976 BY B. OSBURN SHAW DATED SEPTEMBER 21, 1970.
- [13] MAP OF COUNTY ROAD NO. 25100 BY BENTON COUNTY SURVEYOR'S OFFICE DATED 1979.
- [14] CORNER RESTORATION NO. 3338 BY TED LANGTON DATED MAY 10, 1985.
- [15] COUNTY SURVEY NO. 8271 BY DANNA INGRAM-FEHRENBACHER DATED MARCH 15, 1989.
- [16] COUNTY SURVEY NO. 8954 BY RAY WILSON DATED APRIL 3, 1995.

**COMMENTS/LOCATION/ETC:**

THE SURVEYOR OF RECORD [01] MEASURED DISTANCES TO THE FACE OF BEARING TREES.

RECORD [12] RECOVERS A MONUMENT (PK NAIL) AT/NEAR THE CORNER.

RECORD [14] DISCUSSES REJECTING RECOVERED PK NAILS AT/NEAR THE CORNER BECAUSE THEY WERE NOT "OF RECORD".

SEE RECORD [15] FOR GEODETIC VALUES.

**NOTES:**

THIS IS A MICROSOFT WORD (VERSION 5.0) DOCUMENT NAMED "25864050" CREATED FROM A BOILER PLATE DOCUMENT NAMED "HISTORY", WHICH HAS A STYLESHEET NAMED "CORNER" ATTACHED TO IT.

**FIRM/AGENCY:** BENTON COUNTY SURVEYOR'S OFFICE  
**ADDRESS:** 360 S.W. AVERY AVE. CORVALLIS OR 97333; PH. 757-6821  
**RESEARCH BY:** CURTIS J. LIESENFELT/MARK E. ANDERSON  
**DATA ENTRY BY:** ROSE LINDGREN