

CORNER FILE TRACKING

F:\Survey\Corners\Misc\Filetrac.doc

8/11/97

CORNER NUMBER
125869020

STEP	HISTORY()	RESTORATION()
Form Prepared, DB	10/1/98	10/21/98
Field Inspection, DB	—	—
Form Checked, DB	11/17/98	11/17/98
Form Edited, DB	11/10/98	11/18/98
Form Signed, DB	—	11/25/98
Authorize Payment, DB	—	—
Archive Digital Files	11/25/98	11/25/98
Collect Documents	11/25/98	11/25/98
Copy For Filming		
Filmed		
Scanned (Archived), DB		
Indexed		
Update Database		
Filed, DB		

(DB) = Entry needed in database (Access).

COMMENTS:

11/25/98 ~~NEED TO~~ INITIAL

12-5
 68 32 | 33
 57 | 4
 13

CORNER HISTORY		T 12 S, R 5 W		SECTION 32 D.L.C. JESSE OWENBY NO. 69		CORNER SE CORNER SE		# 300100 B69020V
NO.	DATE	SOURCE	SURVEYOR	MONUMENTS AND ACCESSORIES		COMMENTS		
1	5/5/1853	ORIG. GLO	GEORGE W. HIDE	SET POST, CHAPPED STK, @ MOUND + TRENCH				1
2	8/27/1856	GLO	DENNIS HATHORN	NONE GIVEN				2
3	12/14/1920	CS# 737	W.C. GALLOWAY	SET 3/4" SHAFT FROM OLD FENCES FB 2B/17				3
4	12/1920	OLD COR. REST. BK. #1, PL. 153	" "	" " " " FENCES + MEAS @ 2 ALLES.				4
5	-	REST. 1233	-	TRANS. COPY OF REC. [03] + MAY CONTAIN E90				5
6	12/18/1920	MAP NO. 1345-00004	" "	3/4" SHAFT @ 2 ALLES				6
7	11/22/1920	MAP OF CO. B. N. N. 25260	" "	NO MON. DESC. SAME D. TO N				7
8	6/1997	GISTOFA MAP PINN. PROJ	RAY WILSON	FND				8
								9
								10
								11
								12
								13
								14
								15
								16
								17
								18
								19
								20
								21
								22
								23
								24
								25
								26
								27
								28
								29
								30
								31

1-7
 1-15
 1-23

300100
 B69020V

"

W.C. to 1/4 sec. cor. between secs. 4 & 5, T. 13-5

Set a 3/4" shaft: 10 lks. N. from true corner

Oak 10" in dia. bears S. 60 3/4° E. .253 chs.

" 7" " " " N. 72° W. .091 "

C.S. 289

W.C. Galloway &

C.E. Davis.

Recorded W.C. to S.E. corner of Jesse Ownby D.L.C. # 57 T13-5

Stone 14"X12"X10" in place which is 1.25 W. of true corner.

Oak 7" in dia. bears S. 19° E. .195 chs.

" stump 20" " " S. 5 1/2° W. .13 " orig. stump.

" 18" " " N. 83 1/2° W. .43 " " tree.

C.S. 289

W.C. Galloway c.s.

E.J. Lowellyn

Geo. & C.E. Davis.
Dec. 1920.

Corner to Secs. 32, 33, 4 & 5 Tps. 12 & 13 S. R. 5 W.

Set a 3/4" shaft. Set from fences and other measurements

A 3/4" shaft bears N. 0° 44' E. 9.855 chs.

A 1/2" iron rod, N. 89° 53' W. 2.50 "

C.S. #205 cont.

W.C. Galloway C.S.

G.A. Hindes &
E.A. Holmes
Witnesses

Interior Corner Of Smiley Carter D.L.C. # 50, T10-4

Set a 1"X36" pipe from Oak stump 7" N. 57 1/2° E. .24

other trees gone.

C.S. #32

F.M. Wilkes C.S.

Robert H. Gallatly

Recorded S.W. Cor. of Geo. E. Knowlton D.L.C. 70 T. 12-6.

Set a stone 15"X12"X15"

Oak 30" in dia. bears N. 12° W. 3.99 chs. std.

Fir 11" " " " East .738 "

C.S. #22

F.M. Wilkes C.S.

Oct. 13, 1905.
checked and

to W.W.L. S.W. Cor. of Gallatin Adkins D.L.C. 43, T. 10-4

Set 3/4" galv. pipe

12-5-32,33 13-5-4,5

Corner to sections 32, 33, 4 and 5, Twp. 12 and 13 S., R. 5 W.

1233

Reestablishment by W. C. Galloway

December 1920

Set a $\frac{3}{4}$ " shaft, set from fences and other measurements.

$\frac{3}{4}$ " shaft bears N 0° 44' E

9.855 chains

$\frac{1}{2}$ " iron rod bears N 89° 53' W

2.50 chains

Witness E. J. Lewellyn, George and C. E. Davis

DATE 10/01/1998TOWNSHIP 12 SOUTH, RANGE 5 WEST, WILLAMETTE MERIDIAN; SECTION 32 CORNER SE
DONATION LAND CLAIM JESSE OWNBY NO. 69 CORNER SE**COMMON CORNER(S):**

SOUTHWEST CORNER SECTION 33, T12S, R5W
 NORTHWEST CORNER SECTION 4, T13S, R5W
 NORTHEAST CORNER SECTION 5, T13S, R5W
 NORTHEAST CORNER JESSE OWNBY D.L.C. NO. 57, T13S, R5W

CORNER RECORDS (PREVIOUS RENEWALS, SURVEYS, ETC.)

- [01] ORIGINAL GLO (RECTANGULAR) SURVEY BY GEORGE W. HYDE, D.S., DATED MAY 5, 1853. *SET POST, CHARRED STAKE, MOUND AND TRENCH.*
- [02] ORIGINAL GLO (DLC) SURVEY BY DENNIS HATHORN, D.S., DATED AUGUST 27, 1856. *NO DESCRIPTION.*
- [03] COUNTY SURVEY NO. 737 BY W. C. GALLOWAY, D.S., DATED DECEMBER 14, 1920. *SET 3/4" SHAFT FROM OLD FENCE CORNERS (FIELD BOOK 28, PAGE 17).*
- [04] OLD CORNER RESTORSTION BOOK NO. 1, PAGE 155 BY W. C. GALLOWAY, C.S., DATED DECEMBER 1920. *SET 3/4" SHAFT FROM FENCES AND OTHER MEASUREMENTS WITH 2 IRON ACCESSORIES.*
- [05] CORNER RESTORATION NO. 1233. *TRANSCRIBED COPY OF RECORD [04] AND MAY CONTAIN ERRORS AND OMMISSIONS.*
- [06] MAP NO. 13-5-00004 BY W. C. GALLOWAY, C.S., DATED DECEMBER 18, 1920. *3/4" SHAFT 2 WITH ACCESSORIES.*
- [07] MAP OF COUNTY ROAD NO. 25260 BY W. C. GALLOWAY, C.S., DATED JUNE 23, 1928. *NO MONUMENT DESCRIPTION.*
- [08] GIS/DEA MAPPING PROJECT BY RAY WILSON, D.C.S., DATED JUNE 1997. *FOUND AND TIED 3/4" IRON ROD WITH RTK/GPS.*

COMMENTS/LOCATION/ETC:**HORIZONTAL AND VERTICAL INFORMATION:****HORIZONTAL DATUM:**

LATITUDE:
 LONGITUDE:

VERTICAL DATUM:

ELLIPSOID ELEVATION:
 ORTHOMETRIC ELEVATION:
 GEOID SEPERATION:

STATE PLANE COORDINATE SYSTEM:

N (Y):
 E (X):

SCALE FACTOR:
 COMBINED FACTOR:
 CONVERGENCE:

NOTES:

THIS IS A MICROSOFT WORD 97 DOCUMENT NAMED "25300100" CREATED FROM A BOILER PLATE DOCUMENT NAMED "HISTORY", WHICH HAS A STYLESHEET NAMED "CORNER" ATTACHED TO IT.
 INFORMATION IN **ITALICS** IS COUNTY STAFFS' INTERPRETATION OF THE RECORD.

FIRM/AGENCY: BENTON COUNTY SURVEYOR'S OFFICE
ADDRESS: 360 S.W. AVERY AVE. CORVALLIS OR 97333; PH. 757-6821
RESEARCH BY: CURTIS J. LIESENFELT, P.L.S.
DATA ENTRY BY: DAVID M. DEAN, P.L.S.

SEE CORNER HISTORY FORM FOR RECORDS ETC.

CORNER RESTORATION FIELD BOOK NUMBER 17 PAGE(S) 21 DATE 10/21/1998
TOWNSHIP 12 SOUTH, RANGE 5 WEST, WILLAMETTE MERIDIAN; SECTION 32 CORNER SE
DONATION LAND CLAIM JESSE OWNBY NO. 69 CORNER SE
CONDITION REPORT ; REFERENCED OUT ; RENEWED XX; SURVEYED IN

LOCATION AND COMMENTS:

CORNER IS LOCATED AT THE SOUTHEAST CORNER OF A CULTIVATED FIELD, 620' SOUTHERLY OF THE PHYSICAL CENTERLINE OF LLEWELLYN ROAD, 1.3' NORTH AND 2.0 FEET WEST OF A WOVEN AND BARBED WIRE FENCE. IT IS GOOD FOR PREMARKING AND HAS BEEN TIED INTO GPS CONTROL.

MONUMENTS AND ACCESSORIES FOUND (CONDITION AND SOURCE):

FOUND: 3/4" X 34" IRON ROD WITH 90°, 2" LONG ELBOW ON TOP FOR THE CORNER. (3/4" SHAFT AS PER RECORDS [03], [04] AND [06]).

FOUND: 1 1/2" IRON SHAFT WITH A 7/8" SQUARE HEAD ON TOP, BEARING N0°44'E, 649.88 FEET (BASIS OF BEARINGS) COMPARED TO N0°44'E, 650.43 FEET PER RECORDS [04] AND [06] AND N0°51'E, 650.43 FEET PER RECORD [07]. SAID SHAFT IS 9" BELOW GROUND SURFACE, 0.6' SOUTHERLY, 2.4' WESTERLY FROM THE CORNER OF A WOVEN AND BARBED WIRE FENCE RUNNING NORTH AND WEST, AND ON THE NORTH SIDE OF LLEWELLYN ROAD.

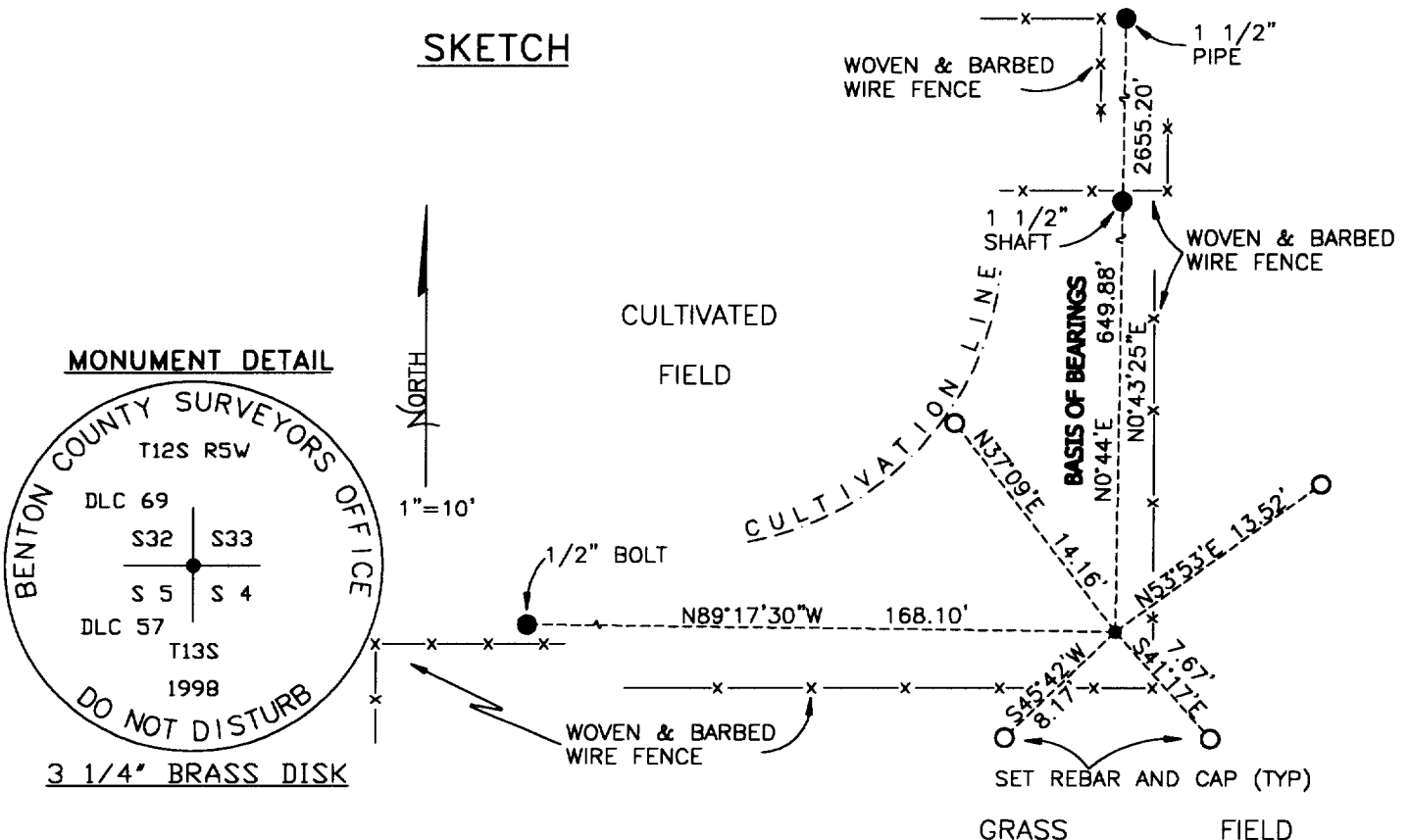
FOUND: 1 1/2" INSIDE DIAMETER IRON PIPE WITH THE TOP 8" BENT S10°E, 0.20' (TIED STRAIGHT PART), BEARING N0°43'25"E, 2655.20 FEET COMPARED TO N0°44'E, 2655.58 FEET PER RECORD [06] AND N0°51'E, 2655.58 FEET PER RECORD [07]. PIPE IS 1.3 FEET EASTERLY OF THE NORTHEAST CORNER OF A WOVEN AND BARBED WIRE FENCE AND 4.5 FEET NORTHERLY OF THE WESTERLY END OF A 12" CONCRETE CULVERT.

FOUND: 1/2" BOLT WITH 1" HEX HEAD BEARING N89°17'30"W, 168.10 FEET COMPARED TO 1/2" IRON ROD BEARING N89°53"W, 165.00' PER RECORD [04] AND [06]. BOLT IS 8" BELOW GROUND SURFACE, 1.1' N'LY AND 8' E'LY OF NW CORNER OF BARBED AND WOVEN WIRE FENCE.

MONUMENT SET (PROCEDURES AND DESCRIPTION):

SET: 2" INSIDE DIAMETER X 36" LONG IRON PIPE WITH A 3 1/4" BENTON COUNTY BRASS DISK, STAMPED AS SHOWN, IN THE SAME X, Y POSITION AS THE RECOVERED 3/4" IRON ROD. CUT ELBOW FROM SAID IRON ROD AND PLACED BOTH PIECES INSIDE THE NEW MONUMENT.

SKETCH



NEW ACCESSORIES:

- SET: REBAR (SEE NOTES) 18" BELOW GROUND SURFACE, BEARING N53°53'E, 13.52 FEET.
- SET: REBAR (SEE NOTES) 18" BELOW GROUND SURFACE, BEARING S41°17'E, 7.67 FEET.
- SET: REBAR (SEE NOTES) 18" BELOW GROUND SURFACE, BEARING S45°42'W, 8.17 FEET.
- SET: REBAR (SEE NOTES) 18" BELOW GROUND SURFACE, BEARING N37°09'W, 14.16 FEET.
- SET: 6 FOOT ORANGE FIBERGLASS "SURVEY MARKER" POST 1 FOOT NORTHERLY OF SET MONUMENT.

NOTES:

COMPASS DECLINATION IS 20° EAST. ALL MEASURED DISTANCES AND BEARINGS ARE TO THE CENTER OF THE OBJECT, UNLESS OTHERWISE NOTED. ALL SET REBAR ARE 5/8" X 30" AND HAVE A YELLOW PLASTIC CAP (STAMPED "BENTON COUNTY SURVEYOR") ATTACHED TO THE TOP.

THIS DOCUMENT WAS NAMED AND CREATED IN A MANNER SIMILAR TO THE HISTORY FORM. THE NAME OF THE BOILER PLATE IS "MONUMENT". THE BORDER, STAMP AND SKETCH ARE FROM AUTOCAD RELEASE 14.

THIS RESTORATION WAS PERFORMED AT THE DIRECTION AND APPROVAL OF THE BENTON COUNTY/DEPUTY COUNTY SURVEYOR. *[Signature]*

FIRM/AGENCY: BENTON COUNTY SURVEYOR'S OFFICE
ADDRESS: 360 S.W. AVERY AVE. CORVALLIS OR 97333; PH. 757-6821
SURVEYOR: CURTIS J. LIESENFELT, P.L.S.
SURVEY CREW: JOE MARDIS, P.L.S.

REGISTERED
 PROFESSIONAL
 LAND SURVEYOR

Curtis J. Liesenfelt
 OREGON
 JULY 17, 1986
 CURTIS J. LIESENFELT
 2213

LICENSE RENEWAL 12/31/1998