

CORNER FILE TRACKING

H:\Survey\Corners\Misc\Filetrac.doc

11/23/98

CORNER NUMBER
125873010

STEP	HISTORY()	RESTORATION()
Form Prepared, DB	3/9/05	4/25/05
Field Inspection, DB	4/19/05	4/19/05
Form Checked, DB	5/10/05	5/10/05
Form Edited, DB	5/10/05	5/10/05
Form Signed, DB	5/11/05	5/11/05
Counter Index	4/25/05	4/25/05
GIS Index	4/25/05	4/25/05
Authorize Payment, DB	—	—
Archive Digital Files	5/11/05	5/11/05
Collect Documents	5/10/05	5/10/05
Scanned	5/12/05	5/12/05
Copy For Filming	5/11/05	5/11/05
Filed, DB		
Finish index (count unit)	4/19/05	4/19/05
Filmed (Archived), DB		

(DB) = Entry needed in database (Access).

COMMENTS:

DATE 03/09/2005

TOWNSHIP 12 SOUTH, RANGE 5 WEST, WILLAMETTE MERIDIAN; SECTION 15 CORNER N/A
 DONATION LAND CLAIM ALFRED RHINEHART DLC # 73 CORNER N. E.

COMMON CORNER(S):

NONE

RECORDS (INFORMATION IN *BOLD ITALICS* IS COUNTY STAFFS' INTERPRETATION OF THE RECORD)

BASED ON EXTENSIVE RESEARCH AND RECOVERY OF EVIDENCE, THIS OFFICE HAS DETERMINED THAT MOST GENERAL LAND OFFICE SURVEYORS MEASURED TO THE FACE OF BEARING TREES.

- [01] GENERAL LAND OFFICE (GLO) NOTES BY DENNIS HATHORN D. S., DATED MAY 19, 1854. *SET POST; DEPOSITED SANDSTONE 4 X 4 X 6 INCHES AND DUG TRENCH FOR N. E. CORNER.*
- [02] COUNTY SURVEY NO. 621 (OLD NO. 268) FIELD NOTES (FIELD BOOK NO. 23 PG 51-55) BY W. C. GALLOWAY, C. S., DATED JANUARY 10, 1918. *RESET THE N. E. CORNER OF CLAIM #73; SET QUART BOTTLE 13" BELOW SURFACE, O' SAGE ORANGE TREE 12" DIA. BEARS N38°20'E, .344 CHS (22.70 FEET). O' SAGE ORANGE TREE 10" DIA. BEARS S71°E, .224 CHS (14.78 FEET).*
- [03] CORNER RESTORATION BOOK NO. 1 BY W. C. GALLOWAY C. S., DATED JANUARY 21, 1918. *N. E. CORNER OF ALFRED RHINEHART CL. 73, SET QUART BOTTLE 13" UNDER SURFACE O' SAGE ORANGE TREE 11" DIA. BEARS N38°20'E, .344 CHS (22.70 FEET). O' SAGE ORANGE TREE 10" DIA. BEARS S71°E, .224 CHS (14.78 FEET).*
- [04] BENTON COUNTY RESTORATION NO. 1343 BY W. C. GALLOWAY C. S., DATED JANUARY 21, 1918. *THIS IS TRANSCRIBED FROM RECORD NO [03] AND MAY CONTAIN ERRORS AND/OR OMISSIONS.*
- [05] BENTON COUNTY MAP NO. 12-5-00040 BY W. C. GALLOWAY C. S., DATED JANUARY – AUGUST 1918. *QUART BOTTLE 13" UNDER SURFACE O' SAGE ORANGE 11" DIA. BEARS N38°20'E, .344 CHS (22.70 FEET) O' SAGE ORANGE 10" DIA. BEARS S71°E, .224 CHS (14.78 FEET).*
- [06] BENTON COUNTY MAP NO. 12-5-00037 BY WALTER LARSEN D. C. S., DATED FEBUARY 2, 1922. *QUART BOTTLE.*
- [07] BENTON COUNTY MAP NO.12-5-00041 BY BENTON COUNTY SURVEYOR'S OFFICE DATED SEPTEMBER 1941. *QUART BOTTLE.*
- [08] COUNTY SURVEY NO. 9714 BY THEODORE JAMES LANGTON P. L. S., DATED APRIL 1, 2002. *N. E. CORNER OF A. RHINEHART D. L. C. NO 73, 10" DIA. O' SAGE ORANGE TREE PER COUNTY MAP NO. 12-5-00040 IS NOW 18" DIA. AND BEARS S71°32'E, 14.78 FEET TO CENTER OF TREE.*

NOTES:

THIS IS A MICROSOFT WORD 2000 DOCUMENT NAMED "25873010" CREATED FROM A BOILER PLATE DOCUMENT NAMED "HISTORY", WHICH HAS A STYLESHEET NAMED "CORNER" ATTACHED TO IT.

FIRM/AGENCY: BENTON COUNTY SURVEYOR'S OFFICE
ADDRESS: 360 S.W. AVERY AVE. CORVALLIS OR 97333; PH. 766-6821
RESEARCH BY: DAVID M. DEAN, P.L.S.
DATA ENTRY BY: ADAM CASALEGNO, SURVEY TECH.

BENTON COUNTY CORNER RESTORATION FORM, PAGE 1 OF 2, 125873010R2

SEE CORNER HISTORY FORM FOR RECORDS ETC.

CORNER RESTORATION FIELD BOOK NUMBER 23 PAGE(S) 22

DATE 04/19/2005

TOWNSHIP 12 SOUTH, RANGE 5 WEST, WILLAMETTE MERIDIAN; SECTION 15 CORNER NONE

DONATION LAND CLAIM ALFRED RHINEHART NO. 73 CORNER NORTHEAST

CONDITION REPORT ; REFERENCED OUT ; RENEWED XX ; SURVEYED IN

LOCATION AND COMMENTS:

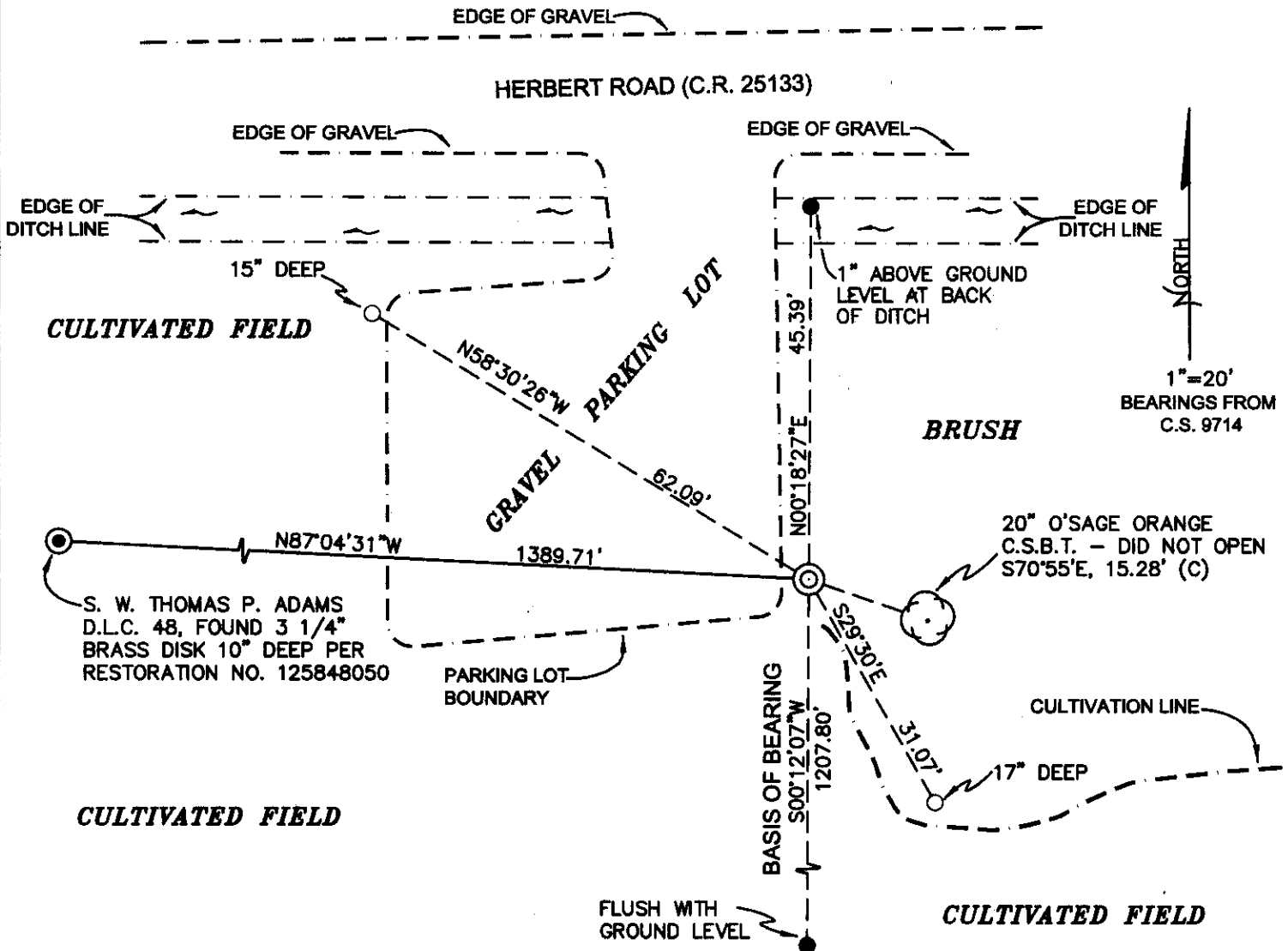
CORNER IS LOCATED 50 FEET SOUTH OF HERBERT ROAD (C.R. NO. 25133) AND 5 FEET EAST OF A SMALL GRAVEL PARKING LOT. TO REACH CORNER FROM THE JUNCTION OF HIGHWAY 99W AND HERBERT ROAD, TRAVEL WESTERLY ON HERBERT ROAD FOR 0.57 MILES; THEN LEFT AT GRAVEL PARKING LOT. CORNER MAY BE OK FOR PREMARKING AND GPS CONTROL.

MONUMENTS AND ACCESSORIES FOUND (CONDITION AND SOURCE):

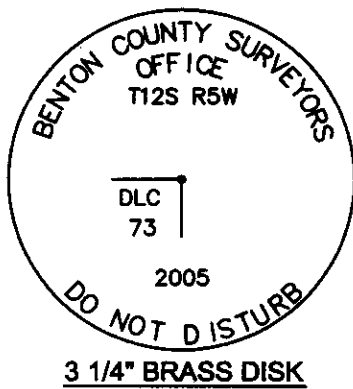
1. FOUND 5/8" IRON ROD WITH RED PLASTIC CAP MARKED "NORTHSTAR PLS 1823", 12" BELOW GROUND LEVEL FOR CORNER POSITION.
(SET 5/8" X 30" REBAR WITH RED PLASTIC CAP STAMPED "NORTHSTAR PLS 1823" FROM SOUTHEAST COUNTY SURVEYOR'S BEARING TREE PER RECORD [08]).
2. FOUND 5/8" IRON ROD WITH RED PLASTIC CAP MARKED "NORTHSTAR PLS 1823", FLUSH WITH GROUND LEVEL, S00°12'07"W, 1207.80 FEET. **BASIS OF BEARINGS FOR THIS RESTORATION.**
(STONE, S00°05'W, 1207.80 FEET PER RECORD [05]).
(STONE, S00°17'W, 1207.80 FEET PER RECORD [06]).
(STONE, S00°15'W, 1207.80 FEET PER RECORD [07]).
(SET 5/8" X 3" REBAR WITH RED PLASTIC CAP STAMPED "NORTHSTAR PLS 1823", S00°12'07"W, 1207.80 FEET PER RECORD [08]).
3. FOUND 3 1/4" BRASS DISK AT SW CORNER THOMAS ADAMS D.L.C. NO. 48, N87°04'31"W, 1389.71 FEET.
(SET 2" X 36" IRON PIPE WITH 3 1/4" BRASS CAP PER RESTORATION NO. 125848050 (ORIGINALLY FILED AS RESTORATION NO. 3613).
4. FOUND 20" OSAGE ORANGE COUNTY SURVEYOR'S BEARING TREE, S70°55'E, 15.28 FEET TO CENTER. SET ALUMINUM NAIL AND PLASTIC WASHER IN SOUTHWEST BASE FOR DISTANCE MEASUREMENT.
(10" OSAGE ORANGE, S71°E, 14.78 FEET PER RECORDS [02], [03] AND [05]).
(FOUND 18" OSAGE ORANGE, S71°32'E, 14.78 FEET PER RECORD [08]).

MONUMENT SET (PROCEDURES AND DESCRIPTION):

NO EVIDENCE OF QUART BOTTLE AS SET PER RECORD [02] COULD BE FOUND AFTER A THOROUGH SEARCH OF THE AREA. HELD THE 5/8" IRON ROD AS SET PER RECORD [08] FOR THE CORNER POSITION. LOWERED THE 5/8" IRON ROD TO 16" BELOW GROUND LEVEL AND SET 2" X 31 1/2" GALVANIZED IRON PIPE OVER IRON ROD WITH A 3 1/4" BRASS DISK CONCRETED IN THE TOP, 12" BELOW GROUND LEVEL, MARKED AS SHOWN ON PAGE 2 OF 2. SET A 6 FOOT ORANGE CARSONITE "SURVEY MARKER" POST 0.5 FEET EAST OF NEW MONUMENT.



MONUMENT DETAIL



LEGEND

- SET 5/8" X 30" REBAR WITH YELLOW PLASTIC CAP MKD "BENTON COUNTY SURVEYOR"
- FOUND 5/8" I.R. W/RED PLASTIC CAP MARKED "NORTHSTAR PLS 1823"
- ⊙ GOVERNMENT MONUMENT SET AS SHOWN
- ⊙ GOVERNMENT MONUMENT FOUND AS SHOWN
- ⊙ BEARING TREE AS NOTED
- C.S.B.T. COUNTY SURVEYORS BEARING TREE
- I.R. IRON ROD

NEW ACCESSORIES:

1. SET REBAR (SEE LEGEND) S29°30'E, 31.07 FEET, 17" DEEP AT NORTH EDGE OF CULTIVATED FIELD.
2. SET REBAR (SEE LEGEND) N58°30'26"W, 62.09 FEET, 15" DEEP AT THE N.W. CORNER OF PARKING LOT.

NOTES:

COMPASS DECLINATION IS 20° EAST. ALL MEASURED DISTANCES AND BEARINGS ARE TO THE CENTER OF THE OBJECT, UNLESS OTHERWISE NOTED. ALL BEARING TREES ARE PAINTED AND HAVE A B.T. TAG ATTACHED, FACING THE CORNER UNLESS OTHERWISE NOTED. ALL NEW BEARING TREES HAVE A PLASTIC WASHER (STAMPED "BENTON COUNTY SURVEYOR CORNER RESTORATION") ATTACHED (BY ALUMINUM NAIL) TO THE FACE, BELOW THE "BT" FOR DISTANCE AND ANGLE MEASUREMENT UNLESS OTHERWISE NOTED. THE DRAWING IS FROM AUTOCAD RELEASE 2002.

THIS RESTORATION WAS PERFORMED AT THE DIRECTION AND APPROVAL OF THE BENTON COUNTY SURVEYOR, DM

FIRM/AGENCY: BENTON COUNTY SURVEYOR'S OFFICE
 ADDRESS: 360 S.W. AVERY AVE. CORVALLIS OR 97333; PH. 766-6821
 PRESENT: DAVID M. DEAN, P.L.S. AND ADAM CASALEGNO, SURVEY TECH.
 EQUIPMENT: LEICA TCR 1105 WITH TDS ON BOARD

REGISTERED
 PROFESSIONAL
 LAND SURVEYOR

5/11/05 *David M. Dean*

OREGON
 JULY 13, 1984
 DAVID M. DEAN
 2090

RENEWAL DATE: 12/31/05

C.S. #266

N.W. corner of Sarah Adkins Cl. 45 T10-3
 Set 1 3/4" x 18" shaft cog on bottom, brick & glass around iron.
 Found parts of stone in bed, set before witness trees were gone.
 Fir 12" in dia. bears N 86° 10' E. 688 chs. not mkd. Stamp Sept. 27, 1937
 W " 10" " " " N 10° " W. 530 " SW. cor. born N 50° 25' E. 261
 " " " " " S 10° 07' E. 796 " SE " " S 84° 50' E. 604
 Witnesses same as last corner Dec. 5, 1917.

C.S. #267

N.W. corner of James M. Chisham Cl. 54 T. 12-6
 Set 1" x 20" pipe 2.00 chs. S. 0° 18' E. of N.E. cor. of Robert Irwin Cl. #55.
 Oak 6" in dia. bears N 13° E. .092 chs.
 Fir 16" " " " S 83° E. 328 "
 Oak 20" " " " S. 38° W 3.38 " std.
 Witnesses O.L. & W.E. Alford Dec. 12, 1917.

C.S. #268

N.W. corner of Alfred Rhinehart Cl. 73 T12-5
 Set 1 1/2" x 30" pipe Oak N 14° E down.
 Ash 9" in dia. bears S. 1° W. 3.28 chs. std.
 Witnesses Geo. R. and C.W. Rowland Jan. 10, 1918.

S.E. corner of Alfred Rhinehart Cl. 73 T12-5.
 Set 1 1/4" x 40" pipe set from w. road fence
 Anchor post 16" in dia. S.E. .554 chs.
 Set a stake South .394 chs.
 Post, corner of fence N.W. .648 chs.
 Witnesses Geo. R. & C.W. Rowland Jan. 12, 1918.

N.E. corner of Alfred Rhinehart Cl. 73 T. 12-5
 Set a Qt bottle Surface
 O sage Orange tree 11" in dia. bears N. 38° 20' E. .344 chs.
 " " " " 10" " " " S. 71° E. .224 "
 Witnesses Geo. R. & C.W. Rowland Jan. 21, 1918

C.S. #119
continued

1/4 sec. cor. between secs. 15 & 16 T. 13-5
 Set 3/4" x 45" bolt

Corner to Secs 9, 10, 15 & 16, N 0° 17' E 39.91 chs. which is
 a Yew anchor post, from post a 1 1/4" pipe bears N 89° 53' W 23.40 chs.
 Corner to Secs 15, 16, 21 & 22, S 0° 17' W 39.91 chs. which is
 a 1 1/4" pipe from this pipe a 1/4" pipe bears S 89° 22' W 4.387 & a 1/4" pipe
 bears S 89° 41' E 2.37 chs.

Witness Claude Buchanan March 1, 1918. & before this for last two

1/4 sec. cor. between secs. 14 & 15 T. 13-5
 Set 1/2" galv. pipe, A 1/2" galv. pipe on west side of state road
 bears N 89° 42' W. 18.229 chs.

Cor. set from sec. cors. N. & S. An oak stake N. 15 feet.
 Witness Claude Buchanan March 2, 1918.

N. E. corner of Alfred Rhinehart C1 73, Twp. 12-5

1343

Reestablishment by ~~W. C. Galloway~~ *

January 21, 1918

Set a qt. bottle 13" under surface

0' sage Orange tree 11" in diam bears N 38°20'E

0' sage Orange tree 10" in diam bears S 71° E

Witnesses George R. and C. W. Rowland

.344 chains
.224 chains

* BENTON COUNTY SURVEYOR'S OFFICE, SEE FIELD BOOK NO. 23, PAGES 51-54 (CJL 12/9/1992).

(14)