

CORNER FILE TRACKING

H:\Survey\Corners\Misc\Filetrac2.doc
06/15/2003

CORNER NUMBER
126200640

STEP	HISTORY()	RESTORATION()
Form Prepared, DB	7/25/08	7/30/08
Field Inspection, DB	7/29/08	7/29/08
Form Checked, DB	8/10/08	8/10/08
Form Edited, DB	8/11/08	8/11/08
Form Signed, DB	8/11/08	8/11/08
Counter Index	7/31/08	7/31/08
GIS Index	7/31/08	7/31/08
Authorize Payment, DB	—	—
Archive Digital Files	8/12/08	8/12/08
Collect Documents	N/A	N/A
Scanned	8/13/08	8/13/08
Copy For Filming	8/12/08	8/12/08
Filed, DB		
Finish index (count unit)	7/29/08	7/29/08
Filmed (Archived), DB		
Document No's to Andrew		

(DB) = Entry needed in database (Access).

COMMENTS:

126200640

DATE 07/25/2008TOWNSHIP 12 SOUTH, RANGE 6 WEST, WILLAMETTE MERIDIAN; SECTION 5 CORNER WEST 1/4DONATION LAND CLAIM NONE CORNER NONE**COMMON CORNER(S):**

EAST 1/4 SECTION 6

RECORDS (INFORMATION IN BOLD ITALICS IS COUNTY STAFFS' INTERPRETATION OF THE RECORD)

BASED ON EXTENSIVE RESEARCH AND RECOVERY OF EVIDENCE, THIS OFFICE HAS DETERMINED THAT MOST GENERAL LAND OFFICE SURVEYORS MEASURED TO THE FACE OF BEARING TREES.

- [01] GENERAL LAND OFFICE (GLO) NOTES BY HARVEY GORDON AND JOSIAH PRESTON, D.S., DATED AUGUST 18, 1854. SET QUARTER SEC POST FROM WHICH A W. OAK 14" DIAM BEARS ***N33°W, 82 LKS (54.12 FEET) DIST.***; A W. OAK 12" DIAM. BEARS ***N46°E, 37 LKS (24.42 FEET) DIST.***
- [02] COUNTY SURVEY 2373 FIELD NOTES (LOOSE LEAF) BY MARTIN BEYERLEIN, D.C.S., NO DATE GIVEN. FOUND OAK 15" HAS BEEN DEAD MANY YEARS WITH 2 ROTTED BLAZE HOLES POINTING ***S45°W***. SET 3/4" ROD IN OLD RAIL FENCE. MARKED A 21" FIR ***N47°45'E, 29.80 FEET, MARKED "CS231BT" AND A 21" FIR N77°36'W, 23.00 FEET, MARKED "CS231BT".***
- [03] COUNTY SURVEY 2373 BY CURTIS C. HANSON, C.S. DATED JUNE 16, 1952. 3/4" ROD. W. OAK 12" ***N56°E (N46°E) 0.37 CHAINS (24.42 FEET) STANDING. FIR 21" N77°36'W, 0.348 CHAINS (22.97 FEET); FIR 21" N47°45'E, 0.452 CHAINS (29.83 FEET).***
- [04] COUNTY SURVEY 5602 BY KENNETH M. WIGHTMAN, P.L.S., DATED NOVEMBER 7, 1973. FOUND 3/4" ROD PER CS 2373 AND EVIDENCE OF 3 BT'S: ***26" FIR N77°36'W, 22.97 FEET; 21" FIR STUMP N47°45'E, 28.83 FEET; OAK UPROOT N56°E, 24.75 FEET (ORIG). MARKED 8" FIR N28°E, 9.3 FEET.***

NOTES:

THIS IS A MICROSOFT WORD 2003 DOCUMENT NAMED "26200640" CREATED FROM A BOILER PLATE DOCUMENT NAMED "HISTORY", WHICH HAS A STYLESHEET NAMED "CORNER" ATTACHED TO IT.

FIRM/AGENCY: BENTON COUNTY SURVEYOR'S OFFICE
ADDRESS: 360 S.W. AVERY AVE. CORVALLIS OR 97333; PH. 766-6821
RESEARCH BY: DAVID M. DEAN, P.L.S.
DATA ENTRY BY: SAME

BENTON COUNTY CORNER RESTORATION FORM, PAGE 1 OF 2, 126200640R2

SEE CORNER HISTORY FORM FOR RECORDS ETC.

CORNER RESTORATION FIELD BOOK NUMBER 27 PAGE(S) 08

DATE 07/30/2008

TOWNSHIP 12 SOUTH, RANGE 06 WEST, WILLAMETTE MERIDIAN; SECTION 05 CORNER WEST 1/4

DONATION LAND CLAIM N/A CORNER N/A

CONDITION REPORT ; REFERENCED OUT ; RENEWED XX; SURVEYED IN

LOCATION AND COMMENTS:

CORNER IS LOCATED ON LEVEL GROUND IN A DOWN BARB AND WOVEN WIRE FENCE, IN A STAND OF MIXED CONIFERS, HARDWOODS AND BRUSH. TO REACH THE CORNER FROM THE JUNCTION OF HIGHWAY 20 AND WOODS CREEK ROAD, TRAVEL SOUTHWESTERLY ON WOODS CREEK ROAD FOR 2.45 MILES; THEN RIGHT ON PRIVATE ACCESS ROAD (PASSING THROUGH LOCKED GATE) FOR 0.04 MILES; THEN RIGHT FOR 0.35 MILES; THEN RIGHT FOR 0.36 MILES; THEN RIGHT FOR 0.66 MILES AND PARK. CORNER IS APPROXIMATELY 15 FEET EAST OF THE ACCESS ROAD. CORNER IS POOR FOR PREMARKING AND GPS CONTROL.

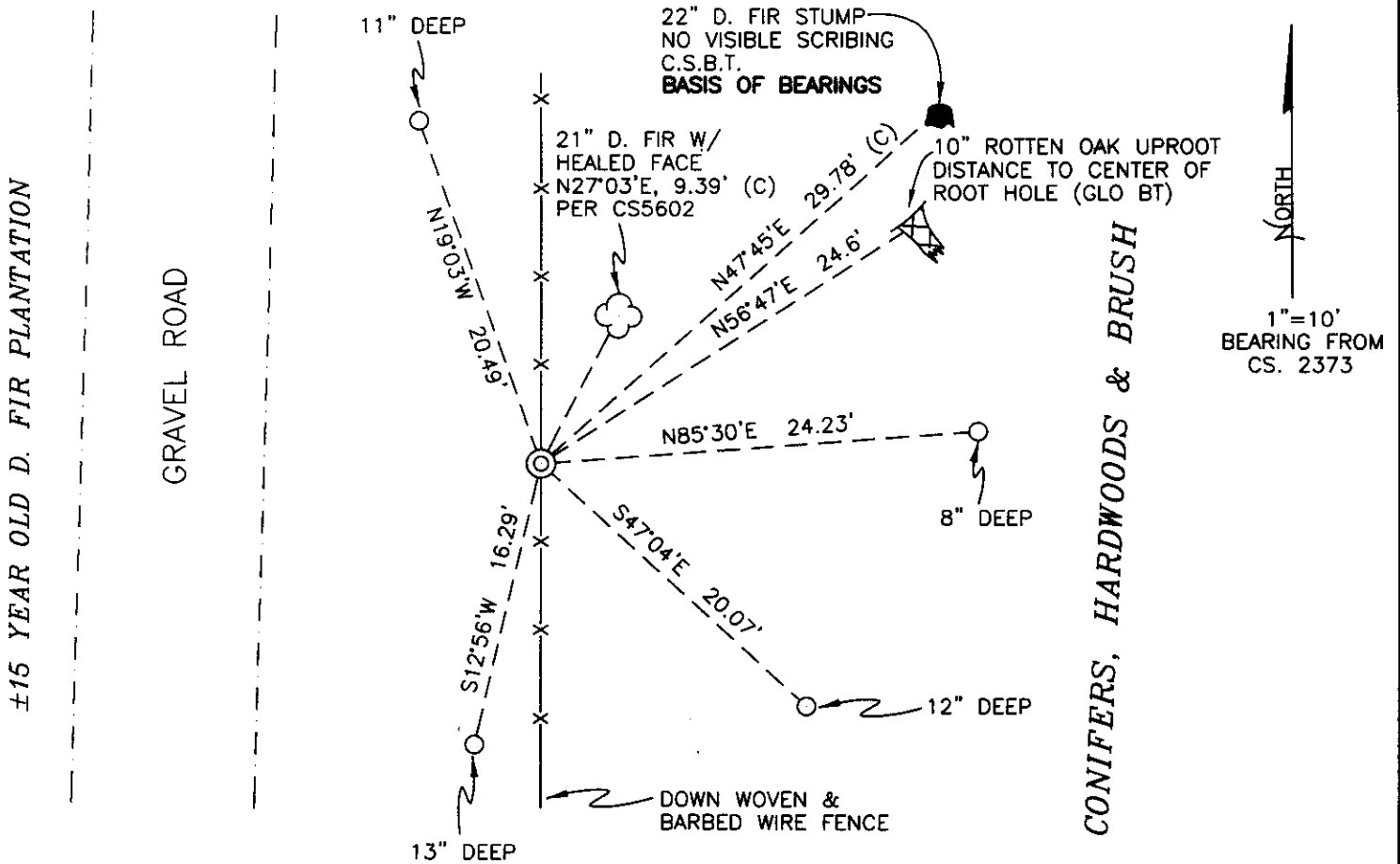
MONUMENTS AND ACCESSORIES FOUND (CONDITION AND SOURCE):

1. FOUND A 3/4" X 34" IRON ROD, 3" ABOVE GROUND LEVEL FOR THE CORNER POSITION.
(SET A POST PER RECORD [01]).
(SET A 3/4" ROD PER RECORD [02]).
(FOUND A 3/4" ROD PER RECORDS [03] AND [04]).
2. FOUND 10" REMAINS OF A ROTTING OAK UPROOT, N56°47'E, 24.6 FEET TO CENTER OF ROOT HOLE, NO VISIBLE SCRIBING FOUND.
(MARKED A 12" W. OAK, N46°E, 24.27 FEET PER RECORD [01]).
(FOUND A 15" DEAD OAK, N45°E± PER RECORD [02]).
(FOUND AN OAK UPROOT, N56°E, 24.75 FEET PER RECORD [04]).
3. FOUND A 22" ROTTEN D. FIR STUMP, N47°45'E, 29.78 FEET TO CENTER. NO VISIBLE SCRIBING FOUND, ONLY OLD AXE MARKS.
BASIS OF BEARINGS FOR THIS RESTORATION.
(MARKED A 21" FIR, N47°45'E, 29.80 FEET PER RECORD [02]).
(FOUND A 21" FIR STUMP, N47°45'E, 28.83 FEET PER RECORD [04]).
4. FOUND A 21" D. FIR, N27°03'E, 9.39 FEET TO CENTER, WITH A HEALED FACE.
(MARKED AN 8" FIR, N28°E, 9.30 FEET PER RECORD [04]).

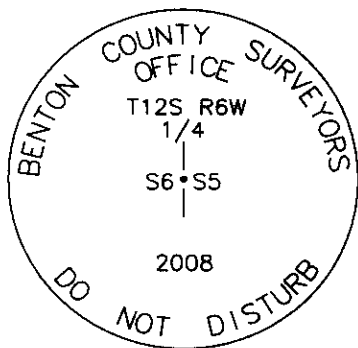
MONUMENT SET (PROCEDURES AND DESCRIPTION):

THE RECOVERED 3/4" X 34" IRON ROD COMPARES WELL WITH THE ONE RECOVERED COUNTY SURVEYOR'S BEARING TREE. WE HELD THE 3/4" IRON ROD FOR THE TRUE CORNER POSITION.

WE REMOVED THE 3/4" X 34" IRON ROD AND SET A 2" X 31 1/2" GALVANIZED IRON PIPE WITH A 3 1/4" ALUMINUM DISK CONCRETED IN THE TOP, FLUSH WITH THE GROUND AND MARKED AS SHOWN ON PAGE 2 OF 2. BURIED THE 3/4" IRON ROD IN A HORIZONTAL POSITION ON THE WEST SIDE OF THE NEW MONUMENT AND 4" BELOW GROUND LEVEL. SET A 6 FOOT ORANGE CARSONTIE "SURVEY MARKER" POST, 0.5 FEET NORTH OF THE NEW MONUMENT.



MONUMENT DETAIL



3 1/4" ALUMINUM DISK

LEGEND

- SET 5/8" X 30" REBAR WITH YELLOW PLASTIC CAP MKD "BENTON COUNTY SURVEYOR"
- (C) MEASUREMENT TO CENTER
- ⊙ GOVERNMENT MONUMENT SET AS SHOWN
- ☁ BEARING TREE AS NOTED
- C.S.B.T. COUNTY SURVEYORS BEARING TREE
- GLO GENERAL LAND OFFICE
- 🌳 BEARING TREE STUMP AS NOTED
- 🏗 UPROOTED STUMP

NEW ACCESSORIES:

1. SET REBAR (SEE LEGEND) 11" BELOW GROUND LEVEL, N19°03'W, 20.49 FEET.
2. SET REBAR (SEE LEGEND) 13" BELOW GROUND LEVEL, S12°56'W, 16.29 FEET.
3. SET REBAR (SEE LEGEND) 12" BELOW GROUND LEVEL, S47°04'E, 20.07 FEET.
4. SET REBAR (SEE LEGEND) 8" BELOW GROUND LEVEL, N85°30'E, 24.23 FEET.

NOTES:

COMPASS DECLINATION IS 20° EAST. ALL MEASURED DISTANCES AND BEARINGS ARE TO THE CENTER OF THE OBJECT, UNLESS OTHERWISE NOTED. ALL BEARING TREES ARE PAINTED AND HAVE A B.T. TAG ATTACHED, FACING THE CORNER UNLESS OTHERWISE NOTED. ALL NEW BEARING TREES HAVE A PLASTIC WASHER (STAMPED "SURVEYOR MARKER DO NOT REMOVE") ATTACHED BY AN ALUMINUM NAIL TO THE FACE, BELOW THE "BT" FOR DISTANCE AND ANGLE MEASUREMENT UNLESS OTHERWISE NOTED. THE DRAWING IS FROM AUTOCAD RELEASE 2008.

THIS RESTORATION WAS PERFORMED AT THE DIRECTION AND APPROVAL OF THE BENTON COUNTY SURVEYOR RW

FIRM/AGENCY: BENTON COUNTY SURVEYOR'S OFFICE
 ADDRESS: 360 S.W. AVERY AVE. CORVALLIS, OR. 97333; PH. 766-6821
 PRESENT: BERNIE ALTENBACH AND TYLER OTT SURVEY TECH.
 EQUIPMENT: LEICA TCR 1105 WITH TDS ONBOARD

REGISTERED
 PROFESSIONAL
 LAND SURVEYOR

8/11/08 *David M. Dean*

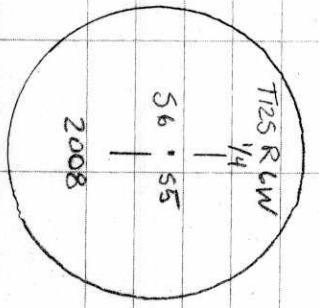
OREGON
 JULY 13, 1984
 DAVID M. DEAN
 2090

RENEWAL DATE: 12/31/09

126200640

RENOVATION 6:5 12:6

FD 3/4" x 3/4" IRON ROD, 3" ABOVE GROUND LEVEL,
 IN A DOWN NORTH-SOUTH BAR & DOWNEN WIRE
 FENCE. SET A 2" x 3 1/2" GALV. I.P. w/ 3/4" AL.
 DISK MARKED AS SHOWN. FD THE NE CSBT.
 22" ROTTEN D-FIR STUMP, WITH NO MARKS VISIBLE,
 EXCEPT OLD AXE MARKS. FD THE NE GLD BT: FD"
 ROTTING REMAINS OF AN OAK D-ROOT, NO MARKS
 VISIBLE. FD BT FERCS 5602. 21" D-FIR
 WITH HEALED FRAKE. REMOVED 3/4" I.P. & BURIED
 IT HORIZONTALLY, 4" BELOW GROUND LEVEL ON THE
 WEST SIDE OF THE NEW MONUMENT. SET
 A 6' ORANGE CARBONITE "SURVEY MARKER"
 POST, 0.5' NORTH OF NEW MONUMENT
 CORNER IS POOR FOR REMARKS AND
 GDS CONTROL.



CLEHE/WHEM
 80F, 29.0" HG
 LECA TR 1105/TDS

7-28-08
 BAIDENBACH
 T. OTT

27/8

± 15 YEAR OLD D-FIR PLANTATION

