

CORNER FILE TRACKING

F:\Survey\Corners\Misc\Filetrac.doc

8/11/97

CORNER NUMBER
126240100

STEP	HISTORY()	RESTORATION(2)
Form Prepared, DB	10/5/97	9/15/97
Field Inspection, DB	—	9/16/97
Form Checked, DB	12/15/97	9/12/97
Form Edited, DB	"	—
Form Signed, DB	—	—
Authorize Payment, DB	—	10/9/97
Archive Digital Files	12/15/97	—
Collect Documents	"	12/15/97
Copy For Filming	"	"
Filmed	6/30/98	6/30/98
Scanned (Archived), DB	7/20/98	7/20/98
Indexed		
Update Database		
Filed, DB		

(DB) = Entry needed in database (Access).

COMMENTS:

12-6
30
5
13

CORNER HISTORY		T 12 S, R 6 W		SECTION 32 D.L.C.		CORNER 5/4 CORNER		# 240100
NO.	DATE	SOURCE	SURVEYOR	MONUMENTS AND ACCESSORIES		COMMENTS		
1	2/28/1855	ORIG. SLO	HARVEY GORDON & JOSIAH PRESTON	SET POST @ 2 BT'S, NEAR TO FENCE				1
								2
2	-	PROG. REC. BK #1, P. 212	W. C. GALLOWAY	FND. BT'S, SET 1/2" PIPE @ 1 NEW BT				3
								4
3		REST. 1478		TRAIL COPY OF REC. [02] + MAP CONTAIN E+D				5
								6
4	-	MAP NO. 12-6-00033	BENTON COUNTY	1/2" PIPE @ 3 BT'S, 1 STD.				7
								8
5	-	STARKER FORESTS	STARKER FORESTS	NO DESC.				9
								10
6	-	"	"	1/2" PIPE @ 3 BT'S				11
								12
7	4/5/1972	"	"	" " " " "		DIFF. SIZE: FOR BT'S		13
								14
								15
								16
								17
								18
								19
								20
								21
								22
								23
								24
								25
								26
								27
								28
								29
								30
								31

1478/1479

$\frac{1}{4}$ -Section corner on south of section 32, Twp. 12-6

1478

Reestablishment by W. C. Galloway

November 1936

Set a $\frac{1}{2}$ " galvanized pipe

Maple 7" in diam bears South

Ash 5" in diam bears N 19° W

Maple 22" in diam bears S 33° E

.030 chains

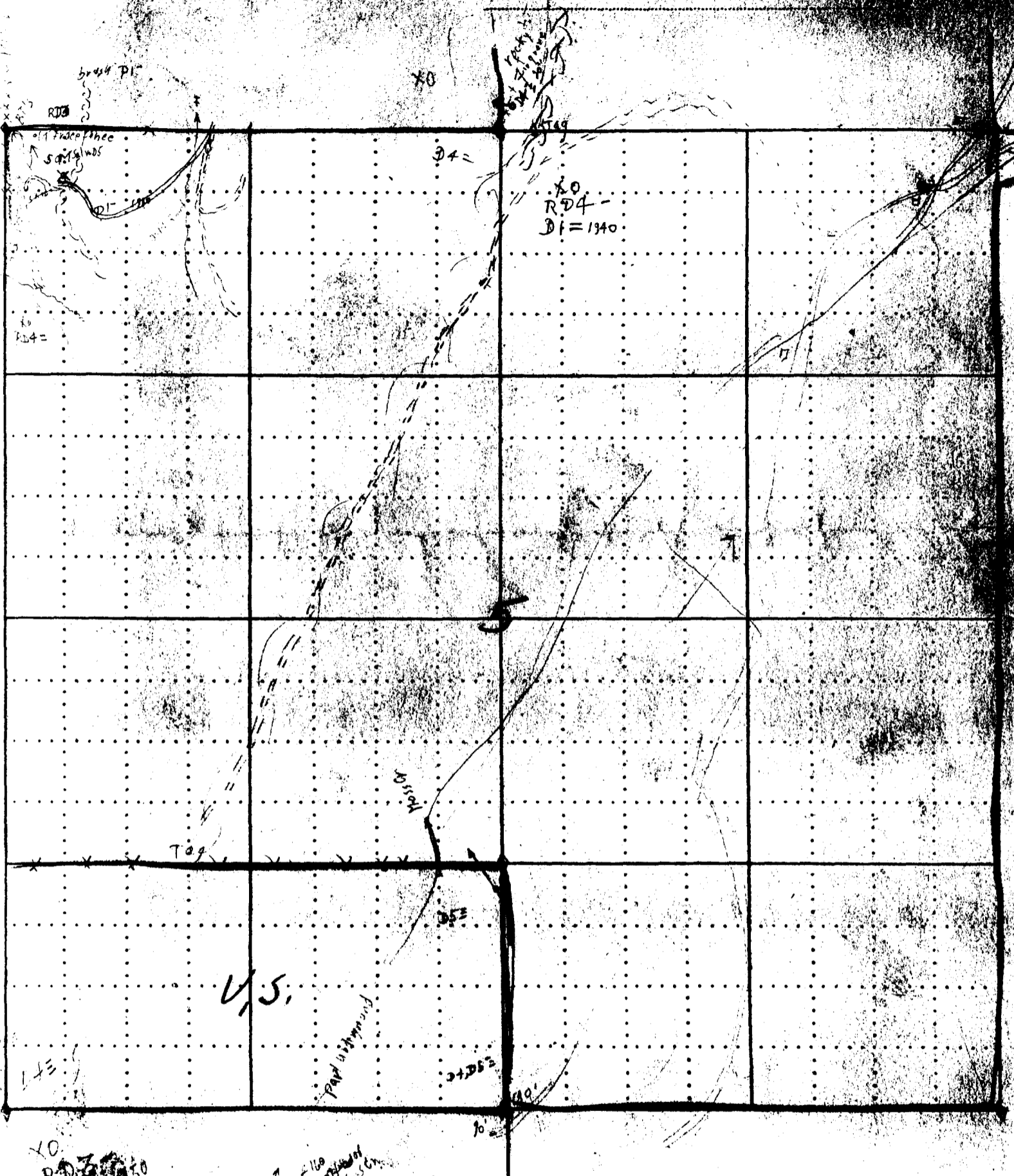
.57 chains

.055 chains

T. 13 R. 6 S. 34

Mapped by _____

Scale _____



Stump 470' 174
Fir 5" N 29° W 663

8444

N 89° 12' W

MAP - STARKER FORESTS

T. 13

R. 6

Sec.

Subdiv.

Mapped by

Scale

Inches

194

1/2" pino 3/4 Coro - 532

Maple 3" S 0.030
Ash 5" N 19° W 157
Maple 2.2" S 33° E 0.55

Fir 15" S 53° E 0.43
Fir 15" S 30° W 0.52
Fir 12" S 0° W 0.03

83
3-1
122

Tr. 40' S 13° E = 12.2 F + W
S 10' N 10° E
Fir 12" S 5° E 0.153
Fir 11" S 10° E 0.200
Fir 12" N 17° W 0.40
Fir 8" N 27° W 0.216

375

Red fir 12" S 65° W 30
Red fir 8" N 10° W 5.8 E

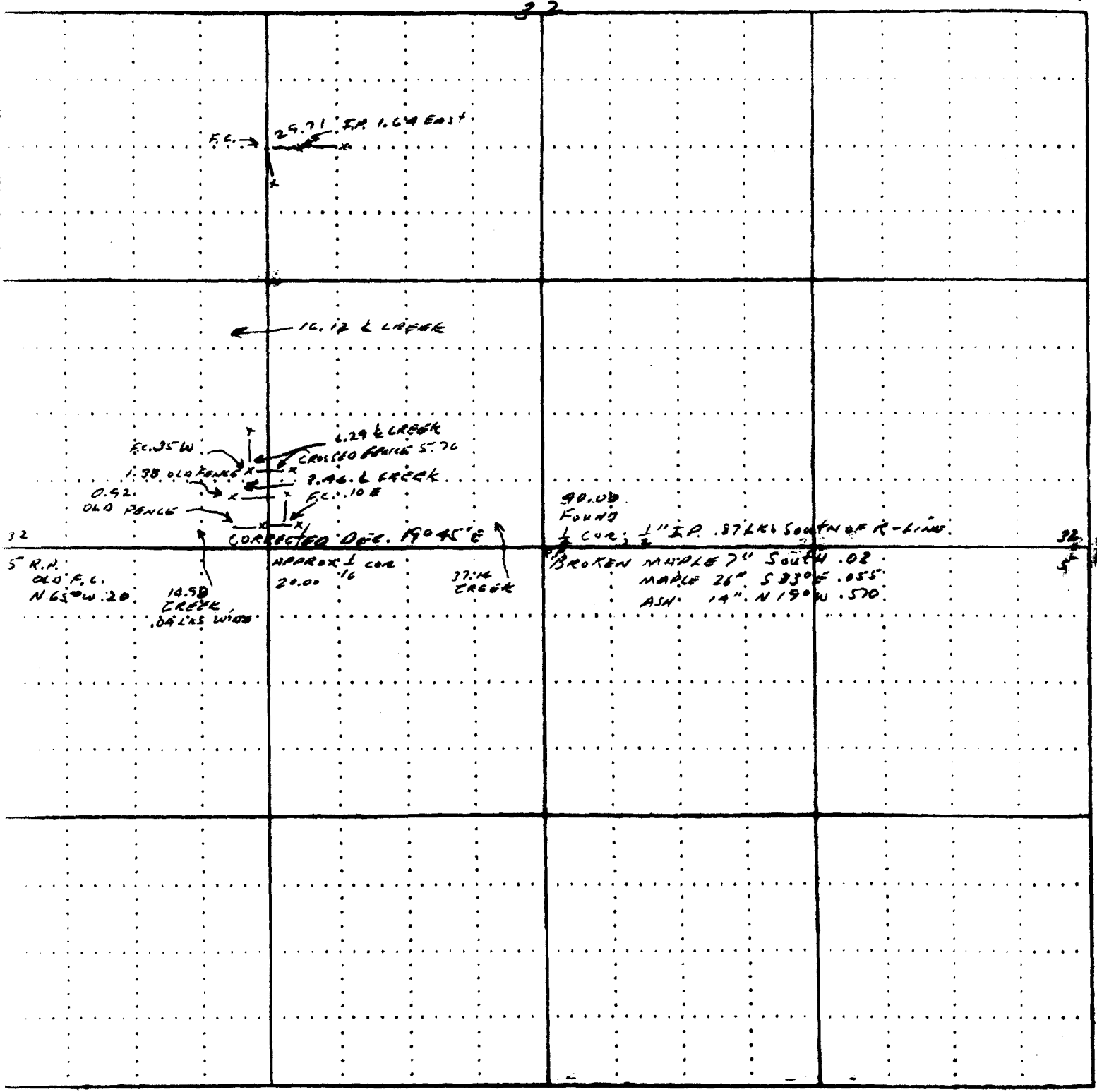
Red fir 14" N 41° E 0.09
Red fir 6" S 57° E 0.79
Red fir 9" S 54° W 0.12
Red fir 12" N 20° W 0.20

MAP - STARKER FORESTS

T. 12 R. 6 Sec. 32 Subdiv.

Mapped by MILWAUKEE BUSH Scale 5 inches = 1 Mile

9-5 1924



**BENTON COUNTY CORNER RESTORATION FORM, PAGE 1 OF 1
SEE CORNER HISTORY FORM FOR RECORDS, ETC.**

CORNER RESTORATION FIELD BOOK NO. _____ PAGE _____ DATE 9-2-97
 TOWNSHIP 12 SOUTH, RANGE 6 WEST, W.M. SECTION 32 CORNER S1/4
 DONATION LAND CLAIM _____ CORNER _____
 CONDITION REPORT _____ REFERENCED OUT _____ RENEWED XX SURVEYED IN _____

LOCATION AND COMMENTS:

FROM THE JUNCTION OF ERVIN ROAD AND DECKER ROAD, DRIVE SE ON DECKER ROAD FOR 600'. TAKE GRAVEL ROAD TO RIGHT FOR 0.3 MILES TO FORK. TAKE LEFT FORK FOR 0.15 MILES TO FORK. TAKE RIGHT FORK FOR 0.65 MILES TO JUNCTION. CORNER IS 300' WEST OF JUNCTION. CORNER IS IN RECENT CLEARCUT, ON WEST SLOPE OF SPUR RIDGE, AT HEAD OF DRAW, AND S30°W, 150' SW OF SMALL POND.

MONUMENTS AND ACCESSORIES FOUND (CONDITION AND SOURCE):

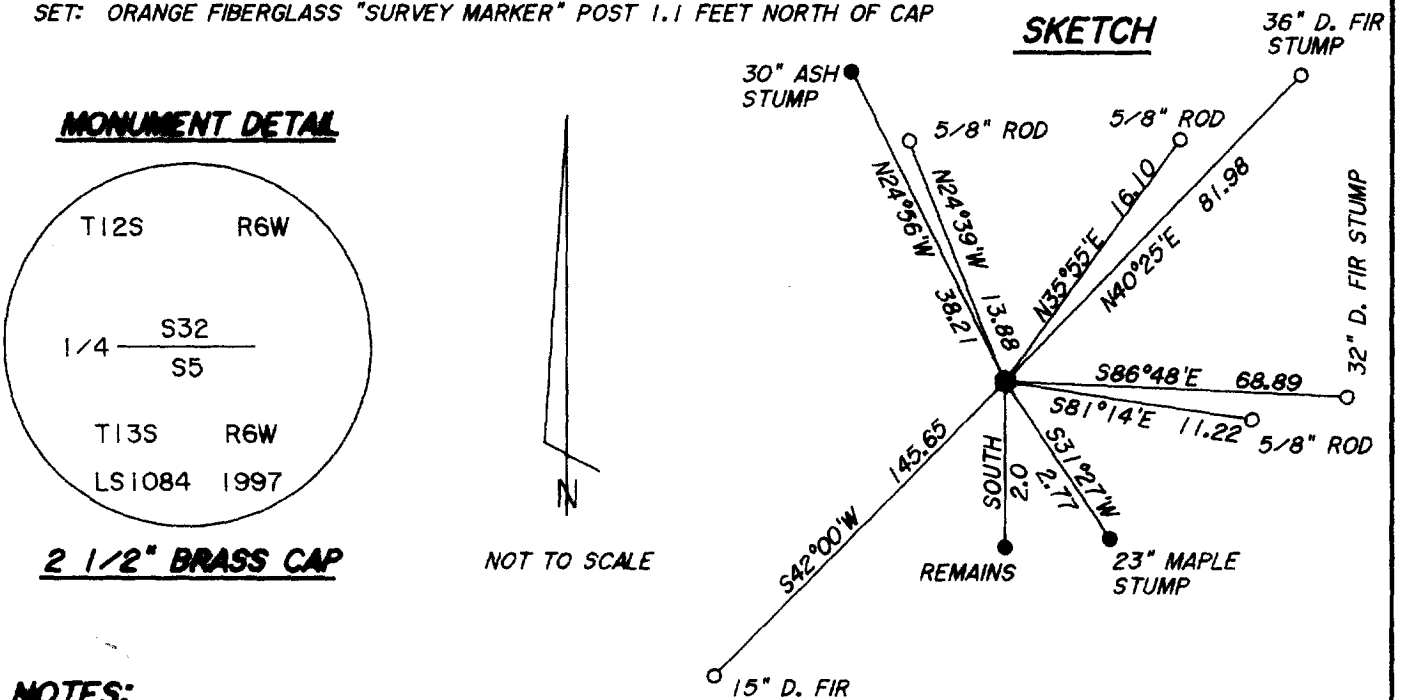
- FOUND: 1/2" X 30" IRON PIPE AS PER RECORDS [2], [3], [4], [6], AND [7]
- FOUND: 30" DOUBLE ASH STUMP, N24°56'W, 38.21 FT. (TO SPIKE AND BRASS WASHER SET IN CENTER OF TOP OF NE TRUNK) - COULD BE OUTGROWTH OF ORIGINAL NW BT (5" ASH, N19°W, 37.62 FT.)
- FOUND: 23" MAPLE STUMP, S31°27'E, 2.77 FT. (TO PK NAIL AND BRASS WASHER SET IN FACE) - HEALED FACE (22" MAPLE, S33°E, 3.63 FT. AS PER RECORDS [2], [3], [4], AND [6]) (26" MAPLE, S33°E, 3.63 FT. AS PER RECORD [7])
- FOUND: ROTTED MAPLE REMAINS, SOUTH 2.0 FT. - NO MARKS VISIBLE (7" MAPLE, SOUTH, 1.98 FT. AS PER RECORDS [1], [2], [3], [4], AND [6]) (7" BROKEN MAPLE, SOUTH, 1.98 FT. AS PER RECORD [7])

MONUMENT SET (PROCEDURES AND DESCRIPTION):

REFERENCED 1/2" PIPE. REMOVED PIPE AND REPLACED WITH 2" INSIDE DIAMETER X 30" LONG IRON PIPE, WITH 2 1/2" BRASS CAP, STAMPED AS SHOWN. BUILT MOUND OF STONE AROUND CORNER. BURIED PIPE ALONGSIDE CAP.

NEW ACCESSORIES:

- SET: 15" D. FIR, S42°00'W, 145.65 FT. (TO NAIL AND PLASTIC WASHER SET IN FACE) MARKED: "1/4 S5 BT"
- SET: 36" D. FIR STUMP, N40°25'E, 81.98 FT. (TO SPIKE AND BRASS WASHER SET IN CENTER OF TOP OF STUMP)
- SET: 32" D. FIR STUMP, S86°48'E, 68.89 FT. (TO SPIKE AND BRASS WASHER SET IN CENTER OF TOP OF STUMP)
- SET: 5/8" X 30" IRON ROD WITH PLASTIC CAP (LS1084), N24°39'W, 13.88 FT.
- SET: 5/8" X 30" IRON ROD WITH PLASTIC CAP (LS1084), N35°55'E, 16.10 FT.
- SET: 5/8" X 30" IRON ROD WITH PLASTIC CAP (LS1084), S81°14'E, 11.22 FT.
- SET: ORANGE FIBERGLASS "SURVEY MARKER" POST 1.1 FEET NORTH OF CAP



NOTES:

BASIS OF BEARINGS IS A HAND COMPASS (SET AT 20° EAST DECLINATION) TO THE SW BT SET. ALL BT'S ARE PAINTED AND HAVE A BT TAG ATTACHED. ALL WASHERS ARE STAMPED "BENTON COUNTY SURVEYOR".

FIRM/AGENCY: PETERSON & ASSOCIATES
ADDRESS: 8155 NW MITCHEL DR - CORVALLIS, OR
SURVEYOR: JIM S. PETERSON PH. 757-1794
SURVEY CREW: COLTER HESSEL - BRIAN PETERSON

REGISTERED PROFESSIONAL LAND SURVEYOR

[Signature]

OREGON
 JULY 31, 1976
 JIM S. PETERSON
 1084

EXPIRES: 12-31-98

DATE 10/15/1997TOWNSHIP 12 SOUTH, RANGE 6 WEST, WILLAMETTE MERIDIAN; SECTION 32 CORNER S 1/4
DONATION LAND CLAIM _____ CORNER _____**COMMON CORNER(S):**

THE NORTH QUARTER CORNER OF SECTION 5 IN TOWNSHIP 13 SOUTH, RANGE 6 WEST.

CORNER RECORDS (PREVIOUS RENEWALS, SURVEYS, ETC.)

- [01] ORIGINAL GLO SURVEY BY HARVEY GORDON AND JOSIAH PRESTON DATED FEBRUARY 28, 1855. *SET POST WITH TWO BEARING TREES, MEASURED TO FACE.*
- [02] OLD CORNER RESTORATION BOOK NO. 1, PAGE 212 BY W. C. GALLOWAY (NO DATE). *FOUND BEARING TREES, SET 1/2" PIPE WITH ONE NEW BEARING TREE.*
- [03] CORNER RESTORATION 1478. *TRANSCRIBED COPY OF RECORD [02] AND MAY CONTAIN ERRORS AND OMISSIONS.*
- [04] MAP NUMBER 12-6-00033 BY BENTON COUNTY SURVEYORS (NO DATE). *1/2" PIPE WITH THREE BEARING TREES, ONE STANDING.*
- [05] STARKER FORESTS MAP BY STARKER FORESTS (NO DATE). *NO DESCRIPTION.*
- [06] STARKER FORESTS MAP BY STARKER FORESTS (NO DATE). *1/2" PIPE WITH THREE BEARING TREES.*
- [07] STARKER FORESTS MAP BY STARKER FORESTS DATED APRIL 5, 1972. *1/2" PIPE WITH THREE BEARING TREES.*

COMMENTS/LOCATION/ETC:**NOTES:**

THIS IS A MICROSOFT WORD (VERSION 5.0) DOCUMENT NAMED "26240100" CREATED FROM A BOILER PLATE DOCUMENT NAMED "HISTORY", WHICH HAS A STYLESHEET NAMED "CORNER" ATTACHED TO IT.
INFORMATION IN **BOLD ITALICS** IS COUNTY STAFFS' INTERPRETATION OF THE RECORD.

FIRM/AGENCY: BENTON COUNTY SURVEYOR'S OFFICE
ADDRESS: 360 S.W. AVERY AVE. CORVALLIS OR 97333; PH. 757-6821
RESEARCH BY: CURTIS J. LIESENFELT
DATA ENTRY BY: ROSE LINDGREN