

**126240500**

## CORNER FILE TRACKING

<b>CORNER NUMBER</b>
<b>126240500</b>

STEP	HISTORY	RESTORATION
Form Prepared, DB	11/16/22	1/11/23
Field Inspection, DB	11/09/22	11/09/22
Finish index (count unit)	11/16/22	11/09/22
Counter Index	11/09/22	11/09/22
GIS Index Form	11/16/22	11/09/22
Checked, DB	1/12/23	1/12/23
Form Edited, DB	1/12/23	1/12/23
Form Signed, DB	1/12/23	1/12/23
Authorize Payment, DB	—	—
Archive Digital Files	1/12/23	1/12/23
Collect Documents	1/12/23	1/12/23
PDF File	1/23/23	1/23/23
Copy For Filming	1/23/23	1/23/23
Scanned (pdf to laserfiche)	1/23/23	1/23/23
Filmed (Archived), DB		
Filed, DB		

(DB) = Entry needed in database (Access).

### COMMENTS:

DATE 11/16/2022TOWNSHIP 12 SOUTH, RANGE 6 WEST, WILLAMETTE MERIDIAN; SECTION 8 CORNER SOUTH 1/4DONATION LAND CLAIM N/A CORNER N/A**COMMON CORNER(S):**

NORTH 1/4 CORNER SECTION 17

**RECORDS (INFORMATION IN *BOLD ITALICS* IS COUNTY STAFFS' INTERPRETATION OF THE RECORD)**

BASED ON EXTENSIVE RESEARCH AND RECOVERY OF EVIDENCE, THIS OFFICE HAS DETERMINED THAT MOST GENERAL LAND OFFICE SURVEYORS IN BENTON COUNTY BEFORE 1890 MEASURED TO THE FACE OF BEARING TREES.

- [01] GENERAL LAND OFFICE (GLO) NOTES BY HARVEY GORDON, D.S., AND JOSIAH W. PRESTON, D.S., DATED AUGUST 11, 1854. SET POST FROM WHICH A W. OAK 8" DIA BEARS *S74°W, 73 LINKS (48.18 FEET)*; W. OAK 8" DIA BEARS *N83-1/2°W, 31 LINKS (20.46 FEET)*.
- [02] BENTON COUNTY SURVEY NO. 1214 (OLD NO. 340) FIELD NOTES (FIELD BOOK 65, PAGE 7) BY W. W. LARSEN, D.C.S., NO DATE GIVEN. 6" X 12" X 14" STONE MARKED "CS". OAK 8" DIA (GLO BT) BEARS *S74°W, 0.73 CHAINS (48.18 FEET)*, STANDING; OAK 8" DIA (GLO BT) BEARS *N83-1/2°W, 0.31 CHAINS (20.46 FEET)*, STANDING; FIR 16" DIA BEARS *N23°E, 0.185 CHAINS (12.21 FEET)*; FIR 10" DIA BEARS *S55°E, 0.270 CHAINS (17.82 FEET)*.
- [03] BENTON COUNTY CORNER RESTORATION BOOK NO. 1, PAGE 190, BY W. W. LARSEN, D.C.S., DATED 1930. STAKE – STONE 6" X 12" X 14" MARKED "CS". OAK 8" DIA (GLO BT) BEARS *S74°W, 0.73 CHAINS (48.18 FEET)*, STANDING; OAK 8" DIA (GLO BT) BEARS *N83-1/2°W, 0.31 CHAINS (20.46 FEET)*, STANDING; FIR 16" DIA (CSBT) BEARS *N23°E, 0.185 CHAINS (12.21 FEET)*; FIR 10" DIA (CSBT) BEARS *S55°E, 0.27 CHAINS (17.82 FEET)*.
- [04] BENTON COUNTY CORNER RESTORATION NO. 1398. TRANSCRIBED FROM RECORD [03] AND MAY CONTAIN ERRORS AND/OR OMISSIONS.
- [05] BENTON COUNTY MAP NO. 12-6-00024 BY UNKNOWN DRAFTSMAN, NO DATE GIVEN. STONE 6" X 12" X 14" "CS" "+". OAK 8" DIA (GLO BT) BEARS *S74°W, 0.73 CHAINS (48.18 FEET)*, STANDING; OAK 8" DIA (GLO BT) BEARS *N83-1/2°W, 0.31 CHAINS (20.46 FEET)*, STANDING; FIR 16" DIA (CSBT) BEARS *N23°E, 0.185 CHAINS (12.21 FEET)*; FIR 10" DIA (CSBT) BEARS *S55°E, 0.270 CHAINS (17.82 FEET)*.
- [06] BENTON COUNTY SURVEY NO. 1969 BY OTTO H. MEYER, P.E., DATED NOVEMBER 24, 1947. STONE IN PLACE.
- [07] BENTON COUNTY SURVEY NO. 5949 BY ARNOLD BRUBAKER, P.L.S., DATED SEPTEMBER 22, 1975. FOUND CS STONE 6" X 12" X 14". D. FIR 10" DIA (CSBT) BEARS *S55°E, 0.27 CHAINS (17.82 FEET)*; D. FIR 16" DIA (CSBT) BEARS *N23°E, 0.185 CHAINS (12.21 FEET)*; OAK 8" DIA (GLO BT) BEARS *N83-1/2°W, 0.31 CHAINS (20.46 FEET)*; OAK 8" DIA (GLO BT) BEARS *S74°W, 0.73 CHAINS (48.18 FEET)*.
- [08] BENTON COUNTY SURVEY NO. 7716 BY MARTIN C. STEWART, P.L.S., DATED DECEMBER 30, 1984. FOUND 12" X 12" X 6" STONE WITH P-K NAIL AND MARKED "CS" FROM WHICH A 34" DOUG. FIR WITH HEALED DOUBLE BLAZE (CSBT) BEARS *N21°W, 12.0 FEET*; A 20" DOUG. FIR STUMP WITH HEALED BLAZE (CSBT) BEARS *S59°E, 18.0 FEET*. MARKED A 9" DOUG. FIR BEARS *S8°W, 16.4 FEET*.
- [09] BENTON COUNTY SURVEY NO. 8416 BY THEODORE JAMES LANGTON, P.L.S., DATED MAY 7, 1990. 10" X 12" X ? STONE WITH NAIL IN IT. FOUND D. FIR 38" DIA (CSBT) BEARS *N22°E, 12.0 FEET, HEALED FACES*; D. FIR 11" DIA BEARS *S8°W, 16.4 FEET, HEALED FACE*.
- [10] BENTON COUNTY SURVEY NO. 9890 BY JIM S. PETERSON, P.L.S., DATED MAY 18, 2000. FOUND 10" X 12" X ?" STONE WITH NAIL IN TOP. FOUND FIR STUMP 20" DIA (CSBT) BEARS *S55°E, 0.270 CHAINS (17.82 FEET)*, HEALED FACE; FIR 40" DIA (CSBT) BEARS *N23°E, 0.185 CHAINS (12.21 FEET)*, HEALED FACE; ROTTED OAK UPROOT (GLO BT) BEARS *N83-1/2°W, 0.31 CHAINS (20.46 FEET)*, NO MARKS VISIBLE; ROTTED OAK – DOWN (GLO BT) BEARS *S74°W, 0.73 CHAINS (48.18 FEET)*, ROTTED FACE; FIR 16" DIA BEARS *S8°W, 16.4 FEET*.
- [11] BENTON COUNTY SURVEY NO. 9641 BY JIM S. PETERSON, P.L.S., DATED APRIL 26, 2001. FOUND 10" X 12" X ?" STONE WITH NAIL IN TOP. FOUND FIR STUMP 20" DIA (CSBT) BEARS *S55°E, 0.270 CHAINS (17.82 FEET)*, HEALED FACE; FIR 40" DIA (CSBT) BEARS *N23°E, 0.185 CHAINS (12.21 FEET)*, HEALED FACE; ROTTED OAK UPROOT (GLO BT) BEARS *N83-1/2°W, 31 LINKS (20.46 FEET)*, NO MARKS VISIBLE; ROTTED OAK – DOWN (GLO BT) BEARS *S74°W, 73 LINKS (48.18 FEET)*, ROTTED FACE; FIR 16" DIA BEARS *S8°W, 16.4 FEET*.
- [12] BENTON COUNTY CORNER RESTORATION NO. 126240500R2 BY BRIAN M. PETERSON, P.L.S., DATED MAY 25, 2004. FOUND 6" X 10" X 13" STONE MARKED "CS" WITH NAIL IN TOP FOR THE CORNER. FOUND ROTTED OAK UPROOT 12" DIA, WITH NO MARKS VISIBLE, BEARS *N80°38'W, 18.0 FEET* TO BASE OF UPROOT. THERE IS NO VISIBLE UPROOT HOLE TO DETERMINE ORIGINAL POSITION. FOUND OAK UPROOT 12" DIA, WITH NO MARKS VISIBLE, BEARS *S63°10'W, 51.5 FEET* TO BASE OF UPROOT. THERE IS NO VISIBLE UPROOT HOLE TO DETERMINE ORIGINAL POSITION. FOUND D. FIR STUMP 24" DIA (CSBT) WITH HEALED FACE BEARS *S57°50'E, 17.85 FEET* TO SPIKE AND BRASS WASHER SET IN TOP CENTER OF STUMP. FOUND D. FIR 40" DIA (CSBT) WITH HEALED FACE BEARS *N22°27'E (TO CENTER OF TREE), 12.21 FEET* TO NAIL AND PLASTIC WASHER SET IN SIDE CENTER. FOUND D. FIR 18" DIA WITH HEALED FACE BEARS *S5°30'W (TO CENTER OF TREE), 16.20 FEET* TO NAIL AND PLASTIC WASHER SET IN SIDE CENTER. REFERENCED AND REPLACED FOUND STONE WITH 2" INSIDE DIAMETER X 30" LONG ALUMINUM PIPE WITH 3-1/4" ALUMINUM CAP (WITH MAGNET UNDER CAP), STAMPED "BENTON COUNTY SURVEYOR T12S R6W S8 1/4 S17 2004 LS60065 DO NOT DISTURB", 2" ABOVE GROUND LEVEL. BURIED FOUND STONE ALONGSIDE CAP. SET W. FIR 8" DIA BEARS *N64°30'W, 35.10 FEET* TO AN ALUMINUM NAIL AND PLASTIC WASHER ATTACHED TO THE FACE BELOW THE "BT" (35.5 FEET TO SIDE CENTER), MARKED "1/4 S8 BT". SET D. FIR 17" DIA BEARS *S40°51'E, 34.88 FEET* TO AN ALUMINUM NAIL AND PLASTIC WASHER ATTACHED TO THE FACE BELOW THE "BT" (35.6 FEET TO SIDE CENTER), MARKED "1/4 S17 BT". SET ORANGE FIBERGLASS "SURVEY MARKER" POST 1 FOOT NORTH OF CAP.

FIRM/AGENCY: BENTON COUNTY SURVEYOR'S OFFICE

ADDRESS: 360 S.W. AVERY AVE., CORVALLIS, OR 97333; PH. 541-766-6821

RESEARCH BY: DAVID L. MALONE, P.L.S. DATA ENTRY BY: SAME

**BENTON COUNTY CORNER RESTORATION FORM, PAGE 1 OF 2, 126240500R3****SEE CORNER HISTORY FORM FOR RECORDS ETC.**

CORNER RESTORATION FIELD BOOK NUMBER 33 PAGE(S) 136-137 DATE 11/09/2022  
TOWNSHIP 12 SOUTH, RANGE 6 WEST, WILLAMETTE MERIDIAN; SECTION 8 CORNER SOUTH 1/4  
DONATION LAND CLAIM N/A CORNER N/A  
CONDITION REPORT    ; REFERENCED OUT X; RENEWED    ; SURVEYED IN    

**LOCATION AND COMMENTS:**

CORNER IS LOCATED ON A STEEP EAST-NORTHEAST SLOPE IN AN AREA OF MIXED AGE AND MIXED TYPE TREES TO THE SOUTH, WITH A CLEARCUT TO THE NORTHWEST AND ±15 YEAR OLD D. FIR TO THE NORTHEAST. TO REACH CORNER FROM THE INTERSECTION OF HIGHWAY 34 AND OLD PEAK ROAD, FOLLOW OLD PEAK ROAD FOR 4.01 MILES TO A GATED TIMBER ROAD TO THE LEFT, TURN LEFT FOR 0.26 MILES TO A 4 WAY INTERSECTION, TURN LEFT FOR 0.02 MILES TO A WYE, STAY LEFT FOR 0.52 MILES TO A WYE AND PARK. WALK ABOUT N67°W 380 FEET TO THE CORNER. CORNER IS BAD FOR PREMARKING AND GPS CONTROL.

**MONUMENTS AND ACCESSORIES FOUND (CONDITION AND SOURCE):**

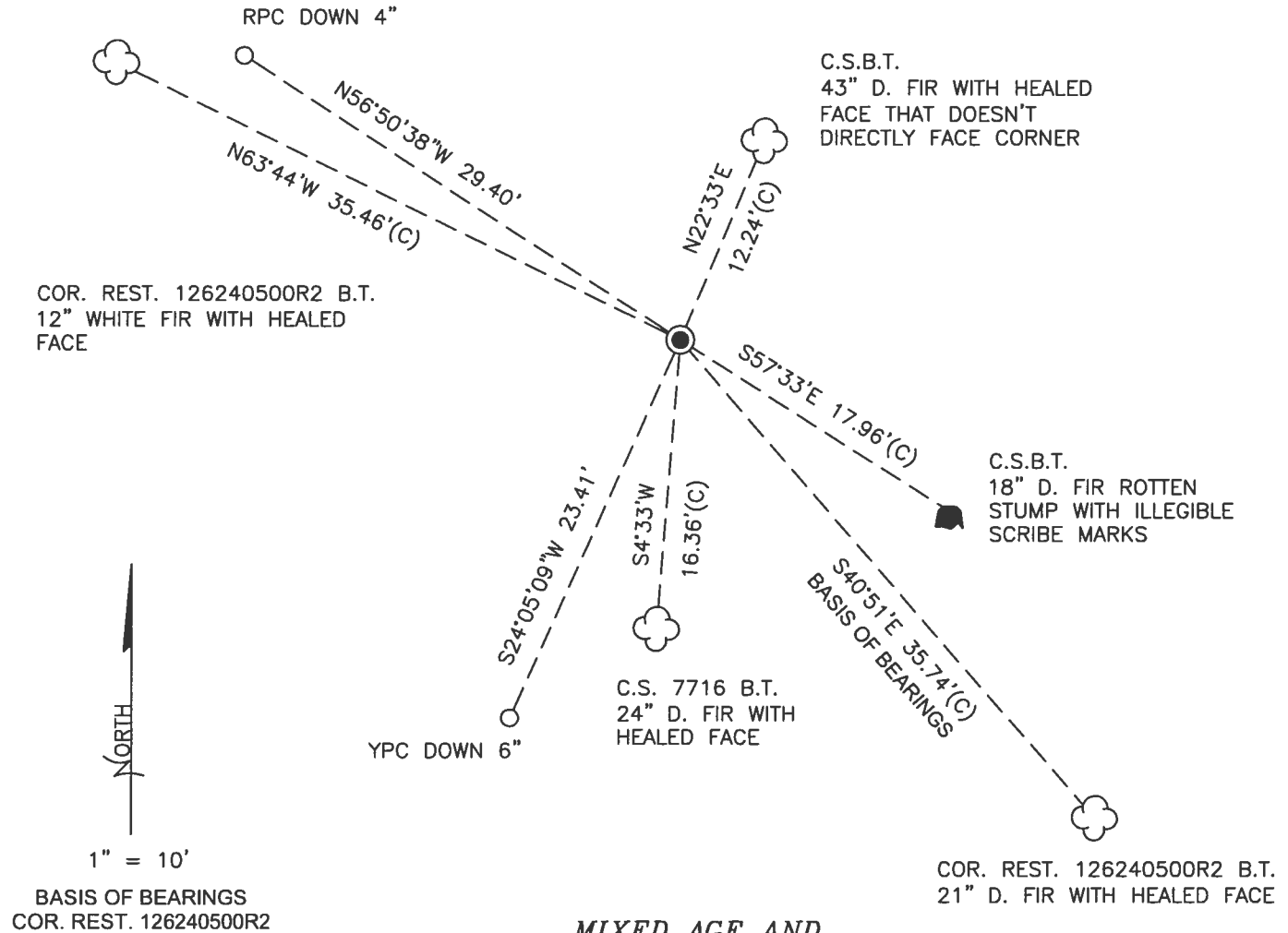
1. FOUND 3-1/8" ALUMINUM CAP MARKED AS SHOWN ON PAGE 2 OF 2 ON 2" ALUMINUM PIPE, FIRMLY SET AND UNDISTURBED, UP 1" ABOVE GROUND SURFACE, FOR THE CORNER.  
(SET POST AS PER RECORD [01]).  
(6" X 12" X 14" STONE MARKED "CS" AS PER RECORD [02]).  
(STAKE – STONE 6" X 12" X 14" MARKED "CS" AS PER RECORD [03]).  
(STONE 6" X 12" X 14" "CS" "+" AS PER RECORD [05]).  
(STONE IN PLACE AS PER RECORD [06]).  
(FOUND CS STONE 6" X 12" X 14" AS PER RECORD [07]).  
(FOUND 12" X 12" X 6" STONE WITH P-K NAIL AND MARKED "CS" AS PER RECORD [08]).  
(10" X 12" X ? STONE WITH NAIL IN IT AS PER RECORD [09]).  
(FOUND 10" X 12" X ? STONE WITH NAIL IN TOP AS PER RECORDS [10] AND [11]).  
(FOUND 6" X 10" X 13" STONE MARKED "CS" WITH NAIL IN TOP. REPLACED FOUND STONE WITH 2" INSIDE DIAMETER X 30" LONG ALUMINUM PIPE WITH 3-1/4" ALUMINUM CAP (WITH MAGNET UNDER CAP), STAMPED "BENTON COUNTY SURVEYOR T12S R6W S8 1/4 S17 2004 LS60065 DO NOT DISTURB", 2" ABOVE GROUND LEVEL. BURIED FOUND STONE ALONGSIDE CAP AS PER RECORD [12]).
2. FOUND D. FIR 21" DIA WITH HEALED FACE BEARS S40°51'E, 35.74 FEET TO CENTER. **HELD FOR BASIS OF BEARINGS FOR THIS RESTORATION.** SET ALUMINUM NAIL AND PLASTIC WASHER IN SOUTHWESTERLY BASE FOR DISTANCE MEASUREMENT.  
(SET D. FIR 17" DIA BEARS S40°51'E, 34.88 FEET TO AN ALUMINUM NAIL AND PLASTIC WASHER ATTACHED TO THE FACE BELOW THE "BT" (35.6 FEET TO SIDE CENTER), MARKED "1/4 S17 BT" AS PER RECORD [12]).
3. FOUND D. FIR 24" DIA WITH HEALED FACE BEARS S4°33'W, 16.36 FEET TO CENTER. SET ALUMINUM NAIL AND PLASTIC WASHER IN WESTERLY BASE FOR DISTANCE MEASUREMENT.  
(MARKED A 9" DOUG. FIR BEARS S8°W, 16.4 FEET AS PER RECORD [08]).  
(D. FIR 11" DIA BEARS S8°W, 16.4 FEET, HEALED FACE AS PER RECORD [09]).  
(FIR 16" DIA BEARS S8°W, 16.4 FEET AS PER RECORDS [10] AND [11]).  
(FOUND D. FIR 18" DIA WITH HEALED FACE BEARS S5°30'W (TO CENTER OF TREE), 16.20 FEET TO NAIL AND PLASTIC WASHER SET IN SIDE CENTER AS PER RECORD [12]).
4. FOUND WHITE FIR 12" DIA WITH HEALED FACE BEARS N63°44'W, 35.46 FEET TO CENTER. SET ALUMINUM NAIL AND PLASTIC WASHER IN NORTHEASTERLY BASE FOR DISTANCE MEASUREMENT.  
(SET W. FIR 8" DIA BEARS N64°30'W, 35.10 FEET TO AN ALUMINUM NAIL AND PLASTIC WASHER ATTACHED TO THE FACE BELOW THE "BT" (35.5 FEET TO SIDE CENTER), MARKED "1/4 S8 BT" AS PER RECORD [12]).
5. FOUND D. FIR 43" DIA BEARS N22°33'E, 12.24 FEET TO CENTER, WITH HEALED FACE THAT DOESN'T DIRECTLY FACE THE CORNER POSITION. SET ALUMINUM NAIL AND PLASTIC WASHER OVER FOUND NAIL IN NORTHWESTERLY BASE FOR DISTANCE MEASUREMENT.  
(FIR 16" DIA BEARS N23°E, 0.185 CHAINS [12.21 FEET] AS PER RECORDS [02], [03] AND [05]).  
(D. FIR 16" DIA BEARS N23°E, 0.185 CHAINS [12.21 FEET] AS PER RECORD [07]).  
(34" DOUG. FIR WITH HEALED DOUBLE BLAZE BEARS N21°W, 12.0 FEET AS PER RECORD [08]).  
(FOUND A D. FIR 38" DIA BEARS N22°E, 12.0 FEET, HEALED FACES AS PER RECORD [09]).  
(FIR 40" DIA BEARS N23°E, 0.185 CHAINS [12.21 FEET], HEALED FACE AS PER RECORDS [10] AND [11]).  
(FOUND D. FIR 40" DIA WITH HEALED FACE BEARS N22°27'E (TO CENTER OF TREE), 12.21 FEET TO NAIL AND PLASTIC WASHER SET IN SIDE CENTER AS PER RECORD [12]).
6. FOUND ROTTEN D. FIR STUMP 18" DIA WITH ILLEGIBLE SCRIBE MARKS BEARS S57°33'E, 17.96 FEET TO CENTER.  
(FIR 10" DIA BEARS S55°E, 0.270 CHAINS [17.82 FEET] AS PER RECORDS [02], [03] AND [05]).  
(D. FIR 10" DIA BEARS S55°E, 0.27 CHAINS [17.82 FEET] AS PER RECORD [07]).  
(20" DOUG. FIR STUMP WITH HEALED BLAZE BEARS S59°E, 18.0 FEET AS PER RECORD [08]).  
(FOUND FIR STUMP 20" DIA BEARS S55°E, 0.270 CHAINS [17.82 FEET], HEALED FACE AS PER RECORDS [10] AND [11]).  
(FOUND D. FIR STUMP 24" DIA WITH HEALED FACE BEARS S57°50'E, 17.85 FEET TO SPIKE AND BRASS WASHER SET IN TOP CENTER OF STUMP AS PER RECORD [12]).

**MONUMENT SET (PROCEDURES AND DESCRIPTION):**

FOUND 3-1/8" ALUMINUM CAP MARKED AS SHOWN ON PAGE 2 OF 2 ON 2" ALUMINUM PIPE, FIRMLY SET AND UNDISTURBED, UP 1" ABOVE GROUND SURFACE, FOR THE CORNER. THE ALUMINUM PIPE AND CAP WERE SET IN 2004 BY BRIAN M. PETERSON, P.L.S., IN PLACE OF A STONE SET IN 1930 BY W. W. LARSEN, D.C.S., FROM TWO ORIGINAL GENERAL LAND OFFICE (GLO) BEARING TREES. THE ALUMINUM PIPE AND CAP ARE ACCEPTED AS THE PERPETUATION OF THE ORIGINAL CORNER POSITION.  
SET TWO NEW IRON ROD ACCESSORIES AS SHOWN ON PAGE 2 OF 2. FOUND WHITE FIBERGLASS POST 8" EAST OF ALUMINUM CAP.  
FOUND ORANGE FIBERGLASS "SURVEY MARKER" POST 10" NORTH OF ALUMINUM CAP.

CLEARCUT

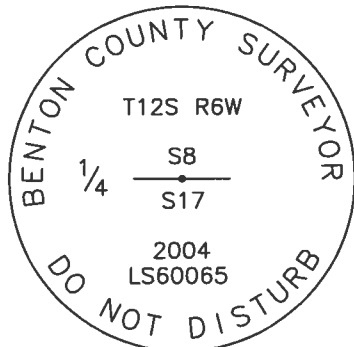
±15 YEAR OLD D. FIR



MIXED AGE AND MIXED TYPE TREES

MONUMENT DETAIL

LEGEND



3-1/8" ALUMINUM CAP

- SET 5/8" X 30" REBAR WITH PLASTIC CAP
- YPC YELLOW PLASTIC CAP MARKED "BENTON COUNTY SURVEYOR"
- RPC RED PLASTIC CAP MARKED "BENTON COUNTY SURVEYOR"
- (C) MEASUREMENT TO CENTER
- GOVERNMENT MONUMENT FOUND AS SHOWN
- C.S. COUNTY SURVEY
- C.S.B.T. COUNTY SURVEYOR'S BEARING TREE
- COR.REST. CORNER RESTORATION
- B.T. BEARING TREE
- BEARING TREE STUMP AS NOTED
- ☁ BEARING TREE AS NOTED

NEW ACCESSORIES:

1. SET REBAR (SEE LEGEND) N56°50'38"W, 29.40 FEET AND 4 INCHES BELOW GROUND LEVEL.
2. SET REBAR (SEE LEGEND) S24°05'09"W, 23.41 FEET AND 6 INCHES BELOW GROUND LEVEL.

NOTES:

COMPASS DECLINATION IS 15' EAST. ALL MEASURED DISTANCES AND BEARINGS ARE TO THE CENTER OF THE OBJECT, UNLESS OTHERWISE NOTED. ALL BEARING TREES ARE PAINTED AND HAVE A B.T. TAG ATTACHED, FACING THE CORNER UNLESS OTHERWISE NOTED. ALL BEARING TREES HAVE A PLASTIC WASHER (STAMPED "SURVEY MARKER DO NOT REMOVE") ATTACHED BY AN ALUMINUM NAIL TO THE SIDE CENTER OF THE TREE FOR DISTANCE MEASUREMENT, UNLESS OTHERWISE NOTED.

THIS RESTORATION WAS PERFORMED AT THE DIRECTION AND APPROVAL OF THE BENTON COUNTY SURVEYOR *JL*

FIRM/AGENCY: BENTON COUNTY SURVEYOR'S OFFICE  
 ADDRESS: 360 S.W. AVERY AVE., CORVALLIS, OR 97333; PH. 541-766-6821  
 PRESENT: DAVID L. MALONE, P.L.S., AND IAN MCGUIRE, P.L.S.  
 EQUIPMENT: NIKON NIVO3.C WITH SURVEY PRO ONBOARD.

REGISTERED PROFESSIONAL LAND SURVEYOR

*1/12/23 David L. Malone*

OREGON  
 JANUARY 12, 1999  
 DAVID L. MALONE  
 51523

RENEWAL DATE: 12/31/24

126240500  
 58  
 7725 Row 14 S17

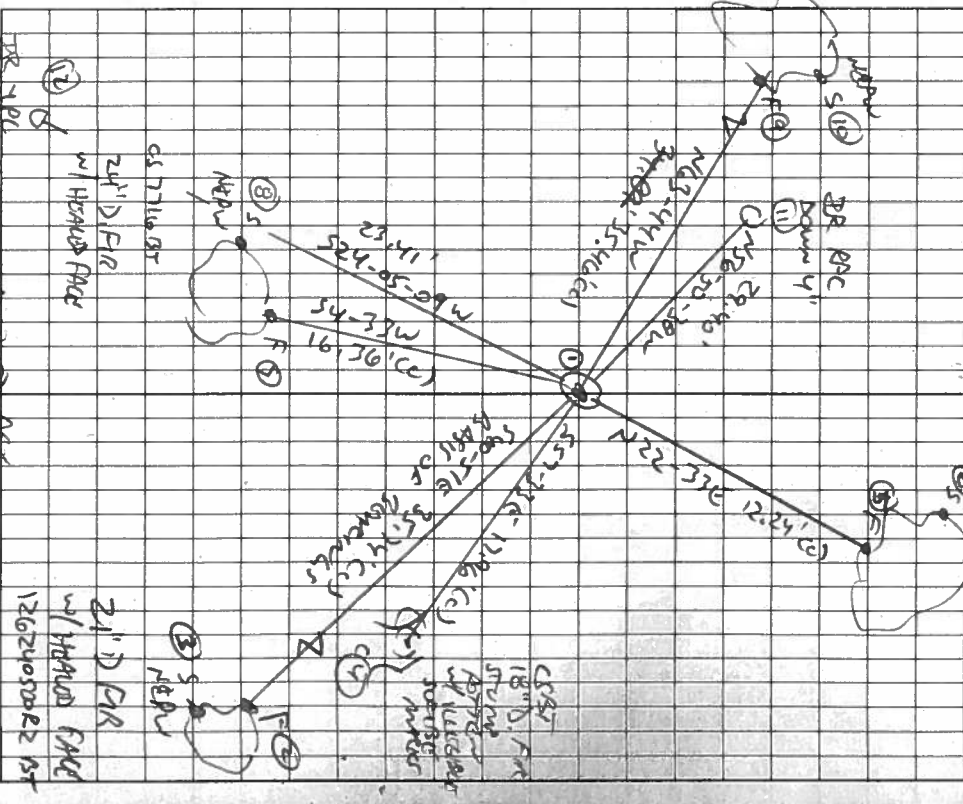
FD 3-1/8" Aluminum Cap on 2" Aluminum AP  
 Furnly set & undisturbed, w/ 1" Arrow  
 Ground SURFACE, FD 2.5'S. FOR COR. EST.  
 1262405002 AND HAND FOR PARTS OF SAMPLES.  
 FD NE GIST & SE GIST STUMPS, FD SE GIST  
 FOR CS 7716. FD TWO POSSIBLE GLO ONE WRECKTS  
 AT GLO ROOM NONPENT AND DISTANCE BY  
 COMPASS AND CHAIN. FD WITHIN 150METERS  
 POST E' PART AND DEANGUS F. SONGWASS  
 "SWERT MARENE" PART 10" NORTH. SET 2  
 NEW IRON ROD ACCIDENTAL.



11/01/22  
 D. MARENE  
 I. McGUIRE

7:15 PM  
 00 S. FIRE

NIKON MICRO  
 SPECTROPHOTOMETER  
 4.05METER  
 12" WHITE AIR  
 W/ HYDROD FACE  
 21" D. FIR  
 W/ HYDROD FACE  
 21" D. FIR  
 W/ HYDROD FACE  
 1262405002 FT  
 43" D. FIR  
 W/ HYDROD FACE  
 NOT AFFEY  
 CARBON  
 1262405002 FT  
 21" D. FIR  
 W/ HYDROD FACE  
 1262405002 FT



DOWN 6"  
 W/ HYDROD FACE  
 21" D. FIR  
 W/ HYDROD FACE  
 21" D. FIR  
 W/ HYDROD FACE  
 1262405002 FT  
 21" D. FIR  
 W/ HYDROD FACE  
 1262405002 FT

Red in the Rain

DATE 03/26/2004

TOWNSHIP 12 SOUTH, RANGE 06 WEST, WILLAMETTE MERIDIAN; SECTION 08 CORNER SOUTH 1/4  
DONATION LAND CLAIM N/A CORNER N/A**COMMON CORNER(S):**

NORTH 1/4 SECTION 17

**RECORDS (INFORMATION IN *BOLD ITALICS* IS COUNTY STAFFS' INTERPRETATION OF THE RECORD)**

BASED ON EXTENSIVE RESEARCH AND RECOVERY OF EVIDENCE, THIS OFFICE HAS DETERMINED THAT MOST GENERAL LAND OFFICE SURVEYORS MEASURED TO THE FACE OF BEARING TREES.

- [01] GENERAL LAND OFFICE (GLO) NOTES BY H. GORDON, D.S. AND J. PRESTON, D.S., DATED AUGUST 17, 1854. SET A POST. MARKED A 8" W. OAK *S74°W, 73 LKS. (48.18 FT.)* AND A 8" W. OAK *N83 1/2°W, 31 LKS. (20.46 FT.)*.
- [02] COUNTY SURVEY NO 1214 (OLD NO. 340) FIELD NOTES (FIELD BOOK 65, PAGE 7) BY W. W. LARSEN, D.C.S., NO DATE GIVEN. SET A 6"x 12"x 14" STONE MARKED "CS". FOUND A STANDING 8" OAK (GLO BT) *S74°W, 0.73 CHS. (48.18 FT.)* AND A STANDING 8" OAK (GLO BT) *N83 1/2°W, 0.31 CHS. (20.46 FT.)*. MARKED A 16" FIR *N23°E, 0.185 CHS. (12.21 FT.)* AND A 10" FIR *S55°E, 0.270 CHS. (17.82 FT.)*.
- [03] CORNER RESTORATION BOOK NO. 1, PAGE 190 BY W. W. LARSEN, D.C.S., DATED 1930. SET A STAKE - STONE 6"x 12"x 14" MARKED "CS". FOUND A STANDING 8" OAK (GLO BT) *S74°W, 0.73 CHS. (48.18 FT.)* AND A STANDING 8" OAK (GLO BT) *N83 1/2°W, 0.31 CHS. (20.46 FT.)*. MARKED A 16" FIR *N23°E, 0.185 CHS. (12.210 FT.)* AND A 10" FIR *S55°E, 0.270 CHS. (17.820 FT.)*.
- [04] CORNER RESTORATION NO. 1398. TRANSCRIBED FROM RECORD [03] AND MAY CONTAIN ERRORS AND/OR OMISSIONS.
- [05] BENTON COUNTY MAP NO. 12-6-00024 BY BENTON COUNTY, NO DATE GIVEN. STONE 6"x12"x14" "CS" "+". STANDING 8" OAK (GLO BT) *S74°W, 0.73 CHS. (48.18 FT.)*. STANDING 8" OAK (GLO BT) *N83 1/2°W, 0.31 CHS. (20.46 FT.)*. A 16" FIR (CS BT) *N23°E, 0.185 CHS. (12.21 FT.)*. A 10" FIR (CS BT) *S55°E, 0.270 CHS. (17.82 FT.)*.
- [06] COUNTY SURVEY NO. 1969 BY OTTO MEYER, P.E., DATED NOVEMBER 24, 1947. STONE IN PLACE.
- [07] COUNTY SURVEY NO. 5949 BY ARNOLD BRUBAKER, P.L.S., DATED SEPTEMBER 22, 1975. FOUND 6"x 12"x 14" CS STONE. FOUND A 16" D. FIR (CS BT) *N23°E, 0.185 CHS. (12.21 FT.)*, A 10" D. FIR (CS BT) *S55°E, 0.270 CHS. (17.82 FT.)*, A 8" OAK (GLO BT) *S74°W, 0.73 CHS. (48.18 FT.)*, AND A 8" OAK (GLO BT) *N83 1/2°W, 0.31 CHS. (20.46 FT.)*.
- [08] COUNTY SURVEY NO. 7716 BY MARTIN STEWART, P.L.S., DATED DECEMBER 30, 1984. FOUND A 12"x 12"x 6" STONE WITH P.K. NAIL AND MARKED "CS". FOUND A 34" DOUG. FIR WITH HEALED DOUBLE BLAZE (CS BT) *N21°W, 12.0 FT.* AND A 20" DOUG. FIR STUMP WITH HEALED BLAZE (CS BT) *S59°E, 18.0 FT.* MARKED A 9" DOUG. FIR *S08°W, 16.4 FT.*
- [09] COUNTY SURVEY NO. 8416 BY TED LANGTON, P.L.S., DATED MAY 7, 1990. FOUND A 10"x 12"x ?" STONE WITH A NAIL IN IT. FOUND A 38" D. FIR WITH HEALED FACES (CS BT) *N22°E, 12.0 FT.* AND A 11" D. FIR WITH A HEALED FACE *S8°W, 16.4 FT.*
- [10] COUNTY SURVEY NO. 9890 BY JIM PETERSON, P.L.S., DATED MAY 18, 2000. FOUND A 10"x 12"x ?" STONE WITH A NAIL IN TOP. FOUND A ROTTED OAK DOWN (GLO BT) *S74°W, 0.73 CHS. (48.18 FT.)*, A ROTTED OAK UPROOT (GLO BT) *N83 1/2°W 0.73 CHS. (48.18 FT.)*, A 40" FIR WITH A HEALED FACE (CS BT) *N23°E, 0.185 CHS (12.21 FT.)*, A 20" FIR STUMP WITH HEALED FACE (CS BT) *S55°E, 0.270 CHS. (17.82 FT.)* AND A 16" FIR WITH A HEALED FACE *S08°W, 16.4 FT.*
- [11] COUNTY SURVEY NO. 9641 BY JIM PETERSON, P.L.S., DATED APRIL 26, 2001. FOUND A 10"x 12" x ?" STONE WITH A NAIL IN TOP. FOUND A ROTTED OAK DOWN (GLO BT) *S74°W, 0.73 CHS. (48.18 FT.)*, A ROTTED OAK UPROOT (GLO BT) *N83 1/2°W, 0.73 CHS. (48.18 FT.)*, A 40" FIR WITH A HEALED FACE (CS BT) *N23°E, 0.185 CHS (12.21 FT.)*, A 20" FIR STUMP WITH HEALED FACE (CS BT) *S55°E, 0.270 CHS. (17.82 FT.)* AND A 16" FIR WITH A HEALED FACE *S08°W, 16.4 FT.*

**NOTES:**

THIS IS A MICROSOFT WORD 2000 DOCUMENT NAMED "26240500" CREATED FROM A BOILER PLATE DOCUMENT NAMED "HISTORY", WHICH HAS A STYLESHEET NAMED "CORNER" ATTACHED TO IT.

**FIRM/AGENCY:** BENTON COUNTY SURVEYOR'S OFFICE**ADDRESS:** 360 S.W. AVERY AVE. CORVALLIS OR 97333; PH. 766-6821**RESEARCH BY:** BERNARD S. ALTENBACH, ENGINEER/SURVEY TECH.**DATA ENTRY BY:** BSA

**BENTON COUNTY CORNER RESTORATION FORM, PAGE 1 OF 2  
SEE CORNER HISTORY FORM FOR RECORDS, ETC.**

CORNER RESTORATION FIELD BOOK NO.      PAGE      DATE 5-25-2004  
TOWNSHIP 12 SOUTH, RANGE 6 WEST, W.M. SECTION 8 CORNER S1/4  
DONATION LAND CLAIM                                      CORNER       
CONDITION REPORT      REFERENCED OUT      RENEWED XX SURVEYED IN     

**LOCATION AND COMMENTS:**

FROM THE INTERSECTION OF HIGHWAY 34 AND OLD PEAK ROAD DRIVE WESTERLY ON OLD PEAK ROAD FOR 3.94 MILES TO A GRAVEL SPUR ROAD ON THE LEFT. FOLLOW SPUR ROAD 200' TO STARKER FORESTS GATE. FROM GATE CONTINUE ON GRAVEL ROAD FOR 0.22 MILES TO A DIRT ROAD ON LEFT. FOLLOW DIRT ROAD FOR 950' TO LOCATION TAG ON 20" FIR ON NORTH EDGE OF ROAD. CORNER BEARS APPROXIMATELY N70°E, 325'. CORNER LIES ON NORTHEAST SLOPE AT SOUTHWEST CORNER OF CLEARCUT. CORNER IS POOR FOR PREMARKING AND GPS CONTROL.

**MONUMENTS AND ACCESSORIES FOUND (CONDITION AND SOURCE):**

- FOUND: 6" X 10" X 13" STONE MARKED "CS" WITH NAIL IN TOP FOR THE CORNER.  
(SET 6" X 12" X 14" STONE MARKED "CS" PER RECORDS [02] - [05])  
(FOUND STONE IN PLACE PER RECORD [06])  
(FOUND 6" X 12" X 14" STONE PER RECORD [07])  
(FOUND 12" X 12" X 6" STONE MARKED "CS" WITH PK NAIL IN IT PER RECORD [08])  
(FOUND 10" X 12" X ?" STONE WITH NAIL IN TOP PER RECORDS [09] - [11])
- FOUND: 12" ROTTED OAK UPROOT, WITH NO MARKS VISIBLE, N80°38'W, 18.0' TO BASE OF UPROOT.  
THERE IS NO VISIBLE UPROOT HOLE TO DETERMINE ORIGINAL POSITION.  
(8" OAK, N83 1/2°W, 31 LKS. PER RECORDS [01] - [05], AND [07])  
(ROTTED OAK UPROOT, NO MARKS VISIBLE, N83 1/2°W, 31 LKS. PER RECORDS [10] AND [11])
- FOUND: 12" OAK UPROOT, WITH NO MARKS VISIBLE, S63°10'W, 51.5' TO BASE OF UPROOT.  
THERE IS NO VISIBLE UPROOT HOLE TO DETERMINE ORIGINAL POSITION.  
(8" OAK, S74°W, 73 LKS. PER RECORDS [01] - [05], AND [07])  
(ROTTED OAK - DOWN, ROTTED FACE, S74°W, 73 LKS. PER RECORDS [10] AND [11])
- FOUND: 24" D. FIR STUMP, WITH HEALED FACE, S57°50'E, 17.85' TO SPIKE AND BRASS WASHER SET IN TOP CENTER OF STUMP.  
(10" FIR, S55°E, 0.270 CHS. PER RECORDS [02] - [05], AND [07])  
(20" FIR STUMP, HEALED BLAZE, S59°E, 18.0' PER RECORD [08])  
(20" FIR STUMP, HEALED FACE, S55°E, 0.270 CHS. PER RECORDS [10] AND [11])
- FOUND: 40" D. FIR, WITH HEALED FACE, N22°27'E (TO CENTER OF TREE), 12.21' TO NAIL AND PLASTIC WASHER SET IN SIDE CENTER.  
(16" FIR, N23°E, 0.185 CHS. PER RECORDS [02] - [05], AND [07])  
(34" FIR, HEALED DOUBLE BLAZE, N21°W, 12.0' PER RECORD [08])  
(38" FIR, HEALED FACES, N22°E, 12.0' PER RECORD [09])  
(40" FIR, HEALED FACE, N23°E, 0.185 CHS. PER RECORDS [10] AND [11])
- FOUND: 18" D. FIR, WITH HEALED FACE, S05°30'W (TO CENTER OF TREE), 16.20' TO NAIL AND PLASTIC WASHER SET IN SIDE CENTER.  
(9" FIR, S08°W, 16.4' PER RECORD [08])  
(11" FIR, HEALED FACE, S08°W, 16.4' PER RECORD [09])  
(16" FIR, HEALED FACE, S08°W, 16.4' PER RECORDS [10] AND [11])

**MONUMENT SET (PROCEDURES AND DESCRIPTION):**

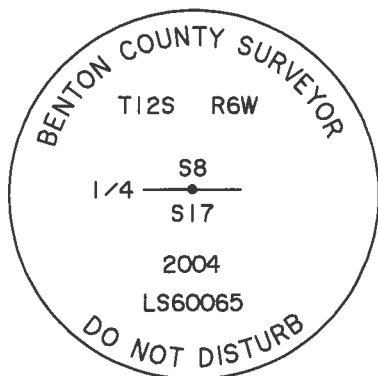
REFERENCED AND REPLACED FOUND STONE WITH 2" INSIDE DIAMETER X 30" LONG ALUMINUM PIPE WITH 3 1/4" ALUMINUM CAP (WITH MAGNET UNDER CAP), STAMPED AS SHOWN, 2" ABOVE GROUND LEVEL. BURIED FOUND STONE ALONGSIDE CAP.



**BENTON COUNTY CORNER RESTORATION FORM, PAGE 2 OF 2  
SEE CORNER HISTORY FORM FOR RECORDS, ETC.**

CORNER RESTORATION FIELD BOOK NO. \_\_\_\_\_ PAGE \_\_\_\_\_ DATE 5-25-2004  
 TOWNSHIP 12 SOUTH, RANGE 6 WEST, W.M. SECTION 8 CORNER S1/4  
 DONATION LAND CLAIM \_\_\_\_\_ CORNER \_\_\_\_\_  
 CONDITION REPORT \_\_\_\_\_ REFERENCED OUT \_\_\_\_\_ RENEWED XX SURVEYED IN \_\_\_\_\_

MONUMENT DETAIL

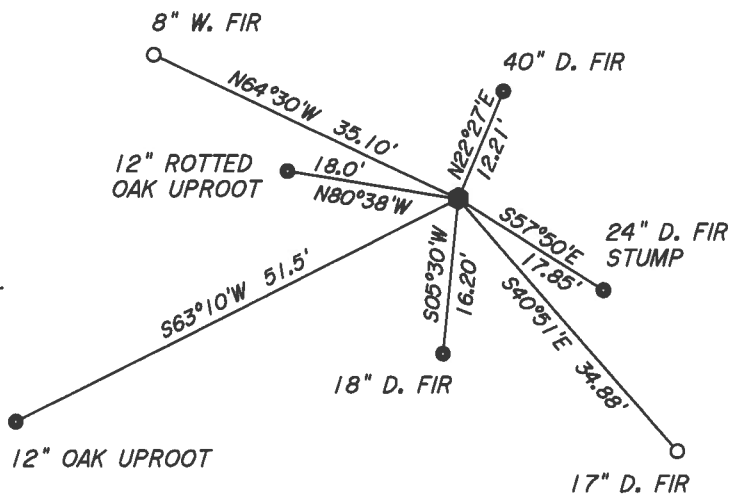


3 1/4" ALUM. CAP



NOT TO SCALE

SKETCH



**NEW ACCESSORIES:**

- SET: 8" W. FIR, N64°30'W, 35.10' (35.5' TO SIDE CENTER) MARKED: "1/4 S8 BT"
- SET: 17" D. FIR, S40°51'E, 34.88' (35.6' TO SIDE CENTER) MARKED: "1/4 S17 BT"
- SET: ORANGE FIBERGLASS "SURVEY MARKER" POST 1' NORTH OF CAP.

**NOTES:**

BASIS OF BEARINGS IS C.S. 9890. ALL MEASURED BEARINGS AND DISTANCES ARE TO THE CENTER OF THE OBJECT, UNLESS OTHERWISE NOTED. ALL BEARING TREES ARE PAINTED AND HAVE A BT TAG ATTACHED. ALL NEW BEARING TREES HAVE A PLASTIC WASHER (STAMPED "BENTON COUNTY SURVEYOR CORNER RESTORATION") ATTACHED (BY ALUMINUM NAIL) TO THE FACE, BELOW THE "BT" FOR DISTANCE AND ANGLE MEASUREMENT UNLESS OTHERWISE NOTED.  
 THIS RESTORATION WAS DONE UNDER CONTRACT WITH BENTON COUNTY.

FIRM/AGENCY: PETERSON & ASSOCIATES  
ADDRESS: 8155 NW MITCHEL DR - CORVALLIS, OR  
SURVEYOR: BRIAN M. PETERSON PH. 757-1794  
SURVEY CREW: JIM PETERSON

REGISTERED  
 PROFESSIONAL  
 LAND SURVEYOR

*[Signature]*  
 OREGON  
 JULY 15, 2003  
 BRIAN M. PETERSON  
 60065  
 RENEWAL: 12-31-04

CORNICK RESTORATION BOOK NO. 1

1929  
W. W. L.  
Witness  
Hughes  
Sgd. Mohu

N.E. corner of Jacob Martin Cl. 66, T. 125 R. 5W  
Found set stone 8"x8"x14" from which 4x  
Oak 36" in diameter bears N57°E 1.32 chs  
Oak 10" " " " N 85°E .89 "  
" 30" " " " S 54°E .25 "  
Ash 8" " " " North 1.06

N.W. corner of Jacob Martin Cl. 66 T. 125 R. 5W  
Set Oak stake 1/2" dia from which a Crab  
Crab apple 8" in diameter bears S 51°W 1.36 chs  
Anchor Post " " " S 45°W .04

S.W. corner of Bushrod Wilson Cl. 64, T. 125 R. 5W  
Set 1" rod east of fence post  
See recorded plat.

1930  
W. W. L.  
Rev. Clamms

1/4 cor on N. of Sec. 17, T. 125 R. 6W  
Stake - Stone 6"x12"x14" C.S.  
Fir 10" in diameter bears S 55°E .27 chs  
" 16" " " " N 23°E .185 "  
Oak 8" " " " " N 83°W .31 " S.H.  
" 8" " " " " S 77°W .75 " "

N.W. cor. Sec 17, T. 125 R. 6W  
Set fir limb <sup>3/4" pipe</sup> and tile from which a  
Fir 60" in diameter bears S 18°E 1.36 chs  
" 8" " " " " N 26°W .31 " S.H.  
" 16" " " " " S 85°E .26 " S.H.  
" 8" " " " " S 57°W 1.07 " "

1/4 corner on W line of Sec. 17, T. 125 R. 5W  
Set stake + iron from which 4  
Fir 24" in dia bears S 23°W 1.46 chs  
Dogwood 5" " " " S 14°E 1.45 chs  
Fir 65" " " " " N 35°W 1.31 chs S.H.

Mar 1930  
W. W. L.  
C. C. Heasley Wit.

S.E. cor. Sec. 30, T. 11 S. R. 5 W  
Set 1" pipe 10" under surface from which  
S.E. corner of Barn bears N 53°W  
" " " " " S 61°W 1.593 chs  
N.E. cor house " S 81°W  
Oak 14" " " N 19°W 8.63 S.H.

Oct 1930  
W. W. L.  
Witness  
Saml Starr  
By Lee

N.E. corner Polly Bellnap Cl. 37 T. 145 R. 5W  
Set Oak Stake, Replaced with 2" Cast Iron pipe May 26, 1925  
Oak 24" in diameter bears N 85°E .38 chs S.H.  
" 10" " " " " N 6°W .13 chs  
" 10" " " " " N 28°E .87 chs  
" 14" " " " " S 11°W .075 "

May 5, 1931  
Emile Larkin  
Roy S. Lee  
R. D. Ewing  
W.C. Galloway C.  
Witnesses.  
C.S. #247  
by W.C. Galloway  
Apr. 27, 1928  
Witness Wm Wiener

C.S. #247  
Sept. 1930  
By W.C. G  
Witness Gordon B.  
C.S. #247  
By W.C. G.  
Witnesses Emile Lar  
Morte Gray  
Ira Huskey  
June 1931

C.S. #103  
Witness  
Clyde Starr  
Clara Smith  
Oct. 27, 1925

C.S. #134  
Dec. 16, 1930  
J.C. Smith  
Roy S. Lee

12-6 8

$\frac{1}{4}$  corner on N. of Section 17, Twp. 12 S., R. 6 W.

Reestablishment by W. C. Galloway

1929

1654  
1398

Stake and stone 6" x 12" x 14" C. S.

Fir 10" in diam bears S 55° E

Fir 16" in diam bears N 23° E

Oak 8" in diam bears N 83 $\frac{1}{2}$ ° W

Oak 8" in diam bears S 74° W

.27 chains

.185 chains

.31 chains

.73 chains

Witness Syd Klohn