

126340200

DATE 12/11/2015TOWNSHIP 12 SOUTH, RANGE 6 WEST, WILLAMETTE MERIDIAN; SECTION 28 CORNER SOUTH 1/4
DONATION LAND CLAIM N/A CORNER N/A**COMMON CORNER(S):**

NORTH 1/4 CORNER SECTION 33

RECORDS (INFORMATION IN BOLD ITALICS IS COUNTY STAFFS' INTERPRETATION OF THE RECORD)

BASED ON EXTENSIVE RESEARCH AND RECOVERY OF EVIDENCE, THIS OFFICE HAS DETERMINED THAT MOST GENERAL LAND OFFICE SURVEYORS IN BENTON COUNTY MEASURED TO THE FACE OF BEARING TREES.

- [01] GENERAL LAND OFFICE (GLO) NOTES BY HARVEY GORDON, D.S., AND JOSIAH W. PRESTON, D.S., DATED AUGUST 11, 1854. SET POST FROM WHICH A W. OAK 24" DIA BEARS **S46-1/4°E, 336 LINKS (221.76 FEET)**; AN ALDER 4" DIA BEARS **N17°W, 561 LINKS (370.26 FEET)**.
- [02] BENTON COUNTY SURVEY NO. 1751 (OLD NO. 184) FIELD NOTES (FIELD BOOK 102, PAGE 17) BY W. C. GALLOWAY, C.S., DATED JANUARY 14, 1946. SET **1-1/2" X 20" CAST IRON WINDOW WEIGHT FROM OAK STUMP 30" DIA (GLO BT) BEARS S46-1/2°E, 3.36 CHAINS (221.76 FEET)**; ALDER **N17°W, 5.61 CHAINS (370.26 FEET)** GONE. MARKED OAK 18" DIA BEARS **N46°30'E, 2.744 CHAINS AT SLOPE 5°35' (180.25 FEET)**, OAK HAS BEEN GIRDLED; OAK 11" DIA BEARS **S54°45'E, 3.544 CHAINS AT SLOPE 1°35' (233.84 FEET)**.
- [03] BENTON COUNTY CORNER RESTORATION BOOK NO. 1, PAGE 240, BY W. C. GALLOWAY, C.S., DATED JANUARY 16, 1946. SET A **1-1/2" CAST IRON, 20" LONG, WINDOW WEIGHT. FROM OAK STUMP 30" DIA (GLO BT) BEARS S46-1/2°E, 3.36 CHAINS (221.76 FEET)**; NORTHWEST TREE GONE. MARKED OAK 18" DIA (CSBT) BEARS **N46-1/2°E, 2.731 CHAINS (180.25 FEET)**; MARKED OAK 11" DIA (CSBT) BEARS **S54°45'E, 3.543 CHAINS (233.84 FEET)**.
- [04] BENTON COUNTY CORNER RESTORATION NO. 1442. **TRANSCRIBED FROM RECORD [03] AND MAY CONTAIN ERRORS AND/OR OMISSIONS.**
- [05] BENTON COUNTY MAP NO. 12-6-00032 BY UNKNOWN DRAFTSMAN, NO DATE GIVEN. **1-1/2" X 20" WINDOW WEIGHT.**
- [06] BENTON COUNTY SURVEY NO. 4688 BY JOHN F. GANNON, P.L.S., DATED NOVEMBER 24, 1968. **1-1/2" X 20" WINDOW WEIGHT.**
- [07] BENTON COUNTY SURVEY NO. 5318 BY FRED I. LEMKE, P.L.S., DATED JULY 27, 1972. **1-1/2" X 20" WINDOW WEIGHT 3 FEET SOUTH OF FENCE. BEARING TREES AS REESTABLISHED BY GALLOWAY.**
- [08] BENTON COUNTY SURVEY NO. 5894 BY BERT W. UDELL, P.E., DATED MAY 29, 1975. **FOUND CAST IRON WINDOW WEIGHT.**
- [09] BENTON COUNTY SURVEY NO. 6630 BY FRED I. LEMKE, P.L.S., DATED APRIL 24, 1978. **1-1/2" X 20" WINDOW WEIGHT.**
- [10] BENTON COUNTY CORNER RESTORATION NO. 4084 BY JIM S. PETERSON, P.L.S., DATED FEBRUARY 10, 1992. **FOUND 1-1/2" X 20" CAST IRON WINDOW WEIGHT AT CORNER POSITION, 2 FEET SOUTH OF AN EAST-WEST FENCELINE. OAK 27" DIA (CSBT) BEARS N46°E, 179.60 FEET, HEALED FACE. SET PK NAIL WITH BRASS WASHER STAMPED "BENTON COUNTY SURVEYOR" (BCBW) IN SIDE CENTER OF BASE OF TREE FOR DISTANCE MEASUREMENT. OAK 19" DIA (CSBT) BEARS S54-3/4°E, 233.84 FEET, HEALED FACE. SET PK NAIL WITH BCBW IN SIDE CENTER OF BASE OF TREE FOR DISTANCE MEASUREMENT. SET 2" INSIDE DIAMETER X 30" GALVANIZED IRON PIPE, WITH 2-1/2" BRASS CAP RIVETTED TO PIPE, IN THE SAME POSITION AS THE FOUND WINDOW WEIGHT. BURIED WINDOW WEIGHT ALONGSIDE CAP. BRASS CAP IS STAMPED "T12S R6W 1/4 S28 S33 LS 1084 1992". FIR 10" DIA BEARS S37°W, 260.00 FEET SCRIBED "1/4 S33 BT". SET PK NAIL WITH BCBW IN SIDE CENTER OF BASE OF TREE FOR DISTANCE MEASUREMENT. SET 5/8" X 30" IRON ROD WITH PLASTIC CAP STAMPED "LS 1084" BEARS N49°W, 11.83 FEET. SET ORANGE FIBERGLASS POST 1.0 FEET WEST OF CAP.**
- [11] BENTON COUNTY SURVEY NO. 9107 BY JIM S. PETERSON, P.L.S., DATED SEPTEMBER 15, 1991. **FOUND 2-1/2" BRASS CAP.**
- [12] BENTON COUNTY SURVEY NO. 10334 BY JIM S. PETERSON, P.L.S., DATED JANUARY 22, 2001. **FOUND 2-1/2" BRASS CAP. CORNER LIES ON GENTLE SOUTH SLOPE IN EAST-WEST FENCE.**

FIRM/AGENCY: BENTON COUNTY SURVEYOR'S OFFICE
ADDRESS: 360 S.W. AVERY AVE., CORVALLIS, OR 97333; PH. 541-766-6821
RESEARCH BY: DAVID L. MALONE, P.L.S.
DATA ENTRY BY: SAME

BENTON COUNTY CORNER RESTORATION FORM

TOWNSHIP 12 SOUTH, RANGE 6 WEST, W.M., SECTION 28, CORNER S 1/4

DONATION LAND CLAIM _____, CORNER _____

DATE 2/10/92, CORNER RESTORATION FIELD BOOK NUMBER _____, PAGE _____

_____ CONDITION REPORT ONLY; _____ REFERENCED OUT; XX RENEWED; _____ SURVEYED IN

LOCATION AND COMMENTS:

THE CORNER IS 2' SOUTH OF AN EAST - WEST FENCELINE (ON THE NORTH EDGE OF A FIELD), 200' WEST OF A WOODEN GATE, 250' EAST OF A NORTH - SOUTH FENCELINE, AND IN A SMALL SWALE.

PREVIOUS RENEWALS / SURVEYS, ETC.:

- ① 1855 - ORIGINAL GLO SURVEY BY GORDON & PRESTON
- ② 1946 - OLD CORNER RESTORATION BOOK #1, PAGE 240 BY W.C. GALLOWAY
- ③ 1946 - CORNER RESTORATION #1442 BY W.C. GALLOWAY
- ④ NO DATE - MAP NO. 12-6 #32 BY BENTON COUNTY SURVEYOR'S OFFICE
- ⑤ 1968 - C.S. 4688 BY J. GANNON
- ⑥ 1972 - C.S. 5318 BY F. LEMKE
- ⑦ 1975 - C.S. 5894 BY B. UDELL
- ⑧ 1978 - C.S. 6630 BY F. LEMKE

MONUMENTS FOUND (CONDITION AND SOURCE):

FOUND 1 1/2" X 20" CAST IRON WINDOW WEIGHT (SET BY ②) AT CORNER POSITION.

ACCESSORIES FOUND (PROCEDURES AND DESCRIPTION):

* 27" OAK, N46°E, 179.60 FT. (18" OAK, N46 1/2°E, 180.25 FT. - ②, ③, ⑥) HEALED FACE - SET BT TAG

* 19" OAK, S54 3/4°E, 233.84 FT. (11" OAK, S54 3/4°E, 233.84 FT. - ②, ③, ⑥) - HEALED FACE - SET BT TAG

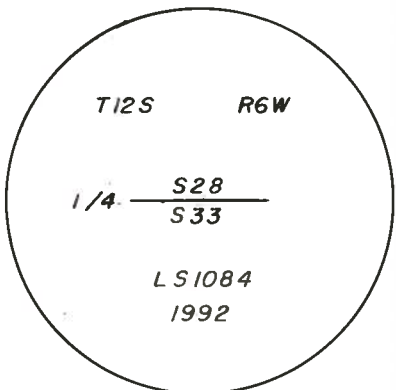
MONUMENT SET (PROCEDURES AND DESCRIPTION):

SET 2" (INSIDE DIAMETER) X 30" GALVANIZED IRON PIPE, WITH 2 1/2" BRASS CAP RIVETTED TO PIPE, IN THE SAME POSITION AS THE FOUND WINDOW WEIGHT. BURIED WINDOW WEIGHT ALONGSIDE CAP. BRASS CAP IS STAMPED AS SHOWN BELOW.

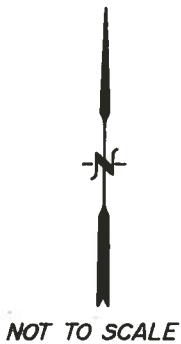
NEW ACCESSORIES:

- * 10" FIR, S37°W, 260.00 FT. SCRIBED: "1/4 S33 BT" SET BT TAG
- SET 5/8" X 30" IRON ROD WITH PLASTC CAP (LS1084), N49°W, 11.83 FT.
- SET ORANGE FIBERGLASS POST 1.0 FT. WEST OF CAP.

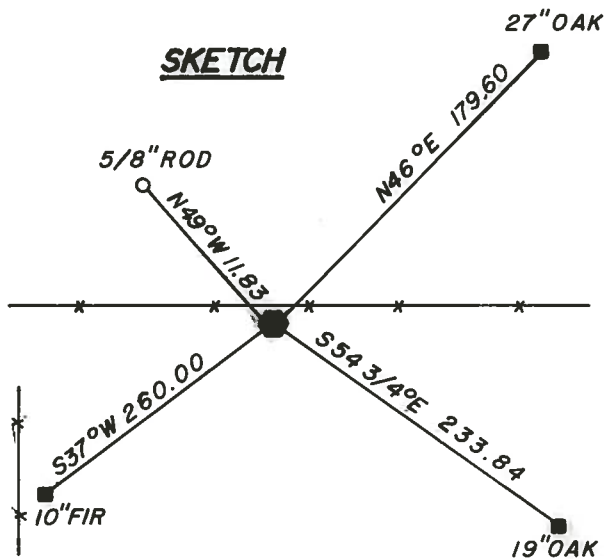
MONUMENT DETAIL



2 1/2" BRASS CAP



SKETCH



NOTES:

BASIS OF BEARINGS IS GALLOWAY HARD COPY 12-6 #28

* SET PK NAIL WITH BENTON COUNTY BRASS WASHER (STAMPED "BENTON COUNTY SURVEYOR") IN SIDE CENTER OF BASE OF BT. BT DISTANCES ARE TO THE PK NAIL.

FIRM / AGENCY:

PETERSON & ASSOCIATES
8155 NW MITCHEL DRIVE
CORVALLIS, OREGON 97330 PHONE: 757-1794

PARTY CHIEF / CREW:

JIM S. PETERSON / JAMES J. WELDON



240

CORNER RESTORATION Book no. 1

N.W. Corner of James Watson D.L.C. #40 T10S. R6W.
Stone 6"x12"x18 in place at fence corner. 1'E. + 1'S. of fence.
Trees gone. No trees near.

County Survey No. 177
by W.C. Galloway
Witnesses July 1944
Norman Thompson

Carl Bush

C.S. 231

July 1944

Witness

P.M. Beardsley

1/4 Sec. Corner bet. Sections 7 and 8 T 12 S. R. 6 W.
Set 1/2" x 1/2" Iron bar
Mkd. Maple 8" (clump) bears S. 18° W. 16 lks.
" Alder 9" (N. of 2 alders) " S. 65° E 20.1 "
" Fir 12" " N. 81° W. 9.2 "
" Maple 10" (Now 26") " North 108" Steep. tree slipped from orig. place

C.S. No. 231

By W.C. Galloway

Witnesses

Norman Thompson

James A. Riley

Ed. Ulicer

Sept. 3, 1944

Twp. Corner T. 11 and 12 S. Rs. 6 and 7 W. Cor. to Secs. $\frac{26}{16}$ T. 11-6
Set 1/2" galv. pipe, W. of Cr. 01 facing N. 1.33 chs.
Fir 24" in dia. bears N. 15° E .13 chain dead
" 24" " " " S 11° E .50 " std.
" 24" " " " S. 40° W. .04 " down
" 28" " " " N. 55° W. .35 " "
Mkd. " 12" " " " N. 40° 50' W. .787 "
" W. " 10" " " " S. 60° 50' W. .394 "
" W " 6" " " " S. 40° 50' E .221 "

As above

Sept. 3, 1944

1/4 Sec. Cor. bet. Sections 1 and 6 T. 12 S. Rs. 6 and 7 W.
Set a Wagon hub
Fir 20" now 46" in dia. bears N. 62° E. .49 std. wire N. for measure
" 24" " 48" " " " S. 60° W. 1.18 " dead
Mkd. " 3" " " " " N. 15° W. .070 chn.
" " 4" " " " " S. 82° W. .036 "
S 46° 03' W. to cen. of Morys Peak Lookout

C.S. #262

By W.C. Galloway

For Ed. Mesacher

and Geo. Owens

as witnesses

Oct. 20, 1944

C.S. #161

By W.C.G.

Witnesses

V.M. Patterson

C.W. Edwards

Oct. 17, 1945

C.S. #184

by W.C. Galloway

Witnesses

V.M. Patterson

Glenn Decker

Jan. 16, 1946

1/4 Section Corner bet. Secs. 18 and 19 T. 14 S. R. 8 W.
Set 3/4" pipe, Original Corner, E. of small Creek
Fir 10" in dia. bears N. 6° E. .143 chs. (.15 cen. of tree) std.
Mkd. " 25" " " " S. 40° E. .225 " " " "

1/4 Section Corner bet. Secs. 11 and 12 T 14-5
Sand Stone in place, Cen. of 40' Road
Set 3/4" Galvanized Pipe 20' N. at Lts. to line thru Sec. 12
" 3/4" x 50" Iron rod 3. 20'
Cedar 16" in dia. bears N. 37° 45' E. .958, not mkd.

1/4 Section Corner bet. Secs. 28 & 33 T. 12-6
Set a 1 1/2" cast iron 20" long, Window weight.
From oak stump 30° S. 46 1/2° E. 3.36 chs. (N.W. tree gone)
Mkd. " 18" in dia. bears N. 46 1/2° E. 2.731
" " 11" " " " S. 54° 45' E. 3.543

$\frac{1}{4}$ -Section corner between sections 28 and 33, Twp. 12-6

1442

Reestablishment by W. C. Galloway

January 16, 1946

Set a $1\frac{1}{2}$ " cast iron 20" long, window weight

Oak stump 30" S $46\frac{1}{2}^{\circ}$ E

Oak 18" in diam bears N $46\frac{1}{3}^{\circ}$ E

Oak 11" in diam bears S $54^{\circ} 45'$ E

3.36 chains

2.731 chains

3.543 chains

Witnesses V. M. Patterson and Glenn Decker