

**126400240**

DATE 12/18/2015TOWNSHIP 12 SOUTH, RANGE 6 WEST, WILLAMETTE MERIDIAN; SECTION 27 CORNER WEST 1/4  
DONATION LAND CLAIM N/A CORNER N/A**COMMON CORNER(S):**

EAST 1/4 CORNER SECTION 28

**RECORDS (INFORMATION IN *BOLD ITALICS* IS COUNTY STAFFS' INTERPRETATION OF THE RECORD)**

BASED ON EXTENSIVE RESEARCH AND RECOVERY OF EVIDENCE, THIS OFFICE HAS DETERMINED THAT MOST GENERAL LAND OFFICE SURVEYORS IN BENTON COUNTY MEASURED TO THE FACE OF BEARING TREES.

- [01] GENERAL LAND OFFICE (GLO) NOTES BY HARVEY GORDON, D.S, AND JOSIAH W. PRESTON, D.S., DATED AUGUST 11, 1854. SET POST FROM WHICH A R. FIR 20" DIA BEARS *S14°W, 100 LINKS (66.00 FEET)*; A R. FIR 40" DIA BEARS *S16°E, 138 LINKS (91.08 FEET)*.
- [02] BENTON COUNTY ROAD RECORDS BOOK NO. 2, PAGE 142-144, BY G. H. WAGGONER, C.S., DATED MARCH 29, 1901. CORNER NOT DESCRIBED.
- [03] BENTON COUNTY SURVEY NO. 197 (OLD NO. 101) FIELD NOTES (FIELD BOOK 8, PAGE 25) BY W. C. GALLOWAY, D.C.S., DATED DECEMBER 14, 1910. 7/8" STEEL ROD. OAK 18" DIA BEARS *S64°53'E, 2.410 CHAINS (159.06 FEET)*; OAK 18" DIA BEARS *N32°13'W, 4.932 CHAINS SLOPE (325.51 FEET)*.
- [04] BENTON COUNTY CORNER RESTORATION BOOK NO. 1, PAGE 16, BY W. C. GALLOWAY, D.C.S., DATED DECEMBER 17, 1910. SET 7/8" STEEL ROD. OAK 18" DIA (CSBT) BEARS *S64°53'E, 2.410 CHAINS (159.06 FEET)*; OAK 15" DIA (CSBT) BEARS *N32°13'W, 4.932 CHAINS (325.51 FEET)*.
- [05] BENTON COUNTY CORNER RESTORATION NO. 1436. TRANSCRIBED FROM RECORD [04] AND MAY CONTAIN ERRORS AND/OR OMISSIONS.
- [06] BENTON COUNTY SURVEY NO. 201 FIELD NOTES (FIELD BOOK 7, PAGE 39) BY J. A. GANONG, D.C.S., DATED JANUARY 23, 1911. CORNER NOT DESCRIBED.
- [07] BENTON COUNTY MAP NO. 12-6-00028 BY WALTER W. LARSEN, D.C.S., DATED MARCH 17, 1922. 7/8" STEEL ROD. OAK 18" DIA (CSBT) BEARS *S64°53'E, 2.410 CHAINS (159.06 FEET)*; OAK 18" DIA (CSBT) BEARS *N32°13'W, 4.932 CHAINS SLOPE (325.51 FEET)*.
- [08] BENTON COUNTY SURVEY NO. 2861 BY OTTO H. MEYER, P.E., DATED OCTOBER 30, 1956. CORNER NOT DESCRIBED.
- [09] BENTON COUNTY CORNER RESTORATION NO. 4007 BY JIM S. PETERSON, P.L.S., DATED AUGUST 21, 1991. NOTE: THIS CORNER IS A PROPORTIONED POSITION AS ESTABLISHED BY W. C. GALLOWAY IN C.S. 197. FOUND 3/8" IRON ROD WITH 2 NUTS ON TOP AT CORNER POSITION. FOUND NO TRACE OF ORIGINAL BEARING TREES. OAK 30" DIA (CSBT) BEARS *N32°35'W, 322.60 FEET, SLOPE DISTANCE = 325.28 FEET, HEALED FACE*. SET PK NAIL WITH BRASS WASHER STAMPED "BENTON COUNTY SURVEYOR" (BCBW) IN SIDE CENTER OF BASE OF TREE. FIR 16" DIA BEARS *SOUTHWEST, 1.5 FEET, APPEARS TO HAVE A DOUBLE FACE ABOUT 15-20 YEARS OLD*. SET 2" INSIDE DIAMETER X 30" GALVANIZED IRON PIPE, WITH 2-1/2" BRASS CAP RIVETTED TO PIPE, IN THE SAME POSITION AS THE RECOVERED 3/8" IRON ROD. THE BRASS CAP IS STAMPED "T12S R6W 1/4 S28 S27 LS 1084 1991". BURIED FOUND ROD ALONGSIDE CAP. FIR 21" DIA BEARS *S35°E, 18.65 FEET, SCRIBED "1/4 S27 BT"*. SET PK NAIL WITH BCBW IN SIDE CENTER OF BASE OF TREE. FIR 16" DIA BEARS *S86°W, 16.38 FEET, SCRIBED "1/4 S28 BT"*. SET PK NAIL WITH BCBW IN SIDE CENTER OF BASE OF TREE. FIR 19" DIA BEARS *N7°W, 16.96 FEET, SCRIBED "1/4 S28 BT"*. SET PK NAIL WITH BCBW IN SIDE CENTER OF BASE OF TREE. FIR 7" DIA BEARS *N58°E, 41.63 FEET, SCRIBED "1/4 S27 BT"*. SET PK NAIL WITH BCBW IN SIDE CENTER OF BASE OF TREE. SET ORANGE FIBERGLASS POST 1 FOOT NORTH.
- [10] BENTON COUNTY SURVEY NO. 9107 BY JIM S. PETERSON, P.L.S., DATED SEPTEMBER 15, 1991. FOUND 2-1/2" BRASS CAP.

**FIRM/AGENCY:** BENTON COUNTY SURVEYOR'S OFFICE  
**ADDRESS:** 360 S.W. AVERY AVE., CORVALLIS, OR 97333; PH. 541-766-6821  
**RESEARCH BY:** DAVID L. MALONE, P.L.S.  
**DATA ENTRY BY:** SAME

DATE 01/25/2000TOWNSHIP 12 SOUTH, RANGE 06 WEST, WILLAMETTE MERIDIAN; SECTION 27 CORNER WEST 1/4  
DONATION LAND CLAIM N/A CORNER \_\_\_\_\_**COMMON CORNER(S):**

THE EAST QUARTER CORNER OF SECTION 28.

**RECORDS (INFORMATION IN *BOLD ITALICS* IS COUNTY STAFFS' INTERPRETATION OF THE RECORD)**

- [01] ORIGINAL GLO SURVEY BY HARVEY GORDON AND JOSIAH PRESTON, D.S., APPROVED FEBRUARY 28, 1855. *SET POST WITH 2 BEARING TREES, MEASURED TO THE FACE.*
- [02] COUNTY SURVEY NO. 197 NOTES (FIELD BOOK NO. 8, PAGE 25) BY W. C. GALLOWAY, D.C.S., DATED DECEMBER 14, 1910. *SET 7/8" STEEL ROD BY SINGLE PROPORTIONATE MEASUREMENT WITH 2 BEARING TREES (SLOPE DISTANCE TO 1).*
- [03] OLD CORNER RESTORATION BOOK NO. 1, PAGE 16, BY W. C. GALLOWAY, DATED DECEMBER 17, 1910. *SET 7/8" STEEL ROD WITH 2 BEARING TREES.*
- [04] CORNER RESTORATION NO. 1436. *THIS IS A TRANSCRIBED COPY OF RECORD [03] AND MAY CONTAIN ERRORS AND OMISSIONS.*
- [05] COUNTY SURVEY NO. 201 NOTES (FIELD BOOK NO. 7, PAGE 39) BY J. A. GANONG, D.C.S., DATED JANUARY 23, 1911. *TIED WITH NO DESCRIPTION.*
- [06] MAP NO. 12-6-00028, BY WALTER W. LARSEN, D.C.S., DATED MARCH 17, 1922. *7/8" STEEL ROD WITH 2 BEARING TREES.*
- [07] COUNTY SURVEY NO. 2861, BY OTTO MEYER, P.E., DATED OCTOBER 30, 1956. *FOUND AND TIED WITH NO DESCRIPTION.*
- [08] CORNER RESTORATION NO. 4007, BY JIM PETERSON, P.L.S., DATED AUGUST 21, 1991. *FOUND 3/8" ROD AND 1 BEARING TREE, SET BRASS CAP WITH 4 BEARING TREES.*
- [09] COUNTY SURVEY NO. 9107, BY JIM PETERSON, DATED SEPTEMBER 15, 1991. *FOUND BRASS CAP.*
- [10] BENTON COUNTY GIS/DEA MAPPING PROJECT, BY RAY WILSON, D.C.S., DATED JULY, 1997. *FOUND BRASS CAP, ESTABLISHED STATE PLANE COORDINATES FROM RTK/GPS CONTROL.*

**COMMENTS/LOCATION/ETC:****NOTES:**

THIS IS A MICROSOFT WORD 97 DOCUMENT NAMED "26400240" CREATED FROM A BOILER PLATE DOCUMENT NAMED "HISTORY", WHICH HAS A STYLESHEET NAMED "CORNER" ATTACHED TO IT.

**FIRM/AGENCY:** BENTON COUNTY SURVEYOR'S OFFICE  
**ADDRESS:** 360 S.W. AVERY AVE. CORVALLIS OR 97333; PH. 766-6821  
**RESEARCH BY:** CURTIS J. LIESENFELT, P.L.S.  
**DATA ENTRY BY:** SAME

**BENTON COUNTY CORNER RESTORATION FORM**

4007

SECTION 27 TOWNSHIP 12 SOUTH, RANGE 6 WEST, DLC \_\_\_\_\_, COR. WI/4  
DATE 8-21-91 CORNER RESTORATION FIELD BOOK NUMBER \_\_\_\_\_ PAGE \_\_\_\_\_

CORNER DESIGNATION:

THE 1/4 CORNER OF SECTIONS 27 & 28, T12S, R6W, W.M.

\_\_\_\_ CONDITION REPORT ONLY  
\_\_\_\_ REFERENCED OUT  
XX RENEWED  
\_\_\_\_ SURVEYED IN

LOCATION AND COMMENTS:

FROM GATE AT WEST END OF AIRPORT ROAD (25280) DRIVE WESTERLY ON DIRT ROAD FOR 0.7 MILE TO JUNCTION. TAKE RIGHT FORK FOR 200', THEN WALK SOUTH 250' TO CORNER. CORNER LIES ON LARGE FLAT AREA.

PREVIOUS RENEWALS/SURVEYS, ETC.:

- ① 1855 - ORIGINAL GLO SURVEY BY GORDON AND PRESTON
- ② 1910 - C.S. 197 BY W.C. GALLOWAY
- ③ 1910 - OLD CORNER RESTORATION BOOK # 1, PAGE 16 BY W.C. GALLOWAY
- ④ 1910 - CORNER RESTORATION # 1436 BY W.C. GALLOWAY
- ⑤ 1911 - C.S. 201 BY J. A. GANONG
- ⑥ 1922 - MAP NO. 12-6 # 28 BY W. W. LARSEN
- ⑦ 1956 - C.S. 2861 BY OTTO MEYER

NOTE: THIS CORNER IS A PROPORTIONED POSITION AS ESTABLISHED BY W.C. GALLOWAY IN C.S. 197

MONUMENTS AND ACCESSORIES FOUND (CONDITION AND SOURCE):

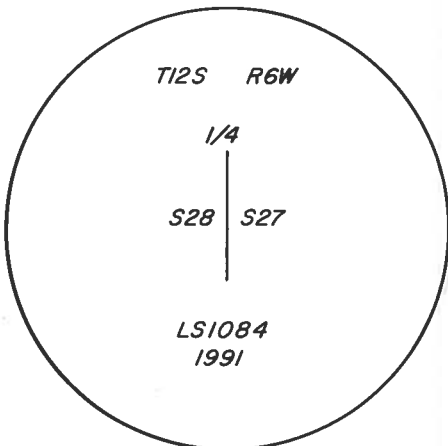
FOUND 3/8" IRON ROD WITH 2 NUTS ON TOP AT CORNER POSITION (C.S. 197 CALLS FOR A 7/8" ROD)  
BT'S FOUND:

FOUND NO TRACE OF ORIGINAL BT'S

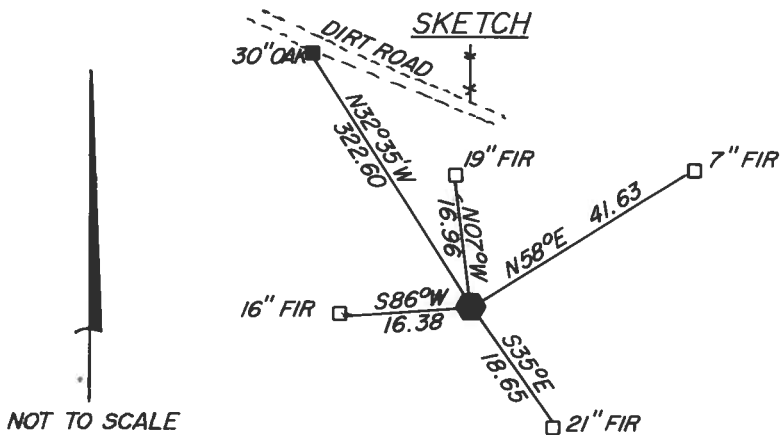
\* 30" OAK, N32°35'W, 322.60 FT. - SLOPE DISTANCE = 325.28 FT. - HEALED FACE - SET BT TAG  
(18" OAK, N32°13'W, 325.51 FT. ON SLOPE - ②)

16" FIR 1.5 FT. TO SW OF CORNER APPEARS TO HAVE A DOUBLE FACE ABOUT 15 - 20 YEARS OLD

MONUMENT DETAIL



2 1/2" BRASS CAP



NOT TO SCALE

MONUMENT SET (PROCEDURES AND DESCRIPTION):

SET 2" (INSIDE DIAMETER) X 30" GALVANIZED IRON PIPE, WITH 2 1/2" BRASS CAP RIVETTED TO PIPE, IN THE SAME POSITION AS THE RECOVERED 3/8" IRON ROD. THE BRASS CAP IS STAMPED AS SHOWN. BURIED FOUND ROD ALONGSIDE CAP.

NEW ACCESSORIES:

BT'S SET:

- |                             |                       |            |
|-----------------------------|-----------------------|------------|
| * 21" FIR, S35°E, 18.65 FT. | SCRIBED: "1/4 S27 BT" | SET BT TAG |
| * 16" FIR, S86°W, 16.38 FT. | SCRIBED: "1/4 S28 BT" | SET BT TAG |
| * 19" FIR, N07°W, 16.96 FT. | SCRIBED: "1/4 S28 BT" | SET BT TAG |
| * 7" FIR, N58°E, 41.63 FT.  | SCRIBED: "1/4 S27 BT" | SET BT TAG |

SET ORANGE FIBERGLASS POST 1 FOOT NORTH

NOTES:

BASIS OF BEARINGS IS G.H.C. 12-6 # 28

\* SET PK NAIL WITH BENTON COUNTY BRASS WASHER STAMPED "BENTON COUNTY SURVEYOR" IN SIDE CENTER OF BASE OF BT. BT DISTANCES ARE TO SIDE CENTER.

FIRM/AGENCY: PETERSON & ASSOCIATES  
8155 NW MITCHEL DRIVE  
CORVALLIS, OREGON

PHONE: 757-1794

PARTY CHIEF/CREW: JIM S. PETERSON/JOE B. HINDS

REGISTERED  
PROFESSIONAL  
LAND SURVEYOR

OREGON  
JULY 31, 1976  
JIM S. PETERSON  
1084

Survey #100  
W.C. G.

- ✓ S.E. cor. of Clement Barker D.L.C. # 60 Tp. 12-6.  
Set stone 5" x 8" x 10" orig. cor. stump hole.  
Fir 20" in dia. bears S. 37° 35' E. .625'  
Oak 15" " " " N. 16° W. .82' std.
- Witnesses J. M. Henkle, H. Plagman + A. Majestrik Dec. 10, 1910.
- " ✓ N.W. of S.H. White D.L.C. # 61. Tp. 12-6.  
Set sandstone 6" x 16" x 16"  
Fir 30" in dia. bears N. 4° E. .41' std.
- Witnesses Fred Seemet, A. Majestrik + H. Plagman Dec. 10, 1910.
- " ✓ S.W. cor. of C.P. Blair D.L.C. # 57 Tp. 12-6.  
Set sandstone 6" x 14" x 14" orig. cor.  
Fir 14" in dia. bears N. 34° 17' E. .280'  
" 18" " " " S. 40° E. .89' std.  
" 18" " " " N. 20° 37' W. .152'
- Witnesses Fred Seemet, A. Majestrik + H. Plagman Dec. 10, 1910.
- " ✓ N.E. cor. of S. H. White D.L.C. # 61. Tp. 12-6.  
Mkd. stone <sup>std.</sup>  
Oak 18" N. 22° E. 3.57' std.
- Witnesses G.F. Miller, Fred Seemet + A. Majestrik Dec. 14, 1910.
- " ✓ N.W. cor. of C.P. Blair D.L.C. # 57 Tp. 12-6.  
Set boulder 8" in dia. two stumps std. orig. cor.  
Oak 12" in dia. bears S. 30' E. .874'  
" 11" " " " N. 87° 41' W. .296'
- Witnesses Fred Seemet, A. Majestrik + H. Plagman Dec. 10, 1910.
- " #101 ✓ 1/4 sec. cor. between secs. 27 + 28 Tp. 12-6.  
W.C. G. set 3/8" steel rod.  
Oak 18" in dia. bears S. 64° 53' E. 2.410'  
" 15" " " " N. 32° 13' W. 4.932'
- Witnesses Elmer Benton + Robert Sandiford Dec. 17, 1910.
- " ✓ Sec. cor. to secs. 27, 28, 33 + 34 Tp. 12-6.  
Set L iron. orig. cor.  
Fir 40" in dia. bears N. 71° E. .89' std.  
" 36" " " " S. 31° E. .17' "  
" 15" " " " S. 64° 40' W. .274'  
" 36" " " " N. 10° W. .12' "
- Witnesses Elmer Benton + Robert Sandiford Dec. 16, 1910.
- " ✓ 1/4 sec. cor. bet. secs. 27 + 34 Tp. 12-6.  
Set 1/2 pipe orig. cor.  
Fir 20" in dia. bears S. 21° 21' W. .968'  
" 36" " " " N. 37° W. .27' std.
- Witnesses Elmer Benton + Robert Sandiford Dec. 17, 1910.

$\frac{1}{4}$ -Section corner between sections 27 and 28, Twp. 12-6

1436

Reestablishment by W. C. Gallaway

December 17, 1910

Set  $\frac{7}{8}$ " steel rod

Oak 18" in diam bears S.  $64^{\circ} 53'$  E

2.410 chains

Oak 15" in diam bears N.  $32^{\circ} 13'$  W

4.932 chains

Witnesses Elmor Benton and Robert Sandiford