

1268600200

CORNER FILE TRACKING

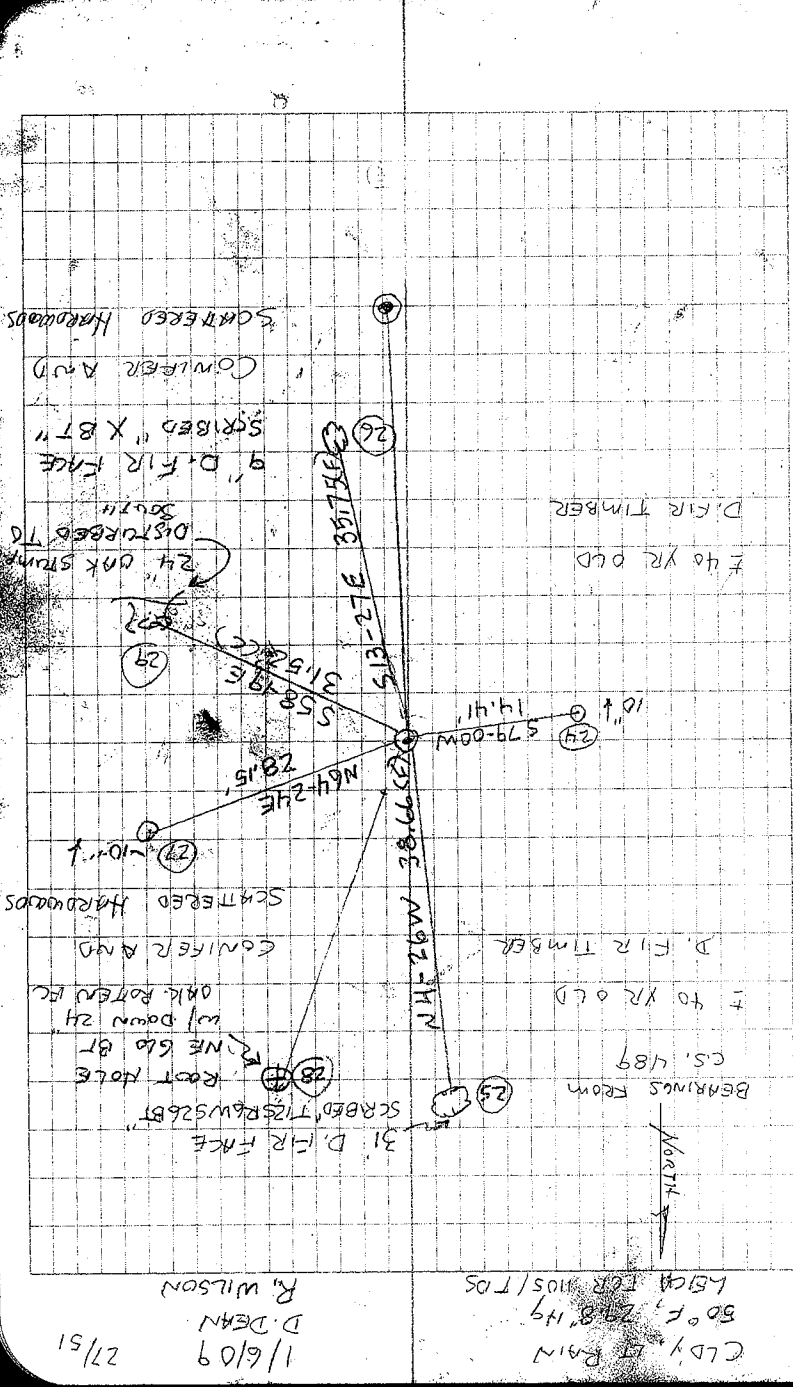
H:\Survey\Corners\Misc\Filetrac2.doc
06/15/2003

CORNER NUMBER
126600200

STEP	HISTORY	RESTORATION
Form Prepared, DB	12/08/08	01/07/09
Field Inspection, DB	01/06/08	01/06/08
Form Checked, DB	01/14/08	01/14/08
Form Edited, DB	01/14/08	01/14/08
Form Signed, DB	01/14/08	01/14/08
Counter Index	01/07/09	01/07/09
GIS Index	—	—
Authorize Payment, DB	—	—
Archive Digital Files	01/14/08	01/14/08
Collect Documents	01/14/08	01/14/08
Scanned		
Copy For Filming	01/14/08	01/14/08
Filed, DB		
Finish index (count unit)	01/06/09	01/06/09
Filmed (Archived), DB		
PDH File		

(DB) = Entry needed in database (Access).

COMMENTS:



27/51
1/6/09
D. DEAN
R. WILSON

Cldy. RAIN
50°F, 29.8" Hg
LEICA FOR 1105/TDS

126 600 200
26125
REMOVEMENTS
35136 T125 RW
Found 3/4" x 35" IRON PIPE FLUSH w/GR
AND TOP 14" BENT 0-3" NW. HELD SPND
HOLE FOR CORNER POSITION. Fd 19" x 8x7
STONE FLUSH w/ GROUND ON SE SIDE
OF PIPE.
Fd SE GLO BT NOW 25" ROTTEN OAK
STUMP TIPPED SLY w/ ROTTEN FRAG - NO VS.
Fd NE GLO BT - NOW 24" ROTTEN OAK
UPROOT w/ ROTTEN FRAG - NO VS. NW
1/2 Sd GLO BTs MISSING. CS BT 15
MISSING. REMOVED I.P. PIPE 2" x 3 1/2"
GIP w/ 3/4" ALUM. DISK CONC IN
TOP 1" BURIED PIPE ON E/W SIDE
NEW MON. IN HORIZ POSITION 6" BURIED
STONE ON N/W SIDE 2" SET 6"
CARBONITE SQUAYE MARKER POST
V E SOUTH.

#23
T125 RW
526 525
535 536
2009

21-22-23 (23) AS SET 35136
26125
28) HLT
2-21-22 23) HLT
3) 314 D.O. 761
1) I.R. P6. 49
1-2-21

CS # 197



Sec. cor. to secs 25, 26, 35 & 36 T. 12 S. R. 6 W.
 Set 3/4" pipe N.W. stamp std. orig. cor.
 Oak 12" bears N. 33° E. 1.72 ehs. std.
 " 15" " S. 57° E. .49 " "
 " 18" " S. 22° W. .68 " "
 " 34" " N. 2° W. .080 "

Witnesses J.B. & F.A. Arrantz & P.S. Bunting Jan. 13, 1915

1/4 sec. cor. between secs. 25 & 36 T.P. 12 S. R. 6 W.
 Set 3/4" pipe state print.

Oak 18" bears N. 55° E. 3.65 ehs. std. one fork broken
 " 15" " S. 43° 15' W. 1.60 " "

Witnesses J.B. & F.A. Arrantz, Jan. 13, 1915.

1/4 sec. cor. bet. secs. 3 & 10 T. 12 S. R. 6 W.

Set a stone 6" x 8" x 8"

Read oak 5" bears N. 35° E. 1.8" ehs. std.

Fir 13" " N. 86° 30' E. 2.44 ehs.

" 12" " S. 18° E. 1.08 " std. Feb. 2, 1915.

Witnesses W.H. Jesse Hill, P.F. Smith & Ernest Koberstein

1/4 sec. cor. between secs. 3 & 4 T.P. 12 S. R. 6 W.

Set a 2" x 60" pipe set from oak stamp.

Fir 12" bears S. 51° 55' W. 3.045 ehs.

Oak 5" " N. 26° 23' W. 3.201 "

Witnesses Jesse Hill, P.F. Smith & E. Koberstein Feb. 4, 1915.

1/4 sec. cor. between secs. 33 & 4 T.P. 11 & 12 S. R. 6 W.

Set an oak stake flush with ground part of a bottle on the bottom of stake

Oak 24" bears N. 26° 30' E. 2.04 ehs. std.

" 24" " S. 64° W. 1.43 " "

Witnesses Jesse Hill, P.F. Smith & E. Koberstein Feb. 4, 1915.

1/4 sec. cor. between secs. 4 & 5 T.P. 12 S. R. 6 W.

Set 3/4" x 3" x 18" bar of iron S.W. two above but hole left

Ash 8" bears S. 63° 30' E. 3.00 ehs. std.

Oak 3" " S. 3° 30' W. 1.318 "

Witnesses John Luderman & Ernest Koberstein Feb. 9, 1915.

Most E. NE corner of Jesse Wood's D.L.C. # 75 T. 12 S. R. 6 W.

Set bottle Iron pin in bottle Part of T on NW stamp oak down

Fir 18" bears N. 15° 30' E. 8.22 ehs.

Yew 4" " S. 89° 05' E. 10.10 "

Witnesses John Luderman W.H. Hill & E. Koberstein Feb. 11, 1915.

Section corner to sections 25, 26, 35, and 36, Twp. 12 S R 6 W 1433

Reestablishment by W. C. Galloway

January 13, 1915

Set $\frac{3}{4}$ " pipe. N. W. stump standing, original corner

Oak 12" in diam bears N 33° E

Oak 15" in diam bears S 57° E

Oak 18" in diam bears S 22° W

Oak 34" in diam bears N 2° W

.72 chains (standing)

.49 chains (standing)

.68 chains (standing)

.080 chains

Witnesses J. B. and F. A. Arrants and P. S. Buntin

126600200

DATE 12/08/2008TOWNSHIP 12 SOUTH, RANGE 6 WEST, WILLAMETTE MERIDIAN; SECTION 25 CORNER SOUTHWEST
DONATION LAND CLAIM COLBERT P. BLAIR NO. 57 CORNER NONE**COMMON CORNER(S):**SOUTHEAST SECTION 26
NORTHEAST SECTION 35
NORTHWEST SECTION 36**RECORDS (INFORMATION IN BOLD ITALICS IS COUNTY STAFFS' INTERPRETATION OF THE RECORD)**

BASED ON EXTENSIVE RESEARCH AND RECOVERY OF EVIDENCE, THIS OFFICE HAS DETERMINED THAT MOST GENERAL LAND OFFICE SURVEYORS MEASURED TO THE FACE OF BEARING TREES.

- [01] GENERAL LAND OFFICE (GLO) NOTES BY HARVEY GORDON, D.S. AND JOSIAH PRESTON, D.S. DATED JULY 31, 1854. SET POST CORNER OF SECS. 25, 26, 35 AND 36. A W. OAK 15 IN DIAM. BEARS S57°E, 49 LINKS DIST. (32.34 FEET); A W. OAK 18 IN DIAM. BEARS S22°W, 68 LKS DIST. (44.88 FEET); A W. OAK 12 IN DIAM. BEARS N33°E, 72 LKS DIST. (47.52 FEET); A W. OAK 10 IN DIAM. BEARS N38°W, 66 LKS DIST. (43.56 FEET).
- [02] COUNTY SURVEY 489 (OLD NO. 197) FIELD NOTES (FIELD BOOK NO. 18, PAGE 34) BY W. C. GALLOWAY, C.S. DATED JANUARY 11, 1915. SET 3/4" PIPE. N.W. GLO STUMP CHECKS; OAK 12" N33°E, .72 CHS (47.52 FEET) STANDING; OAK 15" S57°E, .49 CHS (32.34 FEET) STANDING; OAK 18" S22°W, .68 CHS (44.88 FEET) STANDING; OAK 34" N2°W, .080 CHS (5.28 FEET).
- [03] BENTON COUNTY CORNER RESTORATION BOOK 1, PAGE 89 BY W. C. GALLOWAY, C.S. DATED JANUARY 13, 1915. SET 3/4" PIPE. N.W. GLO STUMP STANDING; OAK 12" BEARS N33°E, 0.72 CHAINS (47.52 FEET) STANDING; OAK 15" BEARS S57°E, 0.49 CHAINS (32.34 FEET) STANDING; OAK 18" BEARS S22°W, 0.68 CHAINS (44.88 FEET) STANDING; OAK 34" BEARS N2°W, 0.080 CHAINS (5.28 FEET).
- [04] BENTON COUNTY CORNER RESTORATION NO. 1433. TRANSCRIBED FROM RECORD [02] AND MAY CONTAIN ERRORS AND OR OMISSIONS.
- [05] BENTON COUNTY MAP NO. 12-6-00031 BY W. C. GALLOWAY, C.S. DATED JANUARY 20, 1915. 3/4" PIPE. NW GLO STUMP CHECKS; OAK 18" N33°E, .72 CHS (47.52 FEET) STANDING; OAK 15" S57°E, .49 CHS (32.34 FEET) STANDING; OAK 18" S22°W, .68 CHS (44.88 FEET) STANDING; OAK 34" N2°W, .080 CHS (5.28 FEET).

NOTES:

THIS IS A MICROSOFT WORD 2003 DOCUMENT NAMED "26600200" CREATED FROM A BOILER PLATE DOCUMENT NAMED "HISTORY", WHICH HAS A STYLESHEET NAMED "CORNER" ATTACHED TO IT.

FIRM/AGENCY: BENTON COUNTY SURVEYOR'S OFFICE**ADDRESS:** 360 S.W. AVERY AVE. CORVALLIS OR 97333; PH. 766-6821**RESEARCH BY:** DAVID M. DEAN, P.L.S.**DATA ENTRY BY:** SAME

**BENTON COUNTY CORNER RESTORATION FORM, PAGE 1 OF 2, 126600200R2
SEE CORNER HISTORY FORM FOR RECORDS ETC.**

CORNER RESTORATION FIELD BOOK NUMBER 27 PAGE(S) 51 DATE 01/06/2009
TOWNSHIP 12 SOUTH, RANGE 6 WEST, WILLAMETTE MERIDIAN; SECTION 25 CORNER SOUTHWEST
DONATION LAND CLAIM COLBERT P. BLAIR NO. 57 CORNER NONE
CONDITION REPORT ; REFERENCED OUT ; RENEWED XX; SURVEYED IN

LOCATION AND COMMENTS:

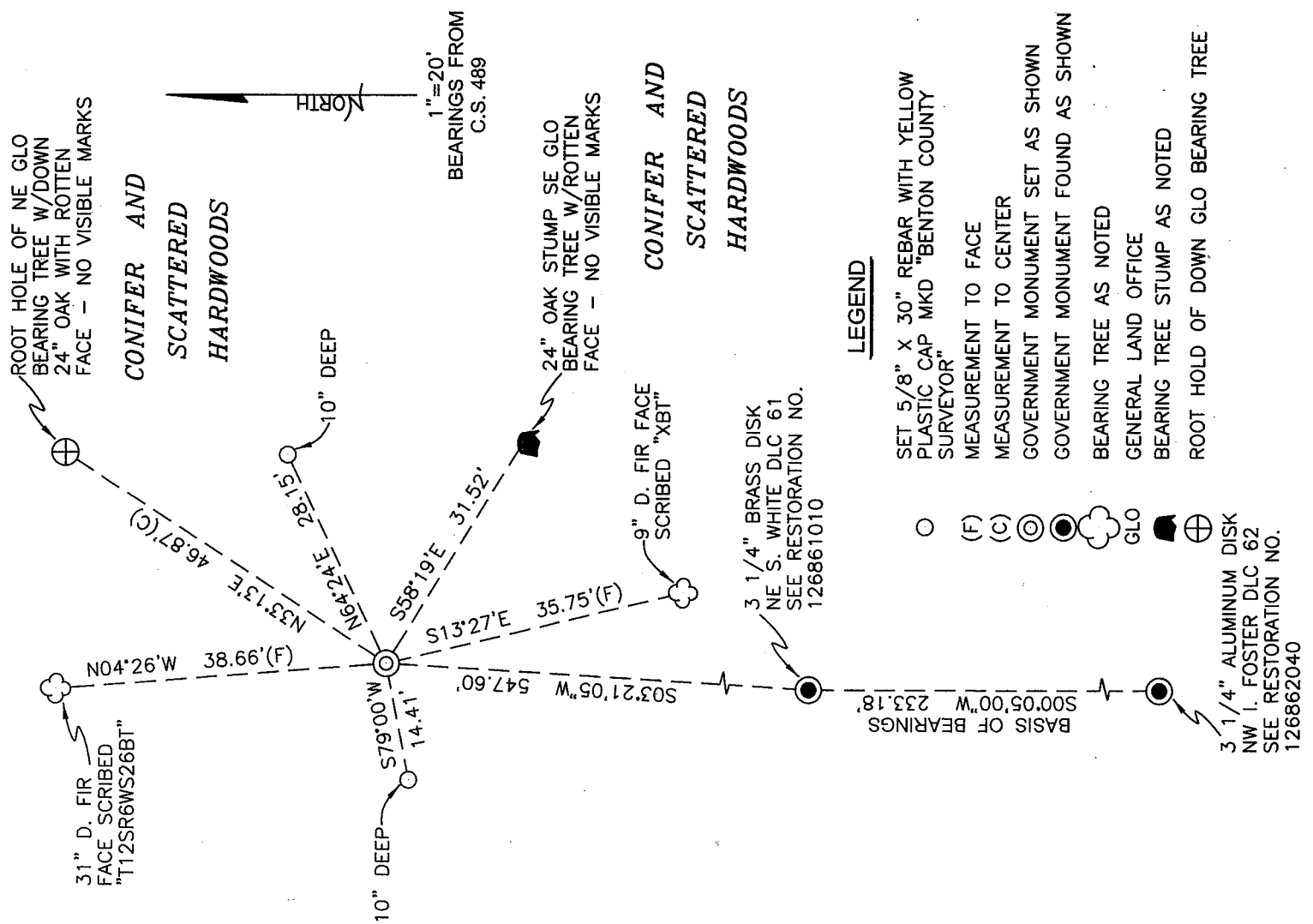
CORNER IS LOCATED IN A STAND OF ±40 YEAR OLD D. FIR PLANTATION ON A GENTLE NORTHERLY FACING SLOPE. TO REACH CORNER FROM THE JUNCTION OF AIRPORT ROAD AND PETERSON ROAD, TRAVEL SOUTERLY AND WESTERLY ON PETERSON ROAD FOR 0.53 MILES TO DRIVEWAY TO 31409 PETERSON ROAD; THEN LEFT ON DRIVEWAY FOR 0.12 MILES TO RESIDENCE AND PARK; THEN WALK S88°E, ±850 FEET TO CORNER. CORNER IS POOR FOR PREMARKING AND GPS CONTROL.

MONUMENTS AND ACCESSORIES FOUND (CONDITION AND SOURCE):

1. FOUND 3/4" X 35" IRON PIPE, FLUSH WITH GROUND LEVEL FOR CORNER POSITION. TOP 14" OF PIPE WAS BENT ±0.3 FEET NORTHWESTERLY. HELD SPIN HOLE FOR EXACT CORNER POSITION.
(SET POST PER RECORD [01]).
(SET 3/4" PIPE FROM GLO BEARING TREES PER RECORDS [02] AND [03]).
(3/4" PIPE PER RECORD [05]).
2. FOUND 3 1/4" BRASS DISK AT THE NORTHEAST CORNER OF THE SANFORD H. WHITE DLC NO. 61, S03°21'05"W, 547.60 FEET, AS SET PER BENTON COUNTY CORNER RESTORATION 126861010.
(STONE, S03°25'28"W, 546.95 FEET [CALCULATED] PER RECORD [05]).
3. FOUND ROOT HOLE OF NORTHEAST GLO BEARING TREE, N33°13'E, 46.87 FEET TO APPROXIMATE CENTER OF ROOT HOLE. ORIGINAL OAK FROM ROOT HOLE (NOW ±24" DIAMETER) IS DOWN AND LYING EASTERLY OF ROOT HOLE WITH ROTTEN FACE BUT NO VISIBLE SCRIBING.
(W. OAK 12" DIAMETER BEARS N33°E, 47.52 FEET PER RECORD [01]).
(FOUND OAK 12", N33°E, 47.52 FEET PER RECORDS [02], [03] AND [05]).
4. FOUND 24" OAK STUMP WITH ROTTEN FACE, S58°19'E, 31.52 FEET TO APPROXIMATE POSITION OF ORIGINAL FACE. STUMP IS PARTIALLY UPROOTED AND TIPPED SOUTHERLY. NO VISIBLE SCRIBING ON ROTTED FACE.
(W. OAK, 15" DIAMETER BEARS S57°E, 32.34 FEET PER RECORD [01]).
(FOUND OAK 15", S57°E, 32.34 FEET PER RECORDS [02], [03] AND [05]).
5. FOUND 3 1/4" ALUMINUM DISK AT THE NORTHWEST CORNER OF THE ISAAC FOSTER DLC NO. 62, S03°21'W, 547.60 FEET AND S00°05'W, (BASIS OF BEARINGS FOR THIS RESTORATION) 233.18 FEET, AS SET PER BENTON COUNTY CORNER RESTORATION 126862040.

MONUMENT SET (PROCEDURES AND DESCRIPTION):

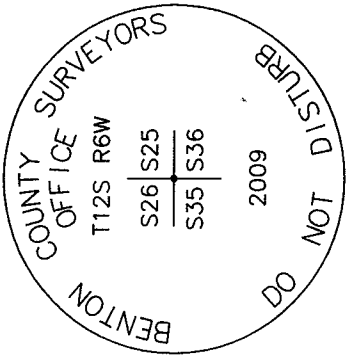
HELD THE 3/4" IRON PIPE FOR THE TRUE CORNER POSITION, WHICH IS IN GOOD AGREEMENT WITH THE RECOVERED REMAINS OF THE NORTHEAST AND SOUTHEAST GLO BEARING TREES. REMOVED THE 3/4" X 35" IRON PIPE AND SET A 2" X 31 1/2" GALVANIZED IRON PIPE WITH A 3 1/4" ALUMINUM DISK CONCRETED IN THE TOP, FLUSH WITH GROUND LEVEL AND MARKED AS SHOWN ON PAGE 2 OF 2. BURIED THE IRON PIPE ON THE EASTERLY SIDE OF NEW MONUMENT IN A HORIZONTAL POSITION AND 6" BELOW GROUND LEVEL. SET A 6 FOOT ORANGE CARSONITE "SURVEY MARKER" POST 0.5 FEET SOUTH OF NEW MONUMENT.



±40 YEAR OLD
D. FIR TIMBER

±40 YEAR OLD
D. FIR TIMBER

MONUMENT DETAIL



3 1/4" ALUMINUM DISK

LEGEND

- (F) SET 5/8" X 30" REBAR WITH YELLOW PLASTIC CAP MKD "BENTON COUNTY SURVEYOR" MEASUREMENT TO FACE
- (C) MEASUREMENT TO CENTER
- ⊙ GOVERNMENT MONUMENT SET AS SHOWN
- ⊙ GOVERNMENT MONUMENT FOUND AS SHOWN
- ☁ BEARING TREE AS NOTED
- ☁ GENERAL LAND OFFICE
- ☁ BEARING TREE STUMP AS NOTED
- ⊕ ROOT HOLD OF DOWN GLO BEARING TREE
- 3 1/4" ALUMINUM DISK NW 1. FOSTER DLC 62 SEE RESTORATION NO. 126862040
- 3 1/4" BRASS DISK NE S. WHITE DLC 61 SEE RESTORATION NO. 126861010

NEW ACCESSORIES:

1. SET REBAR (SEE LEGEND) N64°24'E, 28.15 FEET, 10" BELOW GROUND LEVEL.
2. SET REBAR (SEE LEGEND) S79°00'W, 14.41 FEET, 10" BELOW GROUND LEVEL.
3. FACE SCRIBED 31" D. FIR, N4°26'W, 38.66 FEET TO FACE (40.1 FEET TO CENTER). MARKED "T12SR6WS26BT." SET ALUMINUM NAIL AND PLASTIC WASHER BELOW SCRIBING FOR DISTANCE AND ANGLE MEASUREMENT.
4. FACE SCRIBED 9" D. FIR, S13°27'E, 35.75 FEET TO FACE (36.1 FEET TO CENTER). MARKED "XBT". SET ALUMINUM NAIL AND PLASTIC WASHER BELOW SCRIBING FOR DISTANCE AND ANGLE MEASUREMENT.

NOTES:

COMPASS DECLINATION IS 20' EAST. ALL MEASURED DISTANCES AND BEARINGS ARE TO THE CENTER OF THE OBJECT, UNLESS OTHERWISE NOTED. ALL BEARING TREES ARE PAINTED AND HAVE A B.T. TAG ATTACHED, FACING THE CORNER UNLESS OTHERWISE NOTED. ALL NEW BEARING TREES HAVE A PLASTIC WASHER (STAMPED "SURVEYOR MARKER DO NOT REMOVE") ATTACHED BY AN ALUMINUM NAIL TO THE FACE. BELOW THE "BT" FOR DISTANCE AND ANGLE MEASUREMENT UNLESS OTHERWISE NOTED. THE DRAWING IS FROM AUTOCAD RELEASE 2008.

THIS RESTORATION WAS PERFORMED AT THE DIRECTION AND APPROVAL OF THE BENTON COUNTY SURVEYOR *RWS*

FIRM/AGENCY: BENTON COUNTY SURVEYOR'S OFFICE
 ADDRESS: 360 S.W. AVERY AVE. CORVALLIS, OR. 97333; PH. 766-6821
 PRESENT: RAYMOND E. WILSON, C.S./P.L.S. AND DAVID M. DEAN, P.L.S.
 EQUIPMENT: LEICA TCR 1105 TOTAL STATION W/TDS ONBOARD.

REGISTERED
PROFESSIONAL
LAND SURVEYOR

Raymond E. Wilson
 OREGON
 JULY 18, 1980
 RAYMOND E. WILSON
 1924

RENEWAL DATE: 06/30/10