

CORNER FILE TRACKING

H:\Survey\Corners\Misc\Filetrac.doc

11/23/98

CORNER NUMBER
126841030

STEP	HISTORY()	RESTORATION()
Form Prepared, DB	3/31/03	3/31/03
Field Inspection, DB	3/31/03	3/31/03
Form Checked, DB	4/9/03	4/9/03
Form Edited, DB	4/11/03	4/11/03
Form Signed, DB	4/11/03	4/11/03
Authorize Payment, DB	—	—
Archive Digital Files	4/21/03	4/21/03
Collect Documents	4/21/03	4/21/03
Scanned	4/21/03	4/21/03
Copy For Filming		
Filed, DB		
Finish index (count unit)		
Filmed (Archived), DB		

(DB) = Entry needed in database (Access).

COMMENTS:

DATE 03/31/2003TOWNSHIP 12 SOUTH, RANGE 06 WEST, WILLAMETTE MERIDIAN; SECTION 36 CORNER NONE
DONATION LAND CLAIM JAMES H. MORRIS NO. 41 CORNER INTERIOR SE**COMMON CORNER(S):**

NW JACOB MARTIN D.L.C. NO. 42

RECORDS (INFORMATION IN *BOLD ITALICS* IS COUNTY STAFFS' INTERPRETATION OF THE RECORD)

BASED ON EXTENSIVE RESEARCH AND RECOVERY OF EVIDENCE, THIS OFFICE HAS DETERMINED THAT MOST GENERAL LAND OFFICE SURVEYORS MEASURED TO THE FACE OF BEARING TREES.

- [01] GENERAL LAND OFFICE (GLO) NOTES OF THE JACOB MARTIN DONATION LAND CLAIM (DLC) NO. 42 BY DENNIS HATHORN, D.S., DATED JANUARY 24, 1855. *SET POST FOR NW CORNER, DEPOSITED CHARRED STAKE AND DUG TRENCH.*
- [02] GENERAL LAND OFFICE (GLO) NOTES OF THE JAMES H. MORRIS DLC NO. 41 BY DENNIS HATHORN, D.S., DATED JANUARY 13, 1854. *JACOB MARTIN'S NW CORNER.*
- [03] OLD COUNTY SURVEY NO. 289 FIELD NOTES (FIELD BOOK 59, PAGE 4) BY W. W. LARSEN, D.C.S., DATED NOVEMBER 30, 1929. *TRAVERSED NORTH FROM SW CORNER OF JACOB MARTIN DLC NO. 42 AND HIT 0.151 SOUTH AND 0.260 EAST OF CORNER. SET OAK STAKE WITH 8" CRAB APPLE, S87°W, 0.236 CH (15.58 FEET) AND ANCHOR POST S40°W, 0.04 CH (2.64 FEET).*
- [04] BENTON COUNTY RESTORATION BOOK NO. 1, PAGE 190 BY W. W. LARSEN, D.C.S., DATED 1929. *SET OAK STAKE AND 1/2" X 1" ROD FROM WHICH A CRAB APPLE 8" IN DIAMETER BEARS S87°W, 0.236 CHS AND ANCHOR POST BEARS S40°W, 0.04 CHS.*
- [05] BENTON COUNTY CORNER RESTORATION NO. 1332. *TRANSCRIBED COPY OF RECORD [04] AND MAY CONTAIN ERRORS AND/OR OMISSIONS.*
- [06] BENTON COUNTY MAP NO. 12-5-00046 BY BENTON COUNTY, NO DATE GIVEN. *SIMILAR INFORMATION AS RECORD [04].*
- [07] COUNTY SURVEY NO. 2173 BY OTTO H. MEYER, P.E., DATED FEBRUARY 18, 1950. *IRON BAR IN PLACE.*
- [08] COUNTY SURVEY NO. 4214 BY FRED LEMKE, P.L.S., DATED DECEMBER 20, 1965. *1/2" X 1" ROD.*
- [09] COUNTY SURVEY NO. 4682 BY FRED LEMKE, P.L.S., DATED DECEMBER 21, 1968. *1/2" X 1" ROD.*
- [10] COUNTY SURVEY NO. 6134 BY FRED LEMKE, P.L.S., DATED AUGUST 10, 1976. *FOUND 1" X 1/2" IRON BAR WITH 1/2" X 6" LONG COUPLING FROM WHICH 12" CRAB APPLE BEARS S87°W, 15.6 FEET.*
- [11] COUNTY SURVEY NO. 7648 BY THEODORE LANGTON, P.L.S., DATED MAY 9, 1984. *NW CORNER JACOB MARTIN DLC 65, 1/2" PIPE.*
- [12] COUNTY SURVEY NO. 8049 BY THEODORE LANGTON, P.L.S., DATED AUGUST 12, 1987. *NW CORNER MARTIN DLC 65, 1/2" PIPE.*
- [13] COUNTY SURVEY NO. 8073 BY THEODORE LANGTON, P.L.S., DATED NOVEMBER 17, 1987. *NW CORNER JACOB MARTIN DLC 42, 1/2" X 1" IRON ROD.*
- [14] COUNTY SURVEY NO. 9690 BY DAVID MALONE, P.L.S., DATED OCTOBER 31, 2001. *NW CORNER JACOB MARTIN NO. 42, FOUND 1" X 1/2" IRON BAR WITH 3" COUPLING.*

NOTES:

THIS IS A MICROSOFT WORD 2000 DOCUMENT NAMED "26841030" CREATED FROM A BOILER PLATE DOCUMENT NAMED "HISTORY", WHICH HAS A STYLESHEET NAMED "CORNER" ATTACHED TO IT.

FIRM/AGENCY: BENTON COUNTY SURVEYOR'S OFFICE
ADDRESS: 360 S.W. AVERY AVE. CORVALLIS OR 97333; PH. 766-6821
RESEARCH BY: DAVID M. DEAN, P.L.S.
DATA ENTRY BY: DEAN

SEE CORNER HISTORY FORM FOR RECORDS ETC.

CORNER RESTORATION FIELD BOOK NUMBER 21 PAGE(S) 18 DATE 03/31/2003
TOWNSHIP 12 SOUTH, RANGE 6 WEST, WILLAMETTE MERIDIAN; SECTION 36 CORNER NONE
DONATION LAND CLAIM JAMES H. MORRIS NO. 41 CORNER INTERIOR SE
CONDITION REPORT ; REFERENCED OUT ; RENEWED XX; SURVEYED IN

LOCATION AND COMMENTS:

CORNER IS LOCATED ON A GENTLE SOUTH SLOPE IN AN AREA OF HEAVY BRIERS, BRUSH AND SCATTERED HARDWOODS, 10 FEET WEST OF A DEEPLY SCoured SMALL CREEK. TO REACH CORNER FROM THE JUNCTION OF BELLFOUNTAIN AND AIRPORT ROAD, TRAVEL WESTERLY ON AIRPORT ROAD FOR 0.91 MILES TO DRIVEWAY FOR 25512 SW AIRPORT AVE.; THEN SOUTH ON DRIVEWAY FOR 0.21 MILES TO RESIDENCE AND PARK; THEN WALK SOUTH SOUTHEASTERLY ON DIRT ROAD FOR ±1000 FEET TO LOCATION TAG ON 14" ASH; THEN S12 1/2°E, 240 FEET TO CORNER. CORNER IS POOR FOR PREMARKING AND GPS CONTROL.

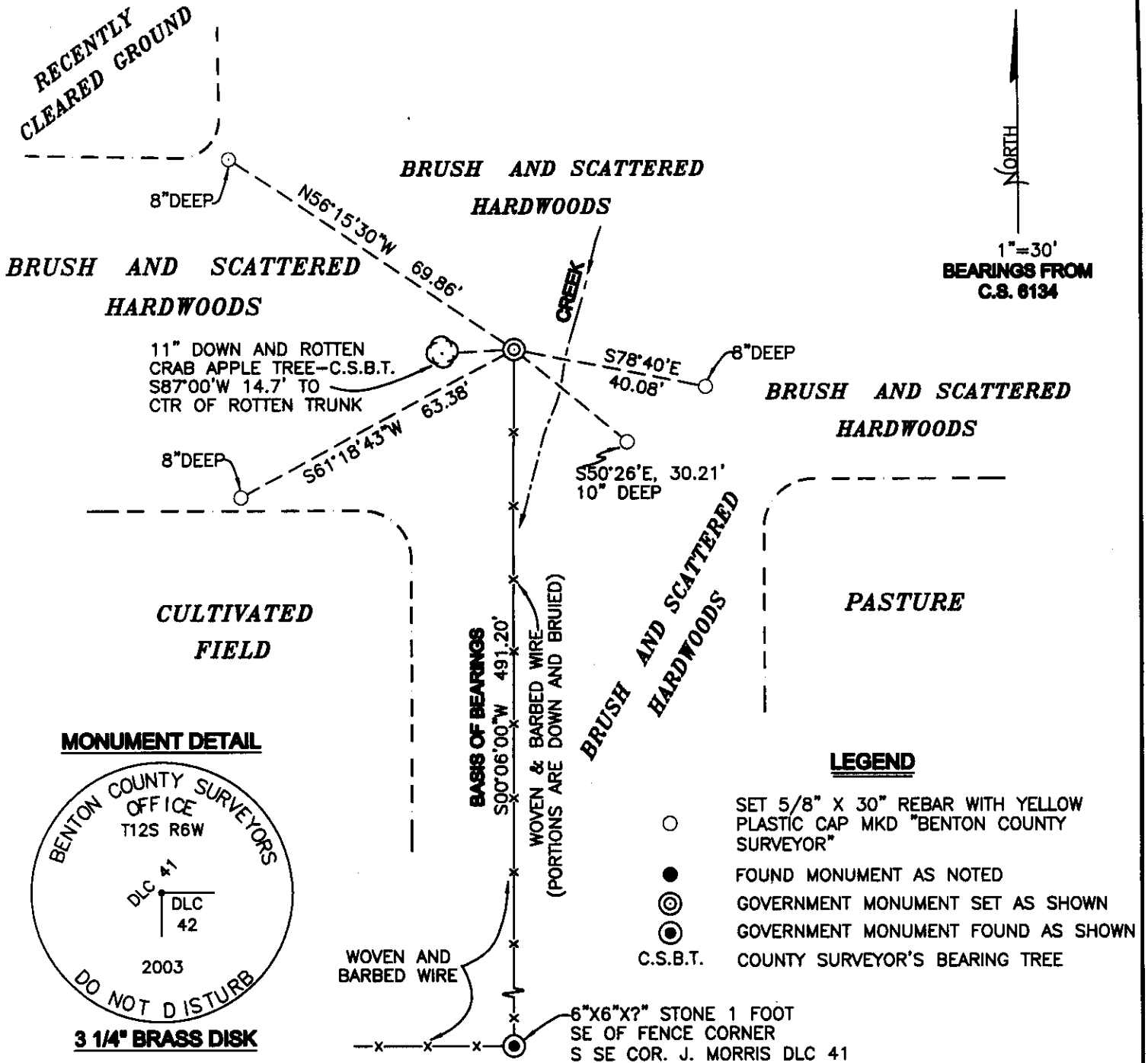
MONUMENTS AND ACCESSORIES FOUND (CONDITION AND SOURCE):

1. FOUND 1/2" X 1" X 39" IRON BAR WITH A 1/2" X 3" COUPLING ON TOP, 13" ABOVE GROUND LEVEL FOR CORNER POSITION.
(SET 1/2" X 1" ROD PER RECORD [04]).
(1/2" X 1" ROD PER RECORD [06], [08] - [09] AND [13]).
(IRON BAR IN PLACE PER RECORD [07]).
(1/2" X 1" IRON BAR WITH 1/2" X 6" COUPLING PER RECORD [10]).
(1/2" PIPE PER RECORDS [11] AND [12]).
(1/2" X 1" IRON BAR WITH 3" COUPLING PER RECORD [14]).
2. FOUND 6" X 6" X ?" GRANITE STONE AT THE SOUTH SOUTHEAST CORNER OF THE JAMES H. MORRIS DLC NO. 41, S00°06'00"W, 491.20 FEET (**BASIS OF BEARINGS FOR THIS RESTORATION**). STONE IS 2" BELOW GROUND LEVEL AND 1 FOOT SE OF FENCE CORNER POST WITH FENCES BEARING NORTH/SOUTH AND WEST.
(SOUTH, 483.78 FEET PER RECORDS [01] AND [02]).
(S0°06'W, 491.14 FEET PER RECORD [10]).
3. FOUND 12" DOWN AND ROTTEN CRAB APPLE, A COUNTY SURVEYOR'S BEARING TREE (C.S.B.T.), S87°00'W, 14.7 FEET TO CENTER OF ROTTEN TRUNK.
(8" CRAB APPLE, S87°W, 15.58 FEET PER RECORDS [03], [04] AND [06])
(12" CRAB APPLE, S87°W, 15.6 FEET PER RECORD [10]).

MONUMENT SET (PROCEDURES AND DESCRIPTION):

NO EVIDENCE REMAINS OF THE GLO MONUMENT (POST) OR "OAK STAKE" SET BY W. W. LARSEN, D.C.S., IN OLD COUNTY SURVEY NO. 289 (RECORD [03]). LARSEN DID NOT SAY WHAT EVIDENCE WAS FOUND TO REESTABLISH THIS CORNER. HOWEVER, IT IS APPARENT FROM LARSEN'S FIELD NOTES, THAT SOME EVIDENCE WAS RECOVERED, BASED ON HIS FALLING TO CORNER FROM A RANDOM TRAVERSE POINT. BASED ON THE Pervasiveness OF THIS EVIDENCE AND THE GLO DISTANCE AGREEMENT TO THE NORTHEAST CORNER OF THE ISAAC FOSTER DLC NO. 62, WE HAVE HELD THE 1/2" X 1" IRON BAR PER RECORD [04] FOR THE TRUE CORNER POSITION.

REMOVED THE IRON BAR AND SET A 2" X 36" GALVANIZED IRON PIPE WITH A 3 1/4" BRASS DISK CEMENTED IN THE TOP, 4" ABOVE GROUND LEVEL, MARKED AS SHOWN ON PAGE 2 OF 2. RESET THE IRON BAR ON THE SOUTH SIDE OF NEW MONUMENT, 6" BELOW GROUND LEVEL. SET 6 FOOT ORANGE CARSONITE "SURVEY MARKER" POST 1 FOOT EAST OF CORNER. REFERENCE AS SHOWN ON PAGE 2 OF 2, THIS REPORT.



NEW ACCESSORIES:

1. SET REBAR (SEE LEGEND) 8" BELOW GROUND LEVEL, S78°40'E, 40.08 FEET.
2. SET REBAR (SEE LEGEND) 10" BELOW GROUND LEVEL, S50°26'E, 30.21 FEET.
3. SET REBAR (SEE LEGEND) 10" BELOW GROUND LEVEL, S61°18'42"W, 63.38 FEET.
4. SET REBAR (SEE LEGEND) 8" BELOW GROUND LEVEL, N56°15'29"W, 69.86 FEET.

NOTES:

COMPASS DECLINATION IS 20° EAST. ALL MEASURED DISTANCES AND BEARINGS ARE TO THE CENTER OF THE OBJECT, UNLESS OTHERWISE NOTED. ALL BEARING TREES ARE PAINTED AND HAVE A B.T. TAG ATTACHED, FACING THE CORNER UNLESS OTHERWISE NOTED. ALL NEW BEARING TREES HAVE A PLASTIC WASHER (STAMPED "BENTON COUNTY SURVEYOR CORNER RESTORATION") ATTACHED (BY ALUMINUM NAIL) TO THE FACE, BELOW THE "BT" FOR DISTANCE AND ANGLE MEASUREMENT UNLESS OTHERWISE NOTED. THE DRAWING IS FROM AUTOCAD RELEASE 2002.

THIS RESTORATION WAS PERFORMED AT THE DIRECTION AND APPROVAL OF THE BENTON COUNTY SURVEYOR, RW

FIRM/AGENCY: BENTON COUNTY SURVEYOR'S OFFICE
ADDRESS: 360 S.W. AVERY AVE. CORVALLIS OR 97333; PH. 766-6821
PRESENT: DAVID M. DEAN, P.L.S. AND BERNIE ALTENBACK, SURVEY TECH.

REGISTERED
 PROFESSIONAL
 LAND SURVEYOR
David M. Dean 4/11/05
 OREGON
 JULY 13, 1984
 DAVID M. DEAN
 2090

RENEWAL DATE: 12/31/03

1929

W. W. G.

Witness

Hughes

Syd. Kohn

"



"

1930

W. W. G.

Rex Clemens

(4)

N. E. Corner of Jacob Martin Ch. 66, T. 12 S. R. 6 W.
Found Set Stone 8" x 8" x 14" from which an

Oak 36" in diameter bears N. 7 1/2° E. 1.02 obs

Oak 10" " " N. 85° E. .29 "

" 30" " " S. 84° E. .25 "

Ash 8" " " North .06

N. W. Corner of Jacob Martin Ch. 66, T. 12 S. R. 6 W.

Set Oak Stake 1/2" dia from which a ¹⁵⁵⁹ ~~stone~~

Crab apple 8" in diameter bears S. 81° W. ²⁶⁴ .236 obs

Anchor Post " " " 540° W. .04 "

S. W. corner of Bushrod Wilson Ch. 64, T. 12 S. R. 6 W.

Set 1" Rod east of fence for

See recorded plat

1/4 Cor. on N. of Sec. 17, T. 12 S. R. 6 W.

Stake -- Stone 6" x 12" x 14" C.S.

Fir 10" in diameter bears S. 55° E. .27 obs

" 16" " " N. 23° E. .185 "

Oak 8" " " N. 83° W. .5 "

" 8" " " S. 70° W. .5 "

N. W. Cor. Sec 17, T. 12 S. R. 6 W.

N. W. corner of Jacob Martin Cl 66, Twp. 12 S., R. ~~5~~⁶ W.

1332

Reestablishment by W. C. Galloway

Septmeber 1929

Set Oak stake and $\frac{1}{2}$ " x 1" rod

Crab Apple 8" in diam bears S 87° W

.236 chains

Anchor Post bears S 40° W

.04 chains

Witness Mr. Hughes and Syd Klohn

CORNER HISTORY		T 12 S, R 6 W		SECTION 36	CORNER	
				D.L.C. JAMES H. MORRIS NO. 41	CORNER INT-SE	
				MONUMENTS AND ACCESSORIES		#
						841030
NO.	DATE	SOURCE	SURVEYOR	COMMENTS		
1	1850	DRIS. 234	DENNIS HATHORN	1/4 Post. OFF. SW. 1/4, SW. 1/4, SW. 1/4, SW. 1/4		1
2	1850	DRIS. 234	DENNIS HATHORN	1/4 Post. OFF. SW. 1/4, SW. 1/4, SW. 1/4, SW. 1/4		2
3	1850	DRIS. 234	DENNIS HATHORN	1/4 Post. OFF. SW. 1/4, SW. 1/4, SW. 1/4, SW. 1/4		3
4	1850	DRIS. 234	DENNIS HATHORN	1/4 Post. OFF. SW. 1/4, SW. 1/4, SW. 1/4, SW. 1/4		4
5	1850	DRIS. 234	DENNIS HATHORN	1/4 Post. OFF. SW. 1/4, SW. 1/4, SW. 1/4, SW. 1/4		5
6	1850	DRIS. 234	DENNIS HATHORN	1/4 Post. OFF. SW. 1/4, SW. 1/4, SW. 1/4, SW. 1/4		6
7	1850	DRIS. 234	DENNIS HATHORN	1/4 Post. OFF. SW. 1/4, SW. 1/4, SW. 1/4, SW. 1/4		7
8	1850	DRIS. 234	DENNIS HATHORN	1/4 Post. OFF. SW. 1/4, SW. 1/4, SW. 1/4, SW. 1/4		8
9	1850	DRIS. 234	DENNIS HATHORN	1/4 Post. OFF. SW. 1/4, SW. 1/4, SW. 1/4, SW. 1/4		9
10	1850	DRIS. 234	DENNIS HATHORN	1/4 Post. OFF. SW. 1/4, SW. 1/4, SW. 1/4, SW. 1/4		10
11	1850	DRIS. 234	DENNIS HATHORN	1/4 Post. OFF. SW. 1/4, SW. 1/4, SW. 1/4, SW. 1/4		11
12	1850	DRIS. 234	DENNIS HATHORN	1/4 Post. OFF. SW. 1/4, SW. 1/4, SW. 1/4, SW. 1/4		12
13	1850	DRIS. 234	DENNIS HATHORN	1/4 Post. OFF. SW. 1/4, SW. 1/4, SW. 1/4, SW. 1/4		13
14	1850	DRIS. 234	DENNIS HATHORN	1/4 Post. OFF. SW. 1/4, SW. 1/4, SW. 1/4, SW. 1/4		14
15	1850	DRIS. 234	DENNIS HATHORN	1/4 Post. OFF. SW. 1/4, SW. 1/4, SW. 1/4, SW. 1/4		15
16	1850	DRIS. 234	DENNIS HATHORN	1/4 Post. OFF. SW. 1/4, SW. 1/4, SW. 1/4, SW. 1/4		16
17	1850	DRIS. 234	DENNIS HATHORN	1/4 Post. OFF. SW. 1/4, SW. 1/4, SW. 1/4, SW. 1/4		17
18	1850	DRIS. 234	DENNIS HATHORN	1/4 Post. OFF. SW. 1/4, SW. 1/4, SW. 1/4, SW. 1/4		18
19	1850	DRIS. 234	DENNIS HATHORN	1/4 Post. OFF. SW. 1/4, SW. 1/4, SW. 1/4, SW. 1/4		19
20	1850	DRIS. 234	DENNIS HATHORN	1/4 Post. OFF. SW. 1/4, SW. 1/4, SW. 1/4, SW. 1/4		20
21	1850	DRIS. 234	DENNIS HATHORN	1/4 Post. OFF. SW. 1/4, SW. 1/4, SW. 1/4, SW. 1/4		21
22	1850	DRIS. 234	DENNIS HATHORN	1/4 Post. OFF. SW. 1/4, SW. 1/4, SW. 1/4, SW. 1/4		22
23	1850	DRIS. 234	DENNIS HATHORN	1/4 Post. OFF. SW. 1/4, SW. 1/4, SW. 1/4, SW. 1/4		23
24	1850	DRIS. 234	DENNIS HATHORN	1/4 Post. OFF. SW. 1/4, SW. 1/4, SW. 1/4, SW. 1/4		24
25	1850	DRIS. 234	DENNIS HATHORN	1/4 Post. OFF. SW. 1/4, SW. 1/4, SW. 1/4, SW. 1/4		25
26	1850	DRIS. 234	DENNIS HATHORN	1/4 Post. OFF. SW. 1/4, SW. 1/4, SW. 1/4, SW. 1/4		26
27	1850	DRIS. 234	DENNIS HATHORN	1/4 Post. OFF. SW. 1/4, SW. 1/4, SW. 1/4, SW. 1/4		27
28	1850	DRIS. 234	DENNIS HATHORN	1/4 Post. OFF. SW. 1/4, SW. 1/4, SW. 1/4, SW. 1/4		28
29	1850	DRIS. 234	DENNIS HATHORN	1/4 Post. OFF. SW. 1/4, SW. 1/4, SW. 1/4, SW. 1/4		29
30	1850	DRIS. 234	DENNIS HATHORN	1/4 Post. OFF. SW. 1/4, SW. 1/4, SW. 1/4, SW. 1/4		30
31	1850	DRIS. 234	DENNIS HATHORN	1/4 Post. OFF. SW. 1/4, SW. 1/4, SW. 1/4, SW. 1/4		31

