

CORNER FILE TRACKING

H:\Survey\Corners\Misc\Filetrac.doc

11/23/98

CORNER NUMBER
126841060

STEP	HISTORY()	RESTORATION()
Form Prepared, DB	3/22/04	3/24/04
Field Inspection, DB	3/23/04	3/23/04
Form Checked, DB	4/1/04	4/1/04
Form Edited, DB	4/5/04	4/5/04
Form Signed, DB	4/5/04	4/5/04
Authorize Payment, DB	~	~
Archive Digital Files	4/14/04	4/14/04
Collect Documents	4/14/04	4/14/04
Scanned	4/21/04	4/21/04
Copy For Filming	4/14/04	4/14/04
Filed, DB		
Finish index (count unit)	3/23/04	3/23/04
Filmed (Archived), DB		

(DB) = Entry needed in database (Access).

COMMENTS:

DATE 03/22/2004TOWNSHIP 12 SOUTH, RANGE 06 WEST, WILLAMETTE MERIDIAN; SECTION 25 CORNER N/A
DONATION LAND CLAIM JAMES MORRIS NO. 41 CORNER NW**COMMON CORNER(S):**

NONE

RECORDS (INFORMATION IN *BOLD ITALICS* IS COUNTY STAFFS' INTERPRETATION OF THE RECORD)

BASED ON EXTENSIVE RESEARCH AND RECOVERY OF EVIDENCE, THIS OFFICE HAS DETERMINED THAT MOST GENERAL LAND OFFICE SURVEYORS MEASURED TO THE FACE OF BEARING TREES.

- [01] GENERAL LAND OFFICE (GLO) NOTES BY D. HATHORN, D.S., DATED JANUARY 24, 1855. SET A POST. MARKED A 12" OAK N2°E 13 LKS. (8.58 FT.) AND A 12" OAK S3°W 67 LKS. (44.22 FT.).
- [02] COUNTY SURVEY NO. 489 (OLD NO. 197) FIELD NOTES (FIELDBOOK 18, PAGE 36) BY W. C. GALLOWAY, C.S., DATED JANUARY 11, 1915. FOUND ONE OAK DOWN (GLO BT). SET A 3/4" PIPE. MARKED A 10" OAK S32°30'E 0.544 CHS. (35.90 FT.) AND A 14" OAK S31°30'W 0.282 CHS. (18.61 FT.).
- FROM MAP OF COUNTY SURVEY NO. 489. 3/4" PIPE.
- [03] CORNER RESTORATION BOOK NO. 1, PAGE 88 BY W. C. GALLOWAY, C.S., DATED JANUARY 14, 1915. FOUND ONE OAK DOWN (GLO BT) AND THE OTHER GONE. SET A 3/4" PIPE. MARKED A 10" OAK S32°30'E 0.544 CHS. (35.90 FT.) AND A 14" OAK S31°30'W 0.282 CHS. (18.61 FT.).
- [04] CORNER RESTORATION NO. 1490. TRANSCRIBED FROM RECORD [03] AND MAY CONTAIN ERRORS AND/OR OMISSIONS.
- [05] BENTON COUNTY MAP NO. 12-6-00031 BY W. C. GALLOWAY, C.S., DATED JANUARY 20, 1915. 3/4" PIPE. 10" OAK S32°30'E 0.544 CHS. (35.90 FT.). 14" OAK S31°30'W 0.282 CHS. (18.61 FT.).
- [06] BENTON COUNTY MAP NO. 12-6-00030 BY W. C. GALLOWAY, C.S., DATED JUNE 1934. 3/4" PIPE. 10" OAK S32°30'E, 0.544 CHS. (35.90 FT.). 14" OAK S31°30'W 0.282 CHS. (18.61 FT.).
- [07] COUNTY SURVEY NO. 1862 (OLD NO. 197) FIELD NOTES, BY C. HANSON, C.S., DATED JANUARY 27, 1947. 3/4" P.
- [08] COUNTY SURVEY NO. 2588 BY OTTO MEYER, P.E., DATED JUNE 6, 1954. FOUND 3/4" P. IN PLACE.
- [09] COUNTY SURVEY NO. 5274 BY FRED LEMKE, P.L.S., DATED MAY 9, 1972. FOUND 3/4" PIPE.
- [10] COUNTY SURVEY NO. 5573 BY MARTIN BEYERLEIN, P.L.S., DATED OCTOBER 26, 1973. FOUND 3/4" P.
- [11] COUNTY SURVEY NO. 8049 BY TED LANGTON, P.L.S., DATED AUGUST 12, 1987. FOUND 3/4" PIPE.

COMMENTS/LOCATION/ETC:**NOTES:**

THIS IS A MICROSOFT WORD 2000 DOCUMENT NAMED "26841060" CREATED FROM A BOILER PLATE DOCUMENT NAMED "HISTORY", WHICH HAS A STYLESHEET NAMED "CORNER" ATTACHED TO IT.

FIRM/AGENCY: BENTON COUNTY SURVEYOR'S OFFICE
ADDRESS: 360 S.W. AVERY AVE. CORVALLIS OR 97333; PH. 766-6821
RESEARCH BY: BERNARD S. ALTENBACH, ENGINEER/SURVEY TECH.
DATA ENTRY BY: BSA

BENTON COUNTY CORNER RESTORATION FORM, PAGE 1 OF 2, 126841060R2

SEE CORNER HISTORY FORM FOR RECORDS ETC.

CORNER RESTORATION FIELD BOOK NUMBER 22 PAGE(S) 13 DATE 03/23/2004
TOWNSHIP 12 SOUTH, RANGE 6 WEST, WILLAMETTE MERIDIAN; SECTION 25 CORNER NONE
DONATION LAND CLAIM JAMES H. MORRIS NO. 41 CORNER NW
CONDITION REPORT ; REFERENCED OUT ; RENEWED XX; SURVEYED IN

LOCATION AND COMMENTS:

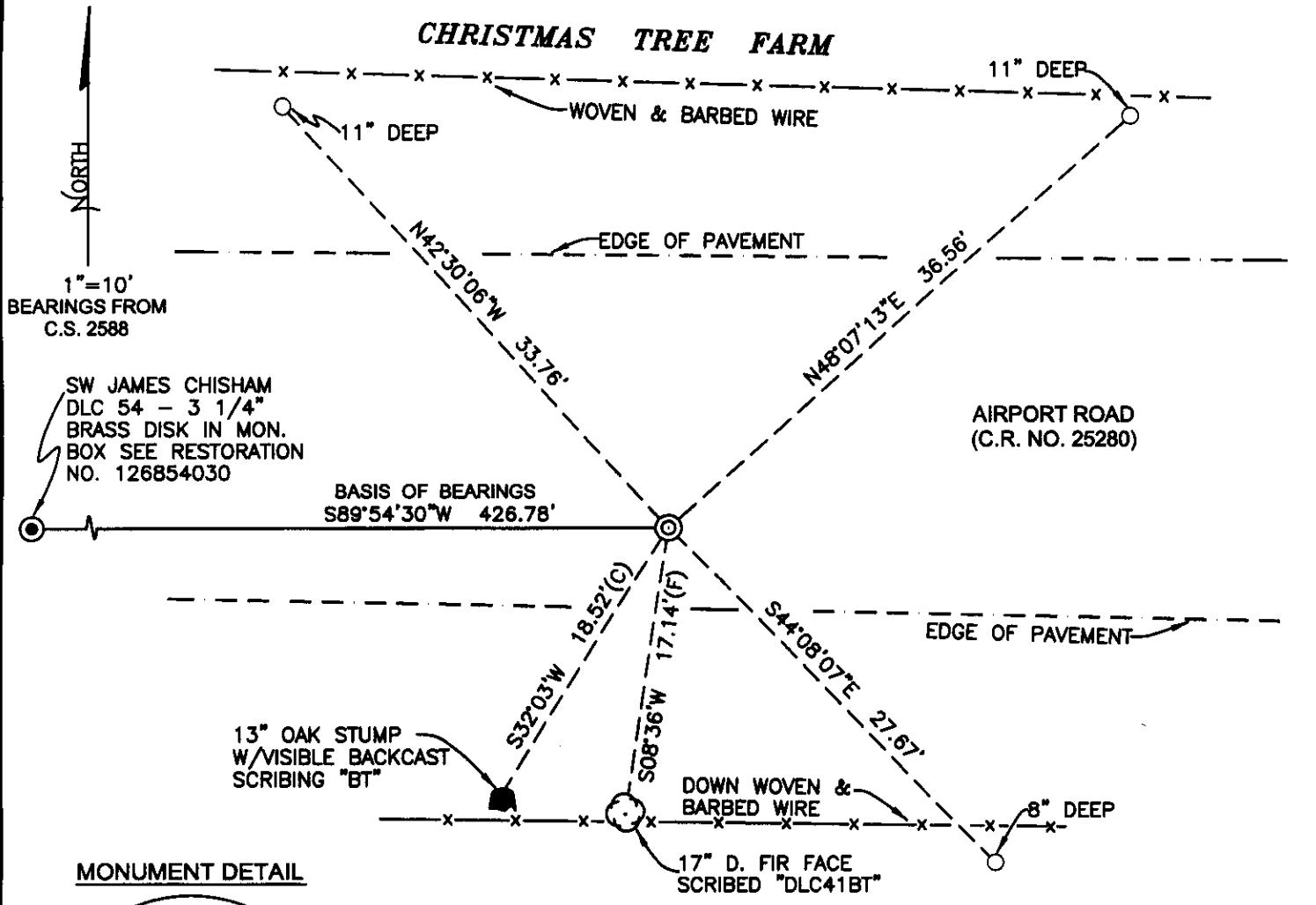
CORNER IS LOCATED IN THE EASTBOUND LAND OF AIRPORT ROAD (C.R. NO. 25280), 6 FEET SOUTH OF CENTERLINE. TO REACH CORNER FROM THE JUNCTION OF FERN ROAD AND AIRPORT ROAD, TRAVEL WESTERLY ON AIRPORT ROAD FOR 0.39 MILES TO CORNER. CORNER IS FAIR FOR PERMARKING AND GPS CONTROL (TALL CONIFER TREES TO THE SOUTH).

MONUMENTS AND ACCESSORIES FOUND (CONDITION AND SOURCE):

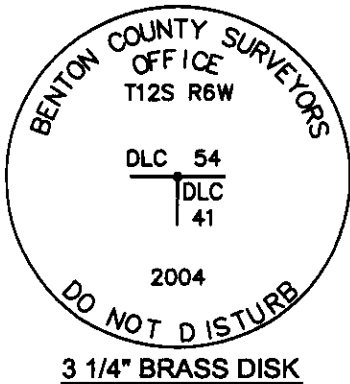
1. FOUND 3/4" RUSTY IRON PIPE 8" BELOW ROAD SURFACE FOR CORNER POSITION. TOP 10" OF PIPE WAS BENT 0.13' SOUTHERLY. CUT TOP 10" OFF PIPE.
(SET 3/4" PIPE FROM GLO EVIDENCE (BEARING TREE) PER RECORDS [02] AND [03]).
(FOUND 3/4" PIPE PER RECORDS [05] - [11]).
2. FOUND 13" OAK STUMP WITH VISIBLE BACKCASTING SCRIBING "BT", S32°03'W, 18.52 FEET TO CENTER. SET ALUMINUM NAIL AND PLASTIC WASHER IN WESTERLY BASE FOR DISTANCE MEASUREMENT.
(MARKED 14" OAK, S31°30'W, 18.61 FEET PER RECORDS [02] AND [03]).
(14" OAK, S31°30'W, 18.61 FEET PER RECORDS [05] AND [06]).
3. FOUND 3 1/4" BRASS DISK AT THE SOUTHWEST CORNER OF THE JAMES CHISHAM DLC. NO. 54, S89°54'30"W, 426.78 FEET.
(S89°53'W, 427.69 FEET PER RECORD [02], [05] AND [06]).
(S89°53'W, 496.90 FEET PER RECORD [07]).
(S89°54'30"W, 427.18 FEET PER RECORDS [08] AND [09]).
(S89°53'W, 426.96 FEET PER RECORD [10]).

MONUMENT SET (PROCEDURES AND DESCRIPTION):

FOUND 3/4" IRON PIPE, 8" BELOW ROAD SURFACE WITH THE TOP 10" BENT 0.13 FEET SOUTHERLY AS SET PER RECORD [02] FROM GLO EVIDENCE (BEARING TREE). HELD STRAIGHT PORTION FOR TRUE CORNER POSITION. CUT TOP 10" OFF SAID 3/4" IRON PIPE AND SET 2" X 31 1/2" GALVANIZED IRON PIPE WITH 3 1/4" BRASS DISK CONCRETED IN THE TOP, OVER REMAINING SECTION OF 3/4" IRON PIPE. SET A 10" DIAMETER MONUMENT BOX WITH BOTTOM FLANGE OVER NEW MONUMENT. BRASS DISK IS 5" BELOW ROAD SURFACE AND MARKED AS SHOWN ON PAGE 2 OF 2. REMOVED TOP 10" OF THE 3/4" IRON PIPE FROM THE AREA.



MONUMENT DETAIL



D. FIR TIMBER

LEGEND

- SET 5/8" X 30" REBAR WITH YELLOW PLASTIC CAP MKD "BENTON COUNTY SURVEYOR"
- (F) MEASUREMENT TO FACE
- (C) MEASUREMENT TO CENTER
- ⊙ GOVERNMENT MONUMENT SET AS SHOWN
- ⊙ GOVERNMENT MONUMENT FOUND AS SHOWN
- ⊙ BEARING TREE AS NOTED
- C.S.B.T. COUNTY SURVEYORS BEARING TREE
- GLO GENERAL LAND OFFICE

NEW ACCESSORIES:

1. SET REBAR (SEE LEGEND) 11" BELOW GROUND LEVEL, N42°30'W, 33.76 FEET AND 2 FEET SOUTH OF AN EAST/WEST WOVEN AND BARBED WIRE FENCE.
2. SET REBAR (SEE LEGEND) 11" BELOW GROUND LEVEL, N48°07'E, 36.56 FEET AND 1 FOOT SOUTH OF AN EAST/WEST WOVEN AND BARBED WIRE FENCE.
3. SET REBAR (SEE LEGEND) 8" BELOW GROUND LEVEL, S44°08'E, 27.67 FEET AND 2.2 FEET SOUTH OF A MOSTLY DOWN WOVEN AND BARBED WIRE FENCE.
4. FACE SCRIBED A 17" D. FIR, S8°36'W, 17.14 FEET TO FACE AND SCRIBED "DLC41BT". SET ALUMINUM NAIL AND PLASTIC WASHER IN BOTTOM OF BLAZE BELOW SCRIBING FOR ANGLE AND DISTANCE MEASUREMENT.

NOTES:

COMPASS DECLINATION IS 20' EAST. ALL MEASURED DISTANCES AND BEARINGS ARE TO THE CENTER OF THE OBJECT, UNLESS OTHERWISE NOTED. ALL BEARING TREES ARE PAINTED AND HAVE A B.T. TAG ATTACHED, FACING THE CORNER UNLESS OTHERWISE NOTED. ALL NEW BEARING TREES HAVE A PLASTIC WASHER (STAMPED "BENTON COUNTY SURVEYOR CORNER RESTORATION") ATTACHED (BY ALUMINUM NAIL) TO THE FACE, BELOW THE "BT" FOR DISTANCE AND ANGLE MEASUREMENT UNLESS OTHERWISE NOTED. THE DRAWING IS FROM AUTOCAD RELEASE 2002.

THIS RESTORATION WAS PERFORMED AT THE DIRECTION AND APPROVAL OF THE BENTON COUNTY SURVEYOR, RLD

REGISTERED
PROFESSIONAL
LAND SURVEYOR

4/5/04 *David M. Dean*

FIRM/AGENCY: BENTON COUNTY SURVEYOR'S OFFICE
ADDRESS: 360 S.W. AVERY AVE. CORVALLIS OR 97333; PH. 766-6821
PRESENT: DAVID M. DEAN, P.L.S. AND BERNIE ALTENBACH SURVEY TECH.

OREGON
JULY 13, 1984
DAVID M. DEAN
2090

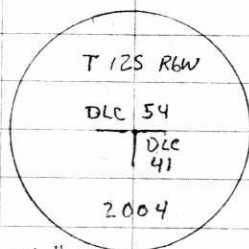
RENEWAL DATE: 12/31/05

126841060

REMANUMENTING NW J.H. MORRIS DLC 41

T12S R6W

Fd 3/4" I.P. 7" t IN AIRPORT ROAD w/ TOP
 10" BENT 0.13 S'WLY. Fd SW CSBT
 now 13" OAK Buckskin STUMP w/ REVERSE
 SCRIBING "BT": GLO BT'S AND SE
 CSBT MISSING. Brake OFF TOP 10" OF
 3/4" I.P. AND SET 2" x 3 1/2" GIP OVER
 3/4" I.P. w/ 3/4" BRASS DISK CONC. IN
 TOP 5" BELOW ROAD SURFACE MKD AS
 SHOWN. SET 10" DIA MON. BOX OVER NEW
 MONUMENT.

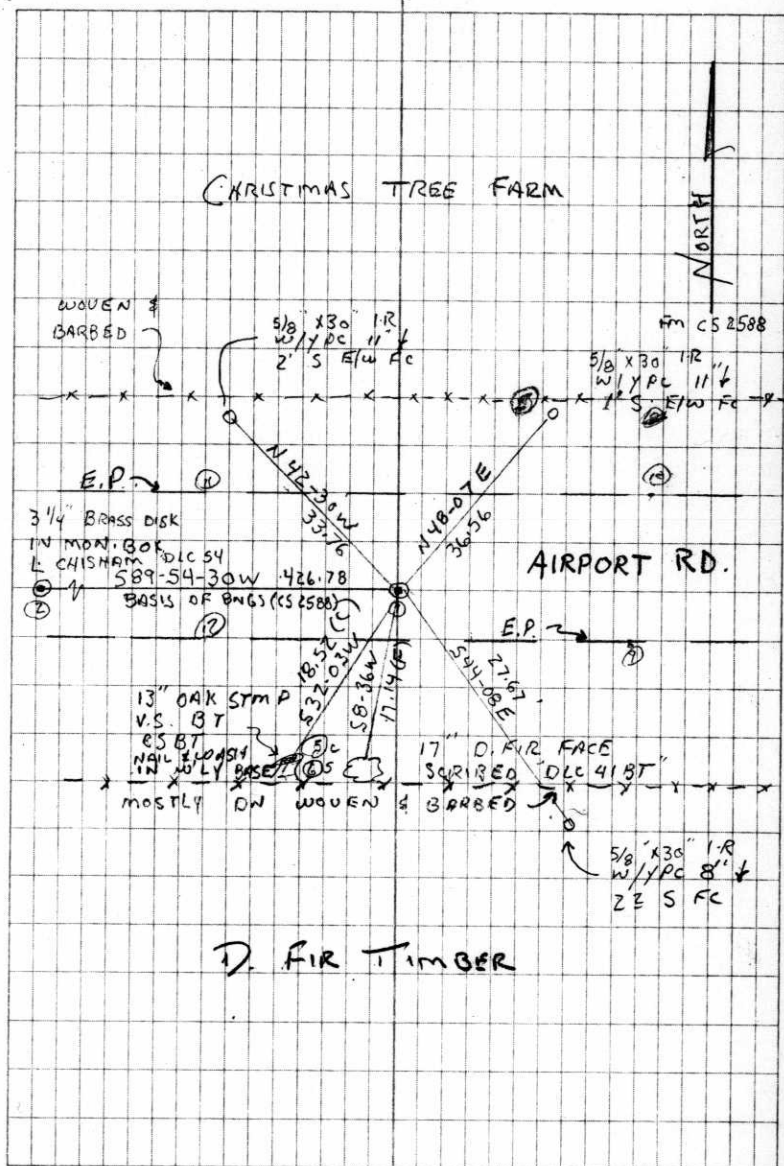


3 1/4" BRASS DISK

C'LDY, MILD
 61°F, 28.8" Hg
 LEICA TC1105/TDS

3/23/04
 D. DEAN
 B. ALTENBACH

22/13



- C.S. # 196 SW cor of Hiram Wood's D.L.C. # 68 T. 12 S. R. 6 W.
 Set stone ¹² at base of pipe Both trees gone
 Fir 12" bears N. 32° W. 150 chs.
 Oak 6" bears N. 69° 50' E. 573 chs.
 Witnesses L.H. Houley, John Hiller
- C.S. # 197 N.W. of M.H. Walker D.L.C. # 64 T. 12 S. R. 6 W.
 Set $\frac{3}{4}$ " pipe hole like stake hole
 Oak 20" bears S 12° E. 162 chs. std.
 " 15" " S. 1° W. 142 " "
 Witnesses J.B. ^{Arrants}, C.H. H.L. Peterson & P.S. Buntin Jan. 12, 1915.
- " NE. cor. of M.H. Walker D.L.C. # 64 T. 12 S. R. 6 W.
 Set a sandstone 7" x 9" x 12" orig. cor.
 Oak 10" bears N. 50° 30' E. 52 chs. std.
 " 18" " S. 65° W. 61 " "
 Witnesses J.B. & F.A. Arrants & P.S. Buntin Jan. 12, 1915.
- " S.W. corner of J.H. Morris D.L.C. # 41 T. 12 S. R. 6 W.
 Set stone 6" x 6" x 12" orig. cor. one stump
 Oak 9" bears N. 35° E. 84 chs. std.
 " 9" " S. 50° E. 449 "
 Witnesses J.B. & F.A. Arrants & P.S. Buntin Jan. 12, 1915.
- " N.W. cor. of J.H. Morris D.L.C. # 41 T. 12 S. R. 6 W.
 Set $\frac{3}{4}$ " pipe one oak down other gone
 Oak 10" bears S. 32° 30' E. 544 chs.
 " 14" " S. 31° 30' W. 282 "
 Witnesses J.B. & F.A. Arrants & P.S. Buntin Jan. 14, 1915.
- " S.W. cor. of James M. Chisham D.L.C. # 54 T. 12 S. R. 6 W.
 Set $\frac{3}{4}$ " pipe
 Oak stump 20" bears N. 81° E. 413 chs. std.
 " 24" " S. 54° 20' E. 284 " "
 Witnesses J.B. & F.A. Arrants & P.S. Buntin Jan. 14, 1915.
- " S.E. corner of Colbert P. Blair D.L.C. # 57 T. 12 S. R. 6 W.
 Set a $\frac{3}{4}$ " pipe
 Oak 36" bears S. 54° W. 22 chs. std.
 " 12" " N. 20° W. 43 " "
 Witnesses J.B. ^{Arrants} & P.S. Buntin Jan. 14, 1915.

N. W. corner of J. H. Morris DLC 41, Twp. 12 S R 6 W

1490

Reestablishment by W. C. Galloway

January 14, 1915

Set $\frac{3}{4}$ " pipe, One Oak down, other gone

Oak 10" in diam bears S 32° 30' E

.544 chains

Oak 14" in diam bears S 31° 30' W

.282 chains

Witnesses J. B. and F. A. Arrants and P. S. Bontin