

C.S. 113  
W.C. Galloway  
Albert Shriber  
G.H. Bath  
July 27 1911.

N.W. corner of Wm. Matzger D.L.C. 50 T 12-6  
Original oak tree 36" for corner, which checks from witness trees  
Oak 12" in dia. bears S. 40° E. 94 chs. std.  
" 30" " " N. 85° W. 1.91 " "

North Exterior corner of Wm Matzger D.L.C. 50 T 12-6  
Original stone 12"x14"x? Marked C 50  
Oak 24" in dia. bears S. 85° E. 2.22 chs. Quat. tree.

C.S. 76  
Witness W.C. Galloway Dec.  
J.W. Dodge  
T.A. Logsdon  
Oct. 1910.

S.W. corner of T.M. Reed D.L.C. 61 T. 11-5  
Set a Stone for corner. Set by proportion, fence lines etc.  
A pipe on west claim line North 7.76 chs.  
A 3/4" under stone on S. claim line S 89° 51' E. 10.978 chs. From this pipe  
4 feet to 15° S. 37° 20' W. 462 chs.

C.S. #138  
F. Marion Wilkes Dec.  
Sept. 1913.  
J. Roy Rickard

N.W. corner of Mark Cahoon D.L.C. 58 T 10-4  
Set 4"x4"x30" heart oak stake wk'd. C.S.  
Oak 24" in dia. bears S. 83° E. 945 chs. & of P.T. for line Orig. tree  
" 14" " " N 74 1/2° W. 1.21 " " " " " "

Resurvey Road 166  
W.C. Galloway c.s.  
June 1916  
John Sheasman  
Archib. Parkin.

The Most South corner of John T. Fortson D.L.C. 57 T 14-6  
Stone 18"x10"x12"  
Oak 15" in dia. bears N. 55° W. .33 chs. std.  
" 18" " " S. 33° E 1.95 " " (353 to cor. of tree taken out  
Set 18" pipe N. 50° E. 303  
" 18" iron S. 50° W. 304  
Fir 3" S. 33° W. 1.37  
Oak 12" S. 30° W. 1.092 " "

C.S. #149  
J.A. Goung  
Apr. 25, 1912  
Bristow ?

N.W. corner of H.C. Buckingham D.L.C. 53 T 14-6  
Set a stone 18"x18"x24" Orig. stone, S.W. cor. of Orrin Balknap Ch. referenced with pipe  
and iron  
Oak 24" in dia. bears N. 18° E. 1.58 chs. std. S.W. stump (see next page for  
" 24" " " S. 85° 10' E. 650 " Oak out for road cor. 12.34 E.

S.E. of J.W. Starr D.L.C. 54 T. 14-6  
Orig. stone 6"x6"x24"  
Oak 17" in dia. bears S. 17° W. 2.143 chs.  
" 34" " " S. 60 3/4° W. 3.512 "

N.E. corner of J.W. Starr D.L.C. 54 T. 14-6  
Set 5"x5"x36" oak stake Both stumps std.  
Oak 20" in dia. bears N. 57° 40' E. 486 chs.  
Fir 30" " " S. 38° 25' E. 408 "

Most E. N.E. cor. of Geo. Smith D.L.C. 63 T. 14-6  
Stone 26"x17"x14"  
Ash 12" in dia. bears N. 26° 25' E. 490 chs.

Interior corner of Geo. Smith D.L.C. 63 T 14-6  
Stone 16"x8"x8"  
Fir 24" in dia. bears N. 3° 05' E. 550 chs.  
" 24" " " S. 75° 45' E. 784 "

North Exterior corner of William Matzger DLC 50, Twp. 12-6

1507

Reestablishment by W. C. Galloway

July 27, 1911

Original stone 12" x 14" x 1" Marked C 50

Oak 24" in diam bears S 85° E

2.22 chains

Witness Albert Shriber and G. H. Bath

62

DLC 50 T 12-6 5/10/89

FD 15" x 15" x 24" STONE  
MARKED "X" ON TOP AND  
"C 50" ON NORTH SIDE

SET 2" x 36" OD IP WITH  
3/4" BRASS CAP →  
BURIED STONE 1° NORTH  
3" ABOVE SURFACE

60  
FD STUMP + W OAK SNAG  
DOWN 36" DA

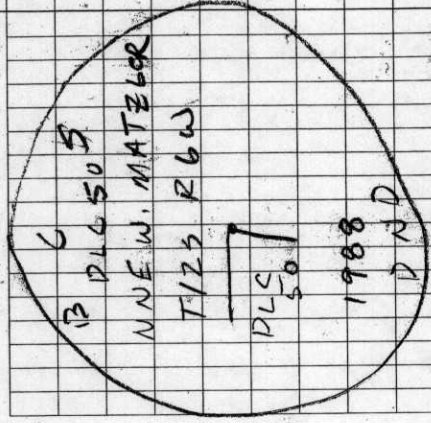
BEARING S 85 E  
SD 149.94 147.00 → TO FACE  
VZ 78-48-30

SET 13" W. OAK BCBW E BASE  
BRG S 6° 30' E  
HD 16.37

BLAZED + SCRIBED "CL 50 BT"  
ALSO HAS AN "X" 4' UP

TRIPLE SET 12" W. OAK BCBW S BASE  
BRG N 62° E  
HD 22.46  
BTS "CL 50 BT"

UNDER A  
STONE IS  
MOUND OF DIRT  
10 NORTH OF PIPE



SET "SURVEY MARKER"  
SIGN 1° SOUTH

N 62 E  
A

S 63 0' E  
13 OAK

D  
GLD  
OAK

3516

126850060

OREGON CORNER RESTORATION FORM

3516

SECTION NNE DLC 50 TOWNSHIP 12 S RANGE 6 W

COUNTY BENTON DATE 5/10/1988

CORNER DESIGNATION

NNE W. MATZGER  
DLC  
50

CONDITION REPORT ONLY  
NOT FOUND  
 RENEWED  
UNRECORDED  
SURVEYED IN  
REFERENCED OUT

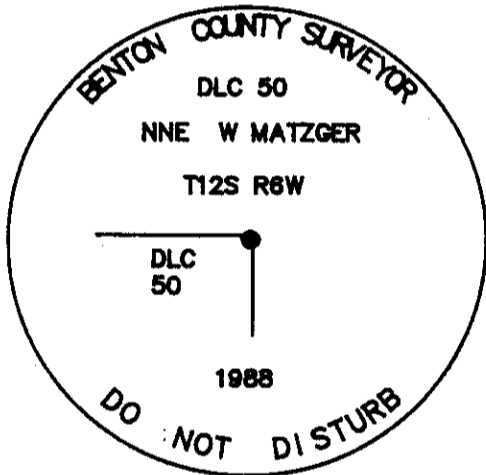
PREVIOUS RENEWALS/SURVEYS, ETC:

JULY 27, 1911 CORNER RESTORATION No. 1507 BY W. C. GALLOWAY.  
FEBRUARY 18, 1987 STONE FOUND BY RAYMOND E. WILSON PLS 1924.

MONUMENTS AND ACCESSORIES FOUND (CONDITION AND SOURCE):

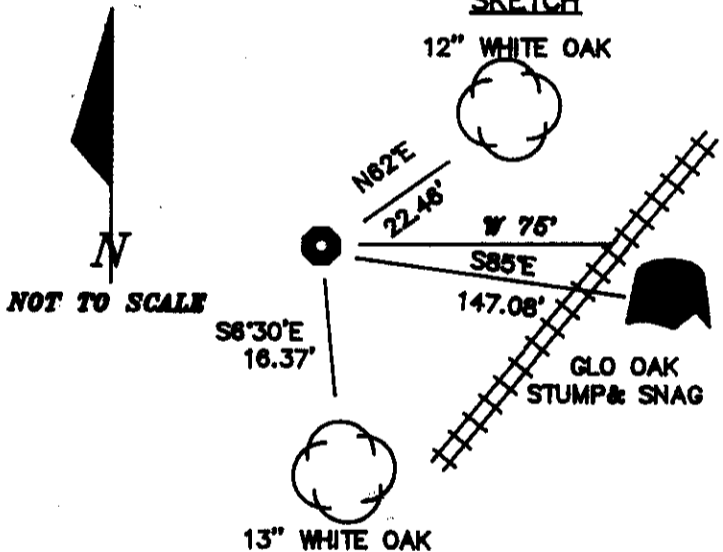
FOUND: 15" X 15" X 24" STONE MARKED "X" ON TOP AND "C 50" ON NORTH SIDE.  
STUMP AND 36" WHITE OAK SNAG (DOWN) S85°E 147.08' (TO CENTER),  
148.28' (TO FACE).

MONUMENT DETAIL



3 1/4" BRASS CAP

SKETCH



MONUMENT SET (PROCEDURES AND DESCRIPTION):

SET: 2" X 36" (OD) IRON PIPE WITH 3 1/4" BRASS CAP MARKED AS SHOWN ABOVE.  
BURIED STONE HORIZONTAL 1.0 FOOT NORTH.  
POSTED A "SURVEY MARKER SIGN" ONE FOOT SOUTH.

NEW ACCESSORIES :

SCRIBED: 13" WHITE OAK S8°30'E 16.37' "CL 50 BT", BLAZED AND HAS "X"  
AT 4 FT HEIGHT, NAILED BCBW TO EAST BASE.

12" WHITE OAK N62°E 22.46' "CL 50 BT", NAILED BCBW TO SOUTH BASE.  
NOTE: THIS BT IS THE SOUTHERLY FORK OF A TRIPLE OAK.

NOTE: BCBW IS A BRASS WASHER STAMPED "BENTON COUNTY SURVEYOR'S OFFICE".  
OD = OUTER DIAMETER

ALL DISTANCES ARE TO BCBW, BEARINGS ARE TO CENTER OF TREE UNLESS OTHERWISE NOTED.

LOCATION AND COMMENTS :

COMPASS DECLINATION: 20° E  
FIRM/AGENCY: BENTON COUNTY PUBLIC WORKS  
ADDRESS: 380 S.W. AVERY CORVALLIS, OREGON  
PARTY CHIEF: RAYMOND E. WILSON  
ANDREW FOSTER  
NOTES:  
WITNESS:

REGISTERED PROFESSIONAL LAND SURVEYOR  
Danna L. Ingram  
OREGON JULY 18, 1982  
DANNA L. INGRAM  
1995