

N. W. corner of Eldredge Hartless DLC 51, Twp 12 S R 6 W

Reestablishment by W. C. Galloway

Set stone 14 x 8 x 7

Oak 24" in diam bears N 55° E

Oak 20" in diam bears S 87° E

Witnesses A. J. Johnson, Deering, Earl Withycomb

1511

March 23, 1914

1.78 chains (standing)

3.14 chains (standing)

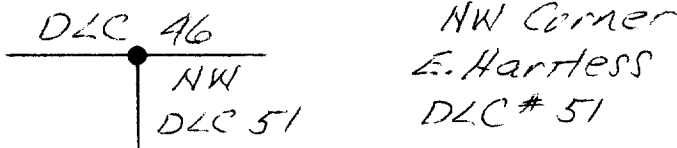
1-79
1511
3462

CORNER HISTORY		T 12 S, R 6 W		SECTION 14 D.L.C. ELDRIDGE HARTLESS NO. 51		CORNER CORNER NW		#
NO.	DATE	SOURCE	SURVEYOR	MONUMENTS AND ACCESSORIES		COMMENTS		
①	9/16/1856	ORIG. GLO	DENNIS HATHORN	SET POST @ 2 OAK B.T.'S		MEAS. TO FACE		1
②	3/23/1914	CS # 428	BURT WILKES	FND BOTH TREES, SET 14x8x7 FOR COR.		FB 17/7		2 3
③	"	OLD COR. REST. BK. #1, PG. 7B	" "	" " " " " " STONE				4 5 6
④	"	REST. 1511	W.C. GALLOWAY	SET STONE 14x8x7 @ 2 OAK B.T.'S STD.		TRANS. COPY OF CD E+100		7
⑤	5/20/1914	CS # 449	BURT WILKES	NO MON. DESC.		FB 17/29		8
⑥	NONE GIVEN	MAP NO. 12-6-00016	BURT WILKES	STONE		3.962 CHS 5'4" + 3.612 CHS 6'4" TO		9
⑦	"	MAP NO. 12-6-00017	BEN. CO. SURV. OFF	STONE				10 11 12
⑧	2/11/1915	MAP NO. 12-6-00020	BURT WILKES	STONE 14x8x7 @ 2 OAK B.T.'S, 1 STD.				13
⑨	NONE GIVEN	CG. RO. NO. 26046 MAP	BEN. CO. SURV. OFF	" @ 3/4" PIPE 2327' E 4" - 1/2" I. BAR 253.05' S 4"				14
⑩	5/1962	CS # 3626	BERT UDELL	NO MON. DESC. FND ^{3/4"} OAK BT		TIES TO E 1/4 PIPE 1' SHRT		15 16
⑪	3/31/1967	CS # B003	THEODORE LANGTON	FND SE BT, SET BL @ 2 NEW ALLES		USED CTR INSTEAD OF FACE		17 18
⑫	4/5/1987	REST. 3462	" "	" " " " " " " "		" " " " " "		19 20
⑬	3/15/1989	CS # B271	DANNA INGRAM FEHRENBACHER	FND 3/16" BL AS PER REC.				21 22
						NEED TO LOOK FOR STONE		23
						DHF 1/28/96		24 25 26 27 28 29 30 31

Section 14 Township 12S Range 6W

County Benton Date 4/5/87

CORNER DESIGNATION



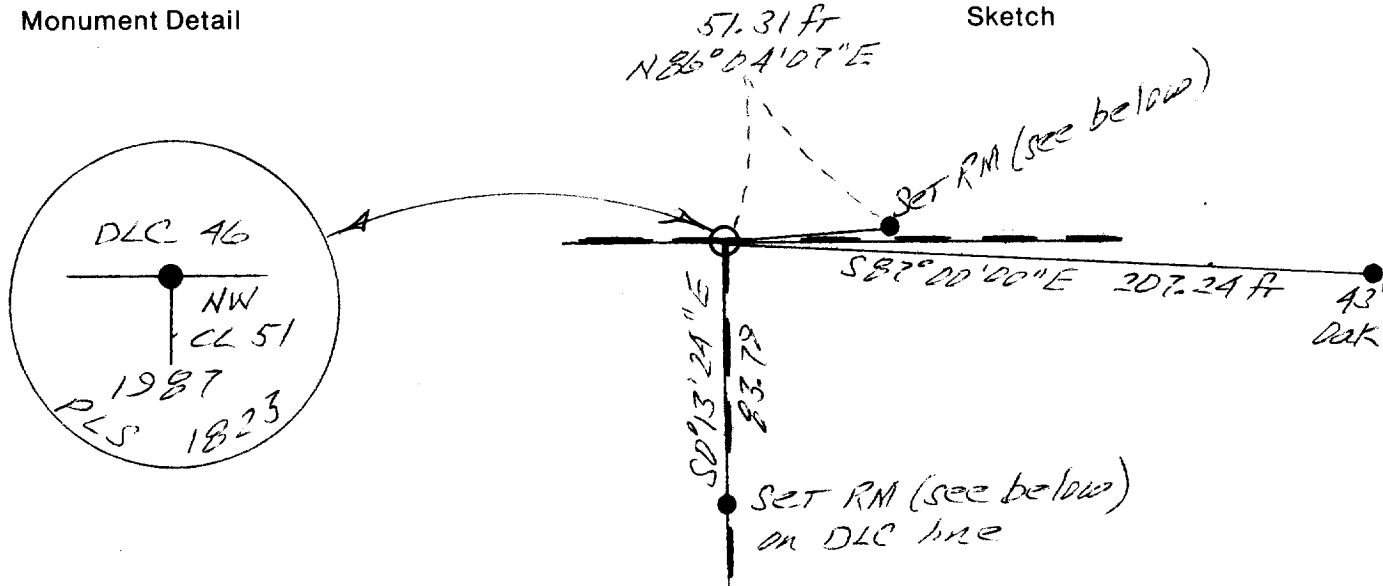
- Condition Report Only
- Not Found
- Renewed
- Unrecorded
- Surveyed In
- Referenced Out

Previous Renewals/Surveys, etc. CS 3626, Hardcopy surveys
12-6 #s 16 & 17 & 20, County Road Survey: Route 46
Sec. B, Road No. 611.

Monument(s) & Accessories Found: (Condition and Source)

43" Oak, live but hollow center (reported to
have a bee hive) S87°E, 3.14 ch (=207.24 ft) per
Hardcopy survey 12-6 #20, Healed face.

Monument Detail



Monument Set (Procedures and Description) By theodolite and tape based
on a tie to the center of the 43" Oak using a solar Basis of
Bearings and data from Hardcopy Survey 12-6 #20 are set a 3/8"
BC on 2" square x 36" long perforated galvanized steel fence
post 20" below ground level.

New Accessories
Set 5/8" x 30" rebar with yellow plastic cap stamped
"Northstar PLS 1823" for Reference Monuments as follows:
N86°04'07" E, 51.31 ft (1 ft E of NE corner of shed).
S0°13'24" E, 83.79 ft (on DLC line in fence line).

Location & Comments

Corner lies in
open pasture 50 ft
west of NE corner
of shed and approx.
200 ft NE 1/4 of
Grange Hall Road.

Compass Declination 20°E
Firm/Agency _____
Northstar Surveying Inc.
Address 402 NW 5th St
Corvallis, OR 97330
Party Chief Bill Lauer
Notes FB 160
Witness T. Langton

Surveyor's Seal



DATE 01/24/1996TOWNSHIP 12 SOUTH, RANGE 6 WEST, WILLAMETTE MERIDIAN; SECTION 14 CORNER
DONATION LAND CLAIM ELDRIDGE HARTLESS NO. 51CORNER NW**COMMON CORNER(S):**

THE SOUTH LINE OF THE DAVID HENDERSON DLC NO. 46.

UPDATES AND REVISIONS:**CORNER RECORDS (PREVIOUS RENEWALS, SURVEYS, ETC.)**

- [01] ORIGINAL GLO SURVEY BY DENNIS HATHORN DATED SEPTEMBER 16, 1856.
- [02] COUNTY SURVEY NO. 428 BY BURT WILKES DATED MARCH 23, 1914 (FIELD BOOK NO. 17, PAGE 7).
- [03] OLD CORNER RESTORATION BOOK NO. 1, PAGE 78 BY BURT WILKES DATED MARCH 23, 1914.
- [04] CORNER RESTORATION 1511 BY W.C. GALLOWAY DATED MARCH 23, 1914.
- [05] COUNTY SURVEY NO. 449 BY BURT WILKES DATED MAY 20, 1914 (FIELD BOOK 17, PAGE 29).
- [06] MAP NO. 12-6-00016 BY BURT WILKES (NO DATE GIVEN).
- [07] MAP NO. 12-6-00017 BY BENTON COUNTY SURVEYOR'S OFFICE (NO DATE GIVEN).
- [08] MAP NO. 12-6-00020 BY BURT WILKES DATED FEBRUARY 11-13, 1915.
- [09] COUNTY ROAD NO. 26046 MAP BY BENTON COUNTY SURVEYOR'S OFFICE (NO DATE GIVEN).
- [10] COUNTY SURVEY NO. 3626 BY BERT UDELL DATED MAY 1962.
- [11] COUNTY SURVEY NO. 8003 BY THEODORE LANGTON DATED MARCH 31, 1987.
- [12] CORNER RESTORATION 3462 BY THEODORE LANGTON DATED APRIL 5, 1987.
- [13] COUNTY SURVEY NO. 8271 BY DANNA INGRAM FEHRENBACHER DATED MARCH 15, 1989.

COMMENTS/LOCATION/ETC:

THE SURVEYOR OF RECORD [01] MEASURED DISTANCES TO THE FACE OF BEARING TREES.

RECORD [04] IS A TRANSCRIBED COPY OF RECORD [03] AND CONTAINS ERRORS AND/OR OMISSIONS.

THE SURVEYOR OF RECORD [11] & [12] SHOULD HAVE REMONUMENTED THE CORNER N 87° W 0.83 FEET FROM WHERE HE DID.
THIS IS THE DIFFERENCE BETWEEN THE FACE AND THE CENTER OF THE RECORD [01] SOUTHEAST BEARING TREE. THE
MONUMENT HAS BEEN ACCEPTED AS THE CORNER.

SEE RECORD [13] FOR GEODETIC VALUES.

ON JANUARY 24, 1996 CURT LIESENFELT AND MARK ANDERSON VISITED THIS CORNER TO SEARCH FOR THE UN-RECOVERED STONE
FROM RECORD [04]. THE STONE WAS NOT FOUND BUT THE BRASS CAP AND THE NORTHEAST REBAR WERE FOUND AS PER
RECORD [12].

NOTES:

THIS IS A MICROSOFT WORD (VERSION 5.0) DOCUMENT NAMED "26851040" CREATED FROM A BOILER PLATE DOCUMENT NAMED
"HISTORY", WHICH HAS A STYLESHEET NAMED "CORNER" ATTACHED TO IT.

FIRM/AGENCY: BENTON COUNTY SURVEYOR'S OFFICE**ADDRESS:** 360 S.W. AVERY AVE. CORVALLIS OR 97333; PH. 757-6821**RESEARCH BY:** CURTIS J. LIESENFELT/MARK E. ANDERSON**DATA ENTRY BY:** ROSE LINDGREN