

5.

C.S. # 267
continued

The Most North N.E. cor. of C1. # 52 T. 12-6.
of John Grimsley D.L.C. # 52.

Set 1/2" pipe.

Oak 12" in dia. bears S. 39° E. .97 chs. std.
" 12" " " " S. 30° W. .77 " "

Witnesses C. W. Davis, Chas. Poff et al. Jan. 17, 1920.

-5.

C.S. # 284

Continuation of C.S. 26
W.C. Galloway C.S.
May 13, 1940, I. W.C. G. found
pipe and post at trees

S.E. cor. of Joseph T. Huggart C1. 61 T. 10 S. R. 4 W.

A 3/4" pipe set by F. Marion Wilkes

Anchor post East 20.4 feet to west face.

Oak 12" S 40° E. 2.453
" 12" N 45° 53' E. 2.219
" 12" N 45° 53' E. 4.629
Old fence on hill N 0° 12' E.

E. cor.

"

N.E. cor. of D. D. Davis C1. 40 T. 10 S. R. 5 W.

3/4" pipe set by F. Marion Wilkes.

Ash 12" x 20" in dia. bears N. 16° 30' E. .358 chs.

A 1/4" pipe S. 23° 29' E. 4.98 chs.

Witness to corner after set Jacob Rohner Feb. 1920.

C.S. # 134
continued.

N.E. cor. of Green B. Smith C1. # 51 T. 10 S. R. 5 W.

Set a 3/4" pipe. S.W. ash gone. cor. in old fence row.

Oak 20" in dia. bears N. 35° W. 5.10 chs. std.

Witness Jos. C. Smith. Feb. 25, 1920.

10

C.S. # 127
continued

1/4 Sec. cor. on 3rd. std. parallel on N. line of Sec. 2, T. 14-8.

Set a 1/2" shaft from Maple stump S. 82° E. .42 chs. std.

A Stone or rock 6' x 8' x 9" S. 51° 15' W. 1273 chs.

Witnesses E. Taylor, W. P. Risley et al. Apr. 2, 1912.

re ment.

C.S. # 127

Sec. cor. between secs. 2 & 3 on 3rd. Std. parallel T. 14-8.

Set Stone 5" x 12" x 14" Orig. cor. one tree is a stump now.

Fir 5" in dia. bears S. 48° E. .37 chs. std.

" 12" " " N. 5° E. .691 "

C.S. 137
continued

Witness Lester Smith
by Alex. Hayes.

~~3/8" rod (fir gone 1917)
Fir 56" in dia. Cor. on N. line of Saul Gage C1. # 57 T. 12 S R 5 W.~~

~~Cor. 20.586 chs. N. of N.E. Cor. said claim. Maple 60" N 53° 13' E 0.828
at 12" S 77° 08' W. 0.420~~

~~N.E. Cor. Samuel Gage D.L.C. # 57: 3/4" oak pipe, maple 10" S. 61' W. 24 std. sunk. T. 12-5
o. 12" S. 44° E. 4.75 5/8" rod Maple 12" S. 71° 32' W. 0.365~~

Most North N. E. corner of C1 52, Twp. 12-6, of John Grimsley 1512

Reestablishment by W. C. Galloway

January 17, 1920

Set $\frac{1}{2}$ " pipe.

Oak 12" in diam bears S 39° E

.97 chains(standing)

Oak 12" in diam bears S 30° W

.77 chains(standing)

Witnesses C. W. Davis, Charles Peff, et. al.

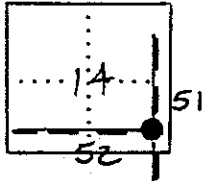
126852070

BENTON COUNTY SURVEYORS OFFICE - CORNER RESTORATION

3380

1/2 S, R 6 W, W. B. & M., BENTON COUNTY, OREGON
 SECTION JOHN GRIMSLEY DLC # 52

REPORTED BY PETE Mc DOWELL
 TITLE SURVEY TECH II
 DATE 3-12-86
DANNA L. INGRAM, B.C.S.



● OFFICIAL CORNER FOUND
 ○ CORNER SET

NNE CORNER COMMON TO SEC. CL 52
 IS 2 1/2" O.D. X 36" PIPE W/ 3" BRASS CAP (SEE DESCRIBE)

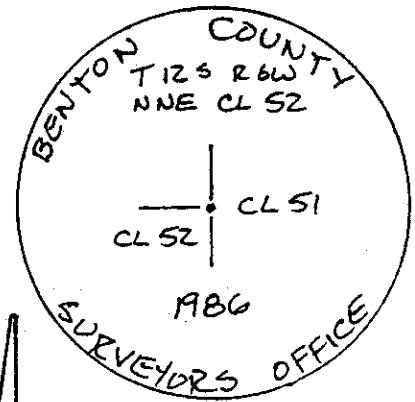
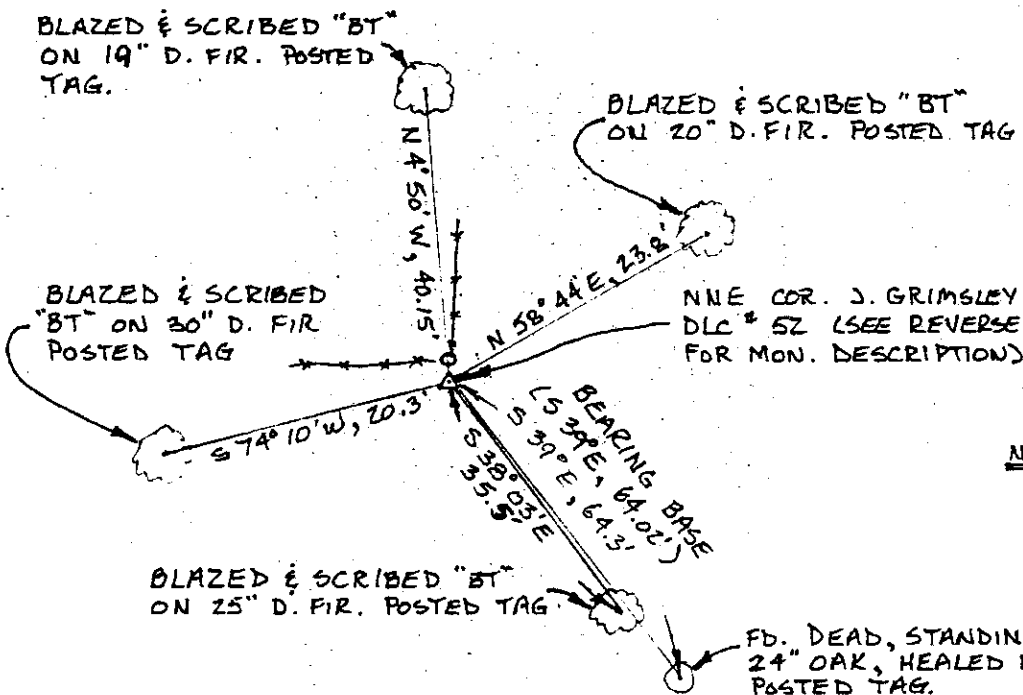
ADDITIONAL INFORMATION
 REVERSE FOR CAP DETAIL). FD. 1/2" I.D.
 PIPE PER RESTORATION #1512 @ SURFACE.
 GALLOWAY BT, NOW A DEAD STANDING OAK,
 24", W/ HEALED FACE, BEARS S 39° E, 64.3'
 SET 2 1/2" O.D. X 36" PIPE W/ BRASS CAP,
 30" IN GROUND, OVER FD. PIPE. CORNER
 LIES 1° S. OF OLD FENCE COR. FENCE
 RUNS N. & W. FROM COR. NAILED
 "SURVEY MARKER" SIGN ON FENCE
 COR. POST.

LEGIBLE MARKS ON BEARING OBJECTS			
BLAZED & SCRIBED	BLAZED & SCRIBED	BLAZED & SCRIBED	BLAZED & SCRIBED
"BT"	"BT"	"BT"	"BT"
KIND	D. FIR	D. FIR	D. FIR
SIZE	20"	25"	19"
BEARING	N 58° 44' E	S 38° 03' E	S 74° 10' W
DISTANCE	23.8'	35.5'	40.15'
BT TAG POSTED	YES	YES	YES

OVER

LEGEND:

() RECORD DATA PER RESTORATION #1512



BRASS CAP DETAIL

NO SCALE

REGISTERED
 PROFESSIONAL
 LAND SURVEYOR

Danna L. Ingram

OREGON
 JULY 10, 1982
 DANNA L. INGRAM
 1986