

C.S. 16

By E. Marion Wilkes C.S.

Aug. 17, 1905.

N.W. Corner of Jos. C. Alexander D.L.C. # 46 T. 12 S. R. 5 W.

Set a 1" brass pipe from which

4 Maple 9" in dia. bears N7° 20' W 21 feet
 " Fir 6" " " N. 79° E. 20.2 "
 " " 11" " " S. 32½ E. 145.0 "

W.C. Galloway C.S.

W.W. Larson

1921

S.W. corner of Geo. Wilhelm D.L.C. # 53 T. 12-6

Set 1" x 30" pipe and glass. Set from orig tree near also

in center of lane running E. and center of County Road

Oak 15" in dia. bears N. 25° E. 956 chs.

Fir 9" " " N. 74° W. 466 "

Set 1" x 24" bolt West 30 feet.

C.S. 174

By W.C. Galloway C.S.

Witnesses

Geo. L. Linton

M.H. Schreiner

June 1920

S.W. corner of Alfred Henson D.L.C. # 67 T. 12-6 ✓

Set gun bbl. in rotten stump which was the corner tree.

Fir 15" in dia. bears S. 25½ W. 584 chs. bearing from transit line

Oak 10" S. 51° 00' W. 0.185 "

Oak 19" S. 63° W. 108 "

923 setting all out 1951 reset from N.E.E. by M.L. Boyader.

Corner to sections 3, 4, 9 & 10 T. 11 S. R. 5 W.

Set a Stone 6" x 10" x 10" All oaks found dead

Marked a Fir 20" in dia. bears N. 85° E. 247 chs

Maple 9" " " S. 32° E. 205 "

Fir 16" " " S. 80° W. 540 "

Maple 10" " " "

C.S. 131 A

Witnesses

J. John & J.H. Wilkes

1912

Corner to Secs. 33, 34, 37 & 4 Tps. 12 S. R. 5 W.

Corner is a ^{quar.} ~~corner~~ Set on ~~location~~ and ~~marked~~ by F. Wilkes.

1" pipe bears N. 70° E. 5687 chs.

2" " " S. 0° 27' W. 9855 "

C.S. 280

Set by F.M. Wilkes

Witnesses as above

Feb. 25

1/4 sec. corner bet. Secs. 33 & 34 T. 12 S. R. 5 W.

Set 1" pipe for corner.

1" pipe bears N. 0° 07' E. 20.00 chs.

2" " " S. 0° 07' W. 30.183 "

Misc. areas

Set by Burt Wilkes D.P.S.

A-2 1916.

S.W. cor. of Thos. Norris D.L.C. # 55 T. 12-5

Set 1 x 40" pipe for corner,

Misc. areas C.S.

Burt & Geo. Murray

Nov. 1941

Witnesses W.C. G.

Aug. 1941 M.H. Seitz

C.S. 289

W.C. Galloway C.S.

Dec. 1920

Witnesses

E.J. Leach, Jr.

Geo. & C.E. Davis.

S.E. corner of James W. Dunn D.L.C. # 50 T. 12-5

A stone in place for corner Placed 2000 pipe under stone also
set cog wheel around pipe.

S.E. corner of Benj. Cutler D.L.C. # 65 T. 12-5

Stone 8" x 4" x 15" set for corner

A 1/2" pipe the 1/4 sec. cor. between Secs. 32 & 33 bears

N. 64° 43' W. 250 chs.

C.S. 2

Witnesses

C.S. 1

W.C. G.

C.E. Davis

C.S. 1

W.C. G.

E.J. Leach

Geo. & C.E.

Dec. 1920

C.S. # 2

W.C. Galloway

G.A. Hinds

F.A. Hoff

Witnesses

C.S. # 1

F.M. Wilkes

Robert H.

C.S. 1

F.M. Wilkes

Oct. 17, 1912

checked by

shaft set

W.C. Galloway

Mar. 8, 1912

C.S. # 1

set by

Oct. 15, 1912

the tied

+ house

W.C. Galloway

Mar. 8, 1912

C.S. 21

F.M. Wilkes

Referenced

March 14, 1912

S. W. Corner of George Wilhelm DLC 53, Twp 12-6

1514

Reestablishment by W. C. Galloway

1921

Set 1" x 30" pipe and glass, Set from original tree ~~now~~ also, in center of land running E. and center of County road.

Oak 15" in diam bears N. 25° E.

.956 chains

Fir 9" in diam bears N. 74° W.,

.466 chains

Set 1" x 24" bolt West 30 feet

Witness W. W. Larson

Re-establishment by R. W. Fail Deputy County Surveyor

1960

Found 1" x 30" pipe and glass pipe bent, replaced pipe with 3/4" x 30" iron rod.

Oak 15" bears N 25 E, Now stump. .956 chains

Fir 9" bears 40" N. 74 W., Standing .466 chains

Bolt 30 feet West Gone

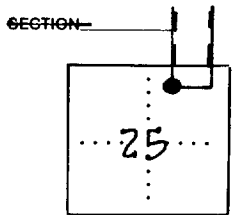
Witness: L. A. Wells

BENTON COUNTY SURVEYORS OFFICE - CORNER RESTORATION

3298

T. 12 S, R. 6 W, W. B. & M., BENTON COUNTY, OREGON
 SECTION _____ S.W. CORNER GEORGE WILHELM
 D.L.C. 53

REPORTED BY JOHN RINALDI JR.
 TITLE BENTON COUNTY SURVEY CREW CHIEF
 DATE NOVEMBER 27, 1984



● OFFICIAL CORNER FOUND

○ CORNER SET

CORNER COMMON TO SEC. _____ & _____

IS _____ DESCRIBE _____

ADDITIONAL INFORMATION

FOUND 3/4" IRON ROD PER C.S. 3380 AND
 CORNER RESTORATION CARD N° 1514 AT 0.2'
 BELOW ASPHALT ROAD (S. PHILOMATH BLVD. #26250).
 MONUMENT LEFT AS IS AND IN PLACE. FOUND
 ALSO 55" DIA. TRIPLE DOUG. FIR PER SAID
 CORNER RESTORATION CARD (WAS 9" FIR @
 N. 74° W. 30.76' FROM CORNER PER SAID CARD).
 3/4" IRON ROD IS IN NORTH BOUND LANE OF SAID
 ROAD.

LEGIBLE MARKS ON BEARING OBJECTS

KIND	TRIPLE DOUG. FIR		
SIZE	55" DIA.		
BEARING	N. 74° W.		
DISTANCE	30.7'		
BT TAG POSTED	YES		

OVER

154
1514
3298
3487

CORNER HISTORY		T 12 S, R 6 W		SECTION 25 D.L.C. GEORGE WILHELMS NO. 53		CORNER CORNER SW		#853050
NO.	DATE	SOURCE	SURVEYOR	MONUMENTS AND ACCESSORIES			COMMENTS	
1	9/16/1856	ORIG. GLO	DENNIS HATHORN	SET POST @ 2 DAK BT'S			MEAS. BT'S TO FACE	1
2	1921	OLD COR. REST. BK. #1, PG. 154	W.C. GALLOWAY	FND. ORIG. TREE, SET PIPE + GLASS @ 3 ACRES.				2 3
3	"	REST. # 1514	" "	" " " " " " " " " " " " " "				4 5
4	4/25/1923	CO. RD. NO. 26250 RTE 25-A PG. 6	" "	1" PIPE @ 3 ACRES.			PHIL. S. TRANSIT NOTES	6 7
5	4/14-6/8 1923	CO. RD. NO. 26250 MAP	" "	1" PIPE			FILED IN BOX #3	8 9
6	6/1/1923	MAP NO. 12-6-00035	" "	" " @ 3 ACRES.				10 11
7	5/16/1928	CO. COURT JOURN. 11A PG. 504	BENTON COUNTY	NO MON. DESC.				12
8	NONE GIVEN	CO. RD. NO. 26251 RTE. 25-01	" "	1" PIPE & 1" BOLT 30' W/H			RD. BOOK #3, PG. 40	13
9	1/20/1934	CS # 1232	W.C. GALLOWAY	3/4" PIPE OR 1" PIPE @ 3 ACRES.			FB 66/30	14
10	6/1934	MAP NO. 12-6-00030	" "	1" PIPE @ 3 ACRES.				15 16
11	6/22/1980	CS # 3380	RICHARD FAIL	FND. 1" I.P. BENT SET 3/4" PIN				17 18
12	1960	REST. # 1514	" "	" 1" x 30" BENT PIPE + GLASS + 2 BT'S SET 3/4" x 30" I.P.				19 20
13	5/7/1970	CS # 4920	" "	NO MON. DESC.				21 22
14	11/27/1984	REST. # 3298	JOHN RINALDI JR.	FND. 3/4" I. ROD + D. FR BT				23 24
15	9/8/1987	REST. # 3487	DANNA INGRAM	" " " " " " SET BC + EST. 2 ACRES.				25 26
16	3/6/1989	CS # 8271	DANNA INGRAM- FEHRENBACHER	" 3/4" BC				27 28
17	11/12/1989	CS # 8354	DANNA FEHRENBACHER	" " "				29 30 31

DATE 04/23/1996TOWNSHIP 12 SOUTH, RANGE 6 WEST, WILLAMETTE MERIDIAN; SECTION 25 CORNER _____
DONATION LAND CLAIM GEORGE WILHELMS NO. 53 CORNER SW**COMMON CORNER(S):**

THE EAST LINE OF THE JAMES M. CHISHAM DLC NO.54.

UPDATES AND REVISIONS:**CORNER RECORDS (PREVIOUS RENEWALS, SURVEYS, ETC.)**

- [01] ORIG GLO SURVEY BY DENNIS HATHORN DATED SEPTEMBER 16, 1856. *SET POST WITH 2 OAK BEARING TREES. MEASURED DISTANCES TO THE FACE OF BEARING TREES.*
- [02] OLD CORNER RESTORATION BOOK NO. 1, PAGE 154 BY W.C. GALLOWAY DATED 1921. *FOUND ORIGINAL BEARING TREE, SET PIPE AND GLASS WITH 3 ACCESSORIES.*
- [03] CORNER RESTORATION NO. 1514 BY W.C. GALLOWAY DATED 1921. *THIS IS A TRANSCRIBED COPY OF RECORD [02] AND MAY CONTAIN ERRORS AND OMISSIONS.*
- [04] COUNTY ROAD NO. 26250 RTE 25-A PG. 6 PHILOMATH SOUTH TRANSIT NOTES, BY W.C. GALLOWAY DATED APRIL 25, 1923. *1" PIPE WITH 3 ACCESSORIES.*
- [05] COUNTY ROAD NO. 26250 MAP BY W.C. GALLOWAY DATED APRIL 14 - JUNE 8, 1923 (BOX #3). *1" PIPE.*
- [06] MAP NO. 12-6-00035 BY W.C. GALLOWAY DATED JUNE 1923. *1" PIPE WITH 3 ACCESSORIES.*
- [07] COUNTY COURT JOURNAL APRIL 4TH, PAGE 504 BY BENTON COUNTY DATED MAY 16, 1928. *NO MONUMENT DESCRIPTION.*
- [08] COUNTY ROAD NO. 26251 RTE. 25-01 BY BENTON COUNTY SURVEYOR'S OFFICE (NO DATE GIVEN). (ROAD BOOK NO. 3, PAGE 40). *1" PIPE AND 1" BOLT 30 FEET WESTERLY.*
- [09] COUNTY SURVEY NO. 1232 BY W.C. GALLOWAY DATED JUNE 28, 1934 (FIELD BOOK NO. 66, PAGE 30). *3/4" PIPE OR 1" PIPE WITH 3 ACCESSORIES.*
- [10] MAP NO. 12-6-00030 BY W.C. GALLOWAY DATED JUNE 1934. *1" PIPE WITH 3 ACCESSORIES.*
- [11] COUNTY SURVEY NO. 3380 BY RICHARD FAIL DATED JUNE 22, 1960. *FOUND 1" IRON PIPE BENT, SET 3/4" PIN.*
- [12] CORNER RESTORATION NO. 1514 BY RICHARD FAIL DATED 1960. *FOUND 1" X 30" BENT PIPE AND GLASS AND 2 BEARING TREES, SET 3/4" X 30" IRON ROD.*
- [13] COUNTY SURVEY NO. 4920 BY RICHARD FAIL DATED MAY 7, 1970. *NO MONUMENT DESCRIPTION.*
- [14] CORNER RESTORATION NO. 3298 BY JOHN RINALDI JR. DATED NOVEMBER 27, 1984. *FOUND 3/4" IRON ROD AND DOUGLAS FIR BEARING TREE.*
- [15] CORNER RESTORATION NO. 3487 BY DANNA INGRAM DATED SEPTEMBER 8, 1987. *FOUND 3/4" IRON ROD AND DOUGLAS FIR BEARING TREE. SET BRASS CAP AND ESTABLISHED 2 ACCESSORIES.*
- [16] COUNTY SURVEY NO. 8271 BY DANNA INGRAM-FEHRENBACHER DATED MARCH 6, 1984. *FOUND 3 1/4" BRASS CAP.*
- [17] COUNTY SURVEY NO. 8354 BY DANNA FEHRENBACHER DATED NOVEMBER 12, 1989. *FOUND 3 1/4" BRASS CAP.*

COMMENTS/LOCATION/ETC:**NOTES:**

THIS IS A MICROSOFT WORD (VERSION 5.0) DOCUMENT NAMED "26853050" CREATED FROM A BOILER PLATE DOCUMENT NAMED "HISTORY", WHICH HAS A STYLESHEET NAMED "CORNER" ATTACHED TO IT.
INFORMATION IN BOLD ITALICS IS COUNTY STAFFS' INTERPRETATION OF THE RECORD.

FIRM/AGENCY: BENTON COUNTY SURVEYOR'S OFFICE
ADDRESS: 360 S.W. AVERY AVE. CORVALLIS OR 97333; PH. 757-6821
RESEARCH BY: CURTIS J. LIESENFELT/MARK E. ANDERSON
DATA ENTRY BY: ROSE LINDGREN

OREGON CORNER RESTORATION FORM

DLC Section 53 Township 12 S Range 6 W

County BENTON Date 9/8/1987

CORNER DESIGNATION

DLC 54 | DLC 53

SOUTHWEST CORNER
OF G. WILHELM
DLC 53

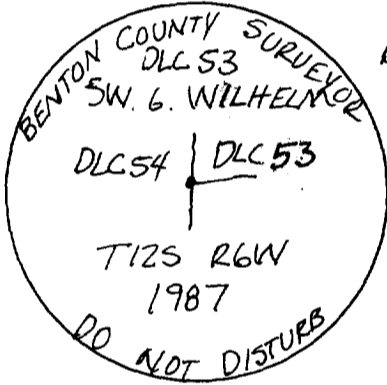
- _____ Condition Report Only
- _____ Not Found
- Renewed
- _____ Unrecorded
- _____ Surveyed In
- _____ Referenced Out

Previous Renewals/Surveys, etc. CORNER REST. No. 1514 01/01/1921,
CORNER REST. No. 1514 01/01/1960, AND CORNER REST No 3298
11/27/1984, 12-6-00030.

Monument(s) & Accessories Found: (Condition and Source)

FOUND A 3/4" IRON ROD 3" BELOW SURFACE (PER CORNER REST No.
1514 01/01/1960). HELD ROD AS LOCATION OF CORNER.
1) FOUND A 55" DOUGLAS-FIR BEARING N73° W 30.40' NAILED
A BCBW TO THE SW BASE (N74° W 30.40' PER CORNER REST No
3298). TREE WAS ALREADY TAGGED.

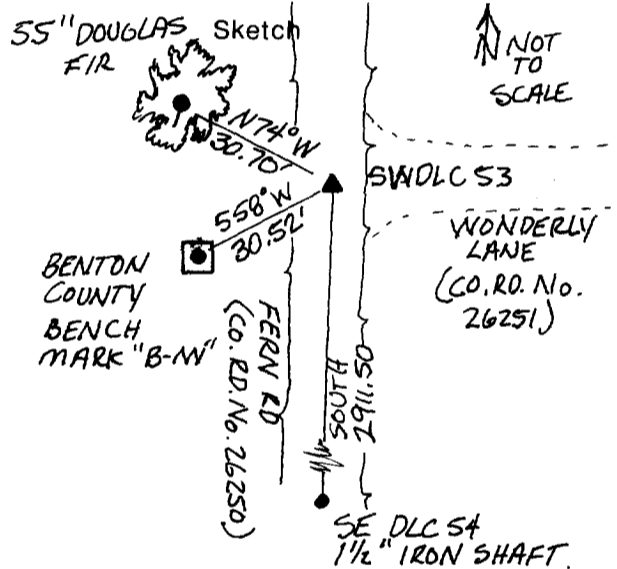
Monument Detail



3/4" BRASS CAP

NOTES:

BCBW → BENTON COUNTY
BRASS WASHER
DISTANCE TO BCBW
BEARINGS TO TREE &



Monument Set (Procedures and Description)

SET A 2" X 36" OUTSIDE DIAMETER IRON PIPE OVER THE 3/4" IRON ROD
WITH A 3/4" BRASS CAP IN A STREET MONUMENT BOX.

New Accessories 1) FOUND A BENTON COUNTY BENCH MARK STAMPED "B-M"
ON A CONCRETE PAD BEARING S58° W 30.52'
2) FOUND A 1 1/2" IRON GEAR SHAFT (SE DLC 54) BEARING SOUTH
2911.50' (S 00° 02' W 2910.60' PER 12-6-00030).

Location & Comments

CORNER IS AT THE Compass Declination 20° E
INTERSECTION OF FERN Firm/Agency BENTON COUNTY
ROAD (COUNTY ROAD No. PUBLIC WORKS
26250) AND WONDERLY Address 360 SW AVERY AVE.
LANE (COUNTY ROAD CORVALLIS OR 97333
No. 26251). Party Chief PETE M E DOWELL
Notes Andy Foster
Witness _____

Surveyor's Seal

