

CORNER FILE TRACKING

H:\Survey\Corners\Misc\Filetrac.doc

11/23/98

| |
|----------------------|
| CORNER NUMBER |
|----------------------|

| |
|-----------|
| 126857040 |
|-----------|

| STEP | HISTORY() | RESTORATION() |
|---------------------------|-----------|---------------|
| Form Prepared, DB | 7/30/02 | 7/31/02 |
| Field Inspection, DB | 7/31/02 | 7/31/02 |
| Form Checked, DB | 8/13/02 | 8/13/02 |
| Form Edited, DB | 8/18/02 | 8/18/02 |
| Form Signed, DB | 8/26/02 | 8/26/02 |
| Authorize Payment, DB | — | — |
| Archive Digital Files | 12/10/02 | 12/10/02 |
| Collect Documents | 12/10/02 | 12/10/02 |
| Scanned | 12/11/02 | 12/11/02 |
| Copy For Filming | | |
| Filed, DB | | |
| Finish index (count unit) | 8/26/02 | 8/26/02 |
| Filmed (Archived), DB | | |

(DB) = Entry needed in database (Access).

COMMENTS:

" " N.W. cor. of C. P. Blair D.L.C. # 57 Tp. 12-6.
 Set handle 8" in dia. two stumps std. orig. cor.
 Oak 12" in dia. base S. 30' E. 877'
 " 11" " " N. 87° 41' W. 296'
 Witness Fred Sand, R. Hjeltnick & H. Plogman. Dec. 10, 1910.

" #101 1/4 sec. cor. between sec. 27 & 28 Tp. 12-C.
 W.C. & G. Set 7" steel rod.

Oak 18" in dia. base S. 64° 53' E. 2410'
 " 19" " " N. 32° 13' W. 4932'
 Witness Elmer Benton & Robert Sandford Dec. 17, 1910.

" " Sec. cor. to sec. 27, 28, 33 & 34 Tp. 12-C.

Set 4 iron. orig. cor.
 Fir 40" in dia. base N. 71° E. 89' std.
 " 36" " " S. 31° E. 17'
 " 15" " " S. 64° 40' W. 274'
 " 36" " " N. 10° W. 12' "

" " Witness Elmer Benton & Robert Sandford Dec. 15, 1910.
 1/4 sec. cor. bet. sec. 27 & 34 Tp. 12-6.

Set 1 1/2 pine orig. cor.
 Fir 20" in dia. base S. 21° 21' W. 268'
 " 36" " " N. 37° W. 24' std.
 Witness Elmer Benton & Robert Sandford Dec. 17, 1910.

5

Northwest Corner of C. P. Blair DLC 57, Twp. 12-6

1527

Reestablishment by W. C. Gallaway

December 10, 1910

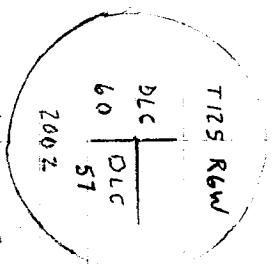
Set boulder 8" in diam (two stumps standing) original corner
Oak 12" in diam bears S. 30' E .877 chains
Oak 11" in diam bears N. 87° 41' W .296 chains
Witnesses Fred Seemet, A. Majestrik, and H. Plagman

Sec. 26

REMONUMENTING W-NW COR.

CORBERT BLAIR D.L.C. No. 57 12-6

FD 10' x 8' STONE W/4" ON TOP POINT
 AND "CS" ON S SIDE 4' BELOW GR.
 LEVEL. FD 5/8" IR ON S SIDE OF
 STONE (0.3 SLY) 4" ↓.
 FD 18" OAK STUMP A W/HEAVED LOWER
 BLAZE PER CC. 1961.
 NO EVIDENCE OF GLO ACCESSORIES REMAIN.
 NO EVIDENCE OF GLO MOUND WAS FOUND
 HEED + ON STONE FOR TRUE COR POSITION
 REMOVED STONE AND SET 2 1/2" 36" GIP W/3 1/4"
 BRASS DISK CEMENTED ON TOP, FLASH W/GR
 LEVEL, MKD AS SHOWN.
 LEFT 5/8" IR. UNDISTURBED, BURIED STONE
 ON N SIDE OF NEW MON. 4" ↓
 SET 6 ORANGE CARBONITE POST 0.5 E

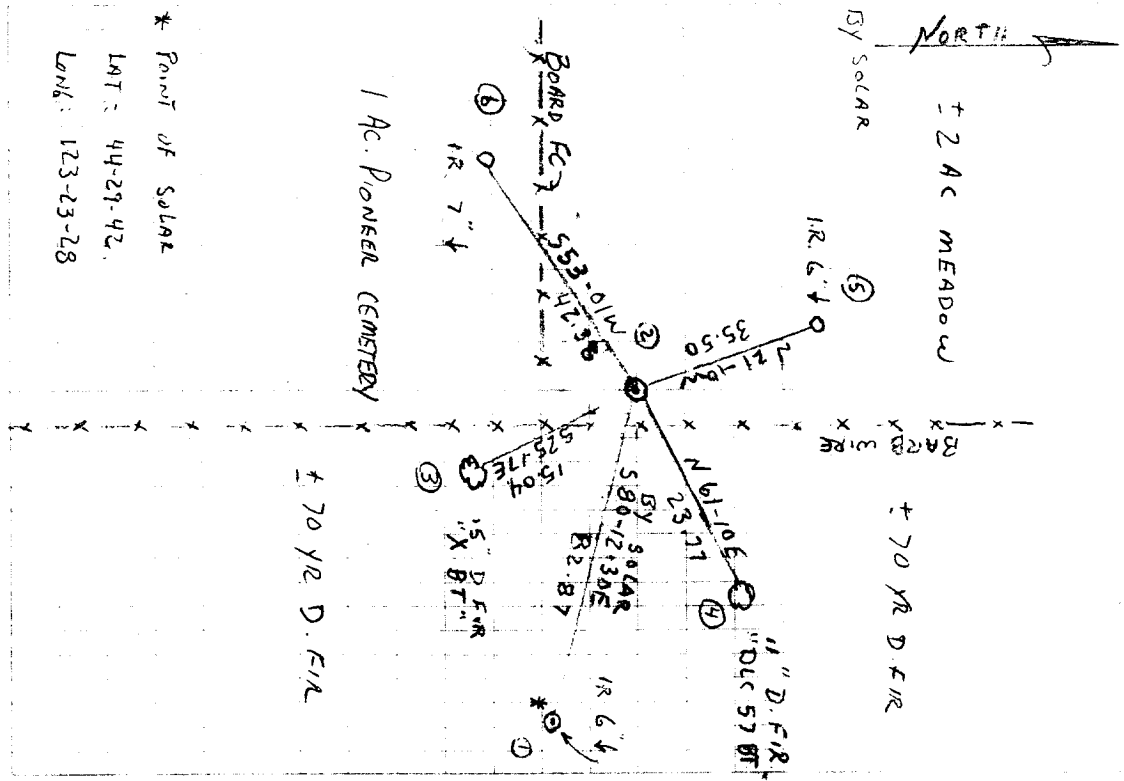


3 1/4" BRASS DISK

T 15° 5'
 30° 0' N;
 LECH FOR 105

7/31/02
 D. DEAN
 D. ABRAHAM
 CLEAR, WARM

20/65



* Point of SOLAR
 LAT: 44-29-42.
 LONG: 123-23-28

DATE 07/30/2002TOWNSHIP 12 SOUTH, RANGE 6 WEST, WILLAMETTE MERIDIAN; SECTION 26 CORNER NONE
DONATION LAND CLAIM COLBERT P. BLAIR NO. 57 CORNER WEST-NORTHWEST**COMMON CORNER(S):**

POINT ON EAST LINE CLEMENT BARKER D.L.C. NO. 60

RECORDS (INFORMATION IN *BOLD ITALICS* IS COUNTY STAFFS' INTERPRETATION OF THE RECORD)

BASED ON EXTENSIVE RESEARCH AND RECOVERY OF EVIDENCE, THIS OFFICE HAS DETERMINED THAT MOST GENERAL LAND OFFICE SURVEYORS MEASURED TO THE FACE OF BEARING TREES.

- [01] GENERAL LAND OFFICE (GLO) NOTES OF THE COLBERT BLAIR DONATION LAND CLAIM (DLC) NO. 57 BY DENNIS HATHORN, D.S., DATED FEBRUARY 20, 1855. *SET POST WITH 2 OAK BEARING TREES.*
- [02] GLO NOTES OF THE CLEMENT BARKER DLC NO. 60 BY DENNIS HATHORN, D.S., DATED FEBRUARY 1855. *CORNER TIED BUT NOT DESCRIBED.*
- [03] COUNTY SURVEY NO. 196 (OLD NO. 100) FIELD NOTES (BOOK 8, PAGE 22) BY W. C. GALLOWAY, D.C.S., DATED DECEMBER 8, 1910. *FOUND ORIGINAL CORNER, SET 8" DIAMETER BOULDER WITH 2 OAK COUNTY SURVEYOR'S BEARING TREES.*
- [04] CORNER RESTORATION BOOK NO. 1, PAGE 16 BY W. C. GALLOWAY, D.C.S., DATED DECEMBER 10, 1910. *FOUND ORIGINAL CORNER WITH 2 GLO BEARING TREES (STUMPS). SET AN 8" DIAMETER BOULDER WITH 2 NEW OAK BEARING TREES.*
- [05] CORNER RESTORATION NO. 1527. *TRANSCRIBED COPY OF RECORD [04] AND MAY CONTAIN ERRORS AND/OR OMISSIONS.*
- [06] COUNTY SURVEY NO. 838 (OLD NO. 100) MAP BY W. C. GALLOWAY, C.S., DATED SEPTEMBER 2, 1922. *BOULDER 8" DIA.*
- [07] BENTON COUNTY MAP NO. 12-6-00028, PLATED BY WALTER LARSEN, D.C.S., DATED MARCH 17, 1922. *BOULDER 8" DIA.*
- [08] BENTON COUNTY MAP NO. 12-6-00032 BY BENTON COUNTY, NO DATE GIVEN. *BOULDER 8" DIA.*
- [09] COUNTY SURVEY NO. 2876 BY JOHN HANNA, P.L.S., DATED JANUARY 30, 1957. *FOUND 8" BOULDER AND 1 COUNTY SURVEYOR BEARING TREE.*
- [10] COUNTY SURVEY NO. 4560 BY NORMAN WHITFIELD, P.L.S., DATED MAY 1968. *FOUND STONE.*
- [11] COUNTY SURVEY NO. 5397 BY VERLE MOORE, P.L.S., DATED NOVEMBER 1, 1972. *FOUND STONE (8" DIA. BOUNDER) NE. CORNER CEMETARY SET 5/8" I. ROD SOUTH 0.27'*
- [12] COUNTY SURVEY NO. 5625 BY NICK YINGER, P.L.S., DATED FEBRUARY 1974. *FOUND 8" STONE W/+.*
- [13] COUNTY SURVEY NO. 5699 BY RICHARD FAIL, P.L.S., DATED APRIL 20, 1974. *FOUND STONE.*
- [14] COUNTY SURVEY NO. 8372 BY JACK BURRELL, P.L.S., DATED DECEMBER 5, 1989. *NOT TIED OR DESCRIBED.*
- [15] COUNTY SURVEY NO. 8999 BY THEODORE LANGTON, P.L.S., DATED JUNE 19, 1995. *6" X 6" STONE WITH 5/8" ROD ON SOUTH EDGE.*

NOTES:

THIS IS A MICROSOFT WORD 2000 DOCUMENT NAMED "26857040" CREATED FROM A BOILER PLATE DOCUMENT NAMED "HISTORY", WHICH HAS A STYLESHEET NAMED "CORNER" ATTACHED TO IT.

FIRM/AGENCY: BENTON COUNTY SURVEYOR'S OFFICE
ADDRESS: 360 S.W. AVERY AVE. CORVALLIS OR 97333; PH. 766-6821
RESEARCH BY: DAVID M. DEAN, P.L.S.
DATA ENTRY BY: DEAN

BENTON COUNTY CORNER RESTORATION FORM, PAGE 1 OF 2, 126857040R2

SEE CORNER HISTORY FORM FOR RECORDS ETC.

CORNER RESTORATION FIELD BOOK NUMBER 20 PAGE(S) 65 DATE 7/31/2002
TOWNSHIP 12 SOUTH, RANGE 6 WEST, WILLAMETTE MERIDIAN; SECTION 26 CORNER NONE
DONATION LAND CLAIM COLBER BLAIR NO. 57 CORNER WEST-NORTHWEST
CONDITION REPORT _____; REFERENCED OUT _____; RENEWED XX; SURVEYED IN _____

LOCATION AND COMMENTS:

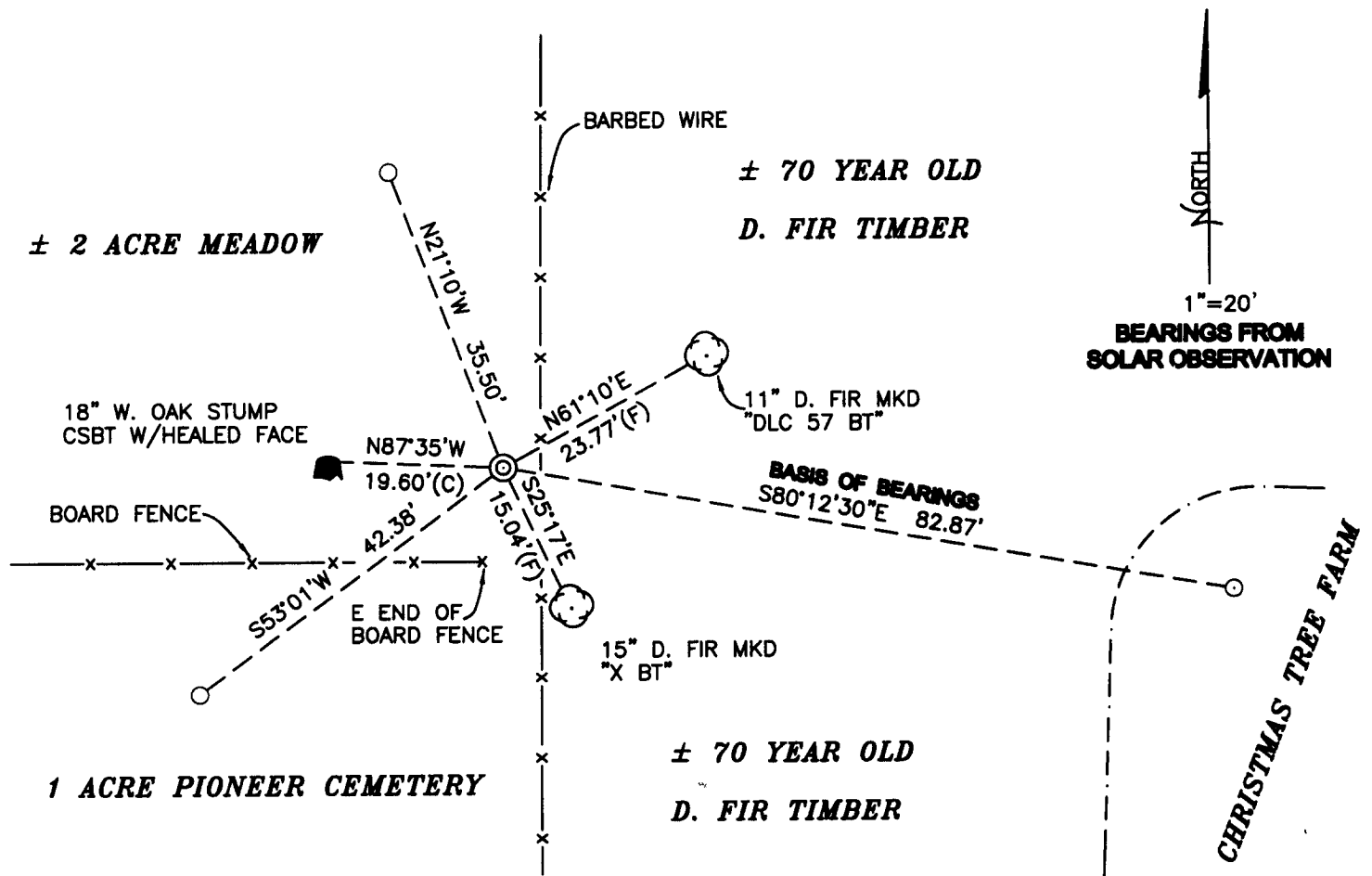
CORNER IS LOCATED IN A FLAT TIMBERED AREA AT THE NORTHEAST CORNER OF A 1 ACRE PIONEER CEMETARY AND 100 FEET WEST OF A CHRISTMAS TREE FARM. TO REACH CORNER FROM THE JUCTION OF PETERSON AND AIRPORT ROAD, BEAR SOUTHERLY AND WESTERLY ON PETERSON ROAD FOR 0.74 MILES; THEN RIGHT (NORTHERLY) ON DRIVEWAY TO 31364 PETERSON ROAD FOR 0.32 MILES AND HOUSE AT 31364 PETERSON ROAD; THEN WESTERLY, NORTHERLY AND WESTERLY ACROSS CHRISTMAS TREE FARM ROAD FOR 0.35 MILES TO NORTHWEST CORNER OF SAID TREE FARM; THEN NORTHWEST ± 80 FEET TO CORNER WHICH IS 4 FEET WEST OF A NORTH/SOUTH BARBED WIRE FENCE. CORNER IS POOR FOR PREMARKING AND GPS CONTROL.

MONUMENTS AND ACCESSORIES FOUND (CONDITION AND SOURCE):

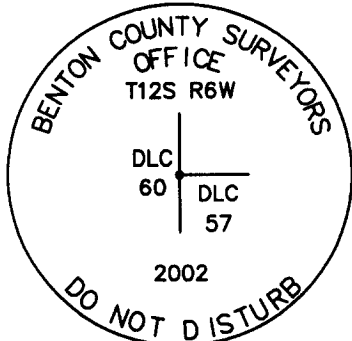
1. FOUND 10" X 8" X 7" STONE, FIRMLY SET WITH A "+" ON TOP AND "CS" ON SOUTH FACE, 4" BELOW GROUND LEVEL FOR CORNER POSITION.
(SET 8" DIAMETER BOULDER PER RECORDS [03] AND [04]).
(FOUND 8" DIAMETER BOULDER PER RECORDS [06] - [09]).
(FOUND STONE PER RECORDS [10], [12] AND [13])
(FOUND STONE AND SET 5/8" IRON ROD SOUTH 0.27 FEET PER RECORD [11]).
(FOUND 6" X 6" STONE WITH 5/8" ROD ON SOUTH EDGE PER RECORD [15]).
2. FOUND 18" OAK STUMP WITH HEALED LOWER FACE, N87°35'W, 19.60 FEET TO CENTER OF GROWTH RINGS. SET ALUMINUM NAIL AND PLASTIC WASHER IN TOP CENTER OF STUMP FOR DISTANCE AND ANGLE MEASUREMENT.
(11" OAK N87°41'W, 19.54 FEET PER RECORDS [03] AND [04]).
(16" OAK N87°41'W, 19.54 FEET PER RECORD [09]).
3. FOUND 5/8" IRON ROD 4" BELOW GROUND LEVEL, SOUTH, 0.27 FEET.
(SET 5/8" IRON ROD SOUTH, 0.27 FEET PER RECORD [11])
(FOUND 5/8" IRON ROD ON SOUTH EDGE OF STONE PER RECORD [15]).

MONUMENT SET (PROCEDURES AND DESCRIPTION):

WE HELD THE "+" ON THE STONE FOR THE TRUE CORNER POSITION. REMOVED STONE AND SET A 2" INSIDE DIAMETER X 36" GALVANIZED IRON PIPE WITH A 3 1/4" BRASS DISK CEMENTED IN THE TOP, FLUSH WITH GROUND LEVEL, MARKED AS SHOWN. BURIED THE STONE ON THE NORTH SIDE OF NEW MONUMENT, 4" BELOW GROUND LEVEL. LEFT THE 5/8" IRON ROD AS FOUND. NO EVIDENCE OF THE GENERAL LAND OFFICE MONUMENT OR ACCESSORIES COULD BE FOUND. NO REMAINING EVIDENCE OF THE SOUTHEAST COUNTY SURVEYOR'S BEARING TREE COULD BE FOUND.



MONUMENT DETAIL



3 1/4" BRASS DISK

LEGEND

- SET 5/8" X 30" REBAR WITH YELLOW PLASTIC CAP MKD "BENTON COUNTY SURVEYOR"
- FOUND MONUMENT AS NOTED
- (F) MEASUREMENT TO FACE
- ⊙ GOVERNMENT MONUMENT SET AS SHOWN
- ⊙ BEARING TREE AS NOTED
- ⊙ COUNTY SURVEYOR BEARING TREE MARKED

NEW ACCESSORIES:

1. SET REBAR (SEE LEGEND) N21°10'W, 35.50 FEET, 6" DEEP.
2. SET REBAR (SEE LEGEND) S80°12'30"E, 82.87 FEET, 6" DEEP. **BASIS OF BEARINGS FOR THIS RESTORATION.**
3. SET REBAR (SEE LEGEND) S53°01'W, 42.38 FEET, 7" DEEP.
4. BLAZED AND SCRIBED AN 11" D. FIR, "DLC 57 BT", N61°10'E, 23.77 FEET TO FACE (24.4 FEET TO CENTER). SET ALUMINUM NAIL AND PLASTIC WASHER IN BOTTOM OF BLAZE FOR DISTANCE AND ANGLE MEASUREMENT.
5. BLAZED AND SCRIBED A 15" D. FIR, "X BT", S25°17'E, 15.04 FEET TO FACE (15.7 FEET TO CENTER). SET ALUMINUM NAIL AND PLASTIC WASHER IN BOTTOM OF BLAZE FOR DISTANCE AND ANGLE MEASUREMENT.
6. SET 6 FOOT ORANGE CARSONITE "SURVEY MARKER" POST 0.5 FEET EAST.

NOTES:

COMPASS DECLINATION IS 20° EAST. ALL MEASURED DISTANCES AND BEARINGS ARE TO THE CENTER OF THE OBJECT, UNLESS OTHERWISE NOTED. ALL BEARING TREES ARE PAINTED AND HAVE A B.T. TAG ATTACHED, FACING THE CORNER UNLESS OTHERWISE NOTED. ALL NEW BEARING TREES HAVE A PLASTIC WASHER (STAMPED "BENTON COUNTY SURVEYOR CORNER RESTORATION") ATTACHED (BY ALUMINUM NAIL) TO THE FACE, BELOW THE "BT" FOR DISTANCE AND ANGLE MEASUREMENT UNLESS OTHERWISE NOTED. THE DRAWING IS FROM AUTOCAD RELEASE 2002.

THIS RESTORATION WAS PERFORMED AT THE DIRECTION AND APPROVAL OF THE BENTON COUNTY SURVEYOR, DM

REGISTERED
PROFESSIONAL
LAND SURVEYOR
David M. Dean 8/26/02

FIRM/AGENCY: BENTON COUNTY SURVEYOR'S OFFICE
ADDRESS: 360 S.W. AVERY AVE. CORVALLIS OR 97333; PH. 766-6821
PRESENT: DAVID M. DEAN, P.L.S. AND DAWIT ABRAHAM, SURVEY TECH.

OREGON
JULY 13, 1984
DAVID M. DEAN
2090

RENEWAL DATE: 12/31/02