

CORNER FILE TRACKING

H:\Survey\Corners\Misc\Filetrac.doc

11/23/98

CORNER NUMBER
126857050

STEP	HISTORY()	RESTORATION()
Form Prepared, DB	8/14/02	8/14/02
Field Inspection, DB	8/16/02	8/16/02
Form Checked, DB	8/25/02	8/25/02
Form Edited, DB	8/26/02	8/26/02
Form Signed, DB	8/26/02	8/26/02
Authorize Payment, DB	—	—
Archive Digital Files	12/9/02	12/9/02
Collect Documents	—	—
Scanned	12/11/02	12/11/02
Copy For Filming		
Filed, DB		
Finish index (count unit)	8/26/02	8/26/02
Filmed (Archived), DB		

(DB) = Entry needed in database (Access).

COMMENTS:

TRAV FM E. D1C56 → N-NW D1C 57
 → INT NW D1C 57 → W-NW D1C 57
 T125 R6W

2-3-4 4) SET SPIKE IN SIDE GRAVEL RD 1" ↓

2-3-51³⁵ 5) FD 3/4" I.R. 8" ↓ FOR W-NW COR BLANK D1C 57 - 12-6

1-2-3

50) FD 3/4" B.D.
 (1-50)

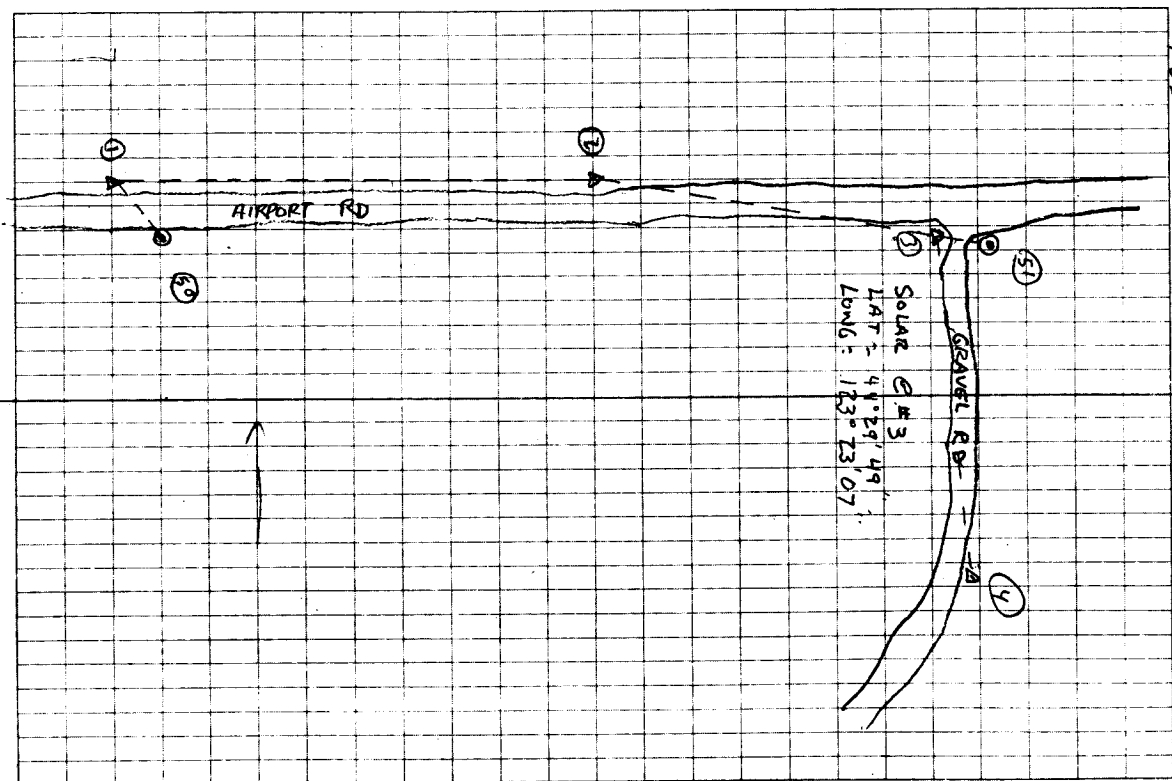
2-1-50 2) SET SPIKE ON N SH. RD.

(1-2) 105602

1) SET SPIKE ON N SH RD

CLEAR, WARM
 58.0°F 29.8" Hg
 LEICA TCR 1105
 TDS

8/9/02
 D. DEAN
 L. UMANA
 20/66

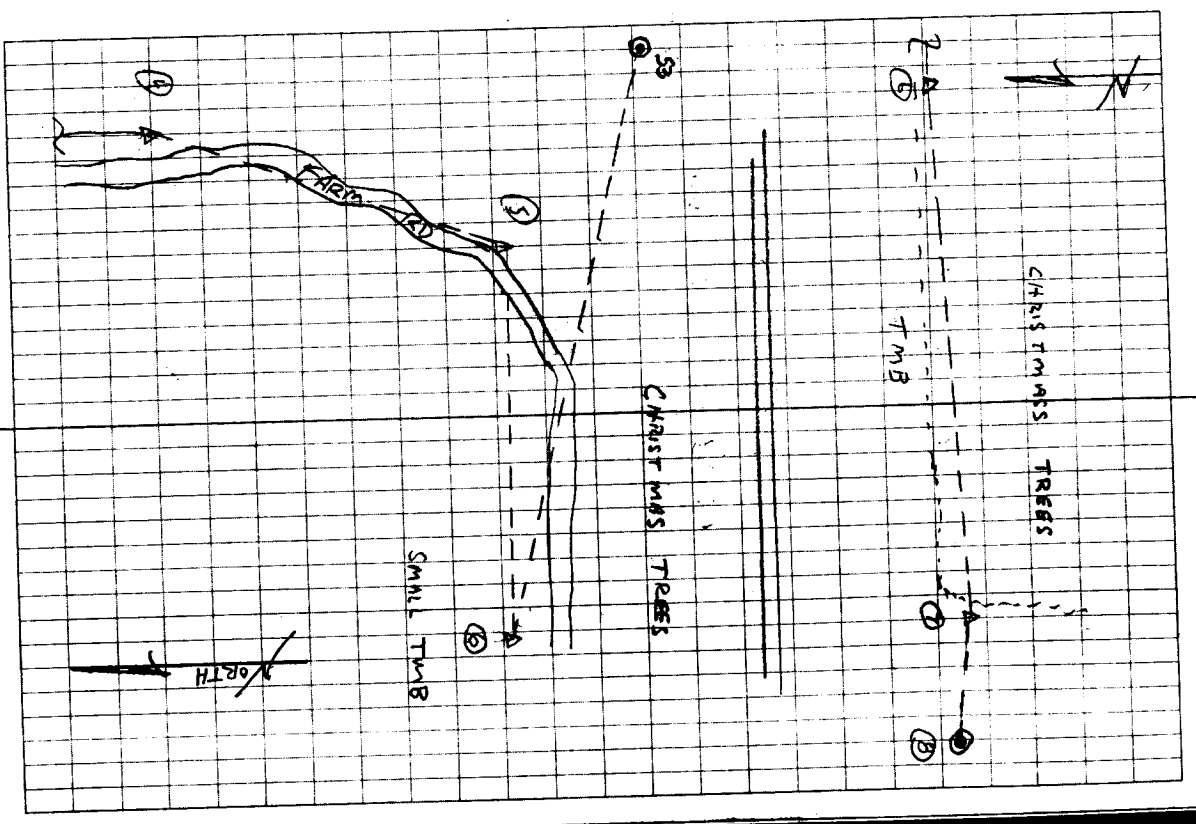


6-7-8
b) Fed 3/4" B.D. @ W-NW DUC 57
BY BENTON CO.

5-6-7
a) Fed 5/8" IR w/IR (BENTON CO.)
W/ REF FOR W-NW DUC 57

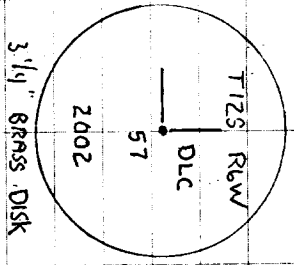
4-5-6
6) SET SPIKE N SIDE DIAT RD.

3-4-5
5) SET SPIKE @ SE SH. RD



REMNUNENTING NW INTERIOR D.L.C. 57 12-6

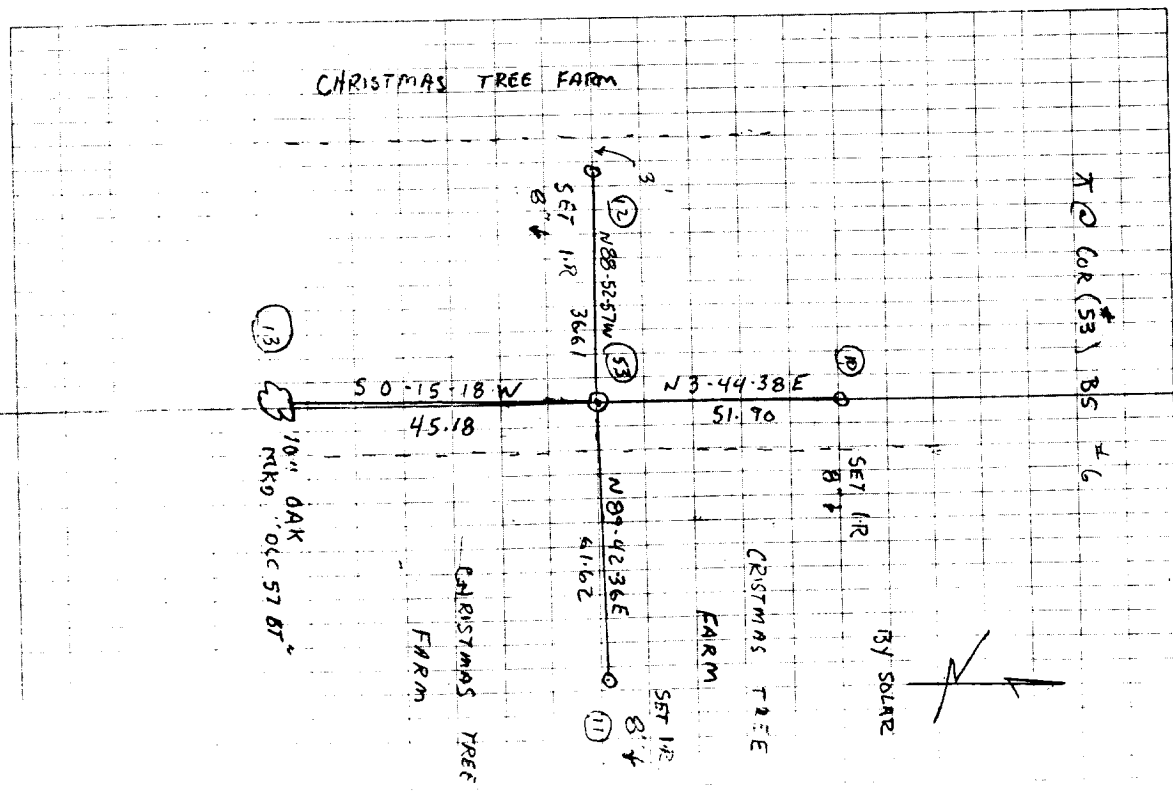
FD 3/4" I.R. 8" ↑ AS SET PER CS 4560.
 NO EVIDENCE OF ORIG. G.L.D. MON. (15" OAK)
 NO OTHER G.L.O ACCESSORIES WERE ESTAB.
 SEARCHED FOR 2 LIVE TREES TO N
 AND 1 LIVE TREE TO W - NO FIND
 UNDER CULT. W/CHRISTMAS TREES.
 HELD MON. AS CALC AND SET PER
 CS 4560.
 SET 2" X 36" G.I.P. W/3/4" BRASS DISK
 OVER 3/4" I.R. 4" ↑ MKD AS SHOWN
 SET 6' CARSONITE POST 0 ± S.



CLD.Y, UARM
 70° E 300" H
 LEICA TCR 1105
 TDS

8/6/02
 D. DEAN
 L. UARM

20/68



DATE 7/30/2002

TOWNSHIP 12 SOUTH, RANGE 6 WEST, WILLAMETTE MERIDIAN; SECTION 26 CORNER NONE
DONATION LAND CLAIM COLBERT P. BLAIR NO. 57 CORNER INTERIOR NORTHWEST

COMMON CORNER(S):

NONE

RECORDS (INFORMATION IN *BOLD ITALICS* IS COUNTY STAFFS' INTERPRETATION OF THE RECORD)
BASED ON EXTENSIVE RESEARCH AND RECOVERY OF EVIDENCE, THIS OFFICE HAS DETERMINED THAT MOST GENERAL LAND OFFICE SURVEYORS MEASURED TO THE FACE OF BEARING TREES.

- [01] GENERAL LAND OFFICE (GLO) NOTES OF THE COLBERT BLAIR DONATION LAND CLAIM (DLC) NO. 57 BY DENNIS HATHORN, D.S., DATED FEBRUARY 20, 1855. ***MARKED AN OAK, 15" DIAMETER FOR INTERIOR COR.***
- [02] COUNTY SURVEY NO. 4560 BY NORMAN WHITFIELD, P.L.S., DATED MAY 1968. ***SET 3/4" ROD.***
- [03] COUNTY SURVEY NO. 8999 BY THEODORE LANGTON, P.L.S., DATED JUNE 19, 1995. ***NOT TIED OR DESCRIBED.***

NOTES:

THIS IS A MICROSOFT WORD 2000 DOCUMENT NAMED "26857050" CREATED FROM A BOILER PLATE DOCUMENT NAMED "HISTORY", WHICH HAS A STYLESHEET NAMED "CORNER" ATTACHED TO IT.

FIRM/AGENCY: BENTON COUNTY SURVEYOR'S OFFICE
ADDRESS: 360 S.W. AVERY AVE. CORVALLIS OR 97333; PH. 766-6821
RESEARCH BY: DAVID M. DEAN, P.L.S.
DATA ENTRY BY: DEAN

BENTON COUNTY CORNER RESTORATION FORM, PAGE 1 OF 1, 126857050R1

SEE CORNER HISTORY FORM FOR RECORDS ETC.

CORNER RESTORATION FIELD BOOK NUMBER 20 PAGE(S) 68 DATE 08/16/2002
TOWNSHIP 12 SOUTH, RANGE 6 WEST, WILLAMETTE MERIDIAN; SECTION 26 CORNER NONE
DONATION LAND CLAIM COLBERT BLAIR NO. 57 CORNER INTERIOR NW
CONDITION REPORT ; REFERENCED OUT ; RENEWED XX; SURVEYED IN

LOCATION AND COMMENTS:

CORNER IS LOCATED ON A GENTLE NORTH SLOPE BETWEEN 2 CHRISTMAS TREE FARMS. TO REACH CORNER FROM THE JUNCTION OF PETERSON AND AIRPORT ROAD, TRAVEL SOUTHERLY AND WESTERLY ON AIRPORT ROAD FOR 0.77 MILES; THEN LEFT (SOUTH) ON GRAVEL ROAD FOR ±600 FEET AND PARK; THEN S70°E, 300 FEET TO CORNER. CORNER IS GOOD FOR PREMARKING AND GPS CONTROL.

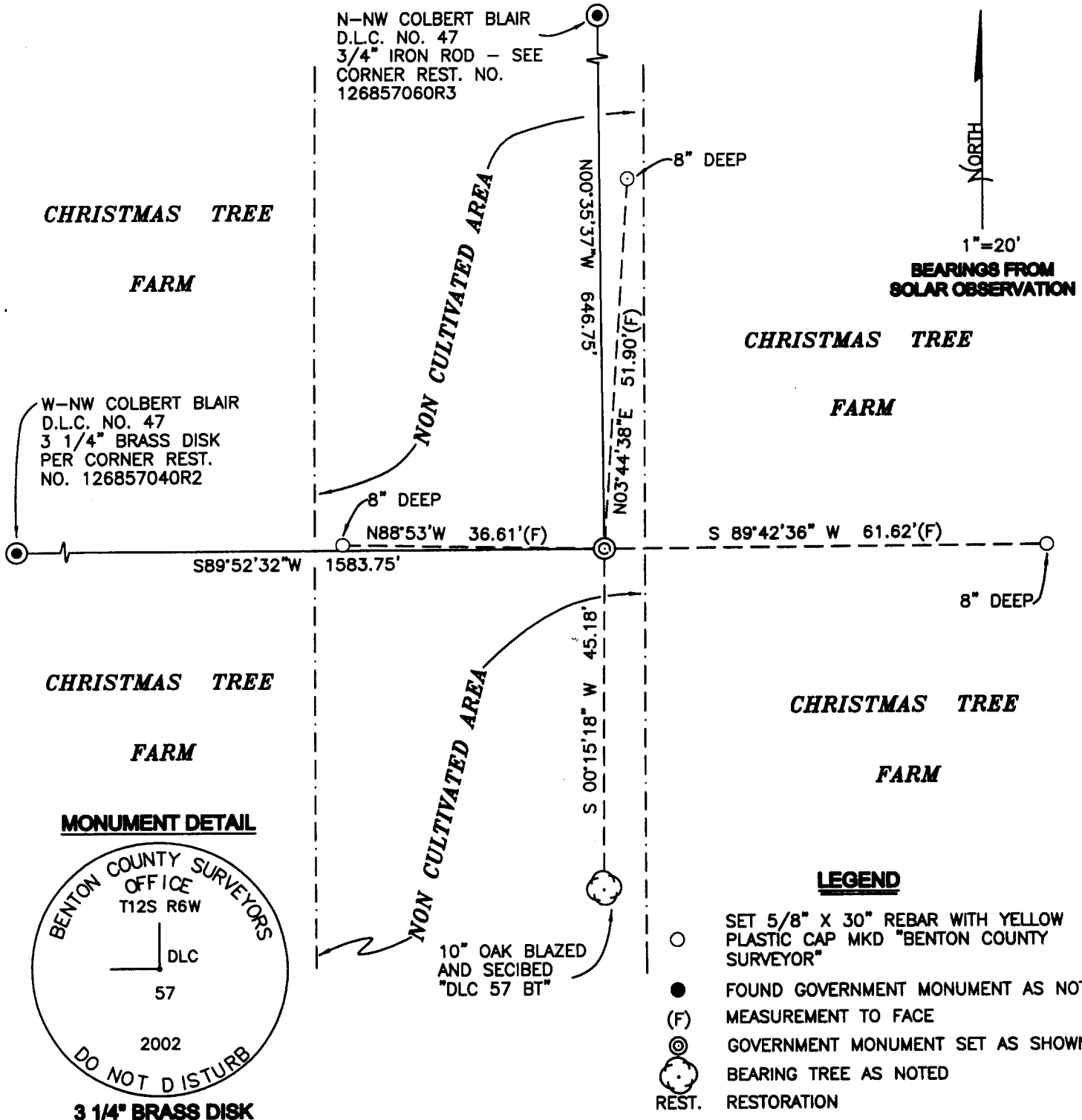
MONUMENTS AND ACCESSORIES FOUND (CONDITION AND SOURCE):

1. FOUND 3/4" IRON ROD, 8" BELOW GROUND LEVEL FOR CORNER.
(SET 3/4" ROD PER RECORD [02]).
2. FOUND N-NW CORNER OF THE COLBERT BLAIR D.L.C. NO. 57, A 3/4" IRON ROD, 4" BELOW GROUND LEVEL, N0°35'37"W, 646.75 FEET. CORNER IS IN DITCH LINE ON THE SOUTH SIDE OF AIRPORT ROAD.
(SET 3/4" ROD, N0°35'W, 645.74 FEET PER RECORD [02]).
3. FOUND W-NW CORNER COLBERT BLAIR, A 3 1/4" BRASS DISK ON A 2" GALVANIZED IRON PIPE PER CORNER RESTORATION NO. 126857040R2, S89°52'32"W, 1583.75 FEET.
(FOUND STONE, S89°53'W, 1584.07 FEET PER RECORD [02]).

MONUMENT SET (PROCEDURES AND DESCRIPTION):

NO EVIDENCE OF THE ORIGINAL GLO MONUMENT REMAINS (15" DIAMETER OAK). WE SEARCHED FOR TWO LINE TREES TO THE NORTH AND ONE LINE TREE TO THE WEST PER GLO RECORD WITHOUT SUCCESS. WE HAVE DETERMINED THIS CORNER TO BE LOST. THE STRONGEST RESOLUTION FOR THE POSITION OF THIS CORNER WOULD BE A BEARING/BEARING INTERSECTION, MAKING THE LINES PARALLEL TO THE EAST LINE OF THE CLEMENT BARKER DLC NO. 60 AND PARALLEL TO THE SOUTH LINE OF THE F. M. IRWIN DLC NO 56. RECORD NO. [02] APPEARS TO HAVE USED THIS RESOLUTION, BUT SET HIS MONUMENT 1 FOOT SOUTHERLY FROM HIS CALCULATED POSITON. BASED ON THE LONGEVITY AND GOOD FAITH EFFORT TO POSITION THIS CORNER BY RECORD [02], WE HAVE HELD THE 3/4" IRON ROD FOR THE TRUE CORNER POSTION.

SET A 2" GALVANIZED IRON PIPE OVER THE SAID 3/4" IRON ROD WITH A 3 1/4" BRASS DISK CEMENTED IN THE TOP, 4" BELOW GROUND LEVEL, MARKED AS SHOWN ON PAGE 2 OF THIS REPORT.



NEW ACCESSORIES:

1. SET REBAR (SEE LEGEND) N3°44'38"E, 51.90 FEET, 8" BELOW GROUND LEVEL.
2. SET REBAR (SEE LEGEND) N89°42'36"E, 61.62 FEET, 8" BELOW GROUND LEVEL.
3. SET REBAR (SEE LEGEND) N88°53'W, 36.61 FEET, 8" BELOW GROUND LEVEL.
4. FACE SCRIBED A 10" OAK, "DLC 57 BT", S0°15'18"W, 45.18 FEET TO FACE. SET ALUMINUM NAIL AND PLASTIC WASHER IN BOTTOM OF BLAZE FOR DISTANCE AND ANGLE MEASUREMENT.
5. SET 6 FOOT ORANGE CARSONITE "SURVEY MARKER" POST 0.5 FEET SOUTH.

NOTES:

COMPASS DECLINATION IS 20° EAST. ALL MEASURED DISTANCES AND BEARINGS ARE TO THE CENTER OF THE OBJECT, UNLESS OTHERWISE NOTED. ALL BEARING TREES ARE PAINTED AND HAVE A B.T. TAG ATTACHED, FACING THE CORNER UNLESS OTHERWISE NOTED. ALL NEW BEARING TREES HAVE A PLASTIC WASHER (STAMPED "BENTON COUNTY SURVEYOR CORNER RESTORATION") ATTACHED (BY ALUMINUM NAIL) TO THE FACE, BELOW THE "BT" FOR DISTANCE AND ANGLE MEASUREMENT UNLESS OTHERWISE NOTED. THE DRAWING IS FROM AUTOCAD RELEASE 2002.

THIS RESTORATION WAS PERFORMED AT THE DIRECTION AND APPROVAL OF THE BENTON COUNTY SURVEYOR, RW

FIRM/AGENCY: BENTON COUNTY SURVEYOR'S OFFICE
ADDRESS: 360 S.W. AVERY AVE. CORVALLIS OR 97333; PH. 766-6821
PRESENT: DAVID M. DEAN, P.L.S. AND LUIS UMANA, SURVEY TECH.

REGISTERED
PROFESSIONAL
LAND SURVEYOR

David M. Dean 8/26/02

OREGON
JULY 13, 1984
DAVID M. DEAN
2090

RENEWAL DATE: 12/31/02