

126860030

CORNER FILE TRACKING

S:\Survey Corners\CORNERS\Templates\Filetrac2.doc
10/04/2010

CORNER NUMBER
126860030

STEP	HISTORY()	RESTORATION()
Form Prepared, DB	12/20/10	12/22/10
Field Inspection, DB	12/21/10	12/21/10
Finish index (count unit)	12/21/10	12/21/10
Counter Index	12/21/10	12/21/10
GIS Index Form	12/22/10	12/22/10
Checked, DB	12/23/10	12/23/10
Form Edited, DB	12/23/10	12/23/10
Form Signed, DB	12/23/10	12/23/10
Authorize Payment, DB	—	—
Archive Digital Files	12/27/10	12/27/10
Collect Documents	12/27/10	12/27/10
PDF File	12/27/10	12/27/10
Copy For Filming	12/27/10	12/27/10
Scanned (pdf to laserfiche)	12/27/10	12/27/10
Filmed (Archived), DB		
Filed, DB		

(DB) = Entry needed in database (Access).

COMMENTS:

DATE 12/20/2010TOWNSHIP 12 SOUTH, RANGE 6 WEST, WILLAMETTE MERIDIAN; SECTION 34 CORNER NONE
DONATION LAND CLAIM CLEMENT BAKER NO. 60 CORNER EAST-NORTHEAST**COMMON CORNER(S):**NORTHWEST CORNER SANFORD H. WHITE DLC NO. 61
POINT ON SOUTH LINE OF THE COLBERT P. BLAIR DLC NO. 57**RECORDS (INFORMATION IN BOLD ITALICS IS COUNTY STAFFS' INTERPRETATION OF THE RECORD)**

BASED ON EXTENSIVE RESEARCH AND RECOVERY OF EVIDENCE, THIS OFFICE HAS DETERMINED THAT MOST GENERAL LAND OFFICE SURVEYORS MEASURED TO THE FACE OF BEARING TREES.

- [01] GENERAL LAND OFFICE (GLO) NOTES OF THE SANFORD H. WHITE DONATION LAND CLAIM (DLC) 61 BY DENNIS HATHORN, D.S., NO DATE GIVEN. *SET POST FOR N.W. COR ON S LINE OF CLAIM 57, FROM WHICH A FIR 30 IN DIA BEARS N4°E, 41 LKS (27.06 FEET) A COR OF CLAIM 60.*
- [02] GLO NOTES OF THE CLEMENT BARKER DLC 60 BY DENNIS HATHORN, D.S., NO DATE GIVEN. *NORTH . . . TO NW COR CLAIM 61.*
- [03] COUNTY SURVEY 196 BY W. C. GALLOWAY, D.C.S., DATED DECEMBER 8, 1910. *TO WHITE N.W. CL. 61. SANDSTONE 6" X 16" X 16". FIR 30", N4°E, 0.41 CHS. (27.06 FEET) STANDING.*
- [04] BENTON COUNTY CORNER RESTORATION BOOK 1, PAGE 16 BY W. C. GALLOWAY, D.C.S., DATED DECEMBER 10, 1910. *SET SANDSTONE 6" X 16" X 16". FIR 30" DIA. BEARS N4°E, 0.41 CHS (27.06 FEET) STANDING.*
- [05] BENTON COUNTY CORNER RESTORATION 1542. *THIS IS A TRANSCRIBED COPY OF RECORD [04] AND MAY CONTAIN ERRORS AND/OR OMISSIONS*
- [06] COUNTY ROAD NO. 303 (ROUTE 24-01) BY BURT WILKES, D.C.S., DATED MARCH 1, 1913. *S89°55'W, 21.126 CHS (1394.32 FEET) . . . TO A SANDSTONE WHICH IS THE N.W. COR. OF S. H. WHITE DLC NO. 61.*
- [07] COUNTY SURVEY 398 (OLD NO. 139) FIELD NOTES (FIELD BOOK 11, PAGE 33) BY F. M. WILKES, D.C.S., DATED OCTOBER 2, 1913. *BEG AT REEST NW SANFORD WHITE CL 61.*
- [08] COUNTY SURVEY 398 (OLD NO. 139) MAP, DATED OCTOBER 5, 1913. *STONE.*
- [09] BENTON COUNTY MAP 12-6-00032 BY BENTON COUNTY SURVEYOR'S OFFICE, NO DATE GIVEN. *SANDSTONE 6" X 6" X 6".*
- [10] BENTON COUNTY SURVEY 2876 BY J. W. HANNA, P.L.S., DATED JANUARY 30, 1957. *FD SANDSTONE 6" X 16" X 16". FIR STUMP 30" DIA. BRS N4°E, 27.06 FEET. SET SLANTED 1 1/4" PIPE OVER TOP. NW COR CL. 61.*
- [11] COUNTY SURVEY 3933 BY CURTIS C. HANSON, C.S., DATED JUNE 6, 1964. *CORNER TIED BUT NOT DESCRIBED.*
- [12] COUNTY SURVEY 4384 BY FRED LEMKE, P.L.S., DATED APRIL 22, 1967. *N.W. CORNER SANFORD WHITE CLAIM NO. 61. FD IRON PIPE LEANING OVER STONE. SET NAIL IN STONE.*
- [13] COUNTY SURVEY 4560 BY N. C. WHITFIELD, P.L.S., DATED MAY 1968. *FD 1 1/4" PIPE.*
- [14] COUNTY SURVEY 5210 BY N. C. WHITFIELD, P.L.S., DATED FEBRUARY 1972. *CORNER TIED BUT NOT DESCRIBED.*
- [15] COUNTY SURVEY 5625 BY NICK A. YINGER, P.L.S., DATED FEBRUARY 1974. *FD STONE W/1 1/4" PIPE OVER.*
- [16] COUNTY SURVEY 5699 BY RICHARD W. FAIL, P.L.S., DATED APRIL 20, 1974. *FD 3/4" PIPE. NW COR. DLC 61.*
- [17] COUNTY SURVEY 5739 BY NICK A. YINGER, P.L.S., DATED MAY 1974. *FD STONE W/1 1/4" PIPE OVER.*
- [18] COUNTY SURVEY 5804 BY KENNETH M. WIGHTMAN, P.L.S., DATED DECEMBER 4, 1974. *CORNER TIED BUT NOT DESCRIBED.*

- [19] COUNTY SURVEY 5839 BY NICK A. YINGER, P.L.S., DATED MARCH 1975. *FD STONE W/1 1/4" PIPE OVER.*
- [20] COUNTY SURVEY 5909 BY NICK A. YINGER, P.L.S., DATED OCTOBER 29, 1975. *FD 1 1/4" PIPE.*
- [21] COUNTY SURVEY 6353 BY NICK A. YINGER, P.L.S., DATED MAY 3, 1977. *FD NAIL IN STONE.*
- [22] COUNTY SURVEY 7599 BY MICHAEL D. LEMKE, P.L.S., DATED JANUARY 15, 1984. *FOUND AS PER C.S. 4384 – 1 1/4" IRON PIPE LEANING OVER NAIL IN STONE.*
- [23] BENTON COUNTY RESTORATION 3355 BY DANNA L. INGRAM, C.S., DATED DECEMBER 6, 1985. *FOUND 6" X 16" X ? STONE W/NAIL PER C.S. 4384 AND 1 1/4" I.D. IRON PIPE SLANTED OVER TOP PER C.S. 2876. 15" GRAND FIR, N32°27'W, 45.3 FEET, BLAZED & SCRIBED "BT"; 13" GRAND FIR, N58°58'E, 61.0 FEET, BLAZED & SCRIBED "BT".*
NOTE: FROM LOOSE LEAF FIELD NOTES BY PETE MC DOWELL AND ANDY FOSTER, DATED DECEMBER 6, 1985. *NAIL IN SANDSTONE ROCK APPROX. 5" NORTH OF 1 1/4" PIPE.*
- [24] COUNTY SURVEY 8103 BY NORMAN D. SPRINGER, P.L.S., DATED FEBRUARY 10, 1988. *FOUND 1 1/4" IRON PIPE.*
- [25] COUNTY SURVEY 10,065 BY THEODORE JAMES LANGTON, P.L.S., DATED OCTOBER 20, 2005. *1 1/4" PIPE PER BCCR 3355.*

NOTES:

THIS IS A MICROSOFT WORD 2003 DOCUMENT NAMED "26860030" CREATED FROM A BOILER PLATE DOCUMENT NAMED "HISTORY", WHICH HAS A STYLESHEET NAMED "CORNER" ATTACHED TO IT.

FIRM/AGENCY: BENTON COUNTY SURVEYOR'S OFFICE
ADDRESS: 360 S.W. AVERY AVE. CORVALLIS OR 97333; PH. 766-6821
RESEARCH BY: DAVID M. DEAN, P.L.S.
DATA ENTRY BY: SAME

BENTON COUNTY CORNER RESTORATION FORM, PAGE 1 OF 2, 126860030R3

SEE CORNER HISTORY FORM FOR RECORDS ETC.

CORNER RESTORATION FIELD BOOK NUMBER 29 PAGE(S) 15 DATE 12/21/2010
TOWNSHIP 12 SOUTH, RANGE 6 WEST, WILLAMETTE MERIDIAN; SECTION 35 CORNER NONE
DONATION LAND CLAIM CLEMENT BARKER NO. 60 CORNER EAST - NORTHEAST
CONDITION REPORT _____; REFERENCED OUT _____; RENEWED XX; SURVEYED IN _____

LOCATION AND COMMENTS:

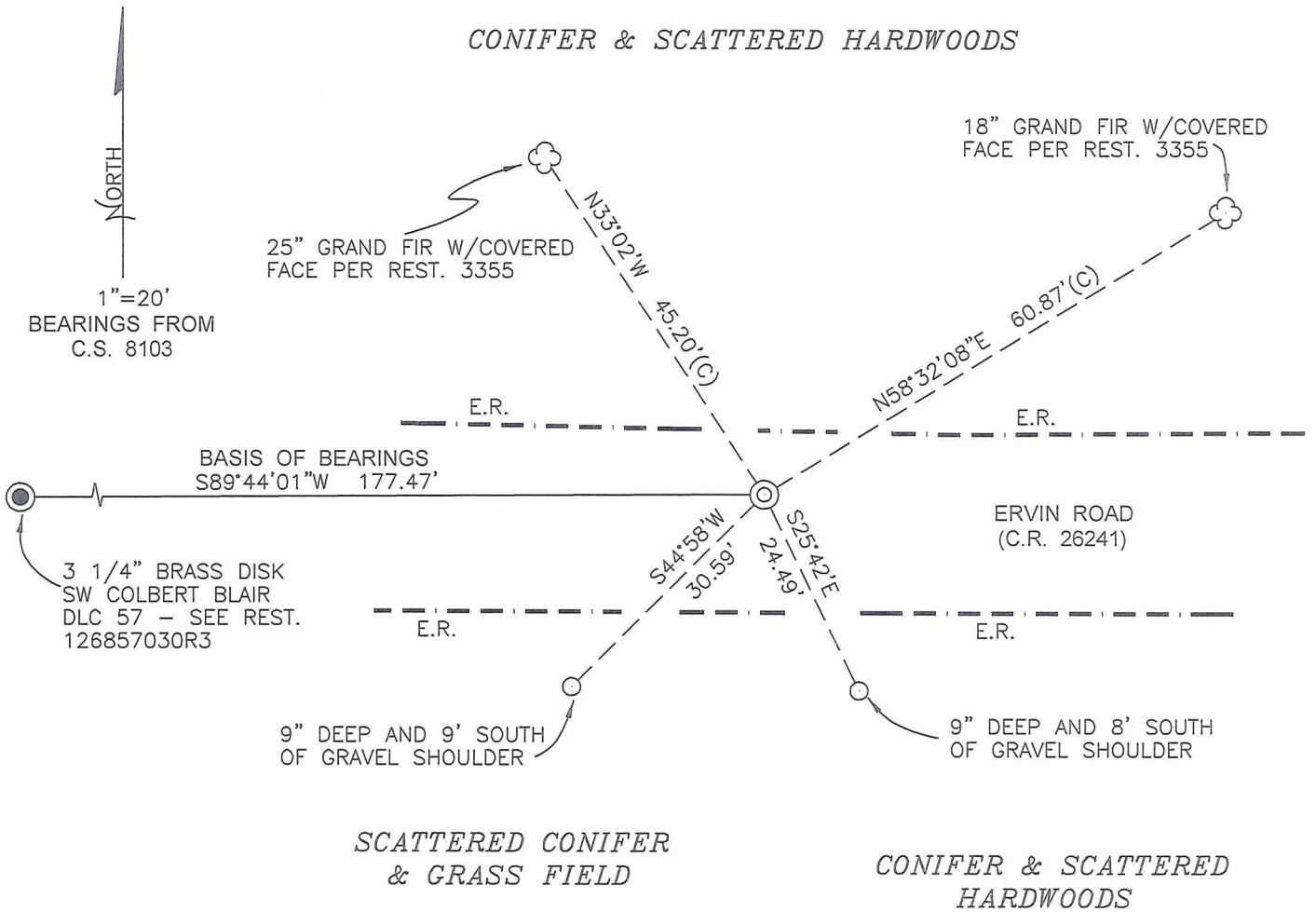
CORNER IS LOCATED IN ERVIN ROAD (COUNTY ROAD 26241). TO REACH CORNER FROM THE JUNCTION OF PETERSON AND ERVIN ROADS, TRAVEL WESTERLY ON ERVIN ROAD FOR 0.51 MILES TO CORNER. CORNER IS GOOD FOR PREMARKING AND GPS CONTROL.

MONUMENTS AND ACCESSORIES FOUND (CONDITION AND SOURCE):

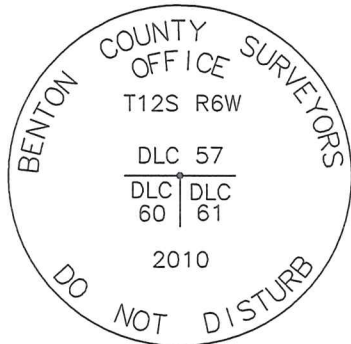
1. FOUND 14" X 14" X 6" UNMARKED SANDSTONE WITH A NAIL IN TOP CENTER OF STONE, 14" BELOW ROAD SURFACE FOR CORNER POSITION. FOUND A 1 1/4" X 22" IRON PIPE, S13°06'W, 0.47 FEET FROM NAIL IN STONE AND 10" BELOW GROUND LEVEL. IRON PIPE WAS TIPPED SOUTH WESTERLY, WHICH WE REMOVED FROM THE AREA.
(SET POST PER RECORD [01]).
(SET 6" X 16" X 16" SANDSTONE FROM GLO BEARING TREE PER RECORDS [03] AND [04]).
(SANDSTONE PER RECORD [06]).
(STONE PER RECORD [08]).
(6" X 6" X 6" SANDSTONE PER RECORD [09]).
(FOUND 6" X 16" X 16" SANDSTONE AND SET 1 1/4" PIPE OVER TOP PER RECORD [10]).
(FOUND IRON PIPE LEANING OVER STONE, SET NAIL IN STONE PER RECORD [12]).
(FOUND 1 1/4" PIPE PER RECORDS [13], [20], [24] AND [25]).
(FOUNID STONE WITH 1 1/4" PIPE OVER PER RECORDS [15], [17] AND [19]).
(FOUND 3/4" PIPE PER RECORD [16]).
(FOUND NAIL IN STONE PER RECORD [21]).
(1 1/4" IRON PIPE LEANING OVER NAIL IN STONE PER RECORD [22]).
(FOUND 6" X 16" X ? STONE WITH NAIL AND 1 1/4" I.D. IRON PIPE SLANTED OVER TOP PER RECORD [23]).
2. FOUND 3 1/4" BRASS DISK ON 2" GALVANIZED IRON PIPE, S89°44'01"W, 177.47 FEET FOR THE SOUTHWEST CORNER OF THE COLBERT P. BLAIR DLC 57, AS SET PER RESTORATION 126857030R3.
(WEST 2.68 CHAINS [176.88 FEET] PER RECORD [02]).
(S89°18'W, 2.694 CHAINS [177.80 FEET] PER RECORD [03]).
(S89°24'W, 2.694 CHAINS [177.80 FEET] PER RECORD [06]).
(WESTERLY, 2.694 CHAINS [177.80 FEET] PER RECORD [09]).
(S89°17'W, 177.80 FEET PER RECORD [10]).
(S89°37'W, 177.72 FEET PER RECORD [13]).
(S89°45'20"W, 177.80 FEET PER RECORDS [15], [17] - [19]).
(WESTERLY 177.80 FEET PER RECORD [16]).
(S89°44'01"W, 177.70 FEET PER RECORD [24]).
3. FOUND 25" GRAND FIR, N33°02'W, 45.20 FEET TO CENTER WITH COVERED FACE. SET ALUMINUM NAIL AND PLASTIC WASHER IN SOUTHWEST BASE FOR DISTANCE MEASUREMENT.
(15" GRAND FIR, N32°27'W, 45.3 FEET, BLAZED AND SCRIBED "BT" PER RECORD [23]).
4. FOUND 18" GRAND FIR, N58°32'08"E, 60.87 FEET TO CENTER WITH COVERED FACE. SET ALUMINUM NAIL AND PLASTIC WASHER IN NORTHWEST BASE FOR DISTANCE MEASUREMENT.
(13" GRAND FIR, N58°58'E, 61.0 FEET, BLAZED AND SCRIBED "BT" PER RECORD [23]).

MONUMENT SET (PROCEDURES AND DESCRIPTION):

THE NAIL IN THE RECOVERED SANDSTONE PER RECORD [12] WAS POSITIONED IN THE CENTER HIGH POINT OF STONE, WHICH WE HELD AS THE TRUE CORNER POSITON. THE 1 1/4" IRON PIPE SET PER RECORD [10] BEARS S13°06'W, 0.47 FEET FROM SAID NAIL IN STONE. WE REMOVED THE PIPE AND SANDSTONE AND SET A 2" X 31 1/2" GALVANIZED IRON PIPE WITH A 3 1/4" BRASS DISK CONCRETED IN THE TOP, 8" BELOW ROAD SURFACE AND MARKED AS SHOWN ON PAGE 2 OF 2. REMOVED THE 1 1/4" IRON PIPE FROM THE AREA. BROKE STONE IN PIECES AND PLACED AROUND NEW MONUMENT AT A DEPTH OF 12" TO 24" BELOW ROAD SURFACE.



MONUMENT DETAIL



3 1/4" BRASS DISK

LEGEND

- SET 5/8" X 30" REBAR WITH YELLOW PLASTIC CAP MARKED "BENTON COUNTY SURVEYOR"
- (C) MEASUREMENT TO CENTER
- ⊙ GOVERNMENT MONUMENT SET AS SHOWN
- ⊙ GOVERNMENT MONUMENT FOUND AS SHOWN
- ☼ BEARING TREE AS NOTED
- C.S.B.T. COUNTY SURVEYORS BEARING TREE
- GLO GENERAL LAND OFFICE
- E.R. EDGE OF GRAVEL ROAD
- DLC DONATION LAND CLAIM
- REST. RESTORATION

NEW ACCESSORIES:

1. SET REBAR (SEE LEGEND) S25°42'E, 24.49 FEET, 9" BELOW GROUND LEVEL AND 8 FEET SOUTH OF GRAVEL SHOULDER.
2. SET REBAR (SEE LEGEND) S44°58'W, 30.59 FEET, 9" BELOW GROUND LEVEL AND 9 FEET SOUTH OF GRAVEL SHOULDER.

NOTES:

COMPASS DECLINATION IS 20° EAST. ALL MEASURED DISTANCES AND BEARINGS ARE TO THE CENTER OF THE OBJECT, UNLESS OTHERWISE NOTED. ALL BEARING TREES ARE PAINTED AND HAVE A B.T. TAG ATTACHED, FACING THE CORNER UNLESS OTHERWISE NOTED. ALL NEW BEARING TREES HAVE A PLASTIC WASHER (STAMPED "SURVEYOR MARKER DO NOT REMOVE") ATTACHED BY AN ALUMINUM NAIL TO THE FACE, BELOW THE "BT" FOR DISTANCE AND ANGLE MEASUREMENT UNLESS OTHERWISE NOTED. THE DRAWING IS FROM AUTOCAD RELEASE 2010.

THIS RESTORATION WAS PERFORMED AT THE DIRECTION AND APPROVAL OF THE BENTON COUNTY SURVEYOR *[Signature]*

FIRM/AGENCY: BENTON COUNTY SURVEYOR'S OFFICE
 ADDRESS: 360 S.W. AVERY AVE. CORVALLIS, OR. 97333; PH. 766-6821
 PRESENT: DAVID M. DEAN, P.L.S. AND DAVE MALONE, P.L.S.
 EQUIPMENT: NIKON NIVO 3.C WITH SURVEY PRO ONBOARD

12/23/10 *David M. Dean*

REGISTERED
 PROFESSIONAL
 LAND SURVEYOR

OREGON
 JULY 13, 1984
 DAVID M. DEAN
 2090

RENEWAL DATE: 12/31/11

Survey #100
W.C.G.

✓ S.E. cor. of Clement Barker D.L.C. # 60 Tp. 12-6.
Set stone 5"x6"x10" orig. cor. stump hole.
Fir 20" in dia. bears S. 37° 35' E. .625'
Oak 15" " " " N. 16° W. .82' std.
Witnesses J. M. Henkle, H. Plagman + A. Majestrik Dec. 10, 1910.

✓ N.W. of S.H. White D.L.C. #61. Tp. 12-6.
Set sandstone 6"x16"x16"
Fir 30" in dia. bears N. 4° E. .41' std.
Witnesses Fred Seemet, A. Majestrik + H. Plagman Dec. 10, 1910.

✓ S.W. cor. of C.P. Blair D.L.C. # 57 Tp. 12-6.
Set sandstone 6"x14"x14" orig. cor.
Fir 14" in dia. bears N. 34° 17' E. .280'
" 18" " " " S. 40° E. .89' std.
" 18" " " " N. 20° 37' W. .152'
Witnesses Fred Seemet, A. Majestrik + H. Plagman Dec. 10, 1910.

✓ N.E. cor. of S. H. White D.L.C. #61. Tp. 12-6.
Mkd. stone 8"
Oak 18" N. 22° E. 3.57' std.
Witnesses G. F. Miller, Fred Seemet + A. Majestrik. Dec. 14, 1910.

" N.W. cor. of C.P. Blair D.L.C. # 57 Tp. 12-6.
Set boulder 8" in dia. two stumps std. orig. cor.
Oak 12" in dia. bears S. 30' E. .877'
" 11" " " " N. 87° 41' W. .296'
Witnesses Fred Seemet, A. Majestrik + H. Plagman Dec. 10, 1910.

#101 ✓ 1/4 sec. cor. between secs. 27 & 28 Tp. 12-6.
W.C.G. set 3/8" steel rod.
Oak 18" in dia. bears S. 64° 53' E. 2.410'
" 15" " " " N. 32° 13' W. 4.932'
Witnesses Elmer Benton + Robert Sandiford Dec. 17, 1910.

✓ Sec. cor. to secs. 27, 28, 33 & 34 Tp. 12-6.
Set L iron. orig. cor.
Fir 40" in dia. bears N. 71° E. .89' std.
" 36" " " " S. 31° E. .17' "
" 15" " " " S. 64° 40' W. .274'
" 36" " " " N. 10° W. .12' "
Witnesses Elmer Benton + Robert Sandiford Dec. 15, 1910.

" 1/4 sec. cor. bet. secs. 27 & 34 Tp. 12-6.
Set 1/2 pipe orig. cor.
Fir 20" in dia. bears S. 21° 21' W. .968'
" 36" " " " N. 37° W. .27' std.
Witnesses Elmer Benton + Robert Sandiford Dec. 17, 1910.

Northwest of S. H. White DLC 61, Twp. 12-6

1542

Reestablishment by W. C. Gallaway

December 10, 1910

Set sandstone 6" x 16" x 16"

Fir 30" in diam bears N. 4° E .41 chains (standing)

Witnesses Fred Seemet, A. Majestrik, and H. Hagman

5

T. 12 S, R. 6 W, W. B. & M., BENTON COUNTY, OREGON

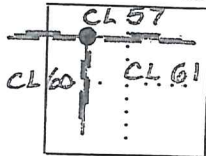
SECTION EASTERLY NORTHEAST CORNER
CLEMENT BARKER DLC #60

REPORTED BY PETE McDOWELL

TITLE SURVEY TECH.

DATE 12/6/1985

Danna L. Ingram B.C.S.



● OFFICIAL CORNER FOUND

○ CORNER SET

DLC CORNER COMMON TO SEC. 60, 61, & _____

DESCRIBE

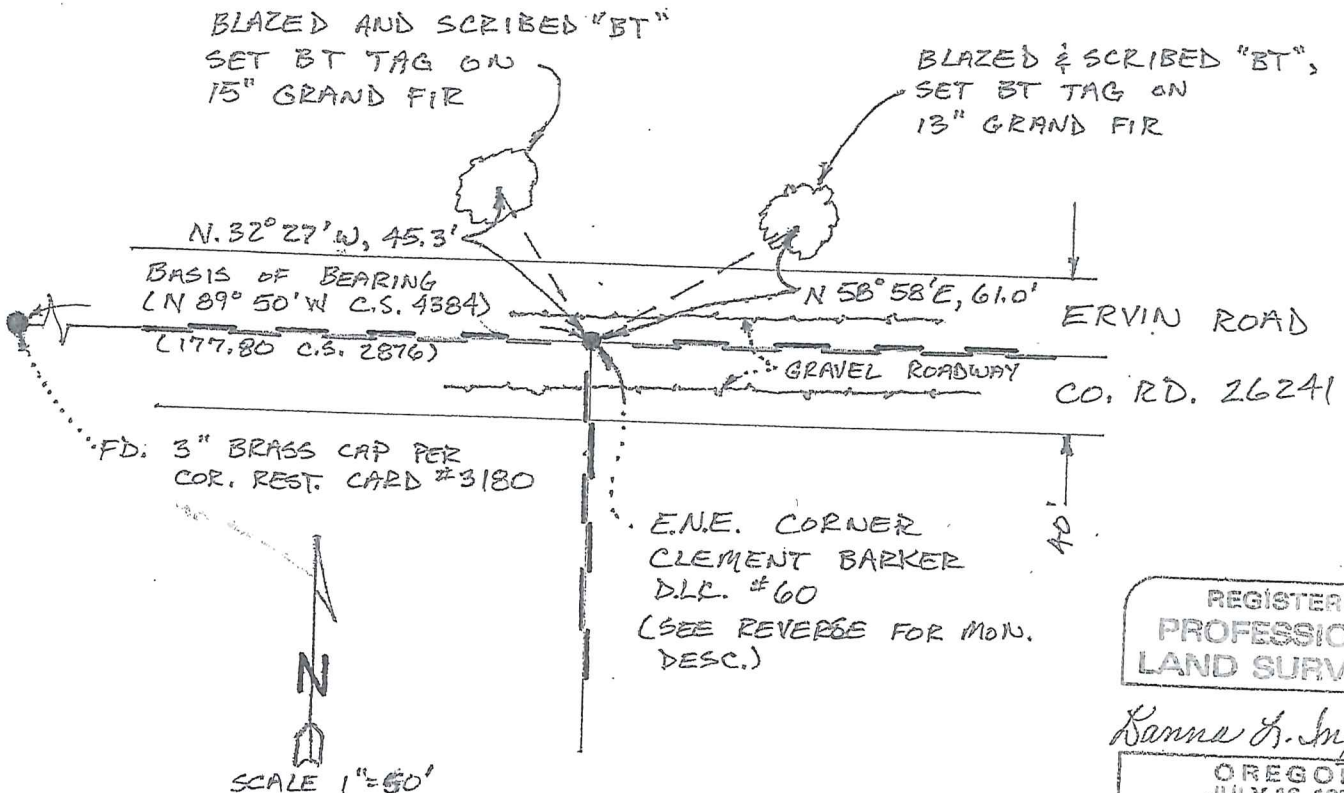
ADDITIONAL INFORMATION

FOUND 6" X 1/2" X 7" STONE PER CORNER
CARD #1542 W/ NAIL PER C.S. 4384 AND
1/4" I.D. IRON PIPE SLANTED OVER TOP
PER C.S. 2876.

LEGIBLE MARKS ON BEARING OBJECTS

	BLAZED & SCRIBED "BT"	BLAZED & SCRIBED "BT"		
KIND	GRAND FIR	GRAND FIR		
SIZE	15"	13"		
BEARING	N 32° 27' W	N 58° 58' E		
DISTANCE	45.3'	61.0'		
BT TAG POSTED	YES	YES		

OVER



REGISTERED PROFESSIONAL LAND SURVEYOR

Danna L. Ingram

OREGON
 JULY 16, 1982
 DANNA L. INGRAM
 1985

12686030

RENUMERATING E-NE CEMENT BAKER

DLC #60 TRES ROW

Fd. 1 1/4" x 22" IRON PIPE 10" DEEP IN ERMUD

ROAD AND LEAVING OVER 14" x 14" x 6" SANDSTONE

14" BELOW ROAD SURFACE w/ NAIL IN TOP

CENTER. HELD NAIL IN STONE FOR EXACT

OR. POSITION. TOP OF PIPE BR. SIZE 0.47'

FROM NAIL IN STONE. REMOVED PIPE AND

STONE AND SET 2" x 3 1/2" G.I.P. w/ 3 1/4"

BRASS DISK CONC. IN TOP 8" BELOW

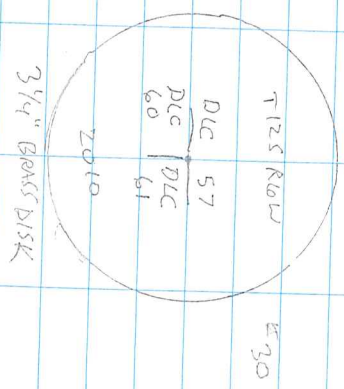
ROAD SURFACE AND MKD AS SHOWN.

BOTH OF REST. 3355 BT'S ARE STRANDING

AND IN GOOD CONDITION. BRAKE TIE STONE

IN PIECES AND PLACED AROUND NEW

MON. 12" ↓



CLDY, MILD
118°, 29, 5" Hg

M/Kaw N100 31C / SURVEY PLO

12-21-2010
D. DEAN
D. MALONE

29/15

