

DATE 04/21/2008TOWNSHIP 12 SOUTH, RANGE 06 WEST, WILLAMETTE MERIDIAN, SECTION 35 CORNER N/A
DONATION LAND CLAIM CLEMENT BARKER NO 60 CORNER SOUTHEAST**COMMON CORNER(S).**

POINT ON THE WEST LINE OF THE SANFORD WHITE DONATION LAND CLAIM NO 61

RECORDS (INFORMATION IN BOLD ITALICS IS COUNTY STAFFS' INTERPRETATION OF THE RECORD)

BASED ON EXTENSIVE RESEARCH AND RECOVERY OF EVIDENCE, THIS OFFICE HAS DETERMINED THAT MOST GENERAL LAND OFFICE SURVEYORS MEASURED TO THE FACE OF BEARING TREES

- [01] GENERAL LAND OFFICE (GLO) NOTES FOR THE CLEMENT BARKER DONATION LAND CLAIM (DLC) NO 60 BY D HATHORN, D S , DATED 1855 SET A POST. MARKED A 12" OAK N72°E 21 LKS (13.86 FT.), A 10" OAK S75°W 25 LKS. (16.50 FT.) AND A 15" OAK N16°W 82 LKS. (54.12 FT.).
- [02] COUNTY SURVEY NO 196 (OLD NO 100) FIELD NOTES (BOOK 8, PAGE 21) BY W C GALLOWAY, D C S , DATED DECEMBER 8, 1910 SET A 5"x8"x10" STONE. FOUND A 15" OAK (GLO BT) N16°W 0.82 CHS (54.12 FT.), STANDING. MARKED A 20" FIR S37°35'E 0 625 CHS (41.25 FT.).
- [03] CORNER RESTORATION BOOK NO 1, PAGE 16 BY W C GALLOWAY, D C S , DATED DECEMBER 10, 1910 SET A 5"x8"x10" STONE. FOUND A STUMP HOLE AND A 15" OAK (GLO BT) N16°W 0.82 CHS. (54.12 FT.), STANDING. MARKED A 20" FIR S37°35'E 0 625 CHS (41.25 FT.).
- [04] CORNER RESTORATION NO 1540 *TRANSCRIBED FROM RECORD [03] AND MAY CONTAIN ERRORS AND/OR OMISSIONS*
- [05] COUNTY SURVEY NO 398 (OLD NO 139) MAP BY F M WILKES, D C S , DATED OCTOBER 5, 1913 STONE
- [06] BENTON COUNTY MAP NO 12-6-00034 BY F M WILKES, D C S , DATED OCTOBER 5, 1913 STONE.
- [07] COUNTY SURVEY NO 838 (OLD NO 100) PROPERTY DESCRIPTION, NO SURVEYOR OR DATED GIVEN 5"x8"x10" STONE.
- [08] COUNTY SURVEY NO 4384 BY FRED LEMKE, P L S , DATED APRIL 22, 1967 FOUND A STONE
- [09] COUNTY SURVEY NO 5382 BY FRED LEMKE, P L S , DATED JULY 27, 1972 FOUND A STONE
- [10] BENTON COUNTY CORNER RESTORATION FIELD NOTES (BOOK 7, PAGE 32) BY CURTIS LIESENFELT, PARTY CHIEF, DATED APRIL 4, 1990 FOUND A 4"x7"x10" STONE LYING ON ITS SIDE THE NORTHERLY EDGE OF THE STONE AS FOUND HAS AN "X" AND A "S" SCRIBED ON IT SET A 2"x36" IRON PIPE WITH A 3/4" BENTON COUNTY BRASS CAP. FOUND A 30" PARTLY ROTTEN FIR STUMP (CSBT) S33°E 41.25 FT., WITH PART OF AN OLD FACE VISIBLE AND A 1" I.P., 9" ABOVE GROUND, N01°E 216.06 FT. MARKED A 13" FIR N78°E 24.94 FT TO FACE, SCRIBED "DLC60BT", AN 8" FIR S35°E 38.86 FT. TO FACE, SCRIBED "DLC60BT", A 14" FIR S48°W 55.21 FT. TO FACE, SCRIBED "DLC60BT" AND A 12" FIR N78°W 50.67 FT TO FACE, SCRIBED "DLC60BT"
- [11] CORNER RESTORATION NO 3753 BY CURTIS LIESENFELT, PARTY CHIEF, DATED APRIL 4, 1990 FOUND A 4"x7"x10" STONE LYING ON ITS SIDE. THE NORTHERLY EDGE OF THE STONE AS FOUND HAS AN "X" AND A "S" SCRIBED ON IT. SET A 2"x36" IRON PIPE WITH A 3/4" BENTON COUNTY BRASS CAP FOUND A 30" PARTLY ROTTEN FIR STUMP (CSBT) S33°E 41.25 FT , WITH PART OF AN OLD FACE VISIBLE AND A 1" I.P., 9" ABOVE GROUND, N01°E 216.06 FT MARKED A 13" FIR N78°E 24.94 FT. TO FACE, SCRIBED "DLC60BT", AN 8" FIR S35°E 38.86 FT. TO FACE, SCRIBED "DLC60BT", A 14" FIR S48°W 55.21 FT TO FACE, SCRIBED "DLC60BT" AND A 12" FIR N78°W 50.67 FT. TO FACE, SCRIBED "DLC60BT".

COMMENTS/LOCATION/ETC**NOTES**

THIS IS A MICROSOFT WORD 2003 DOCUMENT NAMED "26860040" CREATED FROM A BOILER PLATE DOCUMENT NAMED "HISTORY", WHICH HAS A STYLESHEET NAMED "CORNER" ATTACHED TO IT

FIRM/AGENCY BENTON COUNTY SURVEYOR'S OFFICE
ADDRESS: 360 S W AVERY AVE CORVALLIS OR 97333, PH 766-6821
RESEARCH BY: BERNARD S ALTENBACH, ENGINEER/SURVEY TECH

Survey #100
W.C.G.

SE cor. of Clement Barker D.L.C. # 60 Tp. 12-6
Set stone 5"x8"x10" orig. cor. stump hole.
Fir 20" in dia. bears S. 37° 35' E. .625'
Oak 15" " " " N. 16° W. .82' std.
Witnesses J.M. Henkle, H. Plogman + A. Majestrak Dec. 10, 1910.

N.W. of S.H. White D.L.C. #61. Tp. 12-6
Set sandstone 6"x16"x16"
Fir 30" in dia. bears N. 4° E. .41' std.
Witnesses Fred Seemet, A. Majestrak + H. Plogman Dec. 10, 1910.

S.W. cor. of C.P. Blair D.L.C. # 57 Tp. 12-6.
Set sandstone 6"x14"x14" orig. cor.
Fir 14" in dia. bears N. 34° 17' E. .280'
" 18" " " " S. 40° E. .87' std.
" 18" " " " N. 20° 37' W. .152'
Witnesses Fred Seemet, A. Majestrak + H. Plogman Dec. 10, 1910.

N.E. cor. of S. H. White D.L.C. #61 Tp. 12-6.
Mhd. stone 8"
Oak 18" N. 22° E. 3.57' std.
Witnesses G.F. Miller, Fred Seemet + A. Majestrak Dec. 14, 1910.

N.W. cor. of C.P. Blair D.L.C. # 57 Tp. 12-6.
Set boulder 8" in dia. two stumps std. orig. cor.
Oak 12" in dia. bears S. 30° E. .877'
" 11" " " " N. 87° 41' W. .296'
Witnesses Fred Seemet, A. Majestrak + H. Plogman Dec. 10, 1910.

#101
W.C.G. 1/4 sec. cor. between secs. 27 + 28 Tp. 12-6.
Set 3/8" steel rod.
Oak 18" in dia. bears S. 64° 53' E. 2.410'
" 15" " " " N. 32° 13' W. 4.932'
Witnesses Elmer Benton + Robert Sandiford Dec. 17, 1910.

Sec. cor. to secs. 27, 28, 33 + 34 Tp. 12-6.
Set L iron. orig. cor.
Fir 40" in dia. bears N. 71° E. .89' std.
" 36" " " " S. 31° E. .17' "
" 15" " " " S. 64° 40' W. .274'
" 36" " " " N. 10° W. .12' "
Witnesses Elmer Benton + Robert Sandiford Dec. 16, 1910.

1/4 sec. cor. bet. secs. 27 + 34 Tp. 12-6.
Set 1/2 pipe orig. cor.
Fir 20" in dia. bears S. 21° 21' W. .968'
" 36" " " " N. 37° W. .27' std.
Witnesses Elmer Benton + Robert Sandiford Dec. 17, 1910.

Survey
W.C.

W.C.

W.

S. E. Corner of Clement Barker DLC 60, Twp. 12-6

1540

Reestablishment by W. C. Gallaway

December 10, 1910

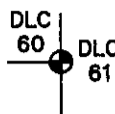
Set stone 5" x 8" x 10" original corner stump hole
Fir 20" in diam bears S. 37° 35' E .625 chains
Oak 15" in diam bears N. 16° W .82 chains (standing)

Witnesses J. M. Henkle, H. Flagman, and A. Majestrik

SECTION 35 TOWNSHIP 12 S RANGE 6 W DLC CLEMENT BARKER NO. 60 CORNER SE
DATE 4/4/90 CORNER RESTORATION FIELD BOOK NUMBER 7 PAGE 32

CORNER DESIGNATION:

THE SOUTHEAST CORNER OF THE CLEMENT BARKER
DLC NO. 60 IN T 12 S, R 6 W.



- _____ CONDITION REPORT ONLY
- _____ REFERENCED OUT
- XX RENEWED
- _____ SURVEYED IN

LOCATION AND COMMENTS:

THE CORNER IS LOCATED IN A NORTH-SOUTH WIRE FENCE, AND APPROXIMATELY 500 FEET NORTHERLY OF THE HOUSE AT 24505 PENLAND DR. (PRIVATE ROAD NO. 3235).

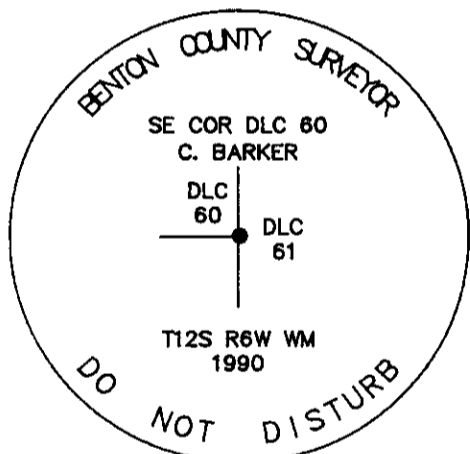
PREVIOUS RENEWALS/SURVEYS, ETC.:

- ORIGINAL GLO SURVEY BY D. HATHORN IN 1854.
- CORNER RESTORATION NO. 1540 BY W.C. GALLOWAY IN 1910.
- COUNTY SURVEY NO. 838 BY C.J. FLAGMAN IN 1922.
- COUNTY SURVEY NO. 4384 BY F. LEMKE IN 1967.

MONUMENTS AND ACCESSORIES FOUND (CONDITION AND SOURCE):

- FOUND: 4" X 7" X 10" STONE FOR THE CORNER LOCATED ON ITS SIDE. THE NORTHEASTERLY SIDE OF THE STONE AS FOUND HAS AN "X" AND "S" SCRIBED ON IT. (COR. REST. NO. 1540). RESET THE STONE TO AGREE WITH THE RECORD DISTANCES USING THE TWO BEARING OBJECTS RECOVERED AND DESCRIBED BELOW.
- FOUND: A PARTLY ROTTED FIR STUMP 30" IN DIAMETER, BEARS S 33° E 41.25 FEET (S 37° 55' E 41.25 FEET COR. REST. NO. 1540). SET A B.T. TAG ON THE THE NORTHWESTERLY FACE. PART OF THE OLD FACE IS VISIBLE.
- FOUND: 1" INSIDE DIAMETER IRON PIPE FIRMLY SET 9" ABOVE GROUND, BEARS N 1° E 216.06 FEET (N 0° 23' W 216.06 FEET COUNTY SURVEY NO. 4384). PIPE IS 0.5 FOOT SOUTHERLY FROM A WIRE FENCE CORNER. THE FENCE RUNS NORTH, SOUTH AND EAST.
- NO OTHER RECORD BEARING OBJECTS WERE RECOVERED.

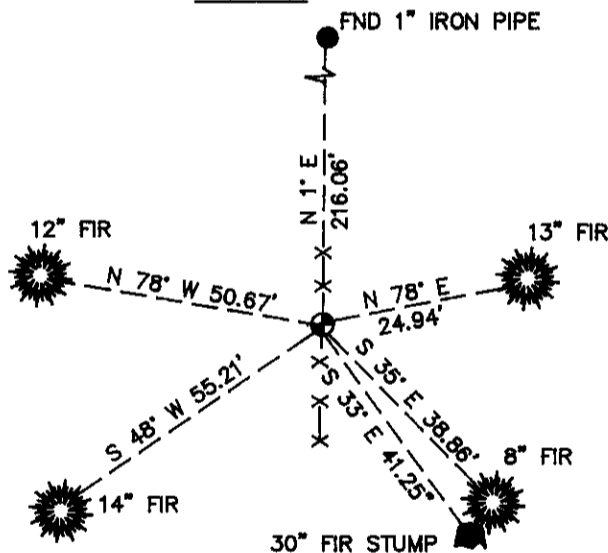
MONUMENT DETAIL



3 1/4" BRASS CAP



SKETCH



MONUMENT SET (PROCEDURES AND DESCRIPTION):

SET: 2" INSIDE DIAMETER X 36" LONG IRON PIPE WITH A 3 1/4" BENTON COUNTY BRASS CAP STAMPED AS SHOWN IN THE SAME POSITION AS THE RESET STONE. BURIED THE STONE ON ITS SIDE ALONG THE EAST SIDE OF THE NEW MONUMENT.

NEW ACCESSORIES:

- A FIR 8" IN DIAMETER BEARS S 35° E 38.86 FEET. FACED AND SCRIBED "DLC 60 BT". SET A PK NAIL AND B.C.B.W. IN THE SOUTHWESTERLY BASE. SET A B.T. TAG ON THE NORTHWESTERLY FACE.
- A FIR 12" IN DIAMETER BEARS N 78° W 50.67 FEET. FACED AND SCRIBED "DLC 60 BT". SET A PK NAIL AND B.C.B.W. IN THE SOUTHERLY BASE. SET A B. T. TAG ON THE EASTERLY FACE.
- A FIR 14" IN DIAMETER BEARS S 48° W 55.21 FEET. FACED AND SCRIBED "DLC 60 BT". SET A PK NAIL AND B.C.B.W. IN THE SOUTHEASTERLY BASE. SET A B.T. TAG ON THE NORTHEASTERLY FACE.
- A FIR 13" IN DIAMETER BEARS N 78° E 24.94 FEET. FACED AND SCRIBED "DLC 60 BT". SET A PK NAIL AND B.C.B.W. IN THE NORTHERLY BASE. SET A B.T. TAG ON THE WESTERLY FACE.
- SET: ORANGE FIBERGLASS "SURVEY MARKER" POST 1 FOOT WESTERLY.

NOTES:

B.C.B.W. IS A BRASS WASHER STAMPED "BENTON COUNTY SURVEYOR". COMPASS DECLINATION IS 20° EAST. ALL MEASURED DISTANCES AND COMPASS BEARINGS ARE TO THE CENTER OF THE OBJECT, UNLESS OTHERWISE NOTED.

FIRM/AGENCY: BENTON COUNTY PUBLIC WORKS
ADDRESS: 360 S.W. AVERY AVE. CORVALLIS OR. 97333; PH. 757-6821
PARTY CHIEF: CURTIS J. LIESENFELT
CREW:
WITNESS:

REGISTERED
PROFESSIONAL
LAND SURVEYOR

Danna L. Fehrenbacher

OREGON
JULY 16, 1982
DANNA L. FEHRENBACHER
1995

7125 R/W SEC. 35 SE COR CLEMENT BARKER D.C. NO. 60

FOR THE COR
 END: A 4" x 7" x 10" STONE LAYING ON ITS SIDE. THE N E 1/4
 EDGE OF THE STONE AS FOUND HAS AN "X" & "S" SCRI
 THE B.O.S. REVERSED
 IRED ON IT. (COR. REST. NO. 1540) RESET TO AGREE @ DIST. 70'

A PARTLY ROTTED FIR STUMP 30' IN DIA. BEARS
 S 33° E ~ 41.25' (S 37° 55' E ~ 41.25' COR. REST. NO. 1540)

SET A BT TAG ON NW 1/4 FACE PART OF AN OLD FACE
 IS VISIBLE

" 1" 10.I.P. FIR ONLY SET 9" A.G. BEARS N 1° E ~ 216.06'
 (NO. 25 W ~ 216.06' CS 4384). PIPE IS 0.5' S 1/4 OF HOUSE
 COR. LAY. N, S, & E

NO OTHER RECORD BEARING OBJECTS WERE RECOVERED

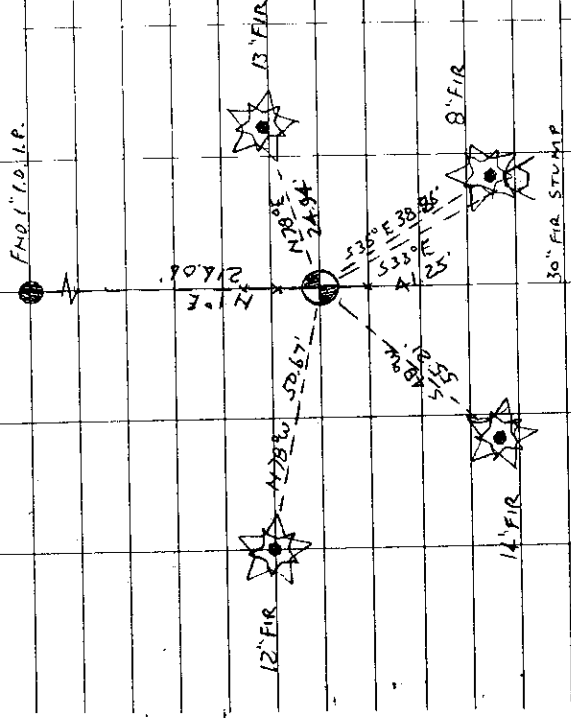
SET: 2" 1.0 x 3.6" LONG IRON PIPE @ 3 1/4" BEN. CO. B.C. STAMP.)
 ED AS SHOWN IN THE SAME POSITION AS THE REST
 ON SIDE
 STONE BURIED THE STONE LIES ALONG
 THE E SIDE OF THE NEW MON

A FIR 8" IN DIA. BEARS S 35° E ~ 38.86' FACED & SCRIBED
 "DLC 60 BT" SET PK + BCBW IN SW 1/4 BASE SET BT
 TAG ON NW 1/4 FACE

A FIR 12" IN DIA. BEARS N 78° W ~ 50.67' FACED & SCRIBED
 "DLC 60 BT" SET PK + BCBW IN S 1/4 BASE SET BT
 TAG ON E 1/4 FACE

1.00W
 1.27S
 55.30

A 1/4 100, COLD, RWT; SILVA COMP. 20° E. DEC.



FIND 10.I.P.

216.06'

50.67'

N 78° E

12' FIR

14' FIR

13' FIR

8' FIR

30' FIR STUMP

A FIR 14" IN DIA. BEARS S 48° W ~ 55.21' FACED & SCRIBED "DLC
 60 BT" SET PK + BCBW IN SW 1/4 BASE SET BT TAG ON
 NE 1/4 FACE

A FIR 13" IN DIA. BEARS N 78° E ~ 24.94' FACED & SCRIBED "DLC
 60 BT" SET PK + BCBW IN N 1/4 BASE. SET BT TAG ON
 W 1/4 FACE

SET ORANGE ABERGLASS "SURVEY MARKER" POST 1' W 1/2 SE COR DLC 60
 C. BARKER

THE COR. IS LOCATED IN A N, S WIRE CAP DLC
 60

FENCE + 500' ± N 1/4 OF THE STAMPINGS
 61

HOUSE @ 24505 PENLAND DR (PRIVATE
 RO. NO. 3235) IT IS POOR FOR PRE-
 MARKING + GPS CONTROL
 7125 R/W WM
 1990