

CORNER FILE TRACKING

H:\Survey\Corners\Misc\Filetrac2.doc
06/15/2003

CORNER NUMBER
126861020

STEP	HISTORY	RESTORATION
Form Prepared, DB	12/05/08	12/31/08
Field Inspection, DB	12/30/08	12/30/08
Form Checked, DB	1/2/09	1/2/09
Form Edited, DB	1/2/09	1/2/09
Form Signed, DB	1/2/09	1/2/09
Counter Index	12/31/08	12/31/08
GIS Index	12/31/08	12/31/08
Authorize Payment, DB		
Archive Digital Files	1/5/09	1/5/09
Collect Documents	12/31/08	12/31/08
Scanned	1/5/09	1/5/09
Copy For Filming	1/5/09	1/5/09
Filed, DB		
Finish index (count unit)	12/30/08	12/30/08
Filmed (Archived), DB		
PDH File	1/5/09	1/5/09

(DB) = Entry needed in database (Access).

COMMENTS:

DATE 12/05/2008

TOWNSHIP 12 SOUTH, RANGE 06 WEST, WILLAMETTE MERIDIAN; SECTION 35 CORNER N/A
DONATION LAND CLAIM SANFORD H. WHITE NO. 61 CORNER SOUTHEAST

COMMON CORNER(S):

SOUTHWEST CORNER OF THE ISAAC FOSTER DONATION LAND CLAIM (DLC) NO. 62

RECORDS (INFORMATION IN BOLD/ITALICS IS COUNTY STAFFS' INTERPRETATION OF THE RECORD)

BASED ON EXTENSIVE RESEARCH AND RECOVERY OF EVIDENCE, THIS OFFICE HAS DETERMINED THAT MOST GENERAL LAND OFFICE SURVEYORS MEASURED TO THE FACE OF BEARING TREES.

- [01] GENERAL LAND OFFICE (GLO) NOTES FOR THE ISAAC FOSTER DONATION LAND CLAIM (DLC) NO. 62 BY D. HATHORN, D.S., DATED FEBRUARY 21, 1855. **SET A POST. MARKED A 12" ALDER S40 °W, 154 LKS. (101.64 FT.) AND A 24" OAK N73 °W 613 LKS. (404.58 FT.).**
- [02] GENERAL LAND OFFICE (GLO) NOTES FOR THE SANFORD H. WHITE DONATION LAND CLAIM (DLC) NO. 61 BY D. HATHORN, D.S., DATED 1855. **CORNER TIED, BUT NOT DESCRIBED.**
- [03] COUNTY SURVEY NO. 398 (OLD NO. 139) FIELD NOTES (BOOK 11, PAGE 33) BY F. M. WILKES, D.C.S. DATED OCTOBER 2, 1913. **TO STONE SET FOR SE OF WHITE DLC ON S SIDE OF 18" ANCHOR POST.**
- [04] COUNTY SURVEY NO. 398 (OLD NO. 139) MAP BY F. M. WILKES, C.S., DATED OCTOBER 5, 1913. **STONE.**
- [05] COUNTY SURVEY NO. 489 (OLD NO. 197) FIELD NOTES (BOOK 18, PAGE 32) BY W. C. GALLOWAY, C.S., DATED JANUARY 11, 1915. **CORNER TIED, BUT NOT DESCRIBED.**
- [06] COUNTY SURVEY NO. 489 (OLD NO. 197) MAP BY W. C. GALLOWAY, C.S., NO DATE GIVEN. **STONE.**
- [07] CORNER RESTORATION BOOK NO. 1, PAGE 152 BY W. C. GALLOWAY, C.S., NO DATE GIVEN. **FOUND A STONE ALREADY SET FOR THE CORNER. FOUND A 3/4" PIPE ON LINE WEST 10.379 CHS. (685.01 FT.).**
- [08] CORNER RESTORATION NO. 1541. **TRANSCRIBED FROM RECORD [07] AND MAY CONTAIN ERRORS AND/OR OMISSIONS.**
- [09] BENTON COUNTY MAP NO. 12-6-00031 BY W. C. GALLOWAY, C.S., DATED JANUARY 20, 1915. **STONE.**
- [10] COUNTY SURVEY NO. 5361 BY RICHARD FAIL, P.L.S., DATED NOVEMBER 1, 1972. **FOUND A STONE.**
- [11] COUNTY SURVEY NO. 6181 BY KENNETH WIGHTMAN, P.L.S., DATED SEPTEMBER 9, 1976. **FOUND A STONE.**

NOTES:

THIS IS A MICROSOFT WORD 2003 DOCUMENT NAMED "26861020" CREATED FROM A BOILER PLATE DOCUMENT NAMED "HISTORY", WHICH HAS A STYLESHEET NAMED "CORNER" ATTACHED TO IT.

FIRM/AGENCY: BENTON COUNTY SURVEYOR'S OFFICE

ADDRESS: 360 S.W. AVERY AVE. CORVALLIS OR 97333; PH. 766-6821

RESEARCH BY: BERNARD S. ALTENBACH, ENGINEER/SURVEY TECH.

DATA ENTRY BY: SAME

3 1/4" BRASS DISK
N.E. S. WHITE DLC 61

3 1/4" ALUMINUM DISK
N.W. I. FOSTER DLC 62

D. FIR PLANTATION

23" D. FIR FACE
SCRIBED "DLC61BT"

BRUSH AND HARDWOODS

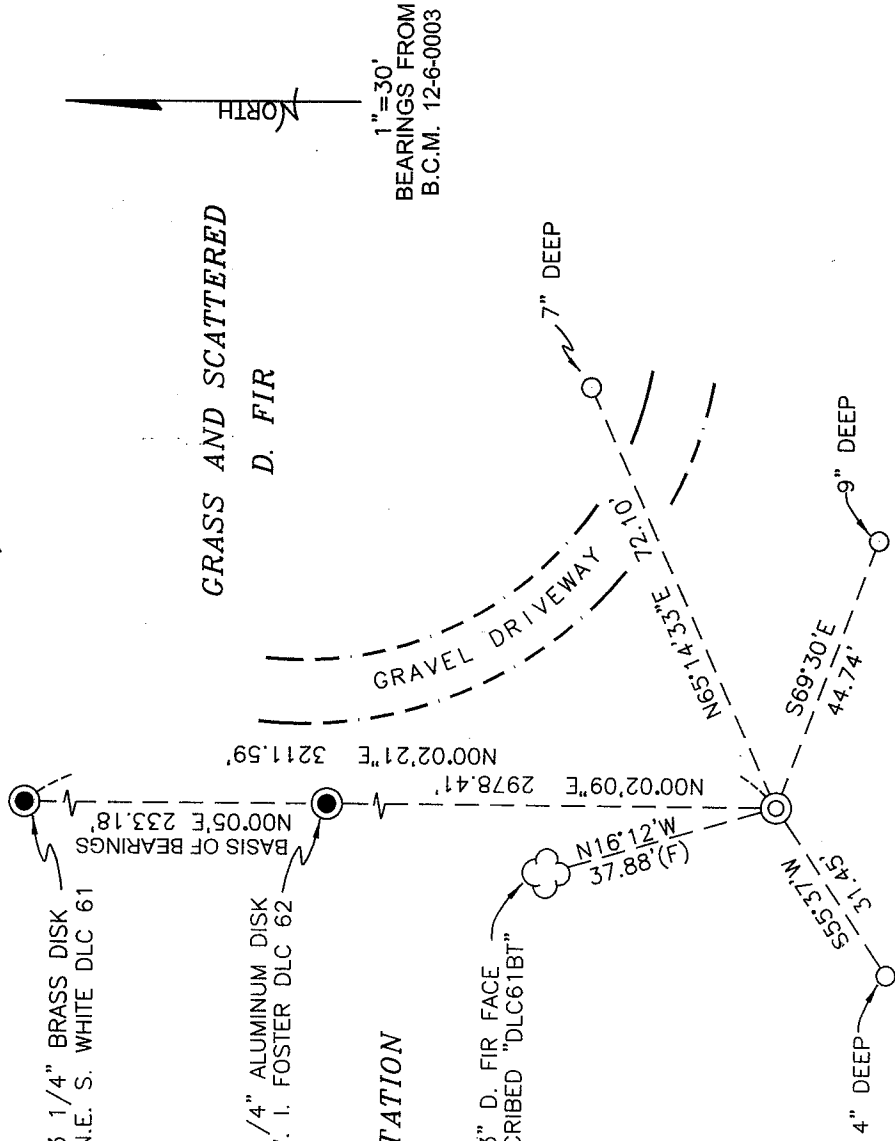
GRASS AND BRUSH

GRASS AND SCATTERED

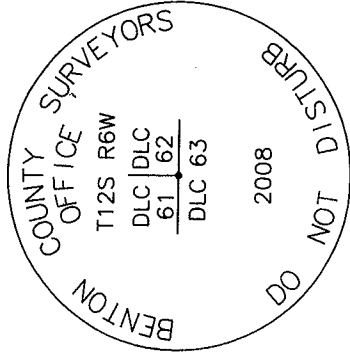
D. FIR

GRAVEL DRIVEWAY

1" = 30'
BEARINGS FROM
B.C.M. 12-6-0003



MONUMENT DETAIL



3 1/4" ALUMINUM DISK

LEGEND

- SET 5/8" X 30" REBAR WITH YELLOW PLASTIC CAP MKD "BENTON COUNTY SURVEYOR"
- FOUND MONUMENT AS NOTED.
- (F) MEASUREMENT TO FACE
- ◎ GOVERNMENT MONUMENT SET AS SHOWN
- ⊙ GOVERNMENT MONUMENT FOUND AS SHOWN
- ☁ BEARING TREE AS NOTED
- B.C.M. BENTON COUNTY MAP

NEW ACCESSORIES:

1. SET REBAR (SEE LEGEND) 7" BELOW GROUND LEVEL N65°14'33"E, 72.10 FEET.
2. SET REBAR (SEE LEGEND) 9" BELOW GROUND LEVEL S69°30'E, 44.74 FEET.
3. SET REBAR (SEE LEGEND) 4" BELOW GROUND LEVEL S55°37'W, 31.45 FEET.
4. 23" D. FIR FACE SCRIBED "DLC61BT" N16°12'W, 37.88 FEET TO FACE. SET ALUMINUM NAIL AND PLASTIC WASHER BELOW SCRIBING FOR DISTANCE AND ANGLE MEASUREMENT.

NOTES:

COMPASS DECLINATION IS 20' EAST. ALL MEASURED DISTANCES AND BEARINGS ARE TO THE CENTER OF THE OBJECT, UNLESS OTHERWISE NOTED. ALL BEARING TREES ARE PAINTED AND HAVE A B.T. TAG ATTACHED, FACING THE CORNER UNLESS OTHERWISE NOTED. ALL NEW BEARING TREES HAVE A PLASTIC WASHER (STAMPED "SURVEYOR MARKER DO NOT REMOVE") ATTACHED BY AN ALUMINUM NAIL TO THE FACE, BELOW THE "BT" FOR DISTANCE AND ANGLE MEASUREMENT UNLESS OTHERWISE NOTED. THE DRAWING IS FROM AUTOCAD RELEASE 2008.

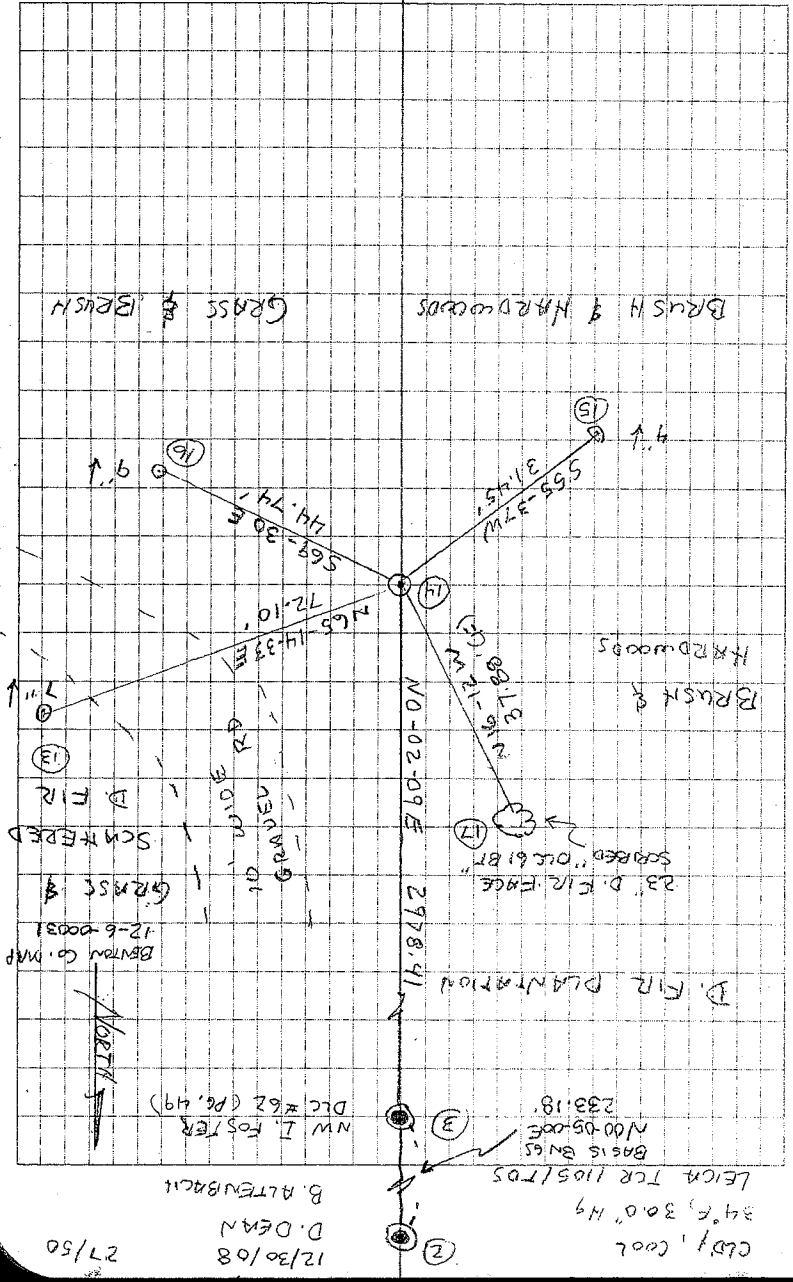
THIS RESTORATION WAS PERFORMED AT THE DIRECTION AND APPROVAL OF THE BENTON COUNTY SURVEYOR David M. Dean

REGISTERED
PROFESSIONAL
LAND SURVEYOR

1/2/09 *David M. Dean*
OREGON
JULY 13, 1984
DAVID M. DEAN
2090

FIRM/AGENCY: BENTON COUNTY SURVEYOR'S OFFICE
ADDRESS: 360 S.W. AVERY AVE. CORVALLIS, OR. 97333; PH. 766-6821
PRESENT: DAVID M. DEAN, P.L.S. AND BERNIE ALTENBACH, SURVEY TECH.
EQUIPMENT: LEICA TCR 1105 WITH TDS ON BOARD

RENEWAL DATE: 12/31/09



126861020
 REMONUMENTING SE SANDRO WHITE #61 12-6
 Col 9" x 9" x 7" STONE w/ "X" ON TOP
 CENTER OVER A 9" x 7" x 6" STONE
 w/ NO MKS. FOR COR. POSITION.
 OLD ACCESSORIES ARE MISSING.
 DIST & BNG TO NW D.C. 62 OK WITH
 W.C.G. REMOVED STONES AND SET
 2" x 3 1/2" G.I.P. w/ 3/4" ALI DISK CONC.
 IN TOP 3" & MKD AS SHOWN.
 BURIED STONES ON S AND E SIDE
 New mon. 5" x SET 6' ORANGE
 CARSONITE "SURVEY marker" post

- C.S. 182
 S.E. corner of Sanford White Cl. 61 T. 12-6
 A Stone already set for corner from which
 a 3/4" pipe on line bears West 16.375
- C.S. 223
 S.E. corner of F.M. Iman Cl. 56 T. 12-6.
 Set a 1 1/4" shaft on line and proportional distance from SW of Cl.
 From which an Oak 2" in dia. bears N. 73° W. 8.73 chs.
 A Yew tree 11' 2.67° S.W. 3.22 " corner
 " The most N.W. corner of Robert F. Blair Cl. 57 T. 12-6
 Set a narrow both for corner
 Set a 3/8" iron rod South 20 feet
 A 3/4" fir bears N 66° E. 1.237 chs.
 An Oak 8" dia. " N. 44° 50' W. 1.895 "
- C.S. 27
 S.W. corner of E. Hartless Cl. 51 T. 12-6
 A Stone set in place for corner. 15' x 13' x 36" orig stone
 A 1 1/4" shaft on line N. 89° 54' E. 5.713 chs.
- C.S. 182
 Corner set by a
 former surveyor
 Trees by Gout sung
 The most E. N.E. cor. of James H. Stewart Cl. 49 - T. 11-4
 Stone set. Highest point
 Oak Stump 30" in dia. bears N. 70 1/4° E. 9.15 chs.
 " 20. " " S. 11 3/4° W. 7.36 "
- C.S. 267
 N.E. cor. of James M. Chisham Cl. 54 T. 12-6
 Set 2" shaft oak stump N.W., east side about
 Oak 15" in dia. bears S. 61° E. 2.19 chs. 274.
 " 18. " " N. 84 3/4° W. 1.717 "
- C.S. 182
 S.E. cor. of James H. Stewart Cl. 49 T. 11-4
 Set 1 1/4" iron rod 4' long
 Fir 15" in dia bears N 67 1/2° E. .16 chs.
 " 36. " " N. 50° W. .36 " S.A.
 Ash 6. " " S. 55° W. .38 "
- C.S. 182
 S.W. of Jehiel S. Kendall Cl. 48 T. 11-4.
 Set 1 1/4" pipe in hollow maple, said maple was corner to Cl.
 J.W. Hyde and Other trees were std. at time but are gone now.
 D.H. Lewis witness
 " N.W. corner of Jeniel S. Kendall Cl. 48, T. 11-4
 Set pipe 1.4 links South of stone for corner
- C.S. 58
 N.W. corner of James H. Stewart Cl. 19 T. 11-4.
 W.C. Galloway cs. Set 1" pipe for cor. Set from other corners
 Burr Road and A Stone S. 60° 48' E. 8.037 chs.
 Emor Mosfield
 C.S. 58
 N.E. corner of Archimedes Stewart Cl. 51 T. 11-4
 Stone in place for corner
 A 1" pipe is N 0° 48' W 8.037 and 1 1/4" pipe at east of R.R. R.W. S. 89° 44' W. 8.816

8
S. E. corner of Sanford White Cl 61, Twp. 12-6

1541

Reestablishment by W. C. Galloway-

Date 01-20-1915

A stone already set for corner

$\frac{3}{4}$ " pipe on line bears West 10.379 chains