

## CORNER FILE TRACKING

H:\Survey\Corners\Misc\Filetrac2.doc

06/15/2003

<b>CORNER NUMBER</b>
<b>126861040</b>

<b>STEP</b>	<b>HISTORY()</b>	<b>RESTORATION()</b>
Form Prepared, DB	4/21/08	4/29/08
Field Inspection, DB	4/25/08	4/25/08
Form Checked, DB	5/2/08	5/2/08
Form Edited, DB	5/2/08	5/2/08
Form Signed, DB	5/2/08	5/2/08
Counter Index	4/25/08	4/25/08
GIS Index	4/25/08	4/25/08
Authorize Payment, DB	—	—
Archive Digital Files		
Collect Documents		
Scanned	5/12/08	5/12/08
Copy For Filming		
Filed, DB		
Finish index (count unit)	4/25/08	4/25/08
Filmed (Archived), DB		
Document No's to Andrew		

(DB) = Entry needed in database (Access).

### COMMENTS:

**126861040**

(5)

N. E. corner Thomas H. Linville Cl 6<sup>5-</sup>A, Twp. 12-6

1548

Reestablishment by W. C. Galloway

October 24, 1914

Set post

Oak 12" in diam bears S 69° W

.59 Chains (stump)

Oak 12" in diam bears S 52° E

.27 chains (stump)

Re-established by Verle C. Moore

January, 1963 (C.S. 3729)

Set 1 3/4" truck axle in 3" hole 36" deep 0.7 feet below surface

Found cluster of young oak S. 52° E. 17.8 feet

1549

Set spike in southerly side of Fir 7" in diam. N. 70° 01' W. 25.80 feet

Set spike in westerly side of Fir 21" in diam. S. 9° 36' E. 13.84 feet

(7)

BENTON COUNTY SURVEYORS OFFICE - CORNER RESTORATION

3320

T 12 S, R 6 W, W B & M, BENTON COUNTY, OREGON

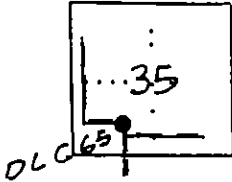
REPORTED BY JOHN RINALDI JR.

SECTION \_\_\_\_\_

N.E. COR. THOMAS H. LINVELLE D.L.C. 65

TITLE BENTON COUNTY SURVEY CREW CHIEF

DATE FEBRUARY 13, 1985



● OFFICIAL CORNER FOUND  
○ CORNER SET

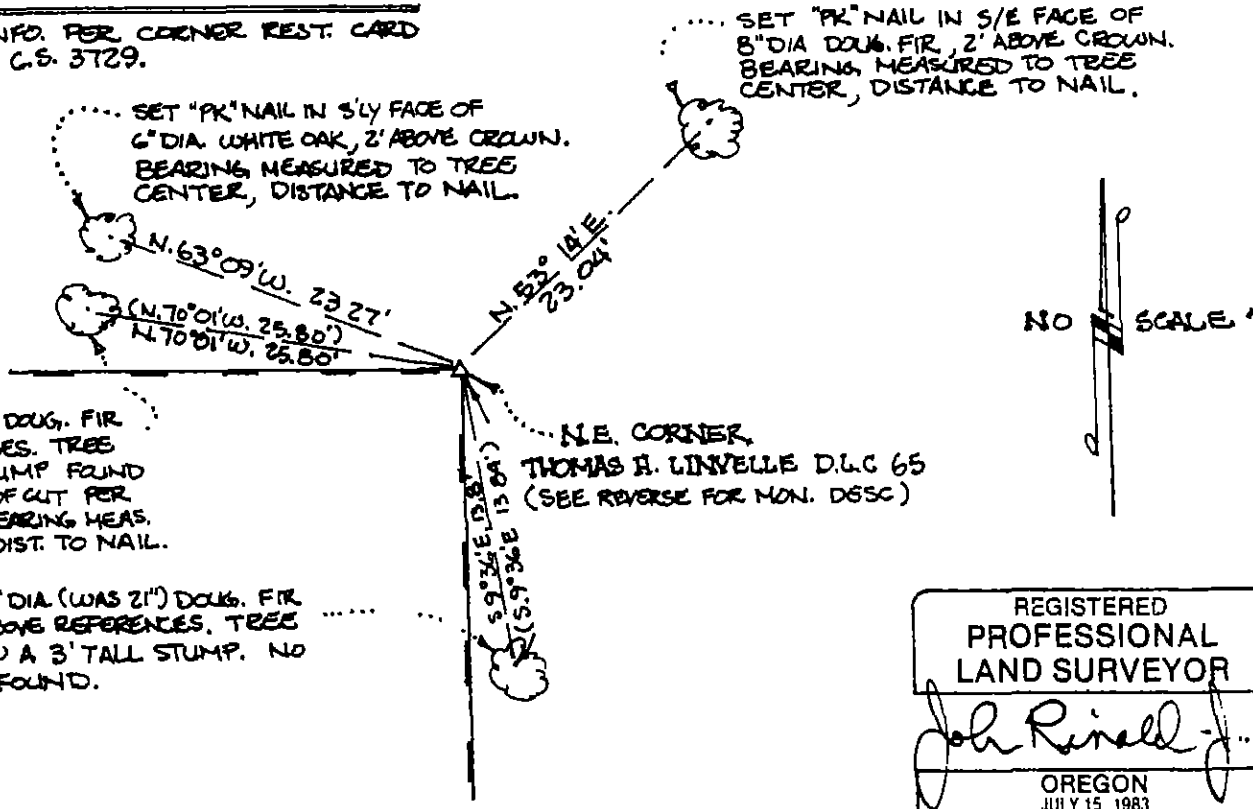
CORNER COMMON TO SEC \_\_\_\_\_  
IS \_\_\_\_\_  
DESCRIBE \_\_\_\_\_

ADDITIONAL INFORMATION  
FOUND 1 3/4" TRUCK AXLE 0.7' BELOW SURFACE PER CORNER RESTORATION CARD N° 1549 AND C.S. 3729. MONUMENT IS IN GOOD CONDITION AND WAS LEFT IN PLACE.

	LEGIBLE MARKS ON BEARING OBJECTS			
	FOUND	FOUND	SET	SET
	HEALED PLAZE	HEALED PLAZE	HEALED PLAZE	NONE
KIND	DOUG. FIR STUMP	DOUG. FIR STUMP	WHITE OAK	DOUG. FIR
SIZE	18" DIA.	30" DIA.	6" DIA.	8" DIA.
BEARING	N.70°01'W.	S.9°36'E.	N.63°09'W.	N.53°14'E.
DISTANCE	25.80'	13.8'	23.27'	23.04'
BT TAG POSTED	YES	YES	YES	YES

OVER

RECORD INFO. PER CORNER REST. CARD N° 1549 & C.S. 3729.



FD 18" DIA (WAS 7") DOUG. FIR PER ABOVE REFERENCES. TREE IS NOW A 2' TALL STUMP FOUND ALSO, SPIKE AT TOP OF CUT PER SAID REFERENCES. BEARING MEAS. TO TREE CENTER, DIST. TO NAIL.

FD 30" DIA (WAS 21") DOUG. FIR PER ABOVE REFERENCES. TREE IS NOW A 3' TALL STUMP. NO SPIKE FOUND.

N.E. CORNER THOMAS H. LINVELLE D.L.C 65 (SEE REVERSE FOR MON. D.S.S.C)

REGISTERED PROFESSIONAL LAND SURVEYOR  
 John Rinaldi Jr.  
 OREGON JULY 15 1983  
 JOHN RINALDI, JR  
 2056

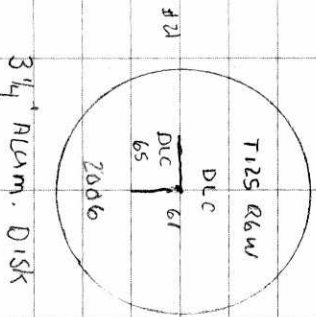
126861040

RENUMERATING SW INTERIOR SANFORD WHITE  
DLC 61 T125, R6W

FD 1 3/4" AXLE 1/6" BELOW GROUND LEVEL,  
PLUMB AND FIRMLY SET FOR CORNER POSITION.  
AXLE SET PER CS. 3729 FROM REMAINS OF  
SE GLO BT & REMAINS OF POST.  
FD CS. 3729 BT'S - NOW BOTH CORNER D.F.I.R  
STAMPS - NO VISIBLE MKS, FD REST. B320  
BT'S - NOW BOTH STANDING. SET 2" X 3 1/2"  
G.I.R. w/ 3/4" ALUM. DISK CONC. IN TOP  
OVER AXLE. ALUM DISK 12" BELOW GROUND  
LEVEL AND MKD AS SHOWN. TIED EXISTING  
REFS AND SET 1 NEW BT AND 2 IRON  
RODS. SET 6' ORANGE GRESSONITE "SURVEY  
MARKER" POST 0 1/2 NORTH OF NEW MARK.

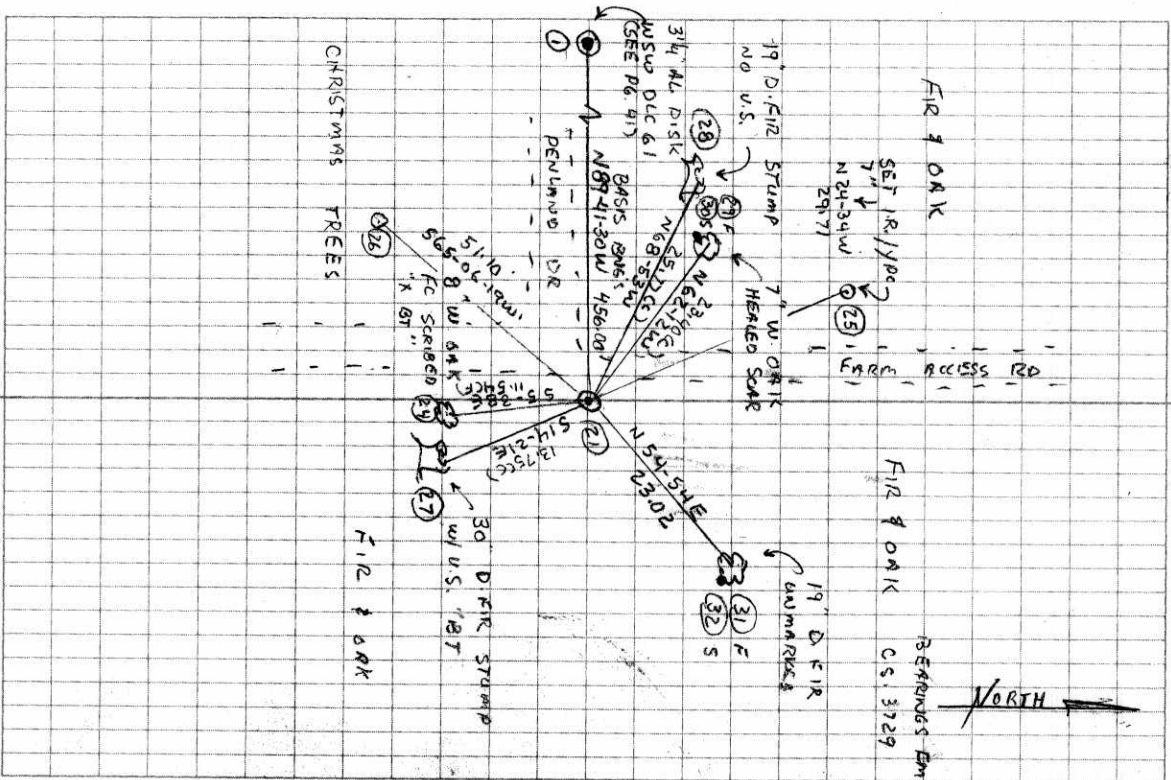
APR 21 05 20

(SEE PG. 41)



CD 1 MILD  
50° E, 27.8" Hg  
LEICA TOR 1105/TDS

4/25/08 26/42  
D. DEAN  
B. ALTENBACH



DATE 04/21/2008TOWNSHIP 12 SOUTH, RANGE 06 WEST, WILLAMETTE MERIDIAN; SECTION 35 CORNER N/A  
DONATION LAND CLAIM SANFORD H. WHITE NO.61 CORNER INTERIOR ELL**COMMON CORNER(S).**

NORTHEAST CORNER OF THE THOMAS H LINVILLE DONATION LAND CLAIM (DLC) NO 65

**RECORDS (INFORMATION IN BOLD /ITALICS IS COUNTY STAFFS' INTERPRETATION OF THE RECORD)**

BASED ON EXTENSIVE RESEARCH AND RECOVERY OF EVIDENCE, THIS OFFICE HAS DETERMINED THAT MOST GENERAL LAND OFFICE SURVEYORS MEASURED TO THE FACE OF BEARING TREES

- [01] GENERAL LAND OFFICE (GLO) NOTES OF THE THOMAS H LINVILLE DONATION LAND CLAIM (DLC) NO 65 BY D HATHORN, D S , DATED 1855 SET A POST. MARKED A 12" OAK S52°E 27 LKS. (17.82 FT.) AND A 12" OAK S69°W 59 LKS. (38.94 FT.).
- [02] GENERAL LAND OFFICE (GLO) NOTES OF THE SANFORD H WHITE DONATION LAND CLAIM (DLC) NO 61 BY D HATHORN, D S , DATED 1855 **CORNER TIED, BUT NOT DESCRIBED.**
- [03] COUNTY SURVEY NO 398 (OLD NO 139) FIELD NOTES (BOOK 11, PAGE 34), BY W C GALLOWAY, C S , DATED OCTOBER 2, 1913 **CORNER TIED, BUT NOT DESCRIBED.**
- [04] CORNER RESTORATION BOOK NO 1, PAGE 85 BY W C GALLOWAY, C S , DATED OCTOBER 24, 1914 SET(?) FOUND A 12" OAK STUMP (GLO BT) S52°E 0.27 CHS. (17.82 FT.) AND A 12" OAK STUMP S69°W 0.59 CHS. (38.94 FT.).
- [05] CORNER RESTORATION NO 1548 **TRANSCRIBED FROM RECORD [04] AND MAY CONTAIN ERRORS AND/OR OMISSIONS**
- [06] COUNTY SURVEY NO 3729 BY VERLE MOORE, P L S , DATED JANUARY 1963 FOUND A 3" HOLE WITH TRACES OF ROTTEN WOOD 36" DEEP. SET A 1 3/4" TRUCK AXLE, 0.70' BELOW SURFACE. FOUND A CLUSTER OF YOUNG OAKS (GLO BT) 4" TO 8" (6 IN NUMBER) S52°E 17.80 FT. MARKED A 21" FIR S09°36'E 13.84 FT., SET SPIKE IN WESTERLY SIDE AND A 7" FIR N70°01'W 25.80 FT , SET SPIKE IN SOUTHERLY SIDE
- [07] CORNER RESTORATION NO 1549 **TRANSCRIBED FROM RECORD [06] AND MAY CONTAIN ERRORS AND/OR OMISSIONS.**
- [08] COUNTY SURVEY NO 4338 BY OSBURN SHAW, P L S , DATED DECEMBER 2, 1966 FOUND A 1 3/4" AXLE.
- [09] COUNTY SURVEY NO 5382 BY VERLE MOORE, P L S , DATED JULY 27, 1972 FOUND A 1 3/4" AXLE.
- [10] CORNER RESTORATION NO 3320 BY JOHN RINALDI JR , P L S , DATED FEBRUARY 13, 1985 FOUND A 1 3/4" TRUCK AXLE, 0.70' BELOW THE SURFACE. MONUMENT IS IN GOOD CONDITION AND WAS LEFT IN PLACE. FOUND A 30" D. FIR STUMP S09°36'E 13.80 FT., WITH A HEALED BLAZE AND AN 18" D. FIR STUMP N70°01'W 25.80 FT., WITH A HEALED BLAZE. MARKED A 8" D. FIR N53°14'E 23.04 FT. AND A 6" W. OAK N63°09'W 23.27 FT., WITH A HEALED BLAZE.
- [11] COUNTY SURVEY NO 8214 BY TED LANGTON, P L S , DATED DECEMBER 15, 1988 FOUND 1 3/4" AXLE AND BT'S PER BENTON COUNTY CORNER RESTORATION FORM NO. 3320.

**NOTES.**

THIS IS A MICROSOFT WORD 2003 DOCUMENT NAMED "26861040" CREATED FROM A BOILER PLATE DOCUMENT NAMED "HISTORY", WHICH HAS A STYLESHEET NAMED "CORNER" ATTACHED TO IT

**FIRM/AGENCY.** BENTON COUNTY SURVEYOR'S OFFICE  
**ADDRESS:** 360 S W AVERY AVE CORVALLIS OR 97333, PH 766-6821  
**RESEARCH BY:** BERNARD S ALTENBACH, ENGINEER/SURVEY TECH  
**DATA ENTRY BY:** SAME

**BENTON COUNTY CORNER RESTORATION FORM, PAGE 1 OF 2, 126861040R3****SEE CORNER HISTORY FORM FOR RECORDS ETC.**

CORNER RESTORATION FIELD BOOK NUMBER 26 PAGE(S) 42 DATE 04/25/2008  
 TOWNSHIP 12 SOUTH, RANGE 6 WEST, WILLAMETTE MERIDIAN; SECTION 35 CORNER NONE  
 DONATION LAND CLAIM SANFORD H. WHITE NO. 61 CORNER INTERIOR ELL  
 CONDITION REPORT     ; REFERENCED OUT     ; RENEWED XX, SURVEYED IN     

**LOCATION AND COMMENTS.**

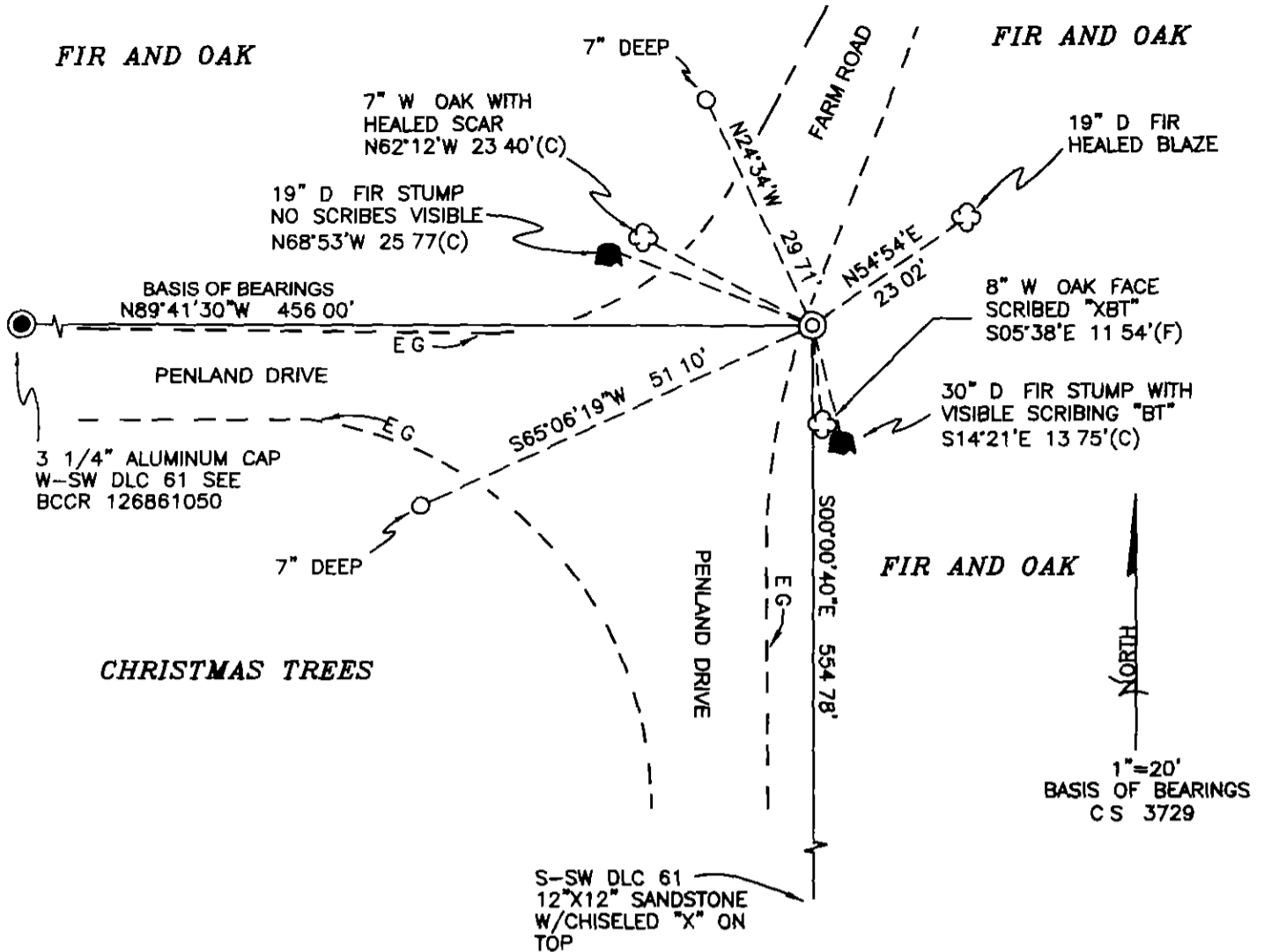
CORNER IS LOCATED ON THE EASTERLY SIDE OF A TREE FARM ACCESS ROAD AND 25 FEET NORTHEAST OF A 90° CORNER IN PENLAND DRIVE TO REACH CORNER FROM THE JUNCTION OF RITCHIE ROAD AND PENLAND DRIVE, TRAVEL NORTHERLY ON PENLAND DRIVE FOR 0.17 MILES CORNER IS POOR FOR PREMARKING AND GPS CONTROL

**MONUMENTS AND ACCESSORIES FOUND (CONDITION AND SOURCE).**

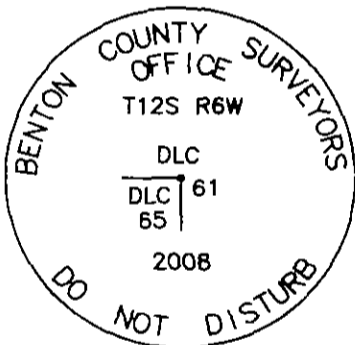
- 1 FOUND 1 3/4" AXLE, 16" BELOW GROUND LEVEL, IN PLUMB POSITION AND FIRMLY SET FOR CORNER POSITION  
 (SET POST PER RECORD [01])  
 (FOUND POST HOLE WITH TRACES OF ROTTEN WOOD, SET 1 3/4" TRUCK AXLE PER RECORD [08])  
 (FOUND 1 3/4" AXLE PER RECORDS [08] - [11])
- 2 FOUND 19" D FIR WITH HEALED BLAZE, N54°54'E, 23.02 FEET TO CENTER SET ALUMINUM NAIL AND PLASTIC WASHER IN SOUTHEASTERLY BASE OFR DISTANCE MEASUREMENT  
 (MARKED AN 8" D FIR, N53°14'E, 23.04 FEET PER RECORD [10])
- 3 FOUND 7" W OAK WITH HEALED SCAR, N62°12'W, 23.40 FEET TO CENTER SET ALUMINUM NAIL AND PLASTIC WASHER IN SOUTHWEST BASE FOR DISTANCE MEASUREMENT  
 (A 6" W OAK WITH HEALED BLAZE, N63°09'W, 23.27 FEET PER RECORD [10])
- 4 FOUND 19" ROTTEN D FIR STUMP, N68°53'W, 25.77 FEET TO CENTER NO VISIBLE SCRIBING  
 (MARKED 7" FIR, N70°01'W, 25.80 FEET SET SPIKE IN SOUTHERLY SIDE PER RECORD [06])  
 (FOUND 18" D FIR STUMP, WITH HEALED BLAZE, N70°01'W, 25.80 FEET PER RECORD [10])
- 5 FOUND 30" ROTTEN D FIR STUMP WITH VISIBLE SCRIBING "BT", S14°21'E, 13.75 FEET TO CENTER  
 (MARKED 21" FIR, S09°36'E, 13.84 FEET, SET SPIKE IN WESTERLY SIDE PER RECORD [06])  
 (FOUND 30" D FIR STUMP, S09°36'E, 13.60 FEET PER RECORD [10])
- 6 FOUND 12" X 12" STONE WITH "X" CHISELED IN TOP, S00°00'40"E, 554.78 FEET, THE SOUTH-SOUTHWEST CORNER OF THE SANFORD H WHITE DLC NO 61  
 (SOUTH, 550.40 FEET PER RECORDS [01] AND [02])  
 (12" X 12" X 7" STONE, S00°01'30"E, 554.57 FEET PER RECORDS [06] AND [08])  
 (FOUND 10" X 10" STONE, S00°00'30"E, 554.71 PER RECORD [11])
- 7 FOUND 3 1/4" ALUMINUM DISK AT THE WEST-SOUTHWEST CORNER OF THE SANFORD H WHITE DLC NO 61, N89°41'30"W, 456.00 FEET **BASIS OF BEARINGS FOR THIS RESTORATION.** SEE RESTORATION NO 126861050  
 (WEST, 452.10 FEET PER RECORDS [01] AND [02])  
 (1 3/4" AXLE, S89°41'30"W, 455.85 FEET PER RECORD [06])  
 (1 3/4" AXLE, N89°42'48"W 455.94 FEET PER RECORD [11])

**MONUMENT SET (PROCEDURES AND DESCRIPTION):**

HELD THE 1 3/4" AXLE FOR TRUE CORNER POSITION, WHICH WAS FOUND IN PLUMB POSITION AND FIRMLY SET SET A 2" X 3 1/2" GALVANIZED IRON PIPE WITH A 3 1/4" ALUMINUM DISK CONCRETED IN THE TOP, OVER AXLE AND 12" BELOW GROUND LEVEL, MARKED AS SHOWN ON PAGE 2 OF 2 SET A 6 FOOT ORANGE CARSONITE "SURVEY MARKER" POST 0.5 FEET NORTH OF NEW MONUMENT



MONUMENT DETAIL



3 1/4" ALUMINUM DISK

LEGEND

- SET 5/8" X 30" REBAR WITH YELLOW PLASTIC CAP MKD "BENTON COUNTY SURVEYOR"
- (F) MEASUREMENT TO FACE
- (C) MEASUREMENT TO CENTER
- ⊙ GOVERNMENT MONUMENT SET AS SHOWN
- ⊙ GOVERNMENT MONUMENT FOUND AS SHOWN
- ☼ BEARING TREE AS NOTED
- BCCR BENTON COUNTY CORNER RESTORATION
- BEARING TREE STUMP AS NOTED
- E G EDGE OF GRAVEL

NEW ACCESSORIES:

- 1 SET REBAR (SEE LEGEND) 10" BELOW GROUND LEVEL S65°06'19"W, 51.10 FEET
- 2 SET REBAR (SEE LEGEND) 7" BELOW GROUND LEVEL N24°34'W, 29.71 FEET
- 3 8" W OAK FACE SCRIBED "XBT" S05°38'E, 11.54 FEET TO FACE SET ALUMINUM NAIL AND PLASTIC WASHER BELOW SCRIBING FOR DISTANCE AND ANGLE MEASUREMENT

NOTES.

COMPASS DECLINATION IS 20° EAST. ALL MEASURED DISTANCES AND BEARINGS ARE TO THE CENTER OF THE OBJECT, UNLESS OTHERWISE NOTED. ALL BEARING TREES ARE PAINTED AND HAVE A B.T. TAG ATTACHED, FACING THE CORNER UNLESS OTHERWISE NOTED. ALL NEW BEARING TREES HAVE A PLASTIC WASHER (STAMPED "SURVEYOR MARKER DO NOT REMOVE") ATTACHED BY AN ALUMINUM NAIL TO THE FACE, BELOW THE "BT" FOR DISTANCE AND ANGLE MEASUREMENT UNLESS OTHERWISE NOTED. THE DRAWING IS FROM AUTOCAD RELEASE 2008.

THIS RESTORATION WAS PERFORMED AT THE DIRECTION AND APPROVAL OF THE BENTON COUNTY SURVEYOR DM

REGISTERED  
PROFESSIONAL  
LAND SURVEYOR

5/2/08 *David M. Dean*

FIRM/AGENCY BENTON COUNTY SURVEYOR'S OFFICE  
 ADDRESS 360 SW AVERY AVE CORVALLIS, OR 97333, PH 766-6821  
 PRESENT DAVID M DEAN, PLS AND BERNIE ALTENBACH, SURVEY TECH  
 EQUIPMENT LEICA TCR 1105 WITH TDS ON BOARD

OREGON  
JULY 13, 1984  
DAVID M DEAN  
2090

RENEWAL DATE: 12/31/09



C.S. #214 S.W. Corner Job. S. Hayworth D.L.C. #38-T.10x11 S. Range 6 W. ✓  
 SEPT. 15 1830-1914 Set  $\frac{3}{4}$ " x 15" bolt. From which  
 Oak 30. S. 15° E. 3.69 Standing  
 " 20 S. 42° W. 3.40 Stump (rotten)  
 " 10 S. 27° W. 2.522 New.

S.E. Corner Job. S. Hayworth D.L.C. N# 38 10x11 - 6 ✓  
 Set stone 14x10x5" underneath stone 15x8x6"  
 Oak 9" S. 82° W. 2.20 standing Not 229  
 " 20" N. 70½° W. 3.00 Stump  
 " 15" N. 3° N. .530 New  
 " 8" N. 80½° W. .065 "

N.E. Corner of Cl. N# 38. Job. S. Hayworth - 10x11-6 ✓  
 Set 12" x 48" Nower Axle. From which  
 Oak 20" S. 14° W. 3.14 Stump  
 Mark oak 7.5.50½° E. .919 New  
 " " 10 S. 27° W. 2.022 "

S.E. Cor. Isaac King D.L.C. N# 39 - Tp. 10S., R. 6 W. ✓  
 Set stone 16" x 12" 7" - from which  
 Oak 20" S. 72½° E. 1.99 standing  
 " 12. N. 17½° W. 4.54 "  
 The NE. cor. Cl. 38 bears S. 80° N. W. 175

S.W. Corner of Isaac King Cl. # 39 - 10-6 ✓  
 Set 14x30" = ½ Buggy Axle -  
 Oak 30 - S. 50° E. 63 standing  
 " 10. N. 65° E. 1.21 "

N.E. Corner R.F. Burgett Cl. 57 = N.W. Cor. Geo. Landerkin Cl. # 58 - 11-6

Witnesses: Geo. Caspary, Wilbur Plazant, & Henry Plazant. Clear Wilkes.

C.S. #216 N.W. Corner <sup>L.F.</sup> Penland D.L.C. # 63 - 12x13 S. 6 W. ✓  
 OCT. 22-29-1914 Set  $\frac{7}{8}$ " x 16" spoke of mester wheel of binder  
 Oak 24" S. 75° E. 2.96 - Not 136  
 Other tree gone.  
 witness - Millard Brown.

N.E. corner thos H. Linville Cl. # 5 - 12-6 ✓  
 Set.  
 Oak 12" S. 69° W. 57 Stump  
 " " S. 52° E. .27 "  
 Nonwitnesses

N. E. corner Thomas H. Linville Cl 6<sup>5</sup>, Twp. 12-6

1548 1873

Reestablishment by W. C. Galloway

October 24, 1914

Set post

Oak 12" in diam bears S 69° W  
Oak 12" in diam bears S 52° E

.59 Chains (stump)  
.27 chains (stump)

---

Re-established by Verle C. Moore

January, 1963 (C.S. 3729)

Set 1 3/4" truck axle in 3" hole 36" deep 0.7 feet below surface

Found cluster of young oak S. 52° E. 17.8 feet

Set spike in southerly side of Fir 4" in diam. N. 70° 01' W. 25.80 feet

Set spike in westerly side of Fir 21" in diam. S. 9° 36' E. 13.84 feet

1549

1874

126861040

BENTON COUNTY SURVEYORS OFFICE - CORNER RESTORATION

3320

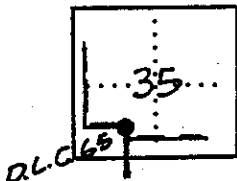
T. 12 S, R. 6 W, W. B. & M., BENTON COUNTY, OREGON

REPORTED BY JOHN RINALDI JR.

N.E. COR. THOMAS H. LINVELLE D.L.C. 65

TITLE BENTON COUNTY SURVEYOR CHIEF

DATE FEBRUARY 12, 1985



● OFFICIAL CORNER FOUND  
○ CORNER SET

CORNER COMMON TO SEC. \_\_\_\_\_

DESCRIBE

ADDITIONAL INFORMATION

FOUND 1 3/4" TRUCK AXLE 0.7' BELOW SURFACE PER CORNER RESTORATION CARD N° 1549 AND C.S. 3729. MONUMENT IS IN GOOD CONDITION AND WAS LEFT IN PLACE.

OVER

LEGIBLE MARKS ON BEARING OBJECTS

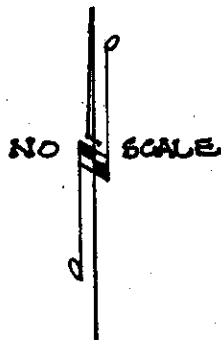
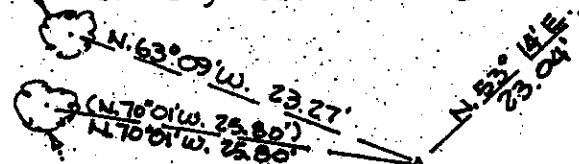
	FOUND	FOUND	SET	SET
	HEALED BLAZE	HEALED BLAZE	HEALED BLAZE	NONE
KIND	DOUG. FIR STUMP	DOUG. FIR STUMP	WHITE OAK	DOUG. FIR
SIZE	15" DIA.	30" DIA.	6" DIA.	8" DIA.
BEARING	N.70°01'W.	S.9°26'E.	N.63°09'W.	N.53°14'E.
DISTANCE	25.80'	13.5'	23.27'	23.04'
BT TAG POSTED	YES	YES	YES	YES

LEGEND:

( ) RECORD INFO PER CORNER REST. CARD N° 1549 & C.S. 3729.

SET "PK" NAIL IN S/E FACE OF 6" DIA. WHITE OAK, 2' ABOVE CROWN. BEARING MEASURED TO TREE CENTER, DISTANCE TO NAIL.

SET "PK" NAIL IN S/E FACE OF 8" DIA. DOUG. FIR, 2' ABOVE CROWN. BEARING MEASURED TO TREE CENTER, DISTANCE TO NAIL.



FD. 15" DIA. (WAS 7") DOUG. FIR. PER ABOVE REFERENCES. TREE IS NOW A 2' TALL STUMP. FOUND ALSO SPIKE AT TOP OF CUT PER SAID REFERENCES. BEARING MEAS. TO TREE CENTER, DIST. TO NAIL.

N.E. CORNER THOMAS H. LINVELLE D.L.C. 65 (SEE REVERSE FOR MON. DESC.)

FD. 30" DIA. (WAS 21") DOUG. FIR. PER ABOVE REFERENCES. TREE IS NOW A 3' TALL STUMP. NO SPIKE FOUND.

REGISTERED PROFESSIONAL LAND SURVEYOR

John Rinaldi Jr.

OREGON  
JULY 15, 1983  
JOHN RINALDI, JR.  
2056