

55  
C.S. # 196 S.W. cor of Hiram West: D.L.C. # 63 T. 12 S. R. 6 W.  
Set stone 15' at case 6' pipe Both trees used  
Fir 12' bears N. 32° 41' W. 35 chs.  
Oak 6' bears N. 69° 55' E. 543 chs.  
Witnesses L.H. Hawley, John Hiller

1915.

C.S. # 197 N.W. of M.H. Walker D.L.C. # 64 T. 12 S. R. 6 W.  
Set 3/4" pipe hole like state hole  
Oak 20' bears S 12° E. 162 chs. std.  
" 15' " S. 1° W. 142 " "  
Witnesses J.B. <sup>Arrants</sup>, C.M.H. <sup>Foster</sup> + P.S. Buntin Jan. 12, 1915.

" N.E. cor. of M.H. Walker D.L.C. # 64 T. 12 S. R. 6 W.  
Set a sandstone 7'x9'x12" orig. cor.  
Oak 10" bears N. 50° 30' E. 52 chs. std.  
" 18" " S. 65° W. 61 " "  
Witnesses J.B. + F.A. Arrants + P.S. Buntin Jan. 12, 1915.

" S.W. corner of J.H. Morris D.L.C. # 41 T. 12 S. R. 6 W.  
Set stone 6'x6'x12" orig. cor. one stump  
Oak 9' bears N. 35° E. 84 chs. std.  
" 9' " S. 50° E. 449 " "  
Witnesses J.B. + F.A. Arrants + P.S. Buntin Jan. 12, 1915.

" N.W. cor of J.H. Morris D.L.C. # 41 T. 12 S. R. 6 W.  
Set 3/4" pipe one oak down other gone  
Oak 10" bears S. 32° 30' E. 544 chs.  
" 14" " S. 31° 30' W. 282 " "  
Witnesses J.B. + F.A. Arrants + P.S. Buntin Jan. 14, 1915.

" S.W. cor. of James M. Chisham D.L.C. # 54 T. 12 S. R. 6 W.  
Set 3/4" pipe  
Oak stump 20' bears N. 81° E. 413 chs. std.  
" 24" " S. 54° 20' E. 284 " "  
Witnesses J.B. + F.A. Arrants + P.S. Buntin Jan. 14, 1915.

" S.E. corner of Colbert P. Blair D.L.C. # 57 T. 12 S. R. 6 W.  
Set a 3/4" pipe  
Oak 36" bears S 54° W. 22 chs. std.  
" 12" " N. 20° W. 43 " "  
Witnesses J.B. <sup>Arrants</sup> + P.S. Buntin Jan. 14, 1915.

" N.W. cor. of Isaac Foster D.L.C. # 62 T. 12 S. R. 6 W.  
Set 3/4" pipe  
Oak 18" S. 29° E. 259 chs. std.  
" 38 S. 29° W. 382 " "  
Witnesses J.B. Arrants + P.S. Buntin Jan. 14, 1915.

C.S. #

C.S. #

N. W. of M. H. Walker DLC 64, Twp. 12 S R 6 W

Reestablishment by W. C. Galloway

1547  
January 12, 1915

Set  $\frac{3}{4}$ " pipe hole like stake hole

Oak 20" in diam bears S 12° E

1.62 chains(standing

Oak 15" in diam bears S 1° W

1.42 chains(standing

Witnesses J. B. & F. A. Arrants, Otto H. L. Peterson and P. S. Buntin

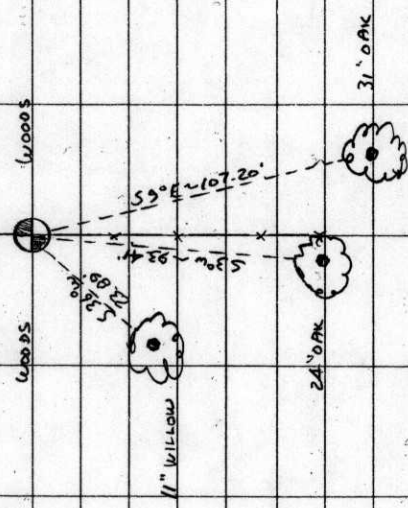
T125 R6W SEC 35 NW COR. MICHAEL WALKER DLC NO 64  
 ENDS 3/4" I.D. 1" IN N,S WIRE FENCE LINE 0.5' BELOW  
 SURFACE FOR THE CORNER (COR. REST. NO. 1547)  
 " AN OAK 31" IN DIA. @ HEALED FACE ON N-NW 1/4  
 SIDE BEARS S 9° E ~ 107.20' (S 9° E ~ 106.92'  
 ORIG. SURVEY) SET A PK + B.C. B.W. IN W'Y BASE  
 SET B.T. TAG ON N-NW 1/4 FACE  
 " AN OAK 24" IN DIA. @ HEALED FACE ON N 1/4 SIDE  
 BEARS S 30° W ~ 93.41' (S 1° W ~ 93.72' ORIG.  
 SURVEY) SET PK + B.C. B.W. IN E'Y BASE. SET B.T.  
 TAG ON N 1/4 FACE.

NO OTHER RECORD BEARING OBJECTS WERE RECOVERED

SET: 2" I.D. x 36" LONG IRON PIPE @ A 3 1/4" BEN.  
 Co. B.C. STAMPED AS SHOWN CENTERED OVER  
 THE RECOVERED IRON PIPE  
 A WILLOW 11" IN DIA. BEARS S 36° W ~ 23.89' A SET  
 A PK + B.C. B.W. IN NW 1/4 BASE SET A B.T. TAG  
 ON NE 1/4 FACE, FACE + SURFACE "DLC 64 BT"  
 SET: ORANGE CARBONITE " SURVEY MARKER " ASST  
 I W X

4/53

7/13/89, C.T. M.B. P. SILVA COMP. 20° E DEC., CLOY, WASH



THE CORNER IS LOCATED IN A N,S WIRE FENCE,  
 65' N OF A FENCE COR. 800' E'Y OF PETERSON RD.  
 Co. Rd. No 3623. IT WOULD BE POOR FOR PREMARKING X  
 GPS CONTROL

CAP STAMPINGS

NW COR. DLC 64  
 M. WALKER

DLC  
 63 DLC  
 64

T125 R6W W4  
 1989

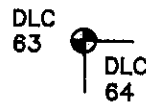
BENTON COUNTY CORNER RESTORATION FORM

3627

SECTION 35 TOWNSHIP 12 S RANGE 6 W DLC MICHAEL WALKER NO. 64 CORNER NW  
DATE 7/13/89 CORNER RESTORATION FIELD BOOK NUMBER 4 PAGE 53

CORNER DESIGNATION:

THE NORTHWEST CORNER OF MICHAEL WALKER DLC NO. 64.



- CONDITION REPORT ONLY
- REFERENCED OUT
- RENEWED
- SURVEYED IN

LOCATION AND COMMENTS:

THE CORNER IS LOCATED IN A NORTH-SOUTH WIRE FENCE, APPROXIMATELY 65 FEET NORTH OF A FENCE CORNER AND 800 FEET EASTERLY OF PETERSON ROAD (COUNTY ROAD NO. 36023).

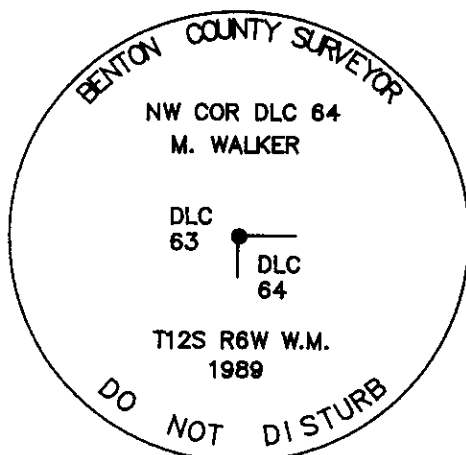
PREVIOUS RENEWALS/SURVEYS, ETC.:

CORNER RESTORATION NO. 1547 BY W. C. GALLOWAY IN 1915.  
COUNTY SURVEY NO. 4088 BY F. LEMKE IN 1965.  
COUNTY SURVEY NO. 6999 BY M. LEMKE IN 1980.

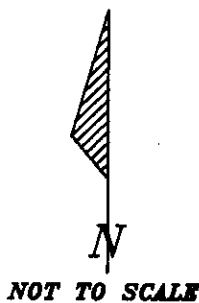
MONUMENTS AND ACCESSORIES FOUND (CONDITION AND SOURCE):

FOUND: 3/4" INSIDE DIAMETER IRON PIPE FOR THE CORNER IN A NORTH-SOUTH FENCE LINE, 0.5 FOOT BELOW SURFACE (CORNER RESTORATION NO. 1547).  
FOUND: AN OAK 31" IN DIAMETER WITH A HEALED FACE ON THE NORTH-NORTHWESTERLY SIDE, BEARS S 9° E 107.20 FEET (S 9° E 106.92 FEET, ORIGINAL SURVEY). SET A P.K. NAIL AND A B.C.B.W. IN THE WESTERLY BASE. SET A B.T. TAG ON THE NORTH-NORTHWESTERLY FACE.  
FOUND: AN OAK 24" IN DIAMETER WITH A HEALED FACE ON THE NORTHERLY SIDE, BEARS S 3° W 93.41 FEET (S 1° W 93.72 FEET, ORIGINAL SURVEY). SET A P.K. NAIL AND A B.C.B.W. IN THE EASTERLY BASE. SET A B.T. TAG ON THE NORTHERLY FACE.  
NO OTHER RECORD BEARING OBJECTS WERE RECOVERED.

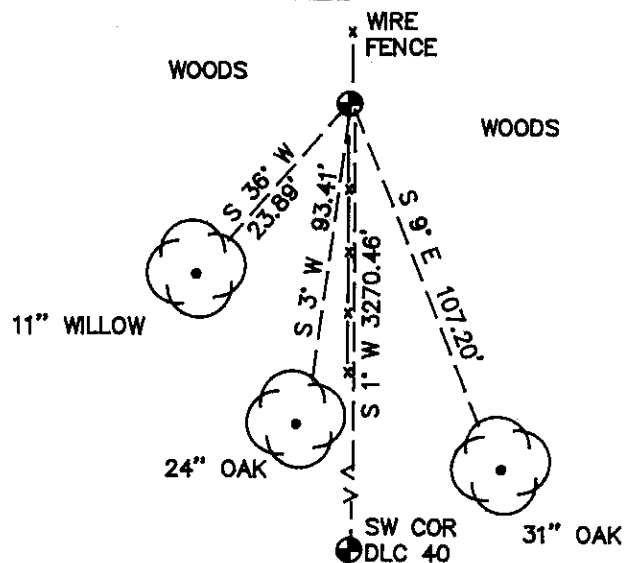
MONUMENT DETAIL



3 1/4" BRASS CAP



SKETCH



MONUMENT SET (PROCEDURES AND DESCRIPTION):

SET A 2" INSIDE DIAMETER BY 36" LONG IRON PIPE WITH A 3 1/4" BENTON COUNTY BRASS CAP, STAMPED AS SHOWN, CENTERED OVER THE RECOVERED IRON PIPE.

NEW ACCESSORIES :

A WILLOW 11" IN DIAMETER BEARS S 36° W 23.89 FEET. FACED AND SCRIBED "DLC 64 BT". SET A P.K. NAIL AND A B.C.B.W. IN THE NORTHWESTERLY BASE. SET A B.T. TAG ON THE NORTH-EASTERLY FACE.  
THE SOUTHWEST CORNER OF THE MICHAEL WALKER DLC NO. 40, REMONUMENTED WITH A 3 1/4" BENTON COUNTY BRASS CAP ON THIS DATE (CORNER RESTORATION NO. 3628), BEARS S 1° W 3270.46 FEET (SOUTH 3270.46 FEET, ORIGINAL SURVEY).  
SET: AN ORANGE CARSONITE "SURVEY MARKER" POST 1 FOOT WESTERLY.

NOTES:

B.C.B.W. IS A BRASS WASHER STAMPED "BENTON COUNTY SURVEYOR". COMPASS DECLINATION IS 20° EAST. ALL MEASURED DISTANCES AND COMPASS BEARINGS ARE TO THE CENTER OF THE OBJECT, UNLESS OTHERWISE NOTED.

FIRM/AGENCY: BENTON COUNTY PUBLIC WORKS  
ADDRESS: 360 S.W. AVERY AVE. CORVALLIS OR. 97333; PH. 757-6821  
PARTY CHIEF: CURTIS J. LIESENFELT  
CREW: MARY BARRON  
WITNESS:

REGISTERED PROFESSIONAL LAND SURVEYOR

*Danna L. Ingram-Fehrenbacher*  
OREGON  
JULY 16, 1982  
DANNA L. INGRAM-FEHNRENBACHER  
1995