

C.S. 339
by W.C. Galloway
V.M. Patterson
Oct. 12, 1945

Corner to Sections 7 & 18 T 11 S. R 5 W. and 12 & 13 T 11 S. R 6 W. W.M.
On Range line, Oak stake 5'x5"
Fir 34" N15° E. 142
" 12" S59° E. 378
" 18" N. 84½° W. 437
" 20" N. 49½° W. 400

C.S. 309
M.C. Galloway C.S.
Sept. 1934
Rudolph Stewart
E.E. Larkin

¼ Sec. bet. Secs. 12 & 13 T 12-5
Set Q. bottle 15" under the surface
Oak 40" in diabears N60° E. 5.70 stump
Near cor. of concrete fdn. of House N. 83° 27' W. 6.396
Oak 18" S. 59° 13' W. 7.095 (not mtd) by fence E. of barn.

Corner to Sections 11, 12, 13 & 14 T. 12-5
Govt. Cor. Pipe with cap.
Oak 15" S. 85° E. 2.77
" 13 N. 16° E 2.492

C.S. 177
by W.C.G.
Edson Damm
Apr. 1947

N.W. Corner of Isaac King Cl. 39 T. 10 S. R. 6 W. W.M.
Re Set Orig. Stone which had been dug out. Stone 4" x 8" x 18"
Set in exact place from a ¾" iron rod S. 30° and ¾" Pipe N. 30°

C.S. 159
C.C. Hanson
L.A. Wells
4/25/47

¼ Sec. Cor between Secs 1 & 2, Twp 11 S., R. 7 W.
Set 5/8" Pin
Fir 24" (Now 60") N. 11° E 2.91 stl (Distances on original notes)
" " " " N 55° E 3.36 " (obviously reversed)

C.S. 54
6/10/49
C.C. Hanson
L.A. Wells

Cor. to Secs. 7, 8, 17 & 18, Twp. 14 S., R. 7 W.
Set 5/8" Pin
Cedar 12" (36) N. 89° E. 3.14 stl Dead & Burnt Out
Maple 12" N 88° W. 0.29 Rotten stump & sprouts
" 10" S. 25° E. 0.48 " " "
Fir 30" N. 27° 20' E. 0.505

Misc. Lincoln County
C.C. Hanson
J.L. Wright
7/19/50

Cor. to Secs. 26, 30, 36, & 31. Twp. 11 S., R. 7 W.
Set 5/8" Pin
Found Original Trees.

C.S. #278
M.L. Bayarkin dec.
Otto Ziemke
2-9-51

S.W. Cor. James L. Bounds D.L.C. No 69, Twp. 12 S., R. 6 W.
Set 3/4" rod 16" below surface, in field
No trees near.

S. W. corner James L. Bounds DLC 69, Twp. 12 S. R. 6 W.

1570

Reestablishment by M. L. Beyerlein

February 5, 1951

Set $\frac{3}{4}$ " rod, 16" below surface in field
No trees near

OREGON CORNER RESTORATION FORM

DLC Section 69 Township 12 Range 6

County BENTON Date 1/9/1987

CORNER DESIGNATION

DLC 70 | DLC69 SOUTH WEST CORNER
DLC 69
J. BOUNDS

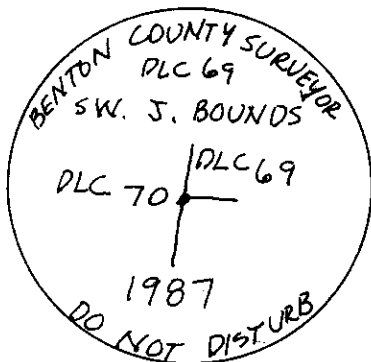
- Condition Report Only
- Not Found
- Renewed
- Unrecorded
- Surveyed In
- Referenced Out

Previous Renewals/Surveys, etc. CORNER REST No. 1570 2/5/1951 BY BEYERLEIN
CS 2248, CS 7398, CS 7450, 12-6-#00023 INFO WAS
DONE BY BEYERLEIN

Monument(s) & Accessories Found: (Condition and Source)

FOUND A 3/4" IRON ROD 12" BELOW SURFACE
NO OTHER BEARING OBJECTS FOUND

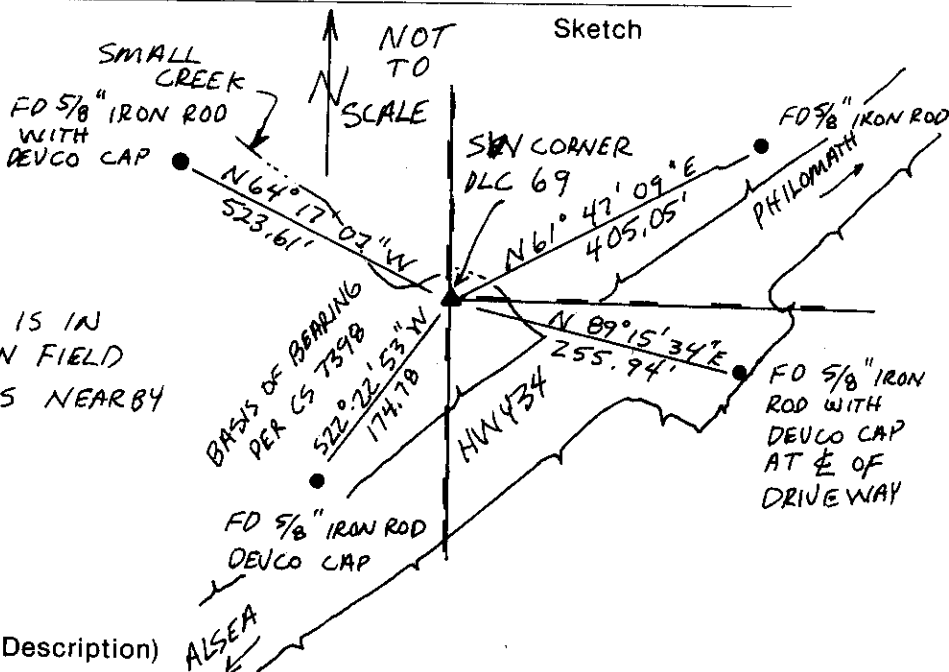
Monument Detail



3/4" BRASS CAP

NOTE:
CORNER IS IN AN OPEN FIELD
NO TREES NEARBY

Sketch



Monument Set (Procedures and Description)

DROVE A 1 5/8" X 36" OUTSIDE DIAMETER IRON PIPE OVER THE 3/4" IRON
ROD WITH A 3/4" BRASS CAP 18" BELOW SURFACE.

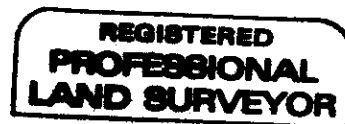
New Accessories THERE ARE NO TREES NEAR THE CORNER, SO
CORNER IS TIED TO 4 5/8" IRON RODS AS SHOWN.

Location & Comments

CORNER IS LOCATED 90 FEET N/W OF HWY 34 AND 10 FEET SE OF A SMALL CREEK.

Compass Declination _____
Firm/Agency BENTON COUNTY PUBLIC WORKS
Address 360 SWAVERY CORVALLIS OR 97333
Party Chief PETE MCDOWELL
Notes ANDY FOSTER
Witness _____

Surveyor's Seal



Danna L. Ingram

