

127400300

CORNER FILE TRACKING

S:\Survey Corners\CORNERS\Templates\Filetrac2.doc
10/04/2010

CORNER NUMBER
127400300

STEP	HISTORY	RESTORATION
Form Prepared, DB	3/20/15	5/20/15
Field Inspection, DB	4/10/15	4/16/15
Finish index (count unit)	3/20/15	4/10/15
Counter Index	4/17/15	4/17/15
GIS Index Form	5/27/15	5/27/15
Checked, DB	5/28/15	5/28/15
Form Edited, DB	5/28/15	5/28/15
Form Signed, DB	5/28/15	5/28/15
Authorize Payment, DB	—	—
Archive Digital Files	5/28/15	5/28/15
Collect Documents	5/28/15	5/28/15
PDF File	5/28/15	5/28/15
Copy For Filming	5/28/15	5/28/15
Scanned (pdf to laserfiche)	5/28/15	5/28/15
Filmed (Archived), DB		
Filed, DB		

(DB) = Entry needed in database (Access).

COMMENTS:

DATE 03/20/2015

TOWNSHIP 12 SOUTH, RANGE 7 WEST, WILLAMETTE MERIDIAN; SECTION 21 CORNER SOUTHEAST DONATION LAND CLAIM N/A CORNER N/A

COMMON CORNER(S):

SOUTHWEST CORNER SECTION 22
NORTHWEST CORNER SECTION 27
NORTHEAST CORNER SECTION 28

RECORDS (INFORMATION IN BOLD ITALICS IS COUNTY STAFFS' INTERPRETATION OF THE RECORD)

BASED ON EXTENSIVE RESEARCH AND RECOVERY OF EVIDENCE, THIS OFFICE HAS DETERMINED THAT MOST GENERAL LAND OFFICE SURVEYORS IN BENTON COUNTY MEASURED TO THE FACE OF BEARING TREES.

- [01] GENERAL LAND OFFICE (GLO) NOTES BY GEORGE C. MERCER, D.S., DATED AUGUST, 1865. SET POST FROM WHICH A RED FIR 50" DIA BEARS N20°E, 40 LINKS (26.40 FEET); A RED FIR 50" DIA BEARS S5°E, 34 LINKS (22.44 FEET); A MAPLE 5" DIA BEARS S70°W, 17 LINKS (11.22 FEET); A MAPLE 5" DIA BEARS N5°W, 17 LINKS (11.22 FEET).
- [02] GENERAL LAND OFFICE (GLO) NOTES BY CLARK SMITH, D.S., DATED DECEMBER 10, 1878. THE POST AND BEARING TREES ALL STANDING AND AGREE WITH THE DESCRIPTIONS FURNISHED.
- [03] BENTON COUNTY CORNER RESTORATION NO. 1673 BY L. W. HUNNEMULLER, P.L.S., DATED AUGUST 28, 1980. NO REMAINS OF ORIGINAL POST FOUND. OPENED A 56" DIA WINDTHROW, FOUND ORIGINAL SCRIBING "BT". RECORD S5°E, 34 LINKS (22.44 FEET). FROM CORNER POINT RECORD N20°E, 40 LINKS (26.40 FEET) IS A STUMP HOLE FOR NORTHEAST ORIGINAL BEARING TREE. NO REMAINS OF NORTHWEST AND SOUTHWEST BEARING TREES WHICH WERE MAPLES (PROBABLY VINE MAPLES). SET 3-1/4" ALUMINUM CAP MARKED "T12S R7W S21 S22 S28 S27 1980 RLS 1050" ON 30" PIPE IN OLD LOGGING ON EAST SLOPE. A FIR 4" DIA BEARS N8°W, 11 FEET MARKED "T12S R7W S21 BT"; A FIR 7" DIA BEARS S58°W, 34.6 FEET MARKED "T12S R7W S28 BT"; A FIR 5" DIA BEARS N42°E, 46.3 FEET MARKED "T12S R7W S22 BT"; A HEMLOCK 5" DIA BEARS S8°E, 19.6 FEET MARKED "T12S R7W S27 BT". ALL BEARING TREES HAVE ATTENTION SIGNS, RED PAINT AND A DOUBLE BLAZE.

- [04] BENTON COUNTY SURVEY NO. 7688 BY KENNETH M. WIGHTMAN, II, P.L.S., AND JAMES M. GRIFFIS, P.L.S., DATED NOVEMBER 1, 1983. FOUND 3-1/2" ALUMINUM CAP MARKED "T12S R7W S21 S22 S28 S27 1980 RLS 1050" FROM WHICH D. FIR 8" DIA BEARS S52°W, 34.7 FEET, SCRIBING VISIBLE; HEMLOCK 4" DIA BEARS S12°E, 19.6 FEET, SCRIBING VISIBLE; D. FIR 4" DIA BEARS N12°W, 11.2 FEET, SCRIBING VISIBLE; D. FIR 4" DIA BEARS N38°E, 46.3 FEET, SCRIBING VISIBLE; 56" DIA WINDTHROW (GLO BT) BEARS S5°E, 22.4 FEET; ROOT HOLE (GLO BT) BEARS N20°E, 26.4 FEET.

FIRM/AGENCY: BENTON COUNTY SURVEYOR'S OFFICE
ADDRESS: 360 S.W. AVERY AVE., CORVALLIS, OR 97333; PH. 541-766-6821
RESEARCH BY: DAVID L. MALONE, P.L.S.
DATA ENTRY BY: SAME

**BENTON COUNTY CORNER RESTORATION FORM, PAGE 1 OF 2, 127400300R2
SEE CORNER HISTORY FORM FOR RECORDS ETC.**

CORNER RESTORATION FIELD BOOK NUMBER 30 PAGE(S) 40
TOWNSHIP 12 SOUTH, RANGE 7 WEST, WILLAMETTE MERIDIAN; SECTION 21 CORNER SOUTHEAST
DONATION LAND CLAIM N/A CORNER N/A
CONDITION REPORT ; REFERENCED OUT X; RENEWED ; SURVEYED IN

DATE 04/16/2015

LOCATION AND COMMENTS:

CORNER IS LOCATED ON A VERY STEEP NORTHEAST FACING SLOPE IN A ±40 YEAR OLD D. FIR STAND. TO REACH CORNER FROM THE INTERSECTION OF MARYS PEAK ROAD AND HIGHWAY 34, DRIVE ALONG MARYS PEAK ROAD 5.35 MILES TO A GATE AT ROAD 2005. DRIVE THROUGH GATE AND FOLLOW ROAD 2005 FOR 0.78 MILES AND PARK. WALK EASTERLY ABOUT 300-400 FEET TO CORNER. CORNER IS BAD FOR PREMARKING AND GPS CONTROL.

MONUMENTS AND ACCESSORIES FOUND (CONDITION AND SOURCE):

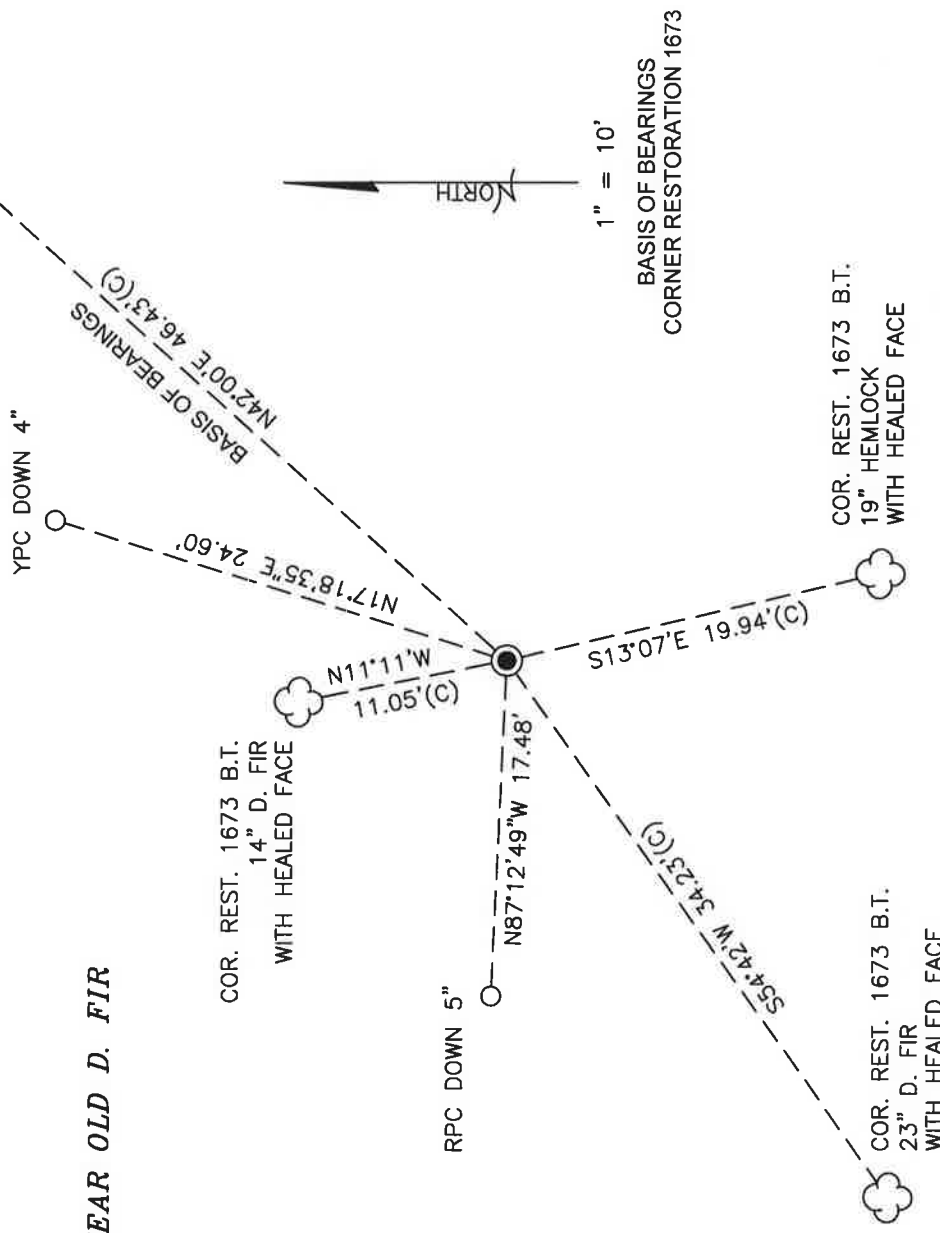
1. FOUND 3-1/4" ALUMINUM CAP ON A 2-1/2" OUTER DIAMETER ALUMINUM PIPE, FLUSH WITH GROUND SURFACE FOR THE CORNER.
(SET POST PER RECORD [01]).
(POST STANDING AND AGREES WITH THE DESCRIPTIONS FURNISHED PER RECORD [02]).
(NO REMAINS OF ORIGINAL POST FOUND. SET 3-1/4" ALUMINUM CAP MARKED "T12S R7W S21 S22 S28 S27 1980 RLS 1050" ON 30" PIPE IN OLD LOGGING ON EAST SLOPE PER RECORD [03]).
(FOUND 3-1/2" ALUMINUM CAP MARKED "T12S R7W S21 S22 S28 S27 1980 RLS 1050" PER RECORD [04]).
2. FOUND D. FIR 19" DIA WITH HEALED FACE BEARS N42°00'E, 46.43 FEET TO CENTER. SET ALUMINUM NAIL AND PLASTIC WASHER ON NORTHWESTERLY BASE FOR DISTANCE MEASUREMENT. **BASIS OF BEARINGS FOR THIS RESTORATION.**
(FIR 5" DIA BEARS N42°E, 46.3 FEET MARKED "T12S R7W S22 BT" PER RECORD [03]).
(D. FIR 4" DIA BEARS N38°E, 46.3 FEET, SCRIBING VISIBLE PER RECORD [04]).
3. FOUND HEMLOCK 19" DIA WITH HEALED FACE BEARS S13°07'E, 19.94 FEET TO CENTER. SET ALUMINUM NAIL AND PLASTIC WASHER ON NORTHEASTERLY BASE FOR DISTANCE MEASUREMENT.
(HEMLOCK 5" DIA BEARS S8°E, 19.6 FEET MARKED "T12S R7W S27 BT" PER RECORD [03]).
(HEMLOCK 4" DIA BEARS S12°E, 19.6 FEET, SCRIBING VISIBLE PER RECORD [04]).
4. FOUND D. FIR 23" DIA WITH HEALED FACE BEARS S54°42'W, 34.23 FEET TO CENTER. SET ALUMINUM NAIL AND PLASTIC WASHER ON SOUTHEASTERLY BASE FOR DISTANCE MEASUREMENT.
(FIR 7" DIA BEARS S58°W, 34.6 FEET MARKED "T12S R7W S28 BT" PER RECORD [03]).
(D. FIR 8" DIA BEARS S52°W, 34.7 FEET, SCRIBING VISIBLE PER RECORD [04]).
5. FOUND D. FIR 14" DIA WITH HEALED FACE BEARS N11°11'W, 11.05 FEET TO CENTER. SET ALUMINUM NAIL AND PLASTIC WASHER ON SOUTHWESTERLY BASE FOR DISTANCE MEASUREMENT.
(FIR 4" DIA BEARS N8°W, 11 FEET MARKED "T12S R7W S21 BT" PER RECORD [03]).
(D. FIR 4" DIA BEARS N12°W, 11.2 FEET, SCRIBING VISIBLE PER RECORD [04]).

MONUMENT SET (PROCEDURES AND DESCRIPTION):

FOUND 3-1/4" ALUMINUM CAP ON A 2-1/2" OUTER DIAMETER ALUMINUM PIPE, FLUSH WITH GROUND SURFACE FOR THE CORNER. THE PIPE AND ALUMINUM CAP WERE SET BY THE U. S. FOREST SERVICE IN 1980 FROM THE ORIGINAL GENERAL LAND OFFICE SOUTHEAST WINDTHROWN BEARING TREE OPENED TO SCRIBING "BT", AND A STUMP HOLE OF ORIGINAL GLO NORTHEAST BEARING TREE. I FOUND THE WINDTHROWN BEARING TREE WITH SCRIBING "BT", BUT COULD NOT DEFINITELY DETERMINE WHERE THE STUMP HOLE OF THE TREE HAD BEEN AND DID NOT FIND A DEFINITE STUMP HOLE FOR THE NORTHEAST BEARING TREE. I ACCEPTED THE POSITION OF THE PIPE AND ALUMINUM CAP AS THE PERPETUATION OF THE CORNER POSITION.

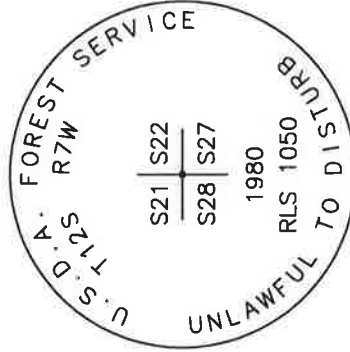
SET TWO NEW IRON ROD ACCESSORIES AS SHOWN ON PAGE 2 OF 2. RESET FALLEN OVER 6 FOOT ORANGE CARBONITE POST, WITH "ATTENTION" SIGN ATTACHED, 1 FOOT NORTH OF MONUMENT.

COR. REST. 1673 B.T.
19" D. FIR
WITH HEALED FACE



±40 YEAR OLD D. FIR

MONUMENT DETAIL



3-1/4" ALUMINUM CAP

LEGEND

- YPC
- SET 5/8" X 30" REBAR WITH PLASTIC CAP YELLOW PLASTIC CAP MARKED "BENTON COUNTY SURVEYOR"
- RPC
- (C) RED PLASTIC CAP MARKED "BENTON COUNTY SURVEYOR'S OFFICE" MEASUREMENT TO CENTER
- GOVERNMENT MONUMENT FOUND AS SHOWN
- B.T.
- ☁ BEARING TREE
- ☁ BEARING TREE AS NOTED

NEW ACCESSORIES:

1. SET REBAR (SEE LEGEND) N17°18'35"E, 24.60 FEET AND 4 INCHES BELOW GROUND LEVEL.
2. SET REBAR (SEE LEGEND) N87°12'49"W, 17.48 FEET AND 5 INCHES BELOW GROUND LEVEL.

NOTES:

COMPASS DECLINATION IS 16° EAST. ALL MEASURED DISTANCES AND BEARINGS ARE TO THE CENTER OF THE OBJECT, UNLESS OTHERWISE NOTED. ALL BEARING TREES ARE PAINTED AND HAVE A B.T. TAG ATTACHED, FACING THE CORNER UNLESS OTHERWISE NOTED. ALL BEARING TREES HAVE A PLASTIC WASHER (STAMPED "SURVEY MARKER DO NOT REMOVE") ATTACHED BY AN ALUMINUM NAIL TO THE SIDE CENTER OF THE TREE FOR DISTANCE MEASUREMENT, UNLESS OTHERWISE NOTED. ALL BEARING TREES HAVE A FOREST SERVICE "ATTENTION" SIGN ATTACHED TO THE TREE FACING AWAY FROM THE MONUMENT.

THIS RESTORATION WAS PERFORMED AT THE DIRECTION AND APPROVAL OF
THE BENTON COUNTY SURVEYOR *[Signature]*

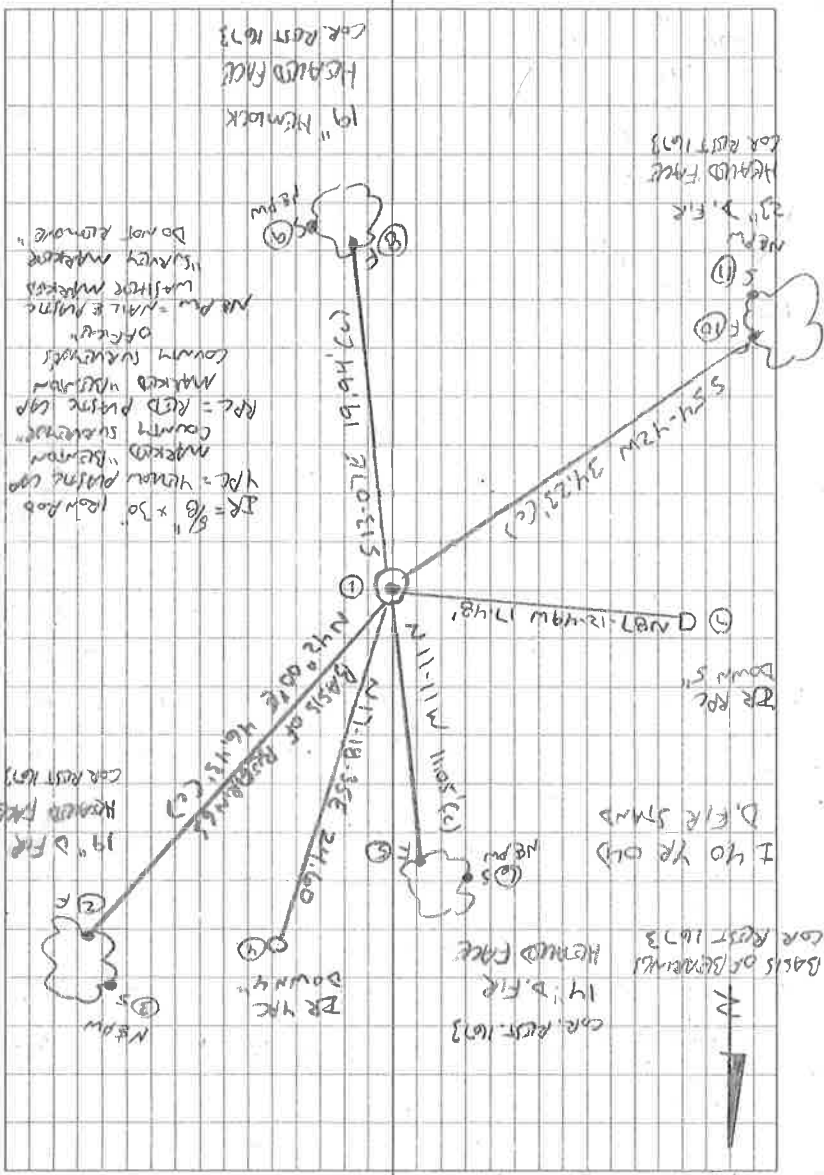
REGISTERED
PROFESSIONAL
LAND SURVEYOR

5/28/15
David L. Malone

OREGON
JANUARY 12, 1999
DAVID L. MALONE
51523

FIRM/AGENCY: BENTON COUNTY SURVEYOR'S OFFICE
ADDRESS: 360 S.W. AVERY AVE., CORVALLIS, OR 97333; PH. 541-766-6821
PRESENT: DAVID L. MALONE, P.L.S. AND BERNARD ALTENBACH, SURVEY TECH.
EQUIPMENT: NIKON NIVO3.C WITH SURVEY PRO ONBOARD.

RENEWAL DATE: 12/31/16



COOL, WENR
 4/10/15
 D. MATONE
 B. AXTENRACH
 NIKON MID3.C
 SURVEY PRO OMMANED

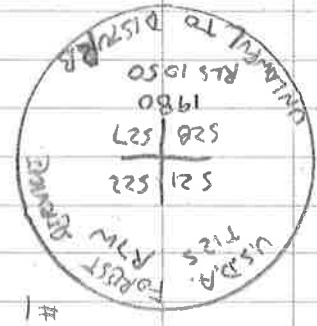
19" HEMLOCK
 HEADS FACE
 COR. REST 1673

IR = 8" x 30" ROUND
 Y.P.C. = VENEER PUTTING CAP
 MARKED "BELOW"
 COUNTY SURVEYOR
 R.P.C. = R.I.D. PUTTING CAP
 MARKED "ABOVE"
 COUNTY SURVEYOR
 OFFICE
 N.P.M. = WHITE MARKS
 WASHED MARKS
 "SILVER MARKS"
 "DO NOT REMOVE"

14" D.E.R.
 HEADS FACE
 COR. REST 1673

14" D.E.R.
 HEADS FACE
 COR. REST 1673

14" D.E.R.
 HEADS FACE
 COR. REST 1673



#1

FD 3-1/4" ALUMINUM CAP OR A 2-1/2" D. ALUMINUM PIPE. FD 4 BT'S PER CORNER RESTORATION 1673.
 ATTENTION SIGN ON SIDE AWAY FROM MONUMENT.
 ATTACHED BT TAGS FACING MONUMENT. CORNER ABOUT 1 CHAIN NORTH.
 OVERLOOKABLE CORNER POST (W/ ATTENTION SIGN "ATTACHED") NORTH OF MONUMENT. BT'S HAVE ATTACHED BT TAGS FACING MONUMENT. CORNER ABOUT 1 CHAIN NORTH.
 2 NEW IRON ROD ACCESSORIES. EIGHT FAULTY CORNER POST (W/ ATTENTION SIGN "ATTACHED") NORTH OF MONUMENT. BT'S HAVE ATTACHED BT TAGS FACING MONUMENT. CORNER ABOUT 1 CHAIN NORTH.
 REST 1673. DID NOT MEASURE TO GO BT, SET GO BT WITH EXPOSED SCREWS "BT" AS PER
 HEAD NE BT FOR BASIS OF BEARINGS. FD WINDTOWN
 FLUSH W/ GROUND SURFACE

127400300
 2122
 2827
 REFERENCE T125 R7W

CERTIFIED RECORD OF LAND CORNER MONUMENTATION



History of original corner establishment:

Corner established in 1865 by George Mercer. Set a post from which a red fir 50" dia. brs N20°E 401ks. A red fir 50" dia. brs S5°E 34 1ks. A maple 5" dia. brs S70°W 17 1ks. A maple 5" dia. brs N5°W 17 1ks.

Description of corner evidence found:

No remains of orig. post found.
Opened a 56" windthrow, found original scribing (BT).
Record S5°E 34 1ks dist.
From cor point - Record N20° E 40 1ks is a stump hole for position of N-E original BT.
No remains of NW and SW BT's which were maples (probably vine maples).

Description of monument and accessories | established to perpetuate the original location of this corner:

Set 3-1/4" aluminum cap on 30" pipe in old logging on east slope marked:
New BT's:
A fir 4" brs N8°W 11 ft dist (mkd T12S R7W S21 BT)
A fir 7" brs S58°W 34.6 ft dist (mkd T12S R7W S28 BT)
A fir 5" brs N42°E 46.3 ft dist (mkd T12S R7W S22 BT)
A hemlock 5" brs S8°E 19.6 ft dist (mkd T12S R7W S27 BT)
All BT's have attn signs, and red paint and a double blaze.
(Creek 1 chain north flows east) from record.



Larry Hunnemuller, Larry Carpenter, Neil Phillips 8/28/80



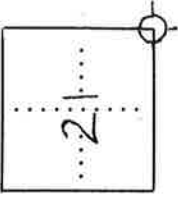
Office of... *Surveyor* County of... *Benton*
State of... *Oregon* I hereby certify that the within instrument was filed in this office
for record on the *2nd* day of... *September* , 19*80*
..... *James Blair* by *Danna Ingram*
(COUNTY OFFICIAL) (DEPUTY)

BENTON COUNTY SURVEYORS OFFICE - CORNER RESTORATION

1673

T. 12 S, R. 7 W, W. B. & M., BENTON COUNTY, OREGON
SECTION 21

REPORTED BY LARRY W. HUNNE MULLER
TITLE LAND SURVEYOR 1050
DATE AUGUST 25, 1975



● OFFICIAL CORNER FOUND

○ CORNER SET

SEC. CORNER COMMON TO SEC. 21, 22, 27 & 28
IS 3-1/4" ALUMINUM CAP ON 30" PIPE
DESCRIBE

ADDITIONAL INFORMATION

CORNER LOCATION RELATIVE TO NEARBY
FEATURES -
350' EAST OF LOCATION TAG ON
ROAD 2005, 2.6 MILES SOUTH
OF WOODS CREEK GATE NEAR
THE MARYS PEAK TRAILHEAD
PARKING LOT.

FOR ADDITIONAL INFORMATION SEE THE ORIGINAL IN THE T12S R7W FILE IN THE CORNER RESTORATION CORRESPONDENCE FILE DRAWER (CJL 7/16/90).

OVER

		LEGIBLE MARKS ON BEARING OBJECTS	
		ORIGINAL	ORIGINAL
KIND	WINDTHROW		STUMP HOLE
SIZE	56"		
BEARING	RECORD (S 5 E)		RECORD (N 20 E)
DISTANCE	34 IKS		40 IKS
BT TAG POSTED			
KIND	NEW	NEW	NEW
SIZE	4	7	5
BEARING	N 8° W	S 58° W	N 42° E
DISTANCE	11'	34.6'	46.3'
BT TAG POSTED	T12S R7W S21 BT	T12S R7W S28 BT	T12S R7W S27 BT